

Department of Hawaiian Home Lands
Annual Report 1988

'Aina Ho'opulapula



The Honorable John Waihee
Governor, State of Hawaii
Honolulu, Hawaii 96813

Dear Governor Waihee:



I am pleased to transmit to you and members of the Hawaii State Legislature the Department of Hawaiian Home Lands' annual report for the fiscal year ending June 30, 1988.

During this fiscal year, a department-wide process was initiated for setting major goals and establishing appropriate strategic actions for achievement. This process has provided guidelines within a strategic context for developing and implementing major programs over the next six years. Emphasis has also been placed on the implementation and completion of projects and plans.

Of particular importance was the long-awaited implementation of the Federal Housing Administration (FHA) insured loan program to provide lessees with additional means of financing home construction on homestead lots. This event is significant as it marked a shift from direct lending whereby the department has been the primary source of loan funds for lessees.

Also implemented this fiscal year was our statewide capital improvement program which identified and prioritized proposed projects for a ten-year period. Approximately \$22.7 million in fiscal biennium 1987-89 funds have been programmed to finance the design and construction of site improvements for awarded homestead lots and additional homestead lots for awards.

The department has also actively pursued available federal funds for programs benefiting native Americans. The U.S. Congress appropriated approximately \$1 million in 1988 for infrastructure improvements on Hawaiian home lands.

The department thanks the Administration and Legislature for the continuing support of and commitment to native Hawaiians. Working cooperatively, the vision of 'Aina Ho'opulapula will become a reality for native Hawaiians and for all Hawaii.

Respectively submitted,

Ilima A. Piihana

Ilima A. Piihana
Chairman
Hawaiian Homes Commission

Table of Contents

The Department

Mission	4
Organization Structure	5
Hawaiian Homes Commission	6
Homestead Services Division	7
Land Management Division	10
Land Use Summary	12

Financial Statements

Combined Balance Sheets	14
Combined Statements of Revenues, Expenditures and Changes in Fund Balance	15
Administrative & Operating Costs	16
Notes to Financial Statements	17

Appendix

1988 Legislation	20
CIP Projects	21
Operating Fund Projects Summary	25
Executive Orders	
on Hawaiian Home Lands	26
Hawaiian Home Lands	
Under DLNR Management	26
DHHL General Lease Summary	27
Subleases	34
Licenses	36
Revocable Permits	47
Rights of Entry	51
Hawaiian Home Lands Employees	52

The Department

- Mission
- Organization Chart
- Hawaiian Homes Commissioners
- Homestead Services Division
- Land Management Division
- Land Use Summary

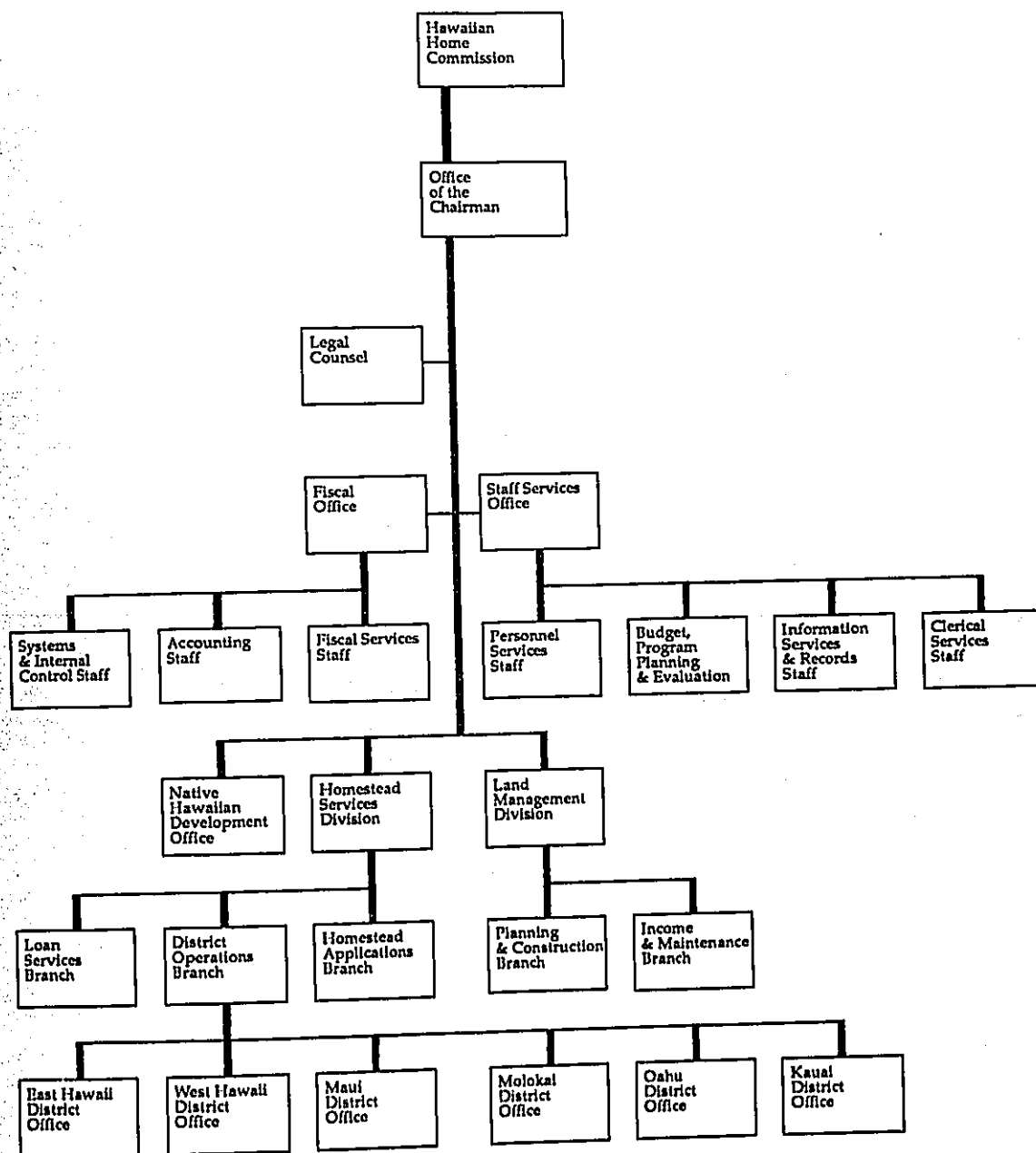


MISSION

*To manage
the Hawaiian Home Lands trust effectively,
and to develop and deliver land
to native Hawaiians.*



ORGANIZATION STRUCTURE



HAWAIIAN HOMES COMMISSION

In memoriam



John Kamalani
Oahu
Term: 1987-1991

John Kamalani brought to the Commission a wealth of experience in community service. He passed away on October 19, 1988.



Melvin Kalahiki
Vice-Chairman
Oahu
Term: 1984-1988

A public relations specialist with the Native Hawaiian Legal Corporation, Melvin Kalahiki was one of three Commission members representing Oahu. His term expired in June, 1988.



K. Alvina Park
Oahu
Term: 1986-1990

Alvina Park has been a staff member for a legislator, legislative aide for the Legal Aid Society, a secondary school teacher and a practical nurse.



Walter J. Smith
Kauai
Term: 1985-1989

Walter Smith is the president of Smith's Motor Boat Service and has been active in various community concerns.



Andrew Apana
Maui
Term: 1987-91

Andrew Apana is the corporate secretary/treasurer of Miki's Boutique, Inc., a chain of fashion stores.



Eleanor K. Ahuna
Hawaii
Term: 1984-1988

Eleanor Ahuna is an instructor of the Hawaiian language and cultural arts and is active in many Hawaiian community organizations. Her term expired in June, 1988.

Molokai

The Molokai seat on the Commission remained vacant for the fiscal year.

HOMESTEAD SERVICES DIVISION

Homestead Services Division (HSD) is where first impressions of the Hawaiian Homes Program are created, and a long-term, personal relationship is molded. It is here where a native Hawaiian is given the opportunity of the use of a parcel of land to satisfy the basic need of shelter—a home to perpetuate the family and a base to increase personal assets as the native Hawaiian commences on a 99-year affiliation with the Department of Hawaiian Home Lands. It is here at HSD where the demands of the program are recorded and the areas needing emphasis are stressed.

The Homestead Applications Branch is a native Hawaiian's initial contact with the Department. Here is where the beneficiary proves his native Hawaiian claim by the submittal of vital statistics documentation, affidavits, and genealogical evidences. A number of agencies assist applicants in proving native Hawaiian claims; some are the state Department of Health's Research and Statistics Office, State Archives, genealogical services and Hawaiian data bank of Alu Like, Inc., Family Court and the Family History Centers of the Church of Jesus Christ of Latter-Day Saints. Once native Hawaiian proof is established, the applicant selects the desired type of lease award—residence, agriculture or pasture on the island of his choice. There are no pasture awards on Oahu. Shown in the chart is the Department's applications waiting lists as of June 30, 1988.

Applications For Homestead Awards
(As of June 30, 1988)

Island	Residence	Agriculture	Pasture	Total
Oahu	4,602	429	0	5,031
Kauai	892	856	58	1,806
Molokai	491	435	62	988
Maui	1,754	1,667	67	3,488
Hawaii	3,059	2,672	619	6,330
TOTAL	10,798	6,039	806	17,643

The Department's waiting lists continue to expand rapidly at an average rate of 145 applicants monthly. During the fiscal year the number of applicants increased by 1,741. Of the 17,643 applications, the greatest demand is for residential homesteads with 61 percent of the applicants expressing interest. Though Oahu for many years attracted the most interest for homesteads, statistics now show neighbor island preferences more than double the demand for Oahu with Hawaii attracting the most applicants.

The Hawaiian Homes Program awards homestead leases for 99 years to native Hawaiian applicants on established waiting lists. At the close of fiscal year 1987-88, lease awards totaled 5,781 with nearly 80 percent of them awarded for residential



TOP In August 1987, the Department of Hawaiian Home Lands with the U.S. Department of Housing and Urban Development conducted a workshop to familiarize local lenders with the new FHA-insured loan program for Hawaiian Home Lands. Mike Flores of HUD (standing at left) listens to DHHL Deputy Director John Rowe explain the significance of the loan program to local lenders. **CENTER** Hawaiian Homes Commission Chairman Ilima Piliatala (left) addresses the dignitaries gathered for the groundbreaking for the first FHA-insured financed home at the Waianae Kai subdivision on Oahu's leeward coast. The homeowner, Lena Zinn, is seated to the left of Governor John Waihee in the front row. **BOTTOM** Lena Zinn, the first Hawaiian homestead lessee to utilize the new FHA-insured mortgage loan program, readies to open the door to her new home in the department's Waianae Kai subdivision on Oahu.

Homestead Leases (As of June 30, 1988)

District/ Area	Residence	Agricultural	Pasture	Total
OAHU				
Nanakuli	946	-	-	946
Waianae	374	-	-	374
Lualualei	148	63	-	211
Papakolea/Kewalo	319	-	-	319
Waimanalo	574	1	-	575
Oahu Total	2,366	66	0	2,425
KAUAI				
Anahola	331	45	-	376
Kekaha/Puu Opaie	74	-	2	76
Kauai Total	405	45	2	452
MOLOKAI				
Hoololehua	121	333	20	474
Kalamaula	125	119	1	245
Kapaakea	45	-	1	46
One Alli	29	-	-	29
Kamiloa	-	-	2	2
Molokai Total	320	452	24	796
MAUI				
Paukukalo	144	-	-	144
Waiehu	40	-	-	40
Kula	308	68	-	376
Maui Total	492	68	0	560
WEST HAWAII				
Kuhio Village/ Puukapu/Neirle/	-	-	-	-
Kamoku	140	105	59	304
Kawahae	211	-	-	211
West Hawaii Total	351	105	59	515
EAST HAWAII				
Keaukaha	458	-	-	458
Waiakea	208	-	-	208
Panaewa	-	218	-	218
Makuu	-	128	-	128
Kamaea/Pueo	-	13	8	21
East Hawaii Total	668	362	8	1,033
STATEWIDE TOTAL	4,608	1,099	96	5,803

purposes. Oahu has the highest number of awards with 2,361 leases awarded.

Since 1984, more than 2,059 homestead leases were awarded through the Department's award acceleration program. The program was the result of the need and desire expressed by beneficiaries for the Department to offer lands en masse. As a result, most of the homesteads awarded during the acceleration program were undeveloped, raw land. Though leases were awarded, use of these

unimproved parcels are delayed until the lots are improved and meet county standards.

The acceleration program has not only tremendously increased the number of lessees, but has also created an overwhelming interest in the program which resulted in dramatic growth in the Department's waiting lists for homestead awards.

Due to the rapid growth in the applicant count, administrative rules were amended to give preference to applicants who are not yet lessees. This provided for a fairer distribution of land among applicants and curbed the practice of multiple awards to a single individual.

The District Operations Branch provides support and services to the homestead lessees and applicants. Six district offices located on Oahu, Kauai, Molokai, Maui, and West and East Hawaii manage homestead areas and assist in Departmental projects in their respective areas. Some lessee services provided are: lease closings, conveyances by succession or assignment, lot subdivisions and relocations, and voluntary and involuntary lease terminations. Monitoring and assistance in complying to lease conditions are also a major service provided by the district offices.

The district offices interphase actively with private, federal, state, and county agencies in providing and coordinating public services to beneficiaries. Being the eyes and ears of the home office, they represent the Department at many functions requiring representation.

The Oahu District Office, in addition to servicing Oahu lessee requests, also receives and processes the many requests from neighbor island district offices. This office coordinates, prepares and submits requests for final decision by the Hawaiian Homes Commission.

The program requires routine adherence to lease conditions. Some of the conditions are occupancy, maintenance and security of the lot and improvements; liability and fire coverage; payment of real property taxes commencing on the eighth year of the lease; and active agricultural cultivation and pasturage for farm and ranch homesteads. The program also allows the transfer of the lease, subdivision of the leasehold, relocation to another area due to emergency situations, and voluntary surrender of the lease.

Shown is the Department's homestead lease award report as of June 30, 1988.

Loan Activities

The Hawaiian Homes Commission Act authorizes the Department of Hawaiian Home Lands to make

Loan Summary (\$ Thousands)

	Loans Receivable	Total No. of Accounts	Total Delinquent Accounts	No. of Accounts Del.	Del. Loans	% of Loans Del.
DIRECT LOANS						
Oahu	\$22,332	1,092	268	25.0	\$ 6,583	30.0
Kauai	2,083	110	40	36.0	897	43.0
Molokai	2,728	181	83	46.0	1,470	54.0
Maul	2,407	93	30	32.0	926	38.0
East Hawaii	7,653	347	160	46.0	3,685	48.0
West Hawaii	1,770	89	50	56.0	1,030	58.0
Total Direct Loans	\$38,973	1,912	631	33.0	\$14,591	37.0
LOAN GUARANTEES						
Oahu	\$4,841	193	23	11.9	\$713	15.1
Kauai	435	20	0	0.0	0	0.0
Molokai	912	42	1	2.4	4	0.4
West Hawaii	844	32	1	3.1	40	4.7
Maul	15	1	0	0.0	0	0.0
Total Loan Guarantees	\$7,047	288	25	0.0	757	0
TOTAL LOANS	\$46,020	2,200	656	30.0	\$15,348	33.0

loans to native Hawaiians. The program provides loan funds and alternative sources for loan funds for the construction of homes, repair and replace homes, and the development and operation of farms and ranches. The Department's loan program, administered by Loan Services Branch, includes direct loans from the Department as well as guaranteed loans from U.S.D.A. Farmers Home Administration, and Small Business Administration. The Department's loan portfolio is shown as of June 30, 1988.

If any loan is past due for two or more payments, the entire loan is classified as delinquent rather than showing the delinquent amount only. As an example, the \$15,348,000 in loans shown as delinquent are past due for \$2,417,000 in installments.

The Hawaiian Homes Commission holds contested case hearings for those borrowers seriously delinquent and issues Decisions and Orders which may cancel a lease or provide a plan to repay the delinquent amount. Failure to comply with the repayment plan would lead to the cancellation of the lease. On June 30, 1988, there were 76 accounts totaling \$1,712,000 under Decision and Order.

Since the outset of the program 68 years ago, the department has been the primary source of loan funds. Instead of having the availability of loan funds dictate the rate of home construction, the Department pursued alternatives to provide additional loan sources.

With the inception of the FHA loan program on

August 1, 1987, homestead lessees can apply for construction loans for new or replacement homes through local financial institutions with long-term loans insured by FHA. Previously, lessees had limited choices for home construction loans and had to rely on DHHL loan funds which were often unavailable.

Some 500 homestead lessees have lots now ready for new or replacement home construction. The implementation of this program immediately opened up the possibility for \$25 million in long-term financial assistance to qualified lessees.

Ohana Homestead Program

Under the Ohana Homestead Program, the Department offered free survey services to lessees who wished to subdivide their lots and transfer or surrender the subdivided portion to other native Hawaiians. Normally, lessees are responsible for the cost of subdividing existing lots, but in view of many large unused tracts, the Department sponsored the subdivision program in October 1985. The program expired on June 30, 1987.

During the program period, 91 subdivision requests were received. It is expected that more than 120 additional lots will be created under this program. The survey work should be completed in FY 1988-89.

LAND MANAGEMENT DIVISION

The approximate 187,500 acres placed under the control of the Department of Hawaiian Home Lands are managed by the Land Management Division. The division is responsible for the identification of areas appropriate for awards, subdivision of these areas into homestead lots, provision of infrastructural improvement for subdivisions and maximization of revenues through effective management of income-producing lands.

Officially comprised of the Planning and Construction Branch and the Income and Maintenance Branch, the Land Management Division was restructured on an interim basis in September 1985 to enable the Department to redirect its resources and to focus on the priority goals and objectives of the past administration.

In place of the Land Management Division, the interim organization consists of a Planning Office, a Land Development Division and an Income Property Division. The interim organization is unofficial and subject to further review and revision.

Planning Activities

The Anahola-Kamalomalo and Moloaa Development Plan and the Waimanalo Management Plan were near finalization in the fiscal year. Planning activities also included archaeological and other natural resource assessments of areas intended for land use or development. Biological surveys were accomplished through The Nature Conservancy's "Hawaii Heritage Program." Archaeological inventory surveys were also conducted.

Department-wide strategic planning and policy analysis activities were also initiated during the fiscal year.

Land Development Activities

A new process for managing the statewide capital improvement program was developed in the fiscal year. This process enabled the department to identify, rank, select, and schedule projects for implementation over a ten-year period.

The priority accorded to projects which provide infrastructure improvements to unimproved homestead lots awarded under the Acceleration Program reflects the department's commitment to lessees who selected lots under this program.

Major projects undertaken during fiscal year 1987-88 include:

- Design projects initiated: a 56-lot residential subdivision at Waimanalo, Oahu.
- Construction projects initiated: Papakolea Road



TOP The Department of Hawaiian Home Lands capital improvement program consists of 133 projects totaling \$176.3 million. The plan proposes development of the projects over a 10-year period and infrastructure for over 5,400 homestead lots.

BOTTOM Homestead lessees break ground for the start of construction at the Kekaha Residence Lots, Unit 2. The \$630,000 project calls for the construction of on-site improvements to develop 21 single-family residential lots. Scheduled completion is July 1989. The completion of this project will mark the first area where no lessee from the acceleration program is waiting for infrastructure improvements.

Improvements, \$270,000; on-site improvements for a 50-lot subdivision, Panaewa Residence Lots, Unit 4, \$910,000; on-site improvements for a 33-lot subdivision, Paukukalo Residence Lots, Unit 3, Phase 3, \$950,000; on-site improvements for a 21-lot subdivision, Kekaha Residence Lots, Unit 2, \$630,000.

- Construction projects completed: Waimanalo Residence Lots, Gravity Sewer System, Section 4, \$1,662,000 and an 11-lot subdivision, Paukukalo Residence Lots, Unit 3, Phase 2, \$150,000.

Papakolea Road improvements were done jointly with the City and County of Honolulu. Waimanalo



Construction of on-site improvements to develop 33 single-family residential lots at Paukukalo, Maui, continues. Completion date of the \$950,000 Paukukalo Residence Lots, Unit 3, Phase 3 project is October 1989.

Residence Lots, Gravity Sewer System, Section 4, was done in cooperation with the federal government and the City and County of Honolulu.

Income Producing Activities

During this past fiscal year, twenty-eight (28) lease rental reopeners were finalized which resulted in additional rents of \$1.079 million. Most of this increase (\$986,000) resulted from 14 reopeners affecting leases within the Shafter Flats Industrial Subdivision on Oahu.

In addition, the division recommended and received approvals during the fiscal year for the following:

New General Leases	2
New Revocable Permits	1
New Licenses	17
New Rights of Entry	2
Assignments of Leases	6
Consents to Mortgage	7
Approvals of Construction Plans	7
Lease Rental Reopeners	28
Consents to Sublease	18
Lease Termination	1

Two new leases were also awarded. Fair Contracting Company, Ltd., was the successful bidder at public auction for a 0.579 acre parcel of vacant industrial zoned land at Kaei Hana I, Waialae, Hawaii. The department also issued a general lease to the Waiānae District Comprehensive Health and Hospital Board, Inc. for 2.619 acres of land at Luāluālei, Waiānae. This area will allow this community-owned and operated non-profit medical and health facility to provide additional health services for those people living on the leeward side of Oahu. The Panawewa and Kawaihae economic develop-

ment plans, which were accepted by the Hawaiian Homes Commission in June, 1986, continued to be implemented. Request for General Plan amendments involving over 250 acres of income land are under review by the Hawaii County Council. Plans for the extension of Holomua Street in Panawewa were completed. A \$1.4 million construction contract was awarded for the extension of Puainako and Makaala Streets and lot subdivision and improvements to our lands around the Prince Kuhio Shopping Plaza. Funds transferred from the department were used to construct a Department of Transportation street light project to ease traffic congestion on the Puainako Street artery and improve access to our lands.

Discussions have been held with other state agencies to coordinate the development of our Kawaihae lands with other projects such as the Waimea-Kawaihae Road, Kawaihae boat harbor, and exploratory water well drilling. An allotment of \$150,000 has been approved to finance a feasibility and site study for a proposed Hawaiian Center to accommodate the department and other agencies serving Hawaiians.

Land tenure reports covering land ownership for nine tracts of Hawaiian home lands are at various stages of completion. The reports assist in identifying boundaries at the time of passage of the Hawaiian Homes Commission Act.

LAND USE SUMMARY

Land Use Summary As of June 30, 1988

Use:	Homestead Use			General Leases	Licenses	Others	Total Acreage
	Homes	Farms	Ranches				
Acreage	2,363	11,704	18,646	89,873	1,018	63,809	187,413

Land Use Summary By Island As of June 30, 1988

Acreage Use	Hawaii	Kauai	Maui	Molokai	Oahu	Total Acreage
Homesteads	20,943	831	541	9,477	921	32,713
General Leases	50,284	16,373	20,676	723	1,817	89,873
Licenses	112	7	6	824	69	1,018
Others	36,544	1,358	7,772	14,342	3,793	63,809
Totals	107,883	18,569	28,995	25,366	6,600	187,413

Revenue Producing Land Summary As of June 30, 1988

Island	Hawaii	Kauai	Maui	Molokai	Oahu	Total
Acreage	56,951	16,697	20,873	7,990	1,968	104,479
Income	\$1,056,923	\$109,248	\$60,819	\$66,523	\$1,505,174	\$2,798,687

Income By Use Summary As of June 30, 1988

Use	Hawaii	Kauai	Maui	Molokai	Oahu	Totals \$ Per Use
Industrial Leases	\$ 557,700	\$ —	\$ —	\$ —	\$1,296,554	\$1,854,254
Commercial Leases	183,550	—	—	—	—	183,550
Pasture/Agri Leases	220,203	3,500	58,246	14,017	22,940	318,906
*Other Leases	11,037	1,900	620	18,560	35,568	67,685
DLNR Leases	—	71,005	—	—	—	71,005
Revocable Permits	67,505	32,840	874	10,000	36,537	147,756
Right of Entry Permits	15,000	—	—	20,200	—	35,200
Licenses	1,928	3	1,079	3,746	113,575	120,331
Total Income By Island	\$1,056,923	\$109,248	\$60,819	\$66,523	\$1,505,174	\$2,798,687

*Includes Leases for Utilities, Public Service and Government Purposes

Financial Statements

- Combined Balance Sheets
- Combined Statements of Revenues, Expenditures and Changes in Fund Balance
- Administrative and Operating Costs
- Notes to Financial Statements

GENERAL LEDGER			
ACCOUNT OPERATING FUND			
SHEET NO. 3			
PRINTED IN U.S.A.			
	DATE	DESCRIPTION	POSTING REFERENCE
	19 87		
1	9 87	94-006	JV-181
2	1	86-006	"
3	9 87	86-015	JV-181
4	1	87-015	"
5	1	88-015	"
6	9 87		JV-233 621
7	9 87		SC-99
8	9 87		SC-112
9	9 87		CR 1600 16
10	9 87		JV-258 11
11	9 87		JV-271
12	9 87		JV-237 47
13	9 87		JV-227
14	9 87		

Department of Hawaiian Home Lands
COMBINED BALANCE SHEET
 For The Year Ended June 30, 1988

	Home Loan Fund	General Loan Fund	Trust Fund	Operating Fund	Receipts Fund	Native Hawaiian Rehabili- tation Fund	Adminis- tration Account	Temporary Deposit/ Clearing Account	TOTAL ALL FUNDS
ASSETS									
CASH	\$ 13,368	\$ 39,983	\$ 100	\$ 149,812	\$ -	\$ 21,224	\$ 72,716	\$ 35,327	\$ 332,530
Cash in Safe Treasury									
Short-Term Investments	189,500	7,096,562	856,500	4,354,631	-	4,357,755	2,336,000	-	19,190,948
Total Cash	\$ 202,868	\$ 7,136,545	\$ 856,600	\$ 4,504,443	-	\$ 4,378,979	\$ 2,408,716	\$ 35,327	\$ 19,523,478
RECEIVABLES									
Loans	\$ 3,737,068	\$ 35,440,667	-	-	-	\$ 50,140	-	-	\$ 39,227,875
Accounts	-	-	-	\$ 3,768	\$ 3,737	-	-	-	7,505
Accrued Interest on Loans	-	37,097	-	20,866	1,121,540	3,189	-	-	1,182,692
Gen Leases & Revoc Permits	-	-	-	-	-	-	\$ 2,701,171	-	2,701,171
Accrued Int on Investments	-	-	-	597	56,087	19,476	5,591	-	81,751
Due from Other Funds	-	-	-	1,548	-	-	-	-	1,548
Others	4,891	24,950	-	9,642	-	-	-	\$ 1,332	40,815
Total Receivables	\$ 3,741,959	\$ 35,502,714	-	\$ 36,421	\$ 1,181,364	\$ 72,805	\$ 2,706,762	\$ 1,332	\$ 43,243,357
IMPROVEMENTS PURCHASED									
	\$ 41,427	\$ 220	-	-	-	-	-	-	\$ 41,647
TOTAL ASSETS	\$ 3,986,254	\$ 42,639,479	\$ 856,600	\$ 4,540,864	\$ 1,181,364	\$ 4,451,784	\$ 5,115,478	\$ 36,659	\$ 62,808,482
LIABILITIES AND FUND BALANCE									
LIABILITIES									
Accounts Payable	\$ 187,501	\$ 12,405	-	-	-	-	-	-	\$ 199,906
Due to Other Funds	-	-	-	-	-	-	-	\$ 1,548	1,548
Accrued Interest Payable	-	28,093	-	-	-	-	-	-	28,093
Notes Payable	-	2,418,141	-	-	-	-	-	-	2,418,141
Others Payable	-	515	-	-	-	-	-	35,111	35,626
Loan Commitments	-	370	-	-	-	-	-	-	370
Contracts Payable	-	11,714	-	-	-	-	-	-	11,714
Advance Payments of Lease Rent	-	-	-	\$ 30,828	-	-	-	-	30,828
Total Liabilities	\$ 187,501	\$ 2,471,238	-	\$ 30,828	-	-	-	\$ 36,659	\$ 2,726,226
FUND BALANCES									
Reserved for Loans and Loan Commitments	\$ 2,800	\$ 1,007,111	-	-	-	\$ 1,066	-	-	\$ 1,010,977
Reserved for Encumbrances	183,128	4,563	-	\$ 177,390	-	157,989	\$ 229,088	-	752,158
Unreserved - Undesignated	3,612,825	39,156,567	\$ 856,600	4,332,646	\$ 1,181,364	4,292,729	4,886,390	-	58,319,121
Total Fund Balances	\$ 3,798,753	\$ 40,168,241	\$ 856,600	\$ 4,510,036	\$ 1,181,364	\$ 4,451,784	\$ 5,115,478	-	\$ 60,082,256
TOTAL LIABILITIES AND FUND BALANCES	\$ 3,986,254	\$ 42,639,479	\$ 856,600	\$ 4,540,864	\$ 1,181,364	\$ 4,451,784	\$ 5,115,478	\$ 36,659	\$ 62,808,482

Department of Hawaiian Home Lands
COMBINED STATEMENT OF REVENUES, EXPENDITURES AND CHANGES IN FUND BALANCE
For The Year Ended June 30, 1988

	Home Loan Fund	General Loan Fund	Trust Fund	Operating Fund	Receipts Fund	Native Hawaiian Rehabili- tation Fund	Adminis- tration Account	Temporary Deposit/ Clearing Account	TOTAL ALL FUNDS
REVENUES									
General Leases, Other Land	-	-	-	-	-	-	\$1,857,905	-	\$ 1,857,905
Licenses & Rock Sales	-	-	-	-	-	\$ 492,109	-	-	492,109
Sugar & Water Licenses	-	-	-	\$ 10,337	\$ 676,838	236,753	121,236	-	1,045,164
Interest Income on Investments	-	-	-	96,196	2,841,669	1,471	-	-	3,149,288
Interest Income on Loans	-	\$ 209,952	-	99,461	-	-	8,889	-	108,350
Miscellaneous	-	-	-	-	-	\$ 730,333	\$1,988,030	-	\$ 6,652,816
TOTAL REVENUES	-	\$ 209,952	-	\$ 205,994	\$ 3,518,507	-	-	-	-
EXPENDITURES									
Operating	-	-	\$ 150,000	\$ 1,665,087	-	-	\$2,783,085	-	\$ 4,805,810
Interest on Notes Payable	-	\$ 196,729	-	-	-	\$ 207,638	-	-	196,729
Capital Projects	-	-	-	-	-	-	-	-	0
TOTAL EXPENDITURES	-	\$ 196,729	\$ 150,000	\$ 1,665,087	-	\$ 207,638	\$ 2,783,085	-	\$ 5,002,539
Excess (Deficiency) of REVENUES Over EXPENDITURES	-	\$ 13,223	\$ (150,000)	\$ (1,459,093)	\$ 3,518,507	\$ 572,695	\$ (795,055)	-	\$ 1,650,277
OTHER FINANCING SOURCES (USES)									
Transfers In	-	-	\$ 1,000,000	\$ 2,454,946	-	-	\$ 950,037	-	\$ 4,404,983
Transfers Out	-	\$ (1,000,000)	6,500	-	\$ (3,404,983)	-	-	-	(4,404,983)
Other Sources (Uses)	-	-	-	-	-	-	-	-	6,500
TOTAL OTHER FINANCING SOURCES (USES)	-	\$ (1,000,000)	\$ 1,006,500	\$ 2,454,946	\$ (3,404,983)	-	\$ 950,037	-	\$ 6,500
Excess (Deficiency) of REVENUES and OTHER SOURCES Over EXPENDITURES and OTHER USES	-	\$ (966,777)	\$ 856,500	\$ 995,853	\$ 113,524	\$ 572,695	\$ 154,982	-	\$ 1,656,777
Fund Balances as of July 1, 1987	\$ 3,798,753	\$ 41,128,624	\$ 100	\$ 5,540,454	\$ 1,073,268	\$ 3,929,089	\$ 5,531,404	-	\$ 61,001,692
Prior Period Adjustments	-	\$ 26,394	-	\$ (2,026,771)	\$ (5,428)	-	\$ (570,908)	-	\$ (2,576,213)
FUND BALANCE as of June 30, 1988	\$ 3,798,753	\$ 40,168,241	\$ 856,600	\$ 4,510,036	\$ 1,181,364	\$ 4,451,784	\$ 5,115,478	-	\$ 60,082,256

Department of Hawaiian Home Lands
ADMINISTRATIVE AND OPERATING COSTS
 For The Fiscal Years Ended June 30, 1988 And 1987

	1988 Allotments	1988 Expenditures	1987 Expenditures
PERSONAL SERVICES			
Personal Services	\$1,972,380	\$1,837,066	\$1,337,735
Fringe Benefits	480,845	461,422	334,614
Encumbrances	-	13,397	9,083
Total Personal Services	\$2,404,225	\$2,311,885	\$1,681,432
OTHER			
Other Personal Services			\$ 287
Materials and Supplies	\$ 162,215	\$ 90,072	79,523
Communications	25,729	49,884	79,284
Travel and Subsistence	78,191	53,841	70,347
Freight and Delivery	500	1,895	2,128
Printing and Advertising	63,045	25,055	25,374
Utilities	966	8,004	6,891
Rentals	-	1,821	3,000
Repairs and Maintenance	-	39,260	25,757
Insurance and Bond	750	2,483	2,772
Benefit Payments	9,685	6,776	18,454
Other Miscellaneous Expenditure	8,942	14,136	7,701
Interest	-	7,174	8,148
5% Special Fund Assessment	139,913	4,797	-
Training	21,550	10,220	15,495
Services On A Fee Basis	-	21,752	6,521
Equipment	-	-	1,522
Gratuitous From Personal Services)	250,000	-	-
Encumbrances	-	215,691	163,881
Total Other	\$ 760,986	\$ 551,861	\$ 517,035
TOTAL	\$3,165,211	\$2,863,746	\$2,198,467

Department of Hawaiian Home Lands
NOTES TO FINANCIAL STATEMENTS
For The Year Ended June 30, 1988

1. RESERVE FOR GUARANTEE LOANS

The Loan Guarantee Fund was established to support the Department's guarantee of repayment of loans made by government agencies or private lending institutions to those holding leases or licenses issued under Section 207 of the Hawaiian Homes Commission Act of 1920, as amended. Act 249 consolidated the Loan Guarantee Fund under the General Loan Fund, which at June 30, 1988 is contingently liable for the following:

LENDER	AMOUNT
Farmer's Home Administration (FmHA)	\$6,614,177.87
Model Cities	44,802.10
Housing Finance and Development Corp (GHA)	2,386,516.16
Small Business Administration (SBA)	11,400.00
Molokai Electric Co., Ltd.	50,001.80
Maui County	113,252.00
Kauai PCU	50,000.00
FHA/HUD (Section Financing)	145,000.00
Total	\$9,623,149.93

2. NOTES PAYABLE

Table I below is a summary of the Department's notes payable to Housing Finance and Development Corporation, previously known as Hawaii Housing Authority (HHA), and Model Cities Development Corporation.

Annual principal maturities in the next five years are as follows: \$528,000 in 1989, \$568,000 in 1990, \$502,000 in 1991, \$364,000 in 1992 and \$277,000 in 1993.

3. ACCUMULATED VACATION & SICK LEAVE
In accordance with the general practice followed by other state agencies, the department does not reflect accrued and potential liability for earned vacation and sick leave credits.

The State has provided for the recognition of a liability in the general long-term debt account group for liabilities associated with Governmental Fund compensated absences programs which are not expected to be liquidated with expendable available resources. Accordingly, the State provided for the department's accumulated vacation accrual of approximately \$463,000 at June 30, 1988.

Sick leave accumulates at the rate of one and three-quarters working days for each month of

service without limit, but can be taken only in the event of illness and is not convertible to pay upon termination of employment. However, a state employee who retires or leaves government service in good standing with 60 days or more of unused sick leave is entitled to additional service credit in the retirement system. Accumulated sick leave was approximately \$910,000 at June 30, 1988, and has not been accrued in the financial statements.

4. EMPLOYEES' RETIREMENT SYSTEM

All eligible employees of the department are required by Chapter 88, HRS, to become members of the Employees' Retirement System of the State, which provides basic pension benefits.

Actuarial valuations are made for the entire system and are not separately computed for the State and each county. The department's and other state agencies' share of the retirement system expense for the fiscal year ended June 30, 1988, was included in the general appropriation bill as an item to be expended by the Department

Table I
NOTES PAYABLE TO HOUSING FINANCE AND DEVELOPMENT CORPORATION

Lender	Beginning Principal Bal 7/01/87	Ending Principal Bal 6/30/88	6/30/88 Accrued Interest	Monthly Principal & Int Payment	Interest Rate	Date of Notes	Due Date	Original Principal Amount
HFDG (GHA)	\$2,873,037	\$486,521	\$14,916	\$67,125	7 1/2%	1970-75	1990-95	\$7,090,882
Model Cities	31,625	-	13,177	-	2 1/2%	1971	1991	31,625
Total	\$2,904,662	\$486,521	\$28,093					\$7,122,507

* Principal and Interest payable at maturity

of Budget and Finance and is not reflected in the department's financial statements.

5. INSURANCE COVERAGE

The State is self-insured for substantially all perils including workers' compensation. Expenditures for workers' compensation are appropriated annually and are not considered material.

6. GENERAL LEASES RECEIVABLE

Included in the Administration Account as general lease rents receivable is \$2,479,926 due

from the Department of Land and Natural Resources. As part of the settlement agreement over back rents, DLNR will make payments to DHHH until the balance is paid. During the fiscal, \$350,672 was received, resulting in the current balance receivable from DLNR.

7. CAPITAL PROJECTS

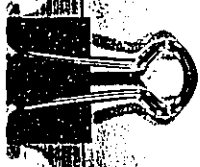
During the fiscal year, a net of 2,135,000 in general obligation bond fund appropriations was authorized by the State Legislature. The Governor approved general obligation bond fund allotments totaling \$3,545,000 during the year, while expenditures for the various capital improve-

ment projects amounted to \$3,519,012. Total appropriation balance outstanding at June 30, 1988 was \$7,749,625.97.

**8. GENERAL FIXED ASSETS
ACCOUNT GROUP**

Capital assets constructed for or purchased by the department are recorded as expenditures in the year in which the cost is incurred. These assets are not reflected as assets in the financial statements, but are reflected in the general fixed assets account group of the State.

Appendix

- 1988 Legislation
 - CIP Projects
 - Operating Funds Projects Summary
 - Executive Orders on Hawaiian Home Lands
 - Hawaiian Home Lands Under DLNR Management
 - DHHL General Lease Summary
 - Subleases
 - Licenses
 - Revocable Permits
 - Rights of Entry
 - Hawaiian Home Lands Employees
- 

Appendix 1988 LEGISLATION

There were no amendments to the Hawaiian Homes Commission Act, 1920, as amended, during the 1988 Session of the State Legislature.

In legislation affecting the operations of the department, Act 395 was enacted to provide Native Hawaiian individuals, Native Hawaiian organizations, the Office of Hawaiian Affairs and Hawaiians qualified to succeed to a homestead lease under Section 209 of the Hawaiian Homes Commission Act of 1920, as amended (HHCA), the right to sue in courts of the State to enforce provisions of the HHCA. The Office of Hawaiian Affairs, Native Hawaiian individuals and Native Hawaiian organizations were also provided the right to sue in courts of the State to enforce provisions of the Native Hawaiian public trust under Article XII, Sections 4, 5, and 6 of the State Constitution implementing Section 5(f) of the Admission Act.

Act 395 contains provisions which require that all administrative remedies must be exhausted before a suit is filed. Also contained were provisions intended to prevent the filing of frivolous claims. The application of the right to sue was prospective from July 1, 1988.

The legislation further provides the governor with the opportunity to resolve controversies which arose between August 21, 1959 and the effective date of the Act. The governor is given until 1991 to submit a proposal to the legislature for its approval. Should the governor fail to submit an acceptable proposal or should the legislature reject the proposal and no other means of resolving such controversies are made, claims for actual damages accruing from August 21, 1959 could be instituted.

The Supplemental Appropriations Act (Act 390) amended Act 216, SLH 1987, by appropriating a substantial amount of general funds to the department for its Capital Improvement Project (CIP) costs.

The following are the CIP appropriations made by Act 390, SLH 1988:

LMD 001 HAWAIIAN HOME LANDS DEVELOPMENT, STATEWIDE:

Development of Hawaiian home lands for residential, agricultural, and other purposes permitted by the Hawaiian Homes Commission Act, 1920, as amended, including plans, designs and the construction of on-site (such as grading, roads and utilities) and off-site improvements.

	FY 1988 (in thousands)	FY 1989	FUNDING SOURCE
Plans	200	240	
Design	2,000	800	
Construction	9,100	5,880	
Total Funding:	10,700	—	General Funds
	600	6,920	General Obligation Bonds

LMD 004 HAWAIIAN HOME LANDS ECONOMIC DEVELOPMENT, STATEWIDE:

Development of Hawaiian home lands for residential, agricultural, commercial, industrial, resort and other purposes permitted by the Hawaiian Homes Commission Act, 1920, as amended, including plans, designs and the construction of on-site (such as grading, roads, and utilities) and off-site improvements.

	FY 1988 (in thousands)	FY 1989	FUNDING SOURCE
Plans	150	325	
Design	775	90	
Construction	300	1,568	
Total Funding:	1,225	1,983	General Obligation Bonds—Reimbursable

LMD 005 WAIMANALO GRAVITY SEWER SYSTEM, SECTION 5, HAWAIIAN HOMES SUBDIVISION:

Design and construction of gravity sewer system to provide sewage disposal for existing and future homes in the Waimanalo Residence Lots subdivision.

	FY 1988 (in thousands)	FY 1989	FUNDING SOURCE
Design	125	—	
Construction	—	1,000	
Total Funding:	125	1,000	General Obligation Bonds

Appendix CIP PROJECTS (ON-GOING)

Capital Improvement Program projects financed by general obligation bonds provide new facilities or increase the value of existing fixed assets.

Summary of CIP Projects

USE	LOTS	AMOUNT
Agricultural Lots	205	\$2,540,000
Residential Lots	1,143	17,526,000
Industrial Lots	22	138,000
Commercial Lots	10	—
Other Projects	—	21,285,000
TOTAL STATE	1,380	*\$41,489,000

* Does not include:
Statewide Residential Loan Fund Capitalization.....\$30,060,000
Statewide Replacement Home Loan Fund Capitalization.....9,825,000

Hawaiian Loan Guarantee Fund Capitalization.....\$2,000,000
Statewide Farm Loan Capitalization.....1,485,000

CIP Projects by Islands

PROJECT	LOTS	APPROPRIATION	AMOUNT	DESCRIPTION OF PROJECT	DESIGN START COMP	CONST START COMP
KAUAI						
Anahola Residence Lots Drainage Improvements	7	Act 214/79, F-31	10,000	Plans and designs of site improvements to permit home construction on 7 lots	08/82 10/83	
Anahola Residence Lots, Unit 3	36	Act 214/79, F-33 Act 300/85, F-1	75,000 500,000	Plans, designs and construction of site improvements for 36 residential lots	08/82 06/84	03/87 12/88
Kekaha Residential Subdivision, Unit 2	21	Act 214/79, F-32 Act 300/85, F-1	50,000 630,000	Plans, designs and construction of site improvements for 27 residential lots	08/82 12/87	12/88 10/89
HHL Project - Anahola, Kauai		Act 301/83, F-1	120,000	Plans for development of Hawaiian Home Lands (2500+/- acres)	05/86 10/87	
TOTAL KAUAI	64		\$1,385,000			
HAWAII						
Keaukaha Residential Subdivision:		Act 195/75, 3-G-1 Act 195/75, 2-G-2 Act 226/76, 2-G-1 Act 214/79, F-28 Act 1/81, F-10	\$85,000 17,000 50,000 390,000 40,000			
Miscellaneous Lots	33			Surveying and miscellaneous improvements necessary to prepare lots for residential award	12/77 02/80	04/81 12/82
Increment 1	32			Plans, designs and construction of site improvements for new residential lots - 1st increment	12/77 12/80	08/82 09/83
Increment 2	22			Plans and designs of site improve- ments for the 2nd increment	12/77 06/88	
Increment 3	61			Plans and designs of site improvements for 3rd and last increment	12/77 06/88	
Keaukaha Residence Lots: Gravity Sewer System		Act 301/83, F-5	100,000	Plans and designs of 33,000' of gravity sewer lines	06/86 05/87	
Panewa Residence Lots:		Act 214/79, F-24 Act 300/85, F-1 Act 301/83, F-9	65,000 1,840,000 90,000			
Unit 3	42			Plans, designs and construction of site improvements for 42 residential lots	08/82 04/85	05/87 09/88

PROJECT	LOTS	APPROPRIATION	AMOUNT	DESCRIPTION OF PROJECT	DESIGN START COMP	CONST START COMP
Unit 4	50			Plans, designs and construction of site improvements for 50 residential lots	07/85 10/87	07/88 06/88
Panaewa Farm Lots:		Act 195/75, 2-G-2 Act 10/77, A-3 Act 10/77, A-6 Act 214/80, A-5A Act 301/83, F-8	81,000 2,060,000 49,000 150,000 200,000			
Phase 1	(E-67) 46			Plans, designs and construction of roadways and utilities for 67 existing lots and 92 (46 new awards, 46 adjacent lots awarded later to same lessee) new lots.	02/77 05/79	06/79 06/81
Phase 2	66 (E-26)			Plans and designs of roadways and utilities for 26 existing lots and approximately 66 new lots.	05/85 09/86	
Puukapu & Kawaihae Fencing		Act 300/85, F-1	129,000	Install stockproof boundary fencing		07/88 12/88
Kanoelohua Ave & Makaala St. Traffic Signal System		Act 300/85, F-1B	132,000	Install traffic lights at intersection		06/87 11/87
Makaala & Puunako Streets Extension and Adjacent Areas		Act 300/85, F-1B Act 390/88, F-20	1,473,000 150,000	Plans, designs and construction of site improvements for Makaala and Puunako Sts extensions and adjacent areas.	03/88 09/88	09/88 10/89
Kawaihae Residential Subdivision:		Act 10/77, F-6	50,000			
Unit 1	20			Plans and designs of site improvements for 1st unit of 40 lot residential development	12/77 01/81	Deferred
Unit 2	20			Plans and designs of site improvements for 2nd unit	12/77 01/81	Deferred
HHL Project - Waimea, Hawaii		Act 214/79, A-8	75,000	Plans for development of Hawaiian Home Lands (11,000 +/- acres)	01/82 01/83	
HHL Project - Kawaihae, Hawaii		Act 214/79, F-36	50,000	Plans for development of Hawaiian Home Lands (10,100 +/- acres)	07/82 05/85	
Kaei Hana I and Adjacent Areas	32	Act 300/85, F-18	138,000	Plans and designs of site improvements for 22 industrial lots and 10 commercial lots	01/87 01/88	Deferred
(E - Existing) TOTAL HAWAII	(E-93) 424		\$7,414,000			
MAUI						
Paukukalo Drainage Project		Act 218/74, F-8	\$250,000	To provide the extension of the drainage system from Hawaiian Home Lands to the ocean	03/75 01/79	02/79 03/81
Paukukalo Residence Lots:		Act 10/77, F-5 Act 300/80, F-26B Act 1/81, F-8 Act 300/85, F-1	150,000 1,200,000 580,000 1,100,000			
Unit 3, Phase 1	49			Plans, designs and construction of site improvements for 1st phase of 93 lot residential development	10/77 01/81	01/82 04/83
Unit 3, Phase 2	11			Plans, designs and construction of site improvements for 11 residential lots	10/77 01/81 03/85 11/86	04/87 10/87
Unit 3, Phase 3	33			Plans, designs and construction of site improvements for 33 residential lots	10/77 01/81	07/88 10/89
Walehu Kou Subdivision	40	Act 300/85, F-1	55,000	Plans and designs of site improvements for 40 residential lots	02/87 01/88	
HHL Project - Kula, Maui		Act 214/79, A-7	50,000	Plans for development of Hawaiian Home Lands (6,100 +/- acres)	06/82 09/84	
TOTAL MAUI	133		\$3,385,000			

PROJECT	LOTS	APPROPRIATION	AMOUNT	DESCRIPTION OF PROJECT	DESIGN START COMP	CONST START COMP
MOLOKAI						
Molokai Water System Improvements:		Act 195/75, A-14	\$1,000,000			
		Act 10/77, A-2	1,915,000			
		Act 214/79, A-5	265,000			
		Act 300/80, A-5	1,160,000			
		Act 1/82, F-7A	1,000,000			
		Act 300/85, F-1A	1,950,000			
Deepwell				Construct additional well for Molokai Water System	04/78 05/79	06/79 09/79
Phase 1				Upgrade and improve existing source and storage system	04/78 06/79	07/79 08/81
Phase 2A				Improve transmission main to Kalamaula and construct reservoir	03/80 08/81	06/82 07/83
Phase 2B				Upgrade and improve distribution system in Kalamaula	03/80 05/84	07/84 11/85
Phase 3A				Upgrade and improve transmission and distribution system in Hoolehua	07/80 09/86	02/87 11/88
Phase 3B				Plans and designs to upgrade and improve Hoolehua water system	07/80 10/86	
HHL Project - Kalamaula, Molokai		Act 214/79, F-35	75,000	Plans for development of Hawaiian Home Lands (6,000 +/- acres)	07/82 09/83	
HHL Project - Hoolehua, Molokai		Act 301/83, F-2	120,000	Plans for development of Hawaiian Home Lands (13,100 +/- acres)	03/85 11/86	
TOTAL MOLOKAI			\$7,485,000			
OAHU						
Nanakuli Residence Lots:		Act 195/75, F-1	\$3,232,000			
		Act 214/79, F-23	70,000			
		Act 214/79, F-30	100,000			
		Act 300/80, F-23	1,330,000			
		Act 301/83, F-7	130,000			
5th Series, Inc. 1	103			Plans, designs and construction of site improvements for 103 residential lots	03/75 07/79	08/79 06/81
5th Series, Inc. 2	23			Plans, designs and construction of site improvements for 23 residential lots	03/75 09/80	10/80 12/81
5th Series, Inc. 3	55			Plans and designs of site improvements for 55 residential lots	03/75 11/87	
6th Series	38			Plans and designs of site improvements for 38 residential lots	06/86 11/87	02/89 01/90
Nanakuli Interim Sewage Disposal (Group Cesspools)				Project was required prior to further development of lands	06/76 07/79	08/79 06/81
Nanakuli Residence Lots, Gravity Sewer System		Act 301/83, F-6	100,000	Plans and designs of 24,000' of gravity sewer lines	08/86 07/88	
Nanakuli Drainage Project		Act 218/74, F-6	1,307,000	Project was required by City and County of Honolulu prior to further development of lands	03/75 12/77	01/78 06/79
Nanakuli Road Improvements:		Act 218/74, F-6	73,000			
		Act 195/75, F-4	1,294,000			
		Act 195/75, F-3	890,000			
		Act 10/77, F-3	1,535,000			
Haleakala Avenue				Plans, designs and construction of improvements for Haleakala Ave.	06/76 06/79	07/79 01/81
Mano, Kauhala, Kawao and Pillau Avenues				Plans, designs and construction of improvements for Mano, Kauhala, Kawao and Pillau Avenues	01/77 12/78	01/79 06/80

PROJECT	LOTS	APPROPRIATION	AMOUNT	DESCRIPTION OF PROJECT	DESIGN START COMP	CONST START COMP
Pohakunui, Laumania, Piliokahi and Keaulana Avenues				Plans and designs to improve and upgrade Pohakunui, Laumania, Piliokahi and Keaulana Avenues	02/77 02/81	
HHL Project - Nanakuli, Oahu		Act 214/79, F-30	100,000	Plans for development of Hawaiian Home Lands (2,300 +/- acres)	06/82 05/85	
Waianae Residence Lots:		Act 218/74, F-4	323,000			
		Act 218/74, F-4	185,000			
		Act 195/75, F-2	1,170,000			
		Act 214/79, F-25	1,650,000			
Unit 2A-1	119			Plans, designs and construction of site improvements for 119 residential lots	03/75 06/79	07/79 05/81
Unit 2A-2	50			Plans and designs of site improve- ments for 50 residential lots	03/75 06/88	
Unit 2A-3	71			Plans and designs of site improve- ments for 71 residential lots	03/75 06/88	
Unit 2B	94			Plans and designs of site improve- ments for 94 residential lots	03/75 06/88	
Waianae Reservoir		Act 218/74, F-4	1,630,000	Project was required prior to further development of lands	03/75 06/79	07/79 03/81
Kaupuni Neighborhood Park, Waianae		Act 214/79, F-34	200,000	Plans, designs and construction of neighborhood park at Waianae	01/80 04/82	09/82 06/83
		Act 300/80, A-5	78,000			
Kaupuni Neighborhood Park, Comfort Station/Pavilion		Act 283/83, III-U-14	30,000	Construction of Comfort Station/ Pavilion		10/86 02/87
		Act 287/84, III-U-38	85,000			
Papakolea Road Improvements		Act 300/85, F-1	271,000	Upgrade roads to C&C Standards		02/88 07/88
Waianae Valley Road Improvements		Act 285/84, F-9A	1,500,000	Upgrade road and utility improve- ments; funds delegated to City		03/85 12/86
Waimanalo Master Plan		Act 218/74, F-5	128,000	Master plan of entire Waimanalo area	01/77 06/85	
Waimanalo Residence Lots:		Act 1/81, F-7	680,000			
		Act 1/81, F-8	154,000			
		Act 214/79, F-26	60,000			
		Act 300/85, F-1	1,310,000			
Unit 6, Increment 1	23			Plans, designs and construction of site improvements for 23 residential lots	01/77 11/80	11/84 4/86
Unit 6, Increment 2	15			Plans, designs and construction of site improvements for 15 residential lots	01/77 11/80	10/87 12/88
Unit 7	15			Plans, designs and construction of site improvements for 15 residential lots	09/82 04/85	09/87 09/88
Waimanalo Residence Lots, Unit 8	60	Act 300/85, F-1	155,000	Plans and designs of site improve- ments for 60 residential lots	01/87 06/88	
Makapuu Interceptor Sewer		Act 214/79, F-38	75,000	Project is required prior to further development of lands	08/82 04/84	12/84 03/86
		Act 1/81, F-7	600,000			
Waimanalo Residence Lots, Gravity Sewer System, Section 4		Act 301/83, F-4	100,000	Plans, designs and construction of 18,000' of gravity sewer lines	08/85 05/86	09/86 02/88
		Act 301/83, F-4	1,000,000			
Waimanalo Residence Lots, Gravity Sewer System, Section 5		Act 390/88, F-22	125,000	Plans and designs of gravity sewer lines	12/88 11/89	
Hawaiian Center Facility		Act 390/88, F-23	150,000	Feasibility and site study for a proposed Hawaiian Center		
TOTAL OAHU	666		\$21,820,000			

Appendix OPERATING FUND PROJECTS SUMMARY

On July 1, 1986, Act 249, SLH 1986 combined the former Development Fund with the the former Operating Fund into the present Hawaiian Home Operating Fund. Development Fund Projects have been retitled under the Operating Fund heading. Operating Fund Projects are Capital Improvement Program (CIP) projects financed by Department of Hawaiian Home Lands. These monies supplement CIP appropriations to improve and upgrade roads and utility systems and to construct site improvements for residential single family, agricultural, industrial and commercial developments.

CONTINUOUS PROJECTS	LOTS	ISLAND	AMOUNT	DESCRIPTION OF PROJECT	STATUS
Major Road Improvements		Oahu	\$122,000	Supplement CIP appropriations to upgrade roads and utility systems in Nanakuli to City & County of Honolulu standards	CONTINUOUS
Road Improvements		Statewide	552,200	Road repairs, maintenance and improvements	CONTINUOUS
Drainage Improvements		Statewide	143,800	Drainage maintenance and improvements to alleviate flooding	CONTINUOUS
Water Improvements		Statewide	9,700	Install water facilities	CONTINUOUS
Residential Lot Development	135	Oahu	172,000	Supplement CIP appropriations to construct site improvements	CONTINUOUS
Compensation to lessees	39	Statewide	52,000	Compensate lessees for their improvements affected by road and utility system improvements	CONTINUOUS
Consultant Services		Statewide	296,800	Engineering designs, plans and construction	CONTINUOUS
			33,200	Appraisals	CONTINUOUS
			35,000	Legal services	CONTINUOUS
Demolition and removal of existing structures	3	Statewide	16,000	Demolish and remove dilapidated structures for safety purposes	CONTINUOUS
Equipment and supplies		Statewide	56,000	Purchase, lease and/or repair equipment and supplies in conjunction with the development of the lands	CONTINUOUS
Miscellaneous Improvements Homestead Related	672	Statewide	140,700	Repairs and improvements; buildings, access roads, driveways, waterlines, sewerlines, walls, cesspools, fencing, guardrails, etc.	CONTINUOUS
Survey - Homestead Lots and Boundaries	87	Statewide	37,000	Subdivide, file plans and fees, stakeout, etc.	CONTINUOUS
Water Service (Domestic/Irrigation)	20	Statewide	40,000	Install water laterals to lots prior to award	CONTINUOUS
TOTAL	956		\$1,706,400		

Appendix EXECUTIVE ORDERS ON HAWAIIAN HOME LANDS

Land Under Executive Orders

ISLE/ACR.	#/USE	NAME	LOCATION	TMK	DATE ISSUED
HAWAII* 3,912	1271 Road Easement	USA-FAA	Keaukaha	2-1-13:09	11-10-48
HAWAII* 50,000	1280 Communications/Radar	USA-FAA	Keaukaha	2-1-13:08	11-23-48
OAHU* 132,000	382 Storage Areas	Dept. of the Navy	Lualualei	8-8-01:01 (P)	01-21-30
OAHU* 1,224,000	599 Communications/Radar	Dept. of the Navy	Lualualei	8-6-02:01	12-22-33

* Cancellation pending.

HAWAIIAN HOME LANDS UNDER DLNR MANAGEMENT

By Island

	HAWAII	KAUAI	MAUI	MOLOKAI	OAHU	TOTAL
Number	1	3	0	0	0	4
Acres	295	16,070	0	0	0	16,365
DHHL Annual Income	\$0	\$71,005	\$0	\$0	\$0	\$71,005

Use Summary

USE	NO.	ACREAGE	DHHL ANNUAL INCOME
Agriculture	2	16,044	\$71,005
Storage Area	1	26	0
Training	1	295	0
TOTAL	4	16,365	\$71,005

DLNR General Leases by Island

ISLE/ACR	#/USE	NAME	LOCATION/TMK	TERMS	REMARKS
HAWAII 295,000	S-3849 Training	USA-Army	Huonua 3-8-01:13	65 yrs. 08/17/64-08/16/2029 \$1.00 for term	
KAUAI 25,686	S-3852 Storage Areas	USA-Navy 14th Naval District, Navy 128, Box 94 FPO San Francisco 96610	Kekaha 1-2-02:29	65 yrs. 08/20/64-08/19/2029 \$1.00 for term	
KAUAI 14,558,000	S-4222 Agriculture	Kekaha Sugar Co., Ltd. 700 Bishop Street Honolulu, Hawaii 96801	Kekaha 1-2-02:23	25 yrs. 01/01/69-12/31/93 @ \$55,208.88 01/01/84	
KAUAI 1,485,850	S-4576 Agriculture	Lihue Plantation Co., Ltd. P.O. Box 3140 Honolulu, Hawaii 96803	Anahola/Kamalo 1155 PLAT 3003-D(1)	25 yrs. 12/15/77-12/14/02 @ \$15,796.50 12/15/92	

Appendix DHHL GENERAL LEASE SUMMARY & GENERAL LEASES

DHHL General Lease Summary by Island

	HAWAII	KAUAI	MAUI	MOLOKAI	OAHU	TOTAL
Number	70	2	3	6	31	112
acreage	49,989	303	20,676	723	1,817	73,508
DHHL Annual Income	\$972,490	\$5,400	\$58,866	\$32,577	\$1,355,062	\$2,424,395

DHHL General Lease Summary by Use

USE	DHHL NO.	ACREAGE	ANNUAL INCOME
Agricultural	5	661	\$17,517
Commercial	2	39	189,550
Dairy	2	74	10,095
Industrial	79	144	1,809,056
Pasture	11	72,027	291,295
Public Service	6	551	97,246
Public Utility	6	12	13,736
Residence	1	0	1,900
TOTAL	112	73,508	\$2,424,395

DHHL General Leases

ISLE/ACR.	#/USE	NAME	LOCATION/TMK	TERMS	REOPENINGS
HAWAII 9,699	102 Indus.	Akana Petroleum, Inc. 50 Kukila St. Hilo, Hawaii 96720	Waiakea 2-2-47:59	40 years 03-02-66/03-01-06 @ \$44,000	03-02-96
HAWAII 3,905	108 Indus.	Inter-Pacific Motors, Inc. P.O. Box 4397 Hilo, Hawaii 96720	Waiakea 2-2-60:75	65 years 11-01-66/01-31-31 @ \$14,530.20	11-01-91 11-01-11
HAWAII 1,245	109 Indus.	Hawaii Anthurium Growers Cooperative 170 Wiwoole St. Hilo, Hawaii 96720	Waiakea 2-2-60:64	65 years 09-01-66/08-31-31 @ \$5,206.20	09-01-91 09-01-11
HAWAII 33,793	110 Indus.	Yamada & Sons, Inc. P.O. Box 4699 Hilo, Hawaii 96720	Panaewa 2-1-25:01, 41, 42 & 84	65 years 11-01-66/10-31-31 @ \$19,045.80	11-01-91 11-01-11
HAWAII 1,085	113 Indus.	George R. Madden, Jr. 900 Lellani St. Hilo, Hawaii 96720	Waiakea 2-2-60:50 & 51	55 years 06-15-69/06-14-24 @ \$6,976	06-15-94 06-15-09
HAWAII 0,930	115 Indus.	Hawaiian Bitumuls and Paving Co. Division of Dillingham Construction Pacific, Ltd. P.O. Box 2240 Honolulu, Hawaii 96804	Waiakea 2-2-60:30 & 31	40 years 08-01-67/07-31-07 @ \$17,860	08-01-97
HAWAII 0,416	116 Indus.	Roy C. Myers 48 Kahoa St. Hilo, Hawaii 96720	Waiakea 2-2-60:67	40 years 09-01-67/08-31-07 @ \$1,740	09-01-87 09-01-97 Terminated 11-27-87
HAWAII 2,009	122 Indus.	Hilo Wood Treating, Inc. 66 Kukila St. Hilo, Hawaii 96720	Waiakea 2-2-47:60	40 years 10-01-67/09-30-07 @ \$14,768	10-01-97
HAWAII 0,930	126 Indus.	Big Island Toyota, Inc. 1 Kea St. Hilo, Hawaii 96720	Waiakea 2-2-60:71	55 years 01-01-68/12-31-22 @ \$18,286	01-01-88
HAWAII 0,620	127 Indus.	Oshiro Contractor, Inc. 153 Makaala St. Hilo, Hawaii 96720	Waiakea 2-2-60:35	40 years 01-01-68/12-31-07 @ \$1,754	01-01-88 01-01-98
HAWAII 7,078,000	128 Past.	C.R. Benlehr, Ltd. 1052 Lunaanala St. Kailua, Hawaii 96734	Piihonua 2-6-18:02	25 years 05-01-68/04-30-93 @ \$61,900	

ISLE/ACR.	#/USE	NAME	LOCATION/TMK	TERMS	REOPENINGS
HAWAII 0.810	129 Indus.	Industrial Steel Corp. 55 Kukula St. Hilo, Hawaii 96720	Waialakea 2-2-47:61	55 years 03-02-68/03-01-23 @ \$9,134	03-02-08
HAWAII 1.115	132 Indus.	Bayfront Service, Inc. 175 Wiwoole St. Hilo, Hawaii 96720	Waialakea 2-2-60:72	55 years 05-01-68/04-30-23 @ \$4,952	05-01-93 05-01-08
HAWAII 4.470	135 Utility	GTE Hawaiian Telephone Co., Inc. P.O. Box 2200 Honolulu, Hawaii 96801	Waialakea 2-2-47:63	65 years 11-01-68/10-31-33 @ \$10,676.40	11-01-93 11-01-13
HAWAII 5.800	136 Indus.	Pioneer Lumber Treating, Inc. 750 Kalaniana'ole Ave. Hilo, Hawaii 96720	Kaunakakai 6-1-06:11	65 years 9-01-68/08-31-33 @ \$24,000	09-01-93 09-01-13
HAWAII 0.742	140 Indus.	A & A Hawaii, Inc. 194 Wiwoole St. Hilo, Hawaii 96720	Waialakea 2-2-60:62 & 63	55 years 01-15-69/01-14-24 @ \$3,102	01-15-94 01-15-09
HAWAII 0.494	141 Indus.	Big Island Car Wash P.O. Box 4397 Hilo, Hawaii 96720	Waialakea 2-2-60:70	55 years 06-15-69/06-14-24 @ \$2,193	06-15-94 06-15-09
HAWAII 0.916	142 Indus.	Theo Davies Euromotors, Ltd. 704 Ala Moana Blvd. Honolulu, Hawaii 96813	Waialakea 2-2-60:68 & 69	55 years 06-15-69/06-14-24 @ \$4,068	06-15-94 06-15-09
HAWAII 4.880	143 Indus.	M. Sonomura Contracting Co., Inc. P.O. Box 1452 Hilo, Hawaii 96720	Panama 2-1-25:87	65 years 06-15-69/06-14-34 @ \$7,527	06-15-94 06-15-14
HAWAII 0.620	144 Indus.	Association of Balberde & Balberde 485 Hailai St. Hilo, Hawaii 96720	Waialakea 2-2-60:49	55 years 06-15-69/06-14-24 @ \$4,008	06-15-94 06-15-09
HAWAII 4.250	145 Indus.	Yamada & Sons, Inc. P.O. Box 4699 Hilo, Hawaii 96720	Panama 2-1-25:85	62-1/2 years 05-01-69/10-31-31 @ \$288	11-01-91 11-01-11
HAWAII 0.930	146 Indus.	George R. Madden, Jr. 900 Leilani St. Hilo, Hawaii 96720	Waialakea 2-2-60:52 & 53	55 years 06-16-69/06-15-24 @ \$4,082	06-16-94 06-16-09
HAWAII 0.930	147 Indus.	Fair Contracting Co., Ltd. 133 Makaala St. Hilo, Hawaii 96720	Waialakea 2-2-60:32 & 33	55 years 06-16-69/06-15-24 @ \$8,505	06-16-94 06-16-09
HAWAII 0.743	148 Indus.	Industrial Steel Corp. 55 Kukula St. Hilo, Hawaii 96720	Waialakea 2-2-47:62	53-1/2 years 09-01-69/03-01-23 @ \$8,390	09-01-08
HAWAII 0.465	151 Indus.	Fair Contracting Co., Ltd. 133 Makaala St. Hilo, Hawaii 96720	Waialakea 2-2-60:34	54 years 10 mos. 08-16-69/06-15-24 @ \$4,253	08-16-94 08-16-09
HAWAII 0.323	152 Indus.	Tom T. Okano Enterprises, Inc. 801 Wai'anuenue Ave. Hilo, Hawaii 96720	Waialakea 2-2-60:45	40 years 10-01-69/09-30-09 @ \$1,434	10-01-94
HAWAII 0.837	155 Indus.	Takahashi Brothers Trucking Service, Inc. 135 Holomua St. Hilo, Hawaii 96720	Waialakea 2-2-60:60	55 years 02-15-70/02-14-25 @ \$3,784	02-15-95 02-15-10
HAWAII 10.000	156 Indus.	Laupahoehoe Trans. Co., Inc. 35 Holomua St. Hilo, Hawaii 96720	Panama 2-1-25:89 & 132 to 140	65 years 04-01-70/03-31-35 @ \$16,400	04-01-95 04-01-15
HAWAII 0.930	158 Indus.	M. Sonomura Contracting Co., Inc. P.O. Box 1452 Hilo, Hawaii 96720	Waialakea 2-2-60:58 & 59	55 years 07-01-70/06-30-25 @ \$4,203.90	07-01-95 07-01-10
HAWAII 0.620	159 Indus.	Hawaii Paper Products, Inc. 167 Makaala St. Hilo, Hawaii 96720	Waialakea 2-2-60:36	35 years 07-01-70/06-30-05 @ \$4,202	07-01-90
HAWAII 0.465	160 Indus.	Jiro Tanaka P.O. Box 327 Kamuela, Hawaii 96743	Waialakea 2-2-60:57	40 years 11-01-70/10-31-10 @ \$9,228	11-01-95

ISLE/ACR.	#/USE	NAME	LOCATION/TMK	TERMS	REOPENINGS
HAWAII 0.930	161 Indus.	Talaloa Co., Inc. P.O. Box 182 Papaikou, Hawaii 96781	Waialake 2-2-60:37 & 38	55 years 11-01-70/10-31-25 @ \$4,860	11-01-90 11-01-05
HAWAII 0.930	163 Indus.	Holomua Street Partners c/o Hawaii Pipe & Supply 290 Sand Island Access Road Honolulu, Hawaii 96819	Waialake 2-2-60:47 & 48	55 years 11-01-70/10-31-25 @ \$4,860	11-01-90 11-01-05
HAWAII 2.337	164 Indus.	Mrs. Richard S.F. Lam 3890 Diamond Head Road Honolulu, Hawaii 96816	Waialake 2-2-60:83	65 years 11-01-70/10-31-35 @ \$9,445	11-01-95 11-01-15
HAWAII 0.666	165 Indus.	Trojan Lumber Co., Inc. P.O. Box 5057 Hilo, Hawaii 96720	Waialake 2-2-60:39	40 years 11-01-70/10-31-10 @ \$17,186	11-01-95
HAWAII 0.465	166 Indus.	Tajiri Enterprises, Inc. 100 Holomua St. Hilo, Hawaii 96720	Waialake 2-2-60:56	40 years 11-01-70/10-31-10 @ \$9,228	11-01-95
HAWAII 0.422	167 Indus.	Kurohara Shop For Men, Inc. 266 Makaala St. Hilo, Hawaii 96720	Waialake 2-2-60:84	40 years 11-01-70/10-31-10 @ \$8,358	11-01-95
HAWAII 0.465	168 Indus.	Frederick W. Jr. and Trudee K. Siemann 194 Holomua St. Hilo, Hawaii 96720	Waialake 2-2-60:46	40 years 02-01-71/01-31-11 @ \$9,228	02-01-96
HAWAII 0.465	169 Indus.	Big Isle Moving & Draying, Inc. 118 Holomua St. Hilo, Hawaii 96720	Waialake 2-2-60:54	40 years 02-01-71/01-31-11 @ \$9,228	02-01-96
HAWAII 0.465	170 Indus.	Sidney Lee dba Hawaii Island Glass 110 Holomua St. Hilo, Hawaii 96720	Waialake 2-2-60:55	40 years 02-01-71/01-31-11 @ \$9,228	02-01-96
HAWAII 0.370	171 Indus.	A & A Hawaii, Inc. 194 Wiwoole St. Hilo, Hawaii 96720	Waialake 2-2-60:41	55 years 02-01-71/01-31-26 @ \$2,322	02-01-91 02-01-06
HAWAII 0.364	172 Indus.	Eaves & Meredith Co., Ltd. 841 Mapunapuna St. Honolulu, Hawaii 96819	Waialake 2-2-60:42	55 years 02-01-71/01-31-26 @ \$2,737	02-02-91 02-02-01 02-02-11
HAWAII 0.432	173 Indus.	A & A Hawaii, Inc. 194 Wiwoole St. Hilo, Hawaii 96720	Waialake 2-2-60:17	55 years 02-01-71/01-31-26 @ \$2,257	02-01-91 02-01-06
HAWAII 0.411	174 Indus.	THY & Associates, Inc. 210 Makaala St. Hilo, Hawaii 96720	Waialake 2-2-60:16	40 years 02-01-71/01-31-11 @ \$8,106	02-01-96
HAWAII 0.816	175 Indus.	Bob's Fender Shop, Inc. (Agreement of Sale Vendor) Nelson and Clara C. Rego dba Steel Fabrication Hawaii (Agreement of Sale Vendee) 222 Makaala St. Hilo, Hawaii 96720	Waialake 2-2-60:14 & 15	55 years 02-01-71/01-31-26 @ \$2,775	02-01-91 02-01-06
HAWAII 1.435	176 Indus.	M. Sonomura Contracting Co., Inc. (Agreement of Sale Vendor) Pacific Macadamia Nut Corp. (Agreement of Sale Vendee) 240 Makaala St. Hilo, Hawaii 96720	Waialake 2-2-60:11	65 years 02-01-71/01-31-36 @ \$5,138	02-01-96 02-01-16
HAWAII 1.000	177 Indus.	Thomas N. and Mary Ann Mink P.O. Box 2679 Kamuela, Hawaii 96743	Kauaihao 6-1-06:12	55 years 07-23-71/07-23-26 @ \$7,971 effective 02-01-88	07-23-91: rent step up @ \$10,914 07-23-11
HAWAII 6.513	178 Indus.	Hokulua, Inc. P.O. Box 411 Paauhilo, Hawaii 96776	Kauaihao 6-1-06:06	55 years 05-01-72/04-30-27 @ \$15,040.35	05-01-92: rent step up 05-01-02 05-01-12

ISLE/ACR.	#/USE	NAME	LOCATION/TMK	TERMS	REOPENINGS
HAWAII 0.636	183 Indus.	Hicks Construction Co., Inc. 2331 South Beretania St. Honolulu, Hawaii 96826	Waiakae 2-2-60:43 & 44	55 years 12-12-74/12-11-29 @ \$7,200	12-12-94 12-12-09
HAWAII 9,370.000	184 Past.	Kahua Ranch, Limited 3140 Ualena St. Honolulu, Hawaii 96819	Kawaihae 6-1-01:02, 03 & 16	35 years 01-09-76/01-08-11 @ \$33,403.44	01-09-96 01-09-06
HAWAII 0.578	187 Indus.	H. Kono, Inc. dba HICO Moving & Storage Co. 144 Makaala St. Hilo, Hawaii 96720	Waiakae 2-2-60:24	30 years 08-23-76/08-22-06 @ \$11,730	08-23-96
HAWAII 0.517	188 Indus.	Taialoa Co., Inc. P.O. Box 182 Papaikou, Hawaii 96781	Waiakae 2-2-60:18	30 years 08-23-76/08-22-06 @ \$10,489	08-23-96
HAWAII 4.881	190 Indus.	M. Sonomura Contracting Co., Inc. P.O. Box 1452 Hilo, Hawaii 96720	Panacwa 2-1-25:88	30 years 11-12-76/11-11-06 @ \$29,200	11-12-96
HAWAII 0.524	195 Commer.	John C. Kekua, Jr. 158 Alohalani Dr. Hilo, Hawaii 96720	Keaukaha 2-1-23:157	25 years 07-15-77/07-14-02 @ \$10,300	07-15-92 07-15-97
HAWAII 181.077	198 Pub. Serv.	Fed. Aviation Admin. Western Pacific Region P.O. Box 50109 Honolulu, Hawaii 96850	Makuu 1-5-10:17 1-5-10:04(P) & 17	10 years 08-01-77/07-31-87 @ \$5,070	Expired July 31, 1987
HAWAII 5,290.000	199 Past.	Alfred J. Nobrigo P.O. Box 401 Kamuela, Hawaii 96743	Humuula 3-8-01:09	25 years 09-01-77/08-31-02 @ \$32,000	09-01-97
HAWAII 7,512.800	200 Past.	Richard Smart dba Parker Ranch P.O. Box 458 Kamuela, Hawaii 96743	Humuula 3-8-01:02	25 years 09-01-77/08-31-02 @ \$31,300	09-01-97
HAWAII 20,377.137	201 Past.	Richard Smart dba Parker Ranch P.O. Box 458 Kamuela, Hawaii 96743	Humuula 3-8-01:07	25 years 09-01-77/08-31-02 @ \$61,600	09-01-97
HAWAII 38,975	202 Commer.	Honolulu Federal Svcs. and Loan Ass'n. P.O. Box 539 Honolulu, Hawaii 96809	Panacwa 2-2-47:06 & 01(P)	53 years 10-01-77/09-30-30 @ \$173,250 to 09-30-90 + percentage rent of 9% of gross rental collected in excess of net annual base lease rent	10-01-90 30% step up 10-01-00 30% step up 10-01-10 10-01-20
HAWAII 2.000	204 Indus.	Shuman Lumber Co. of Hilo, Inc. 60 Kesa St. Hilo, Hawaii 96720	Kawaihae 6-1-06:08	30 years 05-05-78/05-04-08 @ \$13,420	05-05-98
HAWAII 2.000	205 Indus.	Kawaihae Millwork, Inc. P.O. Box 4950 Kamuela, Hawaii 96743	Kawaihae 6-1-06:13	30 years 05-05-78/05-04-08 @ \$13,420	05-05-98
HAWAII 2.588	206 Indus.	Boyd Enterprises, Inc. P.O. Box 2537 Kailua-Kona, Hawaii 96745-2537	Kawaihae 6-1-06:14	30 years 05-05-78/05-04-08 @ \$14,455	05-05-98
HAWAII 1.134	207 Indus.	South Pacific Ship & Chandlery, Ltd. P.O. Box 1226 Kailua-Kona, Hawaii 96745-1226	Kawaihae 6-1-06:16	30 years 05-05-78/05-04-08 @ \$3,000	05-05-88 05-05-98
HAWAII 0.579	208 Indus.	Eagle Distributors, Inc. 99-877 Iwena St. Aiea, Hawaii 96701	Waiakae 2-2-60:22	30 years 06-02-78/06-01-08 @ \$12,350	06-02-98
HAWAII 0.000	213 Pub. Serv.	Department of Transportation 869 Punchbowl Street Honolulu, Hawaii 96814	South Point, Ka'u Kamoa-Puuco 9-3-01:03(P)	55 years 10-03-83/10-02-38 \$50,000 for 1st 15 yrs. or minimum of \$50,000 worth of in-kind improvements	10-03-98 10-03-13 10-03-28

ISLE/ACR	#/USE	NAME	LOCATION/TMK	TERMS	REOPENINGS
HAWAII 2,850	217 Indus.	Kawaihae Industrial Development Corp. 1646-A Kona St. Honolulu, Hawaii 96814	Kawaihae 6-1-06:15	40 years 06-01-84/05-31-24 @ \$8,700	06-01-94 06-01-04 06-01-14
HAWAII 0.465	218 Indus.	James L.K. Tom P.O. Box 30408 Honolulu, Hawaii 96820	Waialea 2-2-60:29	42 years 12-01-85/11-30-27 @ \$13,368	12-01-97 12-01-07 12-01-17
HAWAII 2,120	219 Indus.	James L.K. Tom P.O. Box 30408 Honolulu, Hawaii 96820	Kawaihae 6-1-06:05	42 years 12-01-85/11-30-27 @ \$13,368	12-01-97 12-01-07 12-01-17
HAWAII 0.579	220 Indus.	Fair Contracting Co., Ltd. 133 Makaala St. Hilo, Hawaii 96720	Waialea 2-2-60:26	42 years 07-01-87/06-30-29 @ \$11,113	07-01-00 25% step up 13th thru 22nd year @ \$13,891.25 07-01-09 07-01-19
HAWAII 6,584	S-3887 Utility	Hilo Electric Light Co., Ltd. P.O. Box 1027 Hilo, Hawaii 96721-1027	Humuula 3-8-01:12(P) & 15(P)	30 years 01-20-65/01-19-95 @ \$360 from 01-20-85 thru 01-19-95	
KAUAI 302,370	104 Agri.	Olaf E. Thronas P.O. Box 269 Lawai, Hawaii 96765	Moloka 4-9-10:02 & 05	35 years 05-01-66/04-30-01 @ \$3,500	05-01-91
KAUAI 0.610	S-3679 Residence	William K. Lemm P.O. Box 82 Anahola, Hawaii 96703	Anahola 4-8-08:32	30 years 12-18-61/12-17-91 @ \$1,900 from 12-18-76 thru 12-17-91	
MAUI 15,620,000	101 Past.	Maul Factors, Inc. c/o Ms. Annette Niles P.O. Box 243 Kula, Hawaii 96790	Kahikinui 1-9-01:03 & 07(P)	25 years 04-01-67/03-31-92 @ \$40,550	
MAUI 5,057,000	133 Past.	James C. and Jane Sakugawa RR#1, Box 650 Kula, Hawaii 96790	Kula 2-2-02:14 2-2-04:36	25 years 11-01-68/10-31-93 @ \$17,696	
MAUI 0.072	191 Utility	GASCO P.O. Box 3379 Honolulu, Hawaii 96842	Paukukalo 3-3-05:03(P)	25 years 06-01-76/05-31-01 @ \$620	06-01-90
MOLOKAI 139,831	149 Agri.	Molokai Ranch, Ltd. P.O. Box 4039 Honolulu, Hawaii 96812	Hoolehua/Palaau 5-2-11:16, 17, 18 & 19	25 years 09-01-69/08-31-94 @ \$6,167	
MOLOKAI 29,660	179 Agri.	G. Hlenie N. and Harriette M. Davis P.O. Box 52 Kaunakakai, Hawaii 96748	Hoolehua 5-2-02:55	25 years 06-01-72/05-31-97 @ \$1,450	06-01-92
MOLOKAI 39,875	182 Agri.	Heine and Becky Mokuau P.O. Box 87 Hoolehua, Hawaii 96729	Hoolehua/Palaau 5-2-26:08	25 years 08-01-73/07-31-98 @ \$400	08-01-88 08-01-93
MOLOKAI 149,100	185 Agri.	Na Hua Ai Farms P.O. Box 165 Hoolehua, Hawaii 96729	Hoolehua/Palaau 5-2-01:05	25 years 06-14-76/06-13-01 @ \$6,000	06-14-96
MOLOKAI 1,000	196 Pub. Serv.	U.S. Postal Service Western Region San Bruno, California 94099	Hoolehua/Palaau 5-2-23:02	25 years 07-01-77/06-30-02 @ \$1,100	07-01-97
MOLOKAI 363,673	203 Pub. Serv.	WSMC/PMI c/o H.R. Mattison Vandenberg Air Force Base, California 93437	Hoolehua/Palaau 5-2-06:63	10 years 01-01-78/12-31-87 @ \$17,460	
OAHU 443,700	103 Past.	Walanae Valley Farm, Ltd. c/o Henry Raposa, Sr. P.O. Box 2352 Walanae, Hawaii 96792	Nanakuli 8-9-07:02	25 years 02-01-66/01-31-91 @ \$2,022.60	
OAHU 1,126,000	105 Past.	Tongg Ranch, Inc. 169 S. Kukui St. Honolulu, Hawaii 96813-2389	Nanakuli 8-9-08:03, 06 & 07	25 years 04-01-66/03-31-91 @ \$6,502.50	

ISLE/ACR.	#/USE	NAME	LOCATION/TMK	TERMS	REOPENINGS
OAHU 37.452	107 Past.	Gertrude K. Toledo P.O. Box 717 Waiānae, Hawaii 96792	Lualualei 8-6-03:03(P)	25 years 07-01-70/06-30-95 @ \$1,120	
OAHU 4.176	111 Dairy	Ernest M. Souza c/o Mrs. Bernie Rzonca 86-136 Kakalapola St. Waiānae, Hawaii 96792	Lualualei 8-6-03:01	25 years 01-01-69/12-31-93 @ \$5,009	
OAHU 0.212	114 Utility	GTE Hawaiian Telephone Co., Inc. P.O. Box 2200 Honolulu, Hawaii 96801	Nanakuli 8-9-05:84	65 years 05-01-67/04-30-32 @ \$950	05-01-92
OAHU 0.265	134 Utility	GTE Hawaiian Telephone Co., Inc. P.O. Box 2200 Honolulu, Hawaii 96801	Waimanalo 4-1-21:31	65 years 06-01-68/05-31-33 @ \$1,045.80	06-01-93 06-01-13
OAHU 69.990	153 Dairy	George Freitas Dairy, Inc. 98-1264 Akaka St. Aiea, Hawaii 96701-3043	Waiānae 8-5-04:01 & 58	20 years 02-01-70/01-31-90 @ \$5,086	
OAHU 114.887	181 Past.	Fred Teixeira 6154-A May Way Honolulu, Hawaii 96821	Waimanalo 4-1-14:07 & 12 4-1-17:21 4-1-02:01	25 years 09-28-72/09-27-97 @ \$3,200	09-28-92
OAHU 2.670	194 Pub. Serv.	C & C of Honolulu, D.P.W. 650 South King St. Honolulu, Hawaii 96813	Lualualei 8-6-01:22	25 years 07-01-77/06-30-02 @ \$33,488	07-01-97
OAHU 2.619	221 Pub Serv.	Waiānae Dist. Comprehensive Health and Hospital Board, Inc. dba Waiānae Coast Comprehensive Health Center 86-260 Farrington Highway Waiānae, Hawaii 96792	Lualualei 8-6-01:40, 41 & 46	40 years 01-01-88/12-31-27 @ \$45,198 Graduated lease rent payment schedule in effect 1st 10 years	01-01-98 01-01-08 01-01-18
OAHU 0.645	S-3897 Utility	Hawaiian Electric Co., Inc. P.O. Box 2750 Honolulu, Hawaii 96803	Nanakuli 8-9-07:01(P) & 02(P)	65 years 03-11-65/03-10-30 @ \$84	03-11-95 03-11-10
OAHU 0.676	S-4113 Indus.	U-Haul of Hawaii, Inc. 2722 Kilihau St. Honolulu, Hawaii 96819	Honolulu 1-1-64:08	40 years 10-10-67/10-09-07 @ \$73,234.20	10-10-97
OAHU 0.909	S-4114 Indus.	Axel F. Petterson and Joydeanne B. Petterson (Agreement of Sale Vendor) 7221 Soundview Drive, #204 Gig Harbor, Washington 98335 Patrick H. Mather et al (Agreement of Sale Vendee) 638 Kakoi St. Honolulu, Hawaii 96819	Honolulu 1-1-64:09	40 years 10-10-67/10-09-07 @ \$90,344.40	10-10-97
OAHU 0.946	S-4115 Indus.	G.W. Murphy Construction Co., Inc. 650 Kakoi St. Honolulu, Hawaii 96819	Honolulu 1-1-64:10	40 years 10-10-67/10-09-07 @ \$92,542.80	10-10-97
OAHU 1.010	S-4116 Indus.	Hawaii Industrial Partners #1 747-1D Sheridan Blvd. Lakewood, Colorado 80214	Honolulu 1-1-64:11	40 years 10-10-67/10-09-07 @ \$99,600	10-10-97
OAHU 1.010	S-4117 Indus.	Shafter Land Corporation P.O. Box 2114 Honolulu, Hawaii 96805	Honolulu 1-1-64:12	40 years 10-10-67/10-09-07 @ \$99,600	10-10-97
OAHU 1.010	S-4118 Indus.	Intercontinental Industries, Inc. 710 Kakoi St. Honolulu, Hawaii 96819	Honolulu 1-1-64:13	40 years 10-10-67/10-09-07 @ \$99,600	10-10-97
OAHU 1.094	S-4119 Indus.	Burt T. Kaminaka, Miriam K. Kaminaka and Kurt K. Kaminaka 47-259 Milomio Loop Kaneohe, Hawaii 96744	Honolulu 1-1-64:14	40 years 10-10-67/10-09-07 @ \$110,564.24	10-10-97

ISLE/ACR.	#/USE	NAME	LOCATION/TMK	TERMS	REOPENINGS
OAHU 0.918	S-4120 Indus.	Electrical Distributors, Ltd. 689 Kaka'i St. Honolulu, Hawaii 96819	Honolulu 1-1-64:15	40 years 10-10-67/10-09-07 @ \$96,000	10-10-97
OAHU 0.918	S-4121 Indus.	Equipment Service Company, Ltd. dba F.K.S. Rental and Sales 653 Kaka'i St. Honolulu, Hawaii 96819	Honolulu 1-1-64:16	40 years 10-10-67/10-09-07 @ \$96,000	10-10-97
OAHU 0.507	S-4122 Indus.	Equipment Service Company, Ltd. dba F.K.S. Rental and Sales 653 Kaka'i St. Honolulu, Hawaii 96819	Honolulu 1-1-64:17	40 years 10-10-67/10-09-07 @ \$58,333.44	10-10-97
OAHU 0.566	S-4123 Indus.	Douglas Takata 2706 Kilihau St. Honolulu, Hawaii 96819	Honolulu 1-1-64:18	40 years 10-10-67/10-09-07 @ \$65,537.08	10-10-97
OAHU 0.574	S-4124 Indus.	Sen Plex Corporation P.O. Box 2114 Honolulu, Hawaii 96805	Honolulu 1-1-64:19	40 years 10-10-67/10-09-07 @ \$64,500	10-10-97
OAHU 0.574	S-4125 Indus.	Oahu Development Corporation P.O. Box 2114 Honolulu, Hawaii 96805	Honolulu 1-1-64:20	40 years 10-10-67/10-09-07 @ \$64,500	10-10-97
OAHU 0.574	S-4126 Indus.	Rovens/Tanaka Contractors, Inc. 2678 Kilihau St. Honolulu, Hawaii 96819	Honolulu 1-1-64:21	40 years 10-10-67/10-09-07 @ \$64,500	10-10-97
OAHU 0.574	S-4127 Indus.	Maurice F. Stanton and Marlynn W. Stanton dba Alii Stor-Mor Self-Storage Center 2670 Kilihau St. Honolulu, Hawaii 96819	Honolulu 1-1-64:22	40 years 10-10-67/10-09-07 @ \$13,000	10-10-87 10-10-97
OAHU 0.232	S-4290 Indus.	Albert C. Kobayashi, Inc. (Agreement of Sale Vendor) 94-535 Ukee St. Waipahu, Hawaii 96797 Pacific Diving Industries (Agreement of Sale Vendee) 2646 Kilihau St. Honolulu, Hawaii 96819	Honolulu 1-1-64:34	40 years 03-12-70/03-11-10 @ \$7,200	03-12-90 03-12-00
OAHU 0.233	S-4291 Indus.	Bert A. Kobayashi (Agreement of Sale Vendor) 94-535 Ukee St. Waipahu, Hawaii 96797 CLU Investment (Agreement of Sale Vendee) 2632 Kilihau St. Honolulu, Hawaii 96819	Honolulu 1-1-64:35	40 years 03-12-70/03-11-10 @ \$7,500	03-12-90 03-12-00
OAHU 0.527	S-4292 Indus.	Home Communications Services Corporation 2669 Kilihau St. Honolulu, Hawaii 96819	Honolulu 1-1-64:33	40 years 03-12-70/03-11-10 @ \$16,700	03-12-90 03-12-00
OAHU 0.492	S-4293 Indus.	Rite-Way Electric Co., Ltd. (50% interest) Quality Pacific, Ltd. (50% interest) 2645-B Kilihau St. Honolulu, Hawaii 96819	Honolulu 1-1-64:32	40 years 03-12-70/03-11-10 @ \$15,900	03-12-90 03-12-00
OAHU 0.477	S-4294 Indus.	Hawaii Business Associates, Inc. 2627 Kilihau St. Honolulu, Hawaii 96819	Honolulu 1-1-64:31	40 years 03-12-70/03-11-10 @ \$16,200	03-12-90 03-12-00

Appendix SUBLEASES

LESSEE	AREA	ANNUAL BASE LEASE RENT	SUBLESSEE	AREA	RENT	DATE OF CONSENT
Akana Petroleum, Inc. #102	9.699 Acres	\$44,000	RAK Repair	2,300 sq. ft.	\$682.00 mo.	12/20/85
			RAK Repair	1,152 sq. ft.	\$365.33 mo.	08/25/87
			RAK Repair	198 sq. ft.	\$62.79 mo.	08/25/87
			Industrial Recapping	4,000 sq. ft.	\$1,200.00 mo.	12/20/85
			Hawaii Forklift Services	360 sq. ft.	\$117.17 mo.	10/27/87
			Open Area			
			Polynesian Hospitality Tours	23,000 sq. ft.	\$335.95 mo.	08/25/87
			Greg's Contractor Services	368 sq. ft.	\$17.75 mo.	10/27/87
			Kalawe Trucking, Inc.	416 sq. ft.	\$20.10 mo.	10/27/87
			P. Lawrence Contracting	4,000 sq. ft.	\$190.00 mo.	10/27/87
Tongg Ranch, Inc. #105	1,126.000 Acres	\$6,502.50	Shima's Hauling	368 sq. ft.	\$17.75 mo.	10/27/87
			Hilo Wood Treating, Inc.	21,780 sq. ft.	\$432.00 mo.	06/28/88
Hawaii Anthurium Growers Cooperative #109	1.245 Acres	\$5,206.20	Edward N. Kelikoa	1,527.920 Acres	\$541.87 mo.	02/23/88
			In Soon Kim and Byung Soo Kim	7,050 sq. ft.	\$676.50 mo.	11/09/76
George R. Madden, Jr. #113	1.085 Acres	\$6,976	ABC Interiors	3,932 sq. ft.	\$784.26 mo.	—
			Big Island Tire Service	3,600 sq. ft.	\$846.12 mo.	—
			DL Downing Gen'l. Contr.	288 sq. ft.	\$149.62 mo.	—
			Skeele Construction	1,607 sq. ft.	\$355.35 mo.	—
Oshiro Contractor, Inc. #127	0.620 Acre	\$1,754	Tom Moore Tax Service, Inc.	600 sq. ft.	\$300.00 mo.	—
			Data, Inc.	500 sq. ft.	\$135.00 mo.	03/01/79
			Raymond Shimizu	200 sq. ft.	\$100.00 mo.	03/01/79
			Moore Business Forms	500 sq. ft.	\$180.00 mo.	—
			Cabinets by Steve	2,300 sq. ft.	\$320.00 mo.	03/01/79
			Ameritone Hawaii	600 sq. ft.	\$245.00 mo.	03/01/79
			Natural Pacific	2,800 sq. ft.	\$700.00 mo.	—
A & A Hawaii, Inc. #140	0.742 Acre	\$3,102	Hardware Hawaii	7,500 sq. ft.	\$1,425.00 mo.	—
			Marukai, Corp.	7,500 sq. ft.	\$1,575.00 mo.	—
M. Sonomura Contracting Co., Inc. #143	4.880 Acres	\$7,527	Ono-Pac Corp.	12,000 sq. ft.	\$2,000.00 mo.	—
			Linz's Lumber Supply	8,000 sq. ft.	\$1,750.00 mo.	09/27/85
George R. Madden, Jr. #146	0.930 Acre	\$4,082	All Purpose Maintenance	792 sq. ft.	\$249.18 mo.	—
			Keehne's Electric, Inc.	500 sq. ft.	\$205.90 mo.	—
			PCI Chem-Corp	2,640 sq. ft.	\$631.67 mo.	—
			Power Train Industries	2,525 sq. ft.	\$863.83 mo.	—
			Precision Auto Machine	2,112 sq. ft.	\$597.26 mo.	—
			TI Service	1,320 sq. ft.	\$395.33 mo.	03/01/79
Molokai Ranch, Ltd. #149	139.831 Acres	\$6,167	Hawaiian Research	139.831 Acres	\$513.92 mo.	—
Laupahoehoe Transportation Co., Inc. #156	10.000 Acres	\$16,400	Big Island Car Wash	2,982.85 sq. ft.	\$450.00 mo.	01/27/78
			Occidental Chemical Co.	15,000 sq. ft.	\$2,250.00 mo.	10/01/79
			Hawaiian Host, Inc.	134,731 sq. ft.	\$2,020.97 mo.	11/19/79
M. Sonomura Contracting Co., Inc. #158	0.930 Acre	\$4,203.90	Doug's Auto Machine	4,750 sq. ft.	\$750.00 mo.	03/01/79
			Alejandro's Repair	1,250 sq. ft.	\$400.00 mo.	09/22/87
			W.A. Hiral & Assoc.	3,750 sq. ft.	\$750.00 mo.	03/01/79
			The Muffler Shop, Inc.	2,500 sq. ft.	\$750.00 mo.	09/22/87
			Custom Sheet Metal, Inc.	2,550 sq. ft.	\$765.00 mo.	09/22/87
Jiro Tanaka #160	0.465 Acre	\$9,228	Gerald L. Moulton Yukon Office Supply of Hawaii, Inc.	5,670 sq. ft.	\$844.00 mo.	05/24/88
Tataloha Co., Inc. #161	0.930 Acre	\$4,860		7,344 sq. ft.	\$2,101.88 mo.	06/08/81
			Univ. of Hawaii Inst. of Astronomy Nick's Garage	10,710 sq. ft.	\$1,500.00 mo.	09/11/81
Holomua Street Partners #163	0.930 Acre	\$4,860		5,000 sq. ft.	\$1,100.00 mo.	—
Mrs. Richard S.P. Lam #170	2.337 Acres	9,445	Familian Northwest, Inc.	23,625 sq. ft.	\$1,850.00 mo.	12/20/85
Sidney Lee #170	0.465 Acre	\$9,228	Boise Cascade Corp.	0.233 Acre	\$2,107.08 mo.	08/27/71
A & A Hawaii, Inc. #171	0.370 Acre	\$2,322	I'ECIA-IBEW	—	\$120.00 mo.	—
#173	0.432 Acre	\$2,257	Stan's Auto Body Repair	3,600 sq. ft.	\$792.00 mo.	—
			Economy Printers	1,800 sq. ft.	\$396.00 mo.	—
			Allied Machinery Corp.	7,500 sq. ft.	\$975.00 mo.	—

LESSEE	AREA	ANNUAL BASE LEASE RENT	SUBLESSEE	AREA	RENT	DATE OF CONSENT
Nelson & Clara Rego #175	1.195 Acres	\$2,775	Big Island Candies, Inc.	3,500 sq. ft.	\$735.00 mo.	07/29/77
Hicks Construction Co., Inc. #183	0.636 Acre	\$7,200	JK Electric, Inc.	2,072 sq. ft.	\$660.00 mo.	12/10/84
Kahua Ranch, Limited #184	9,370.000 Acres	\$33,403.44	Hoepaa, Inc.	8,176.000 Acres	\$21,044.00 per ann. approx.	08/10/76
Talaloa Co., Inc. #188	0.517 Acre	\$10,489	Berts Auto Painting American Vending & Amusement Hawaii	3,500 sq. ft. 8,600 sq. ft.	\$875.00 mo. \$1,100.00 mo.	03/01/79
Honolulu Federal Svcs. and Loan Ass'n. #202	38.975 Acres	\$173,250	Various			
South Pacific Ship & Chandlery, Ltd. #207	1.134 Acres	\$3,000	Bragado Trucking	4,000 sq. ft.	\$1,800.00 mo.	01/30/87

Appendix LICENSES

License Summary by Island

	HAWAII	KAUAI	MAUI	MOLOKAI	OAHU	TOTAL
Number	54	7	7	27	60	155
Acreage	112	7	6	824	69	1,018
DHHL Annual Income	\$1,928	\$3	\$1,079	\$3,746	\$113,575	\$120,331

NOTE: Church licenses are included in above figures.

License Summary by Use

USE	NO.	ACREAGE	DHHL ANNUAL INCOME
Aviation	1	0	\$0
Cemetery	1	1	0
Churches	20	25	5,481
Community Centers	4	4	3
Easements	105	48	2,114
Game Management	1	523	0
Parks	9	265	5
Public Service	8	21	3,545
Quarries	2	51	109,183
Reservoirs	2	56	0
School	1	24	0
Water Purchase	1	0	0
TOTAL	155	1,018	\$120,331

Church License Summary

	HAWAII	KAUAI	MAUI	MOLOKAI	OAHU	TOTAL
Number	5	0	0	11	4	20
Acreage	4	0	0	17	4	25
DHHL Annual Income	\$919	\$0	\$0	\$3,739	\$823	\$5,481

Church Licenses

ISLE/AREA	NO.	LICENSEE	LOCATION/TMK	TERMS
HAWAII 1.000	074	Haili Congregational Church P.O. Box 1332 Hilo, Hawaii 96720	Walakea 2-1-20:07	21 Years 01-01-78/12-31-98 ● \$217.80
HAWAII 1.000	075	St. Mary, Gate of Heaven Catholic Church 326 Deaha Lane Hilo, Hawaii 96720	Walakea 2-1-21:14	21 Years 01-01-78/12-31-98 ● \$217.80
HAWAII 0.500	076	Kauhane Hemolele Oka Malamalama 316 King Avenue Hilo, Hawaii 96720	Walakea 2-1-23:85	21 Years 01-01-78/12-31-98 ● \$108.90
HAWAII 1.220	089	Church of Jesus Christ of Latter Day Saints 226 Pua Street Hilo, Hawaii 96720	Walakea 2-1-20:73	21 Years 07-01-78/06-30-99 ● \$265.72
HAWAII 0.500	090	Ka Iloku Ao Malamalama Church P.O. Box 10454 Hilo, Hawaii 96721-5454	Walakea 2-1-23:62	21 Years 07-01-78/06-30-99 ● \$108.90
MOLOKAI 2.489	070	Kalalakamau Hou Congregational Church P.O. Box 606 Kaunakakai, Hawaii 96748	Kalamaula 5-2-09:13	21 Years 01-01-78/12-31-98 ● \$542.10

ISLE/AREA	NO.	LICENSEE	LOCATION/TMK	TERMS
MOLOKAI 0.344	071	Ierusalem Pomaikai Church P.O. Box 512 Kaunakakai, Hawaii 96748	Kalamaula 5-2-09:27	21 Years 01-01-78/12-31-98 @ \$75.14
MOLOKAI 0.546	078	Watch Tower Bible & Tract Society P.O. Box 33 Kaunakakai, Hawaii 96748	Kalamaula 5-2-09:20	21 Years 07-01-78/06-30-99 @ \$118.92
MOLOKAI 1.518	079	Molokai Church of God c/o Mrs. Nadine Sanchez P. O. Box 130 Kualapuu, Hawaii 96757	Kalamaula 5-2-09:22	21 Years 07-01-78/06-30-99 @ \$330.62
MOLOKAI 0.588	081	Ka Hale La'a O Ierusalem Hou Church P.O. Box 116 Kaunakakai, Hawaii 96748	Kalamaula 5-2-09:24 & 25	21 Years 07-01-78/06-30-99 @ \$128.06
MOLOKAI 3.222	082	Church of Jesus Christ of Latter Day Saints P.O. Box 44 Kaunakakai, Hawaii 96748	Kalamaula 5-2-09:29	21 Years 07-01-78/06-30-99 @ \$701.75
MOLOKAI 0.850	083	Sacred Hearts Catholic Church P.O. Box 238 Hoolehua, Hawaii 96729	Hoolehua/Palaau 5-2-07:46	21 Years 07-01-78/06-30-99 @ \$185.13
MOLOKAI 1.600	084	Hoolehua Congregational Church United Church of Christ P. O. Box 196 Hoolehua, Hawaii 96729	Hoolehua/Palaau 5-2-15:45	21 Years 07-01-78/06-30-99 @ \$348.48
MOLOKAI 0.899	085	The Episcopal Church in Hawaii Queen Emma Square Honolulu, Hawaii 96813	Hoolehua/Palaau 5-2-15:47 & 32(7)	21 Years 07-01-78/06-30-99 @ \$195.80
MOLOKAI 4.190	181	Molokai Baptist Church P.O. Box 87 Maunaloa, Hawaii 96770	Hoolehua 5-2-23:07	21 Years 07-01-84/06-30-05 @ \$912.58
MOLOKAI 0.805	209	The Lamb of God Church and Bible School 612 Isenberg Street Honolulu, Hawaii 96826	Kalamaula 5-2-09:24	21 Years 05-01-86/04-30-07 @ \$200
OAHU 1.490	073	Nanakuli Door of Faith Church 89-142 Haleakala Avenue Waianae, Hawaii 96792	Nanakuli 8-9-02:44	21 Years 01-01-78/12-31-98 @ \$324.52
OAHU 0.420	086	Church of Jesus Christ of Latter Day Saints c/o Myron W. Hatch 1500 South Beretania Street Honolulu, Hawaii 96826	Waimanalo 4-1-21:22 Parking lot only	21 Years 07-01-78/06-30-99 @ \$91.48
OAHU 0.860	087	St. Rita's Catholic Church 89-318 Farrington Highway Waianae, Hawaii 96792	Nanakuli 8-9-05:01	21 Years 07-01-78/06-30-99 @ \$187.30
OAHU 1.010	088	Nanaikepono Protestant Church 89-235 Pua Avenue Waianae, Hawaii 96792	Nanakuli 8-9-05:17	21 Years 07-01-78/06-30-99 @ \$219.98

Licenses

ISLE/ACR.	#/USE	LICENSEE/ADDRESS	LOCATION/TMK	TERMS	REMARKS
HAWAII	001 Avigation Agreement	State of Hawaii Dept. of Defense Hawaii Air National Guard 3949 Diamond Head Road Honolulu, Hawaii 96816-4495	Waiakea 2-1-13:01 (P)	4 yrs. 7 mos. 06-01-88/12-31-92 \$25 per training flight	Air rights for helicopter training flights
HAWAII 6.641	006 Park	County of Hawaii 25 Aupuni Street Hilo, Hawaii 96720	Panaewa 2-2-59:11	21 years 10-14-75 (Pend.)/10-13-96 @ \$1	Panaewa Park
HAWAII	023 Easement	Dept. of Water Supply 25 Aupuni Street Hilo, Hawaii 96720	Waiakea 2-2-60:09(P) & 15(P)	21 years 04-06-73/04-05-94 @ \$1	Water pipelines 10 ft. wide
HAWAII	025 Easement	HELCO & H-TEL P.O. Box 1027 Hilo, Hawaii 96721-1027	Panaewa 2-1-13:98(P)	21 years 08-07-69/08-06-90 \$1 for term	Utility
HAWAII	026 Easement	Hawaiian Telephone Co. P.O. Box 2200 Honolulu, Hawaii 96805	Pauahi 6-2-01:12(P)	21 years 11-17-69/11-16-90 \$1 for term	Right-of-Way poles and lines
HAWAII 0.218	027 Easement	Dept. of Water Supply 25 Aupuni Street Hilo, Hawaii 96720	Waimae/Puukapu 6-4-03:69(P)	21 years 02-12-74/02-11-95 \$1 for term	20,000-gallon water tank site
HAWAII 4.807	044 Park	County of Hawaii 25 Aupuni Street Hilo, Hawaii 96720	Keaukaha 2-1-23:120	21 years 08-03-76/08-02-97 @ \$1	Hualani Park Kawananakoa Hall
HAWAII	060 Easement	Dept. of Water Supply 25 Aupuni Street Hilo, Hawaii 96720	Waiakea 2-1-13:03(P) & 12(P) 2-1-25	Perpetual or termina- tion of use 01-05-78 Gratis	Water service line to dragstrip and rec. complex as well as DHHL Panaewa farm lots
HAWAII	092 Easement	Dept. of Public Works 25 Aupuni Street Hilo, Hawaii 96720	Panaewa 2-2-47:01(P)	Perpetual or termina- tion of use 03-09-78 Gratis	Drain Easement
HAWAII	095 Easement	Hawaii Electric Light Co., Inc. P.O. Box 1027 Hilo, Hawaii 96721-1027	Kawaihae 6-1-01:03(P) & 16(P) 5-1-05:08(P) 6-1-06:10(P) & 11(P)	21 years 02-28-74/02-27-95 \$21 for term	Poles & powerlines
HAWAII	098 Easement	Hawaii Electric Light Co., Inc. P.O. Box 1027 Hilo, Hawaii 96721-1027	Kawaihae 6-2-01:12(P)	21 years 01-26-78/01-25-99 \$21 for term	Poles and powerlines
HAWAII	099 Easement	Dept. of Water Supply 25 Aupuni Street Hilo, Hawaii 96720	Kamoku/Kapulena 4-7-07:05(P) & 25	21 years 12-16-77/12-15-98 @ \$1	Waterline Easement
HAWAII	102 Easement	Dept. of Water Supply 25 Aupuni Street Hilo, Hawaii 96720	Panaewa 2-1-25:89	Perpetual or termina- tion of use Gratis	Waterline Easement
HAWAII 0.014	111 Park	Big Island Resource & Development Council P.O. Box 915 Hilo, Hawaii 96720	Kamaea/Puueo 9-3-01:03(P)	21 years 01-26-79/01-25-00 @ \$1	National Historic Plaque Marker Site
HAWAII 0.055	113 Easement	Hawaiian Telephone Co. P.O. Box 2200 Honolulu, Hawaii 96805	Pauahi 6-2-01:04(P)	21 years 10-01-79/09-30-00 \$21 for term	Poles, lines, anchors
HAWAII 4.835	117 Easement	Hawaii Electric Light Co., Inc. P.O. Box 1027 Hilo, Hawaii 96721-1027	Pauahi/Kawaihae 6-1-01:02(P) & 03(P) 6-2-01:12(P)	21 years 12-01-79/11-30-00 \$5.05 for term	Poles and powerlines

ISLE/ACR	#/USE	LICENSEE/ADDRESS	LOCATION/TMK	TERMS	REMARKS
HAWAII	118 Easement	Hawaii Electric Light Co., Inc. P.O. Box 1027 Hilo, Hawaii 96721-1027	Keaukaha 2-1-23:110(P)	21 years 10-01-79/10-31-00 \$21 for term	Poles and powerlines
HAWAII 1435	127 Easement	Dept. of Water Supply 25 Aupuni Street Hilo, Hawaii 96720	Nienie 4-6-12:04(P)	21 years 05-01-81/04-30-02 @ \$1	Waterline
HAWAII 13209	130 Easement	HELCO & H-TEL P.O. Box 1027 Hilo, Hawaii 96721-1027	Kamoku 6-4-03:Various (P) 4-7-07:Various (P)	21 years 05-01-82/04-30-03 \$21 for term	Utility
HAWAII	134 Easement	Dept. of Water Supply 25 Aupuni Street Hilo, Hawaii 96720	Waima/Puukapu 6-4-04:Various (P)	21 years 07-30-81/07-29-02 \$21 for term	Waterline
HAWAII	139 Easement	County of Hawaii Water Commission 25 Aupuni Street Hilo, Hawaii 96720	Panaewa 2-1-13:03, 12 to 141 & 152 2-2-47:07 to 57	Perpetual 06-22-87 \$1 for term	Waterlines
HAWAII 0905	142 Easement	W.H. Shipman, Ltd. P.O. Box 950 Keaau, Hawaii 96749	Humuula 3-8-01:02(P)	Perpetual w/ reversionary clause 07-01-82 \$3,000 paid for term in '82	Road
Partial assignment of easement to U.S. Fish & Wildlife Service					
HAWAII	143 Easement	Mrs. Javer Bowden 1717 Railroad Avenue Hilo, Hawaii 96720	Panaewa 2-1-25:122(P) & 123(P)	5 years 05-01-87/04-30-92 \$1 for term	Waterline
HAWAII	153 Easement	Dept. of Water Supply 25 Aupuni Street Hilo, Hawaii 96720	Puukapu 6-4-04:03(P) & 14(P)	21 years 05-01-81/04-30-02 @ \$1	Waterline
HAWAII	156 Easement	Parker Ranch P.O. Box 458 Kamuela, Hawaii 96743	Waima/Puukapu 6-5-01:17(P)	21 years 03-31-83/03-30-04 \$630 paid for term in '83	Waterline
HAWAII	158 Easement	HELCO & H-TEL P.O. Box 1027 Hilo, Hawaii 96721-1027	Panaewa 2-1-25:52(P)	Perpetual 04-01-83/03-31-04 \$1 for term	Utility
HAWAII 54.000	159 Reservoir	DLNR - DOWALD 1151 Punchbowl Street Honolulu, Hawaii 96813	Waima/Puukapu 6-4-03:15(P)	21 years 02-24-83/02-23-04 \$21 for term	Reservoir
HAWAII	160 Easement	HELCO & H-TEL P.O. Box 1027 Hilo, Hawaii 96721-1027	Keaukaha 2-1-20, 21, 22, 23	Perpetual 02-24-83 \$1 for term	Utility
HAWAII	161 Easement	Hawaiian Telephone Co. P.O. Box 2200 Honolulu, Hawaii 96805	Humuula 3-8-01:07(P) & 12(P)	21 years 01-26-83/01-25-04 \$1,050 paid for term in '83	Utility Radio-Tel. relay
HAWAII	162 Easement	HELCO & H-TEL P.O. Box 1027 Hilo, Hawaii 96721-1027	Panaewa 2-1-25:95(P) & 96(P)	Perpetual 06-01-83 \$1 for term	Utility
HAWAII	163 Easement	HELCO P.O. Box 1027 Hilo, Hawaii 96721-1027	Kawaihae 6-1-02:72(P) 77(P), 83(P)	Perpetual 05-01-83 \$21 for term	Utility
HAWAII	168 Easement	Dept. of Water Supply 25 Aupuni Street Hilo, Hawaii 96720	Waiakea 2-1-23 2-1-24	21 years 11-01-83/10-31-04 \$1 for term	Waterline
HAWAII	169 Easement	Dept. of Water Supply 25 Aupuni Street Hilo, Hawaii 96720	Waiakea 2-1-23 2-1-24	21 years 11-01-83/10-31-04 \$1 for term	Drainage

ISLE/ACR.	#/USE	LICENSEE/ADDRESS	LOCATION/TMK	TERMS	REMARKS
HAWAII	175 Easement	HELCO & H-TEL P.O. Box 1027 Hilo, Hawaii 96721-1027	Panaewa 2-2-47:01(P) & 06(P)	Perpetual 04-01-84/03-31-05 \$1 for term	Utility
HAWAII	176 Easement	HELCO P.O. Box 1027 Hilo, Hawaii 96721-1027	Puukapu 6-4-03:15(P) & 97(P)	Perpetual 05-01-84/04-30-05 \$1 for term	Utility
HAWAII	177 Easement	HELCO & H-TEL P.O. Box 1027 Hilo, Hawaii 96721-1027	Puukapu 6-4-01:59	Perpetual 05-01-84/04-30-05 \$1 for term	Utility
HAWAII	179 Easement	HELCO & H-TEL P.O. Box 1027 Hilo, Hawaii 96721-1027	Waialae 2-1-13:08(P)	Perpetual 05-01-84/04-30-05 \$1 for term	Utility
HAWAII	182-A & B Easement	Hawaiian Telephone Co. P.O. Box 2200 Honolulu, Hawaii 96805	Humuula 3-8-01:07(P) & 13(P)	21 years 09-01-84/08-31-05 \$861 paid for term in '87	Utility Sublease Participation "A"-11-12-59/08-31-84 \$476.66 "B"-07-01-43/08-31-84: \$803.34 Grand total paid 1987: \$2,141.00
HAWAII	188 Easement	HELCO P.O. Box 1027 Hilo, Hawaii 96721-1027	Kamoa 9-3-01:02(P)	Perpetual 02-01-85 \$1 for term	Poles and powerlines
HAWAII	191 Pub. Serv.	U.S. Postal Service Hilo Post Office Hilo, Hawaii 96720	Panaewa 2-2-47:01(P)	Perpetual 06-01-84 \$1 for term	Homesteaders' mailboxes
HAWAII	198 Pub. Serv.	Ka Ohana O Ka Loe P.O. Box 266 Naalehu, Hawaii 96722	Kamoa-Puueo 9-3-01:03(P), 07(P) & 11(P)	5 years 08-01-85/07-31-90 \$1 for term	Preservation of historic sites
HAWAII	200 Easement	HELCO & H-TEL P.O. Box 1027 Hilo, Hawaii 96720	Waialae 2-2-61:08(P) & 09(P)	Perpetual or termination of use 12-06-85 \$1 for term	Poles and powerlines
HAWAII 0.717	201 Comm. Cntr.	The Royal Order of Kamehameha I Mamalahoe Chapter No. 2 c/o Clifford F. Anderson 1212 Punahou Street, Apt. #3205 Honolulu, Hawaii 96826	Keaukaha 2-1-21:43(P)	20 years 06-01-85/05-31-05 \$1 for term	Cultural/social meeting hall
HAWAII	204 Easement	U.S. Dept. of Transportation Federal Aviation Admin. P.O. Box 50109 Western Pacific Region Honolulu, Hawaii 96850	Waialae 2-1-13:01(P)	10 years 07-01-85/06-30-95 @ \$468	Access road to middle marker site - Hilo Airport
HAWAII	206 Easement	U.S. Dept. of the Interior USF & WS Lloyd 500 Bldg., Suite 1692 500 N.E. Multnomah St. Portland, Oregon 97232	Humuula 3-8-01:02(P)	Perpetual 06-01-86 \$900 paid for term	Roadway
HAWAII 1.061	208 Easement	Trustees of the Liliuokalani Trust c/o First Hawaiian Bank 161 South King Street Honolulu, Hawaii 96813	Humuula 3-8-01:09 (P)	Perpetual or termination of use 06-01-86 \$530 paid in advance for term	50-ft. wide road
HAWAII 0.665	225 Easement	HELCO & H-TEL P.O. Box 1027 Hilo, Hawaii 96720	Waialae 2-2-61:46(P)	Perpetual or termination of use 07-22-87 \$1 for term	Poles, powerlines and anchors

ISLE/ACR	#/USE	LICENSEE/ADDRESS	LOCATION/TMK	TERMS	REMARKS
HAWAII 0.723	229 Easement	HELCO & H-TEL P.O. Box 1027 Hilo, Hawaii 96720	Panaewa 2-1-25:89	Perpetual or termination of use 04-24-87 \$1 for term	Poles, powerlines and electric transformer
HAWAII 18.242	234 Easement	Dept. of Water Supply 25 Aupuni Street Hilo, Hawaii 96720	Puukapu 6-4-01:117 6-4-02:123 (P) & 143 6-5-01:11(P)	50 years 12-28-86/12-27-36 \$1 for term and 108 water commitments for Puukapu acceleration lots	Municipal water facilities
KAUAI	049 Easement	Kauai Electric P.O. Box 278 Elele, Hawaii 96705	Kekaha 1-3-02 (Within roadway)	21 years 09-24-76/09-23-97 @ \$1	Poles and powerlines
KAUAI	055 Easement	Kauai Electric P.O. Box 278 Elele, Hawaii 96705	Anahola 4-8-03:Various (P)	21 years 01-28-77/01-27-98 @ \$1	Poles and powerlines: File Plan 1518
KAUAI	097 Easement	Vernon K. & Emaline White P.O. Box 155 Anahola, Hawaii 96703	Anahola 4-8-11:16(P)	Perpetual or until termination of use 04-14-78 \$260 paid for term in '78	Access and Utility
KAUAI	166 Easement	Citizens Utilities Co. & H-TEL P.O. Box 278 Elele, Hawaii 96705	Anahola 4-8-03:08(P)	Perpetual 07-01-83 \$25 for term	Utility
KAUAI	202 Easement	Dennis I. Smith P.O. Box 493 Anahola, Hawaii 96703	Anahola 4-8-11:22(P)	Perpetual 04-30-87 \$1,250 for term	Roadway and waterline
KAUAI	202-A Easement	Kauai Electric & H-TEL P.O. Box 278 Elele, Hawaii 96705	Anahola 4-8-11:22(P)	Perpetual 03-06-87 \$1 for term	Utility
KAUAI 6.990	218 Park	County of Kauai 4280 Rice Street Lihue, Hawaii 96766	Anahola 4-8-09:01	5 years 05-11-87/05-10-92 \$1 for term	Operation and maintenance of Anahola Village Park
MAUI 4.743	005 Park	County of Maui 200 South High Street Wailuku, Hawaii 96793	Paukukalo 3-3-05:86	21 years 05-05-75/05-04-96 @ \$1	Paukukalo Public Park
MAUI 1.630	040 Comm. Cntr.	Paukukalo Hawaiian Homes Commission Assn. 773 Kawanakoa Street Wailuku, Hawaii 96793	Paukukalo 3-3-05:87	21 years 11-10-71/11-09-92 @ \$1	Recreation Center
MAUI	100 Easement	Maui Electric Company, Ltd. 210 Kamehameha Avenue Kahului, Hawaii 96732	Kula 2-2-02:14(P)	Perpetual or until termination of use 05-26-78 \$279 paid for term in '78	Poles and powerlines
MAUI 0.274	116 Easement	County of Maui Dept. of Public Works 200 High Street Wailuku, Hawaii 96793	Paukukalo 3-3-05:03	21 years 11-01-79/10-31-00 \$1 for term	Paukukalo Sewer
MAUI	174 Quarry	County of Maui Dept. of Public Works 200 High Street Wailuku, Hawaii 96793	Kahikinui 1-9-01:03(P)	1 year 12-01-85/11-30-88 \$1.75/cu. yd.	Paid \$1,076.25 June 27, 1988
MAUI	185 Easement	Maui Electric Company, Ltd. & H-TEL P.O. Box 398 Kahului, Hawaii 96732	Paukukalo 3-3-06:53	Perpetual 02-01-85 \$1 for term	Roadways
MAUI	187 Easement	County of Maui Dept. of Water Supply 200 South High Street Wailuku, Hawaii 96793	Paukukalo 3-3-06	Perpetual or termination of use 02-01-85 \$1 for term	Waterlines

ISLE/ACR.	#/USE	LICENSEE/ADDRESS	LOCATION/TMK	TERMS	REMARKS
MOLOKAI 12.000	001 Pub. Serv.	Dept. of Land & Natural Resources 1151 Punchbowl Street Honolulu, Hawaii 96813	Kamiloloa 5-4-03:03(P)	10 years 05-01-86/04-30-96 @ \$1	Cooperative Mgmt. Agreement Endangered species reserve
MOLOKAI 0.476	002 Pub. Serv.	County of Maui 200 South High Street Wailuku, Hawaii 96793	Hoolehua/Palaau 5-2-15:51	21 years 10-18-74/10-17-95 @ \$1	Hoolehua Fire Substation
MOLOKAI 1.048	009 Cemetery	County of Maui 200 South High Street Wailuku, Hawaii 96793	Hoolehua/Palaau 5-2-17:22	Open Gratis 11-03-51 may be terminated at the end of any calendar month	Molokai Veterans Cemetery
MOLOKAI 24.194	010 School	Dept. of Education P.O. Box 158 Hoolehua, Hawaii 96729	Hoolehua/Palaau 5-2-15:46	6 mos. revocable 11-06-51 Gratis	Molokai High School
MOLOKAI 522.824	042 Game Mgt.	Dept. of Land & Nat. Resources and F & G Management P.O. Box 342 Kaunakakai, Hawaii 96748	Hoolehua/Palaau 5-2-01:01 5-4-03:03 5-2-10:01	21 years 09-12-67/09-11-88 Gratis	Game Management Area Expired
MOLOKAI 1.148	045 Comm. Cntr.	Liliuokalani Trust 1300 Halona Street Honolulu, Hawaii 96817	Kalamaula 5-2-09:30	21 years 05-25-71/05-24-92 @ \$1	Child Welfare Center
MOLOKAI 0.064	064 Easement	Na Hua Ai Farms P.O. Box 165 Hoolehua, Hawaii 96729	Hoolehua/Palaau 5-2-01:05(P)	25 years or until termination of GL-185 Gratis 09-19-77/09-18-02	Waterline
MOLOKAI 6.924	066 Pub. Serv.	County of Maui Kaunakakai, Hawaii 96748	Kalamaula 5-2-11:21	21 years 04-25-69/04-24-90 @ \$1	Refuse disposal site
MOLOKAI	109 Easement	DLNR-DOWALD 1151 Punchbowl Street Honolulu, Hawaii 96813	Hoolehua/Palaau 5-2-04	Perpetual or until t ermination of use 10-01-78 Gratis	Waterline
MOLOKAI	110 Easement	Molokai Electric P.O. Box 378 Kaunakakai, Hawaii 96748	Hoolehua/Palaau 5-2-15:01(P), 02(P) & 51(P)	21 years 12-15-78/12-14-99 \$21 for term	Powerlines to Fire, Dept. Rec./Comm. Cntr. & Molokai High School
MOLOKAI 0.162	140 Easement	Molokai Electric Co., Ltd. P.O. Box 378 Kaunakakai, Hawaii 96748	Kalamaula 5-2-11:01(P)	21 years 01-01-67/12-31-88 04-01-82/03-31-87 \$100.50 paid for term in '82	Powerlines (21 yrs.) Waterline (5 yrs.)
MOLOKAI 0.922	189 Pub. Serv.	First Hawaiian Homes FCU Federal Credit Union P.O. Box 155 Hoolehua, Hawaii 96729	Hoolehua 5-2-23:01	20 years 02-01-85/01-31-05 \$1 for term	Credit union office
MOLOKAI	207 Easement	Molokai Ranch, Ltd. P.O. Box 4039 Honolulu, Hawaii 96812 Reciprocal perpetual appurtenant water pipeline easements (3 separate easements)	Palaau/Kalamaula 5-2-01:04(P) & 30(P) 5-2-10:01(P)	Perpetual 08-27-86 \$1 for term	Waterlines
MOLOKAI 3.290	210 Easement	DLNR-DOWALD 1151 Punchbowl Street Honolulu, Hawaii 96813	Kalamaula 5-2-10:01(P)	Perpetual or termination of use 08-31-66 \$1 for term	Waterlines
MOLOKAI 233.680	215 Park	DLNR-State Parks 1151 Punchbowl Street Honolulu, Hawaii 96813	Palaau, Apana 3 5-2-13:06	5 years 12-28-86/12-28-91 \$1 for term	Operation and maintenance of park
MOLOKAI	001 Water Purchase	Molokai Electric, Co., Ltd. P.O. Box 378 Kaunakakai, Hawaii 96748	Kalamaula 5-2-11:33(P)	21 years 11-14-85/11-13-06 @ Prevailing Maui County water rates	Maximum allowable usage: 165,000 gallons per month

ISLE/ACR.	#/USE	LICENSEE/ADDRESS	LOCATION/TMK	TERMS	REMARKS
OAHU 0.712	003 Comm. Cntr.	Nanakuli Homesteaders' Assn., Inc. 89-188 Farrington Highway Nanakuli, Hawaii 96792	Nanakuli 8-9-05:14	21 years 12-18-74/12-17-95 @ \$1	Office bldg. Terminated 04-14-88
OAHU	004 Pub. Serv.	Dept. of Health 741-A Sunset Avenue Honolulu, Hawaii 96816	Nanakuli 8-9-05:14 Building "A"	21 years 12-18-74/12-17-95 @ \$1	Health services
OAHU	017 Easement	HECO P.O. Box 2750 Honolulu, Hawaii 96803	Waianae 8-5-04:59(P) 8-6-03:27(P)	21 years 09-02-71/09-01-92 \$1 for term	Right-of-Way for poles and powerlines
OAHU	020 Easement	HECO P.O. Box 2750 Honolulu, Hawaii 96803	Nanakuli 8-9-09:Various	21 years 05-20-68/05-19-89 \$1 for term	Right-of-Way for underground powerlines
OAHU	022 Easement	Board of Water Supply P.O. Box 3410 Honolulu, Hawaii 96813	Nanakuli 8-9-02, 8-9-03, 8-9-04, 8-9-05, 8-9-06 & 8-9-09	21 years 02-16-71/02-15-92 \$1 for term	Waterline within roads
OAHU	030 Easement	GASCO P.O. Box 3379 Honolulu, Hawaii 96801	Papakolea/Kewalo 2-4-41:27	20 years 09-09-68/09-08-88 \$1 for term	Gas line Expired
OAHU	031 Easement	HECO & H-TEL P.O. Box 2750 Honolulu, Hawaii 96803	Papakolea/Kewalo 2-2-15:65(P) 2-2-16:29(P)	21 years 08-21-74/08-20-95 \$1 for term	Utility
OAHU	032 Easement	Hawaiian Electric Co., Inc. P.O. Box 2750 Honolulu, Hawaii 96803	Waimanalo 4-1-30:24(P), 30(P), 36(P) 4-1-31:11 & 36(P)	21 years 12-03-71/12-02-92 \$1 for term	Underground powerlines
OAHU	035 Easement	Hawaiian Electric Co., Inc. P.O. Box 2750 Honolulu, Hawaii 96803	Waimanalo 4-1-30 4-1-31	21 years 12-19-73/12-18-94 \$1 for term	Right-of-Way for underground powerlines
OAHU	036 Easement	Dept. of Public Works 650 South King Street, 11th Fl. Honolulu, Hawaii 96813	Waimanalo 4-1-29	21 years 07-26-67/07-25-88 \$1 for term	Right-of-Way for sewers Expired
OAHU	037 Easement	Dept. of Public Works P.O. Box 3410 Honolulu, Hawaii 96801	Waimanalo 4-1-29:Various (P) 4-1-16:27(P)	21 years 07-26-67/07-25-88 \$1 for term	Right-of-Way for storm drains Expired
OAHU	038 Easement	HECO & H-TEL P.O. Box 2750 Honolulu, Hawaii 96803	Waimanalo 4-1-03	21 years 07-23-80/07-22-01 \$1 for term	Right-of-Way for powerlines
OAHU	039 Easement Repl. by Lic. 230	Board of Water Supply 630 South Beretania Street Honolulu, Hawaii 96813	Waimanalo 4-1-08	21 years 08-30-66/08-29-87 \$1 for term	10 ft. wide waterline easement Expired
OAHU	048 Easement	HECO 900 Richards Street Honolulu, Hawaii 96803	Nanakuli 8-9-10:Various (P)	21 years 10-29-76/10-28-97 @ \$1	Right-of-Way for underground powerlines
OAHU	051 Easement	Board of Water Supply 630 South Beretania Street Honolulu, Hawaii 96813	Nanakuli 8-9-03	21 years 06-03-69/06-02-90 \$1 for term	Waterline and drainag
OAHU	053 Easement	Cablevision, Inc. 87-680 Farrington Highway Waianae, Hawaii 96792	Nanakuli 8-9-10:Various	21 years 03-18-77/03-17-98 \$1 for term	Television cable lines
OAHU	054 Easement	Cablevision, Inc. 87-680 Farrington Highway Waianae, Hawaii 96792	Waianae 8-5-04:Various 8-5-31	21 years 04-29-77/04-28-98 \$1 for term	Television cable lines
OAHU	056 Easement	Hawaiian Telephone Company P.O. Box 2200 Honolulu, Hawaii 96805	Nanakuli 8-9-10:Various	21 years 03-18-77/03-17-98 \$1 for term	Underground communication cable

ISLE/ACR	#/USE	LICENSEE/ADDRESS	LOCATION/TMK	TERMS	REMARKS
OAHU	057 Easement	Hawaiian Telephone Company 1177 Bishop Street Honolulu, Hawaii 96813	Waianae 8-5-04:Various 8-5-30 8-5-31	21 years 04-29-77/04-28-98 \$1 for term	Underground communication cable
OAHU	061 Easement	HECO 900 Richards Street Honolulu, Hawaii 96813	Waianae 8-5-04:Various 8-5-30 8-5-29	21 years 04-29-77/04-28-98 \$1 for term	Underground powerlines
OAHU	062 Easement	Dept. of Public Works 650 South King Street Honolulu, Hawaii 96813	Nanakuli 8-9-10:Various (P) & 26(P)	Perpetual or until termination of use 07-29-77 Gratis	Drainage
OAHU	063 Easement	Dept. of Public Works 650 South King Street Honolulu, Hawaii 96813	Waianae 8-5-04:Various 8-5-30:06(P) & 121(P)	Perpetual or until termination of use 07-29-77 Gratis	Drainage
OAHU	068 Easement	Hawaiian Telephone Company 1177 Bishop Street Honolulu, Hawaii 96813	Nanakuli 8-9-07:(P)	Perpetual or until termination of use 08-26-77 \$1 for term	Communication lines
OAHU	093 Easement	Dept. of Public Works 650 South King Street Honolulu, Hawaii 96813	Papahale/Kewalo 2-2-15 2-4-41 & 42 2-5-21 & 22	65 years or until termination of use 08-29-75 \$1 for term	Sewer
OAHU	094 Easement	Dept. of Public Works 650 South King Street Honolulu, Hawaii 96813	Papahale/Kewalo 2-4-41 & 42 2-5-21	65 years or until utili- zation ceases 08-29-75 \$1 for term	Drainage
OAHU 33.340	A-101 Quarry	Grace Pacific Corporation Concrete & Rock Division P.O. Box 78 Honolulu, Hawaii 96810	Waimanalo 4-1-08:03	20 years 07-01-68/06-30-88 Prevailing royalty rate	Coral mining Expired
OAHU	103 Easement	Hawaiian Telephone Company P.O. Box 2200 Honolulu, Hawaii 96805	Nanakuli 8-9-05:11, 17, 19, 98(P)	21 years 06-01-78/05-31-99 \$21 for term	Microwave-airways easement
OAHU	106 Easement	Board of Water Supply 630 South Beretania Street Honolulu, Hawaii 96813	Papahale/Kewalo 2-4-42:01(P) & 34(P)	21 years 08-25-78/08-24-99 \$21 for term	Ingress/egress over roadway lot
OAHU 7.505	119 Park	Dept. of Parks & Recreation 650 South King Street Honolulu, Hawaii 96813	Waianae 8-5-32:39	21 years 06-26-80/06-25-01 \$21 for term	Park & playground
OAHU	124 Easement	Dept. of Public Works 650 South King Street Honolulu, Hawaii 96813	Waimanalo 4-1-08:01(P)	21 years 03-25-81/03-24-02 Gratis	Waimanalo flood control channel
OAHU	135 Easement	Dept. of Public Works 650 South King Street Honolulu, Hawaii 96813	Waianae 8-5-32:Various (P) 8-5-04:02(P)	21 years 07-30-81/07-29-02 \$21 for term	Drainage
OAHU 1.660	136 Reservoir	Board of Water Supply P.O. Box 3410 Honolulu, Hawaii 96801	Waianae 8-5-04:01(P) & 52(P)	21 years 08-27-81/08-26-02 \$21 for term	Water facilities
OAHU	137 Easement	Dept. of Public Works 650 South King Street Honolulu, Hawaii 96813	Waimanalo	21 years 10-29-81/10-28-02 \$21 for term	Bikeway
OAHU 3.196	138 Easement	Board of Water Supply 630 South Beretania Street Honolulu, Hawaii 96813	Nanakuli 8-9-07:01(P) & 03(P)	21 years 12-07-81/12-06-02 \$21 for term	Maintain boosting station and access road

ISLE/ACR.	#/USE	LICENSEE/ADDRESS	LOCATION/TMK	TERMS	REMARKS
OAHU	144 Easement	Dept. of Public Works 650 South King Street Honolulu, Hawaii 96813	Nanakuli 8-9-06:A-U-2	21 years 06-26-82/06-25-03 \$21 for term	Road
OAHU	146 Easement	Dept. of Public Works 650 South King Street Honolulu, Hawaii 96813	Nanakuli 8-9-07:01(P)	21 years 10-01-82/09-30-03 @ \$1	Drainage
OAHU	147 Easement	HECO & H-TEL P.O. Box 2750 Honolulu, Hawaii 96803	Nanakuli 8-9-07	21 years 10-01-82/09-30-03 \$1 for term	Utility
OAHU	148 Easement	Board of Water Supply 630 South Beretania Street Honolulu, Hawaii 96813	Nanakuli 8-9-07	21 years 10-01-82/09-30-03 \$21 for term	Waterline
OAHU	149 Easement	Waianae TV & Communication Corp. 2669 Kilihau Street Honolulu, Hawaii 96819	Nanakuli	21 years 10-01-82/09-30-03 \$21 for term	Cable TV
OAHU	150 Easement	HECO & H-TEL P.O. Box 2750 Honolulu, Hawaii 96803	Waianae 8-5-33	21 years 09-24-82/09-23-03 \$1 for term	Poles and powerlines
OAHU	152 Easement	Waianae TV & Communication Corp. 2669 Kilihau Street Honolulu, Hawaii 96819	Waianae 8-5-23	21 years 09-30-82/09-29-03 \$21 for term	Cable TV
OAHU	167 Easement	Hawaiian Electric Co., Inc. P.O. Box 2750 Honolulu, Hawaii 96803	Waimanalo 4-1-09:281	21 years 08-01-84/07-31-05 \$47 paid for term in '85	Pole anchor
OAHU	170 Easement	Dept. of Public Works 650 South King Street Honolulu, Hawaii 96813	Nanakuli 8-9-03 8-9-07	21 years 11-17-83/11-16-04 \$21 for term	Drainage
OAHU	171 Easement	Board of Water Supply 630 South Beretania Street Honolulu, Hawaii 96813	Nanakuli 8-9-03 8-9-07	21 years 11-17-83/11-16-04 \$21 for term	Waterline
OAHU	172 Easement	HECO & H-TEL P.O. Box 2750 Honolulu, Hawaii 96803	Nanakuli 8-9-03 8-9-07	21 years 11-17-83/11-16-04 \$1 for term	Utility
OAHU	173 Easement	Waianae TV & Communication Corp. 2669 Kilihau Street Honolulu, Hawaii 96819	Nanakuli 8-9-03	21 years 11-17-83/11-16-04 \$21 for term	Cable TV
OAHU	178 Easement	Dept. of Public Works 650 South King Street Honolulu, Hawaii 96813	Waimanalo 4-1-03 4-1-08	21 years 07-01-84/06-30-05 \$21 for term	Sewage facilities
OAHU 50.720	180 Quarry	GracePacific Corporation Concrete & Rock Division P.O. Box 78 Honolulu, Hawaii 96810	Waimanalo 4-1-08:02	20 year 11-01-72/10-31-92	8% of the gross or 36¢ per ton \$108,107.11 Paid, FY 1988
OAHU	183 Easement	HECO & H-TEL P.O. Box 2750 Honolulu, Hawaii 96803	Papahalea/Kowalo 2-2-15:Various	Perpetual \$1 for term	Utility
OAHU 0.873	184 Park	Dept. of Parks & Recreation 650 South King Street Honolulu, Hawaii 96813	Papahalea/Kowalo 2-2-15:25	21 years 12-27-84/12-26-05 \$1 for term	Park and playground
OAHU	196 Easement	HECO P.O. Box 2750 Honolulu, Hawaii 96803	Waimanalo 4-1-08:01(P)	Perpetual 04-26-85 \$1 for term	Poles and powerlines
OAHU	199 Pub. Serv.	City & County of Honolulu Fire Department 1455 South Beretania Street Honolulu, Hawaii 96814	Nanakuli 8-9-05:70	21 years 04-24-85/04-23-06 \$3,540 per annum first 10 years	Nanakuli Fire Station

ISLE/ACR.	#/USE	LICENSEE/ADDRESS	LOCATION/TMK	TERMS	REMARKS
OAHU	205 Easement	U.S. Dept. of Transportation Federal Aviation Admin. P.O. Box 50109 Western-Pacific Region Honolulu, Hawaii 96850	Waimanalo 4-1-14:15 & 16	10 years 07-01-85/06-30-95 @ \$1,100	Remote communications facilities
OAHU 0.124	211 Easement	GASCO, Inc. P.O. Box 3379 Honolulu, Hawaii 96842	Waimanalo 4-1-03:29	21 years 08-27-86/08-26-07 \$21 for term	Gas tank holder station
OAHU	213 Parks	City & County of Honolulu Honolulu Hale Honolulu, Hawaii 96813	Beach parks at Nanakuli, Waimanalo, Kalaheo, Kaupo & Makapuu	5 years 12-28-86/12-28-91 \$1 for term	Management of parks
OAHU	224 Easement	State of Hawaii Dept. of Education P.O. Box 2360 Honolulu, Hawaii 96804	Lualualei/Waianae 8-6-01:51(P)	Perpetual 02-09-87 \$1 for term	Drainage easement for Leihoku Elem. School
OAHU	230 Easement	Board of Water Supply 630 South Beretania Street Honolulu, Hawaii 96813	Waimanalo 4-1-08:16,29, 30 & 31(P)	Perpetual or termination of use 08-30-87 \$1 for term	Waterlines

Appendix REVOCABLE PERMITS

Revocable Permit Summary by Island

	HAWAII	KAUAI	MAUI	MOLOKAI	OAHU	TOTAL
Number	10	12	2	7	16	47
Acreage	6,550	311	191	128	82	7,262
DHHL Annual Income	\$67,505	\$32,840	\$874	\$10,000	\$36,537	\$147,756

Revocable Permit Summary by Use

USE	NO.	ACREAGE	DHHL ANNUAL INCOME
Agriculture	8	75	\$ 10,607
Cane	1	235	24,525
Churches	3	6	3,984
Commercial	6	5	26,190
Construction	1	4	1,397
Dairy	1	9	4,418
Parking/Garden	1	0	3,970
Pasture	13	6,915	42,560
Public Service	9	4	23,880
Residence	2	2	3,290
Storage	2	7	2,835
TOTAL	47	7,262	\$147,756

Revocable Permits

ISLE/ AREA	NO./USE	PERMITTEE	LOCATION	ANN. RENT/ DT. ISSUED
HAWAII 1.967	001 Commercial	Masaru Doi c/o Doi Store Kawaihae, Hawaii 96743	Kawaihae 6-1-03:03, 19 & 20	\$17,896 07-01-77 Terminated 06-30-88
HAWAII 4,955.120	008 Pasture	Richard Smart P.O. Box 458 Kamuela, Hawaii 96743	Waimea/Puukapu 6-4-04:09(P) & 10; 6-5-01:11 & 19	\$31,610 07-01-77
HAWAII 1.364	034 Public Service	Dept. of Commerce & Consumer Affairs 2350 Dole Street Honolulu, Hawaii 96822	Waialea 2-1-13:08(P) & 149	\$518 06-01-79
HAWAII 0.500	035 Commercial	Motorola, Inc. 99-1180 Iwaena Street Aiea, Hawaii 96701	Waialea 2-1-13:149(P)	\$720 06-01-79
HAWAII 0.044	038 Church	Kamuela Congregation of Jehovah's Witness P.O. Box 2199 Kamuela, Hawaii 96743	Waimea/Puukapu 6-4-01:59(P)	\$400 05-01-81
HAWAII 0.035	039 Public Service	Waimea Civitan Club P.O. Box 443 Kamuela, Hawaii 96743	Waimea/Puukapu 6-4-01:59(P)	\$323.04 03-01-81
HAWAII 0.115	056 Public Service	County of Hawaii Kawaihae Fire Station No. 14 466 Kinole Street Hilo, Hawaii 96720	Kawaihae 6-1-02:65(P)	\$1,056 08-01-83 Terminated 11-30-87
HAWAII 0.422	079 Parking lot/ Garden	H.H. Inc. dba Harbor Hut P. O. Box 5483 Kailua-Kona, Hawaii 96745	Kawaihae 6-1-02:63(P) & 65(P)	\$3,970.08 07-01-85

ISLE/ AREA	NO./USE	PERMITTEE	LOCATION	ANN. RENT/ DT. ISSUED
HAWAII 0.540	080 Commercial	Edward J. & Naomi Laau dba Laau Fishing P. O. Box 4913 Kawaihae, Hawaii 96743	Kawaihae 6-1-03:18	\$4,652 06-01-85
HAWAII 1,590.000	088 Pasture	Estate Systems, Inc. c/o Gary Yamagata 641 Keeaumoku Street, Suite 2 Honolulu, Hawaii 96814	Kamaloa-Puuco 9-3-01:02(P)	\$6,360 from 07-01-86
KAUAI 21.223	022 Pasture	Theodore Williams P.O. Box 187 Anahola, Hawaii 96703	Anahola 4-8-03:05	\$1,146.12 07-01-78
KAUAI 14.000	023 Agriculture	William Lemn P.O. Box 213 Anahola, Hawaii 96703	Anahola 4-8-03:28	\$1,638 07-01-78
KAUAI 10.340	027 Pasture	Emmaline White P.O. Box 155 Anahola, Hawaii 96703	Anahola 4-8-11:03 & 04	\$558.36 10-01-78
KAUAI 235.303	029 Cane	Lihue Plantation Co., Ltd. P.O. Box 3140 Honolulu, Hawaii 96802	Anahola 4-8-03:19, 20(P) & 21 Pd. 1988 percentage rent of \$24,625.45	\$8,577.82 or 4.25% of the gross proceeds 12-01-78
KAUAI 3.313	045 Agriculture	Solomon Lovell P.O. Box 33 Anahola, Hawaii 96703	Anahola 4-8-06:04	\$241.92 12-01-81
KAUAI 2.866	047 Pasture	Clay Kelekoma P.O. Box 135 Anahola, Hawaii 96703	Anahola 4-8-15:24 & 26	\$154.80 04-15-82
KAUAI 2.420	050 Pasture	James Oshita P.O. Box 123 Anahola, Hawaii 96703	Anahola 4-8-11:20 & 25	\$130.68 06-01-82
KAUAI 0.168	055 Storage	Anahola Canoe Racing Association c/o Vernon White P. O. Box 155 Anahola, Hawaii 96703	Anahola 4-8-12:10	\$240 07-01-83
KAUAI 14.903	063 Pasture	Esther K. Medeiros P.O. Box 387 Anahola, Hawaii 96703	Anahola 4-8-11:05, 06, 11, 13 & 49	\$804.72 02-01-84
KAUAI 0.550	078 Agriculture	Kathryn D. Martin P.O. Box 430 Anahola, Hawaii 96703	Anahola 4-8-11:45(P)	\$1,800 01-11-85
KAUAI 0.180	081 Residence	Shigeko Yoshii c/o Kiyoshi Yoshii 4777 Pelehu Road Kapaa, Hawaii 96746	Anahola 4-8-03:07(P)	\$1,500 06-01-85
KAUAI 5.430	087 Church	Lihue First Church P.O. Box 1812 Lihue, Hawaii 96766	Anahola 4-8-07:20	Rent waived 06-01-86
MAUI 129.000	030 Pasture	Haleakala Ranch Co. 529 Kealahou Avenue Makawao, Hawaii 96768	Kahikinui 1-9-01:11	\$329.28 12-01-78
MAUI 62.000	046 Pasture	Haleakala Ranch Co. 529 Kealahou Avenue Makawao, Hawaii 96768	Kahikinui 1-9-01:08	\$544.44 04-19-83
MOLOKAI 0.860	011 Commercial	Patricio Sanchez, Jr. c/o Kalamaula Motors Kaunakakai, Hawaii 96748	Kalamaula 5-2-08:107	\$1,182 08-01-82

ISLE/ AREA	NO./USE	PERMITTEE	LOCATION	ANN. RENT/ DT. ISSUED
MOLOKAI 91.616	014 Pasture	James F. Lindsey P.O. Box 153 Kaunakakai, Hawaii 96748	Hoolehua/Palaau 5-2-07:90	\$381.60 08-01-82
MOLOKAI 4.000	064 Pasture	Larry L. Rawlins P.O. Box 346 Kaunakakai, Hawaii 96748	Kapaakea 5-4-03:03(P)	\$120 11-01-83
MOLOKAI 30.000	073 Agriculture	Hawaiian Research, Ltd. P.O. Box D Kaunakakai, Hawaii 96748	Palaau 5-2-11:33	\$1,260 08-01-84
MOLOKAI 1.180	086 Commercial	Hale O Kawanakao, Inc. c/o Mrs. Louise Borsella P.O. Box 836 Kaunakakai, Hawaii 96748	Kalamaula 5-2-09:18(p)	\$240 08-01-85
MOLOKAI 0.000	089 Public Service	Molokai Community Service Council, Inc. P.O. Box 1046 Kaunakakai, Hawaii 96748	Hoolehua 5-2-15:01(P)	\$5,184 (07-01-86 to 06-30-87) 07-01-85
MOLOKAI 0.492	090 Public Service	Maul Economic Opportunity, Inc. c/o Carnation Nanod P.O. Box 2122 Kahului, Hawaii 96732	Hoolehua/Palaau 5-2-15:02(P)	\$1,633.20 06-16-86
OAHU 4.000	003 Agriculture	Hiromu Omura 86-369 Luahalei Homestead Road Waianae, Hawaii 96792	Luahalei 8-6-01:52	\$1,158.96 06-01-83
OAHU 7.000	004 Storage	Lawrence Z. Agena 86-410 Halona Road Waianae, Hawaii 96792	Luahalei 8-6-01:51	\$2,595 06-01-77
OAHU 8.940	005 Dairy	Ernest M. Souza c/o Mrs. Bernie Rzonca 86-136 Kakalapola St. Waianae, Hawaii 96792	Luahalei 8-6-03:52	\$4,418.28 07-01-77
OAHU 4.000	018 Agriculture & Pasture	Mrs. Waldron Henderson 41-124 Kulaiwi Street Waimanalo, Hawaii 96795	Waimanalo 4-1-08:51	\$600 01-01-78
OAHU 0.510	037 Church	Ke Ola II Oka Malamalama 89-280 Farrington Highway Waianae, Hawaii 96792	Nanakuli 8-9-05:06	\$3,584.24 09-01-80
OAHU 8.000	052 Agriculture	Mr. & Mrs. Steven Aipa 87-1060 Hakimo Road Waianae, Hawaii 96792	Luahalei 8-6-03:03(P)	\$1,608 08-15-82
OAHU 3.856	053 Construction	The Oceanic Institute Makapuu Point Waimanalo, Hawaii 96795	Waimanalo 4-1-14:11	\$1,396.80 09-01-82
OAHU 11.150	066 Agriculture	Doctor Nui Loa Price P.O. Box 1067 Kaneohe, Hawaii 96744	Luahalei 8-6-03:02	\$2,300 02-01-84 Terminated 02-17-88
OAHU 0.231	068 Public Service	Child & Family Service 200 N. Vineyard Blvd., Suite 20 Honolulu, Hawaii 96817	Nanakuli 8-9-05:22(P)	\$2,038.19 12-10-83
OAHU 0.463	069 Public Service	Hale Ola Ho'opakea, Inc. 89-137 Nanakuli Avenue Waianae, Hawaii 96792	Nanakuli 8-9-05:22(P)	\$2,087.97 04-01-84
OAHU 1.927	082 Pasture	Joseph Williams 6307 Ookala Place Honolulu, Hawaii 96825	Waimanalo 4-1-09:263	\$288 01-01-86

ISLE/ AREA	NO./USE	PERMITTEE	LOCATION	ANN. RENT/ DT. ISSUED
OAHU 0.187	083 Commercial	Hul Mea Hana O Hawaii c/o Charles C. Gumapac, Sr. 41-924 Kalaniana'ole Hwy. Waimanalo, Hawaii 96795	Waimanalo 4-1-09:271(P)	\$1,500 01-01-86
OAHU 29.000	084 Pasture	Waianae Valley Farm, Ltd. 1106 Liku Street Kailua, Hawaii 96734	Nanakuli 8-9-07:04	\$132 02-08-86 Terminated 03-12-88
OAHU 1.340	085 Public Service	Waianae District Comprehensive Health & Hospital Board, Inc. dba Waianae Coast Comprehensive Health Center 86-260 Farrington Highway Waianae, Hawaii 96792	Lualualei 8-6-01:41 & 46	\$10,800 from 10-16-86 04-16-86 Terminated 12-31-87
OAHU 1.840	091 Residence/ Pasture	Lawrence P. Carlos Walter G. Carlos P. O. Box 218 Waianae, Hawaii 96792	Waianae 8-5-04:59(P)	\$1,790 02-01-87
OAHU 0.000	093 Public Service	Waianae Coast Culture & Arts Society, Inc. 89-188 Farrington Highway Waianae, Hawaii 96792	Nanakuli 8-9-05:14(p) Building "B"	\$240 05-01-88

Appendix RIGHT OF ENTRY

Right of Entry Summary by Island

USE	HAWAII	KAUAI	MAUI	MOLOKAI	OAHU	TOTAL
Number	2	3	0	3	0	8
Acres	5	6	0	6,315	0	6,326
DHHL Annual Income	\$15,000	\$0	\$0	\$20,200	\$0	\$35,200

Right of Entry Summary by Use

USE	NO.	ACREAGE	DHHL ANNUAL INCOME
Cemetery	1	1	\$200
Community Center	1	7	0
Construction	1	5	15,000
Easements	2	0	0
Military	1	6,307	20,000
Parks	1	6	0
Residence	1	0	0
TOTAL	8	6,326	\$35,200

Right of Entry Permits

ISLE/AREA	NO./USE	PERMITTEE/ADDRESS	LOCATION/TMK	TERMS	ANNUAL RENT	REMARKS
HAWAII 5,000+	067 Constr.	HELCO P. O. Box 1027 Hilo, Hawaii 96721-1027	Hunua 3-8-01:07(P) & 1307	01-04-85 until execution of license. First Amendment: 10-01-86	\$600 1st 6 months; then \$20 per acre per month Paid \$15,000 in FY-1988	Staging area for construction of proposed 138KV powerline
Terminated 06-30-88						
HAWAII	076 Residence	Malama Ka Aina Hana Ka Aina, Inc. P. O. Box 5174 Hilo, Hawaii 96720	Keaukaha 2-1-13:01	09-24-86 until manage- ment plan for Keaukaha Tract II is accepted by HHC	\$1 for term	Allows members to reside at King's Landing
KAUAI	033 Easement	County of Kauai 4396 Rice Street Lihue, Hawaii 96766	Anahola 4-8-07:01 4-8-10:06 & 10	10 years 11-18-77/11-17-87	Gratis	Drainage purpose Clearing of stream
KAUAI 6,485	058 Parks	County of Kauai 4396 Rice Street Lihue, Hawaii 96766	Anahola 4-8-03:20(P) 4-8-14:06	12-17-81 until execution of license	\$1 for term	Operation & maintenance of parks
KAUAI	074 Easement	Kauai Electric & H-TEL P. O. Box 278 Elele, Hawaii 96705	Anahola 4-8-03:07, 08 & 24	07-02-84 until execution of license	\$1 for term	Utility
MOLOKAI 6,993	028 Community Center	County of Maui High & Aupuni Street Wailuku, Hawaii 96793	Hoolehua/Palaau 5-2-15:01(P)	08-04-77 until execution of license	Gratis	Recreation Center/ Office complex
MOLOKAI 1,354	032 Cemetery	County of Maui High & Aupuni Street Wailuku, Hawaii 96793	Kapaakea 5-4-03:12(P)	1 year 10-01-77 until land exchange is made	\$200.00	
MOLOKAI 6,307,000	075 Military	USA - Dept. of the Navy USMC Commanding Officer Marine Corps Air Station (Bldg. 242) Kaneohe Bay, Hawaii 96863-5501	Kalamaula/ Kapaakea 5-2-10:01(P) 5-4-03:03(P)	1-1/2 years 01-01-88/06-30-89	\$30,000 for base period of 200 days (\$5,000 paid quarterly)	Military training \$150 per day for each day exceeding the base period

Appendix
DEPARTMENT OF HAWAIIAN HOME LANDS EMPLOYEES
 As of June 30, 1988

Rowe, John L. K.
Deputy Director

Ah Nee, Roy K.
 Alducso, Eloise M.
 Arakaki, Richard T.
 Arreola, Allysia J.
 Asada, Rodney K.
 Asato, Sandra S.
 Awai, Daniel H.
 Billena, Marino
 Boteilho, Gerald A.
 Cacoulidis, Edwina H.
 Chang, Linda Mae
 Chillingworth, Luwana K.
 Chu, Joseph E.
 Dang, Russell
 Dela Cruz, Richard
 Du Pont, James W.
 Dumaran, Janice K.
 Ertekin, Julyet
 Frantz, Kalae C.
 Garcia, Juanito P.
 Good, George F.
 Gordon, Jane S.
 Harada, Ellen A.
 Hiapo, Jeannette
 Higashi, Johnette
 Hirayama, Frederick
 Hoe, Lori-Lee H.
 Hoffman, Cecilia K.
 Holt, Michele M.
 Icc, Charles
 Ing, Darrell H

Inouye, Linda A.
 Iwamoto, Linda N.
 Jichaku, Wayne B.
 Kaeo, Madalyn
 Kajiyama, Lorraine F.
 Kala, Anthony K.
 Kamibayashi, Erna
 Kanoura-Hatae, Michi
 Kaupu, Juliana K.
 Kawano, Roy M. L.
 Kitsu, Marilyn S.
 Kunihi, Bernard T.
 Lau, Rodney K. M.
 Leon Guerrero, Rosalyn
 Lindsey, James F.
 Lucero, Karen
 Luke, Helen Y.
 Lum, Winston K.
 Mahaulu, Rebecca K.
 Manzano, Rico P.
 Matsunaga, Stewart T.
 Meyers, Germaine K.
 Mitrulevich, Lori M.
 Moku, Jr., Harris
 Moniz, Stanley R.
 Montiho, Julie A.
 Moore, William L.
 Moses, Philip
 Murphy, Denise
 Naeole, Francis
 Nahoopii, Henry A.
 Nicolas, Alberta K.
 Noah, Margo K.

Nogami, Amy E.
 Okubo, Diane N.
 Oshita, Jean
 Padasdao, Imelda S.
 Pakele, Donald J.
 Pao, James Xzu
 Puailihau, Laurence K.
 Renken, Thelma M.
 Sanborn, Ralph W.
 Sato, Amy M.
 Serna, Patrick P.
 Spero, Mary E.
 Spoehr, Hardy
 Sugimoto, Warren N.
 Takahashi, Wayne F.
 Taylor, Bruce E.
 Tengan, Walter T.
 Thayer, Frank W.
 Toguchi, Kenneth H.
 Tomita, Walter W.
 Trinidad, Janice K.
 Tubera, Abigail L.
 Wain, Marla J.
 Wong, Benjamin
 Wong, Lester K. F.
 Wong, Michele
 Wong, Stanley H.
 Yagodich, Darrell C.
 Youn, Healani V.
 Young, Patrick K.



The department's Sustained Superior Performance Awardees are: (left to right) Imelda Padasdao, Account Clerk III; John Williams (Employee of the Year), Administrative Assistant VI; Mary Spero, Contract Specialist; and Ralph Sanborn, Homestead Development Coordinator.