

DAVID Y. IGE
GOVERNOR
STATE OF HAWAII

JOSH GREEN
LT. GOVERNOR
STATE OF HAWAII



WILLIAM J. AILA, JR.
CHAIRMAN
HAWAIIAN HOMES COMMISSION

STATE OF HAWAII
DEPARTMENT OF HAWAIIAN HOME LANDS

P. O. BOX 1879
HONOLULU, HAWAII 96805

August 15, 2019

Aloha DHHL Kaua`i Beneficiary,

The Department of Hawaiian Home Lands (DHHL) will be conducting a beneficiary consultation meeting to gather your input for the development of the **Pu`u `Ōpae Special Area Plan and Settlement Plan** to advance the efforts and work of the Kekaha Hawaiian Homestead Association and West Kaua`i community to develop the lands at Pu`u `Ōpae for kuleana homesteading and agricultural uses. A previous meeting was held by DHHL in November 2018 for this planning process. This second meeting will be held on:

**Thursday August 29, 2019
6:00PM to 8:00PM
Kekaha Elementary School Cafeteria
8140 Kekaha Road, Kekaha, HI 96752**

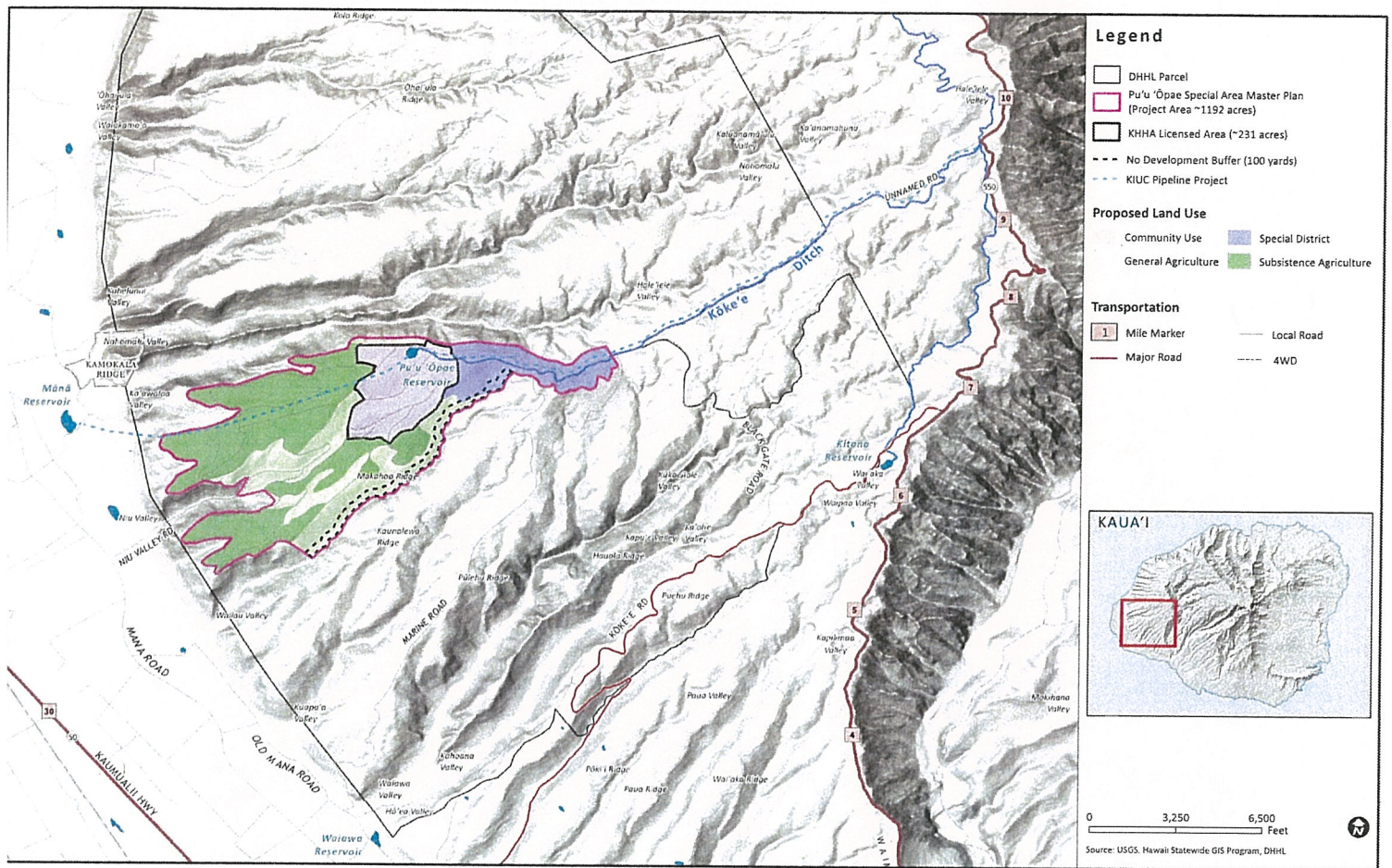
Please note, this letter is NOT a notice for a homestead award. This meeting is an opportunity to learn more about this initiative at Pu`u `Ōpae. The intended outcomes of the August meeting is to: (1) review the input beneficiary input we received at the November 2018 meeting and get clarity of beneficiary vision for the area; (2) get a better understanding of appropriate economic activities and (3) get confirmation of infrastructure and lotting preferences.

We hope to see you at this meeting. Should you have any questions, please contact Nancy McPherson at nancy.m.mcpherson@hawaii.gov or 808-620-9519.

Aloha,

William Aila Jr. Chairman,
Hawaiian Homes Commission

Pu`u `Ōpae Special Area Plan and Settlement Plan



What are Kuleana Homestead Leases?

Kuleana homestead leases are authorized pursuant to Hawai'i Administrative Rule §10-3-30. These lands are designated for Kuleana homestead development because of the land's remoteness and excessive costs to develop the tract. Such parcels only include an unpaved right-of-way to access the site.

In accordance with Hawai'i Administrative Rule §10-3-30, applicants, together with DHHL, must develop a plan for settlement and development of the designated tract. This plan is subject to approval by the Hawaiian Homes Commission.

Additionally, the administrative rule requires that all lessees must agree to the following: participate as an active member in their kuleana homestead association and to comply with the association's rules and agreements; accept the lot in its "as is" condition; and participate in the maintenance of the right-of-way to the kuleana homestead tract and lots.