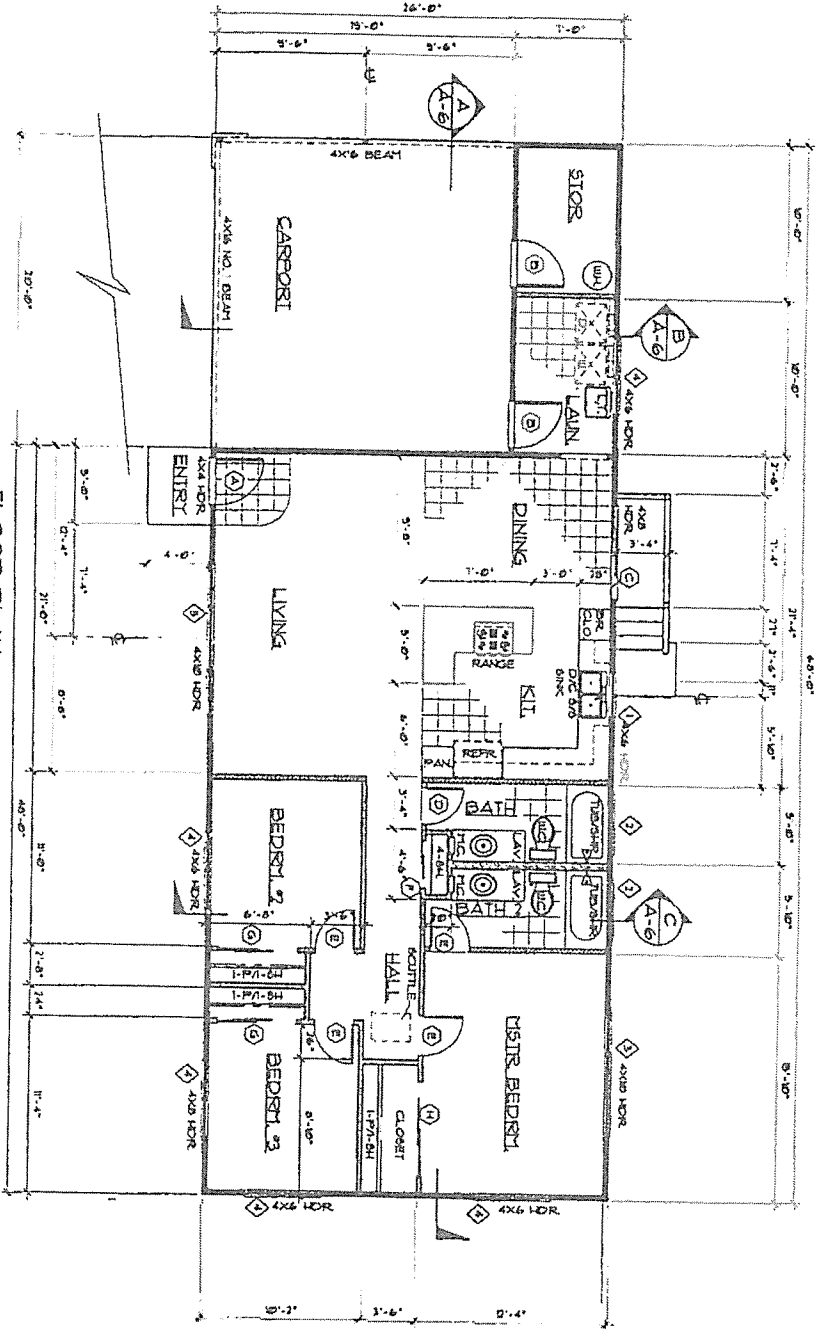


Keaukaha - lot 131-A-1, 371 Lauae Yung Avenue, Hilo HI

TMK: (3)2-1-021:111 - lot size: 10,0001 SQ. FT.

Price: \$216,122.00



FLOOR PLAN
SCALE: 1/4" = 1'-0"

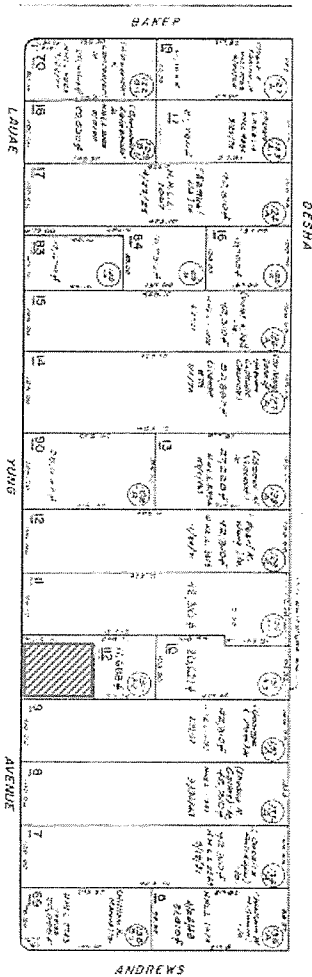
- Living: 1318.0 SQ. FT.
- Carport: 381.1 SQ. FT.
- Storage: 70.0 SQ. FT.
- Entry Slab: 20.0 SQ. FT.
- Rear Porch: 45.4 SQ. FT.

HAWAII COMMUNITY COLLEGE HOME (2020)

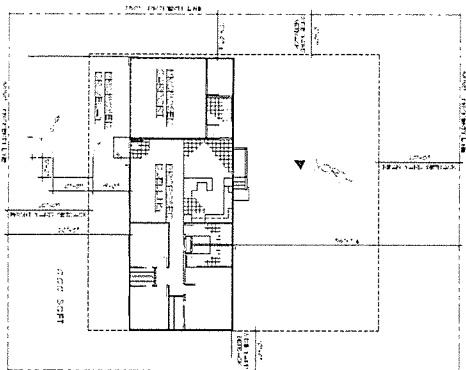
Keaukaha – Lot No. 131-A-1, 371 Lauae Yung Avenue / TMK: (3)2-1-021:111

Price: \$216,122.00

Project Site



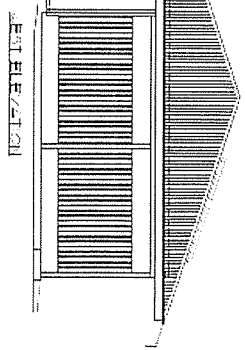
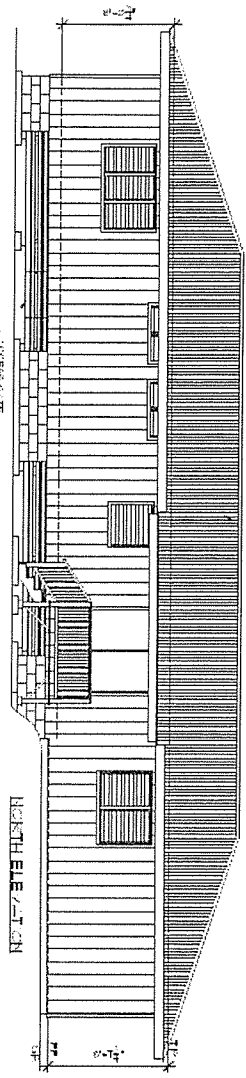
Plot Plan



EXTERIOR ELEVATIONS

Scale 1/8" = 1'0"

26 ga. Corrugated metal roofing



4kw PV Panels

