



HAWAIIAN HOME LANDS
HAWAIIAN HOMES COMMISSION
DEPARTMENT OF HAWAIIAN HOME LANDS

Hawaiian Homes Commission Community Meeting Leeward O`ahu

Waianae, Oahu

Monday December 16, 2019



HAWAIIAN HOME LANDS
HAWAIIAN HOMES COMMISSION
DEPARTMENT OF HAWAIIAN HOME LANDS

AGENDA

WELCOME
INTRODUCTIONS
PLANNING OFFICE UPDATE
LAND DEVELOPMENT DIVISION UPDATE
HOMESTEAD ASSOCIATIONS
OPEN HOUSE



HAWAIIAN HOME LANDS
HAWAIIAN HOMES COMMISSION
DEPARTMENT OF HAWAIIAN HOME LANDS

PRESENTATIONS

WWW.DHHL.HAWAII.GOV/HHC



HAWAIIAN HOME LANDS

HAWAIIAN HOMES COMMISSION

DEPARTMENT OF HAWAIIAN HOME LANDS

PARTNERS

US CENSUS BUREAU

PAPA OLA LOKAHI

DCCA



HAWAIIAN HOME LANDS

HAWAIIAN HOMES COMMISSION
DEPARTMENT OF HAWAIIAN HOME LANDS



Established by Prince Kūhiō & the U.S. Congress
Department of Hawaiian Home Lands



[Home](#) [Divisions ▼](#) [Legislative Briefings](#) [Procurement](#) [Awards](#) [Newsroom ▼](#) [Meeting Announcements](#) [Employment](#)



DEPARTMENT OF HAWAIIAN HOME LANDS

MEETING ANNOUNCEMENT



HHC REGULAR MEETING – O'AHU (DEC. 2019)

[Read More ➔](#)

 **Information for Applicants**

 **Information for Lessees**

 **Hawaiian Homes Commission**

 **Contact Us**



Established by Prince Kūhiō & the U.S. Congress
Department of Hawaiian Home Lands



[Home](#) [Divisions ▼](#) [Legislative Briefings](#) [Procurement](#) [Awards](#) [Newsroom ▼](#) [Meeting Announcements](#) [Employment](#)

[Home](#) » [Contact](#)

CONTACT



HAWAIIAN HOME LANDS
HAWAIIAN HOMES COMMISSION · DEPARTMENT OF HAWAIIAN HOME LANDS

[Join DHHL's Email List](#)

[Homesteader or Applicant Change of Address Form](#)

[Request an Application Forms Packet](#)

[Hale Pono'i Meeting Room Information and Reservations](#)

[Not sure if your contact information with the Department is current?](#)

Contact Center: (808) 620-9500



HAWAIIAN HOME LANDS
HAWAIIAN HOMES COMMISSION
DEPARTMENT OF HAWAIIAN HOME LANDS

Planning Office Update

- Native Hawaiian beneficiaries
- Hawaiian Home Lands Trust (land)
- Plans and Programs



HAWAIIAN HOME LANDS
HAWAIIAN HOMES COMMISSION
DEPARTMENT OF HAWAIIAN HOME LANDS

Land Development Division Oahu Island Project Updates

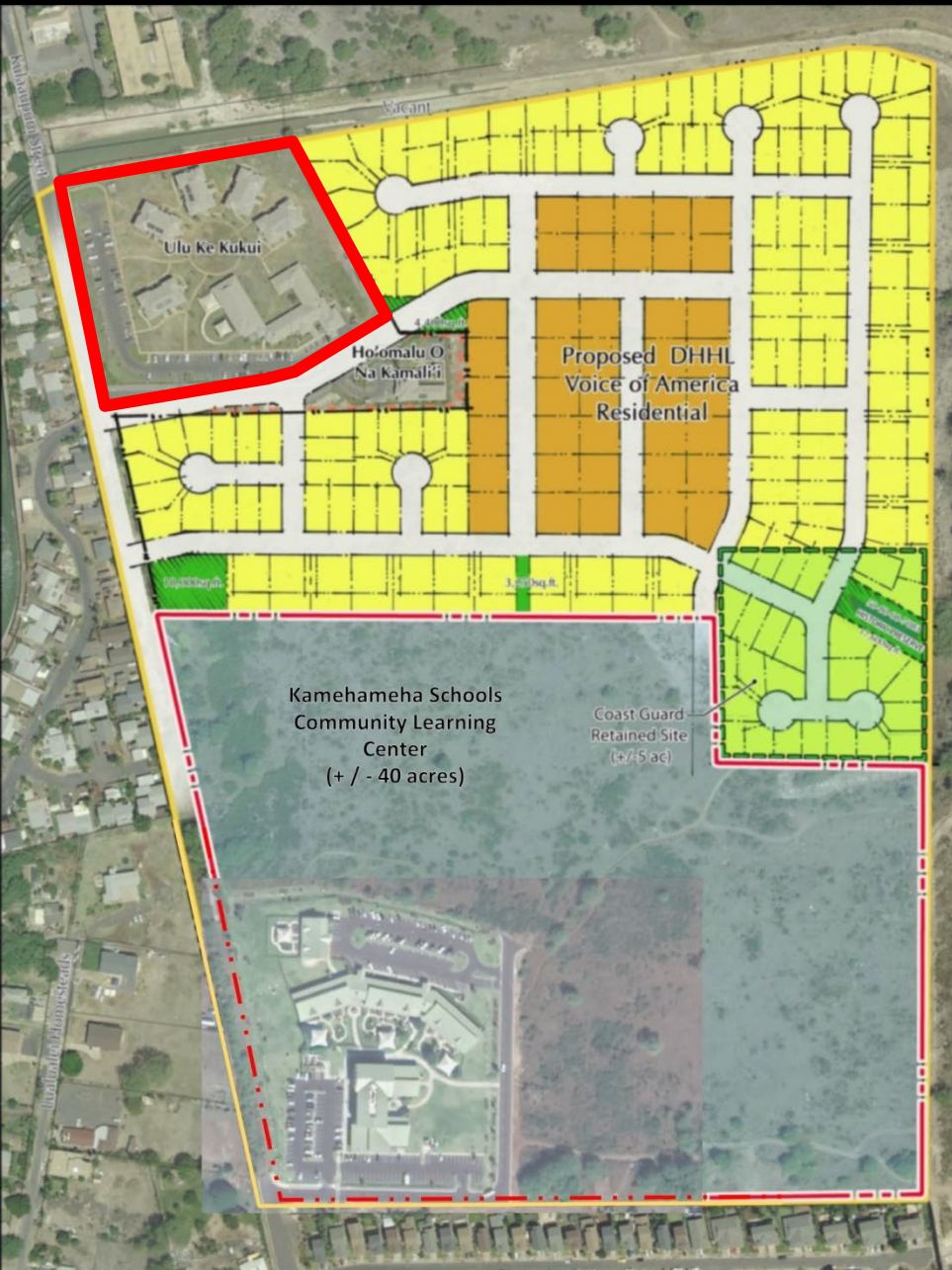


HAWAIIAN HOME LANDS
HAWAIIAN HOMES COMMISSION
DEPARTMENT OF HAWAIIAN HOME LANDS

WEST OAHU PROJECT UPDATES

**Land Development Division
Item E-1 Workshop
Monday, December 16, 2019**

Former Voice of America Property, Mā'ili



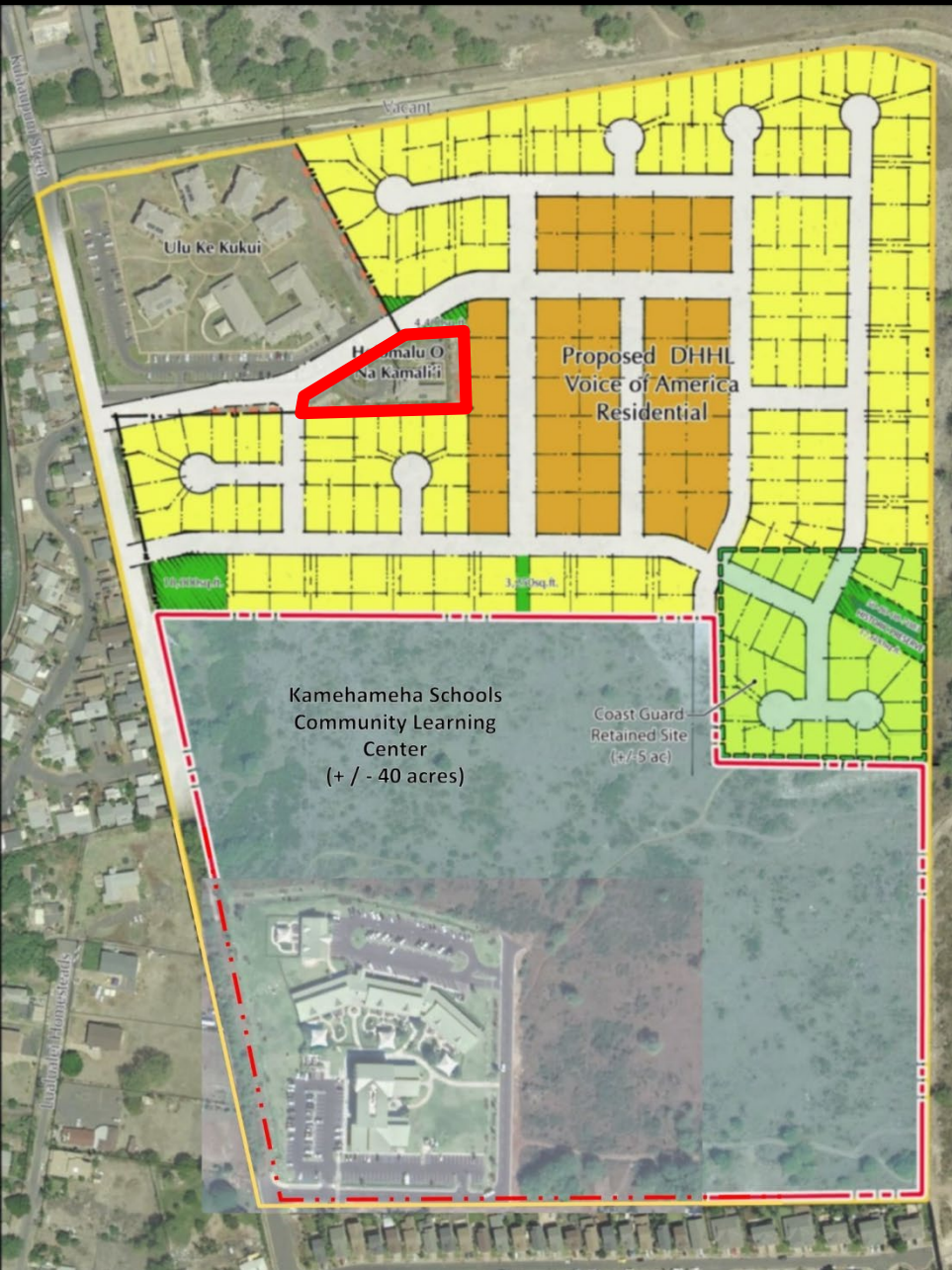
- **Ulu Ke Kukui**

One offer received in response to Request for Proposals to renovate and manage.

Chair approved recommendation to accept offer.

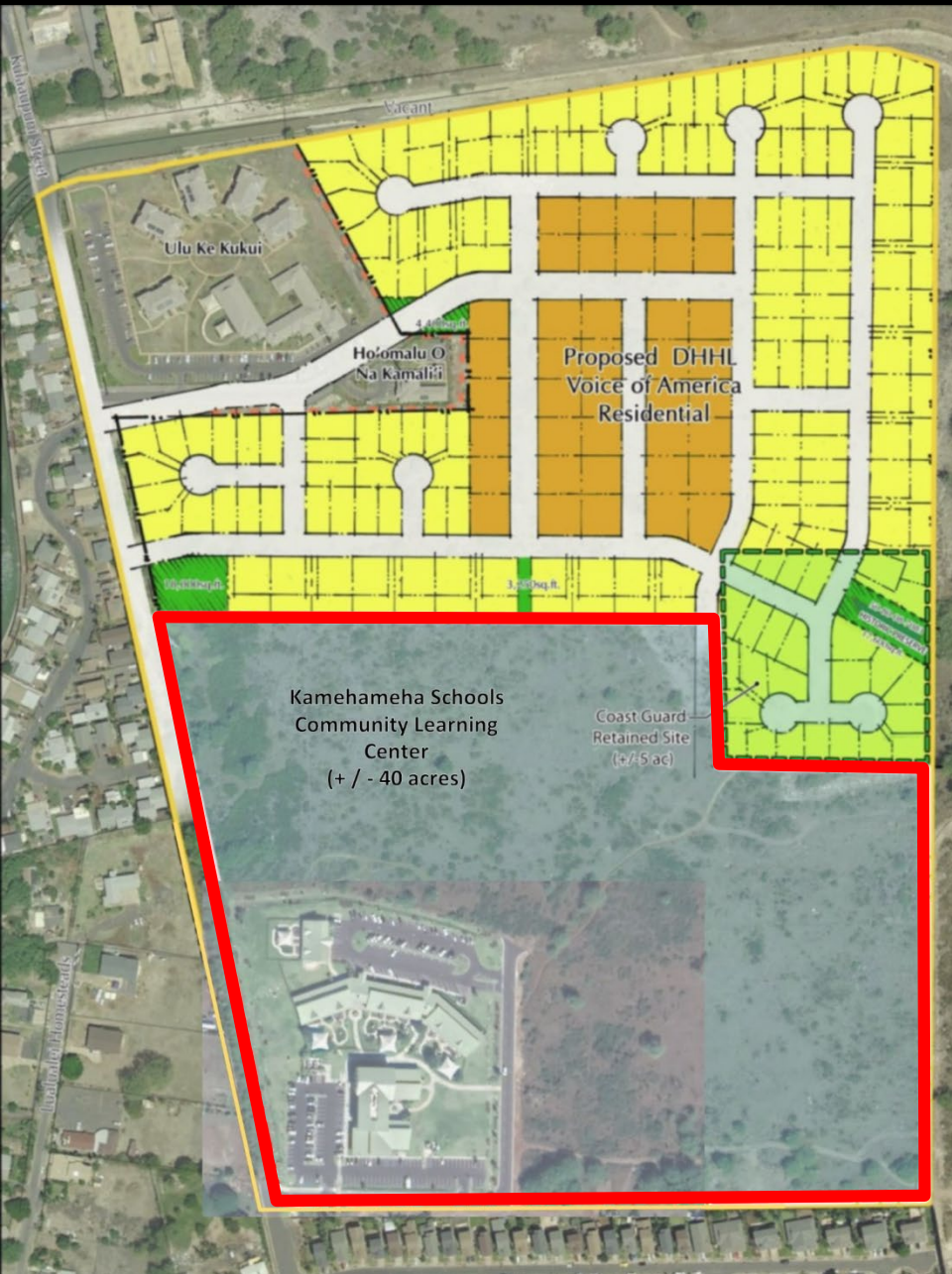
Negotiating development agreement. Developer recommended one-year extension to General Lease to Hawaii Public Housing Authority.

Former Voice of America Property, Mā'ili



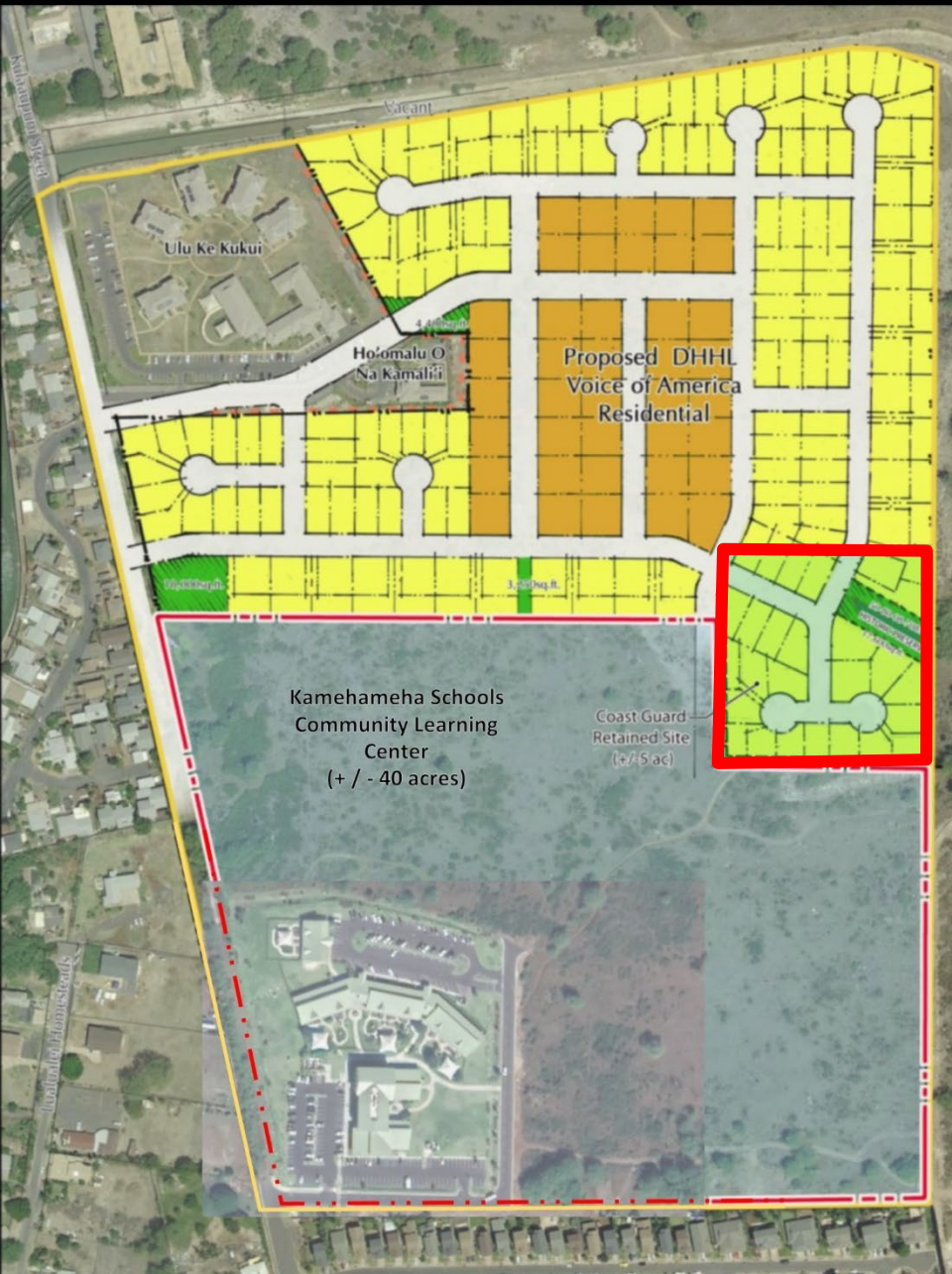
- Ulu Ke Kukui
 - Ho'omalū O Nā Kamali'i
- General Lease to Department of Human Services expires in 2028

Former Voice of America Property, Mā'ili



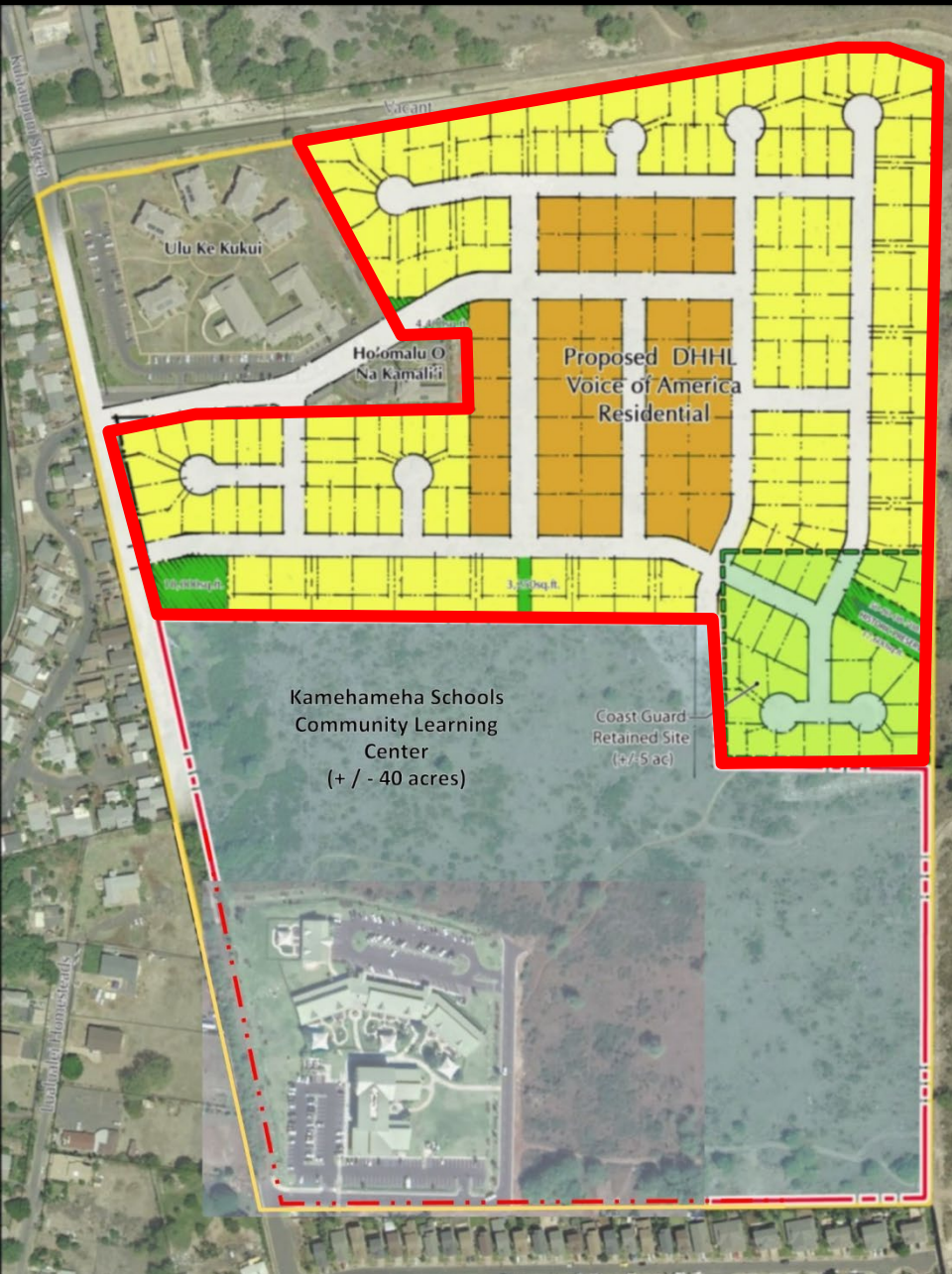
- Ulu Ke Kukui
 - Ho'omalū O Nā Kamali'i
 - Kamehameha Schools Community Learning Center
- General Lease issued in 2012
Negotiating land exchange

Former Voice of America Property, Mā'ili



- Ulu Ke Kukui
- Ho'omalū O Nā Kamali'i
- Kamehameha Schools Community Learning Center
- USCG Clean-up
5-acre site
GSA preparing conveyance document

Former Voice of America Property, Mā'ili



- Ulu Ke Kukui
- Ho'omalū O Nā Kamali'i
- Kamehameha Schools Community Learning Center
- USCG Clean-up
- DHHL Residential Community

Approximately 40 acres

Legislative Appropriations -
\$800,000

Next step: Beneficiary Consultation
and Environmental Assessment
Approximately 250 units

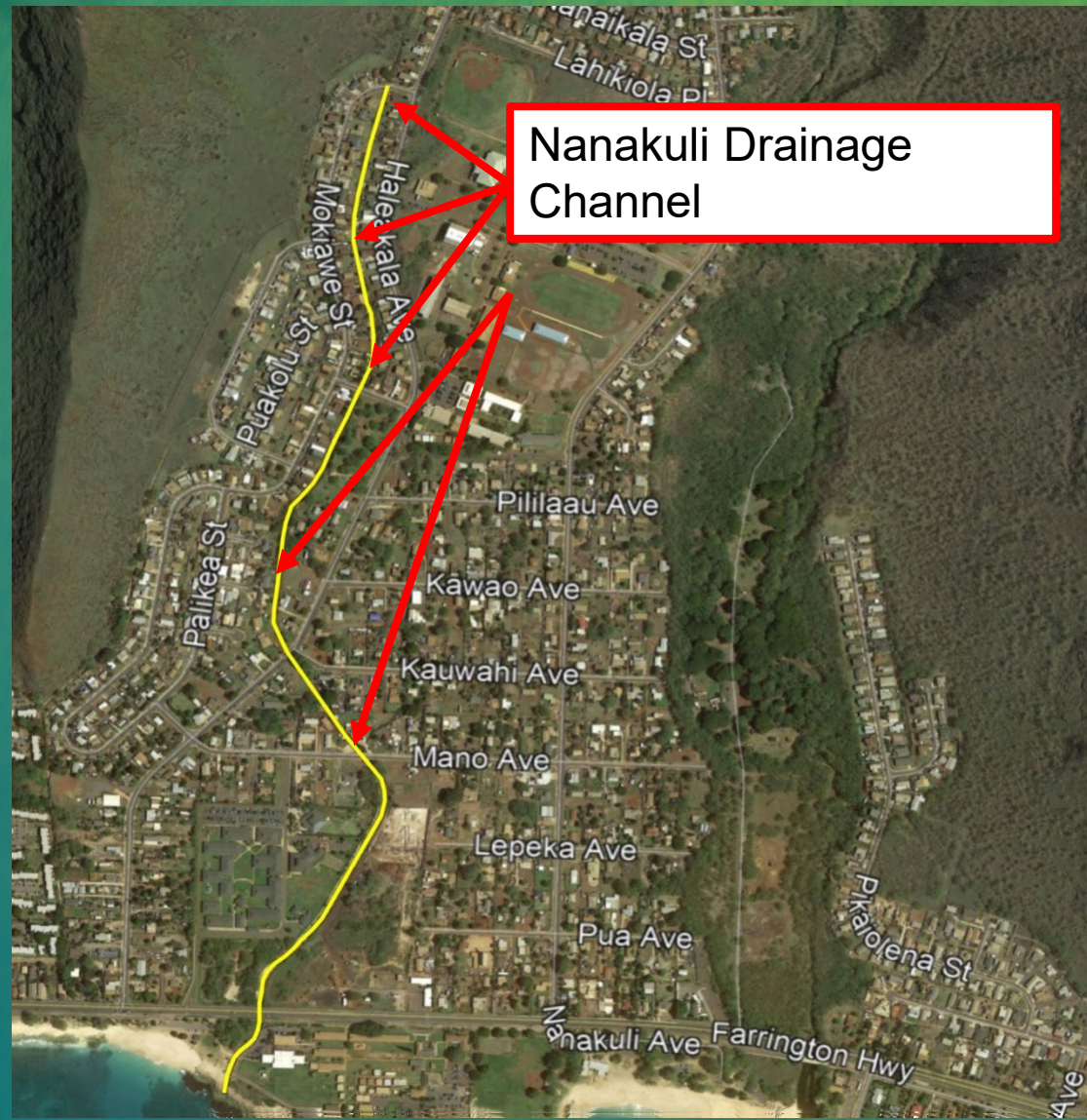
NANAKULI DRAINAGE CHANNEL IMPROVEMENTS

PHASE 1

- Scope: Reline channel walls
- Cost: \$1,300,000.00
- Schedule: Fall 2020

ADDITIONAL PHASES

- Scope: Additional repairs
- Cost: \$2.2 Million required
- Schedule: Subject to funding



NANAKULI SECURITY FENCE



- Installation of Security Fence on the east side of the channel from Farrington Hwy to Lepeka Ave.
- 1,000 linear feet of fence
- Cost Estimate:\$125,000
- Schedule: Mid-2020

NANAKULI TRAFFIC CALMING

Legislative Appropriation:
\$1,000,000

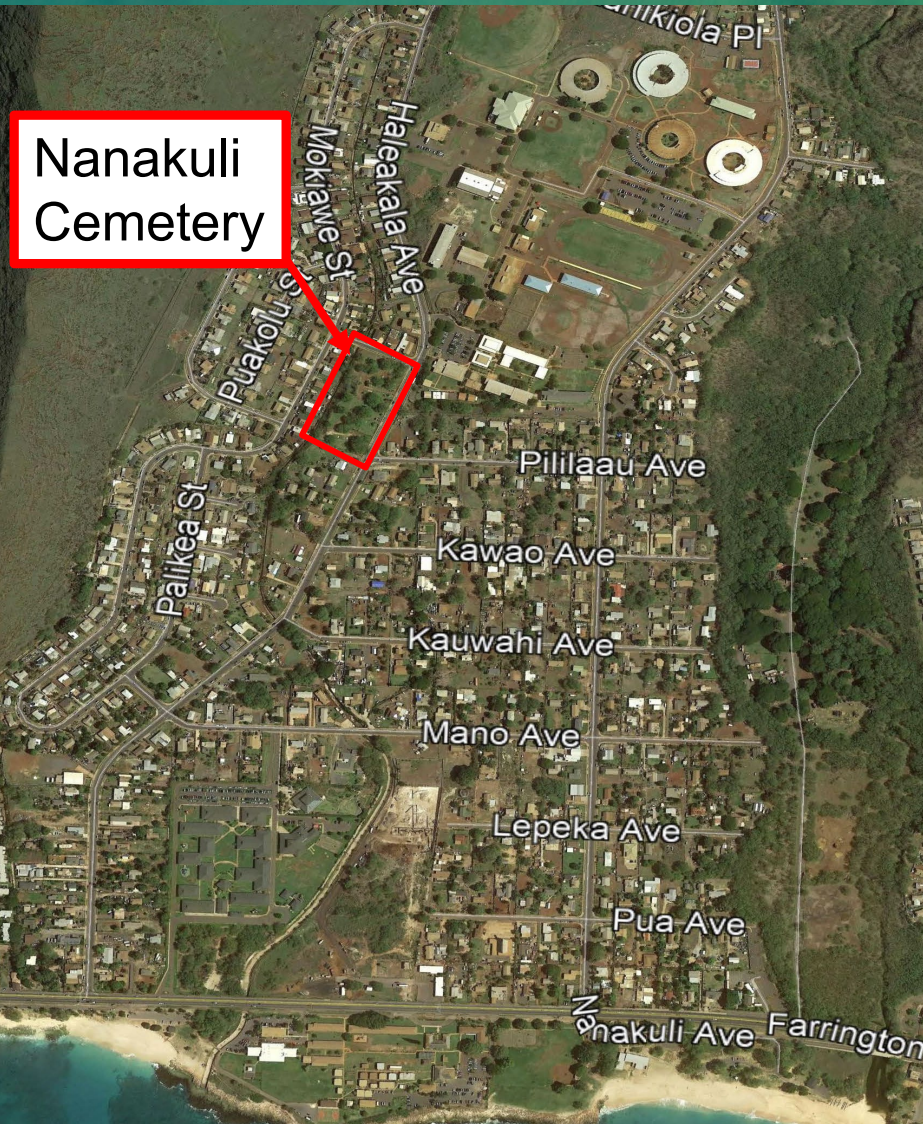
Procure traffic engineering consultant to determine best means of traffic calming, to include speed humps and tables, crosswalk signals, striping and signage.

Locations to include, but not limited to:

- 1. Nanakuli Ave & Pua Ave**
- 2. Haleakala Ave & Mano Ave**
- 3. Nanakuli Ave & Pililaau Ave.**
- 4. Nanakuli Ave & Ilimapapa Ave.**
- 5. Haleakala Ave. & Opuhe St.**
- 6. Haleakala Ave. & Mokiawe St.**
- 7. Haleakala Ave. & Pililaau St.**
- 8. Mano Ave fronting Nanaikapono Elementary School**
- 9. Nanakuli Ave. outside Nanakuli**



NANAKULI CEMETERY REPAIRS



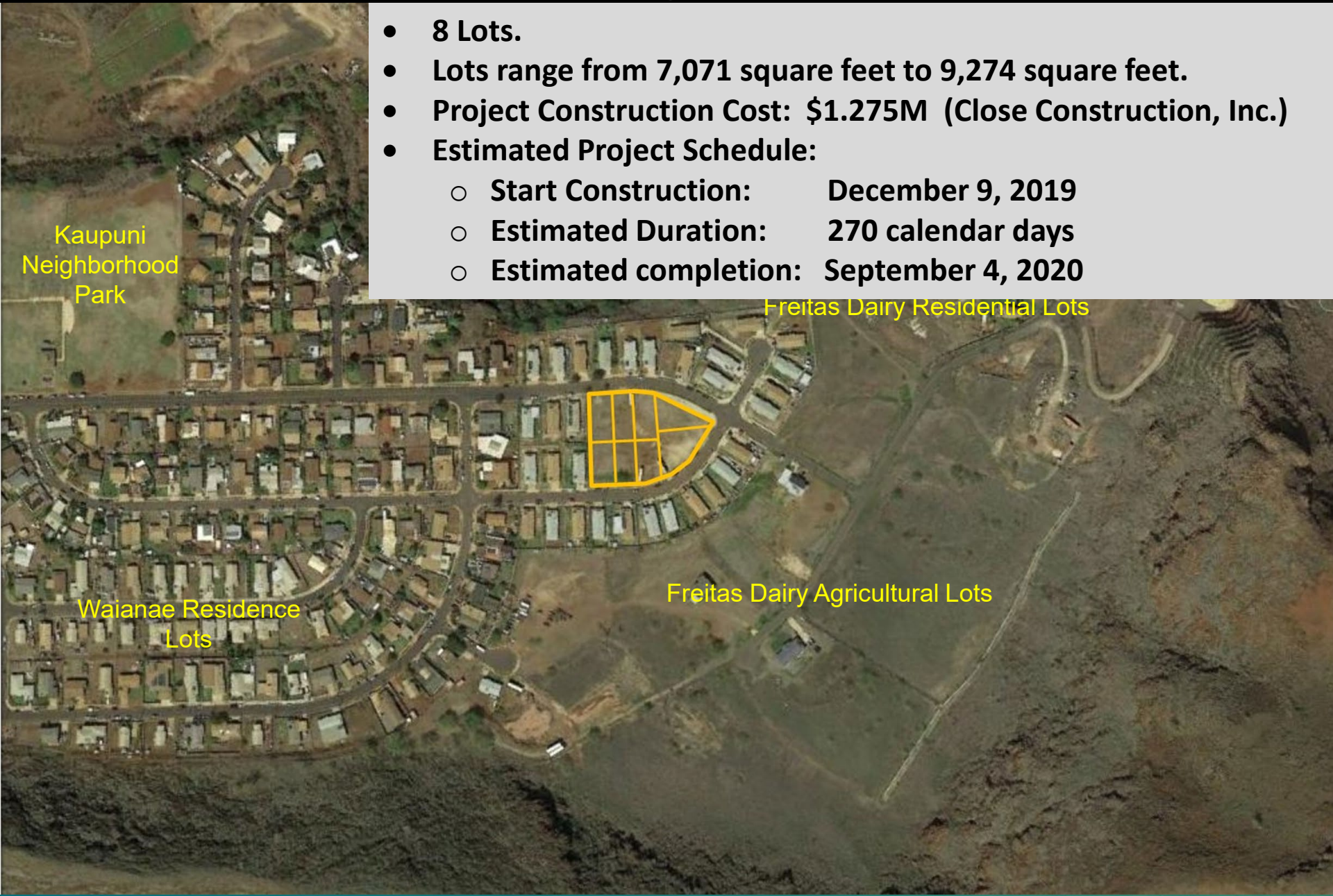
Nanakuli
Cemetery

PROPOSED REPAIRS

- Fencing installation:
1,000 linear feet
- Wall Repair:
700 linear feet
- Remove excess excavated soil
- Repair water line

Waianae Valley, Increment 4

- 8 Lots.
- Lots range from 7,071 square feet to 9,274 square feet.
- Project Construction Cost: \$1.275M (Close Construction, Inc.)
- Estimated Project Schedule:
 - Start Construction: December 9, 2019
 - Estimated Duration: 270 calendar days
 - Estimated completion: September 4, 2020



West Oahu Sewer System Assessment

PURPOSE:

Improve existing sewer collector lines to City and County standards

LOCATIONS:

DHHL Sewerlines in Waianae, Princess Kahanu Estates, and Nanakuli.

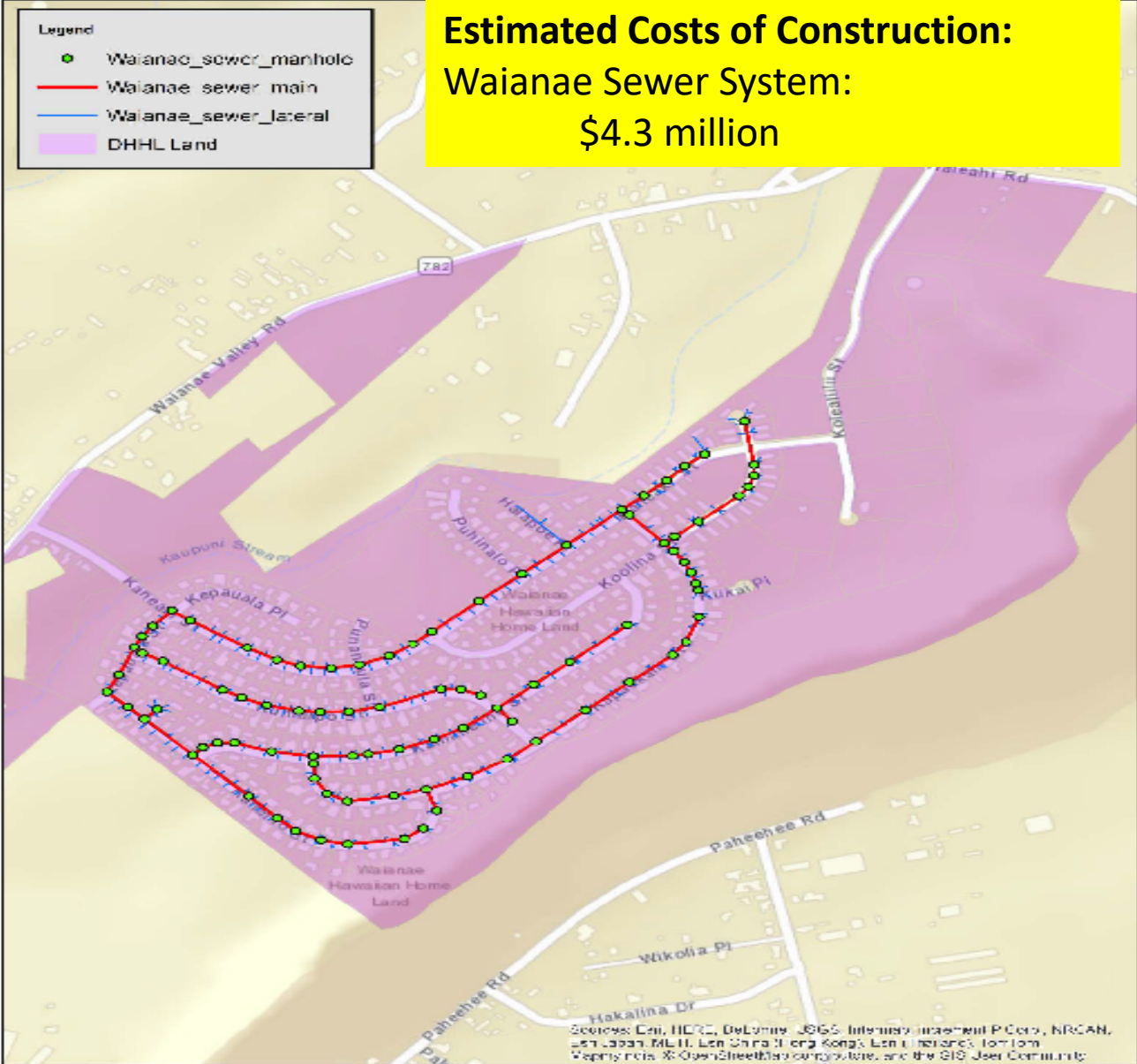
SCOPE OF WORK:

- Replacing sewer lines, manholes and cleanouts
- Reconnecting laterals
- Resurface paving, and performing traffic control.

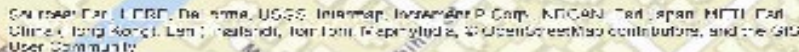
STATUS:

- Video-camera inspection, smoke testing and cleanout survey completed.
- Initiate budget request for Design funding in FY 2021.

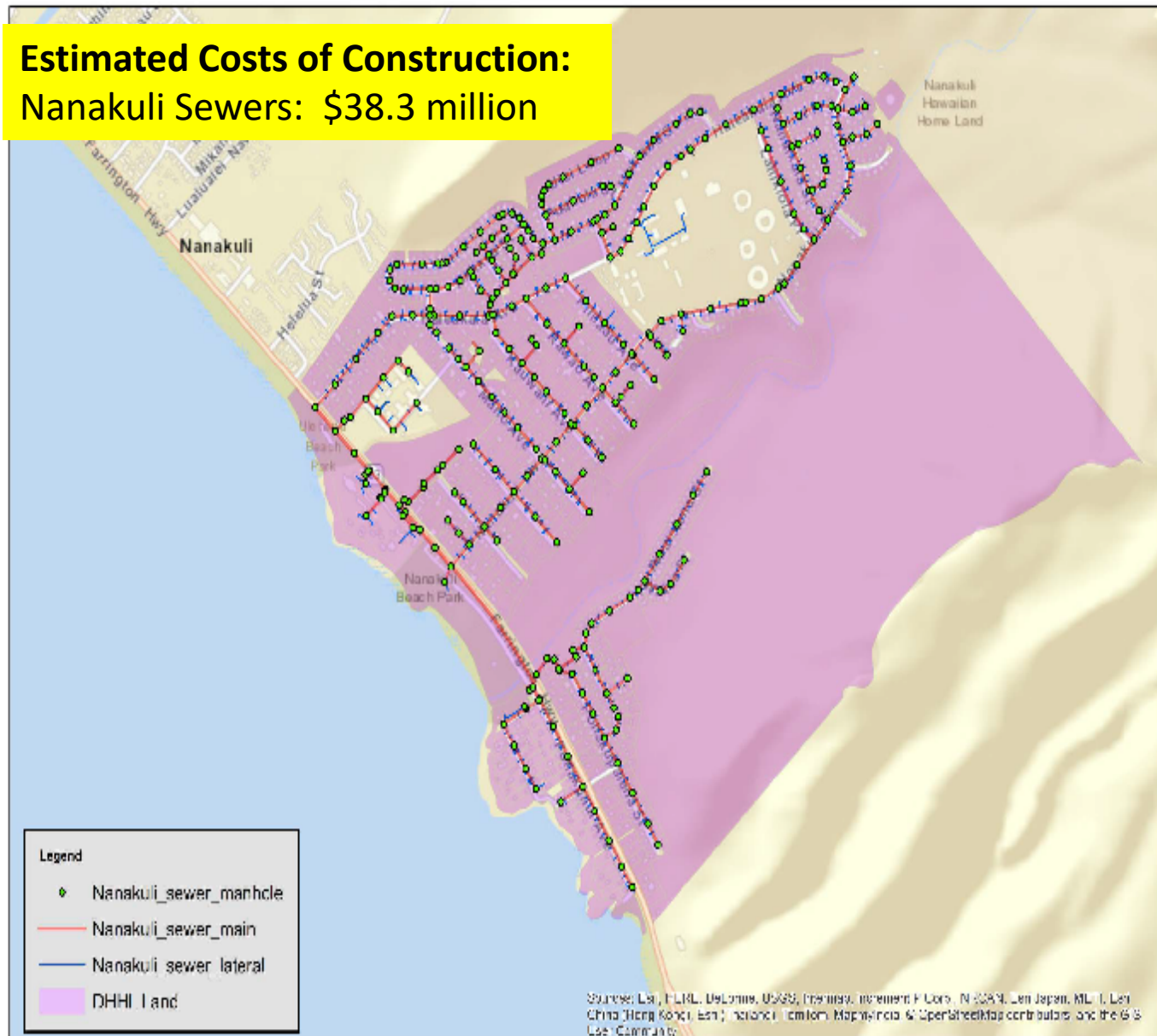
Estimated Costs of Construction:
Waianae Sewer System:
\$4.3 million



PKE System: \$14.3 million



Estimated Costs of Construction:
Nanakuli Sewers: \$38.3 million



Waianae Coast Emergency Access Road

Waianae Coast Emergency Access Road

- **Reassess routes**, conduct research, analyze alternatives.
- DHHL is coordinating our research with the State of Hawaii, Department of Transportation (HDOT).
- Total funding: \$3,000,000





HAWAIIAN HOME LANDS
HAWAIIAN HOMES COMMISSION
DEPARTMENT OF HAWAIIAN HOME LANDS

OPEN HOUSE

Meet DHHL Staff