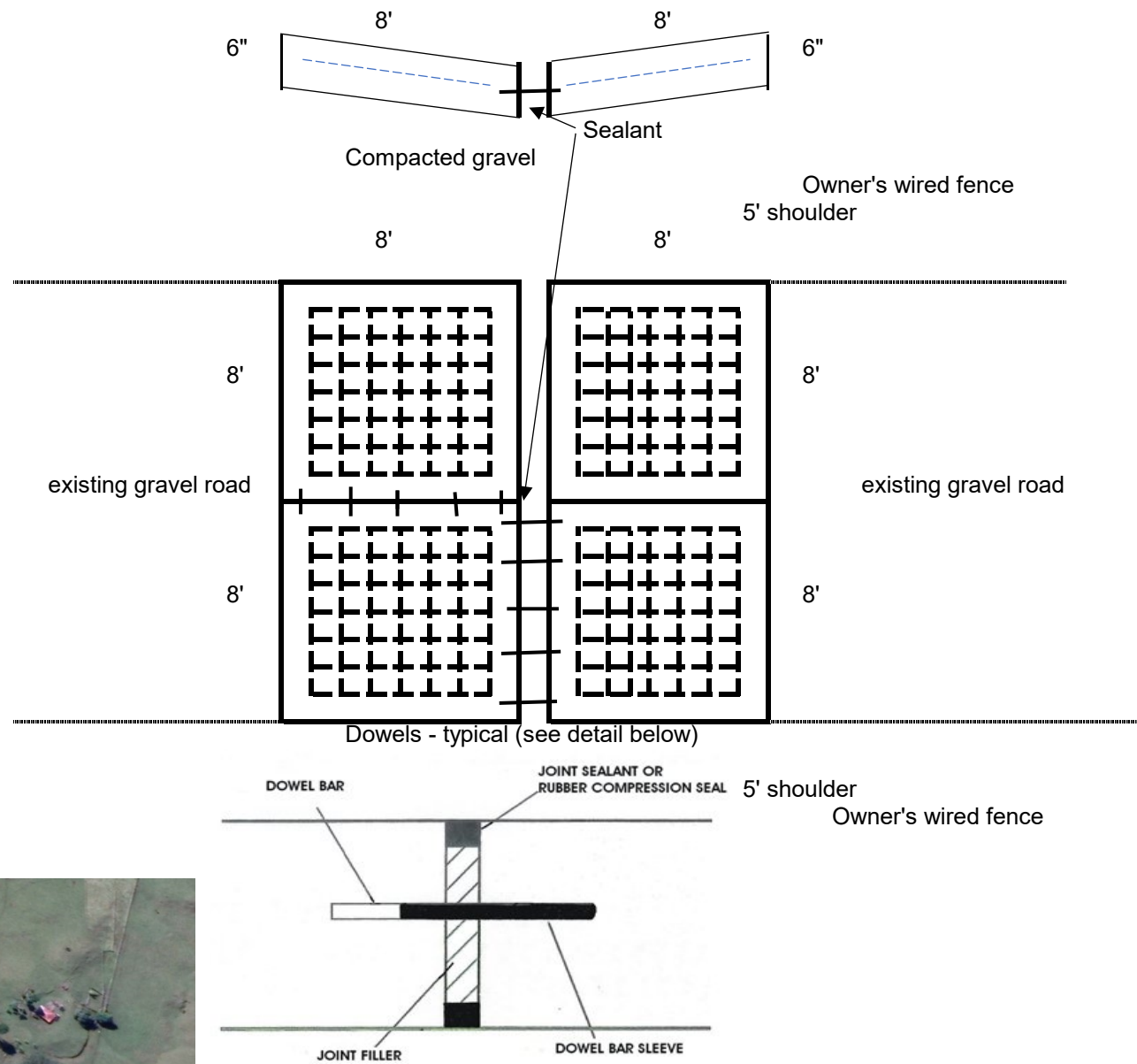
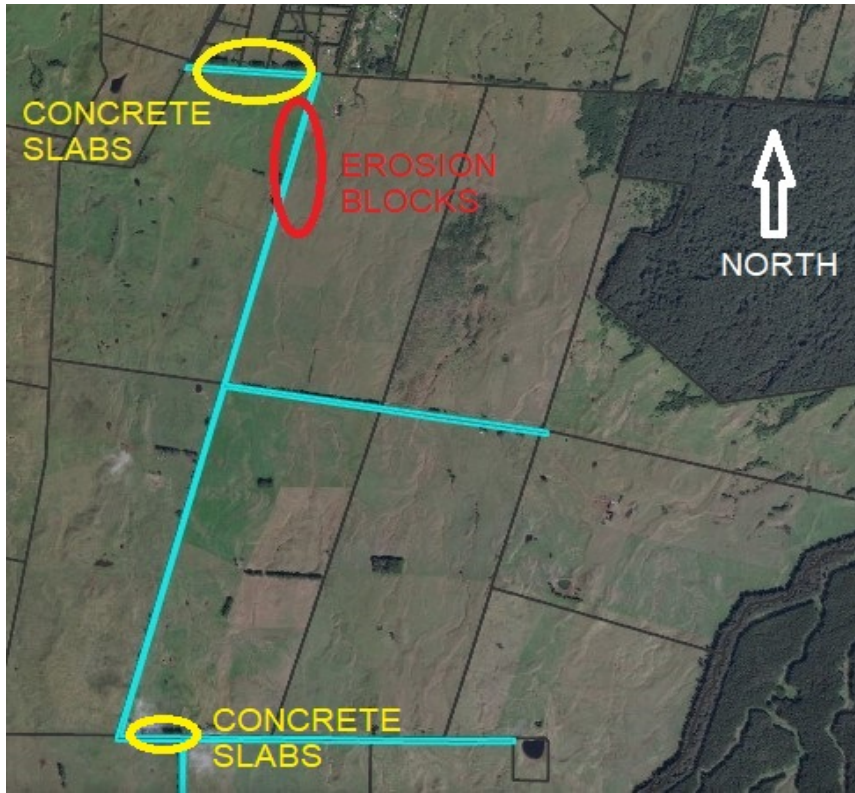


**STATE OF HAWAII
DEPARTMENT OF HAWAIIAN HOME LANDS
PUNONO ROAD IMPROVEMENTS
IFB-20-HHL-006**



NOTES:

- Concrete minimum 3000 psi, cured before transport
- Prep gravel bed to minimum 95% compaction
- No. 5 (5/8") rebar mat with minimum 3" clearance from edge
- Insert dowels 8" apart each way with epoxy
- Add a butyl sealant between each panel
- Scour lines cross top section 1/2" deep 1" apart
- Provide for 4 locations along road as shown on map
- Provide BMP's as required, no work in inclement weather



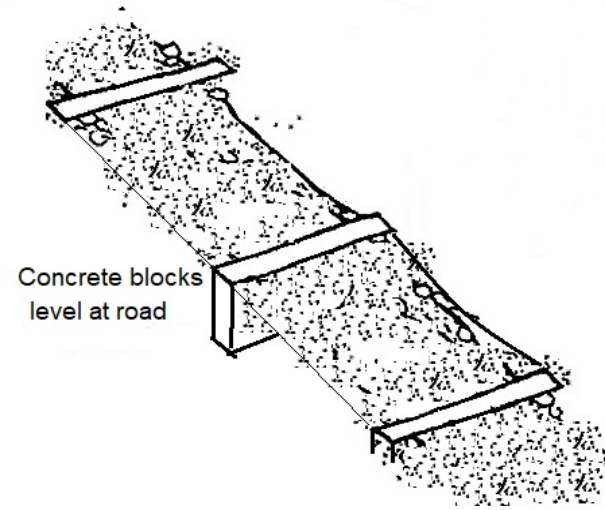
STATE OF HAWAII
DEPARTMENT OF HAWAIIAN HOME LANDS

PUNONO ROAD IMPROVEMENTS
NIENIE PASTORAL LOTS
HAMAKUA, ISLAND OF HAWAII
TMK (3) 4-6-012;024

IFB No.: IFB - 20 - HHL - 006



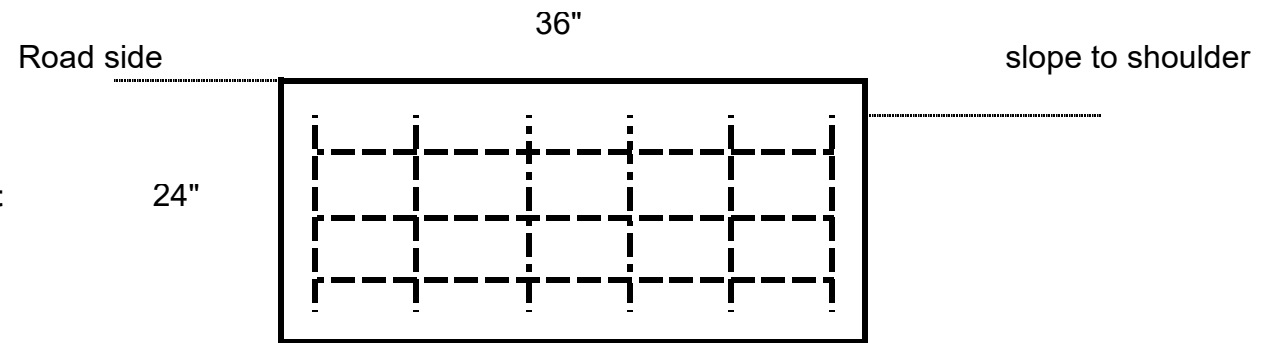
Looking mauka on Punono Road



Looking makai on Punono Road

NOTES:

- Concrete minimum 3000 psi, cured before transport
- Prep gravel bed to minimum 95% compaction
- No. 5 (5/8") rebar mat with minimum 3" clearance from edge
- Rounded edges around exposed top surface
- Provide 10 blocks for installation, spaced approx. 100 feet apart



EROSION BLOCK

STATE OF HAWAII DEPARTMENT OF HAWAIIAN HOME LANDS
PUNONO ROAD IMPROVEMENTS NIENIE PASTORAL LOTS HAMAKUA, ISLAND OF HAWAII TMK (3) 4-6-012;024
IFB No.: IFB - 20 - HHL - 006