



HAWAIIAN HOME LANDS
HAWAIIAN HOMES COMMISSION
DEPARTMENT OF HAWAIIAN HOME LANDS

Planning Office Update

KAUA'I ISLAND PLAN

May 2004

Kaua'i

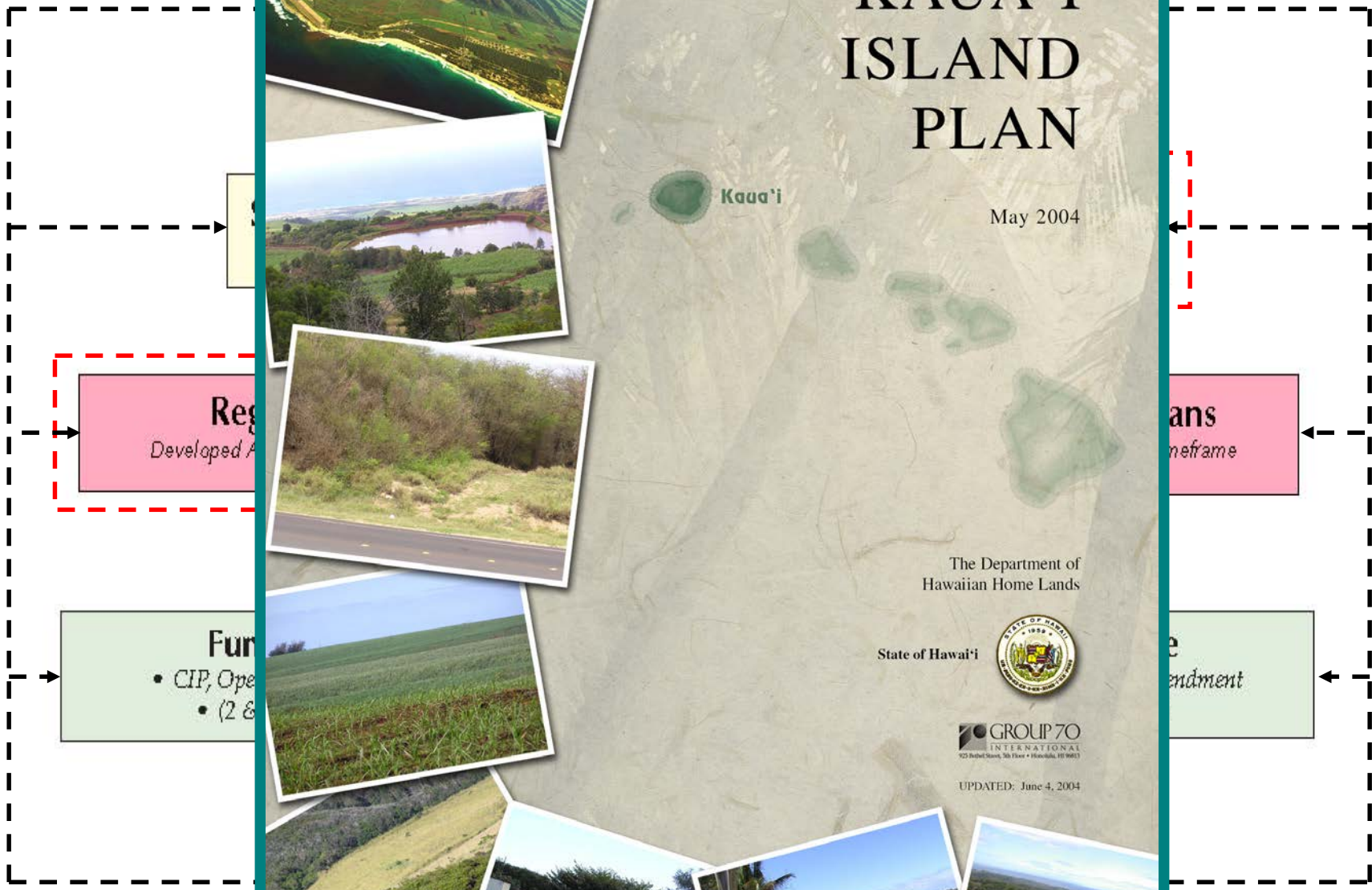
The Department of
Hawaiian Home Lands

State of Hawai'i



GROUP 70
INTERNATIONAL
925 Bedford Street, 5th Floor • Honolulu, HI 96813

UPDATED: June 4, 2004



DHHL P

WAILUA



REGIONAL PLAN

December 2009



Kauai Regional Plans

ANAHOLA

KAMALOMALO'O, ANAHOLA, MOLOA'A



REGIONAL PLAN

June 2010



WEST KAUA'I

(Waimea, Kekaha, Hanapēpē)



REGIONAL PLAN

February 2011



Anahola Town Center Plan 2009

ANAHOLA Town Center



Community-Based Conceptual Land Use Plan

July 9, 2009



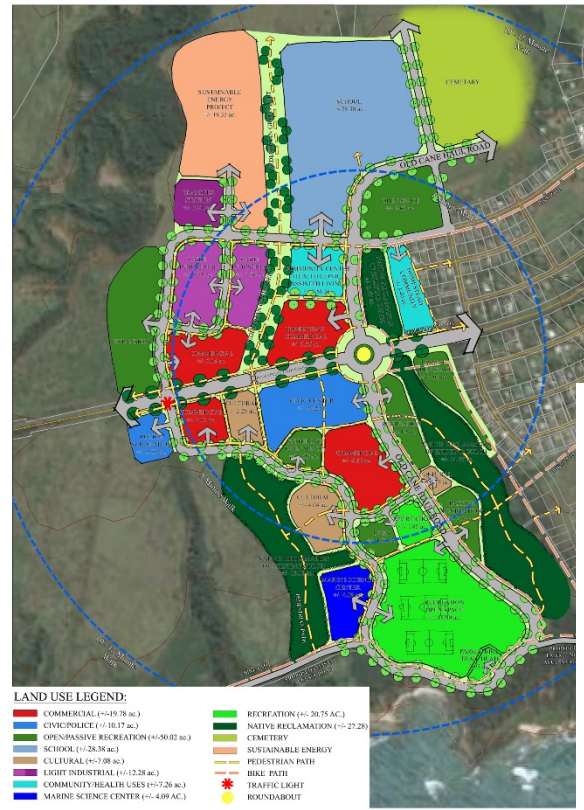
DEPARTMENT OF HAWAIIAN HOME LANDS
BANDEROLTA CONSULTANTS



DEPARTMENT OF HAWAIIAN HOME LANDS



PARK ASSOCIATES, INC.



DHHL ANAHOLA TOWN CENTER

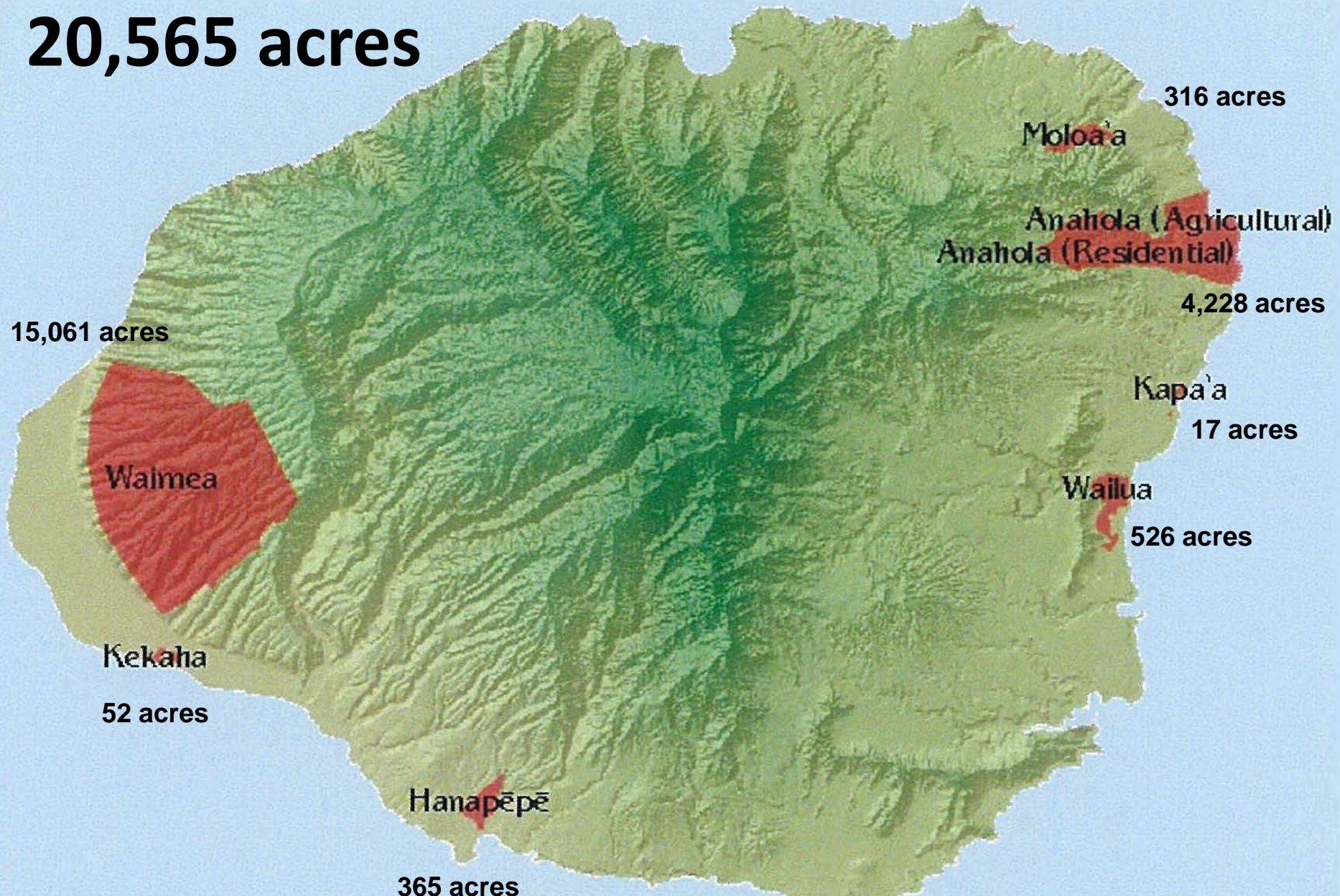
MAY 18, 2009



May 18, 2009

Kaua'i 'Āina Ho'opulapula

20,565 acres



Kaua'i Beneficiaries

Type	Lessees	Applications*
Residential	697	1,677
Agricultural	46	2,225
Pastoral	1	325
Totals	744	4,227

As of August 30, 2019

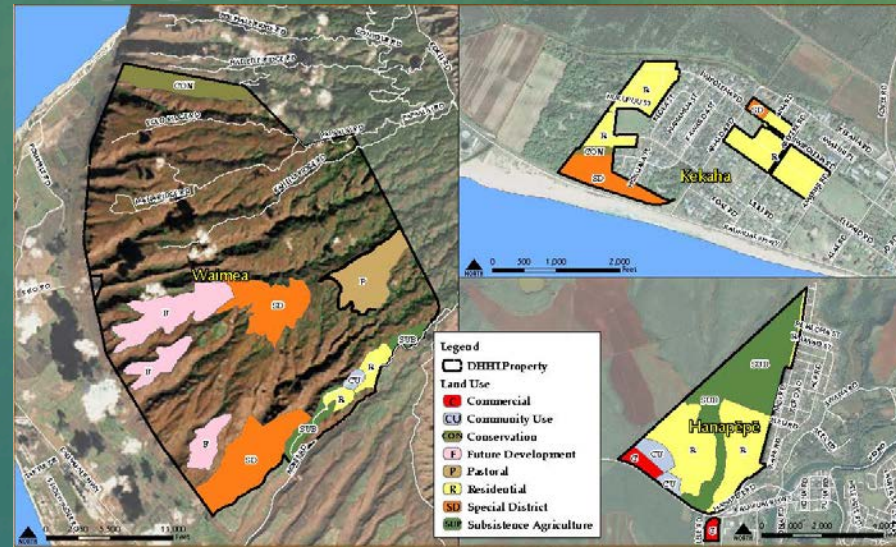
**Area and Islandwide*

Kaua'i Island Plan Priorities

- 1. Residential Lots in Wailua (231 lots)**
- 2. Residential Lots in Hanapēpē (40 lots)**
- 3. Residential Lots in Anahola/
Kamalomalo'o (350 lots)**

West Kaua'i Regional Plan Priority Projects

1. Develop Agricultural & Water Plan (Pu'u 'Ōpae)
2. Develop a Multi-purpose, Evacuation & Education Center/ Shelter
3. Support Development of the Kekaha Enterprise Center
4. Develop Renewable Energy Projects Compatible with Agriculture
5. Develop Agricultural Uses for Hanapepe Farm Lots/Lease Areas



Hanapēpē Homestead Master Plan & Env'tal Assessment

Project Objectives:

1. Provide housing to DHHL beneficiaries on wait list
2. Create a thriving rural homestead community
3. Honor cultural identity & sense of place through design elements & solutions that reflect unique context & character of Hanapēpē & west side

Beneficiary Outreach:

- Lessee Meeting Dec. 2018
- Kaua'i Applicant Meeting #1 July 2019
- Community Meeting #1 Sept. 2019
- Applicant Meeting #2 Nov. 2019

Project Area Map

Project Size: 365 acres



The 2004 DHHL Kaua'i Island Plan identifies land uses for the Hanapēpē Homestead site.

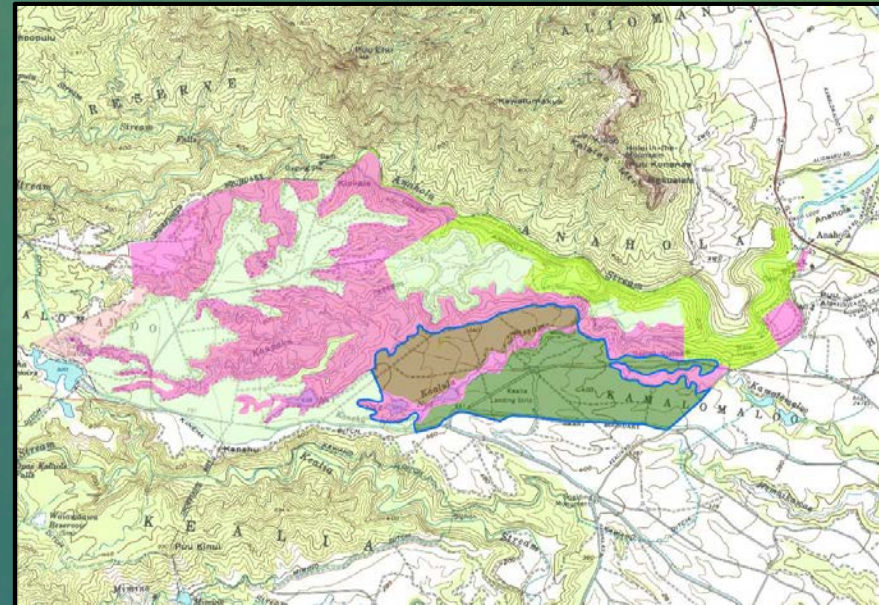
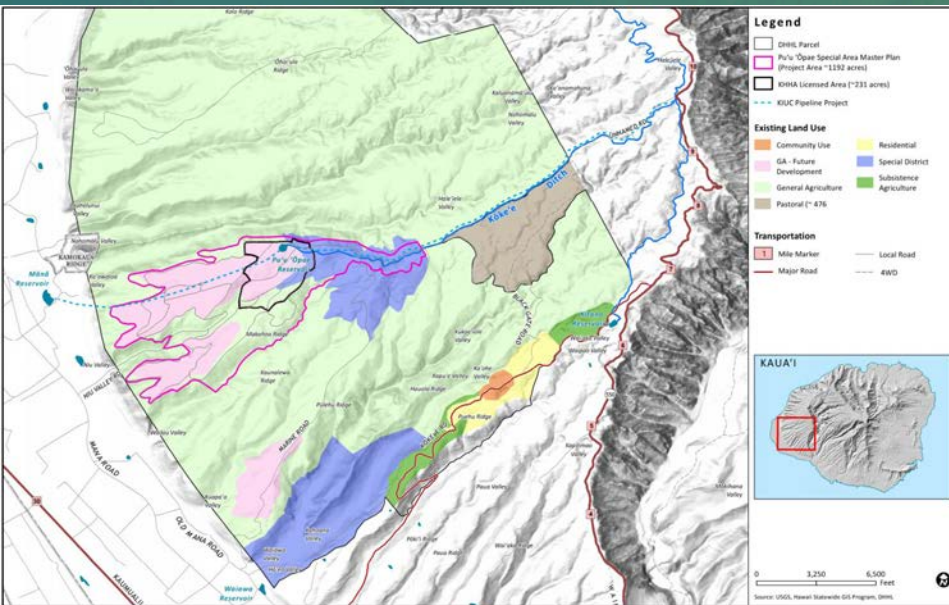
Pu'u 'Ōpae & Anahola Kuleana Lots Homestead Settlement Plans

Pu'u 'Ōpae:

- Existing 20-year license for 231 acres to KKHA
- DHHL looking at providing kuleana lots outside licensed area

Anahola:

- 275 acres for subsistence agriculture and pastoral kuleana lots
- Need albizia trees removed and roads improved



Kuleana Homesteading Process (HAR § 10-3-30)

- Develop a plan for settlement of designated tract
- Participate as active member in kuleana homestead association to develop & comply with association's rules & agreements
- Accept lot in its "as is" condition (access provided)
- Participate in maintenance of right-of-way to kuleana homestead tract & lots