



GREEN ENERGY TEAM APPLICATION FOR A RIGHT OF ENTRY TO REMOVE ALBIZIA TREES

OVERVIEW

- Introduction
- Albizia logging
- Location
- Impact of the proposed activity and mitigation measures
- Benefits for both parties

INTRODUCTION

- Green Energy Team operates a 7.5MW renewable energy plant in Koloa, Kauai.
- Conventional thermal plant using wood as a fuel to create steam in a boiler.
- 12.5% of Kauai's energy is produced by Green Energy Team since 2016.
- 24/7 operations
- Proven reliability
- Solid forestry and power plant team made the venture a success



- 4,500 acres of albizia cleared on Kauai
 - Agribusiness Development Corporation (Kalepa)
 - Grove Farm (Kilohana, Haiku and Waita)
 - E.A. Knudsen Trust (Koloa)
- 2,600 acres of non invasive trees planted to date, 900 acres to go.
- Long term fuel supply plan: harvest 700 acres of plantations per year on a 5 year rotation.



ALBIZIA LOGGING

- What is done:
 - Only above ground biomass
 - Removal of stem and branches
 - Small litter caused by operations remains in field
 - Stumps remain in field
- How it is done:
 - Machine felling up to 100 inches, hand felling for oversized trees
 - Skidding to landings
 - On site chipping in large walking floor trailers
 - Haul to power plant with conventional trucks

- Timeline
 - Harvest: 2 to 3 acres per day
 - Drying time: 8 weeks more or less
 - Chipping: 2,000 cubic yard a day more or less









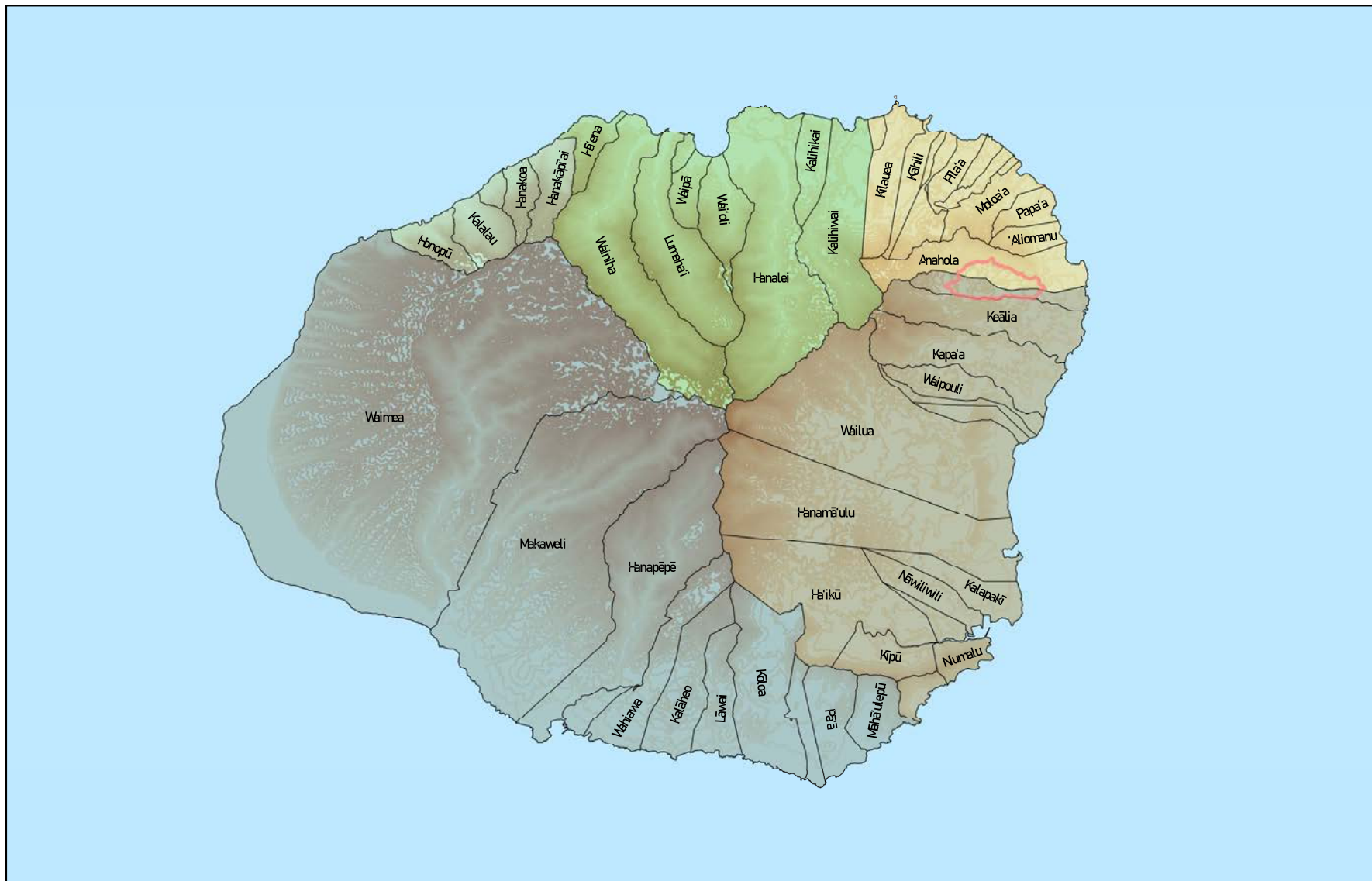






Location

- Location:
 - Kamalomalo and Anahola, East Kaua'i.
 - Puna and Ko'olau Moku.
 - Kamalomalo and Anahola ahupua'a.
- Land use:
 - SLUC: agriculture
 - Kaua'i General Plan: agriculture
 - DHHL Land Utilization Plan: pastoral, ag and community use
- Past and existing uses

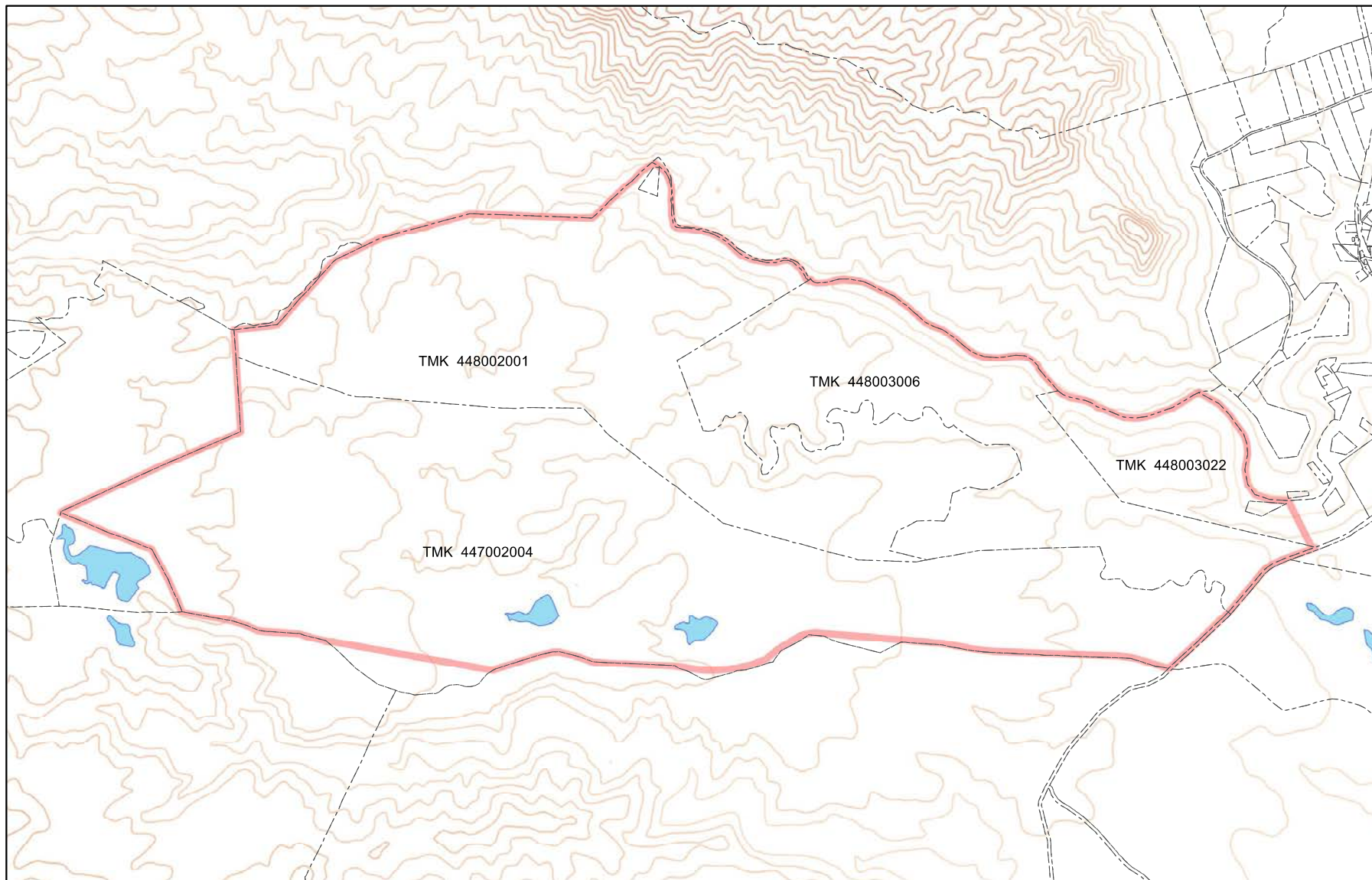


Legend

ct Property



Exhibit A-1: Location of Subject Property



Legend



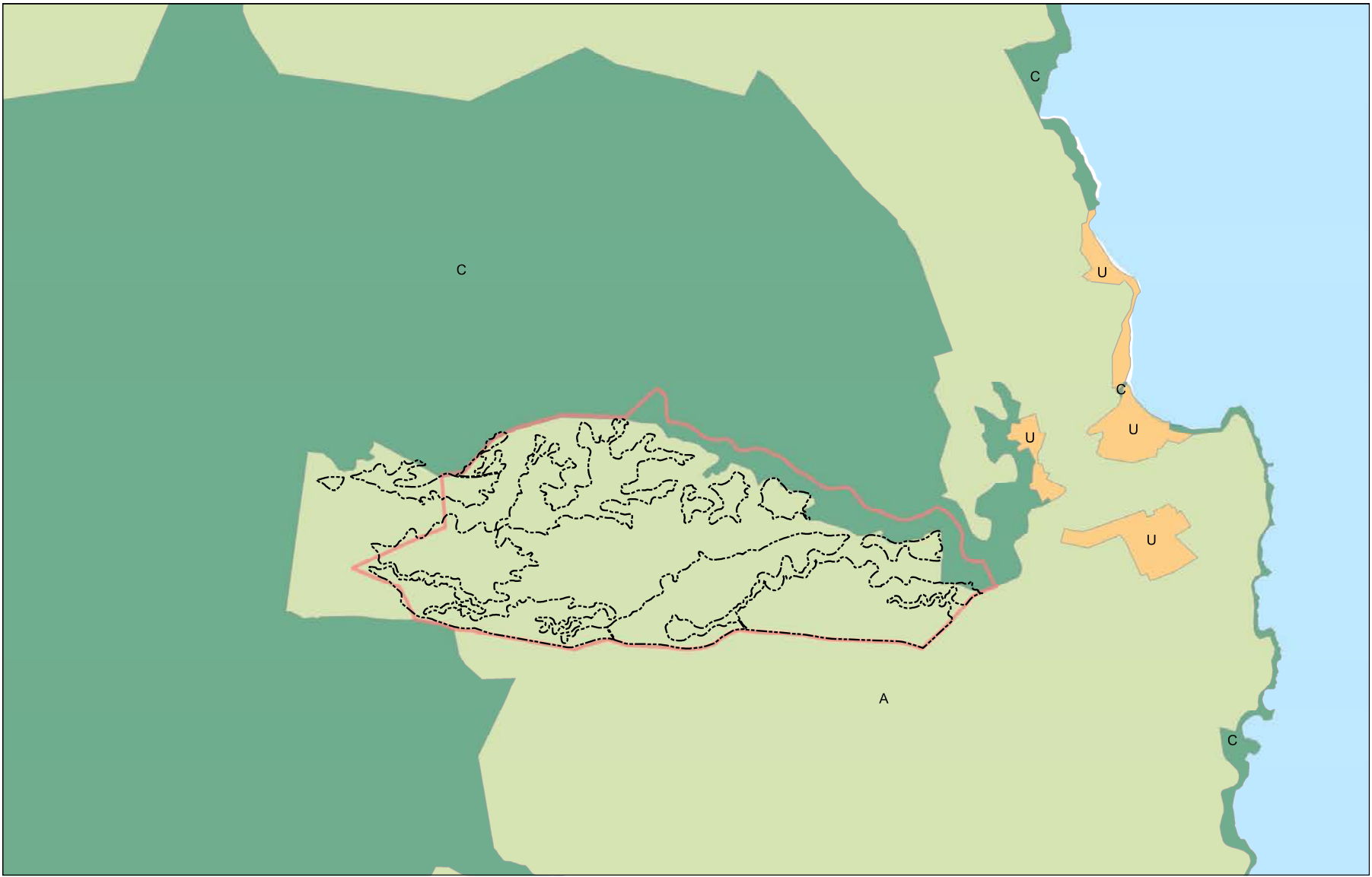
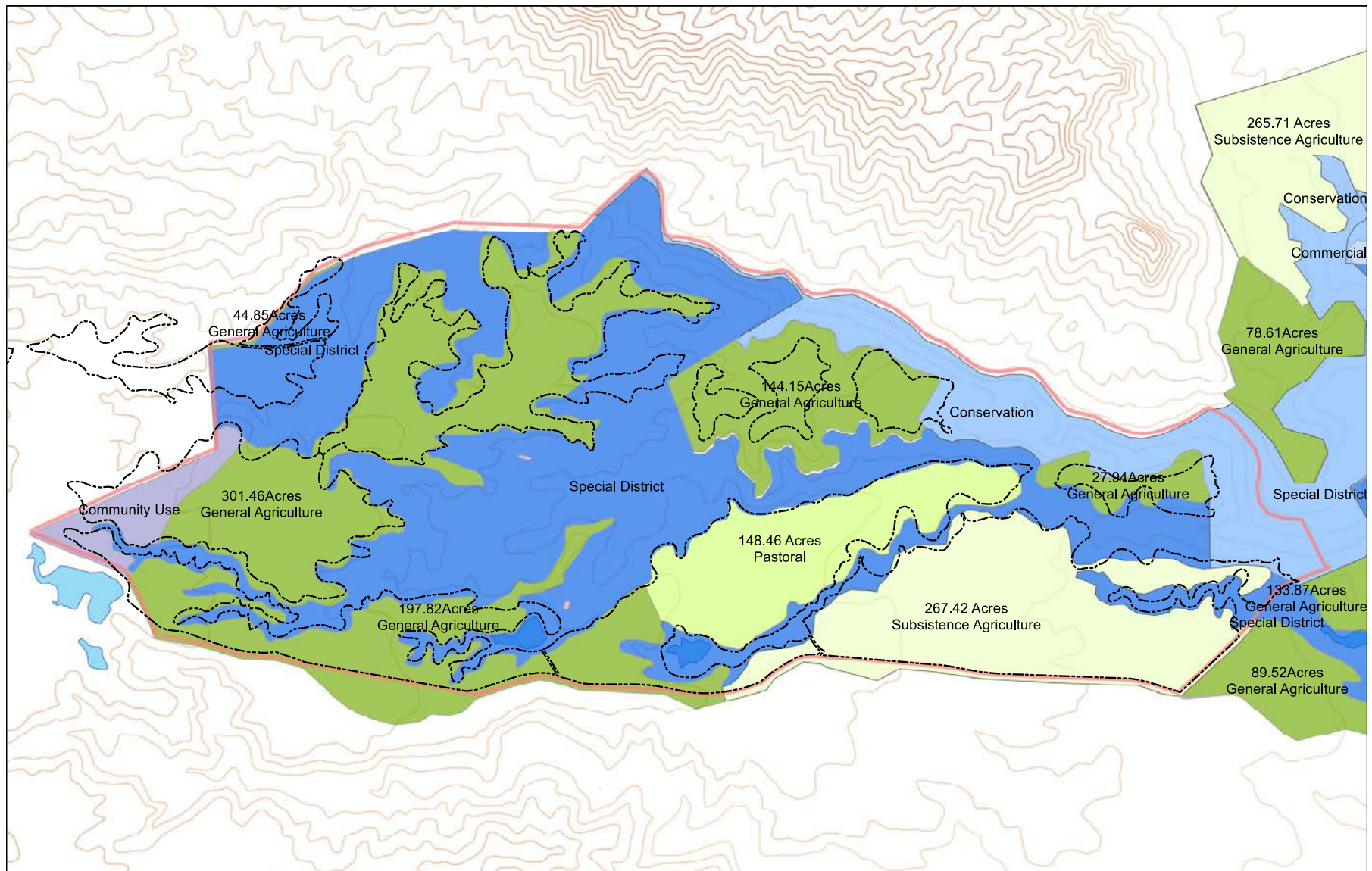
-  Tax Map Keys
-  Subject Property



Exhibit A-2: Tax Map of Subject Property






B-3: DHHL LUP Map



Legend

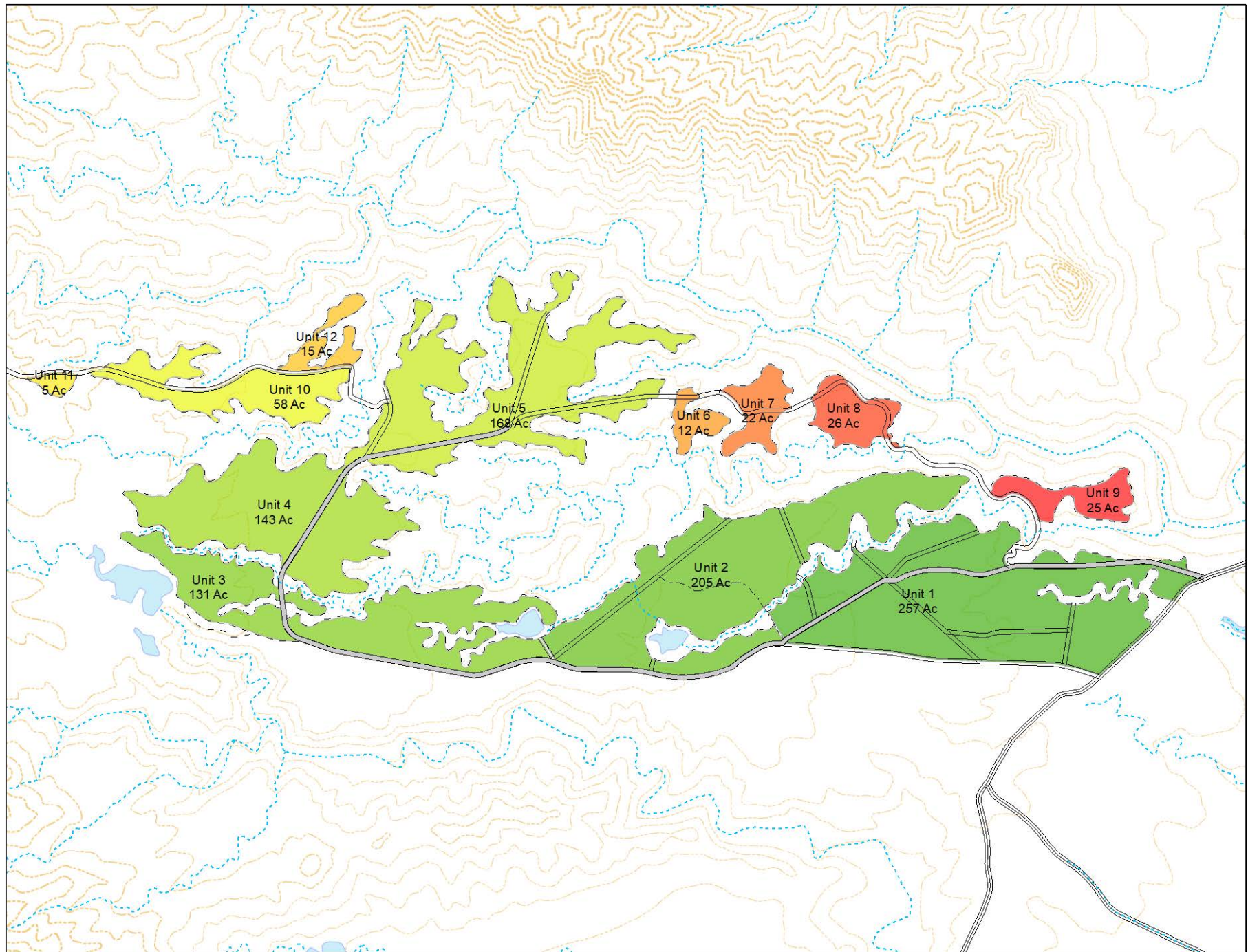
 Subject Property

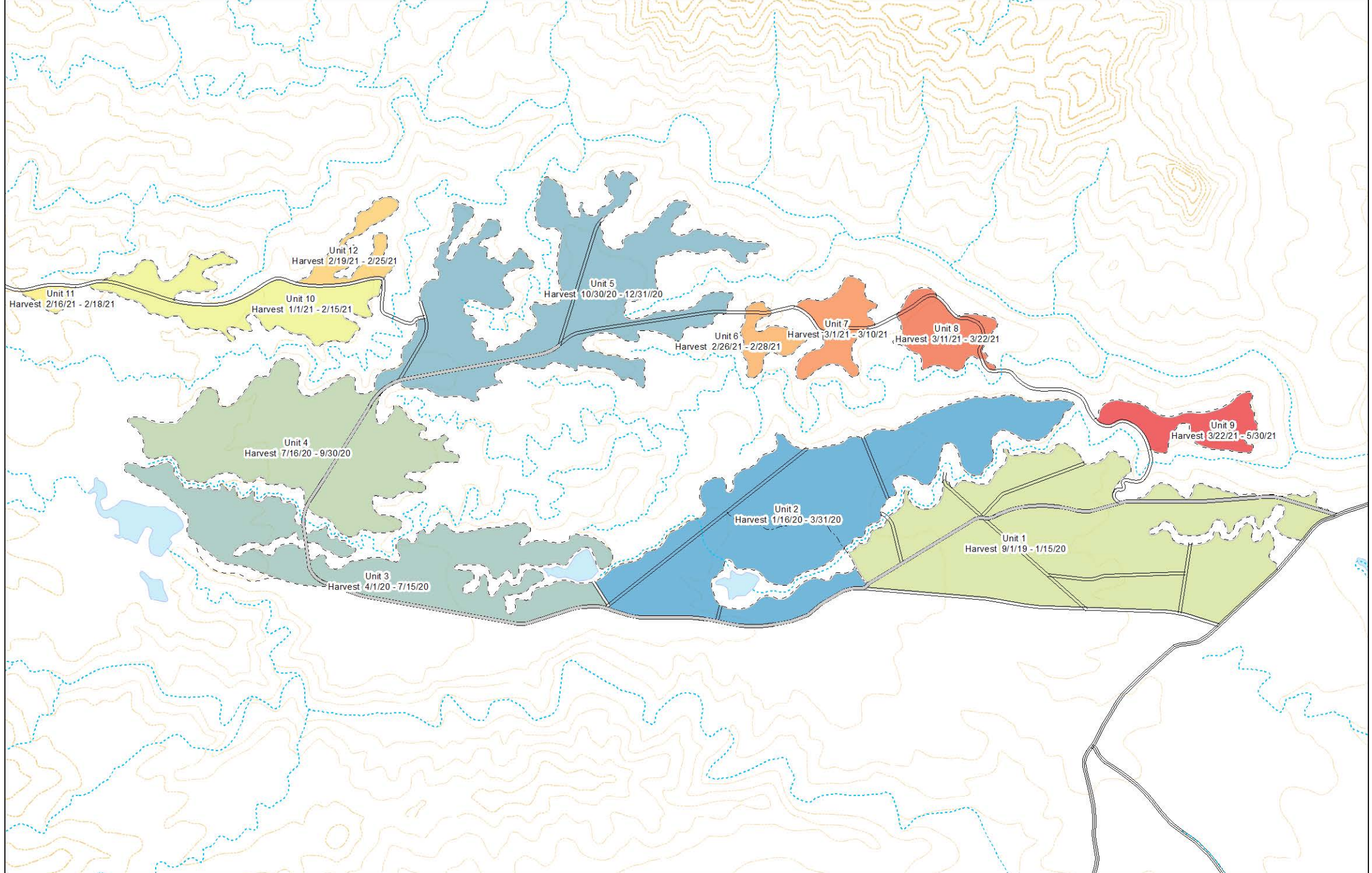


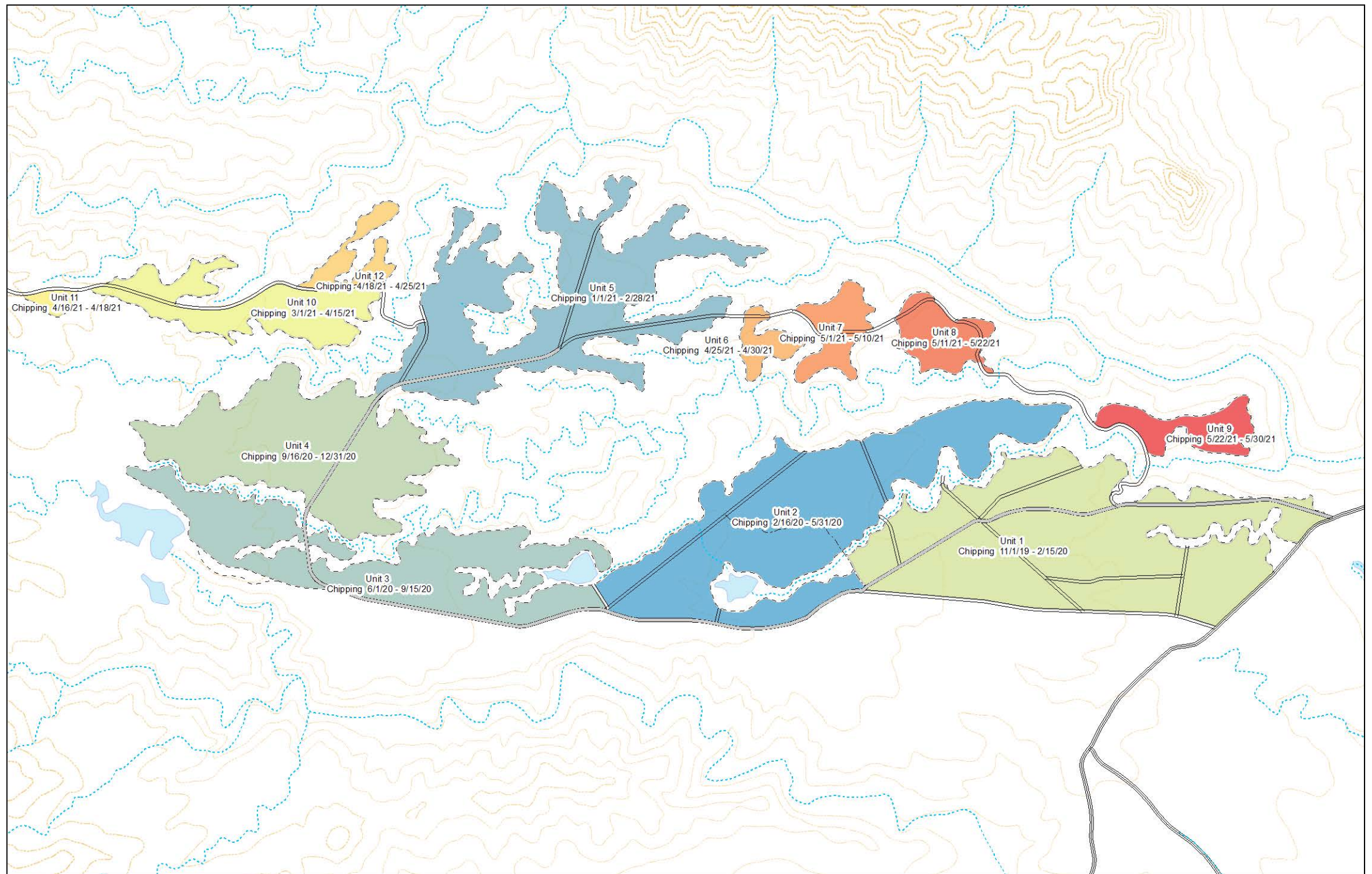
**Exhibit A-3: Aerial Photograph of
Subject Property**



- Specific challenges for the location
 - Access
 - Broken bridge area
 - Former pineapple fields
- Timeline:
 - Harvesting: 10/1/19 – 6/31/21 (21 months)
 - Chipping and hauling: 12/1/19 – 6/31/21 (19 months)







IMPACT AND MITIGATION

CURRENT TENANTS & COMMUNITY

- Current tenants
 - 280 acres (out of 1,067 usable acres) under RP's to Tarey Low, Leland Keale, Frank Rivera, Henry Kupihea and Ed Taniguchi.
 - Meetings with tenants: collaboration to remove invasive trees.
- Community
 - Meeting with community leaders
 - Traffic:
 - 6,300 loads / 19 months = 15 per working day
 - Mitigation A: 5:00AM-12:00PM and 5:00PM-10:00PM
 - Mitigation B: 6:00PM – 6:00AM

CULTURAL IMPACT

- Work exclusively on former cane and pineapple fields without additional soil disturbance, SHPC exemption applies.
- No known presence of archeological, cultural or historic sites; if a historic or burial site is accidentally discovered, work in the area will be stopped and DLNR SHPC notified.
- No known traditional or customary cultural practices of native Hawaiians affected.

SOIL & WATER

- Impact of logging on soil and water resources
- Compliance with DOFAW BMP's to maintain water quality in Hawaii
- Compliance with USDA NRCS soil and water conservation measures

NOISE

- No exceedance of noise level limits (70 dBA at property line)
- No DOH community noise permit required

BOTANICAL RESOURCES AND WILDLIFE

- Botanical Resources
- Wildlife
 - Hawaiian Petrel, Newell's Shearwater, Band-rumped Storm Petrel
 - September 15 – December 15
 - USFWS BMP's
 - Hawaiian Nene Goose
 - Year round
 - USFWS BMP's
 - Hawaiian Coot, Gallinule and Duck
 - Year round
 - USFWS BMP's

- Hawaiian Hoary Bat
 - June 1 – September 15
 - USFWS BMP's

BENEFITS

- For DHHL:
 - Last opportunity to remove the albizia
 - Agricultural land becomes available again
 - Improved access
- For Green Energy Team:
 - Harvesting of the property allows to postpone the harvesting of plantation eucalyptus thus creating a supply cushion, this is essential in a low EBITDA business.
 - Green Energy Team will spend an estimated \$9MM to clear the property, this is \$1.1MM more than the cost of harvesting existing eucalyptus plantations.

QUESTIONS