

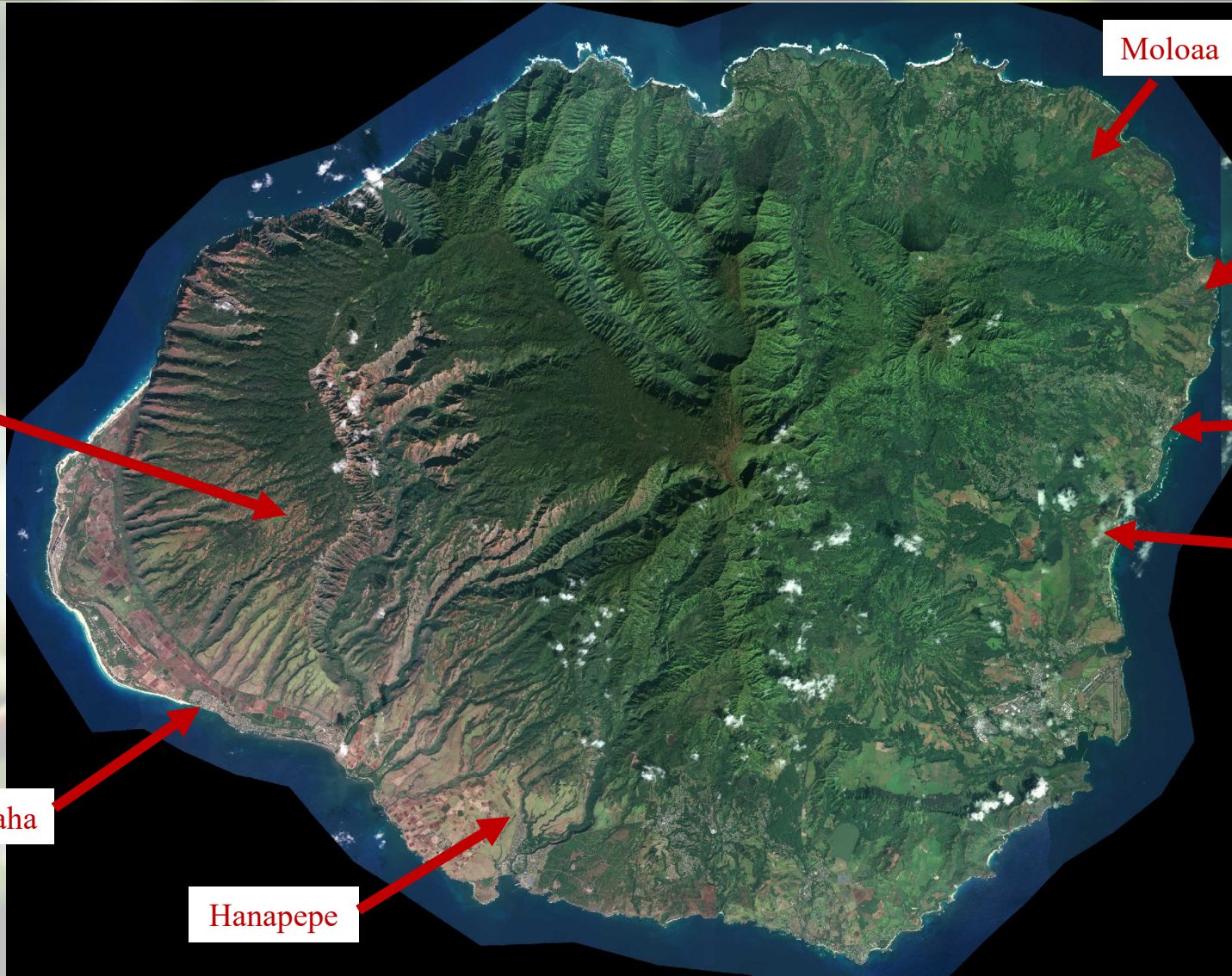


**Department of Hawaiian Home Lands**

# **Kauai Unencumbered Homestead Lot Inventory**

**Hawaiian Homes Commission  
Land Development Division  
Item E-2 Workshop  
September 16, 2019**

# Kauai County Map



Moloaa

Anahola

Puu Opae

Kapaa

Wailua

Kekaha

Hanapepe

# Lease & Lot Summary

| Kauai Homestead Lot Inventory                             |      |        |              |
|---|------|--------|--------------|
| Subdivision   | Type | Leases | Unencumbered |
| <a href="#">Anahola Ag Lots Unit 1</a>                    | A    | 25     | 2            |
| <a href="#">Anahola Ag Lots Unit 2</a>                    | A    | 20     | 1            |
| <a href="#">Anahola Village Ag Lot</a>                    | A    | 1      | 0            |
| <a href="#">Puu Opae</a> * 3 lot entries under 1 lease#   | P    | 3      | 2            |
| <a href="#">Anahola First Increment</a>                   | R    | 80     | 9            |
| <a href="#">Anahola Second Increment</a>                  | R    | 73     | 2            |
| <a href="#">Anahola Third Increment</a>                   | R    | 36     | 0            |
| <a href="#">Anahola Village Res Lots, Unit 1 &amp; mi</a> | R    | 39     | 14           |
| <a href="#">Anahola - Kamika</a>                          | R    | 66     | 0            |
| <a href="#">Anahola Bayview</a>                           | R    | 31     | 0            |
| <a href="#">Anahola Fifth Increment</a>                   | R    | 39     | 0            |
| <a href="#">Anahola (Piilani Mai Ke Kai - phase 1)</a>    | R    | 67     | 13           |
| <a href="#">Anahola (Piilani Mai Ke Kai - phase 2)</a>    | R    | 0      | 51           |
| Anahola UNDV  | R    | 103    |              |
| <a href="#">Hanapepe</a>                                  | R    | 47     | 0            |
| <a href="#">Kekaha, Unit 4</a>                            | R    | 49     | 0            |
| <a href="#">Kekaha, Unit II</a>                           | R    | 21     | 0            |
| <a href="#">Kekaha</a>                                    | R    | 47     | 0            |
| KAUAI TOTAL   |      | 747    | 94           |

# Unencumbered Summary

| Area                                    | category        |                              |                   |           | Dwelling / Structure |
|---|-----------------|------------------------------|-------------------|-----------|----------------------|
|   | lot assessment* | cancellation being finalized | prepare for award | offered   |                      |
| Anahola Ag Lots Unit 1                  | 2               | 0                            | 0                 | 0         | 2                    |
| Anahola Ag Lots Unit 2                  | 1               | 0                            | 0                 | 0         | 0                    |
| Puu Opae Pasture Lots                   | 2               | 0                            | 0                 | 0         | 1                    |
| Anahola Res First Increment             | 8               | 0                            | 1                 | 0         | 1                    |
| Anahola Res Second Increment            | 2               | 0                            | 0                 | 0         | 0                    |
| Anahola Village Res Lots Unit 1 & misc. | 14              | 0                            | 0                 | 0         | 0                    |
| Anahola (Piilani Mai Ke Kai - phase 1)  | 0               | 0                            | 3                 | 10        | 0                    |
| Anahola (Piilani Mai Ke Kai - phase 2)  | 51              | 0                            | 0                 | 0         | 0                    |
| <b>TOTAL</b>                            | <b>80</b>       | <b>0</b>                     | <b>4</b>          | <b>10</b> |                      |

\* may include determining w hich Division is responsible for the lot

# Lot Assessment

(Anahola Agriculture Lots Units 1 & 2)

Lot 21  
Next to Water Tank



UNIT 2

UNIT 1

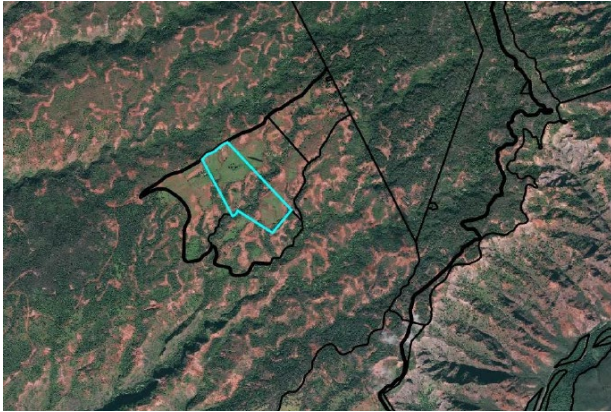


Lot 26



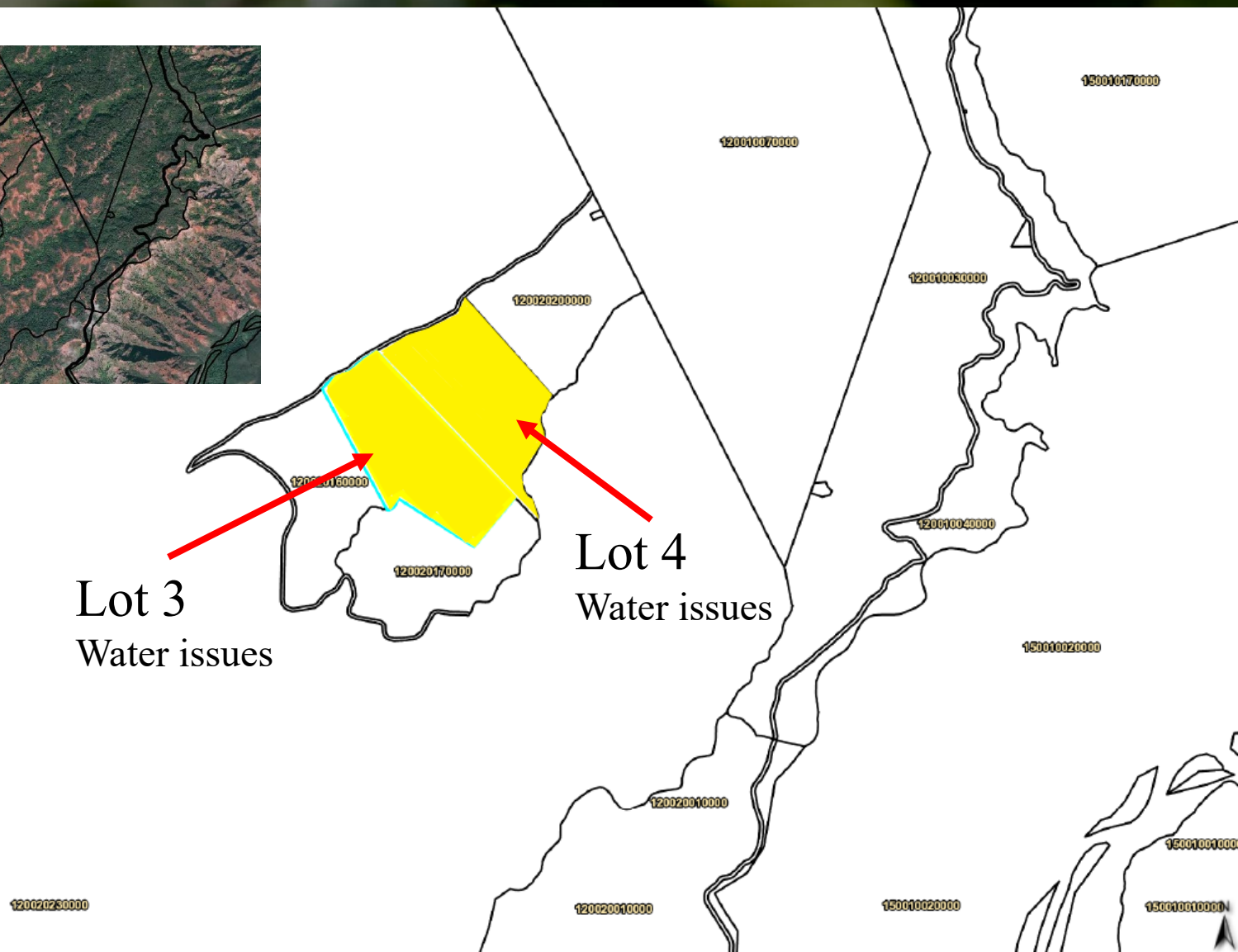
# Lot Assessment

## (Puu Opae Pasture Lots)



Lot 3  
Water issues

Lot 4  
Water issues



# Lot Assessment & Preparation for Award

## (Anahola Residence Lots First Increment)

**Lot 10**

**Lot 1**

**Lot "K"**

**Water Pressure & Underground Injection Issues**

**Lot 3**

**Lot 2**

**Lot "J"**

**Lot 11**

**Lot 57**

**Lot 78 drainage issues**

Map labels: KALALEA RD, KONOHA RD, MAKAHO RD, KAPUNOHU ST, IOANE RD, KAMELO ST, KUHIOHI ST, RAHUAHUA RD, LAULA ST, ULUHUA.

Map coordinates: 480030130000, 4801702300, 480030200000, 480030300000, 480030400000, 480030180000, 470040070000.

# Lot Assessment

(Anahoa Residence Lots Second Increment)





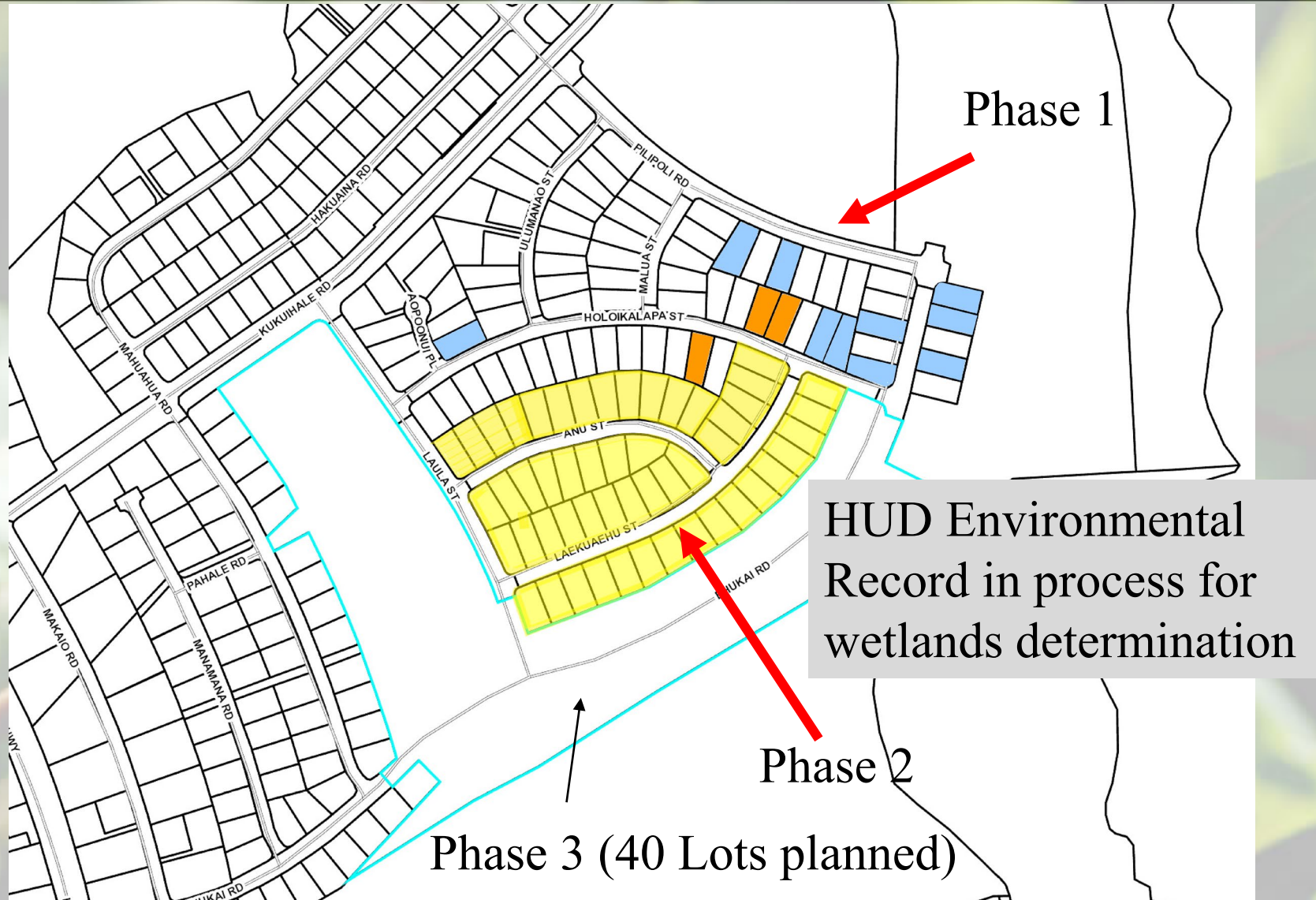
# Lot Assessment

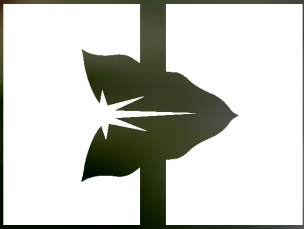
(Anahola Village Res Unit 1 & misc.)



# Lot Assessment, Preparation for award & Offering in Progress

(Anahola – Piilani Mai Ke Kai Phases 1 & 2)





***Mahalo!***

[www.dhhl.hawaii.gov](http://www.dhhl.hawaii.gov)