



HAWAIIAN HOME LANDS

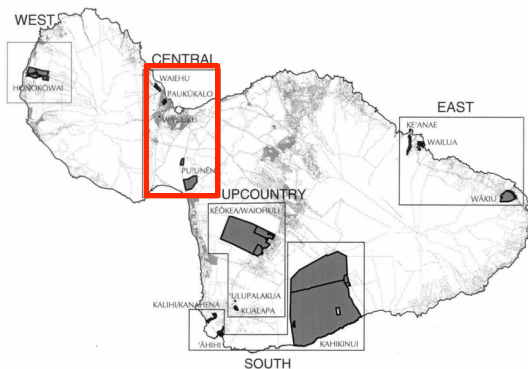
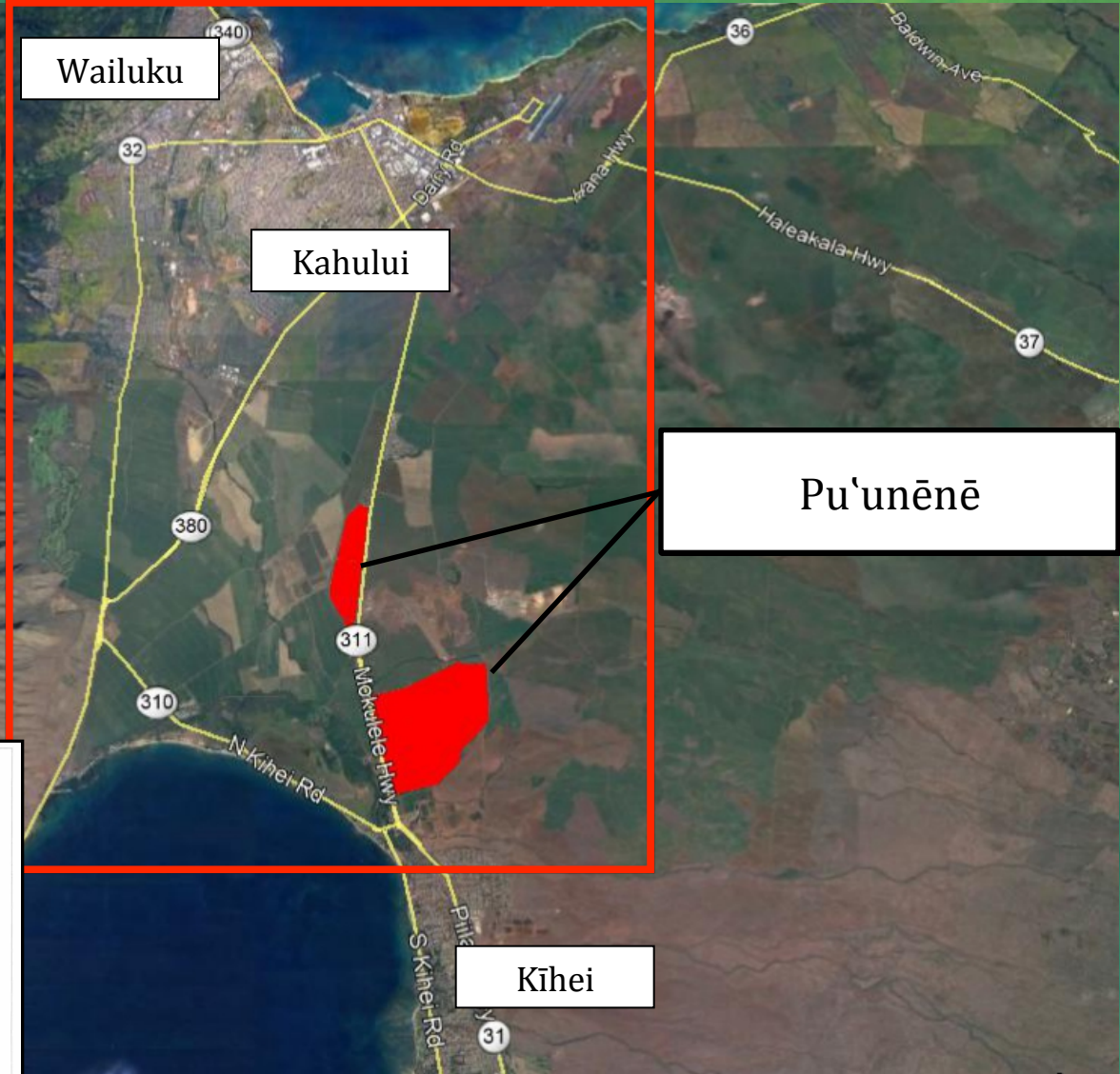
HAWAIIAN HOMES COMMISSION
DEPARTMENT OF HAWAIIAN HOME LANDS

HHC Agenda Item G-1

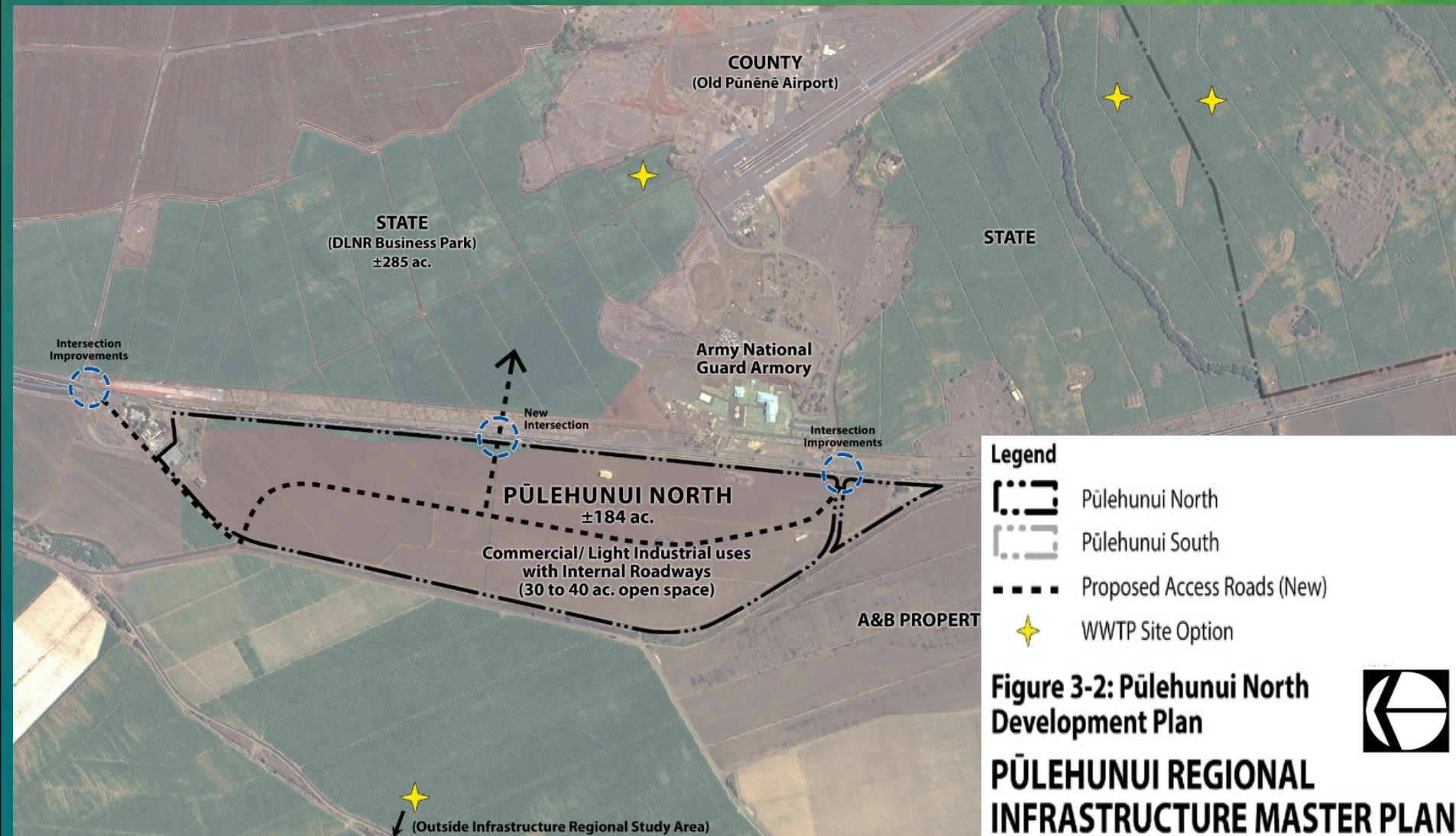
Maui Island Plan Amendment to Land Use Designations

**Presentation to the Hawaiian Homes Commission
August 19-20, 2019**

Maui Island Plan- Central Region



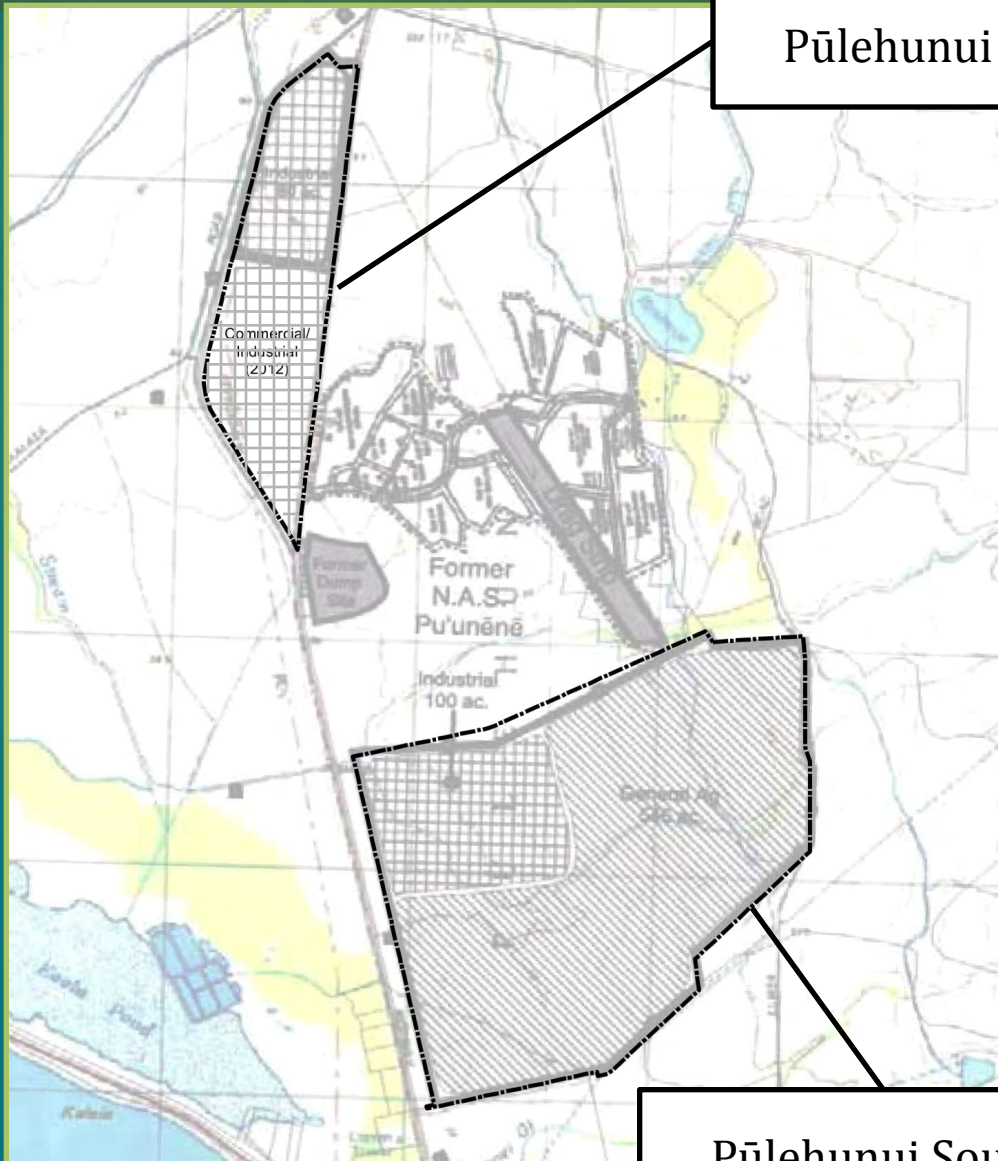
Pūlehunui North



No Changes to Existing Land Use Designations

Maui Island Plan- Pu'unēnē

Pūlehunui North



Pūlehunui South

Current Land Use Designations

Pu'unēnē Area	Total Acres	Land Use	Land Use Acres
Pūlehunui North	184	industrial	184
Pūlehunui South	646	industrial	100
		General agricultural	546
T O T A L ACRES	830	industrial	284
		General agricultural	546



Industrial



General Agricultural

Pūlehunui Final EIS



Proposed Land Uses

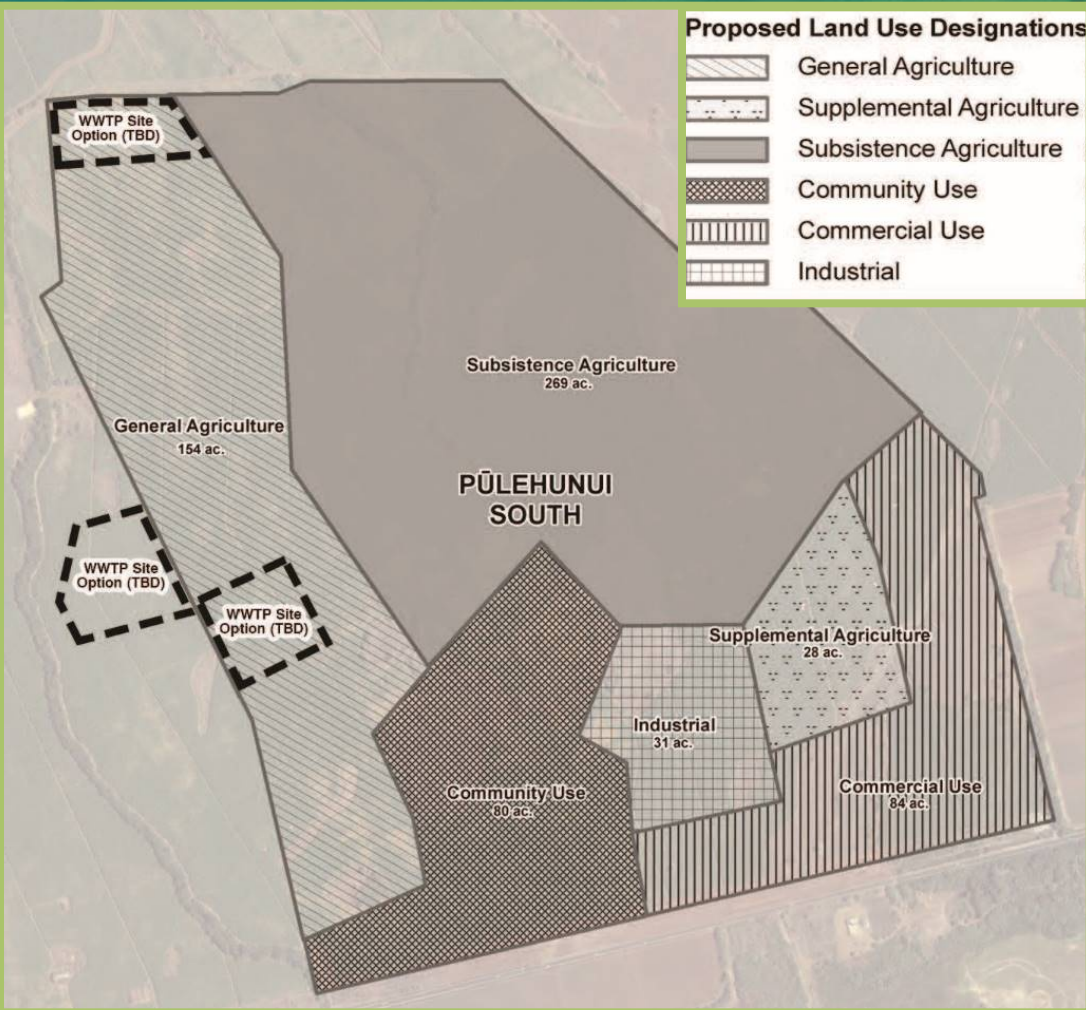
	Farms	(±146 ac.)
	Ag Support	(±24 ac.)
	Subsistence Ag/Homesteads (2+ acre lots, approx. 80-100 lots)	(±238 ac.)
	Beneficiary Gardens	(±27 ac.)
	Commercial Enterprises	(±70 ac.)
	Farmers Market	(±11 ac.)
	Culture & Arts	(±18 ac.)
	Education	(±33 ac.)
	Roads	(±31 ac.)
	Open Space/Existing Gulch	(±48 ac.)
Total Land Area		646 ac.

* WWTP Site Option
(Other wastewater alternatives being evaluated.)

Conceptual Plan
PŪLEHUNUI SOUTH

Maui Island Plan- Pulehunui South

Proposed Changes to Land Use Designations



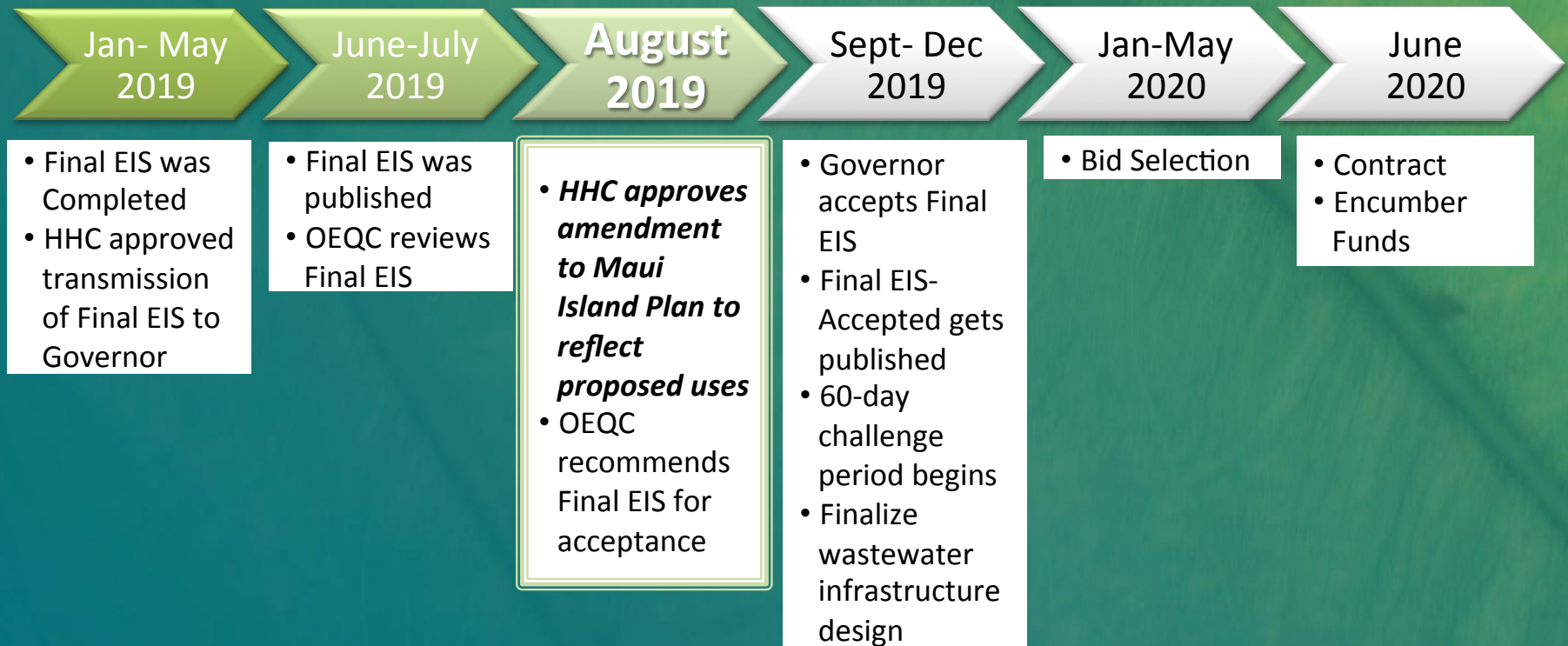
Land Use Designation	Available for Homestead Use?	Maui Island Plan CURRENT Acres	Proposed Maui Island Plan Amendment Acres
General Agriculture	No	546	154
Industrial	No	100	31
Supplemental Agriculture	Yes	0	28
Subsistence Agriculture	Yes	0	269
Community Use	No*	0	80
Commercial Use	No	0	84

Next Steps

- August 2019: OEQC recommends Final EIS be Accepted by Governor
- September 2019: Anticipated acceptance of Final EIS by Governor

Schedule Milestones

Pūlehunui Regional Infrastructure Master Plan



Mahalo