



# Kealakehe/Laʻi ʻŌpua Regional Plan Update

Meeting #1  
January 10, 2019



# Agenda

- 5:00pm: Open House, Pupu & Sign-in
- 6:00pm: Welina & Presentation on the Regional Plan Update
- 6:15pm: Questions on Presentation
- 6:30pm: Visioning Exercise – small groups
- 7:00pm: Break
- 7:10pm: Large group discussion
- 7:40pm: Next steps
- 7:55pm: Closing

“Our mission is to shape plans that enhance the social, cultural, economic, and environmental health of Hawai‘i’s communities.”

Hawai‘i Island projects:

- South Point Resources Management Plan & Environmental Assessment 2018
- Kāwā Resources Management Plan 2017
- North Kōhala Community Development Plan 2008
- South Kōhala Community Development Plan 2008





# What is a Regional Plan?

Department of Hawaiian Home Lands  
Planning System



## Purpose for regional plans within DHHL system:

- To directly involve the homestead community in planning for their region.
- To identify priority projects that are important to the homestead community.
- To identify potential resources (e.g. partners, funding sources) for implementing priority projects.

# 2009 Kealakehe/La'i Ōpua Regional Plan

- Homestead Regional Profile
- Regional Lands & Development
- Infrastructure
- Homestead Issues & Priorities

## KEALAKEHE - LA'I 'ŌPUA



### REGIONAL PLAN

NOVEMBER 18, 2009



DEPARTMENT OF HAWAIIAN HOMELANDS



# Priority Project – North Kona Water Source Development and Storage

- **PROJECT CHAMPION: DHHL**
- **CURRENT STATUS: In-progress**

The Hawaiian Homes Commission (HHC) allocated \$1M in trust funds for water development in North Kona. DHHL has secured a contractor to prepare environmental studies and preliminary engineering work for two potential well sites in North Kona:

- (1) Gianulias property
- (2) Kamehameha Schools well site

These studies are currently underway with an anticipated completion for the studies in January 2020.



# Priority Project – Continued Support of Laʻi Ōpua 2020 Community Sustainable Projects

- **PROJECT CHAMPION: L2020**
- **CURRENT STATUS: In-progress.**

L2020 completed the construction of its medical center in 2015. The vertical construction of its community center is in progress. Implementation of other portions of its master plan for the community parcel as well as its commercial parcel are pending until additional water credits and additional funding become available.



# Priority Project – Renewable Energy Initiative

- **PROJECT CHAMPION: DHHL**
- **CURRENT STATUS: In-progress.**

DHHL is participating in the Hawaiian Electric Light Company (HELCO) Request for Proposals (RFP) process and solicited Kalaoa lands for potential development.



# Priority Project – Kona Regional Park

- **PROJECT CHAMPION:** County of Hawai'i and Surrounding Community
- **CURRENT STATUS:** In-progress.

Various community partners have been leading discussions and planning for the park development.





# Priority Project – Treatment Plan for Inadvertent Discovery of Iwi Kūpuna

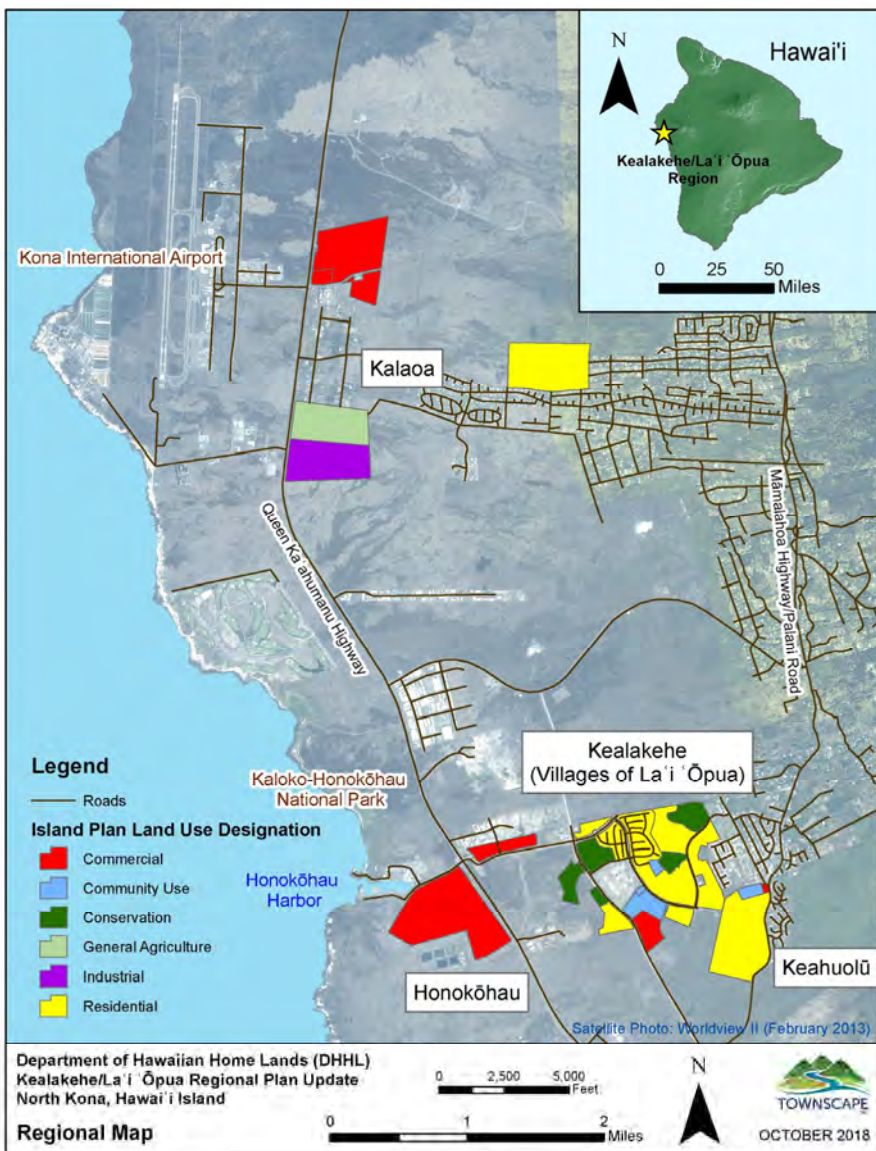
- **PROJECT CHAMPION: DHHL**
- **CURRENT STATUS: Not started.**

The priority project called for the development of a burial treatment plan for inadvertently discovered burials in Laʻi Ōpua. This plan has not been started.



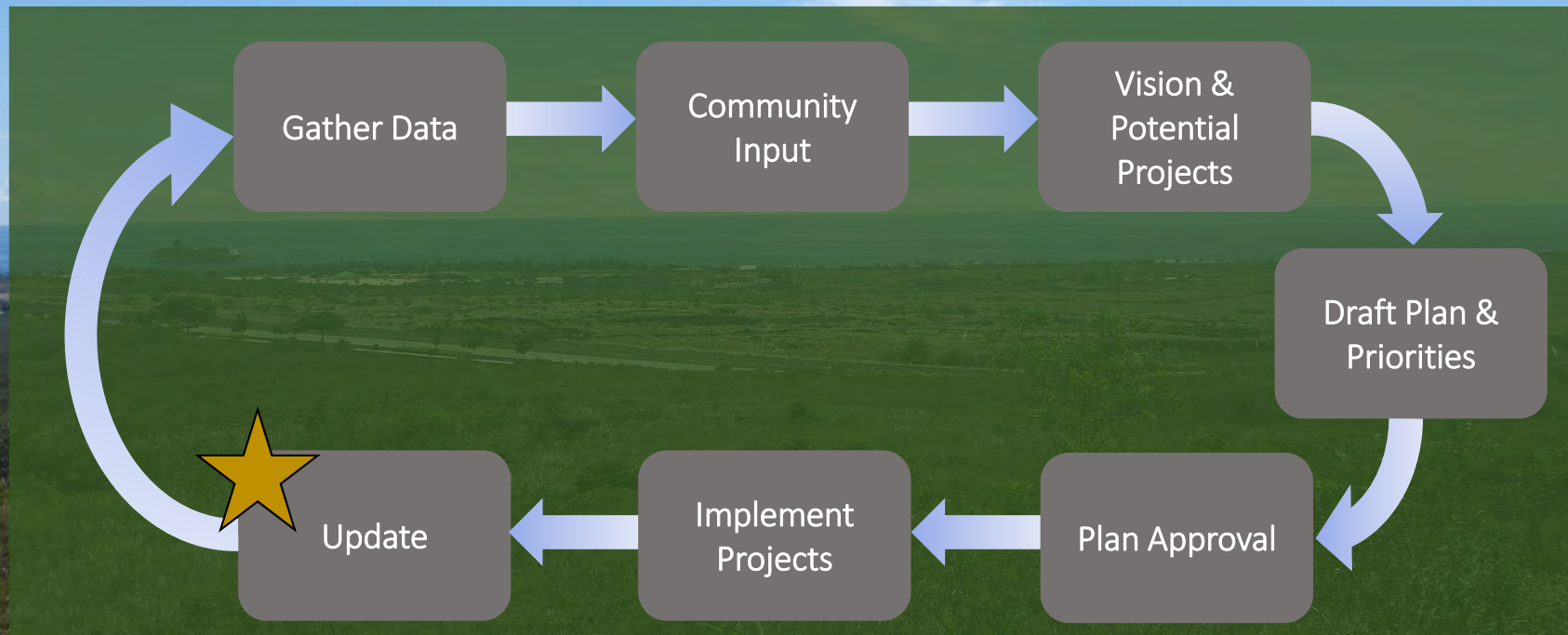
# 2018 Regional Plan Update – Planning Area

- The Planning Area has increased to include:
  - Kalaoa (714 acres) \*added area
  - Kealakehe (433 acres)
  - Honokōhau (200 acres)
  - Keahuolū (150 acres)
  - Total Planning Area (1,498 acres) \*increased from 410 acres in 2009
- Create a list of community values.
- Write a community Vision Statement.





# Where are we in the process?



**Update.** Since DHHL knows that regional development is a dynamic process with constantly changing opportunities and emerging issues, regular regional plan updates are built into the planning process. We are here at this step, updating the 2009 Kealahou-La'i 'Ōpua Regional Plan.



# Projected Timeline & Process

- **Beneficiary Consultation Meeting #1 – January 10<sup>th</sup>, 2019**
  - Purpose:
    - Introduce Regional Plan Update project
    - Vision Statement & Values exercise
- **Beneficiary Consultation Meeting #2 – February/March 2019**
  - Purpose:
    - Discuss Projects
    - Prioritize Projects exercise
- **Beneficiary Consultation Meeting #3 – May 2019**
  - Purpose:
    - Present Draft Regional Plan Update
    - Receive comments on draft update from community



Questions?





# Visioning Exercise: Part I - Today (the Present)

1. Break out into **TWO** small groups
2. Scenario: A film crew is coming to make a documentary of your community. Describe what they would focus on in a film about your community. What does it look like? What would they highlight & why?



## Visioning Exercise: Part II – Tomorrow (the Future)

1. Remain in small groups
2. Scenario: The same film crew returns to your community 30 years later. Describe what they would see. What would it look like? What would they highlight & why?





BREAK TIME

10 MINS



# Visioning Exercise: Part III – Report Back

1. Gather as **ONE** large group

2. Presentations:

- a) Each small group share responses
- b) Each small group add to list of values

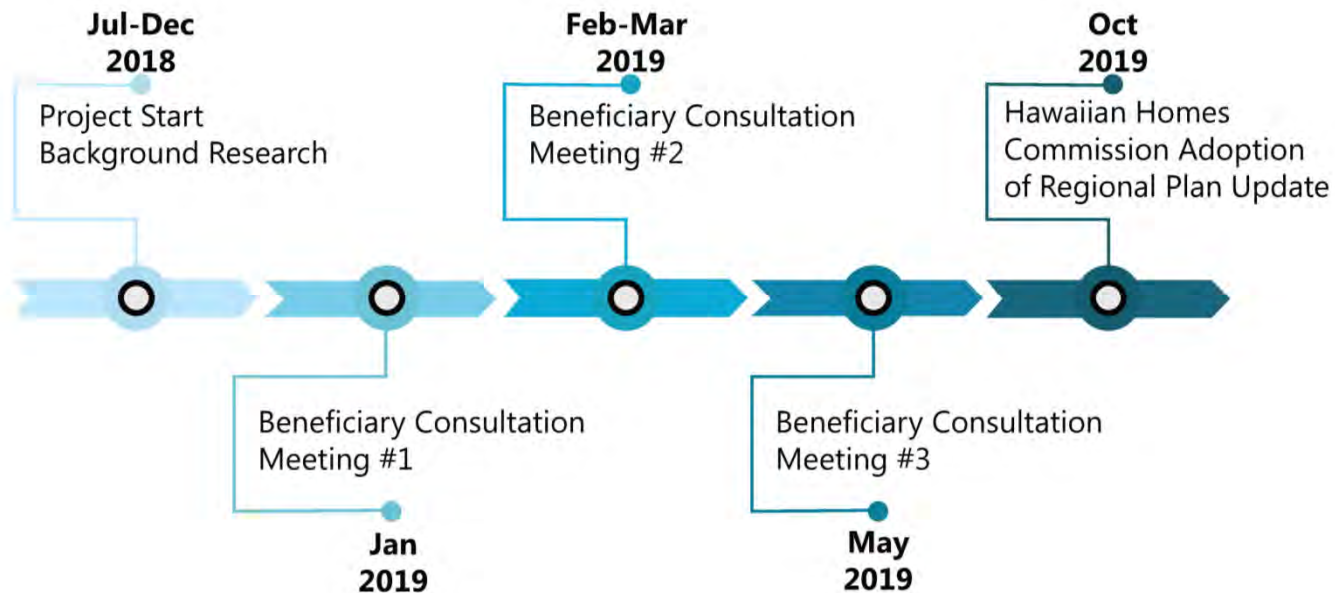


## Next Steps:

- Consolidate everything we heard from tonight's meeting.
- Draft a vision statement based on information gathered in this meeting and review at the next meeting.
- Next meeting will focus on projects and identifying priority projects using the vision/values identified from tonight's meeting as a framework.
- Next meeting is tentatively scheduled for:  
February/March 2019



# Projected Timeline & Process





# Mahalo!

For more information, please contact:

Andrew Choy, Project Manager  
DHHL Planning Office  
Phone: (808) 620-9279  
E-mail: [andrew.h.choy@hawaii.gov](mailto:andrew.h.choy@hawaii.gov)



HAWAIIAN HOME LANDS  
HAWAIIAN HOMES COMMISSION • DEPARTMENT OF HAWAIIAN HOME LANDS



TOWNSCAPE, INC.  
Environmental & Community Planning

Lillie Makaila, Planner  
Townscape, Inc.  
Phone: (808) 550-3893  
E-mail: [lillie@townscapeinc.com](mailto:lillie@townscapeinc.com)