



HAWAIIAN HOME LANDS
HAWAIIAN HOMES COMMISSION
DEPARTMENT OF HAWAIIAN HOME LANDS

Papakolea Community Meeting

Monday, July 15, 2019

Papakolea Community Center



HAWAIIAN HOME LANDS
HAWAIIAN HOMES COMMISSION
DEPARTMENT OF HAWAIIAN HOME LANDS

- 1) Welcome**
- 2) Planning Division Update**
- 3) Land Development Division Update**
- 4) Homestead Community Update**
- 5) Open House**



HAWAIIAN HOME LANDS
HAWAIIAN HOMES COMMISSION
DEPARTMENT OF HAWAIIAN HOME LANDS

Planning Division Update



HAWAIIAN HOME LANDS
HAWAIIAN HOMES COMMISSION
DEPARTMENT OF HAWAIIAN HOME LANDS

Planning Office Update

Planning Office Update

- 1. Beneficiaries**
- 2. Lands**
- 3. Plans**
- 4. Planning Projects**

Native Hawaiian Beneficiaries

As of June 30, 2019

Applications*

44,892 Statewide

32.1% O'ahu Applications

Lessees

9,898 Statewide

43.9% O'ahu Lessees

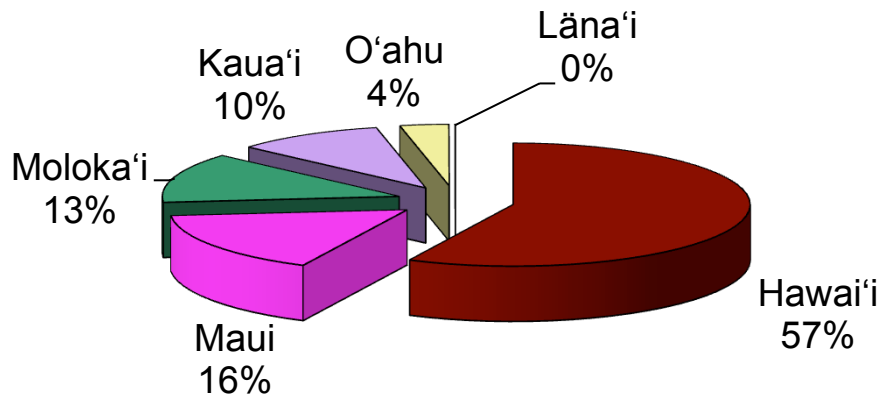
WAIT LIST	APPLICATIONS
Residential	10,727
Agricultural	3,732
Pastoral	0 (n/a)
TOTAL O'AHU:	14,459

AREA	LESSEES
Papakōlea	64
Kewalo	249
Kalāwahine	90
TOTAL, TOWN (9.3%)	403

*Area and Islandwide Lists

DHHL Statewide Inventory

Hawaiian Home Lands Trust
Percent Acres by Island



■ Hawai'i ■ Maui ■ Moloka'i ■ Kaua'i ■ O'ahu ■ Lāna'i

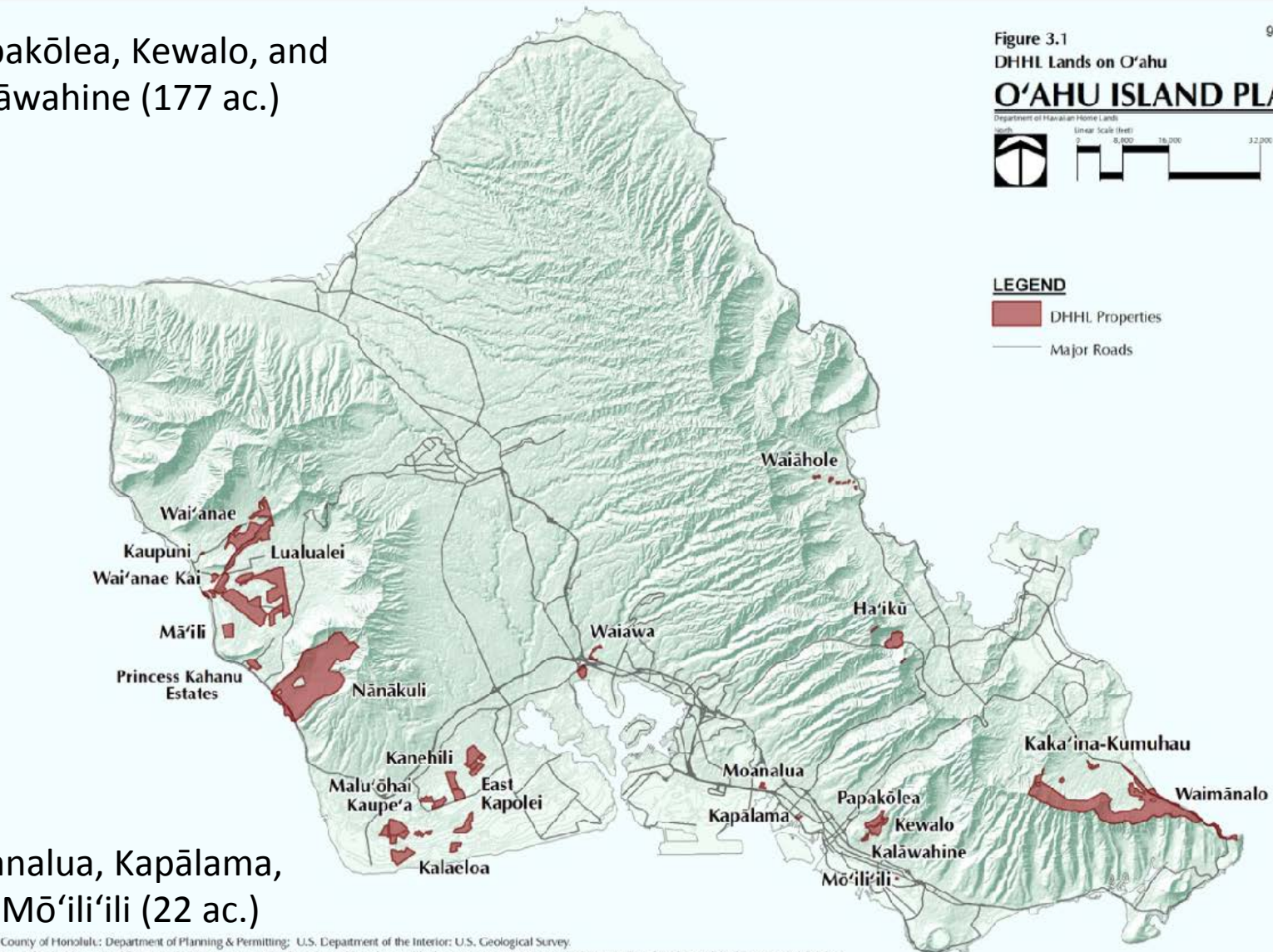
ISLAND	ACRES
Hawai'i	117,551
Maui	31,904
Moloka'i	25,748
Kaua'i	20,575
O'ahu	8,154
Lāna'i	50
TOTAL	203,982

DHHL Lands, Kona Moku

199 acres (2.4%)

Papakōlea, Kewalo, and
Kalāwahine (177 ac.)

Moanalua, Kapālama,
and Mō'ili'ili (22 ac.)

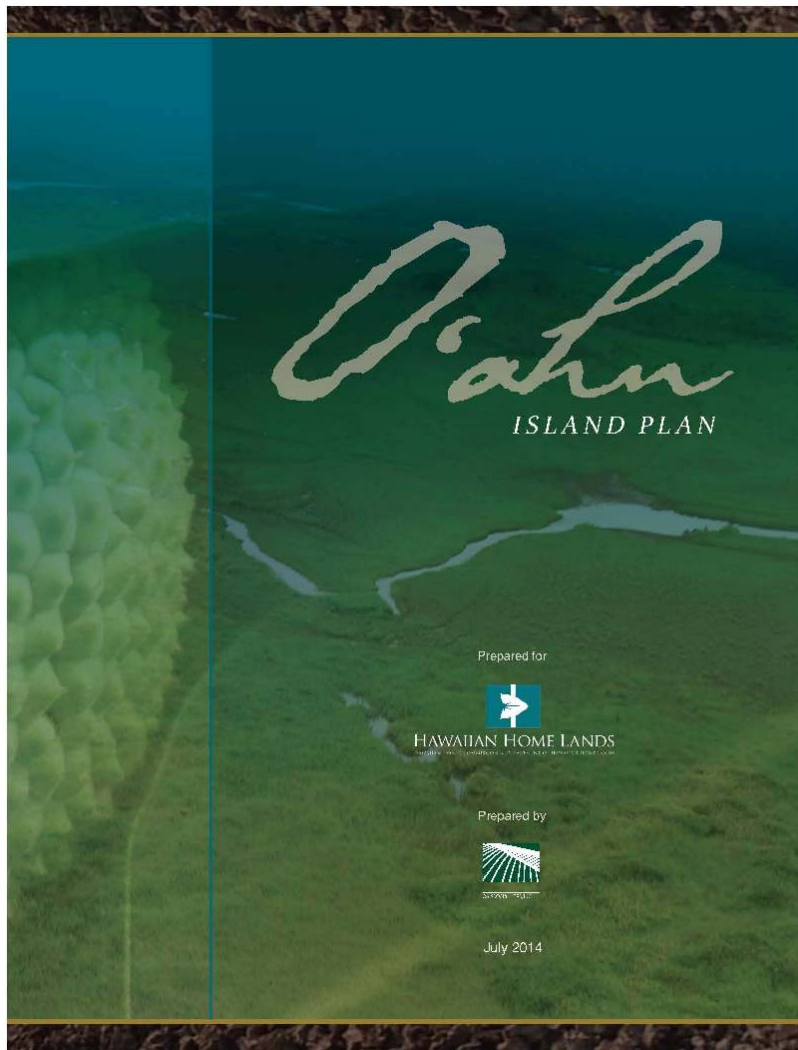


9/20/2013

Source: City & County of Honolulu; Department of Planning & Permitting; U.S. Department of the Interior; U.S. Geological Survey.
Disclaimer: This map has been prepared for general planning purposes only and should not be used for boundary interpretations or other spatial analysis beyond the limitations of the data.

Island Plan

Regional Plan



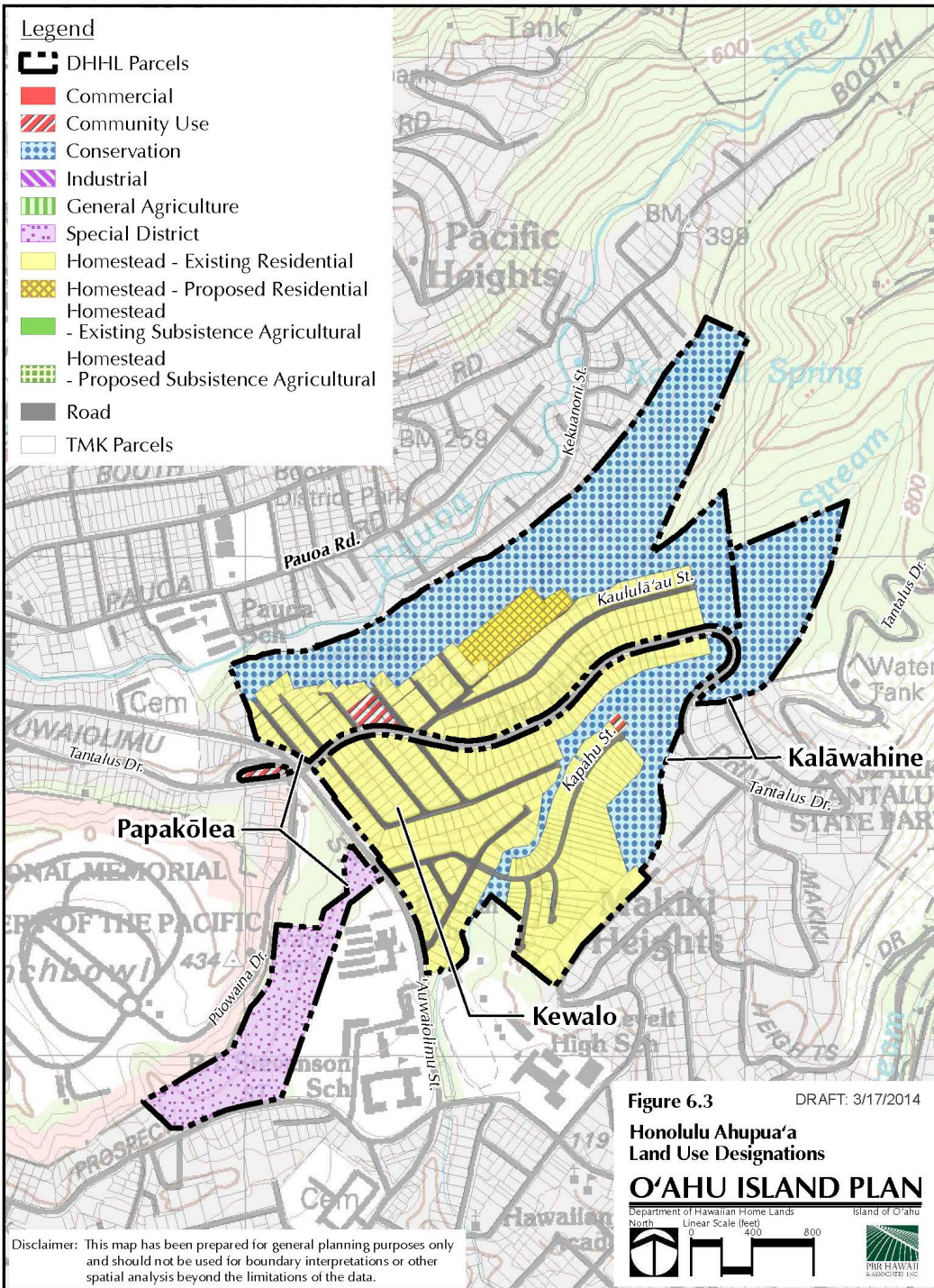
PAPAKŌLEA



December 2009



Regional Plan update is underway – 1st Community Meeting will be in Sept.



O'ahu Island Plan Papakōlea, Kewalo, Kalāwahine LUD's

- 5 acres were deemed developable for residential homesteads
- 85 acres are in existing residential homesteads
- 2 acres are in Community Use
- 15 acres are in Special District
- 70 acres are in Conservation

PLANNING CONSIDERATIONS

Opportunities

- Location
- Views

Constraints

- Steep slopes/rock fall
- Flooding/drainage
- Aging/deteriorating infrastructure
- Parking / Access / Congestion

O'ahu Island Plan

Moanalua, Kapālama and Mō'ili'ili LUD's

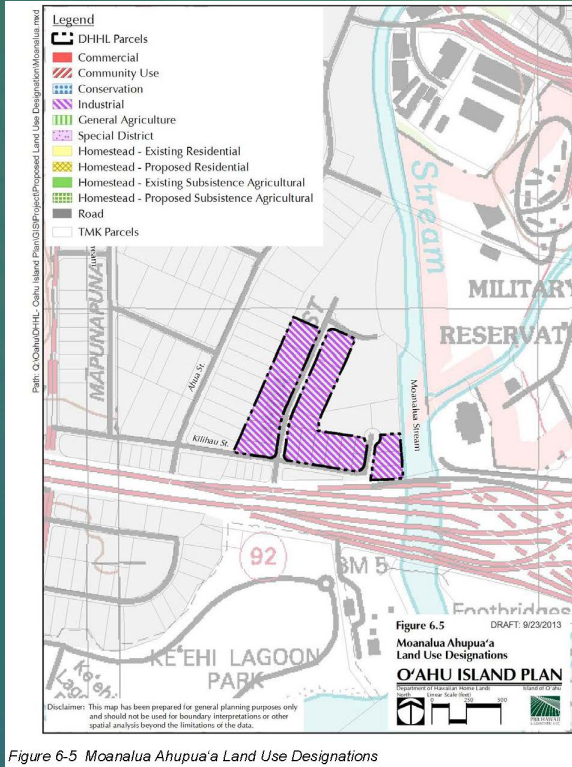


Figure 6-5 Moanalua Ahupua'a Land Use Designations

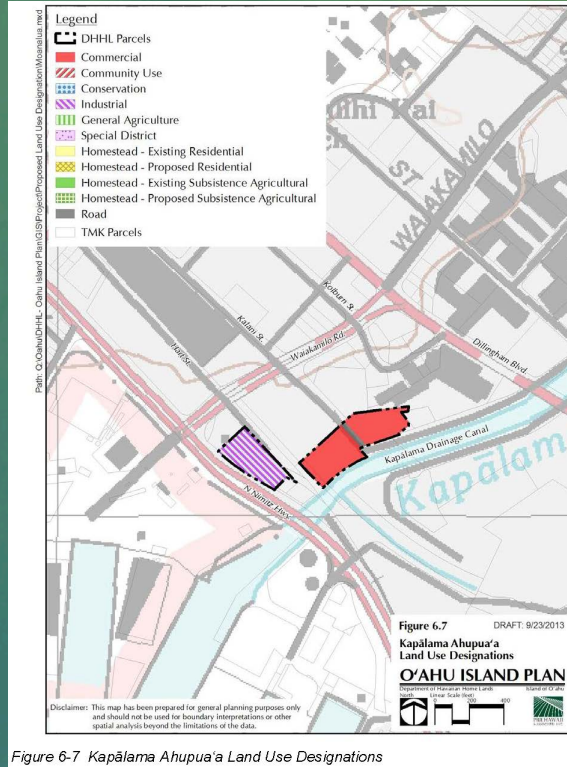


Figure 6-7 Kapālama Ahupua'a Land Use Designations

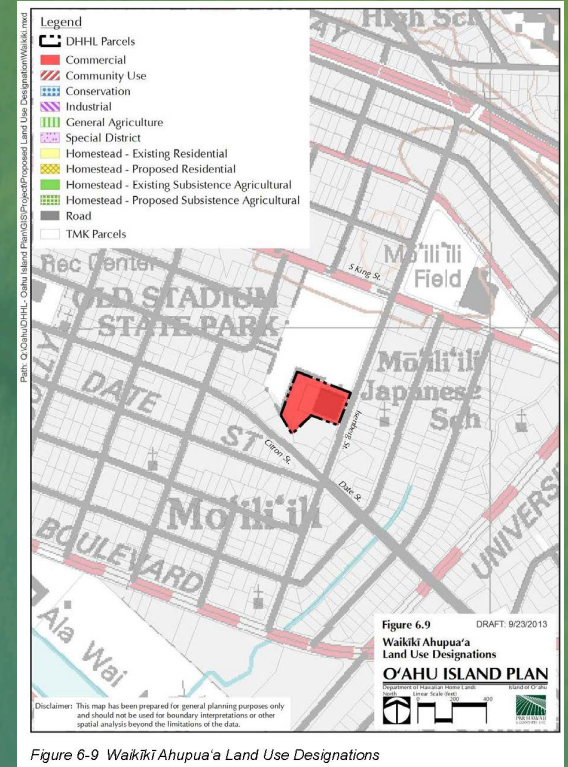


Figure 6-9 Mō'ili'ili Ahupua'a Land Use Designations

Moanalua

- 15 acres in Industrial

Kapālama

- 3 acres in Commercial
- 2 acres in Industrial

Mō'ili'ili

- 2 acres in Commercial

PLANNING CONSIDERATIONS:

Flooding/drainage, SLR, TOD (Transit Oriented Development) / mixed use opportunities

Kona Moku – Current Planning-Related Projects

- **Papakōlea Regional Plan Update – first Community Meeting in mid-September 2019**
- **Assisting LMD w/RFP for 820 Isenberg St. Redevelopment - to be issued in next 60 days**
- **Assisting LMD w/TOD Conceptual Redevelopment Plans for Moanalua Kai & Kapālama - revised to reflect SLR projections**
- **Assisting Admin Rules Officer w/drafting Supplemental Dwelling Unit (SDU) Rules**



HAWAIIAN HOME LANDS
HAWAIIAN HOMES COMMISSION
DEPARTMENT OF HAWAIIAN HOME LANDS

Land Development Division Update



HAWAIIAN HOME LANDS
HAWAIIAN HOMES COMMISSION
DEPARTMENT OF HAWAIIAN HOME LANDS

Papakolea Sewer System Update

LAND DEVELOPMENT DIVISION
Item E-1 Workshop
Monday, July 15, 2019

Papakolea, Kewalo and Kalawahine



PAPAKOLEA

KALAWAHINE

KEWALO

Papakolea Sewer Improvements

Purpose

- Repair and/or replace damaged and undersized pipes
- To upgrade sewer improvements and access which comply with City and County Standards



Before

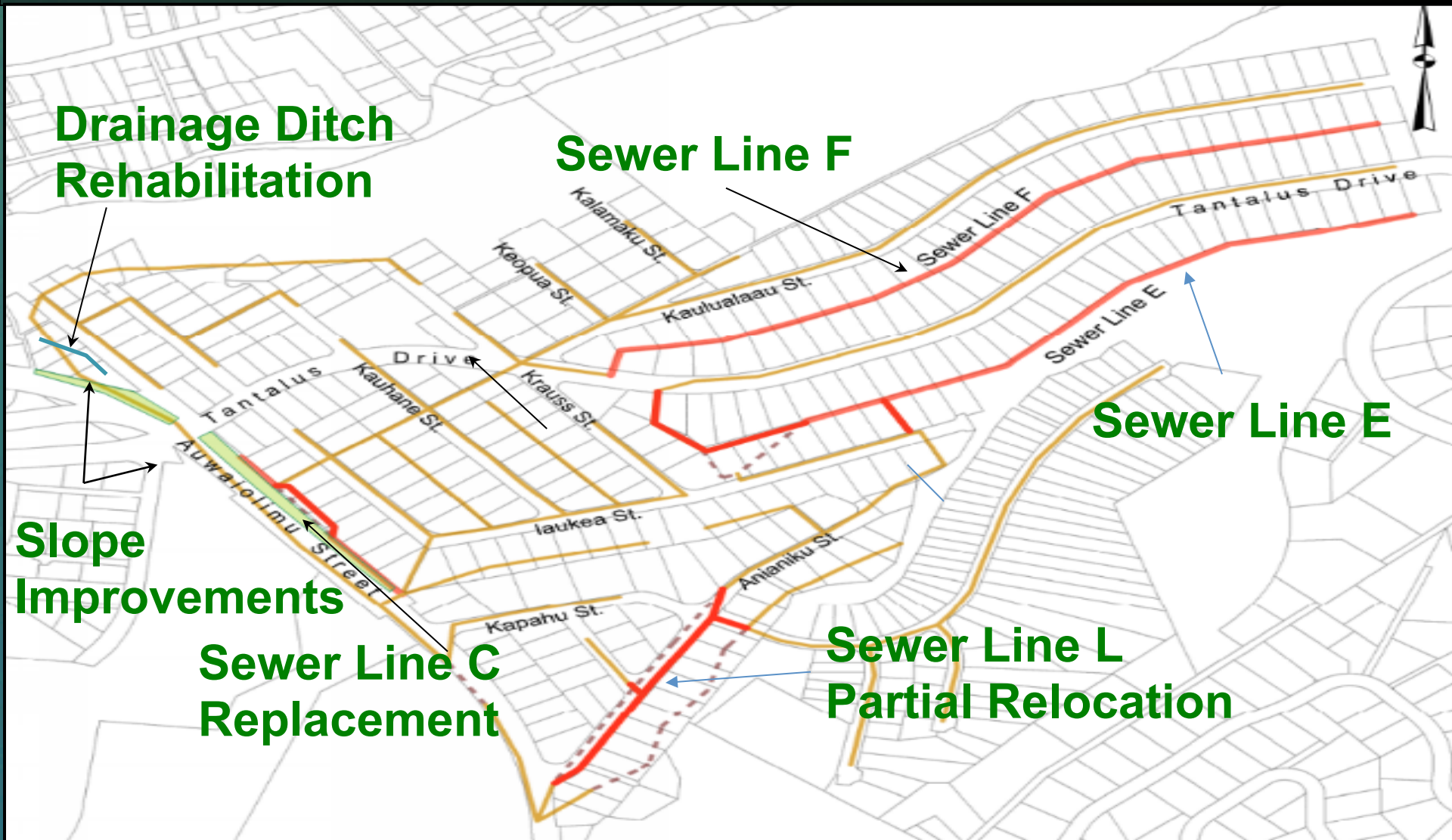


During



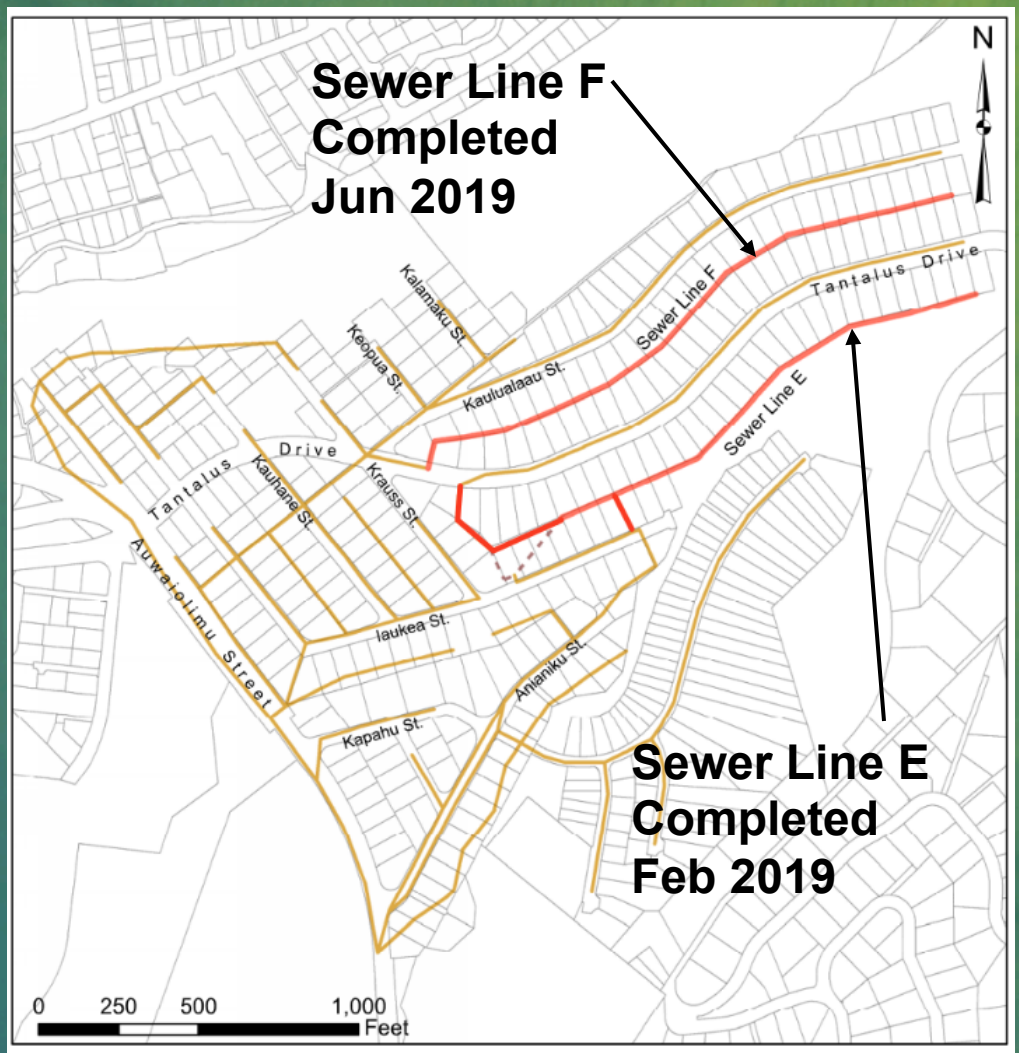
After

Papakolea Sewer Improvements Phase 1



Papakolea Sewer Improvements Phase 1 – Sewer Line E & F

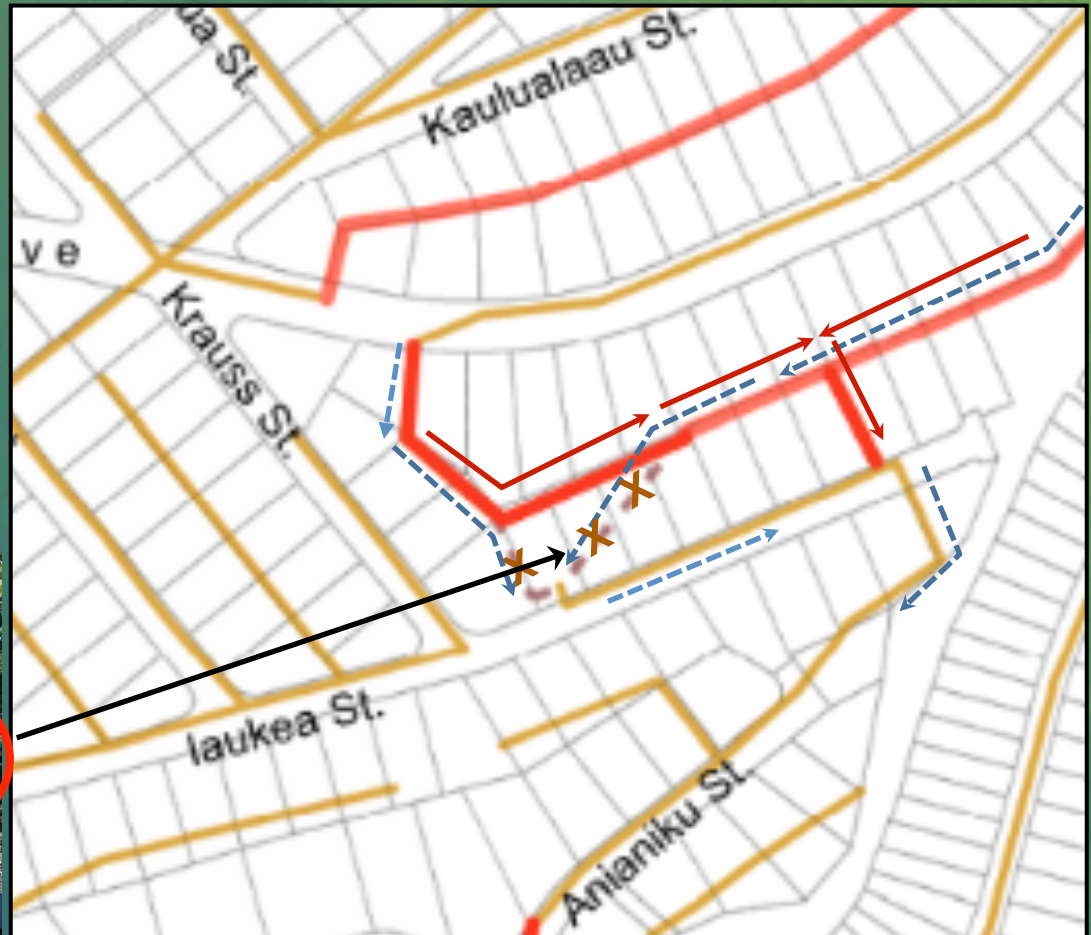
- 65 Lots
- 4,200 Linear feet
- 28 New sewer manholes
- Cost: \$5.5 Million



Papakolea Sewer Improvements Sewer Line E

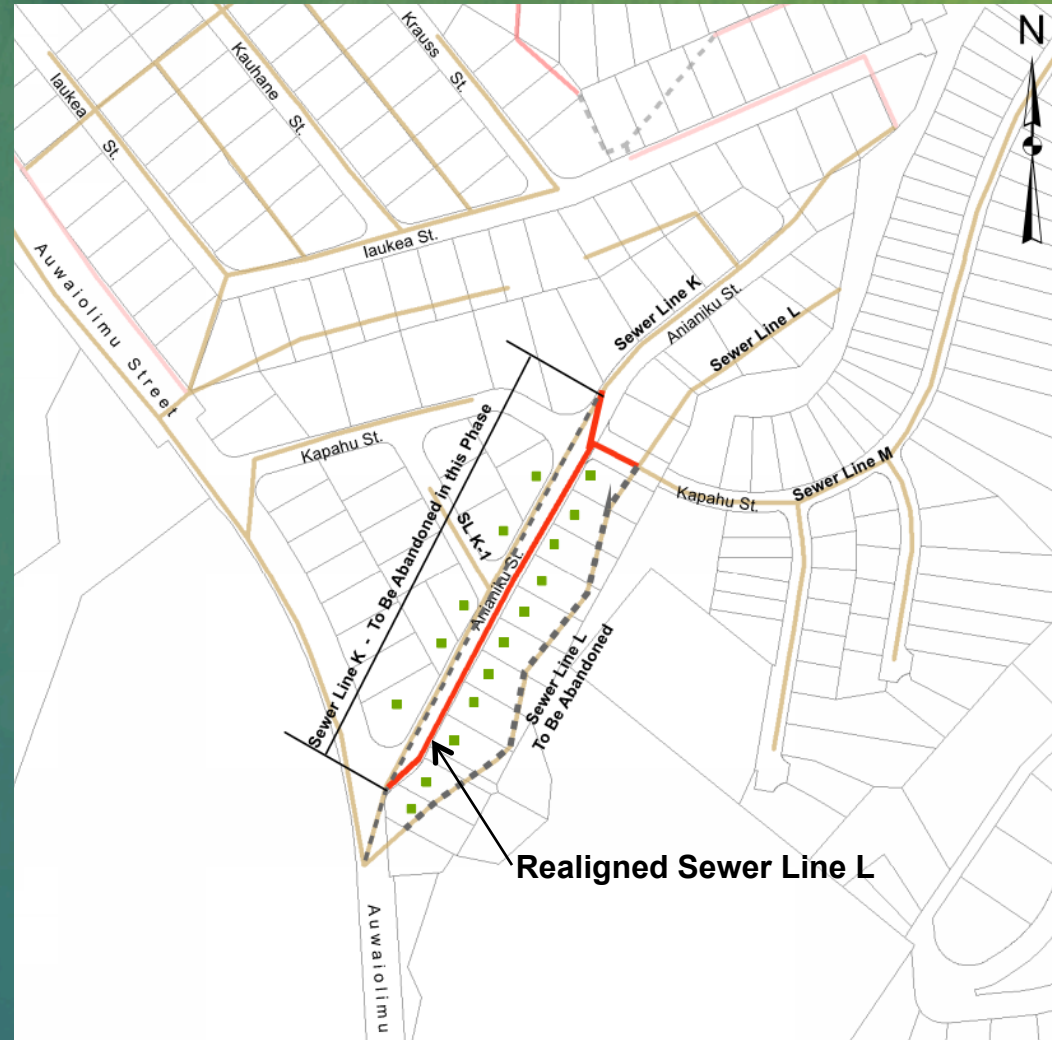
Sewer Line E:

- Realigned and rerouted sewerline and manhole to avoid bisecting properties



Papakolea Sewer Improvements Phase 1 – Sewer Line L Realignment

- 900 LF, 10-inch pipe
- 6 New sewer manholes
- 16 Lateral reconnections
- Abandon existing Sewerline K and L in place
- Completion: September 2019
- Cost: \$1.3 Million



Papakolea Sewer Improvements

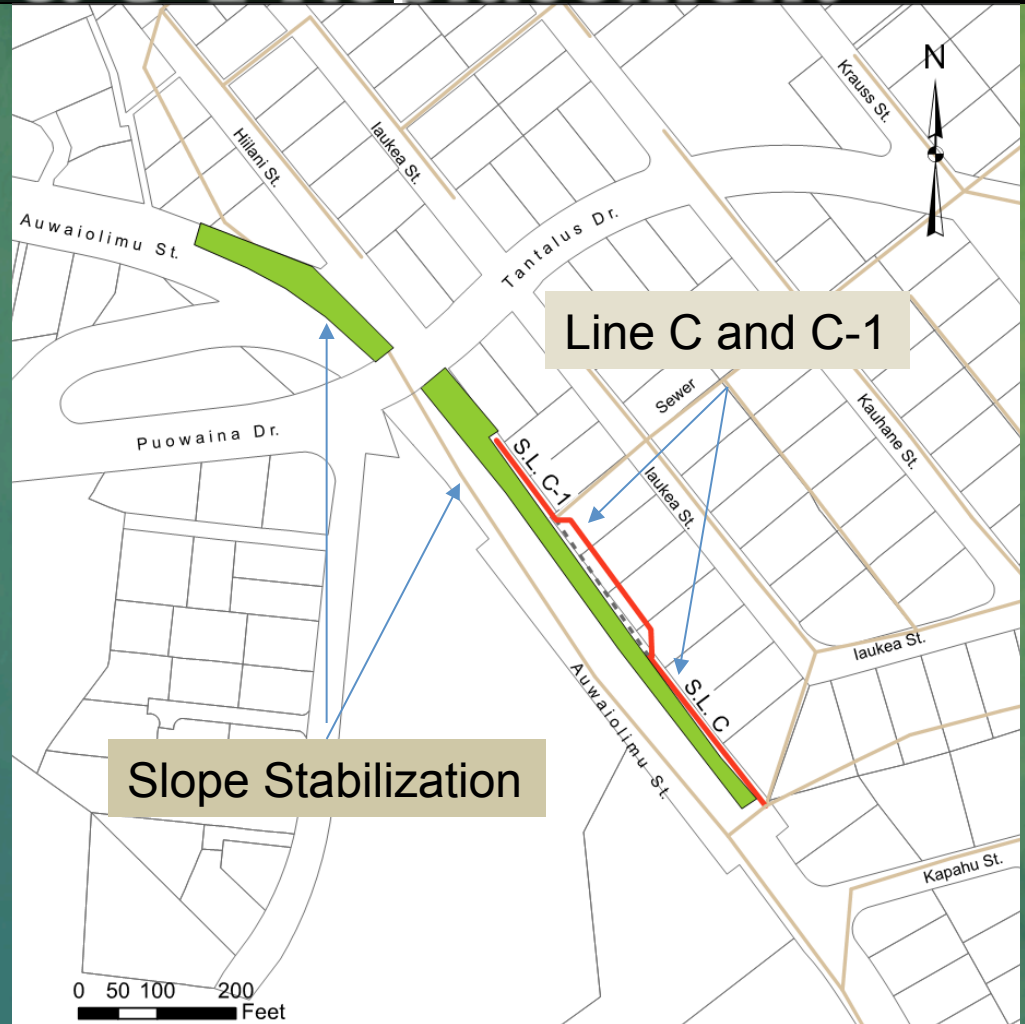
Slope Stabilization and Sewer Line C & C-1 Replacement

Slope Stabilization

- 34,000 square feet
- Completed June 2018
- Cost: \$4 Million

Sewer Line C & C-1

- Est. Completion August 2019
- 520 Linear feet, 8" pipe
- 5 New sewer manholes
- Cost: \$0.7 Million



Papakolea Sewer Improvements Slope Stabilization

Before Project



Fallen Rocks
Within
sidewalk
area



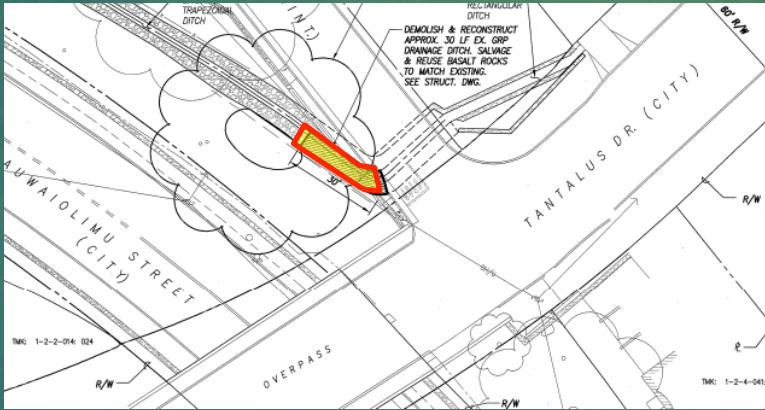
Papakolea Sewer Improvements Slope Stabilization

After



Drainage Ditch Rehabilitation

Original Scope - 30 LF



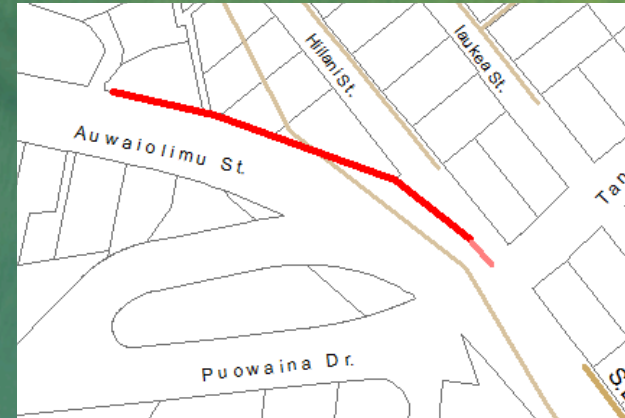
Before

During

After

Drainage Ditch Rehabilitation

Ditch is a historical architectural feature, and required restoration only.



Ditch Rehabilitation



Cost of 350 linear feet of drainage improvements: \$0.3 Million

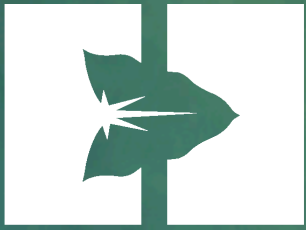
Future maintenance by DHHL



Papakolea Sewer Improvements

Sewer Easement Conditions

- Lessees shall allow contractors access to repair or replace sewerlines.
- Lessees shall not block, build nor plant trees over sewerline and other improvements.
- Any improvements over the sewerline will NOT be replaced by the City or DHHL, should repair work be required.
- Sewer lateral maintenance, including blockage remediation is the responsibility of the Lessee.
- Hawaiian Homes Commission approval required to amend approximately 46 leases with new sewer easements.



Department of Hawaiian Home Lands

Papakolea-Kewalo- Kalawahine

Unencumbered Lot Inventory

Hawaiian Homes Commission

Land Development Division

Item E-2 Workshop

July 15, 2019

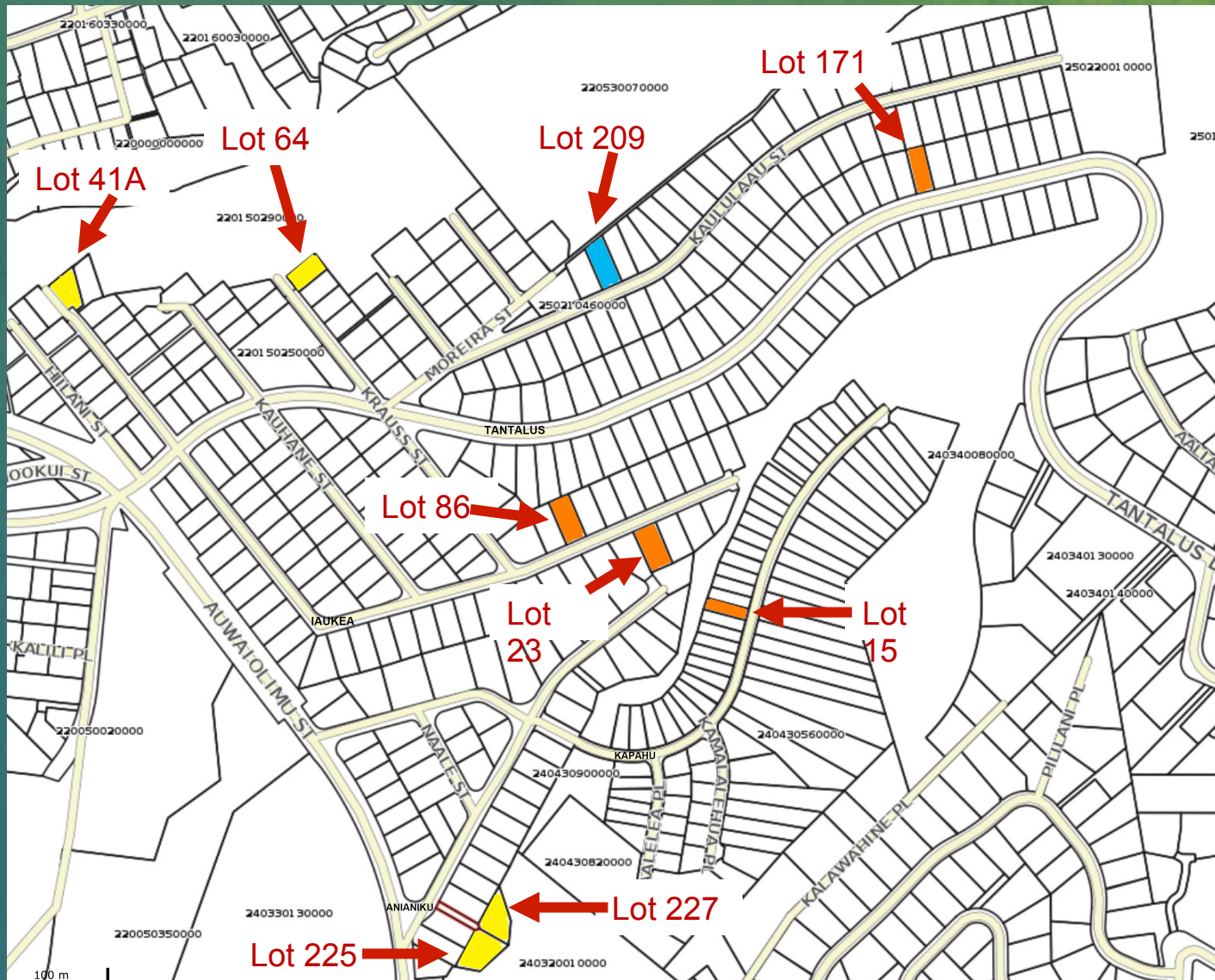
Lot Summary

As of 07/10/19

Area	Leased*	Unencumbered
Papakolea	61	2
Kewalo	251	6
Kalawahine Streamside	88	1
Kalawahine Place (Act 150)	4	0
Totals	404	9

*Note: 2 leased Kewalo lots in the process of final cancellation.

Area Map of Unencumbered Lots



Unencumbered Summary

Area	LOT NO.	STREET ADDRESS	category			Dwelling
			Lot Assessment	Prepare for Award	Offered	
Papakolea	64	454 KRAUSS ST	X			?
Papakolea	41A	424 IA UKEA ST	X			
Kewalo	225	ANIANIKU near AUWA IOLIMU ST	X			
Kewalo	227	ANIANIKU near AUWA IOLIMU ST	X			
Kewalo	23	739 IA UKEA ST		X		Y
Kewalo	86	720 IA UKEA ST		X		
Kewalo	171	2364 TANTALUS DR		X		
Kalawahine	15	2252 KAPAHU ST		X		Y
Kewalo	209	2250 KA ULULAAU ST			X	Y
TOTAL		9	4	4	1	

Lots Under Assessment

(lots 64, 41A, 225 & 227)

Lot 64



Lot 41A



Lot 225 and 227



Preparation for Award of Lots

(lots 86, 171, 15)

Lot 86



Lot 171



Lot 15



Lot Offering in Progress

(Lot 209)



Homestead Services Division

- Papakolea Community Association requested DHHL to investigate 30 lots.
- HSD research and inspection results:

Area	Research & Inspection Results					Total Lots Identified
	Occupancy Verified	Unencumbered *	Cancellation Process	Successorship Process	Lease Violation Process	
Papakolea	1	1	0	0	2	4
Kewalo	0	4	2	4	14	24
Kalawahine Streamside	1	1	0	0	0	2
TOTAL	2	*6 Lots included in the Unencumbered Summary chart	2	4	16	30



HAWAIIAN HOME LANDS
HAWAIIAN HOMES COMMISSION
DEPARTMENT OF HAWAIIAN HOME LANDS

Homestead Community Update



HAWAIIAN HOME LANDS
HAWAIIAN HOMES COMMISSION
DEPARTMENT OF HAWAIIAN HOME LANDS

Open House