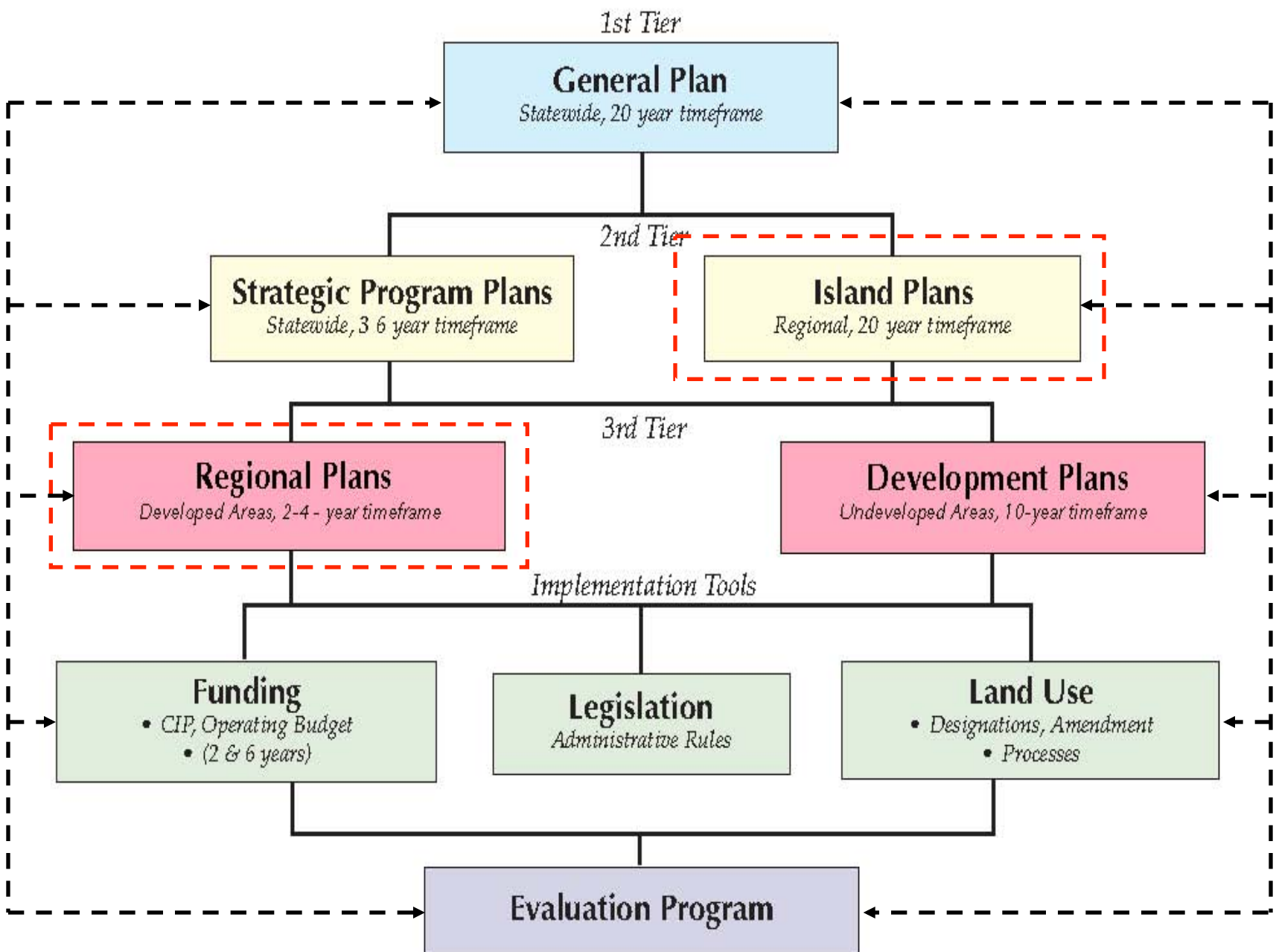




HAWAIIAN HOME LANDS  
HAWAIIAN HOMES COMMISSION  
DEPARTMENT OF HAWAIIAN HOME LANDS

**Item G-4**  
**West Hawai'i Regional**  
**Update to the Hawaiian**  
**Homes Commission**  
**(For information only)**



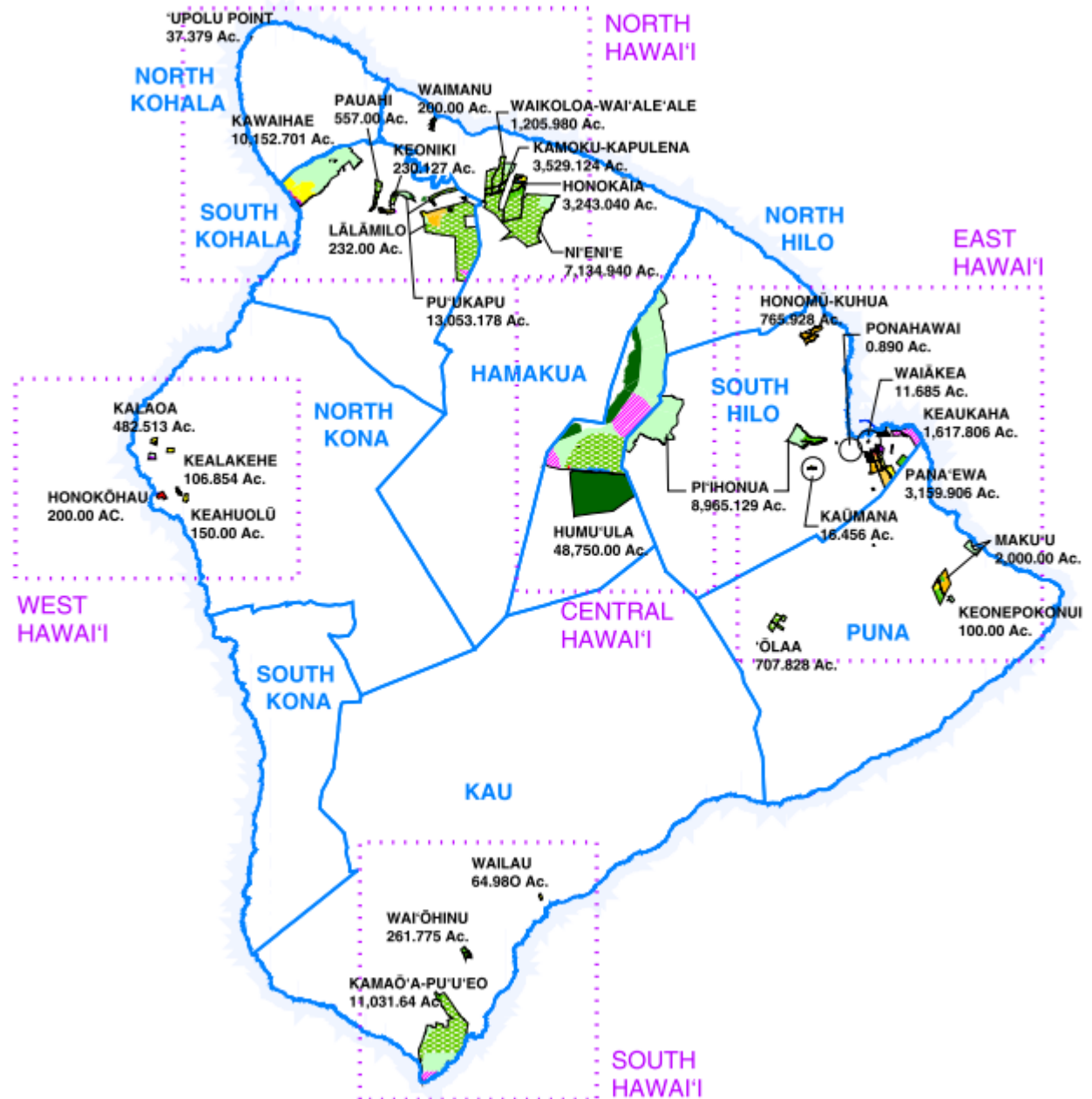
DHHL Planning System



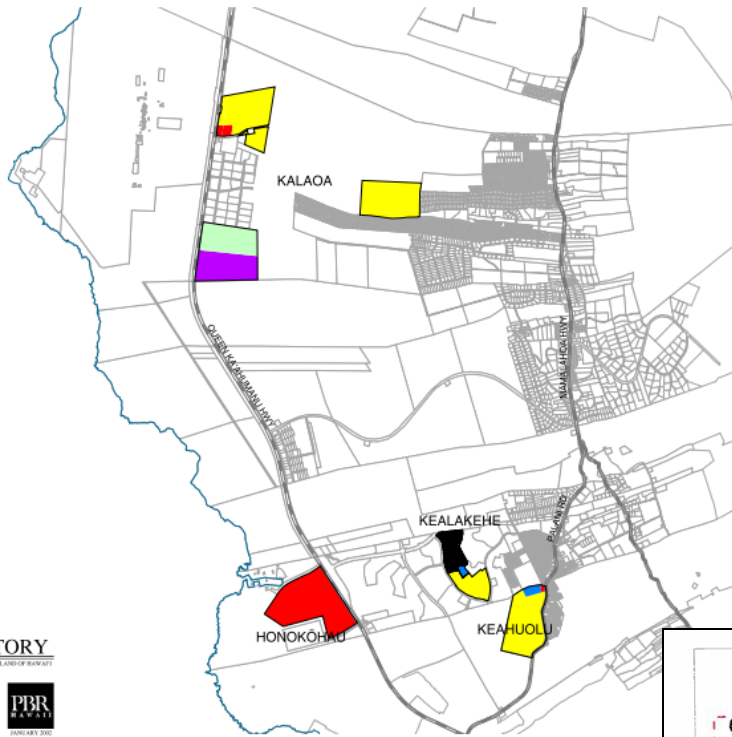
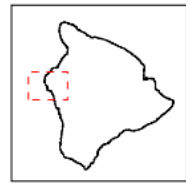
# Hawai'i Island



PBR  
May 2002



# 2002 Island Plan

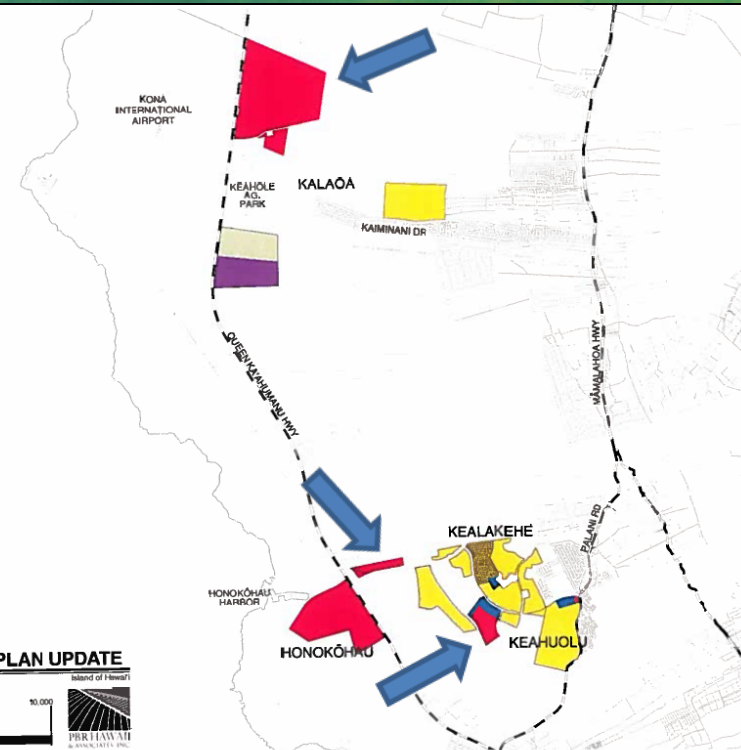
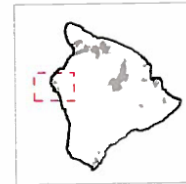


## Legend

Land Use Categories

- Commercial
- Community Use
- Conservation
- General Agriculture
- Industrial
- Pastoral
- Residential
- Special District
- Subsistence Agriculture
- Supplemental Agriculture

Figure 8  
WEST HAWAI'I  
HAWAI'I LAND INVENTORY  
DEPARTMENT OF HAWAIIAN HOME LANDS  
ISLAND OF HAWAII  
NORTH  
LINEAR SCALE (FEET)  
0 2,500 5,000  
PBR  
2009 MAY 2002



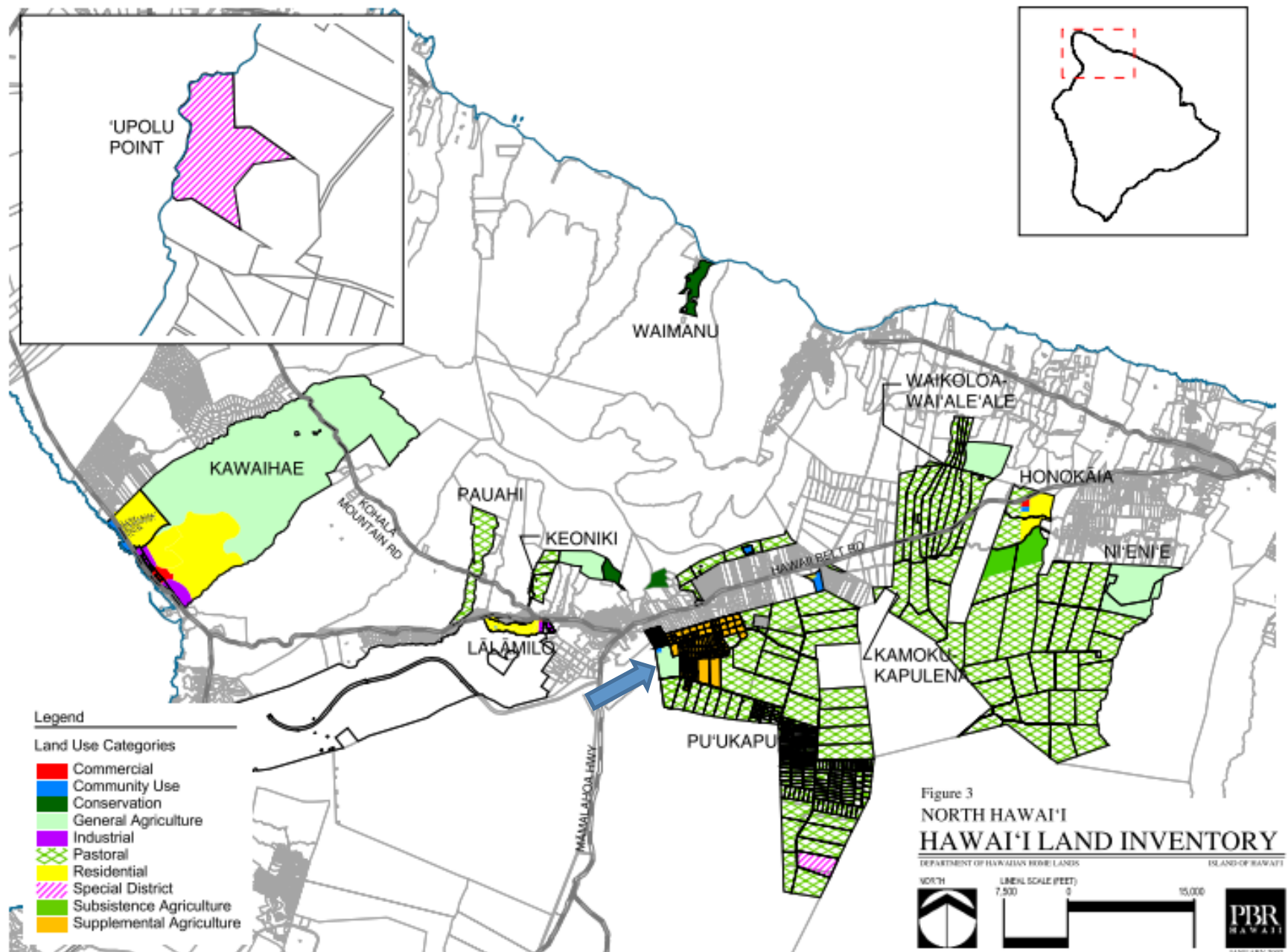
## Legend

Land Use Categories

- Commercial
- Community Use
- Conservation
- General Agriculture
- Industrial
- Pastoral
- Residential
- Special District
- Subsistence Agriculture
- Supplemental Agriculture

Figure 4  
Added Land Inventory  
WEST HAWAI'I ISLAND PLAN UPDATE  
DEPARTMENT OF HAWAIIAN HOME LANDS  
ISLAND OF HAWAII  
NORTH  
LINEAR SCALE (FEET)  
0 2,500 5,000 10,000  
PBR  
2009 MAY 2002

# 2009 West Hawai'i Update





# West Hawai'i Region Land Use Designations

Land Use Designation	Acres	Percent of Total
Residential Homestead	1,608	4.1%
Subsistence Agriculture Homestead	540	1.3%
Supplemental Agriculture Homestead	1,113	2.9%
Pastoral Homestead	24,101	62.4%
Community Use*	258*	0.6%
General Agriculture*	10,747*	27.8%
Commercial	230	0.5%
Industrial	384	0.9%
Conservation	391	1%
Special District	266	0.6%
<b>TOTAL</b>	<b>38,638</b>	<b>100%</b>

\* Does not reflect the Land Use Designation amendment of 161 acres from General Agriculture to Community Use



# West Hawai'i Regional Plans

## KEALAKEHE - LA'I 'ŌPUA



### REGIONAL PLAN

NOVEMBER 18, 2009



DEPARTMENT OF HAWAIIAN HOME LANDS

## WAIMEA NUI REGION



JANUARY 2012



HAWAIIAN HOME LANDS TRUST  
DEPARTMENT OF HAWAIIAN HOME LANDS

## KAWAIHAE



### REGIONAL PLAN

September 2010



# Kealakehe-La'i'öpua Regional Plan



## Priority Projects:

- North Kona Water Source Development and Storage
- Continued Support of La'i'öpua 2020 Community Sustainable Projects
- Renewable Energy Initiative
- Kona Regional Park
- Burial Treatment Plan for Inadvertent Discovery of Iwi Kūpuna



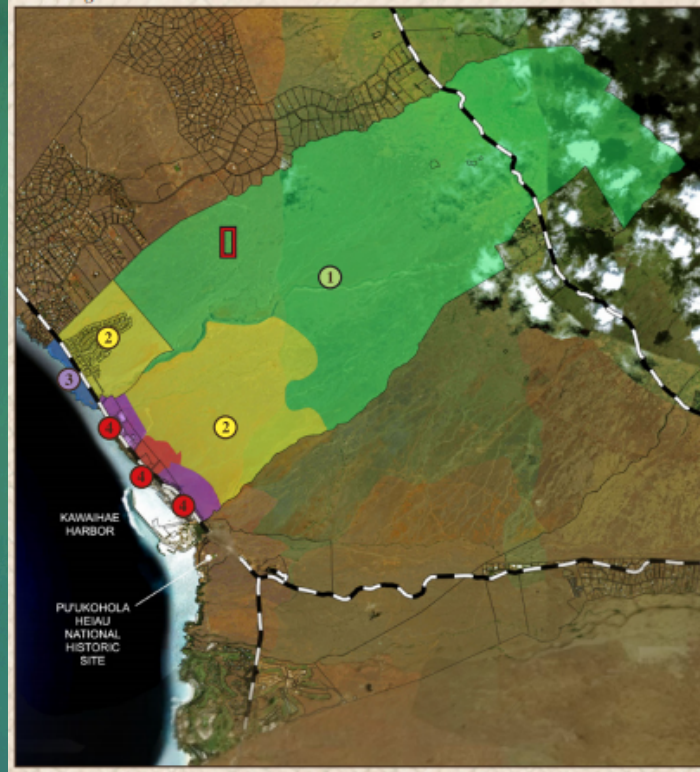
# Conceptual Plan



The Conceptual Plan recommends developing a Community Center at La'i Ōpua on the vacant parcel makai of Keanalehu Drive and adjacent to Kealakehe High School belonging to the Department of Hawaiian Home Lands to be leased and managed by the La'i Ōpua 2020 organization. The plan calls for new construction of approximately 80,000 square feet over an area of approximately 16 acres with future expansion potential.



# Kawaihae Regional Plan



## Priority Projects:

- Kailapa Resource Center
- Kawaihae Water and Energy Research and Development
- Kawaihae Bypass Highway
- Improve Marine Water at Pelekane Bay
- Management and Maintenance of Kawaihae Reinternment Site

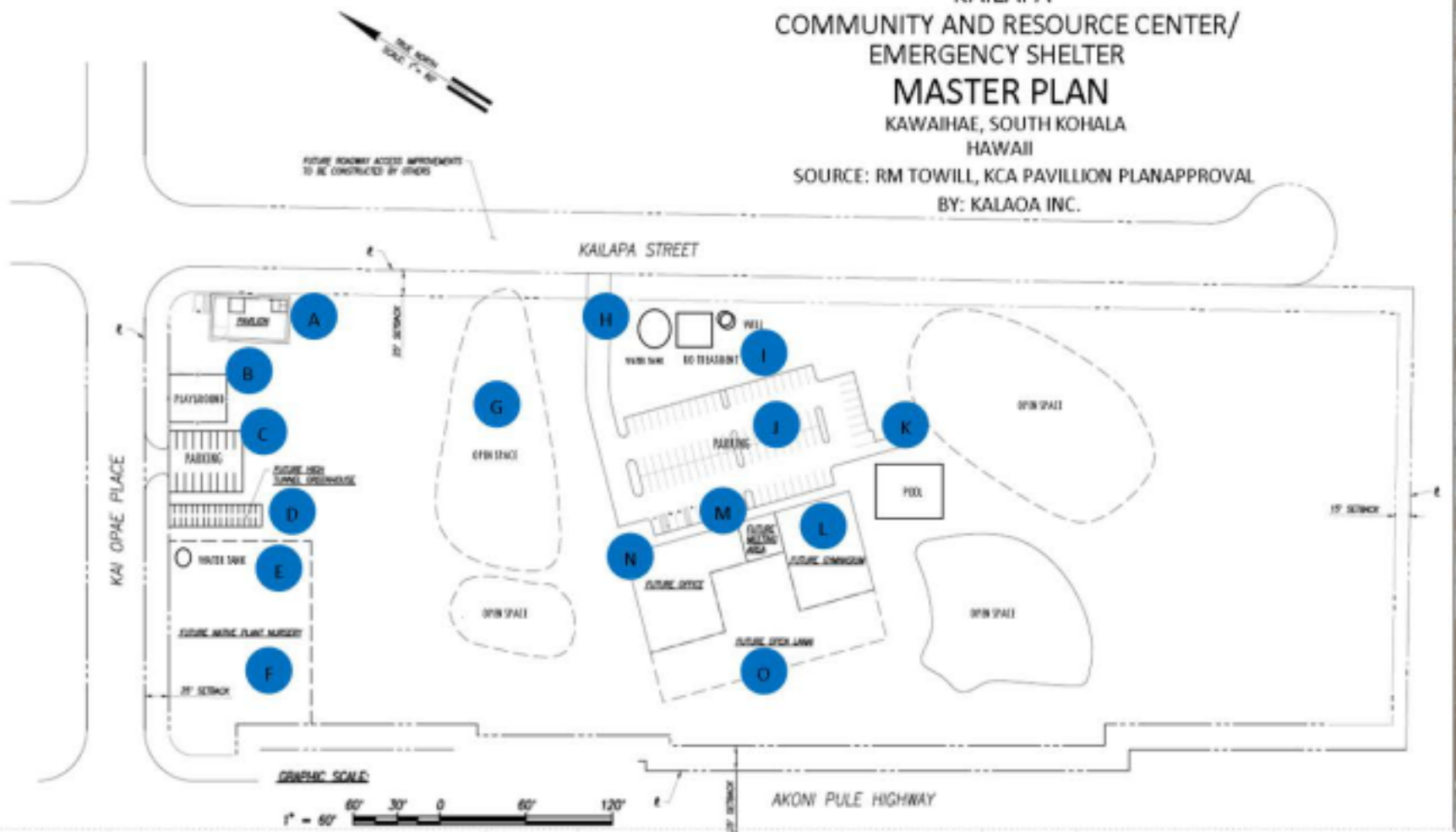


KAILAPA  
COMMUNITY AND RESOURCE CENTER/  
EMERGENCY SHELTER

## MASTER PLAN

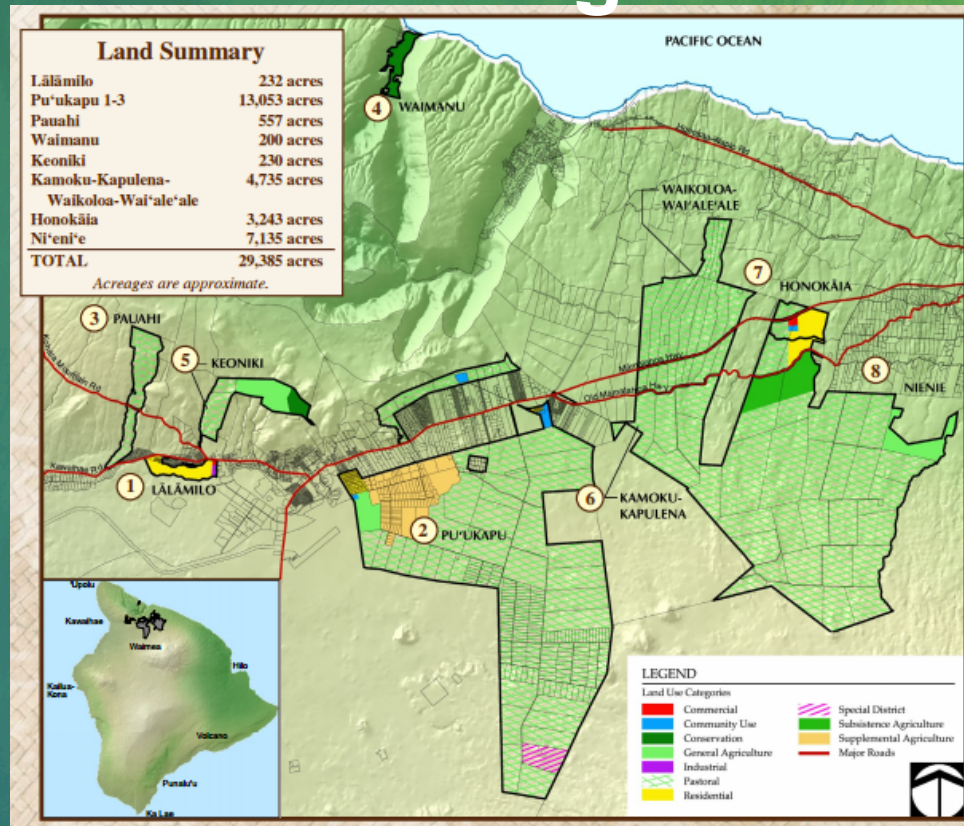
KAWAIIHAE, SOUTH KOHALA  
HAWAII

SOURCE: RM TOWILL, KCA PAVILLION PLAN APPROVAL  
BY: KALAOA INC.



A	Pavilion	F	Future Native Plant Nursery	K	Pool
B	Playground	G	Open Space	L	Gymnasium
C	Parking	H	Water Tank	M	Future Meeting Area
D	High Tunnel Greenhouse	I	RO Treatment/Water Well	N	Future Office
E	Water Tank	J	Parking Area	O	Future Open Lanai

# Waimea Nui Regional Plan



## Priority Projects:

- Waimea Hawaiian Homestead Community Complex – Planning
- Evaluate and Revise Agriculture / Pastoral Program Waimea Nui
- Support / Plan Development of Affordable Homestead Alternatives in Waimea Nui
- Assess the Implications of Eliminating Requirement to Pay Property Taxes
- Assess the Implications of a Non-Standard Building Code



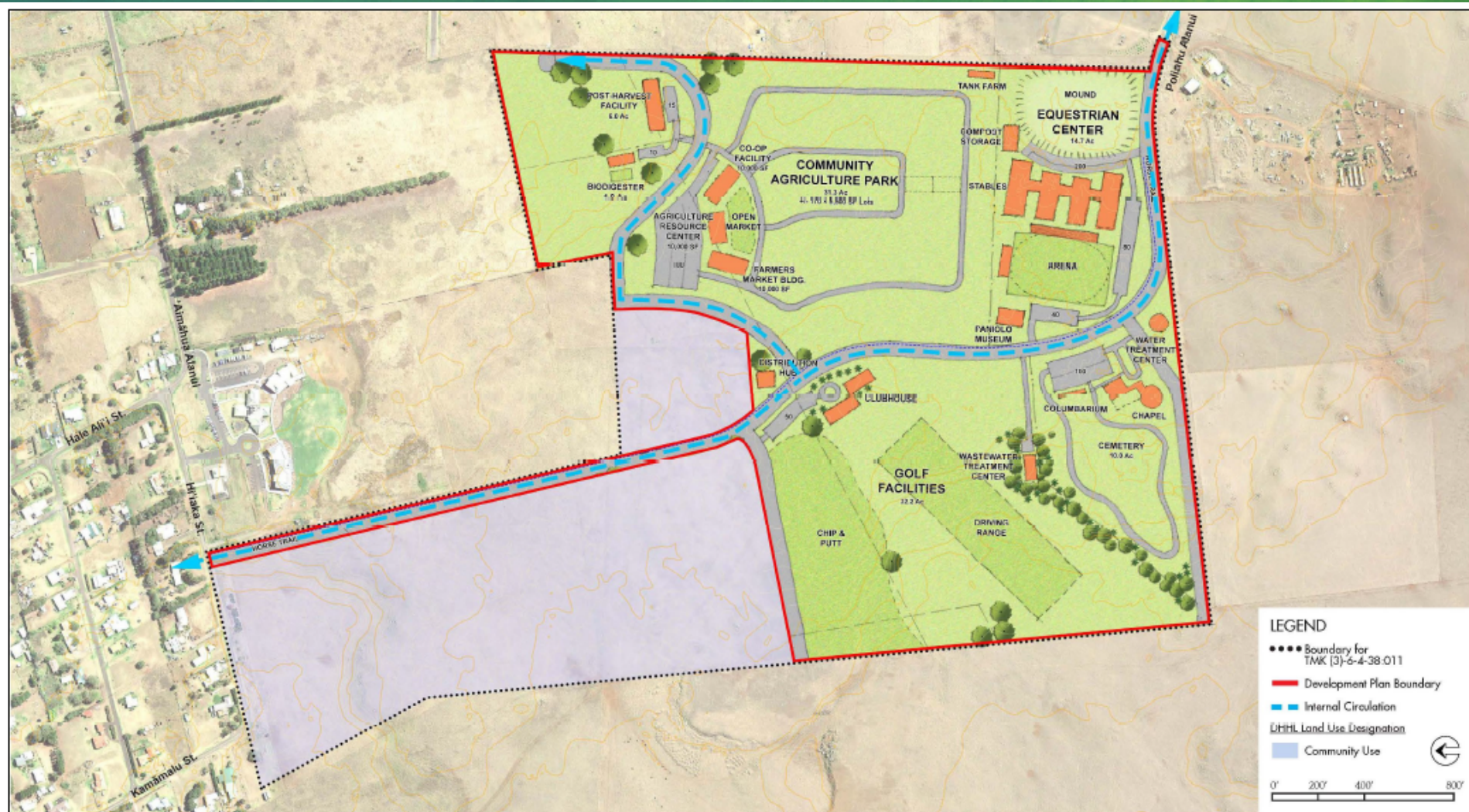



Figure 2-2: Waimea Nui Regional Community Development Initiative - Development Plan



# DHHL Water Policy Plan

In West Hawai'i, DHHL has an existing water reservation of 3.398 MGD for its existing foreseeable needs in the Keauhou Aquifer System Area.



 DHHL LANDS

WEST HAWAII AQUIFER BOUNDARIES





HAWAIIAN HOME LANDS  
HAWAIIAN HOMES COMMISSION  
DEPARTMENT OF HAWAIIAN HOME LANDS

***Mahalo!***