



Department of Hawaiian Home Lands

# **G-2. Acceptance of Beneficiary Consultation Report and Authorization to Request a Reservation Regarding EMI's Water Lease and DHHL's Water Reservation**

Andrew Choy, Acting Planning Program Manager  
Halealoha Ayau, Water Resource Management Specialist  
Jonathan Likeke Scheuer, Consultant

Thursday May 30, 2019, 10:00 am Paukūkalo Community Center



# Proposed Actions

1. **Accept the Beneficiary Consultation Report as the official record of beneficiary issues, questions, concerns, and comments regarding the East Maui Irrigation (EMI) Request for Water Lease from the Department of Land and Natural Resources (DLNR) and DHHL's proposed water reservation relating to the same; and**

# Proposed Action

2. Reauthorize the Chairman to formally request a water reservation from the Commission on Water Resource Management for Hawaiian Home Lands in Kēōkea, Waiohuli, and Pūlehunui, supplementing and clarifying the authorization given in Action 1 of item G-3 taken on August 10, 2015; and
3. Take other actions as necessary to effectuate these requests.



# Overview

- Review information shared in Beneficiary Consultation (Jonathan)
  - DLNR Leasing Process
  - DHHL interests in water leases
  - How DHHL calculates water needs
  - Proposed Request
- Review BC findings (Halealoha)
- Action Requested (Andrew)

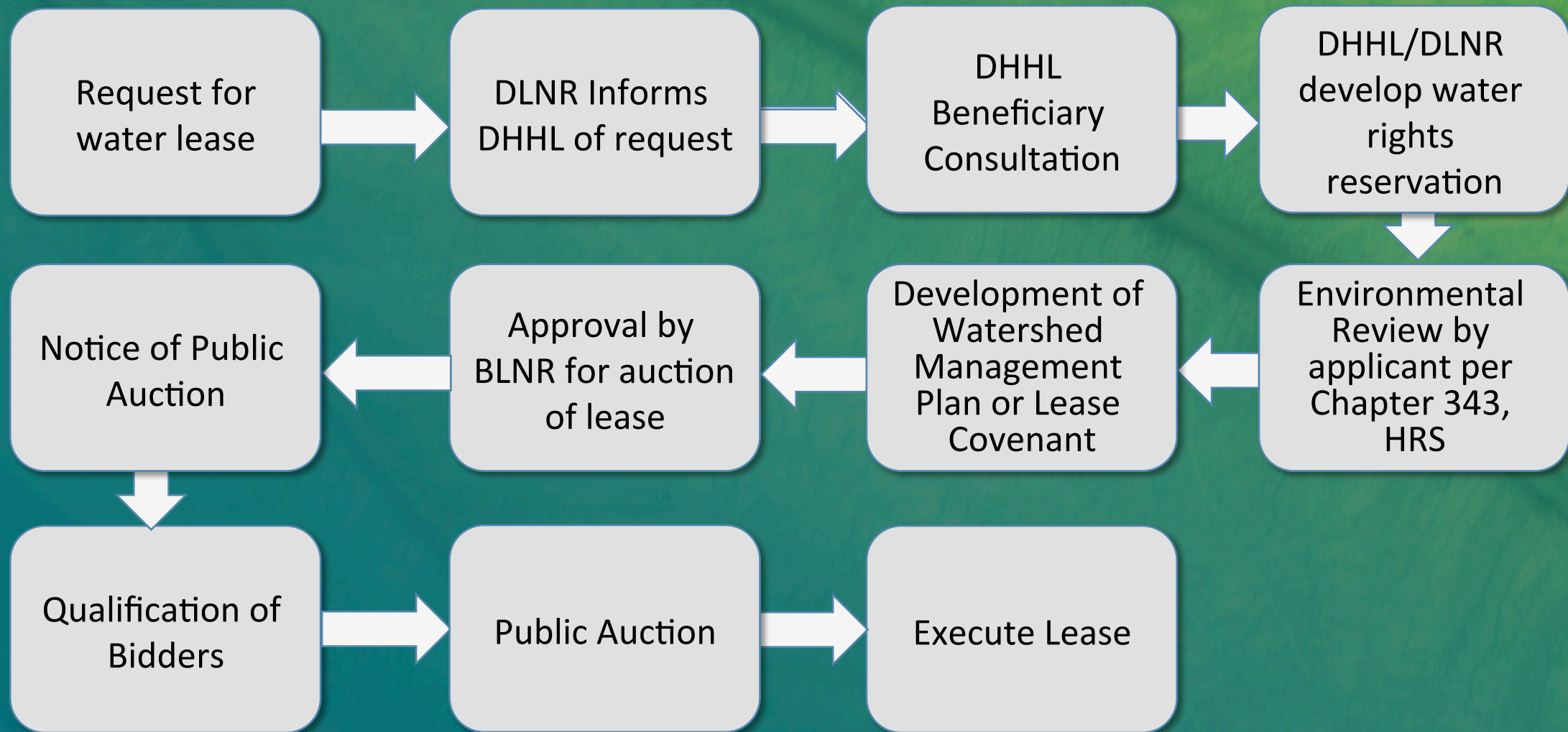
# Information Shared in BC

- DLNR Leasing Process
- DHHL interests in water leases
- How DHHL calculates water needs
- Proposed Request



# DLNR's Water Leasing Process

## Chapter 171-58, HRS



# DHHL's Interests In EMI Water Lease

## 1. Secure Water for Affected Lands

- Ke'anae fed by Pi'ina'au and Pālahuhulu
- Wailuanui fed by Wailuanui and Waiokamilo
- Kēōkea and Waiohuli--EMI is key source
- Pūlehunui--irrigated by EMI and brackish wells

## 2. Water License Revenue (30%)

- State Constitution, Article XII, Section 1
- 30% to the Native Hawaiian Rehabilitation Fund



# How Does DHHL Identify Water Needs?

## A. Guidance from DHHL's Planning System

- General Plan
- Water Policy Plan
- Maui Island Plan
- Regional Plans
- Development Plans

## B. Guidance from DLNR/CWRM

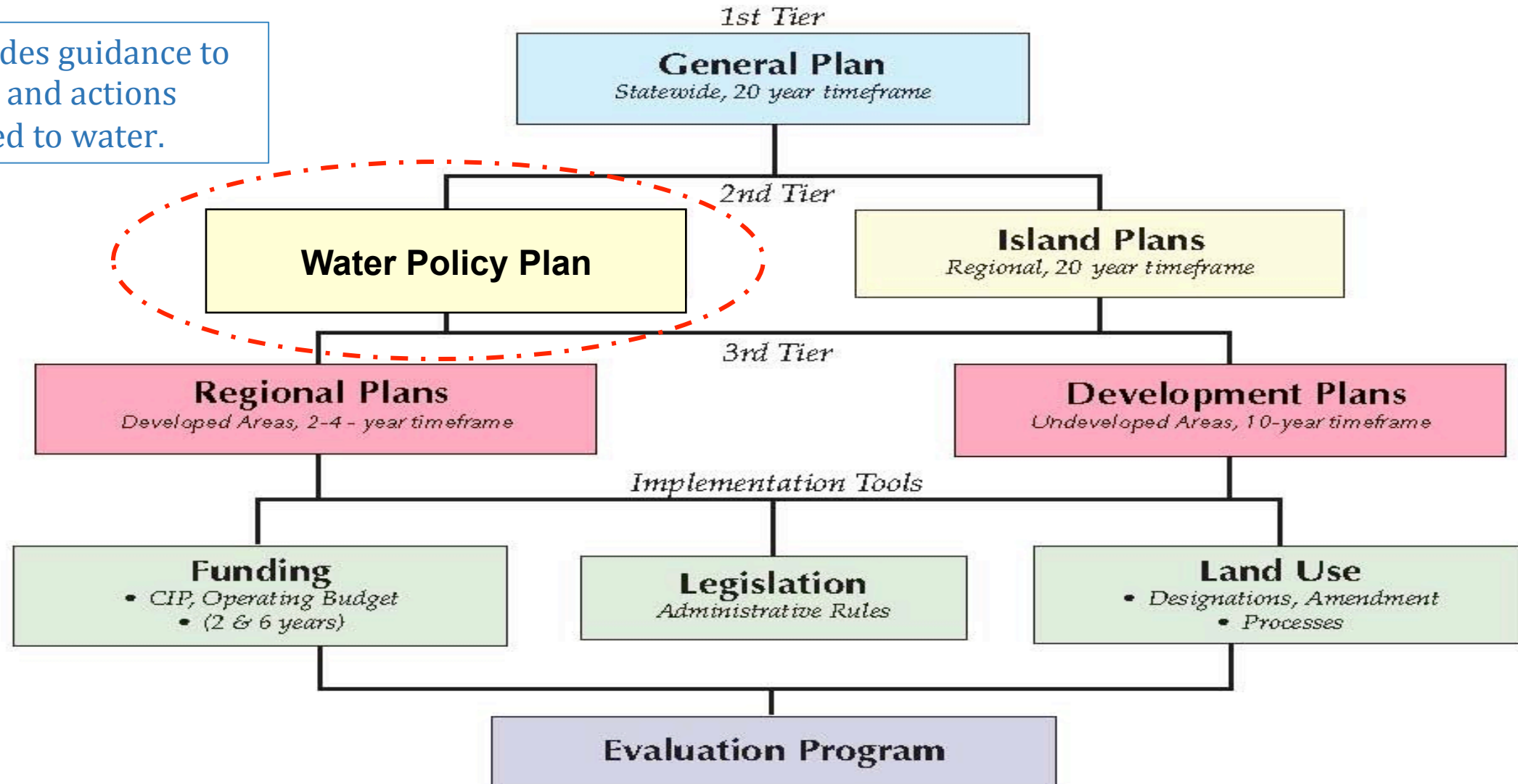
- State Water Projects Plan
- CWRM Groundwater Reservations



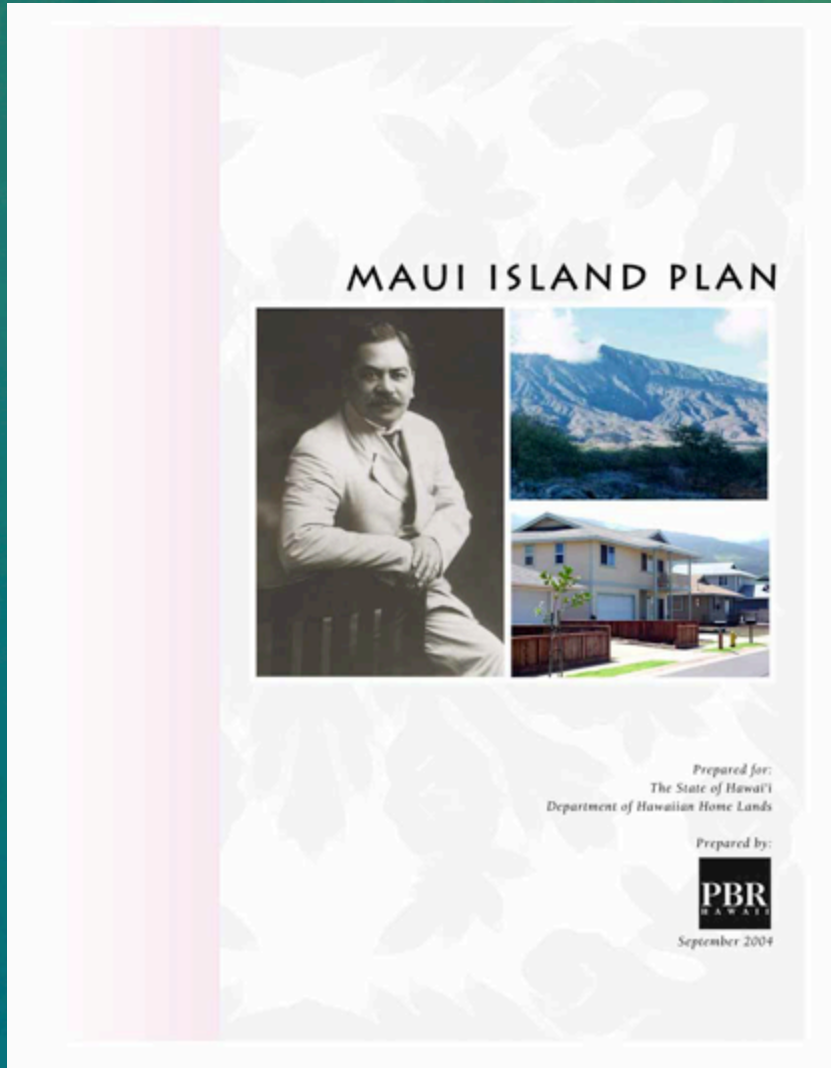
# DHHL Planning System

\*Hawai'i Administrative Rules  
§10-4-51 to §10-4-60

Provides guidance to  
plans and actions  
related to water.



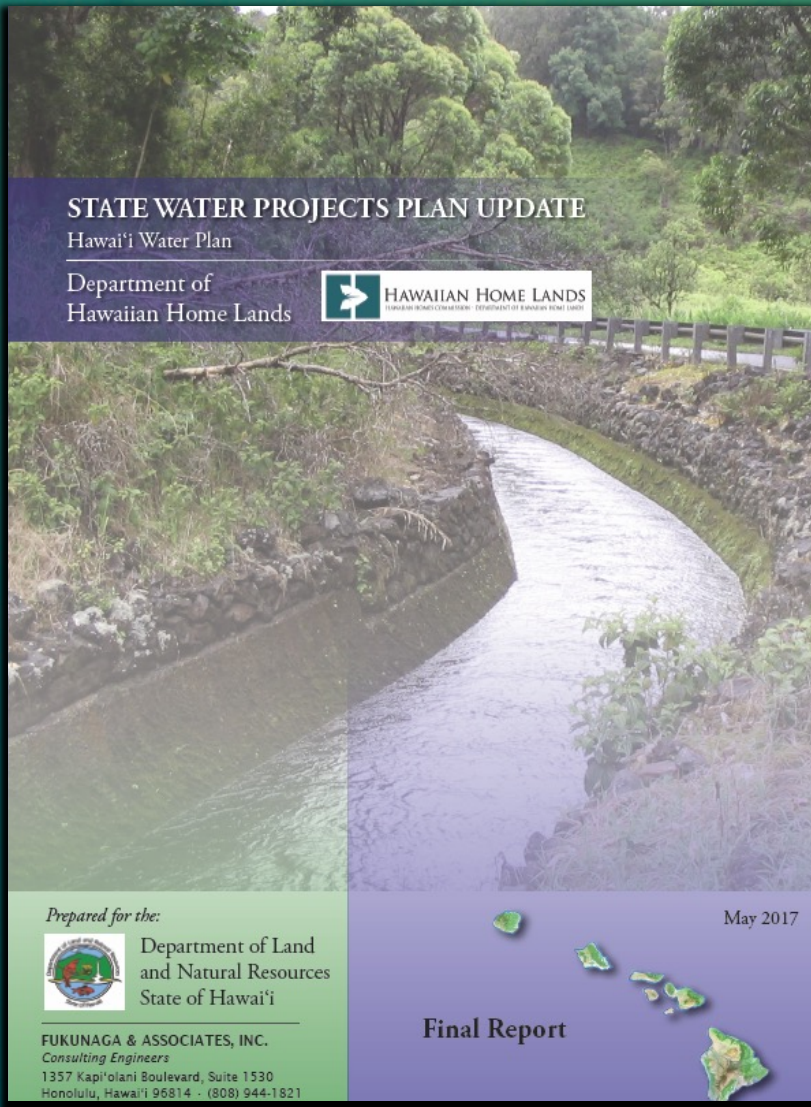
# Maui Island Plan (2005)



- 20 year time frame
- Identifies Land Use Designations for 31,000 acres on Maui
- Different land uses (e.g. subsistence agriculture, residential) have different water demands



# State Water Projects Plan (SWPP)



- Approved by Commission on Water Resource Management – May 2017
- Identifies DHHL Water Needs Over Next 20 Years
- Calculates Water Demand Based on DHHL Plans
- Notes Where Future Numbers Will be Refined

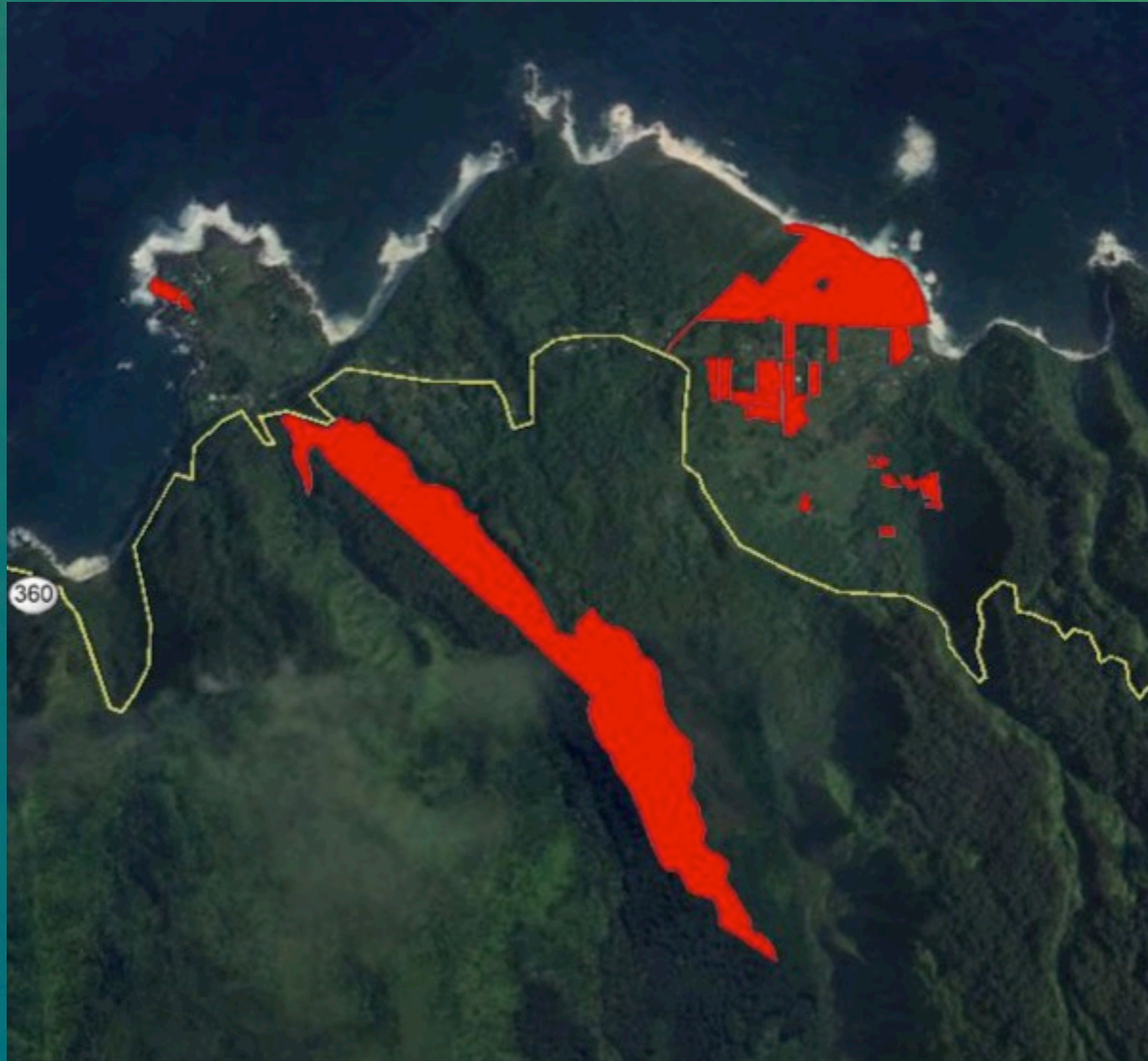


# Existing CWRM Reservations

- In September 2018 – CWRM reserved potable groundwater for DHHL lands based on the State Water Projects Plan.
- Potable Water Reserved in Areas Related to EMI:
  - 1,734,000 gpd for Pūlehunui
  - 813,000 gpd for Kēōkea-Waiohuli
  - 3,000 gpd for Ke‘anae-Wailuanui



# Ke'anae-Wailuanui

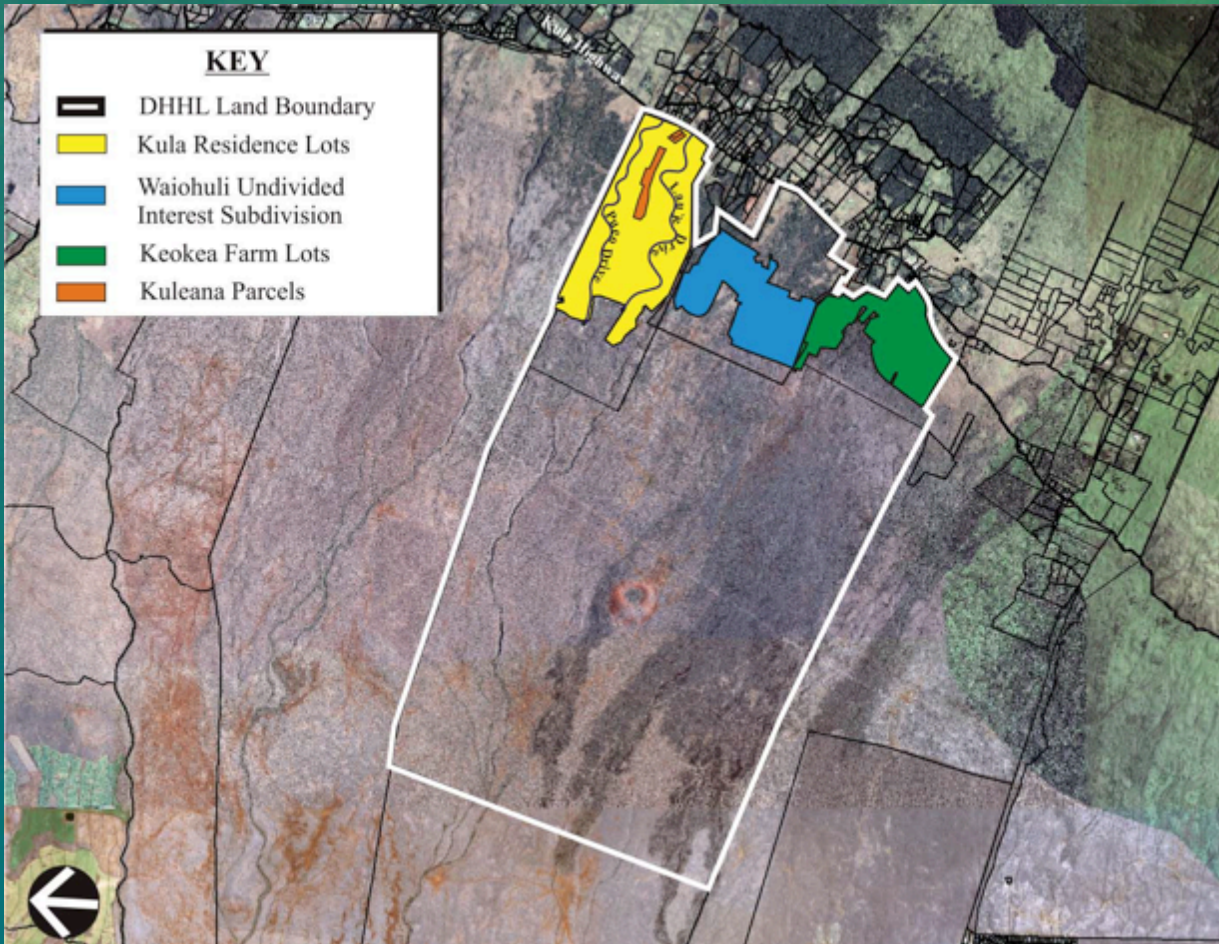


	Potable	Non-Potable	Total
Ke'anae	3,400	4,587,800	4,591,200
Wailuanui	6,600	2,280,200	2,286,800
Already Reserved	3,000		3,000
Potential Reservations	7,000	6,868,000	6,875,000

- Ke'anae is fed by Pi'ina'au and Pālahulu Streams; Wailuanui is fed by Wailuanui and Waiokamilo Streams. These streams were fully restored so no need to reserve non-potable water.
- Add Wailuanui potable (11 lots @ 600 gpd=6,600 gpd)
- Potential Reservations: 6,875,000 gpd



# Kēōkea-Waiohuli



Priority Project - Develop Water Source and Related Infrastructure for Agricultural and Residential Lots

Kēōkea-Waiohuli	Potable	Non-Potable
From SWPP	809,700	578,000
Already Reserved	813,000	
3,940 acs. Gen. Ag @2500		9,850,000
Adjusted Totals	-3,300	10,428,000

- No non-potable allocations for:
  - Existing Ag lots (425,000 gpd)
  - Gen. Ag of 3,940 acs. below homes (9,850,000 gpd)
- Potential Reservations: 10,275,000 gpd



# Pūlehunui

## PŪLEHUNUI REGIONAL INFRASTRUCTURE MASTER PLAN

### DRAFT ENVIRONMENTAL IMPACT STATEMENT

VOLUME I OUT OF II

Pūlehunui Ahupua'a, Kula Moku, Maui

#### PROPOSING AGENCY:



Department of Hawaiian Home Lands

#### PREPARED FOR:

Department of Hawaiian Home Lands  
Department of Land and Natural Resources  
Department of Accounting and General Services  
Department of Public Safety

#### ACCEPTING AUTHORITY:

Governor, State of Hawai'i

#### PREPARED BY:



Prepared pursuant to Chapter 343, Hawai'i Revised Statutes,  
and Chapter 11-200, Hawai'i Administrative Rules

NOVEMBER 2018

	Potable	Non-Potable
Pūlehunui	1,734,000	1,027,510
Already Reserved	1,734,000	
Adjusted Total	0	1,027,510

- Pūlehunui Regional Infrastructure Master Plan, Draft EIS submitted
- Includes Other Agencies
- New Community Visions
- Groundwater is brackish
- Potential Reservations: 1,027,510 gpd



# Beneficiary Consultation Questions

- Should DHHL's Reservation Request Include Only Non-Potable Uses?
- Where Should This Water Come From to Meet Those Water Needs?
- Are There Any Water Needs that DHHL Did Not Account For? What Are They?



# Beneficiary Consultation Process

- BC invitation letters
  - 487 Kēōkea and Waiohuli lessees
  - 2,180 Maui Agricultural Wait List applicants with Maui zip codes
- 23 signed in, approximately 35 in attendance

# Beneficiary Consultation Findings

DHHL's reservation request should

- Look at various and redundant water sources to meet water demands;
- Include a range of water demands based on increased land use or by meeting the needs of those on the waitlist;



# Beneficiary Consultation Findings

DHHL Should Continue:

- Participating in Chapter 343 EA/EIS process to ensure water quality and
- Advocating for fair market water lease rent so 30% revenues can be provided DHHL (NHRF)
- Ensuring conditions regarding water quantity use and limits are incorporated into the lease
- Working with DLNR to improve the process and develop criteria that protects DHHL's rights to water

# Proposed Action

1. **Accept the Beneficiary Consultation Report as the official record of beneficiary issues, questions, concerns, and comments regarding the East Maui Irrigation (EMI) Request for Water Lease from the Department of Land and Natural Resources (DLNR) and DHHL's proposed water reservation relating to the same; and**



# Proposed Action

2. Reauthorize the Chairman to formally request a water reservation from the Commission on Water Resource Management for Hawaiian Home Lands in Kēōkea, Waiohuli, and Pūlehunui, supplementing and clarifying the authorization given in Action 1 of item G-3 taken on August 10, 2015; and
3. Take other actions as necessary to effectuate these requests.