



DEPARTMENT OF HAWAIIAN HOME LANDS

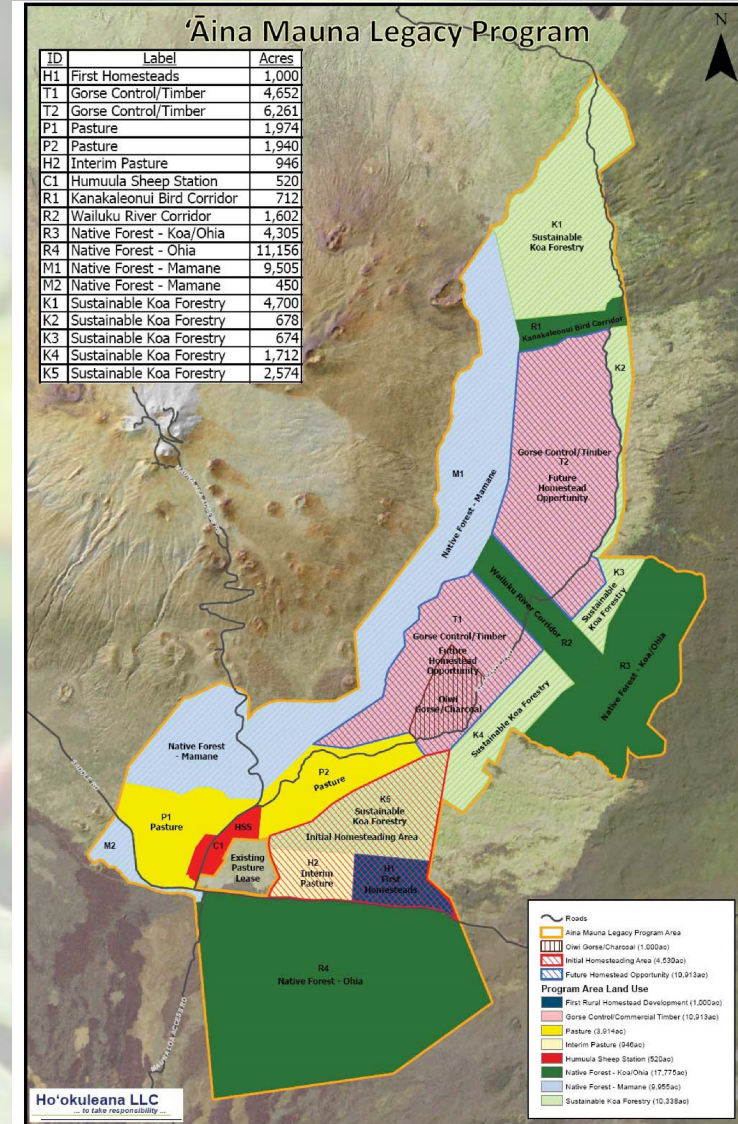
Authorization for Issuance of Land Licenses for the Aina Mauna Feral Cattle Removal Project Humuula and Piihonua Sections, Island of Hawaii

Hawaiian Homes Commission Meeting

May 20-21, 2019



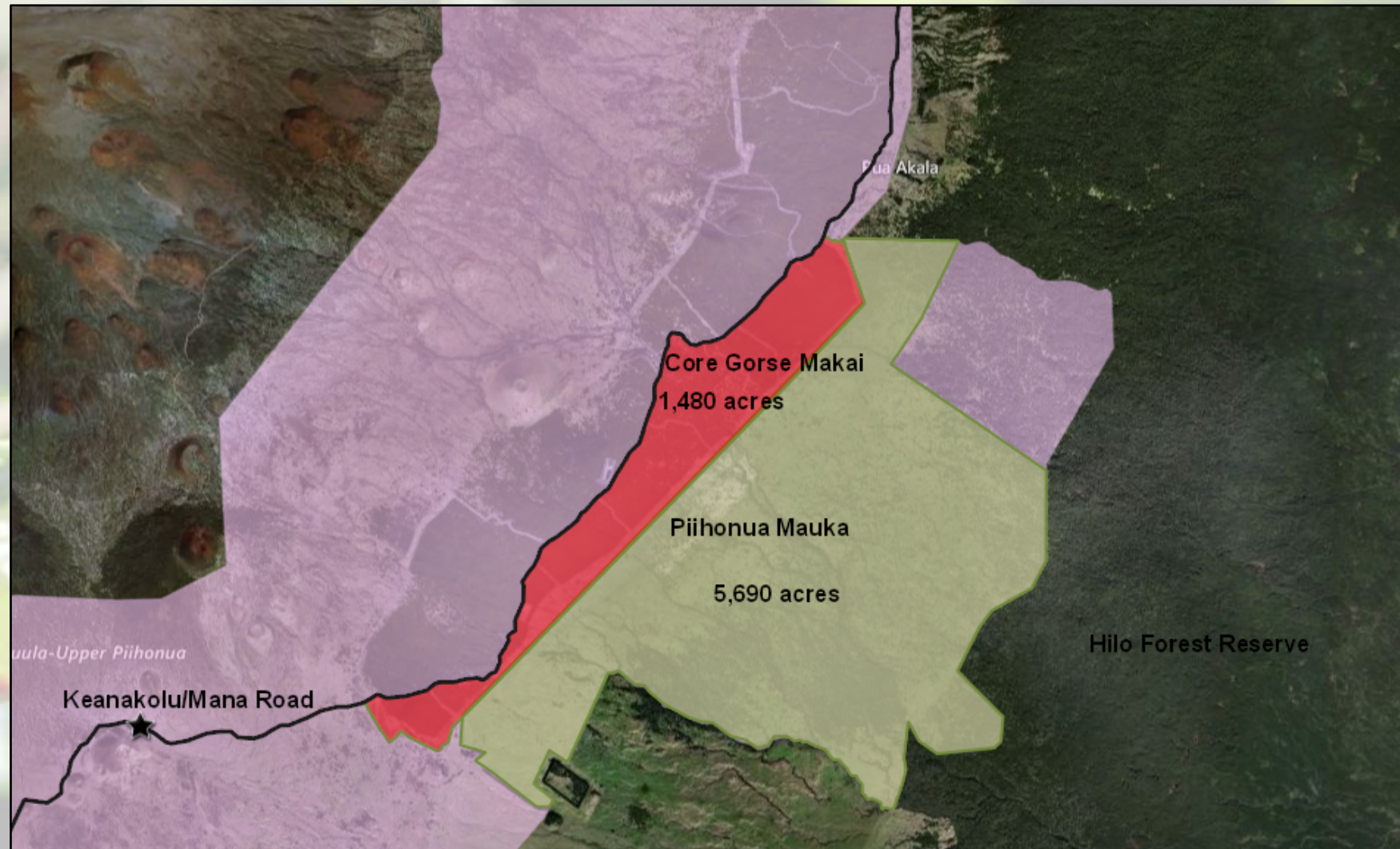
DEPARTMENT OF HAWAIIAN HOME LANDS





Piihonua Section

- 7,170 Acres
- 1,275 Cattle Remaining
- Zoned Agricultural, Conservation
- Large portion of remnant koa/ohia forest
- Planned uses: Sustainable koa forestry, Native koa/ohia reforestation, Timber for gorse control, Future homesteading opportunities.





-
- This aerial map of Mauna Kea State Park highlights three proposed conservation areas. The Hopuwai area, colored green, covers 3,072 acres. The Core Gorse area, colored red, covers 3,619 acres. The Laumaia Mauka area, colored blue, covers 6,144 acres. The map also shows Mauna Kea at 13,796 feet, Daniel K. Inouye Hwy, Keanakolu/Mana Road, and surrounding regions like HAKALAU and PAPAIKOU.





ULU KA OHIA, A LAU KA WAI



MAHALO



URGENCY OF CATTLE REMOVAL



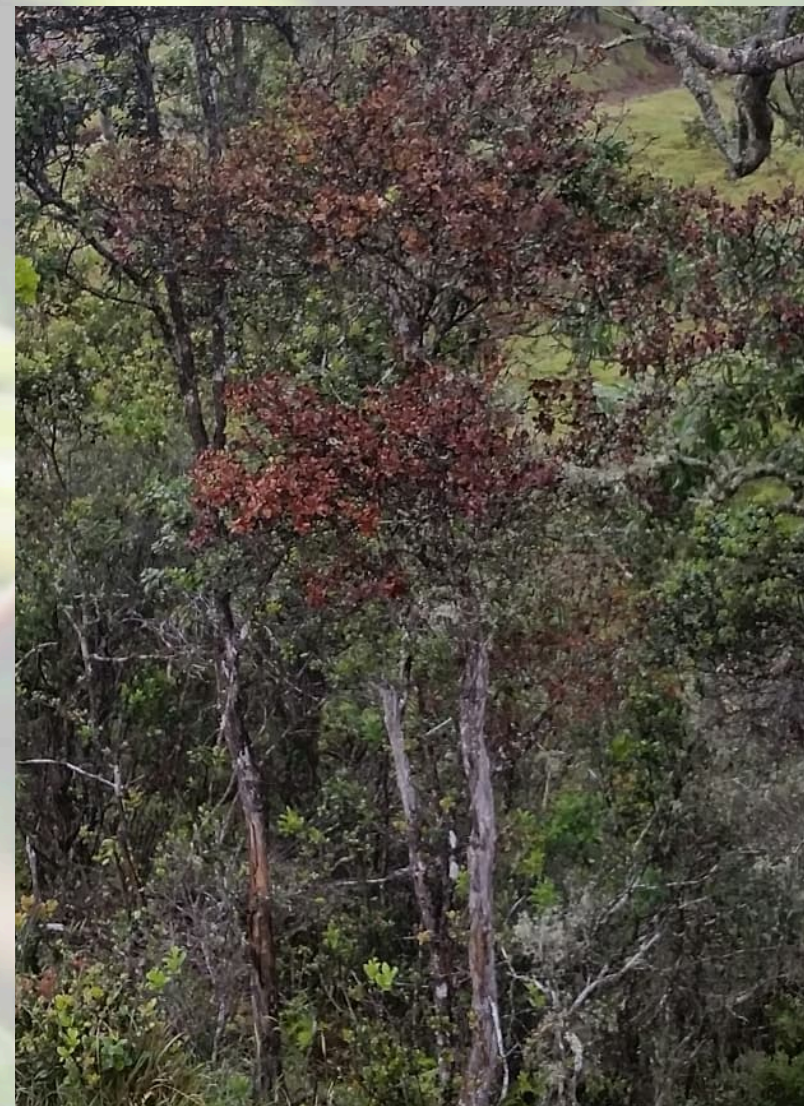
Strong link between cattle and the spread of Rapid Ohia Death



Cattle inhibits native forest restoration which makes land more susceptible to spread of gorse.



OHIA DAMAGE





Cattle Prohibits Koa Restoration





Feral Cattle Removal License

- LEGAL AUTHORITY
 - §204(a)(2), Hawaiian Home Commission Act, 1920, as amended
 - §171-54, Land License, Hawaii Revised Statutes, as amended
- SOLICITATION PROCESS
 - IN ACCORDANCE WITH **HRS 103D-303** COMPETITIVE SEALED PROPOSALS



Feral Cattle Removal License Selection Criteria

Beneficiary Feedback – Whoever receives the license, needs to provide benefits to beneficiaries

- “New RFP should have the requirement of delivering meat”
- “The meat from Humuula has been the best for our communities. It is a food resource.”



Feral Cattle Removal License Selection Criteria

- Previous 2010 Cattle Removal License Selection Criteria
 - Income to DHHL (price per head) 40% of score
 - Project Plan and Proposal (how are they going to remove cattle) 30% of score
 - Experience and Capability of Applicant 30% of score



Feral Cattle Removal Solicitation Selection Criteria

2010 Criteria

- Income to DHHL 40% of score
- Project Plan and Proposal 30% of score
- Experience and Capability of Applicant 30% of score

2018 Criteria

- Income to DHHL **10%** of score
- Project Plan and Proposal 30% of score
- Experience and Capability of Applicant 30% of score
- **Beneficiary Benefits 30% of score**



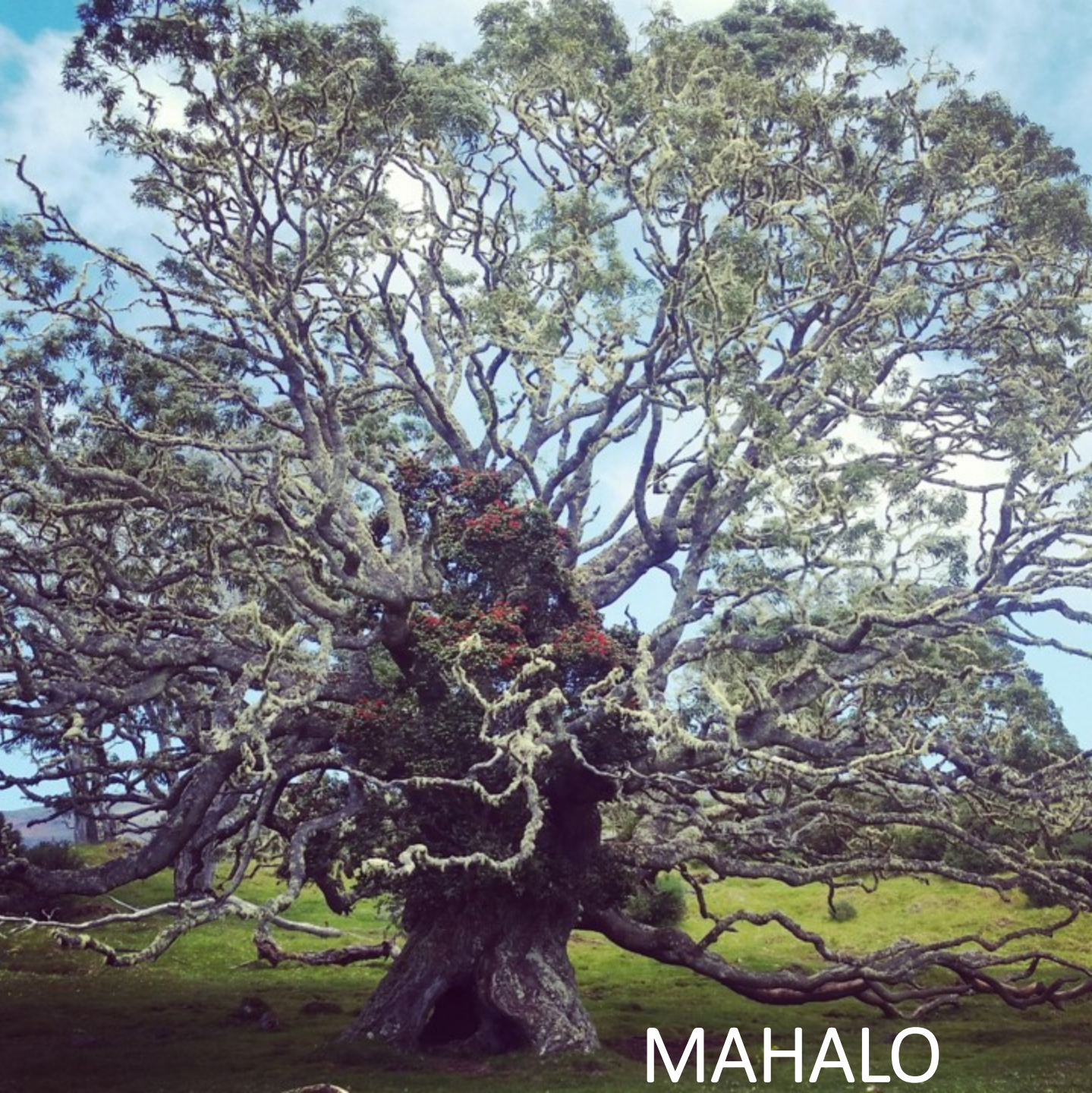
Strategies to Increase Success and Benefits to Trust

Strategy	Benefit
Issue 2 Feral Cattle Removal Licenses	<ul style="list-style-type: none">• Expedite Cattle Removal
Make Cattle Distributions to Beneficiaries a Criteria of Licenses	<ul style="list-style-type: none">• Incentivise Maximum Cattle Distribution to Beneficiaries• Provide Different Types of Resources to Beneficiaries
Accurate Ungulate Survey	<ul style="list-style-type: none">• First accurate population Data• Identified Cattle Numbers and Locations• 1,275 Cattle in Piihonua, 450 Cattle in Humuula
Create Clear Target Numbers for Successful Removal	<ul style="list-style-type: none">• Estimated 34% annual increase• 740 must be Removed per year from Piihonua• 260 must be Removed per year from Humuula
Strategic Fences	<ul style="list-style-type: none">• Limit Cattle Movement into Forest Reserve – Untrappable• Prevent Re-Populating Cleared Areas



Feral Cattle Removal License Solicitation Process & Timeline

TIME FRAME	SOLCITATION PROCESS
OCTOBER 10, 2018	Request for Proposals (RFP) notification published in Hawaii County newspapers and on DHHL Website
OCTOBER 24, 2018	Site visit conducted with potential RFP applicants
NOVEMBER 2018	RFP applicants submit questions they have on the RFP and DHHL responded to questions
DECEMBER 3, 2018	Proposals are due
DECEMBER 4-20, 2018	Proposals were evaluated and scored by selection committee and recommendations made for two vendors
DECEMBER 28, 2018	Chairman approved recommendations of the selection committee
JANUARY 28-29, 2019	Hawaiian Homes Commission deferred decision on authorization of license(s) until next Hawaii Island meeting May, 2019
MAY 20-21, 2019	Seek Hawaiian Homes Commission authorization to enter into license agreement with the two selected vendors



MAHALO