

HAWAIIAN HOME LANDS
HAWAIIAN HOMES COMMISSION
DEPARTMENT OF HAWAIIAN HOME LANDS

Item G-3
Molokai Planning Projects Status
South Molokai Shoreline Erosion
Management Plan, Phase I
Kapa'akea & Kamiloloa-One Ali'i
Homestead Areas

Background

- | | |
|------------------|--|
| 2013-2014 | Planning Liaison/CZM Planner responded to requests from Molokai District Office to evaluate increasing incidents of shoreline erosion in Kapa'akea & Kalama'ula |
| May 2015 | UH-DURP Practicum Report, "Coastal Resilience for DHHL Communities" |
| Aug. 2015 | Molokai Coastal Homestead Resilience & Disaster Planning Workshop |
| 2016 | Funding approved by HHC for "Kapa'akea-Kamiloloa Shoreline Erosion Assessment" |
| July 2018 | Contract with PCH for "South Molokai Shoreline Erosion Management Plan" starts |

Coastal Resilience for DHHL Communities



A resource for the Department of Hawaiian Home Lands and its beneficiaries

Information to help officials and residents assess coastal hazards, enhance beneficiaries' disaster-readiness, improve management of the resource, and clarify jurisdictional issues.

Prepared by the Department of Urban and Regional Planning's Spring 2015 Practicum Team, University of Hawai'i at Mānoa

May 2015
Honolulu, Hawai'i

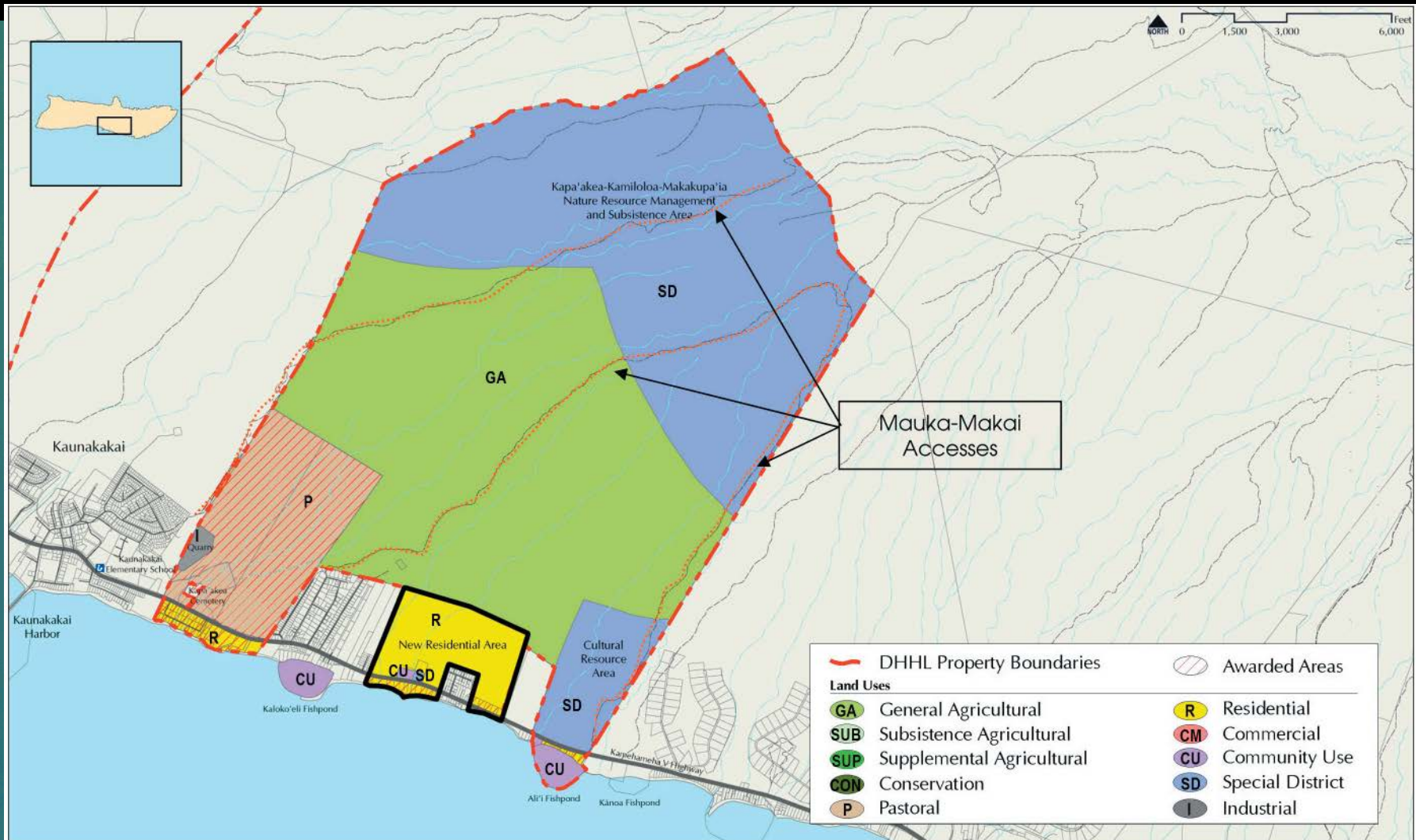


South Molokai Shoreline Erosion Management Plan (SM-SEMP)

Purpose of the project is to prepare a SEMP for the project area that will:

- Enable DHHL to proactively plan for and manage shoreline erosion;
 - Investigate underlying causes of shoreline erosion, and likely future progression
 - Identify effective and sustainable shoreline erosion management strategies that maintain natural processes and consider community needs; and
 - Educate the community as to the causes of shoreline erosion and appropriate management responses.
- ❖ Purpose IS NOT to develop a relocation or managed retreat plan

Molokai Island Plan – LUD's



Kapa'akea, Kamiloloa and Makakupa'ia - Residential homestead lots along the shoreline



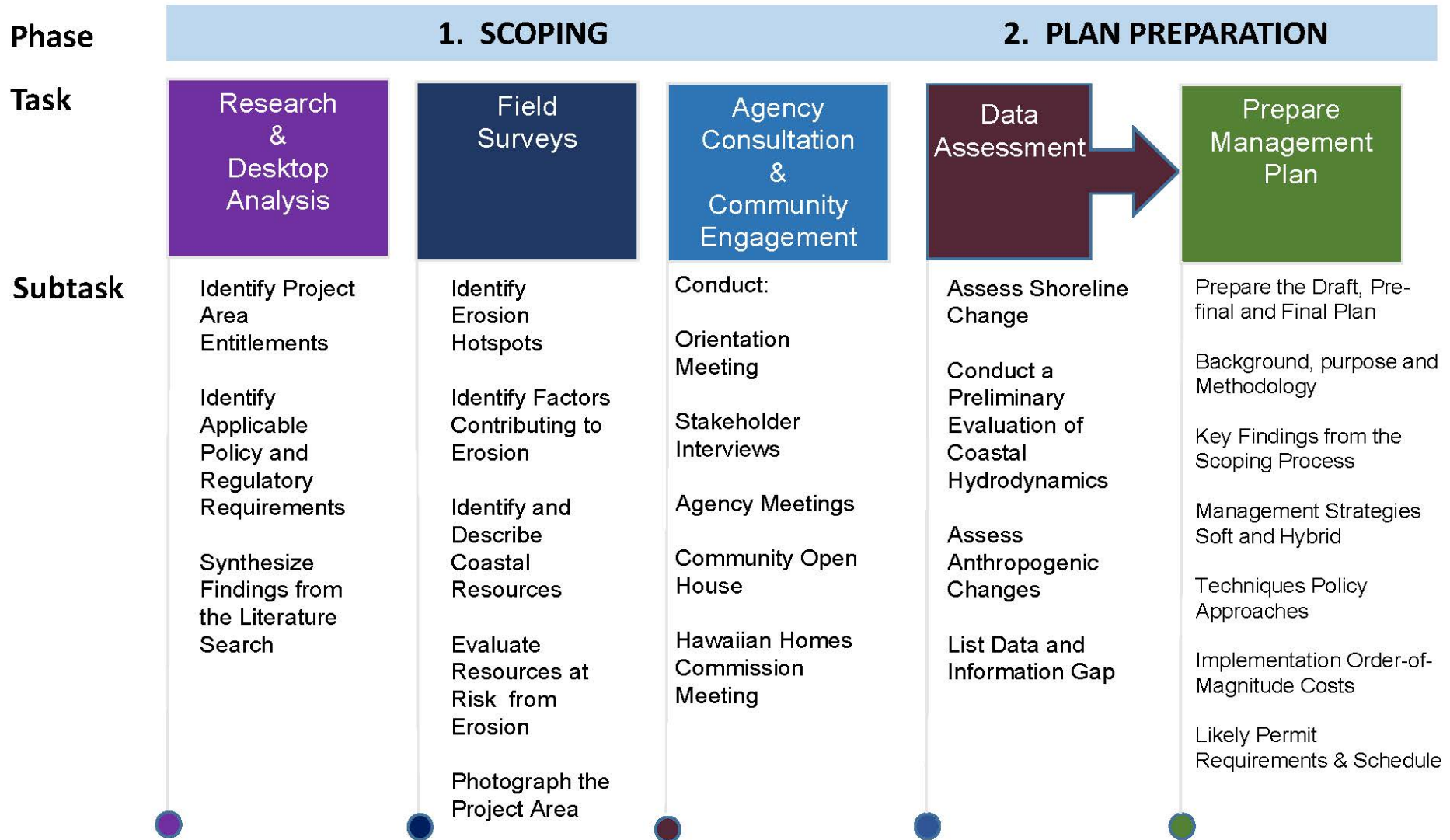
SM-SEMP Project

Key Tasks

Literature research and desktop analysis	Aug. 2018 – Feb. 2019
Field surveys of the project area Unmanned aerial systems (UAV) technology used to survey the coastline the week of November 1	Nov. 2018 – Feb. 2019
Community engagement <ul style="list-style-type: none">◆ Stakeholder/beneficiary interviews◆ Orientation meeting◆ Community open house◆ Hawaiian Homes Commission meeting briefings	Nov. 2018 – April 2020
Data assessment	May – Sept. 2019
Shoreline Erosion Management Plan preparation	Oct. 2019 – Apr. 2020

SM-SEMP Project

Planning Process



SM-SEMP Project Community Engagement

Conduct Key Stakeholder Interviews (homestead lessees living along the shoreline, cultural practitioners with Traditional Ecological Knowledge (TEK), appropriate State and County personnel, and adjacent land managers)	Jan. 30-Feb. 1, 2019
Project Orientation Meeting	Jan. 31, 2019
Community Open House Meeting	late Sept./early Oct. 2019
Hawaiian Homes Commission Meeting briefings	April 2019 and April 2020, others as needed
Shoreline Erosion Management Plan preparation	Oct. 2019 – Apr. 2020

Work Flow Schedule



1. Work Program and Schedule
Summer 2018



2. Research and Desktop Analysis
Fall 2018 to Winter 2019



3. Stakeholder Interviews
Winter 2019



4. Orientation Meeting
Winter 2019



5. Field Surveys
Winter 2019



6. Identify Alternative Mgmt Strategies
Winter / Spring 2019



7. Synthesize Data
Summer 2019



8. Community Open House
Fall 2019



9. Prepare Draft Plan
Winter 2019



10. Agency Consultation
Fall 2019 - Spring 2020



11. HCC Meeting
January 2020



12. Prepare Final MP
Spring 2020

DONE.

Ongoing DHHL Climate Change & SLR Adaptation Efforts

- Most recent PO update for HHC in June 2018 was Item G-4, “Update on DHHL Efforts in the Areas of Climate Change and Sea Level Rise Adaption, Community Resilience and Hazard Mitigation on Hawaiian Home Lands, Statewide” (Exhibit ‘C’)
- In 2017, State Climate Change Mitigation & Adaptation Commission (DHHL Chairman is a member) issued “Hawaii Sea Level Rise Vulnerability & Adaptation Report”; next meeting is April 24



Hawai'i Sea Level Rise Vulnerability and Adaptation Report



http://climate.hawaii.gov/wp-content/uploads/2019/02/SLR-Report_Dec2017-with-updated-disclaimer.pdf





Figure 71. Potential chronic flooding in the SLR-XA with 1.1, 2.0, and 3.2 feet of sea level rise in Kaunakakai and Kapa'akea, Moloka'i



Figure 72. Potential chronic flooding of the Kalama'ula Hawaiian Home Lands on Moloka'i (pink hatched area) in the SLR-XA (blue) with 3.2 feet of sea level rise

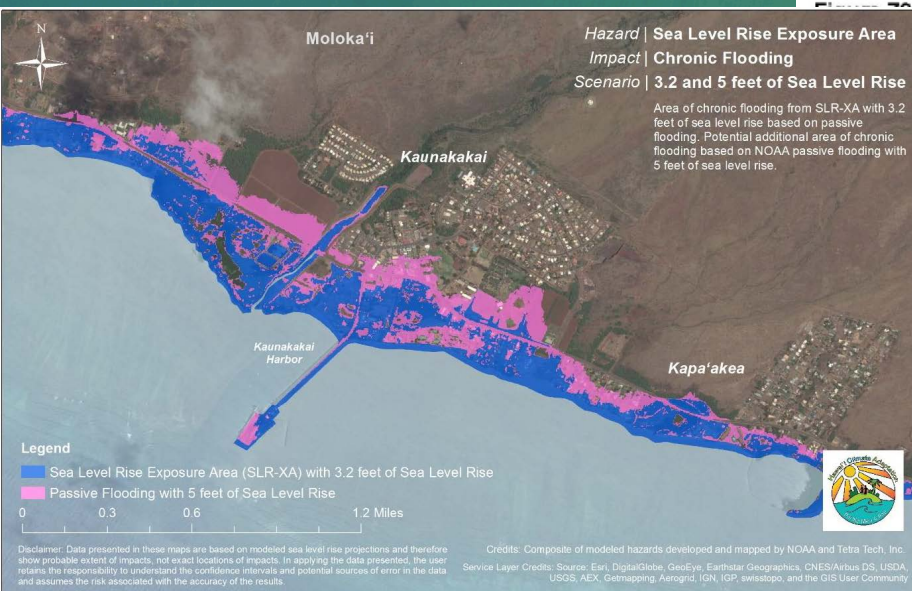


Figure 84. Potential additional area of chronic flooding with 5 feet of sea level rise in Kaunakakai, Kekaha, and Kapa'akea on Moloka'i

SLR-XA Maps

State-Level Initiatives

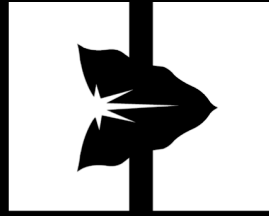
State Climate Commission

- **Act 32 signed by Governor Ige in 2016 - implements elements of Paris Climate Accord**
- **ICAC has now become Hawai'i Climate Change Mitigation & Adaptation Commission**
- **Commission adopted Hawaii Sea Level Rise Vulnerability & Adaptation Report Dec. 2017**
- **HHC Chairman & PO staff actively participating in next phase – policy development via 2019 legislative initiatives, ORMP Implementation**

Shoreline Erosion Management

Next Steps

- Kapa'akea & Kamiloloa-One Ali'i SM-SEMP Project
 - Planning team is currently processing data from interviews and fieldwork
 - Next update to the community will be via a newsletter in June 2019
 - Next SM-SEMP Community Meeting/Open House will present Draft Plan and get feedback from beneficiaries in September/October 2019
- Preliminary Activities, Kalama'ula SEMP
 - Planning Office budget request for the next fiscal year will include a SEMP project for Kalama'ula
 - Planning Office will be contacting shoreline lessees to do initial interviews the third week of April 2019
- Community Resilience Planning Workshops –
Summer/Fall 2020



HAWAIIAN HOME LANDS
HAWAIIAN HOMES COMMISSION
DEPARTMENT OF HAWAIIAN HOME LANDS

Questions?

Mahalo!