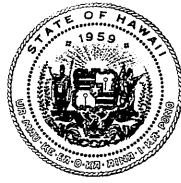


DAVID Y. IGE
GOVERNOR
STATE OF HAWAII

JOSH GREEN
LT. GOVERNOR
STATE OF HAWAII



JOBIE M. K. MASAGATANI
CHAIRMAN
HAWAIIAN HOMES COMMISSION

WILLIAM J. AILA, JR.
DEPUTY TO THE CHAIRMAN

**STATE OF HAWAII
DEPARTMENT OF HAWAIIAN HOME LANDS**

P. O. BOX 1879
HONOLULU, HAWAII 96805

March 27, 2019

Aloha mai kākou,

The Department of Hawaiian Home Lands (DHHL) invites you and your 'ohana to participate in the next community meeting as we continue to update the Regional Plan for all Moloka'i homestead communities. Beneficiary attendance and participation in this next meeting is critical because it is the community's opportunity to select the top five priority projects that are most important to Moloka'i homesteads. We will use the enclosed list of project ideas to select the priority projects. The list was generated by beneficiaries during the previous meetings. Mahalo to all those who have been participating thus far. For those who may be new to the regional plan process, included is a Fact Sheet and Timeline about the Regional Plan process. Also, a webpage has been set up on the DHHL website to view materials from the prior community meetings. We encourage you to review the materials and come prepared to select the projects that are the most important to you and the community.

DHHL website page for the 2019 Moloka'i Regional Plan
<https://dhhl.hawaii.gov/molokai-regional-plan-2019/>

Community Meeting #4 is set for Thursday, April 11, 2019. Enclosed are the agenda and materials to review prior to the meeting.

**Moloka'i Regional Plan Update – Community Meeting #4
Thursday April 11, 2019
5:00 PM – 8:00 PM
Kūlana 'Ōiwi Hālau - Kaunakakai**

We look forward to seeing you at the next meeting on April 11, 2019, and to continue to work collaboratively to make this regional plan for your community. Your participation is making a difference. If you have any questions, please contact Ms. Gigi Cairel in the DHHL Planning Office at (808) 620-9461 or by email at Gigi.O.Cairel@hawaii.gov.

Aloha and mahalo,

Jobie M.K. Masagatani
Chair, Hawaiian Homes Commission

Enclosures

Department of Hawaii Home Lands
Community Meeting #4 – DHHL Moloka‘i Regional Plan

Meeting Agenda

5:00 PM – 8:00 PM – April 11, 2019

Location: Kūlana ‘Ōiwi Hālau – Kaunakakai

Meeting Purposes

- To gather feedback on the Vision and Values for Moloka‘i homestead communities
- To go through a prioritization process to identify the top five priority projects

Desired Outcomes

By the end of tonight’s meeting, we will have:

- Reviewed the draft Vision and Values
 - Identified the priority projects
 - Common understanding on the Next Steps – what happens after tonight’s meeting?
-

- I. Pule
Aloha and Welcome
- II. Review draft Vision and Values
- III. Where we are with the List of Projects
- IV. Identify the Priority Projects
- V. Next Steps
 - a. Report to the Hawaiian Homes Commission on the progress of the Regional Plan – April 15 – 16, 2019 CONFIRMED
 - b. Prepare draft of the Regional Plan then review at the next community meeting
Estimate: June or July 2019
 - c. Review second draft of the Regional Plan, if needed – *Estimate: September 2019*
 - d. Final draft of the Regional Plan forwarded to the Hawaiian Homes Commission for approval – *Estimate: November 2019*



HAWAIIAN HOME LANDS TRUST
DEPARTMENT OF HAWAIIAN HOME LANDS

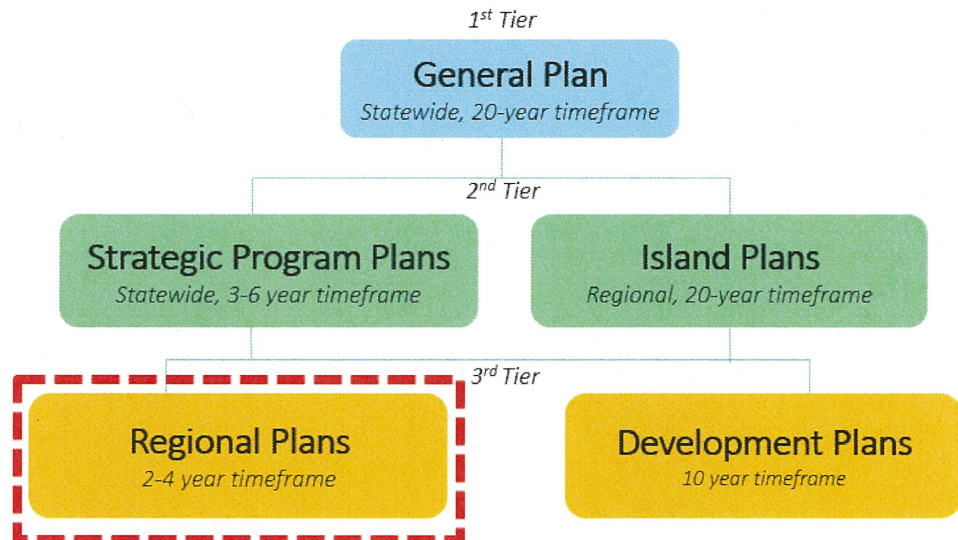
REGIONAL PLAN UPDATE

Island of Molokaʻi

The Molokaʻi Regional Plan is one of twenty-two regional plans the Department of Hawaiian Home Lands (DHHL) has developed state-wide. DHHL regional plans function as a means to develop partnerships, pursue resources (including funding), and coordinate action in each community. Regional plans also identify key priority projects that are defined and implemented by the community and are essential in moving community improvement projects forward.

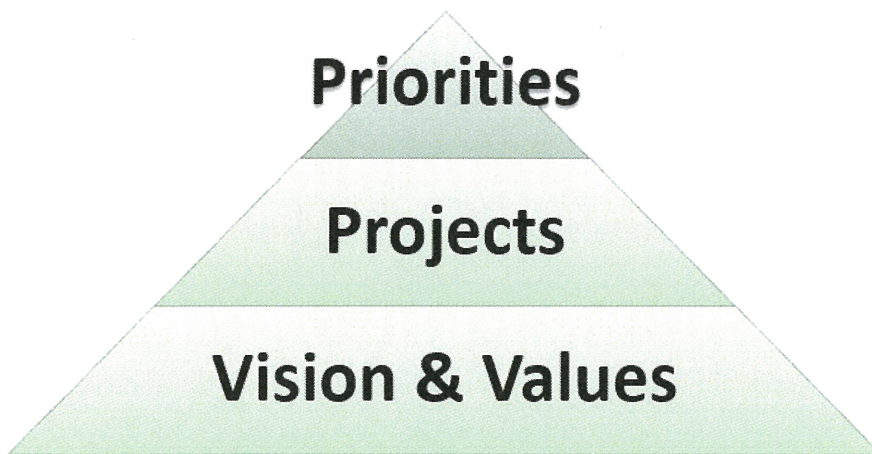
The existing Molokaʻi Regional Plan was completed in 2010 and is being updated to reflect the needs, vision, and values important to the Molokaʻi homestead communities.

DHHL'S PLANNING SYSTEM



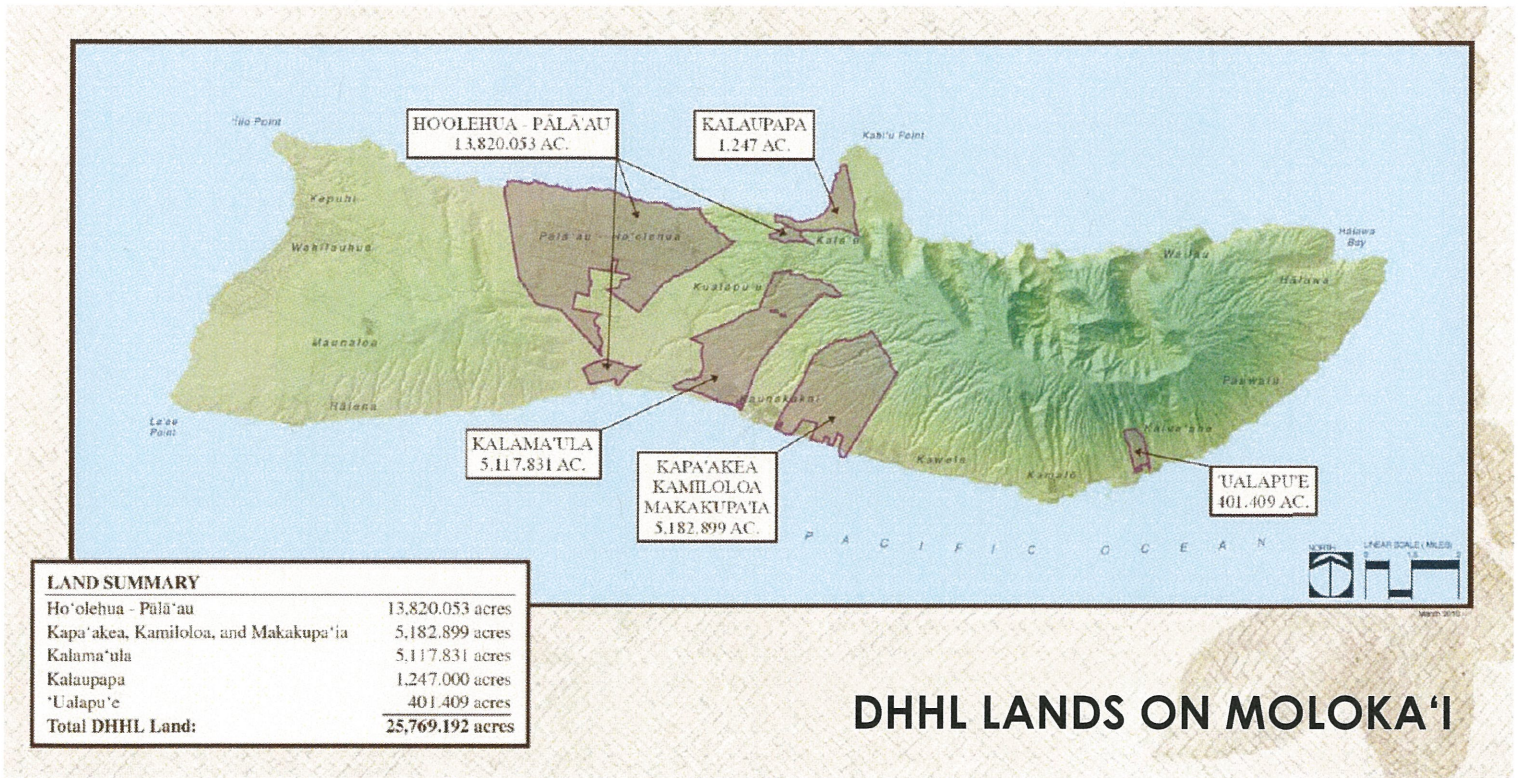
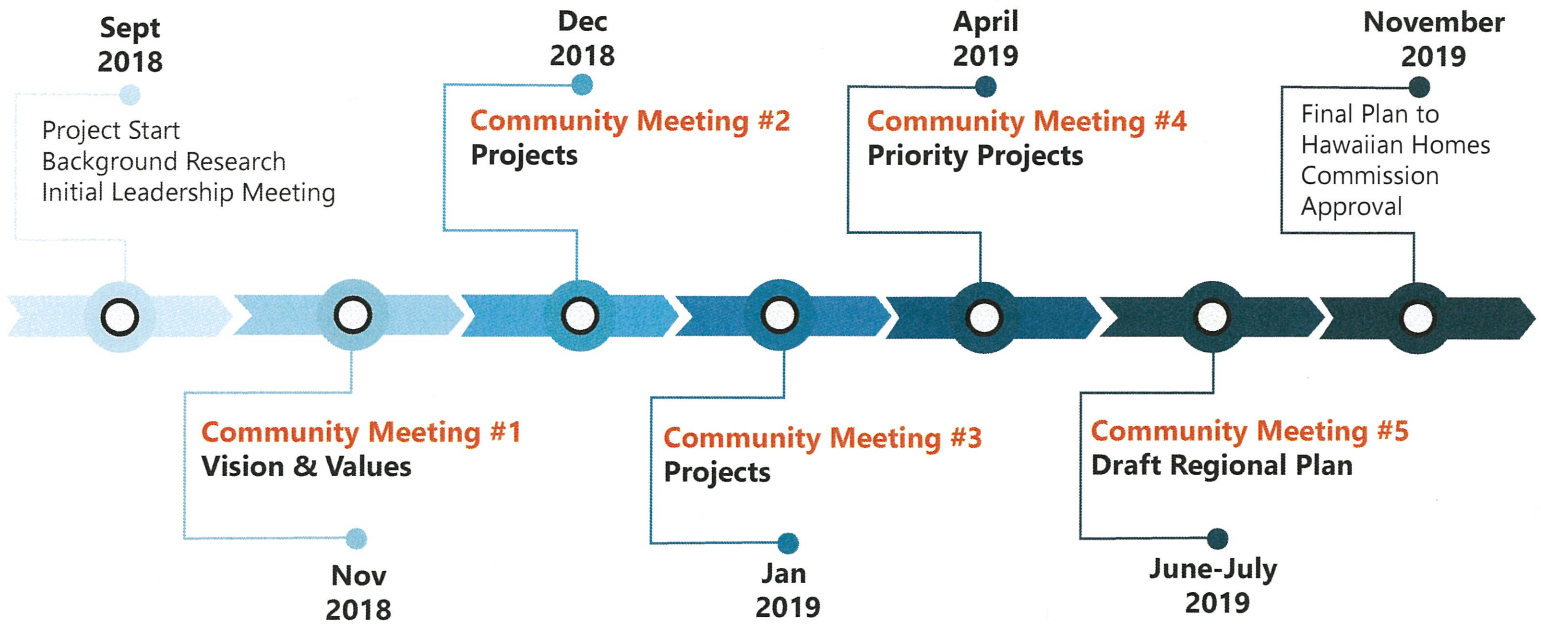
PURPOSE OF THE REGIONAL PLAN

- To directly involve the homestead community in planning for their region.
- To identify projects and priority projects that are important to the homestead community.
- To identify potential resources (such as partners and funding sources) for implementing priority projects.



The Vision and Values of the community serve as the foundation of the Regional Plan.

PROJECT TIMELINE



For more information, please contact:

Gigi Cairel
DHHL Planning Office
Phone: (808) 620-9480
E-mail: gigi.o.cairel@hawaii.gov

Gabrielle Sham
Townscape, Inc.
Phone: (808) 550-3894
E-mail: gabrielle@townscapeinc.com

March 27, 2019

For Reference Only

ALOHA!

In our work on the new 2019 Moloka'i Regional Plan, we sorted the earlier Project List to show what projects were completed or are in progress now. This document is a good reference because it gives you a comprehensive list of projects and work that affect Moloka'i homestead communities. The projects are listed as follows:

- I. Projects that are completed and accomplishments since the 2010 Regional Plan;
- II. DHHL Projects that are funded and are in progress now; and
- III. Community Projects that are funded and are in progress now.

I. COMPLETED PROJECTS SINCE THE 2010 MOLOKA'I REGIONAL PLAN

- In 2018, the Hawai'i State Supreme Court upheld the State Commission on Water Resources Management (CWRM) decision to dismiss the Kukui Moloka'i contested case hearing. This means that Moloka'i Ranch must file a new water use permit application, in-line with current law and standards. The court decision also allows for the opportunity for CWRM to consider the results of USGS water model when making water allocation decisions.
- Water pressure testing in upper Kalama'ula was completed. This information was utilized to design redundancy for upper Kalama'ula by looping the piping network. This effort will be part of a major improvements project to portions of DHHL's Public Water System No. 230.
- Beneficiary consultation on large-scale renewable energy development was conducted. The result was that the Hawaiian Homes Commission amended the DHHL Moloka'i Island Plan to designate lands at Anahaki-Mo'omomi as "Special District." DHHL has contracted a planning firm to work with the community/beneficiaries to develop a Special Area Management Plan for Anahaki-Mo'omomi.
- Beneficiary consultation for the land use designation for Mālama Park was completed. Mālama Park is now designated as "Special District." The next step is the development of a Special Area Management Plan for Mālama Park.
- DHHL continued the partnership with the University of Hawai'i College of Tropical Agriculture Human Resources (CTAHR) to provide for a full-time agriculture extension agent on Moloka'i to provide technical assistance and training for DHHL agriculture lessees.
- DHHL established a community-based Agricultural Advisory Committee, made up of beneficiaries, to advise the CTAHR extension agent on curriculum and other activities, and to receive reports from the agent.
- The septic tank modification at Kiowea Park was completed.
- DHHL was awarded \$20 million in federal funds for major improvements to the DHHL-owned Ho'olehua Public Water System No. 230.

MOLOKA'I HAWAIIAN HOME LANDS PROJECTS COMPLETED OR IN PROGRESS

March 27, 2019

- A new 20-year license was executed between DHHL and DLNR for Pālā'au Park.
- DHHL sponsored community leadership programs and a Water Law Training workshop.

Various grants were administered to Moloka'i beneficiary organizations. Projects ranged from community facility new construction and renovations; organizational capacity building; strategic planning; board training; kupuna financial management training; and agriculture peer-to-peer mentoring.

II. DHHL PROJECTS THAT ARE FUNDED AND IN PROGRESS

DHHL Project Title	Issue/Opportunity	DHHL Contact
1. Alternative energy initiatives	Develop photovoltaic system for the Kūlana 'Ōiwi office complex in Kaunakakai.	Land Management Division – Allen Yanos
2. Support the modification of lease/permit options available to native Hawaiians	Land dispositions currently available do not provide the flexibility some beneficiaries desire. Month-to-month revocable permits (RP) limit the capability of permit holders to acquire loans/grants. DHHL started to reform the RP. An informational briefing was presented to the Hawaiian Homes Commission in November 2018.	Land Management – Kahana Albinio
3. Support the creation of a new division to address energy issues within DHHL	Energy issues brought to the attention of the department often go unanswered due to the lack of a point of contact for energy.	Land Management Division – Allen Yanos
4. Assess and repair leaks in potable water delivery and storage system	The homestead communities on Moloka'i were the first to be established. As the infrastructure ages, repairs are necessary to ensure system integrity is maintained. DHHL obtained \$20 million in federal funds for major improvements to the DHHL-owned Ho'olehua Public Water System No. 230, including a photovoltaic system to reduce electricity costs to operate the water system.	Land Development Division – Jeffrey Fujimoto
5. Ho'olehua scattered agriculture lots	Plan and design to convert 5 agriculture lots into at least 20 lots.	Land Development Division – Mitchell Kawamura
6. Nā'iwa agriculture subdivision	Plan, design, survey and subdivide lots. Specific infrastructure improvements still to be determined.	Land Development Division – Mitchell Kawamura
7. Kapa'akea and Kamiloloa-One Ali'i flood mitigation	Prepare a shoreline erosion management plan for the Kapa'akea and Kamiloloa-One Ali'i areas.	Planning Office – Nancy McPherson

MOLOKA'I HAWAIIAN HOME LANDS PROJECTS COMPLETED OR IN PROGRESS**March 27, 2019**

8. Kapuāiwa Coconut Grove Cleanup	DHHL is conducting ongoing maintenance at Kapuāiwa grove. Moloka'i District Office has been collecting sprouting coconuts for regrowth projects and to clean the site.	Land Management – Shelly Carreira
9. 'Ohi'apilo Wetland and Bird Sanctuary Mitigation	The Management Plan for 'Ohi'apilo wetlands was completed. DHHL still needs to review the short- and long-term strategies and determine how best to proceed.	Land Management – Shelly Carreira
10. Mālama Park Special District	Now that Mālama Park is designated as a Special District, the next step is to develop a Special Area Management Plan for Mālama Park.	Planning Office contact to be determined
11. Anahaki-Mo'omomi Special District	Now that Anahaki-Mo'omomi is designated as a Special District, the next step is to develop a Special Area Management Plan	Planning Office contact to be determined
12. Master Plan Kalaupapa	DHHL submitted comments on the revised draft General Management Plan. Comment deadline was extended to March 7, 2019.	Planning Office – Nancy McPherson
13. Moloka'i Veterans and Homestead Center	This project is to design and construct a new facility near the Lanikeha Center in Ho'olehua.	Land Development Division – Jeffrey Fujimoto

III. HOMESTEAD COMMUNITY PROJECTS THAT ARE FUNDED AND IN PROGRESS

Homestead Community Project Title	Description	Project Lead
1. Support production of crops with local markets	Production of crops that can be utilized on-island can reduce over-head costs and improve profitability of farming. Development of an open market would provide a local venue for homesteaders to sell food products within the homestead community. Local market is currently being implemented at Lanikeha Center	Moloka'i Homestead Farmers Alliance
2. Multi-pronged agriculture training program	Ahupua'a o Moloka'i is assisting homesteaders to: get certifications in farming, food production, food safety and marketing so they can mentor other farmers; start a seed saving training program; provide training in raising potted plants; and advise farmers ready to move from subsistence gardens to production farming.	Ahupua'a o Moloka'i

MOLOKA'I HAWAIIAN HOME LANDS PROJECTS COMPLETED OR IN PROGRESS

March 27, 2019

3. Natural Farming Systems	Makakuoha Cooperative is conducting natural farming systems training and demonstration projects on agricultural homestead lots in Ho'olehua and Kalama'ula.	Makakuoha Cooperative
4. Training to develop ag lots into commercial farm businesses	Sons of Ho'olehua Cooperative is currently conducting this training.	Sons of Ho'olehua Cooperative
5. Alternative energy initiatives	A photovoltaic system for the Lanikeha Center is currently planned, with construction expected to be completed in 2019.	Moloka'i Homestead Farmers Alliance
6. Lanikeha Center improvements	Comprehensive improvements almost complete at the Lanikeha Center, including roof repair, new flooring, and kitchen equipment,	Moloka'i Homestead Farmers Alliance
7. Improvements to Kiowea Park	A new facility is under construction at Kiowea Park, including banquet hall and kitchen.	Kalama'ula Homesteaders Association

2019 Moloka'i Regional Plan
POTENTIAL MOLOKA'I REGIONAL PLAN PROJECTS

March 27, 2019

ALOHA!

We have had 3 Regional Plan meetings since November 2018 to prepare the new 2019 Moloka'i Regional Plan and are at the critical point in the process where homesteaders will identify their top priorities. **Please come to the next meeting on April 11, 2019 at the Kūlana 'Ōiwi Hālau from 5:00 p.m. to 8:00 p.m.** to ensure that the priorities truly represent the needs, opportunities and interests of the homestead lessees. Everyone who attends the meeting will vote on the projects listed below, to identify the 2019 Regional Plan Priority Projects.

Where did the list of potential projects come from?

The potential projects came from three (3) sources:

1. The 2010 Moloka'i Regional Plan which listed potential projects that were discussed at that time;
2. Projects identified by Moloka'i homesteader leaders who attended a statewide Puwahu Conference of homestead leaders held in August 2018; and
3. Discussions and ideas generated in the three (3) Moloka'i Regional Plan meetings which were held on November 1, December 5 and January 30.

Why do some of the Project Titles look different from previous listings?

At one point in the process, we had a list of over 80 potential projects! It included projects that were completed and projects that were funded that were already in progress. Coming from different sources, there were projects that were similar to each other or that represented different parts of the same project. To make it easier, DHHL staff took out all the completed projects and the projects that were already occurring –they are included in a separate list in this mailout. For the remaining projects, staff edited the titles so they would all be at the same level. Necessary details were preserved in the project descriptions. If there are glaring problems with the project titles, please see Gigi or Julie before the meeting starts so we can note your concerns.

How should I prepare for the April 11 meeting?

Read through the projects and circle the top 5 projects that you support. You will have the opportunity to cast 5 votes at the April 11 meeting and we will have a final list of the priorities.

What is a PRIORITY project? What happens to projects not selected as priority?

All projects on this Potential Projects List are important and will be included in the final 2019 Moloka'i Regional Plan. Any project can be championed by any member of the community at any time. A "PRIORITY PROJECT" is selected by the community during the planning process to be made a priority by both the community and DHHL. Time and resources will be focused on the completion of the priority projects. The priority projects are recognized as clearly striving towards achieving the Visions within the Moloka'i region.

2019 Moloka'i Regional Plan
POTENTIAL MOLOKA'I REGIONAL PLAN PROJECTS
 March 27, 2019

Please review this list for the April 11 meeting.

Project Title	Project Lead	Description
1. Ualapu'e Kuleana Homestead Development and Cultural Resource Management Plan		Develop a Cultural Resource Management Plan and a Kuleana Settlement Plan for the Ualapu'e lands. Use the Kuleana Homestead Program to expedite award of 175 homestead leases and promote settlement on the 376-acre parcel at Ualapu'e. Work with the Mana'e community and the Ma'ana nonprofit organization to identify cultural resources and develop a cultural resource management plan.
2. Tiny Homes	Ahupua'a o Moloka'i	Develop a pilot demonstration project that features "tiny homes" as an alternate housing option.
3. Community Hālau		The cost for lodging on Moloka'i can be expensive. The development of community hālau(s) can provide lodging.
4. Recreational Facilities at Lanikeha Center		There is a need for recreational facilities at Lanikeha to service the existing community and the 80+ families that will reside in the new residential lots.
5. Kalama'ula Mauka Passive Park	Kalama'ula Mauka Homestead Association	The long-term vision for the park includes a wide range of amenities designed to encourage people to be active, engage in community gatherings and learn ways to incorporate healthy choices and fitness into everyday life.
6. Emergency Shelter for Kapa'akea	Kapa'akea Homestead Association	Kapa'akea is an area that is prone to flooding. An Emergency Shelter should be developed for families at Kapa'akea.
7. Ho'olehua Hale Improvements	Ahupua'a o Moloka'i	Renovate the Hale currently being used by the Ahupua'a o Moloka'i.
8. Self-Governance Task Force		Establish a community-based self-governance task force that promotes the intent of the original HHCA.
9. Kanakaloloa Cemetery Improvements		Kanakaloloa Cemetery needs repairs and improvements.
10. Moloka'i Irrigation System (MIS) Assessment		The MIS is an aging system that many people depend on. Instead of dealing with problems as they arise, an assessment of all deficiencies should be developed so that repairs can be made before they become larger problems. The assessment should also identify the number of lessees that can be moved to the MIS to reduce pressure on ground water resources.
11. Non-potable Water Sources for Agriculture and Other Uses		Explore potential use of non-potable water sources, such as: water from the regular flushing of fire hydrants, reclaimed water and recycled wastewater.

2019 Moloka'i Regional Plan
POTENTIAL MOLOKA'I REGIONAL PLAN PROJECTS
 March 27, 2019

Project Title	Project Lead	Description
12. Supplies and Materials for Cross-Fencing and Deer Fencing	Moloka'i Homestead Livestock Association	Design and construct fencing for the area under license by the Moloka'i Homestead Livestock Association
13. Deer Management Plan	Ahupua'a o Moloka'i and Moloka'i Homestead Livestock Association	Develop a Deer Management Plan to control the deer population on Hawaiian Home Lands. The Plan should identify data on the deer population that are on Hawaiian Home Lands and assess the feasibility of different management alternatives. Management strategies should identify what homesteaders can do to help control the deer population.
14. Protection of our Natural Environment from Invasive Species		DHHL should advocate to protect beneficiaries and DHHL lands from invasive species. For example, we are concerned about Big Island bees keepers moving to Moloka'i.
15. Green Trades Training Program		Green Trades support sustainability, renewable energy, and environmental industries. The development of an on-island training program in green-trades would address one facet of sustainability.
16. Land for Homesteaders to Pursue Light Industrial Activities		Unencumbered lands suitable for industrial uses in Ho'olehua should be identified and the Island Plan amended to accommodate proposed industrial uses by homesteaders. An alternative would be to pursue a land transfer with DLNR for lands near the airport where industrial uses would be more appropriate.
17. Road Improvement		Installation of fiber optic cables by Sandwich Isle Communications (SIC) has left the road bumpy. The community would like the road to be repaired to previous conditions at SIC's expense.
18. Water Rate Assessment and Legal Analysis of Beneficiary Rights Regarding Water Rate Disparities.		Homestead lots that are connected to the County water system pay higher water rates than the homestead lots connected to DHHL's water system. A Water Rate Assessment of all Moloka'i lessees would document differences in water rates. The Assessment would include a legal analysis of beneficiary rights regarding water rate disparities.
19. Action Plan to Convert Cesspools to Septic Tanks.		State Department of Health Administrative Rules require all cesspools in Hawai'i to be converted to septic tanks by the year 2050. DHHL and beneficiaries should work together to develop a plan and raise funds for this undertaking

2019 Moloka'i Regional Plan
POTENTIAL MOLOKA'I REGIONAL PLAN PROJECTS
 March 27, 2019

Project Title	Project Lead	Description
20. Resources to Renovate Kūpuna Homes in the Flood Zone	Kapa'akea Homestead Association	Identify and secure resources to renovate kupuna homes that are located in the flood zone.
21. Community Garden Plots		Develop community garden plots in residential homesteads in order encourage lessees to grow food for their families.
22. Soil Testing for Contaminants		Assist homesteaders to obtain free assistance from UH CTAHR or DOA for soil testing on former pineapple production lands
23. Shared Farm Equipment for Agricultural Lessees		Explore options for the shared use of farm equipment among agricultural lessees.
24. Kalama'ula Shoreline Erosion Management Plan	Kalama'ula Homesteaders Association	Prepare a Shoreline Erosion Management Plan for the Kalama'ula area, similar to the plan being developed for Kapa'akea and Kamiloloa-One Ali'i.
25. Coordinated and Comprehensive Hawaiian Trust Services		Bring all the Hawaiian trust agencies back to Moloka'i to work together to improve services to Native Hawaiians. Encourage Ali'i trusts to become partners.
26. Moloka'i as its Own County		Conduct a feasibility study to explore the pros and cons, and legal means for Moloka'i to be its own county.
27. Climate Change		Assemble a committee or hold 'talk-story' sessions to determine what Moloka'i should do to prepare for and address climate change.