

DAVID Y. IGE  
GOVERNOR  
STATE OF HAWAII

DOUGLAS S. CHIN  
LT. GOVERNOR  
STATE OF HAWAII



JOBIE M. K. MASAGATANI  
CHAIRMAN  
HAWAIIAN HOMES COMMISSION

WILLIAM J. AILA, JR.  
DEPUTY TO THE CHAIRMAN

**STATE OF HAWAII  
DEPARTMENT OF HAWAIIAN HOME LANDS**

P. O. BOX 1879  
HONOLULU, HAWAII 96805

November 19, 2018

Aloha mai kākou,

We had a great turnout at the first Moloka'i Regional Plan meeting on November 1. Mahalo to those who participated and shared your mana'o. For those who may be new to the regional plan process, included with this letter are a fact sheet and roadmap. This is a reminder for the next community meeting. Please come join us in this important process to help make your community visions a reality.

**Moloka'i Regional Plan Update – Community meeting #2  
Wednesday, December 5, 2018  
6:00 PM - 8:00 PM  
Kūlana Oihi Hālau - Kaunakakai**

The regional plan is a community-driven Plan. It is intended to help you to put down on paper the projects and tasks that will help the community achieve its long-term vision.

We gathered a lot of information already from the community. We are still compiling the notes and will have them available at the December 5 meeting. Many of you asked about the status of the community priority projects in the previous Regional Plan. I am pleased to report that three out of the five priority projects are completed. One project – Alternative Energy Initiative – is ready for construction. And, the last project – Moloka'i Sustainable Farming Project – is on hold. See Attachment 2 for detail information.

In regards to the issues and concerns identified in the previous 2010 Regional Plan, we will review those together as well as any new items that we heard from you. At this next meeting, let's work on those issues and concerns and brainstorm a list of projects on how to address them.

We look forward to seeing you at the next meeting on December 5 and to work in a collaborative spirit to make this regional plan your own. Your participation will make a difference. If you have any questions, please contact Ms. Gigi Cairel in the Planning Office at (808) 620-9461 or by email at [Gigi.O.Cairel@hawaii.gov](mailto:Gigi.O.Cairel@hawaii.gov).

Aloha and mahalo,

Jobie M.K. Masagatani  
Chair, Hawaiian Homes Commission

Enclosures



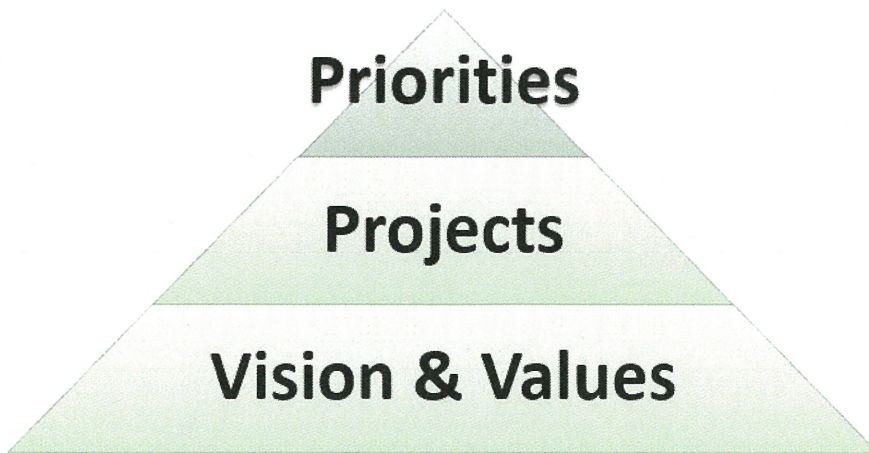
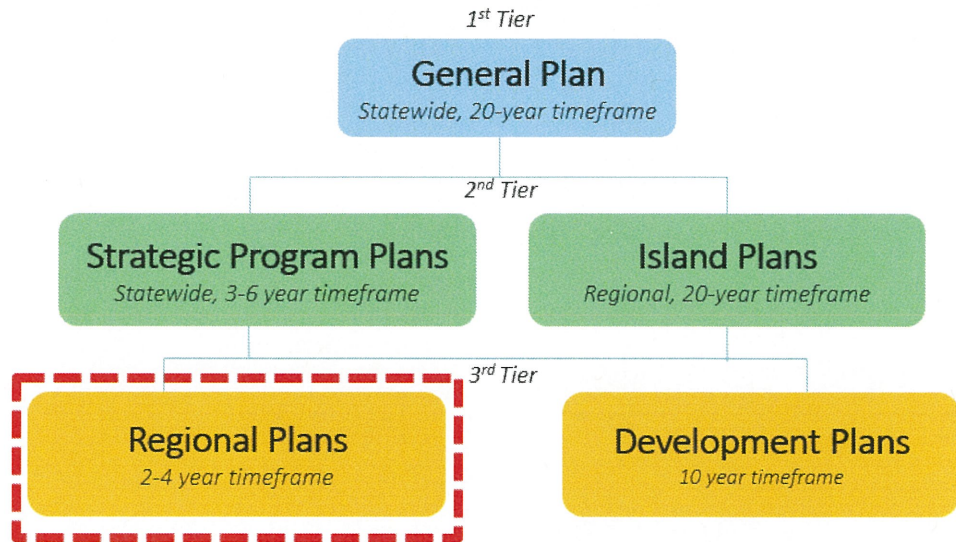
HAWAIIAN HOME LANDS TRUST  
DEPARTMENT OF HAWAIIAN HOME LANDS

# REGIONAL PLAN UPDATE Island of Molokaʻi

The Molokaʻi Regional Plan is one of twenty-two regional plans the Department of Hawaiian Home Lands (DHHL) has developed state-wide. DHHL regional plans function as a means to develop partnerships, pursue resources (including funding), and coordinate action in each community. Regional plans also identify key priority projects that are defined and implemented by the community and are essential in moving community improvement projects forward.

The existing Molokaʻi Regional Plan was completed in 2010 and is being updated to reflect the needs, vision, and values important to the Molokaʻi homestead communities.

## DHHL'S PLANNING SYSTEM

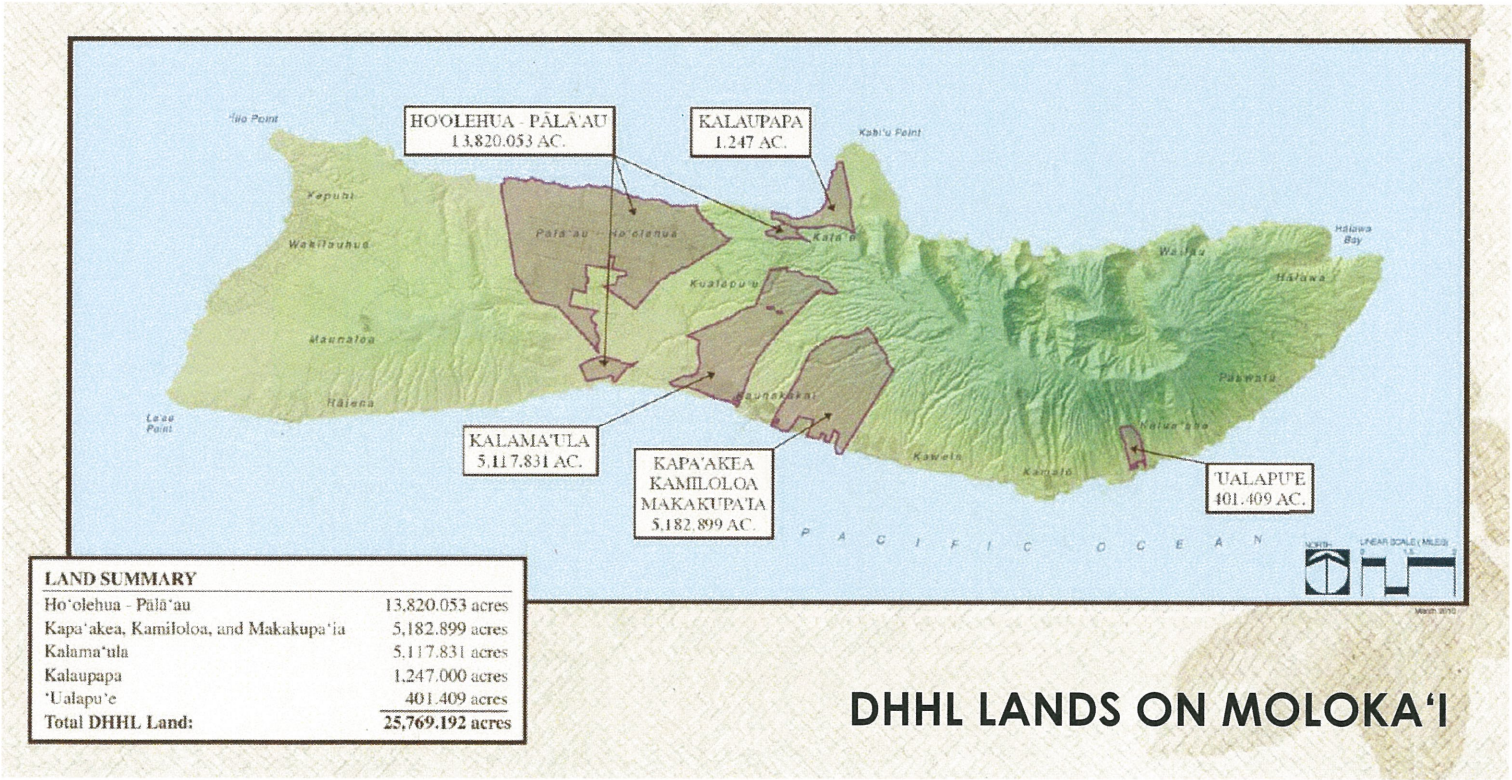


*The Vision and Values of the community serve as the foundation of the Regional Plan.*

## PURPOSE OF THE REGIONAL PLAN

- To directly involve the homestead community in planning for their region.
- To identify projects and priority projects that are important to the homestead community.
- To identify potential resources (such as partners and funding sources) for implementing priority projects.





**For more information, please contact:**

# Gigi Cairel

*DHHL Planning Office*

Phone: (808) 620-9480

E-mail: [gigi.o.cairel@hawaii.gov](mailto:gigi.o.cairel@hawaii.gov)

## Gabrielle Sham

*Townscape, Inc.*

Phone: (808) 550-3894

E-mail: [gabrielle@townscapeinc.com](mailto:gabrielle@townscapeinc.com)

# ATTACHMENT 2

Summary Status  
Community Priority Projects  
2010 Moloka‘i Regional Plan

2010 Regional Plan Priority Project	Status
Alternative Energy Initiative	Construction estimated to start in 2019. DHHL received federal funds to add a photovoltaic system to the DHHL potable water system to help reduce energy costs to run the DHHL-owned Ho‘olehua potable water system. Cost savings are to be passed on to beneficiaries.
Conduct Beneficiary Consultation on Large Scale Renewable Energy Development	Completed. DHHL conducted the beneficiary consultation and an informational meeting on Moloka‘i on July 11, 2010. Results were approval by the Hawaiian Homes Commission to amend the DHHL land use designations for the lands at Mo‘omomi-Anahaki to what is called “Special District.”
Water pressure testing in Kalamaula – Kalama‘ula Homesteaders Association	Completed. Information from the water pressure testing was incorporated in the design of a much larger project, improvements to the DHHL-owned Ho‘olehua potable water system. DHHL received federal funds to improve the entire potable water system, including addressing water pressure issues at Kalama‘ula. Construction estimated to start in 2019.
Modify Septic Tank at Kiowea Park	Completed.
Support Moloka‘i Sustainable Farming Project – Ho‘olehua Homestead Association	On hold.