



Department of Hawaiian Home Lands

**Beneficiary Consultation
ON
EMI's Water Lease and
DHHL's Water Reservation**

January 14, 2019
Paukūkalo Community Center
6:00 – 8:00 pm

Agenda

- A. Introduction and Purpose
- B. Presentations
 - 1. EMI: Proposed Water Lease
 - 2. DLNR: Water Leasing Process
 - 3. DHHL: Water Needs & Reservation Request
- C. Discussion
- D. Next Steps and Closing

Purpose of Consultation

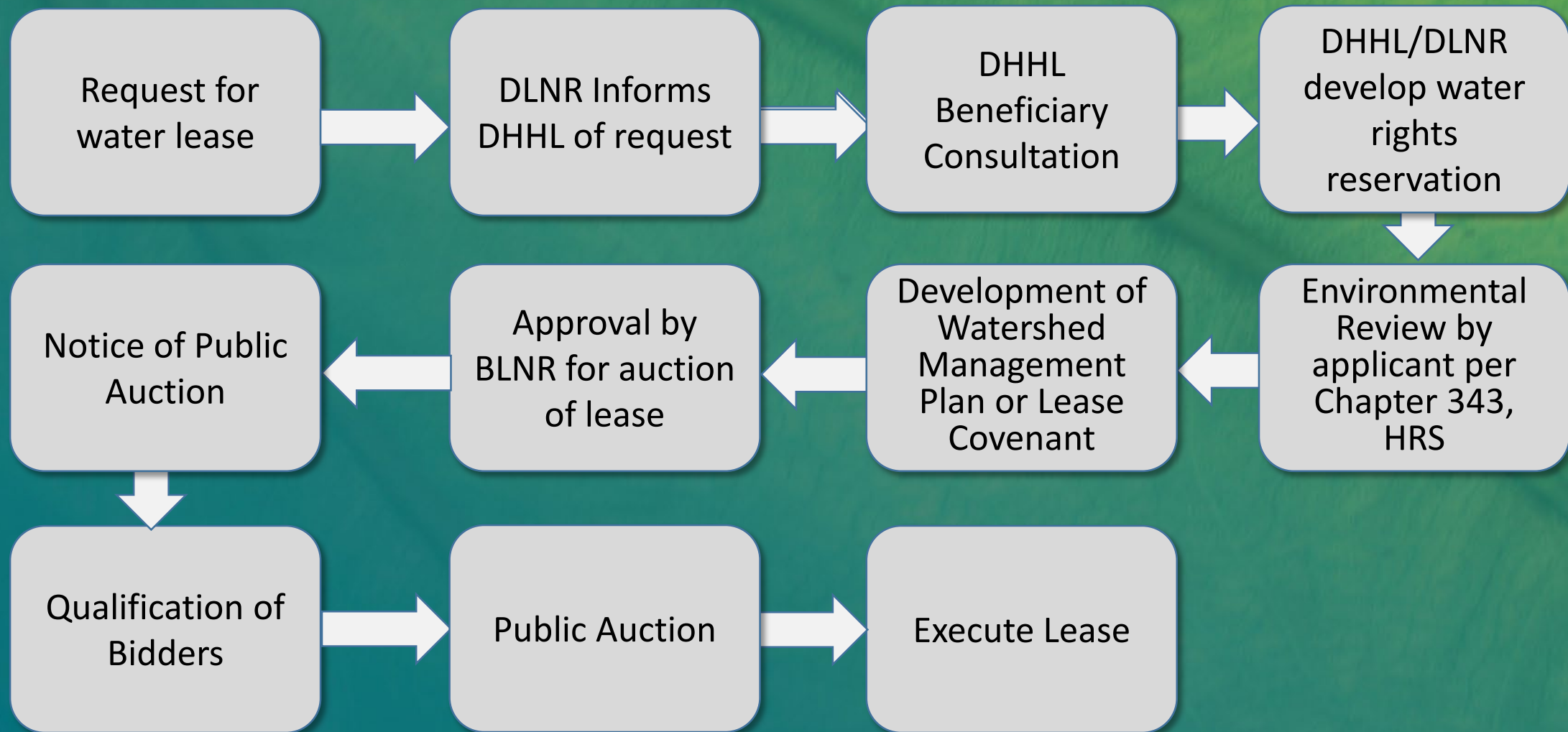
- 1. Share Information on EMI's Request for a Water Lease**
- 2. Explain BLNR's Water Leasing Process**
- 3. Discuss DHHL's Water Needs in the Same Area:**
 - How are Water Needs Identified
 - Water Already Reserved
 - Discussion on Other Water Needs to make a Water Reservation as part of the State's Water Leasing Process

EMI's Proposed Water Lease

Project Details and Timelines

DLNR's Water Leasing Process

Chapter 171-58, HRS



DHHL's Interests In EMI Water Lease

1. Secure Water for Affected Lands

- Ke'anae fed by Pi'ina'au and Pālahuhulu
- Wailuanui fed by Wailuanui and Waiokamilo
- Kēōkea and Waiohuli--EMI is key source
- Pūlehunui--irrigated by EMI and brackish wells

2. Water License Revenue (30%)

- State Constitution, Article XII, Section 1
- 30% to the Native Hawaiian Rehabilitation Fund

How Does DHHL Identify Water Needs?

A. Guidance from DHHL's Planning System

- General Plan
- Water Policy Plan
- Maui Island Plan
- Regional Plans
- Development Plans

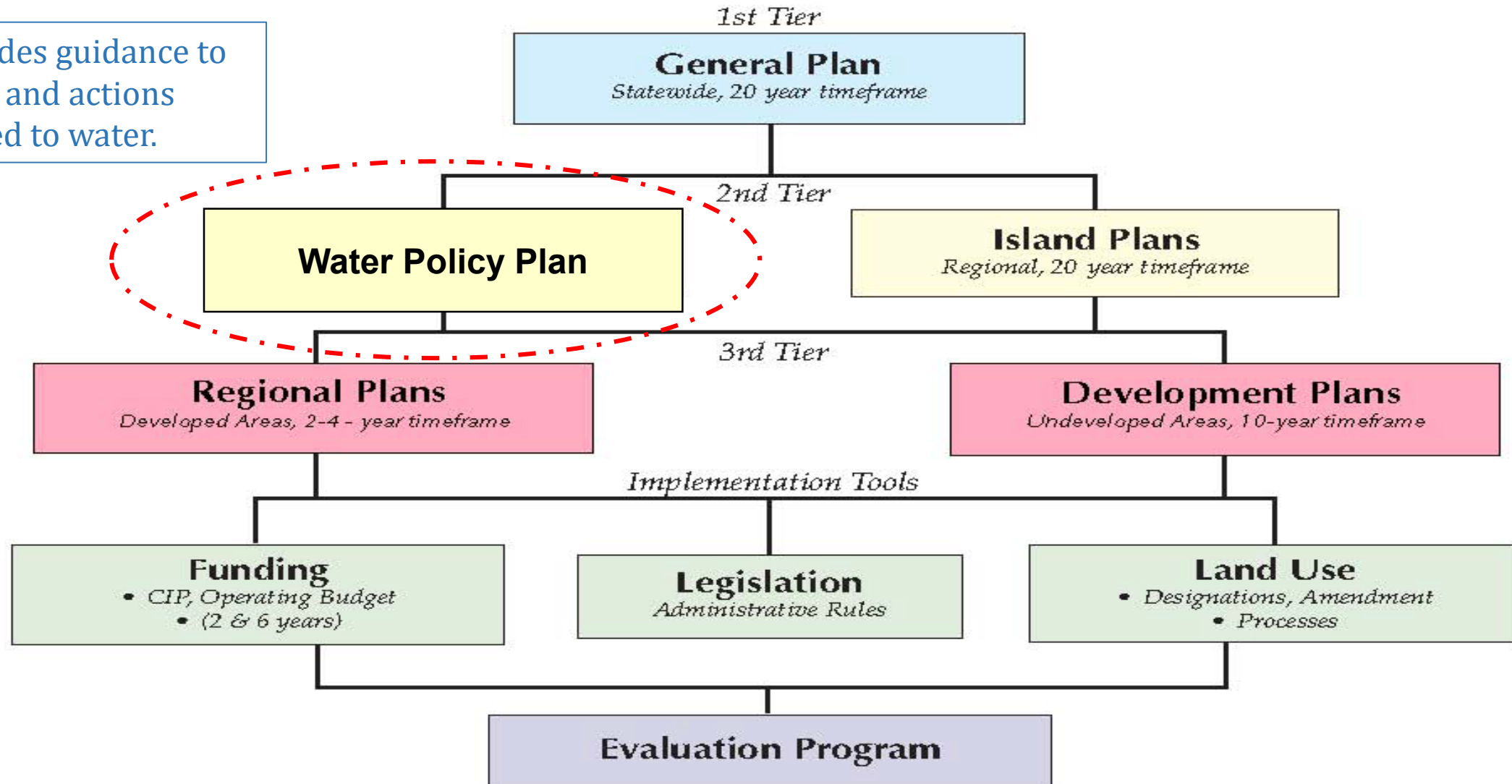
B. Guidance from DLNR/CWRM

- State Water Projects Plan
- CWRM Groundwater Reservations

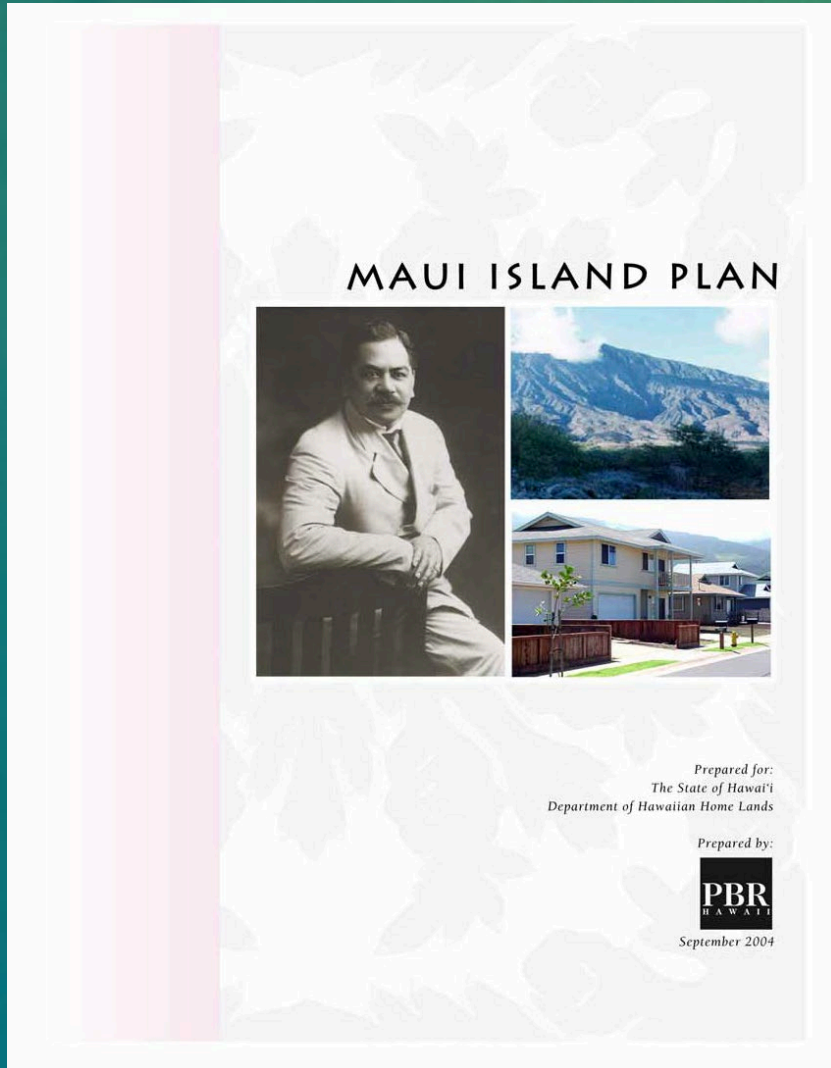
DHHL Planning System

*Hawai'i Administrative Rules
§10-4-51 to §10-4-60

Provides guidance to
plans and actions
related to water.

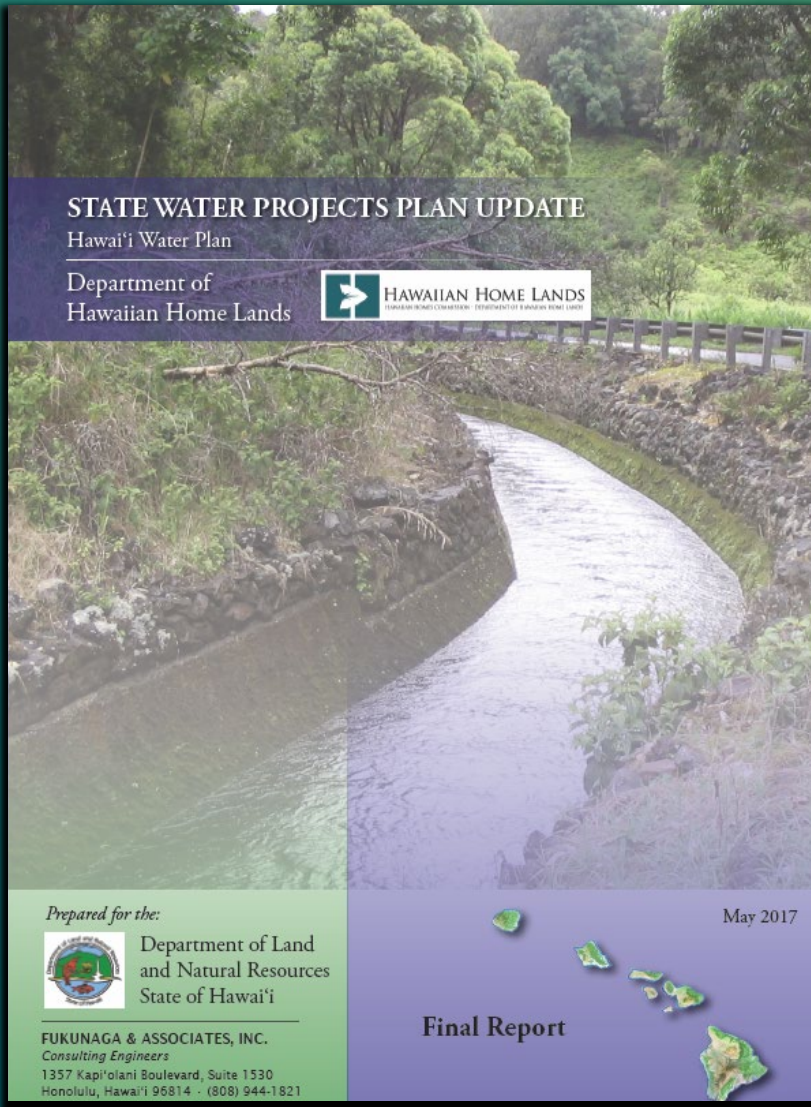


Maui Island Plan (2005)



- 20 year time frame
- Identifies Land Use Designations for 31,000 acres on Maui
- Different land uses (e.g. subsistence agriculture, residential) have different water demands

State Water Projects Plan (SWPP)



- Approved by Commission on Water Resource Management – May 2017
- Identifies DHHL Water Needs Over Next 20 Years
- Calculates Water Demand Based on DHHL Plans
- Notes Where Future Numbers Will be Refined

Existing CWRM Reservations

- In September 2018 – CWRM reserved potable groundwater for DHHL lands based on the State Water Projects Plan.
- Potable Water Reserved in Areas Related to EMI:
 - 1,734,000 gpd for Pūlehunui
 - 813,000 gpd for Kēōkea-Waiohuli
 - 3,000 gpd for Ke‘anae-Wailuanui
- Tonight, we’re asking if DHHL’s Reservation Request here should only include non-potable water uses? Are there other water needs that DHHL should include?

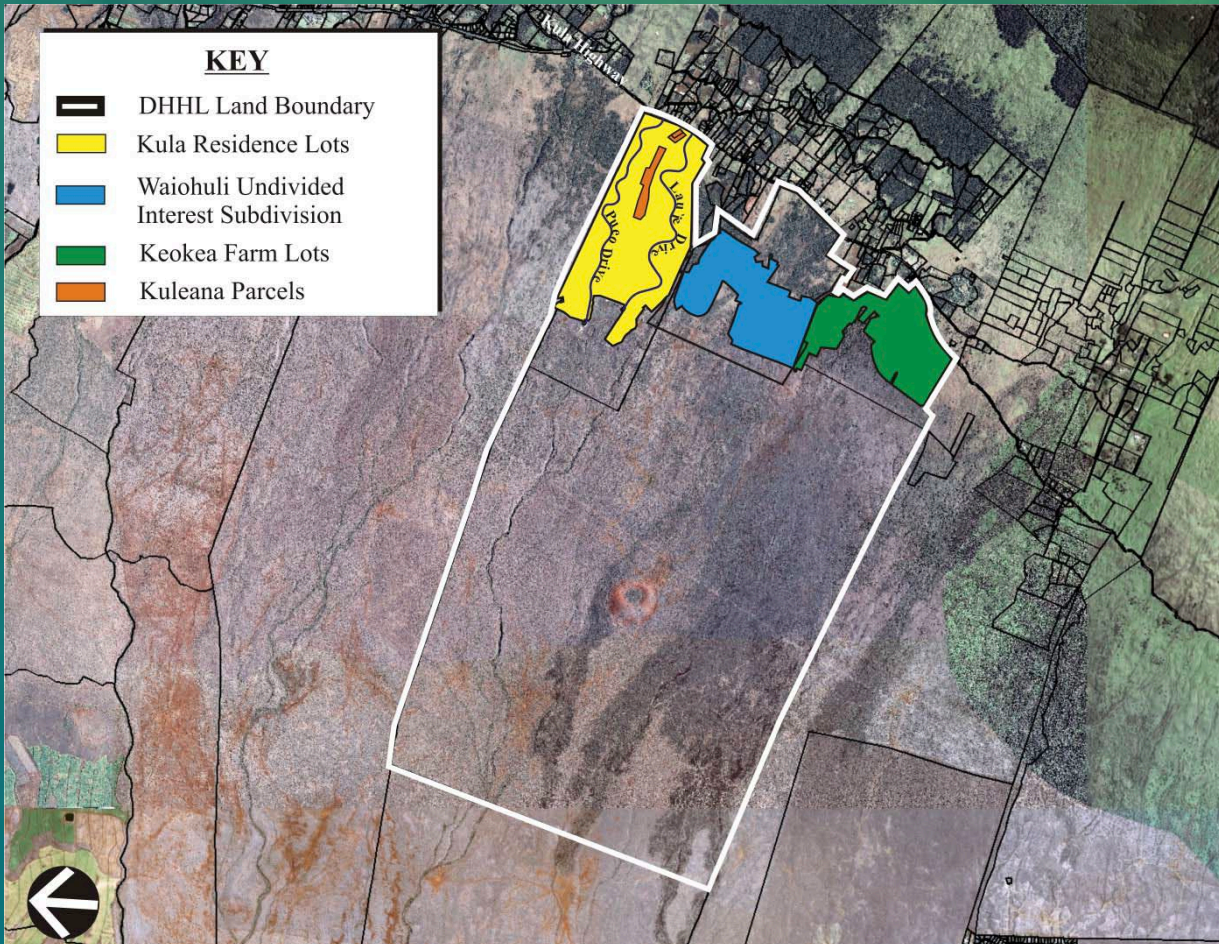
Ke'anae-Wailuanui



	Potable	Non-Potable	Total
Ke'anae	3,400	4,587,800	4,591,200
Wailuanui	6,600	2,280,200	2,286,800
Already Reserved	3,000		3,000
Potential Reservations	7,000	6,868,000	6,875,000

- Ke'anae is fed by Pi'ina'au and Pālahulu Streams; Wailuanui is fed by Wailuanui and Waiokamilo Streams. These streams were fully restored so no need to reserve non-potable water.
- Add Wailuanui potable (11 lots @ 600 gpd=6,600 gpd)
- Potential Reservations: 6,875,000 gpd

Kēōkea-Waiohuli



Priority Project - Develop Water Source and Related Infrastructure for Agricultural and Residential Lots

Kēōkea-Waiohuli	Potable	Non-Potable
From SWPP	809,700	578,000
Already Reserved	813,000	
3,940 acs. Gen. Ag @2500		9,850,000
Adjusted Totals	-3,300	10,428,000

- No non-potable allocations for:
 - Existing Ag lots (425,000 gpd)
 - Gen. Ag of 3,940 acs. below homes (9,850,000 gpd)
- Potential Reservations: 10,428,000 gpd

Pūlehunui

PŪLEHUNUI REGIONAL INFRASTRUCTURE MASTER PLAN

DRAFT ENVIRONMENTAL IMPACT STATEMENT

VOLUME I OUT OF II

Pūlehunui Ahupua'a, Kula Moku, Maui

PROPOSING AGENCY:



Department of Hawaiian Home Lands

PREPARED FOR:

Department of Hawaiian Home Lands
Department of Land and Natural Resources
Department of Accounting and General Services
Department of Public Safety

ACCEPTING AUTHORITY:

Governor, State of Hawai'i

PREPARED BY:



Prepared pursuant to Chapter 343, Hawai'i Revised Statutes,
and Chapter 11-200, Hawai'i Administrative Rules

NOVEMBER 2018

	Potable	Non-Potable
Pūlehunui	1,734,000	1,027,510
Already Reserved	1,734,000	
Adjusted Total	0	1,027,510

- Pūlehunui Regional Infrastructure Master Plan, Draft EIS submitted
- Includes Other Agencies
- New Community Visions
- Groundwater is brackish
- Potential Reservations: 1,027,510 gpd

New Reservations from EMI System

- Potential New Reservations From EMI System
- Non-Potable Unreserved Needs
- Total: 11,455,510 gpd

Discussion Questions

- Should DHHL's Reservation Request Here Include Only Non-Potable Uses?
- Where Should This Water Come From to Meet Those Water Needs?
- Are There Any Water Needs that DHHL Did Not Account For? What Are They?

Discussion Kuleana

- Be creative!
- Work toward future solutions/aspirations
- Disagreement is OK as long as we are respectful of each other
- Everyone gets a turn first, then repeats
- Cell phones off or on silent
- Take all calls/texting outside

Discussion Kuleana

Help to promote good discussion by:

- Making sure everyone has an equal opportunity to express their ideas;
- Actively listening;
- Keeping an open mind and maintaining a positive attitude;
- Keeping side conversations to a minimum.

Discussion Questions

- Should DHHL's Reservation Request Include Only Non-Potable Uses?
- Where Should This Water Come From to Meet Those Water Needs?
- Are There Any Water Needs that DHHL Did Not Account For? What Are They?

Next Steps and Closing

- Comment Deadline: February 14, 2019
- Beneficiary Consultation Report & Recommendations will be presented to the Hawaiian Homes Commission at its Meeting in March
- DHHL Will Submit a Water Reservation Request to the Commission on Water Resource Management (CWRM)
- CWRM Action Will be Required on DHHL Water Reservation
- DLNR and EMI Will Continue with Water Lease Process

Contacts

- DHHL Planning: dhhl.planning@hawaii.gov
- Kaleo Manuel
Acting Planning Program Manager
DHHL Planning Office
kaleo.l.manuel@hawaii.gov
- Halealoha Ayau
Water Resource Management Specialist
DHHL Planning Office
e.halealoha.ayau@hawaii.gov