



# Hoa ‘Āina Partnership Agreement

A Collaborative Project Between  
University of Hawaii-Hilo / Sea Grant Program and DHHL  
December 17-18, 2018 HHC Meeting



# Background & Context

- More requests by DHHL beneficiaries to actively create mālama ‘āina initiatives and “steward” DHHL lands;
- DHHL needs a process/mechanism to respond to these requests;
- May 2016 HHC meeting presentation on work between the Kailapa Community Association and UH-Hilo Sea Grant Program;
  - A desire to create and support a community of abundance and prosperity where we understand and embrace the connectivity, relationships, and dependency we have with our lands, oceans, and each other. A resilient community engaged and empowered to address the productivity of our community on all levels (physical, mental, emotional, spiritual) shifting our behaviors to be ever present, conscious, and responsive to the needs of our diverse and unique South Kohala landscapes. We envision a community moving past a want to survive to a *place where we THRIVE*.
- DHHL and UH-Hilo Sea Grant Program entered into a 1-year MOA that began on May 1, 2017.



# Process for Developing Agreement

- Small one-on-one meetings and focus group meetings with natural resource managers and other professionals engaged in community-based land management programs within Hawaiian communities;
- Small DHHL beneficiary meetings with community leaders and residence to set foundations and understanding of what they believe to be ‘Āina Momona (Productive, thriving, healthy communities)
  - “If you are successful in all your endeavors, what does your world now look like?”
- Previous DHHL work regarding Non-Homestead Land Use Requests from Nonprofit Organizations (April 2016);



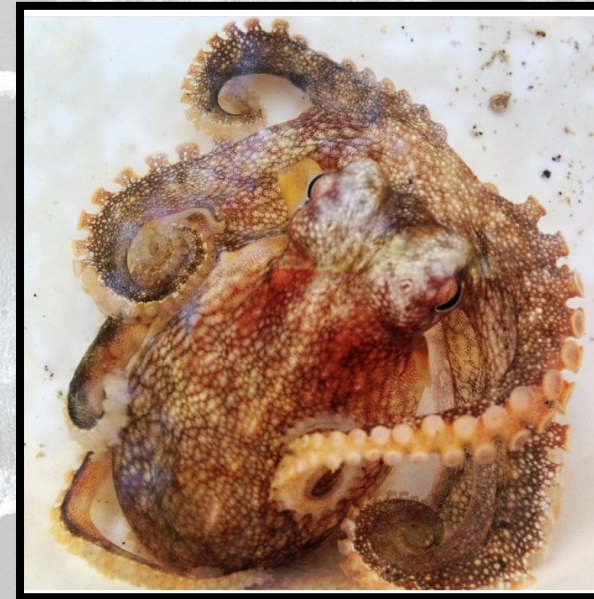


# Five Values Identified

1. Honoring Place and our kini akua (natural resources)
2. Honoring Heritage
3. Supporting the WE and not the I (kokua aku – kokua mai)
4. Strengthening relationships between multiple generations
5. Grow knowledge and care for the keepers of knowledge



# Honoring Place and Our Kini Akua (natural resources)





# Honoring Heritage





# Supporting the WE and not the I (kokua aku – kokua mai)





# Strengthening Relationships Between Multiple Generations





# Grow Knowledge and Care for the Keepers of Knowledge





# Piko-out Model

Three (3) layers of responsibility

1. The piko, or center, are the people who show up, contribute, put in the time, and are depended on to make things happen. This inner layer represents the people that should have a say because they have earned the responsibilities to contribute their needs and wants. This is the “who I am most responsible to” layer.
1. The second layer are made up of the geographic community and who are affected in some way by the “activity” or project, but do not actively contribute and put in time. This layer has influence on decisions being made and can sway the direction of these decisions, but do not show up and have not earned the responsibilities to contribute their needs and wants AND be listened to.
1. The outer layer are the partners and “non” geographic residence who support the project and/or activity but are not living in the area and not within the piko, not the ones dependent on success. They do have influence in advising and/or contributing to discussions and initiatives but usually play a more silent-supportive role to the Piko.

Kahua Kōko’o (Supportive Foundation)  
(partnerships, non-geographic residence, the touch-n-goes)

Kaiaulu (the geographic community)  
(those who share space with but not necessarily active within)

Piko (the center)  
(those present and contributing)



# The Hoa 'Āina Partnership Agreement Application

DRAFT Document DHHH, Hoa Aina Partnership Proposal  
February 2018 Pelika Andrade

## HOA AINA PARTNERSHIP Proposal

The HOA AINA Partnership is meant to support partnerships between The Department of Hawaiian Homes Land and community organizations (with a preference to DHHH community organizations) to collaborate on Malama Aina Initiatives on DHHH lands designated by a DHHH Island Plan for either Community Use, Conservation, Special District, or General Agriculture. The HOA AINA Partnership is meant to provide a mechanism for both DHHH and community organizations to share the responsibilities in creating spaces within Aina Hoopulapula (our rehabilitation lands) to support the active "rehabilitation" of our people towards a destination of Aina Momona: Thriving and Productive Communities. The HOA AINA Partnership should address other dimensions of our cultural health (emotional, mental, physical, spiritual) and provide spaces where services that support the fundamental values and relationships of Native Hawaiians can be offered.

The HOA AINA Partnership is meant to support projects that contribute to Aina Momona (Thriving and Productive Communities) with activities and focus areas related to the following focus areas.

### Five Focus areas of the HOA AINA Partnership

1. **Honoring place and our kini akua (natural resources).** How is the proposed project supporting native landscape and watershed (ahupua'a) health and productivity?
2. **Honoring heritage.** Perpetuating traditional practices and activities, relationships, spirituality and values within the project activities and land base.
3. **Supporting the WE and not the I (kokua aku – kokua mai).** Projects that actively encourage and nurture collective engagement and collective consciousness. Projects that include service and conscious reciprocal contributions to and with family, community, and kini akua (natural resources).
4. **Strengthening relationships between multiple generations.** Providing spaces where multiple generations (keiki to kupuna) are supported in strengthening relationships to each other, to the land base, and to the cultural values that are fundamental to thriving and productive communities.
5. **Grow knowledge and care for the keepers of knowledge.** Providing a space to nurture and grow knowledge as well as care for the keepers of knowledge. Projects are encouraged to showcase knowledge application and relevance especially in planning and problem solving for future generations.

## PROPOSAL FORMAT

### Organizational Narrative

- Organization Background
  - o Name of Organization
  - o Contact information
    - Address
    - Phone
    - Fax
    - Email
    - Website (social media, etc)
  - o Contact Person, Title, Phone, Email
  - o State of Hawaii General Excise Tax Number (GET)
  - o Federal Employer Identification Number (FEIN)
  - o Organization information
    - Vision
    - Mission
    - Purpose
  - o Type of Organization \* *DHHH community associations who align with the goals of the Hoa Aina Partnership agreement will be given priority.*
    - DHHH community organization
    - Non Profit
    - Corporation
    - Trust
    - Foundation
    - Etc.
  - o Organization History: Briefly describe how, when, and why your organization was created?
  - o Organization Service: Briefly describe how your organization services the Hawaiian Homes Lands Trust, its beneficiaries and/or the Native Hawaiian Community?
    - Share a brief history of initiatives (who, what, where, why, how: note if initiatives are/were on DHHH lands or in service of DHHH communities)

### Project Summary

- o Title of Project/Initiative
- o Length of Agreement/Partnership
- o Island and Region of Project
- o DHHH Island Plan Land Use Designation of area applying for
- o Does your project align with DHHH Regional Plan Priority Project or DHHH Special Area Plan
- o Specific physical description of project land base
- o Project Summary (Brief description of project. Who, What, Where, Why, How)
- o Community (Piko-Out Model – see attached) Describe your Piko (those present and primary contributors to the project). Describe your Kaizuku (those you share space with but not necessarily active within project. Describe your Kahua Kokoo (the partnerships, non-geographic residents, those who are contributors to the project but are not decision makers and primary contributors)

DRAFT Document DHHH, Hoa Aina Partnership Proposal  
February 2018 Pelika Andrade

### Project Proposal

- Problem/Opportunity Narrative (Description of the need/problem/opportunity you are addressing)
- Project Narrative (Description of project and the activities to be carried out. If project will be implemented in phases, briefly summarize each phase)
- Focus Area Narrative (Describe how the project will address the focus areas of this agreement)
  1. Honoring place and our kini akua (natural resources)
  2. Honoring heritage
  3. Supporting the WE and not the I (kokua aku – kokua mai)
  4. Strengthening relationships between multiple generations
  5. Grow knowledge and care for the keepers of knowledge
- Budget
  - o Additional Budget form attached
- Project timeline/schedule Narrative
  - o Additional timeline table attached
- Qualifications and experience in planning & implementing the proposed project. How are you assuring its success?
- Challenges: Explain challenges that may arise from the implementation of this project on the proposed land base and briefly explain why the benefits of the project out-weight the potential challenges.

### ATTACHMENTS:

- Current list of board members, include positions/title & term expiration date. Also identify if each board member is a beneficiary or not.
- IRS 501(c)(3) determination letter (if applicable)
- Articles of Incorporation, with certification stamp from DCCA
- Certificate of Good Standing from DCCA
- Most recent financial statement, treasurer's report, or IRS Form 990
- Optional: Any other material describing the organization's vision, mission and purpose
- Optional: Any other documents – organization brochure, newsletter, reports that are pertinent to the project and/or history of work related to the proposed project.
- Letters of Support or Letters of Commitment: supporting documentation from individuals and/or organizations that support or are committed to the activities and goals of the project. Additional strength of the LOSA/OC will be the inclusion of DHHH organizations and those working within Native Hawaiian communities and initiatives.

DRAFT Document DHHH, Hoa Aina Partnership Proposal  
February 2018 Pelika Andrade



# Considerations that Need to be Addressed Prior to Implementation

- Hoa ‘Āina Agreement Application can be “one piece of the puzzle” related to natural and cultural resource management; BUT:
  - Need a clear internal process and procedure to handle unsolicited requests for non-homestead use of Hawaiian Home Lands;
  - Need internal procedure/process to accept or not accept submitted applications and procedure/process on land disposition award;
  - These internal procedures need to be formally adopted and followed;
  - Needs to be consistent with the Revocable Permit Program Update.





**Mahalo!**

**We look forward to Hearing Commissioners'  
Feedback and Mana'o**