



An Invitation for You and Your ‘Ohana to Attend

# DHHL PŪLEHUNUI PLANNING WORKSHOPS

## DHHL BENEFICIARY PLANNING WORKSHOPS

### *Aloha Maui Beneficiaries!*

Please join us at two (2) Saturday mornings to engage in a planning process that will determine the future of DHHL lands at Pūlehunui (see map on reverse side). These Planning Workshops are for Beneficiaries. This is your opportunity to provide your input and ideas early in the planning process... where it can really make a difference!

In addition, we will give you an update on the State’s Pūlehunui Regional Infrastructure Master Plan which will support the development of DHHL and other State-owned lands in the region.

**DATES:** Saturday, April 21 & 28, 2018

**TIME:** 8:30 am - 11:30 am

**PLACE:** Maui High School Cafeteria  
660 Lono Avenue  
Kahului, HI 96732

Please RSVP by Friday April 13, 2018 via the online survey (link provided to the right). →

If you require special assistance for the meeting, please contact Selena Pang or Julie-Ann Cachola by Friday April 13, 2018.

## Background Information

The Maui Island Plan identifies DHHL’s Lands at Pūlehunui for Commercial, Industrial, and General Agriculture uses.

### **Pūlehunui North (184 acres)**

The Pulehunui North Property is strategically located on Maui Veterans (Mokulele) Highway between Kihei and Kahului. DHHL’s Maui Island Plan designates Pūlehunui North for Industrial and/or Commercial/Industrial development to take advantage of its strategic location. Commercial/Industrial development will generate revenue that can help support DHHL’s programs. Currently no income is generated by DHHL lands on Maui.

### **Pūlehunui South (646 acres)**

The Pūlehunui South property is designated for General Agricultural use (546 acres) and for Industrial uses (100 acres). Restrictions in the area prevent any residential development.

## TAKE THE ONLINE SURVEY

Help us prepare for the workshops by completing our online survey. The survey will help us identify issues important to Beneficiaries and will help us frame the discussion. Your input is important to us!

The online survey can be filled out at: <https://www.surveymonkey.com/r/DHHLPulehunui>

Please respond to the survey by Friday April 13, 2018

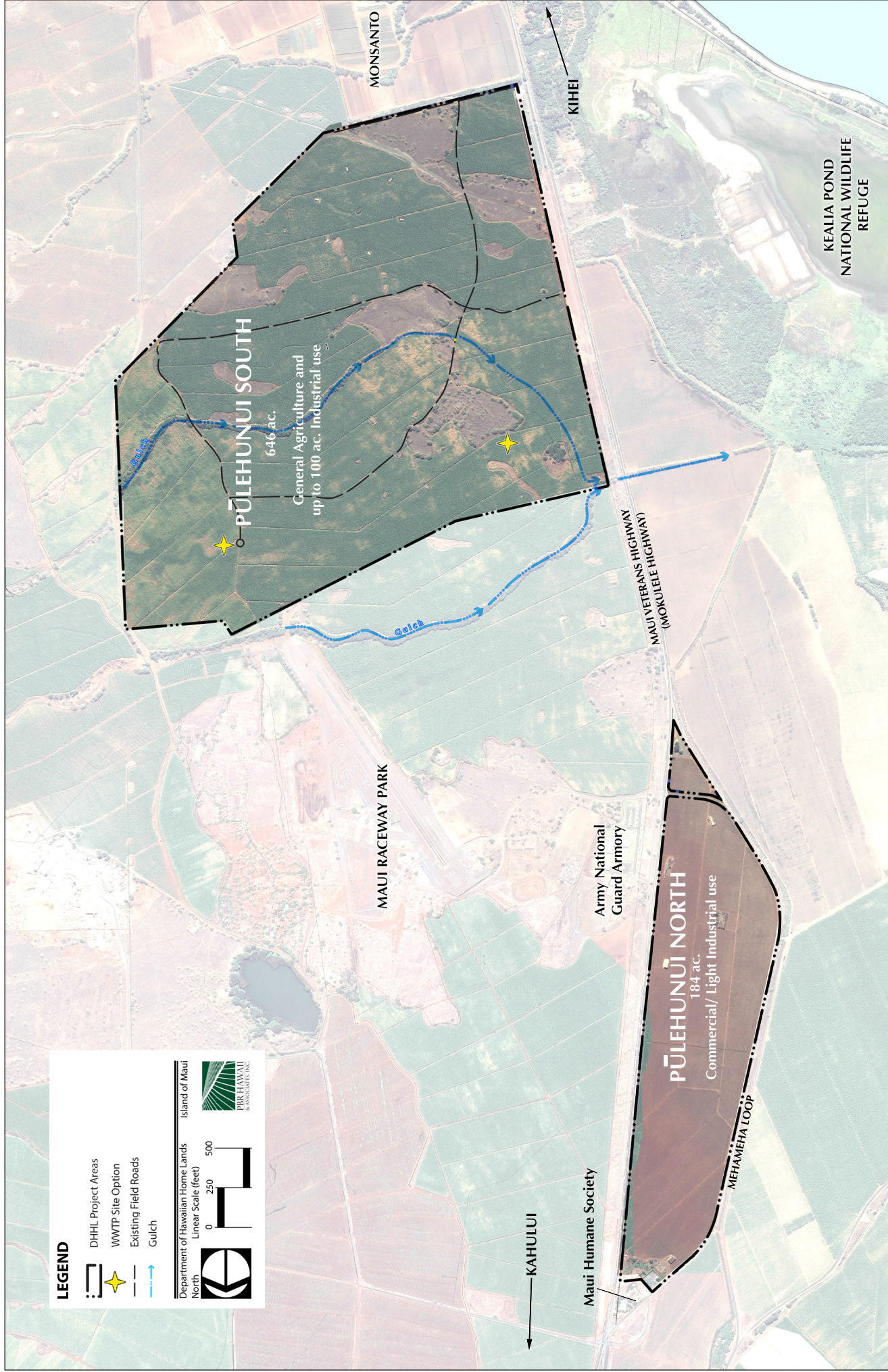
## For more information, please contact:

Julie-Ann Cachola  
DHHL Planning Office  
(808) 779-5084  
julie-ann.cachola@hawaii.gov

Selena Pang  
PBR HAWAII & Associates, Inc.  
(808) 521-5631  
DHHLPulehunui@pbrhawaii.com



# DHHL LANDS AT PŪLEHUNUI



Disclaimer: this graphic has been prepared for general planning purposes only and should not be used for boundary interpretations or other spatial analysis.

Date: 03/21/2018

**PLEASE SHARE YOUR IDEAS BY TAKING THE ONLINE SURVEY AT:**  
<https://www.surveymonkey.com/r/DHLLPulehunui> **MAHALO!**