



Beneficiary Consultation

Department of Human Services

Ke Kama Pono Program; Kalaeloa, O'ahu and Wailuku, Maui

License No. 705

May 30, 2018

6:00 to 8:00 p.m.

Kapolei, O'ahu

Agenda

I. WELCOME

Introductions

Meeting Format

Consultation Rules

II. WHY WE ARE HERE TODAY

Present information on DHHL 's extension of license No 705

Present information on DHS "Safe House" Project

Answer questions and get your input on the proposed project

IV. FACILITATED DISCUSSION

V. NEXT STEPS

Consultation Rules

- One speaker at a time may speak for 3 minutes
- Listen to understand
- Please turn off or silence cell phones
- Keep side conversations to a minimum
- Everyone who wants to be heard will be heard
- It's okay to disagree as long as we are respectful of each other
- Maintain an open and positive attitude
- Identify yourself as a Beneficiary or Non-Beneficiary

Meeting Objectives

At the end of today, we will have:

- ❑ An indication of support for license extension
- ❑ Shared understanding of the Safe House Project
- ❑ Indication of the level of Beneficiary support for programs and services provided by the DHS Safe House Project

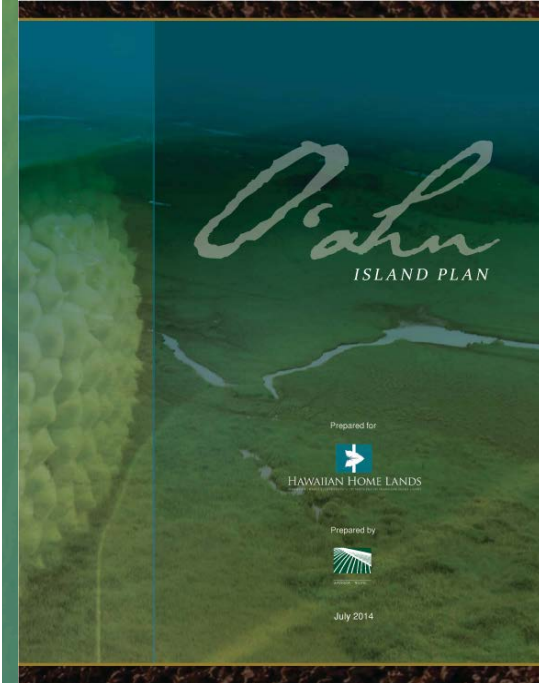
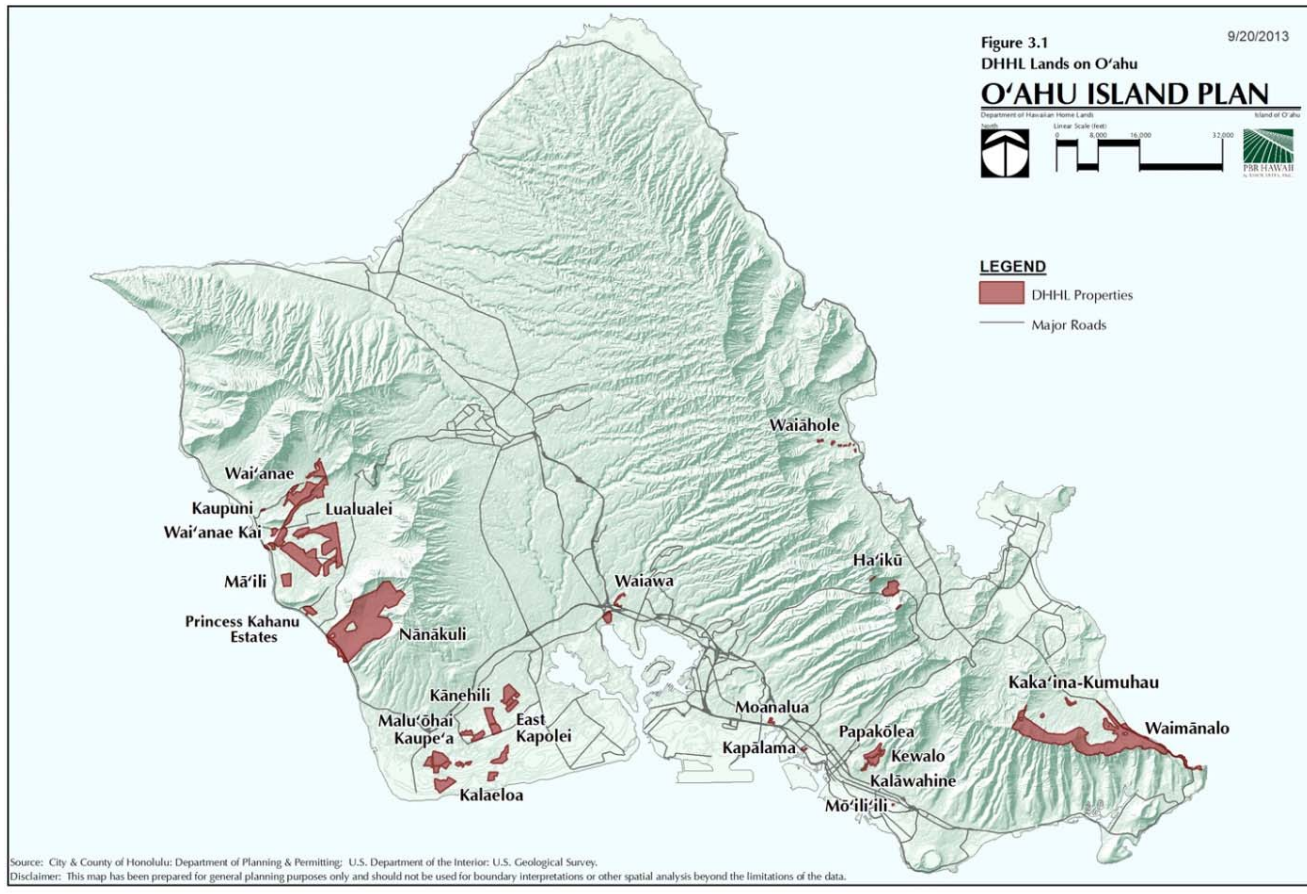
HHC Consultation Process

- **HHC Policy of Consulting with Beneficiaries for:**
 - Land Use Projects, Long-Term Leases/Licenses
- **Consultation Meeting**
 - What's Being Proposed?
 - Do the Beneficiaries Support the Project?
 - Will the Project Provide Benefits for Beneficiaries?
 - Record Beneficiary Input
- **One-Month Consultation Period**
 - Receive Written Comments (email or mail)
- **Consultation Report to HHC**
 - Who Came to the Meeting
 - Summarize Main Points and Attach Full Record of Comments

License No. 705

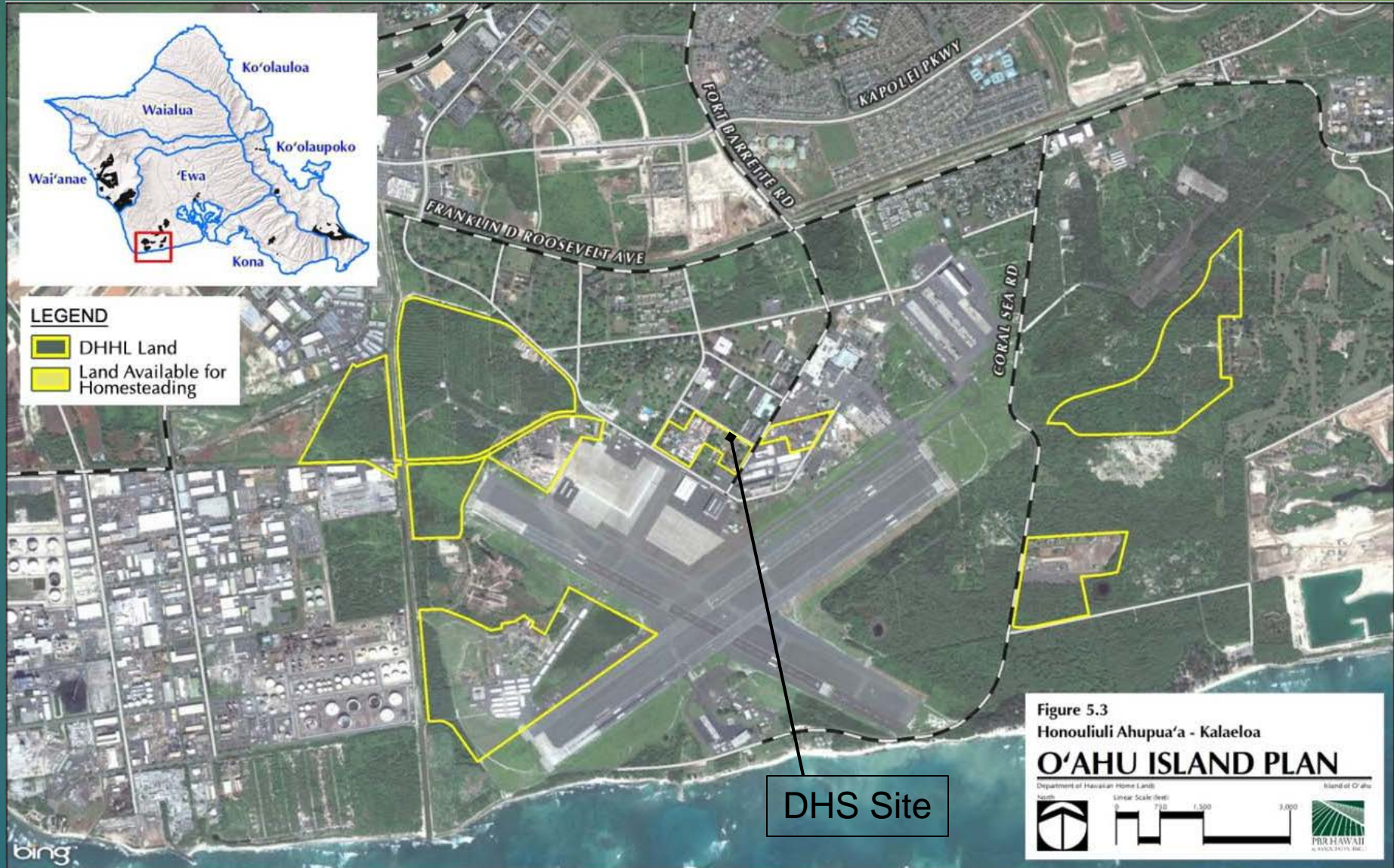
- February 2008 – the HHC approves issuance of License No. 705 to the DHS for the purpose of constructing, maintaining, and operating Child Caring Institution facilities (“Safe Houses”) in Kalaeloa, Oahu at TMK No. (1) 9-1-013:024 (por.) and in Wailuku, Maui at TMK No. (2) 3-4-011:032.
- Land Area – Kalaeloa, O’ahu – 1.157 Acre and Wailuku, Maui – 0.187 Acre
- Term – Ten (10) years; 4/22/2008 – 4/21/2008; seeking five (5) year extension with an option to extend for an additional five (5) years
- Current Annual Rent - \$10,740.00; proposed rent for extended term - TBD
- Site Improvements – One-story free standing “Safe House” facility structure containing an area of approximately 2,400 square feet, more or less
- O’ahu Island Plan designates the Kalaeloa area for Industrial Use; Maui Island Plan designates the Wailuku parcel for Commercial use
- Maintain an open and positive attitude
- Identify yourself as a Beneficiary or Non-Beneficiary

O'ahu Island Lands



~8,154 acres
(4.0% of Trust Land)

Kalaeloa Land Use Summary



Department of Human Services

Presentation of Safe House Program

Discussion Questions

- 1) What do you see are the social, cultural & economic benefits to you and your community?
- 2) On a Scale of 1 to 5, how strongly do you support the DHS Safe house project?

Next Steps

30-day comment period comments due by June 30, 2018

Beneficiary Consultation report July 2018

Hawaiian Homes Commission disposition July 2018

**Mail Comments to:
Department of Hawaiian Home Lands
Attn: Land Management Division
P.O. Box 1879
Honolulu, Hawaii 96805**

**Email comments to:
DHHL Planning Office
DHHL.Planning@hawaii.gov**