



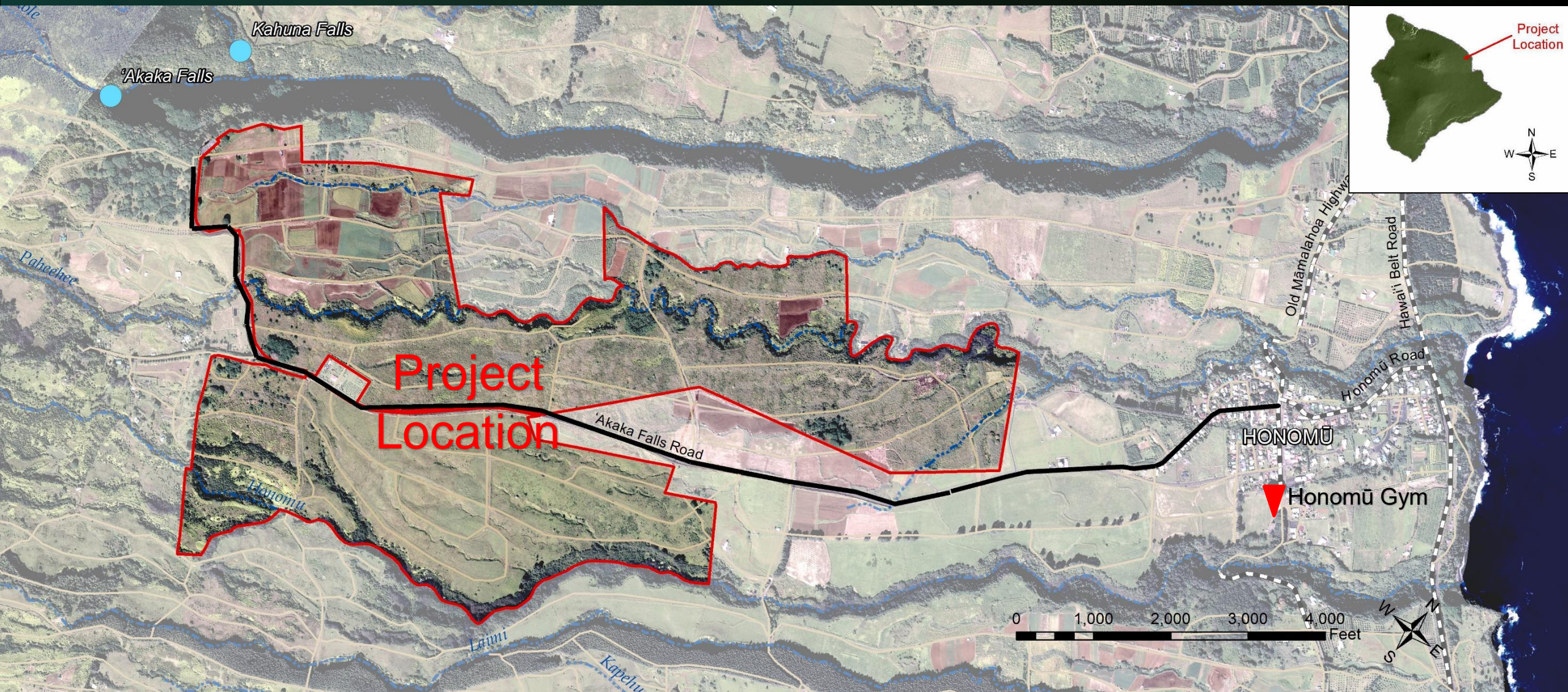
HAWAIIAN HOME LANDS

HAWAIIAN HOMES COMMISSION
DEPARTMENT OF HAWAIIAN HOME LANDS

HONOMU SUBSISTENCE AGRICULTURAL HOMESTEAD COMMUNITY

- Introduce Project
- Why Agriculture?
- Why Honomu?
- How do we get to Awards?

Honomu, South Hilo







Honomu Subsistence Agricultural Homestead

The People—Hawaii Island Ag Wait List

- Top 500 applicants
- Applied between 1952 and 1985
- Average Age is 66 years old.

Honomu Subsistence Agricultural Homestead

GOAL: Award Ag Lots -- Agriculture

- **Administrative Rule Changes**
 - ✓ **Small lots < 3 acres**
 - ✓ **Agriculture use/cultivation required (3 yrs)**
 - ✓ **Farm Plan not required**
 - ✓ **Residence on Property optional**
- **Develop Ag Support Services**
- **Rural Subdivision Standards**

Why Agriculture?

- Hawaiian Homes Commission Act
- Rehabilitation of a People
- Resilience
- Sustainability

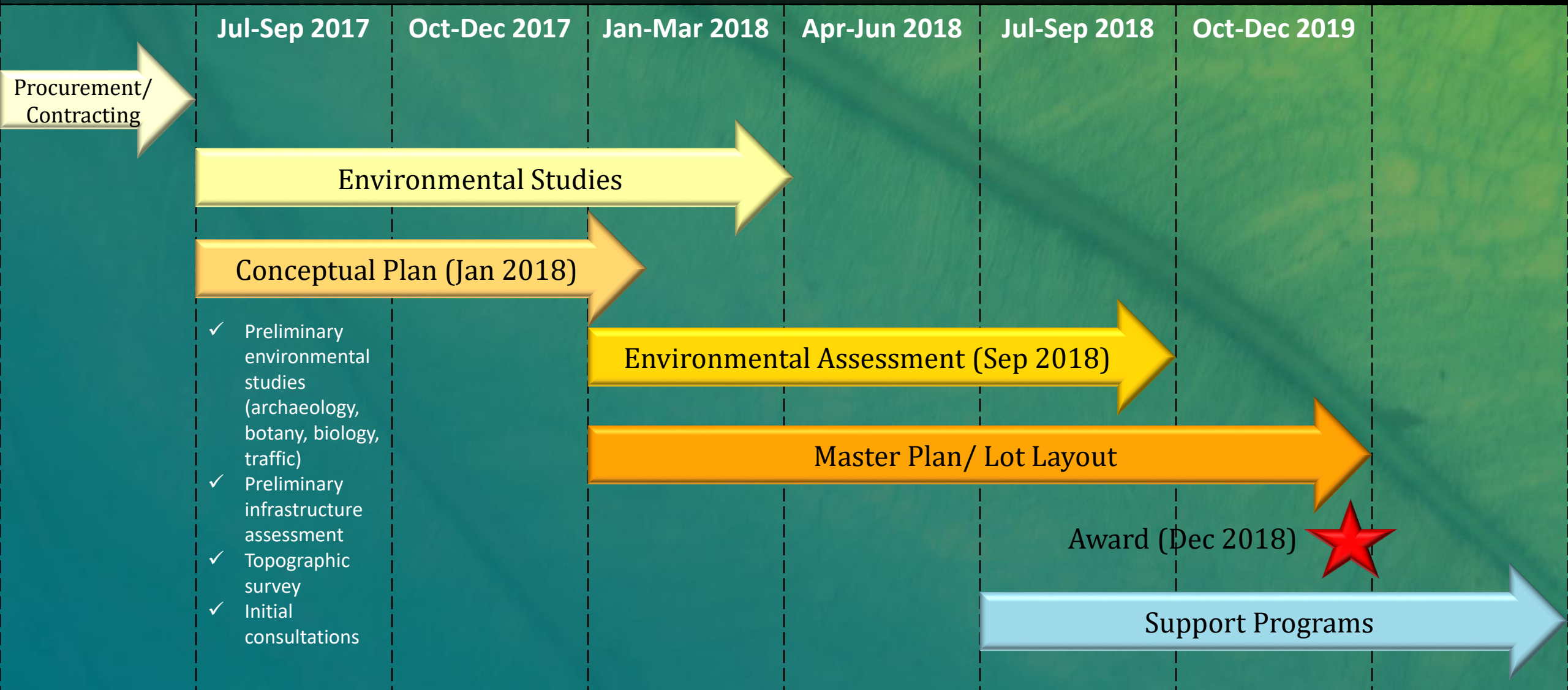
Why Agriculture? The Opportunity

- Agricultural Waitlist is now longer than the Residential Waitlist
- 5% of agricultural lessees cultivating land
- Opportunity to develop programmatic supports—training workshops, expertise, organizational development
- Opportunity to integrate agricultural support facilities into community plan
- Dedicated CTAHR staff – direct assistance, training workshops

Why Honoumu?

- Accessible
- Arable Land
- High Rainfall (150" – 225")
- Access to Ag Support Networks
- Good relationship with the county and an MOU that clarifies responsibilities
- Hawai'i Island has the longest Ag Waitlist

How Do We Get to Awards?



Envision Honou

A landscape photograph showing a grassy hillside with dense vegetation. A person is walking on a path that leads up the hill. The sky is overcast with grey clouds. The text is overlaid on the right side of the image.

BENEFICIARY MEETING #1
Tuesday, October 24, 2017
Keaukaha Elementary Cafeteria
7:00 p.m. to 9:00 p.m.