



HAWAIIAN HOME LANDS TRUST  
DEPARTMENT OF HAWAIIAN HOME LANDS

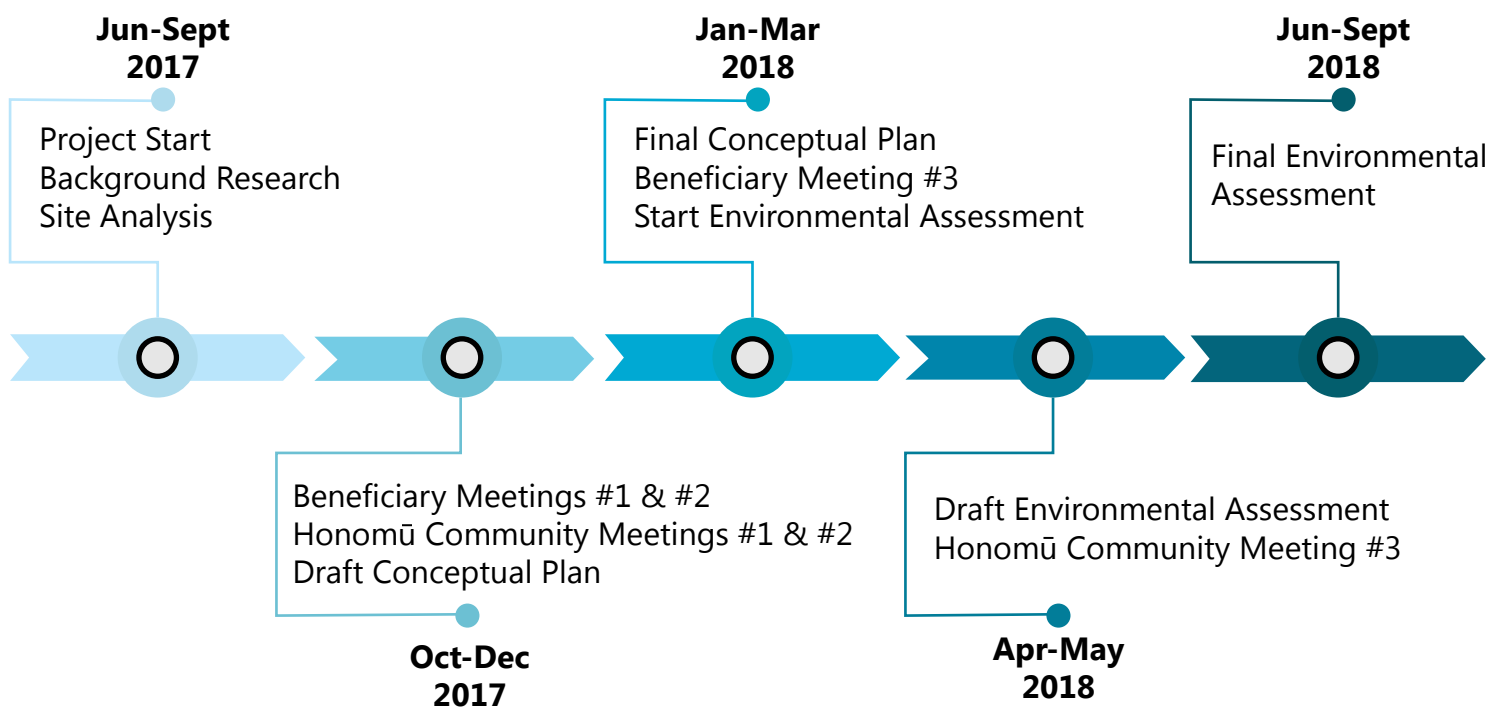
## Honomū Subsistence Agricultural Homestead Community Conceptual Plan and Environmental Assessment

The Department of Hawaiian Home Lands (DHHL) manages the Hawaiian Home Lands trust in order to develop and deliver land to native Hawaiians. DHHL is planning a new subsistence agricultural community on 766 acres in Honomū, South Hilo District, Island of Hawai'i. This will be the first new agricultural homestead community in almost 20 years.

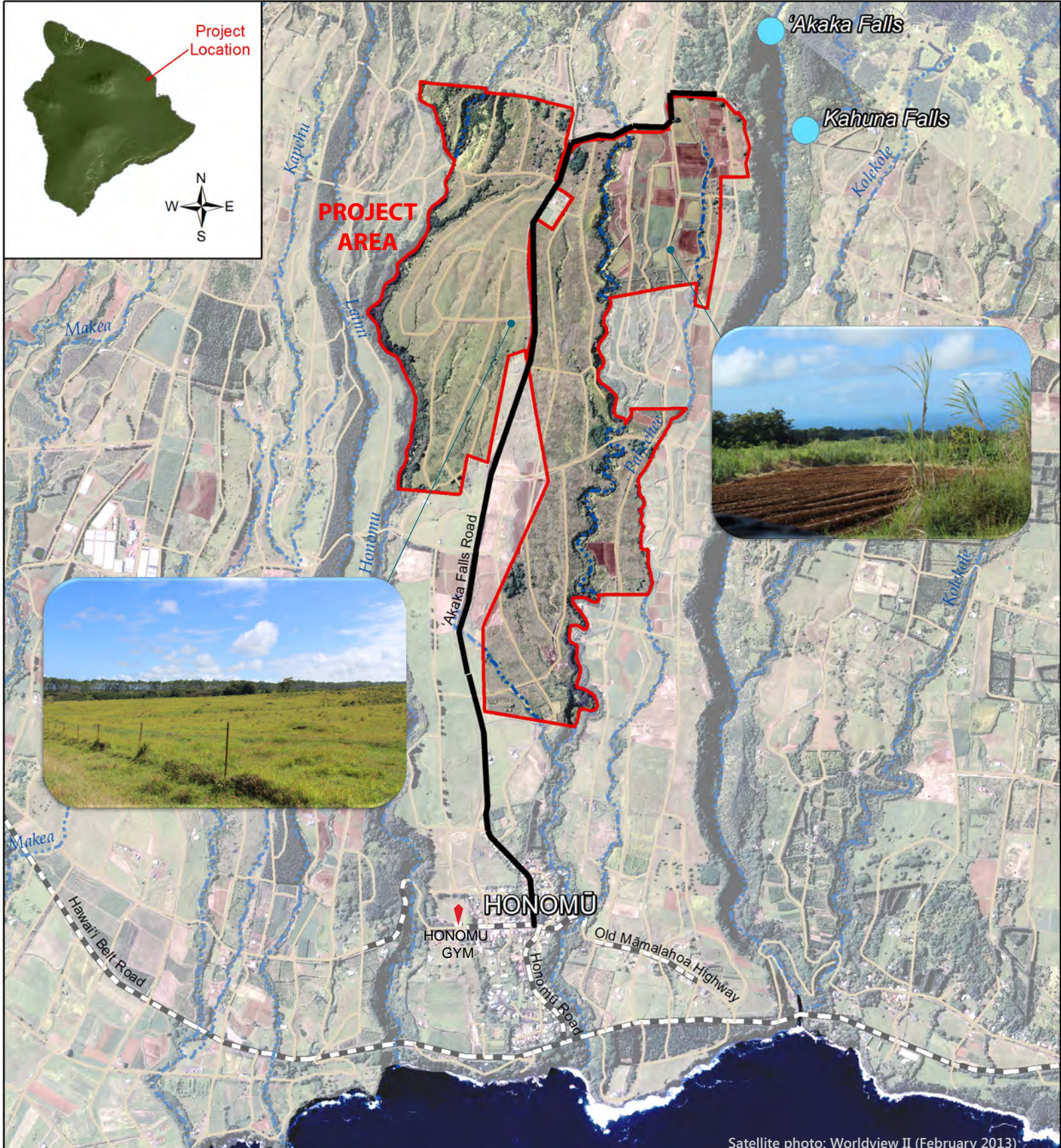
### About Subsistence Agriculture Homesteads

- ▶ 99-year lease
- ▶ Lots less than three acres in size
- ▶ Primarily for in-home consumption of products grown or raised on the lot
- ▶ Beneficiaries will be allowed, but not required, to reside on the lot

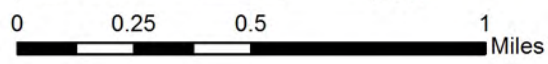
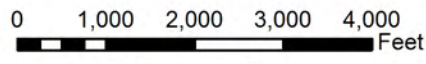
### Project Timeline







HONOMŪ SUBSISTENCE AGRICULTURAL HOMESTEAD COMMUNITY  
 PROJECT AREA



October 2017

**For more information please contact:**

Julie Cachola  
 DHHL Planning Office  
 (808) 620-9480  
 julie-ann.cachola@hawaii.gov

Sherri Hiraoka  
 Townscape, Inc.  
 (808) 550-3892  
 sherri@townscapeinc.com