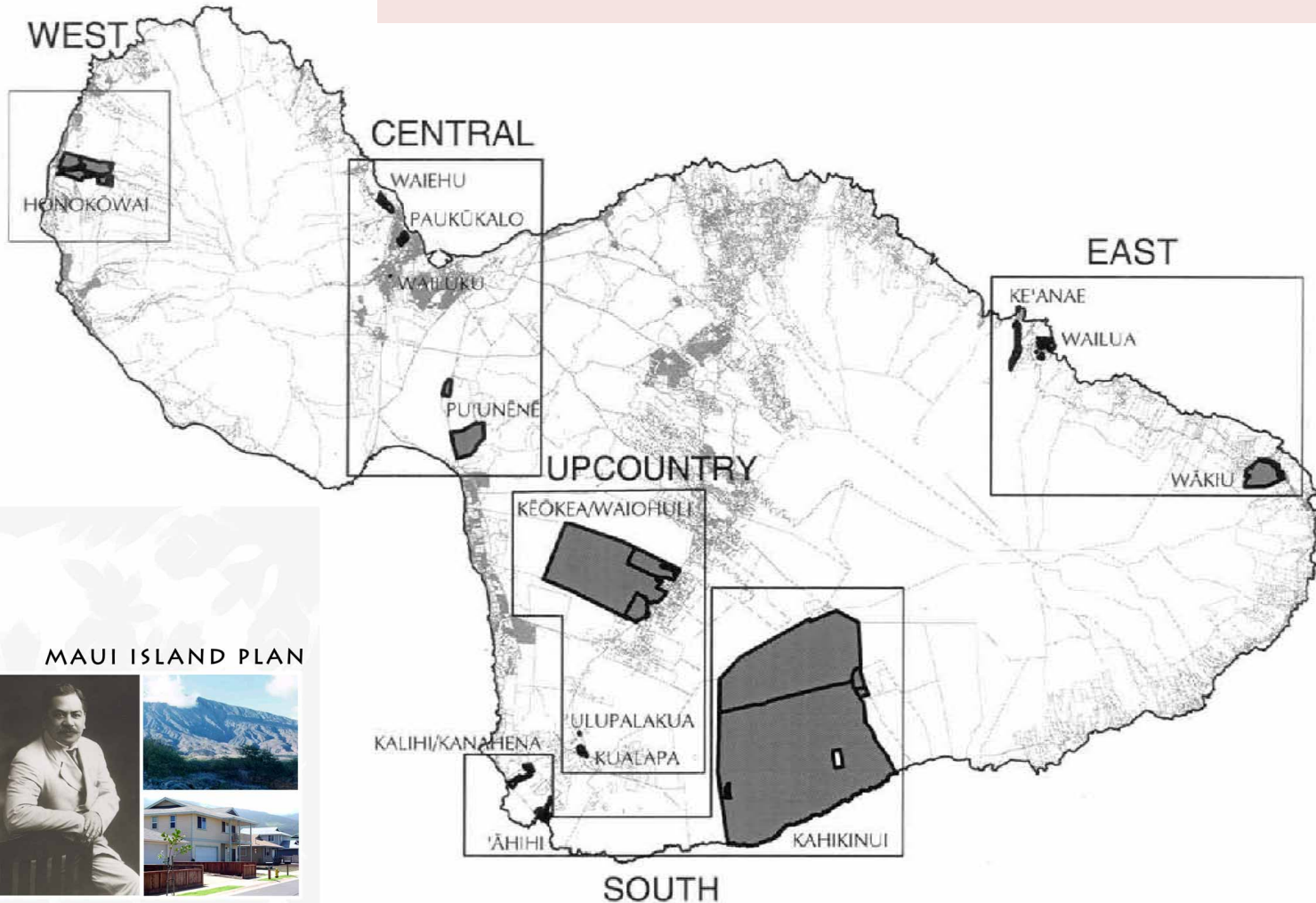


HAWAIIAN HOME LANDS
HAWAIIAN HOMES COMMISSION
DEPARTMENT OF HAWAIIAN HOME LANDS

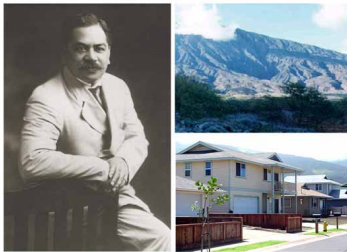
Planning Office Update

- Beneficiaries and Trust Lands
- Island Plan and Regional Plans
- Planning Projects

Maui Island Plan



MAUI ISLAND PLAN



Prepared for:
The State of Hawai'i
Department of Hawaiian Home Lands

Prepared by:



September 2004

Native Hawaiian Beneficiaries

Applicants

44,708 Statewide

20% Maui Applications

WAIT LIST	MAUI APPS
Residential	3,785
Agriculture	4,643
Pastoral	613
TOTAL	9,041

Lessees

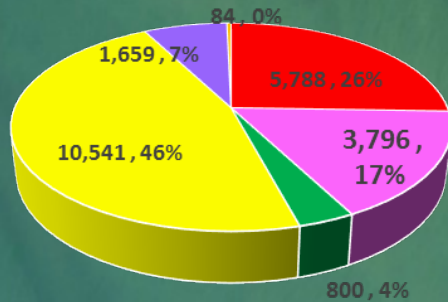
10,043 Statewide

14% Maui Lessees

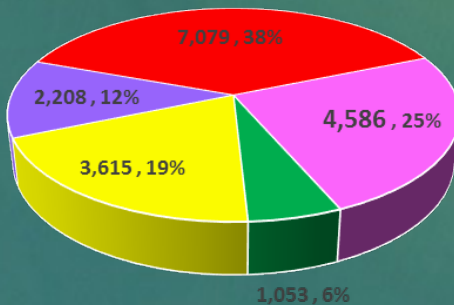
MAUI HMSTD	LESSEES
Hikina	32
Kahikinui	75
Kēōkea	65
Leiali'i	104
Paukūkalo	181
Wai'ehu Kou	361
Waiōhuli	608
TOTAL	1,426

ALL APPLICATIONS (n=44,708)

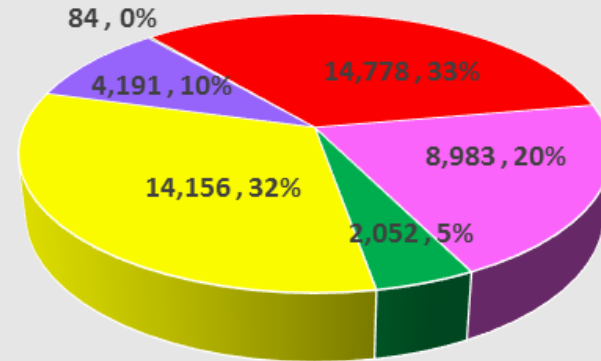
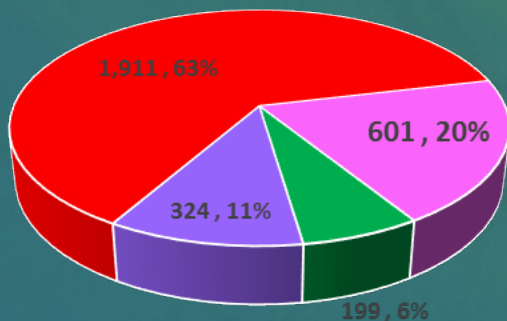
Residential Applications = 22,836



Ag Applications = 18,870



Pastoral Applicants = 3,092

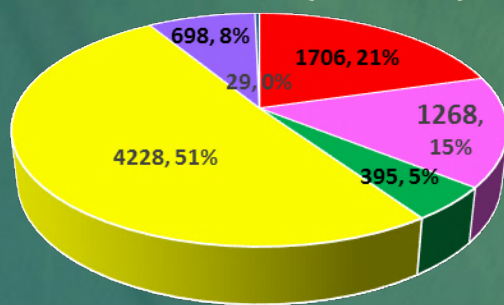


■ Hawai'i ■ Maui ■ Molokai ■ O'ahu ■ Kaua'i ■ Lana'i

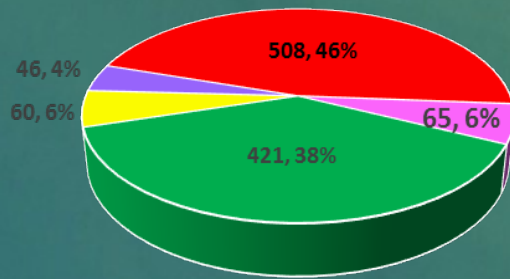
- 20% of all Applications are for leases on Maui;
- There is a demand for agricultural leases.

ALL LESSEES (n=10,043)

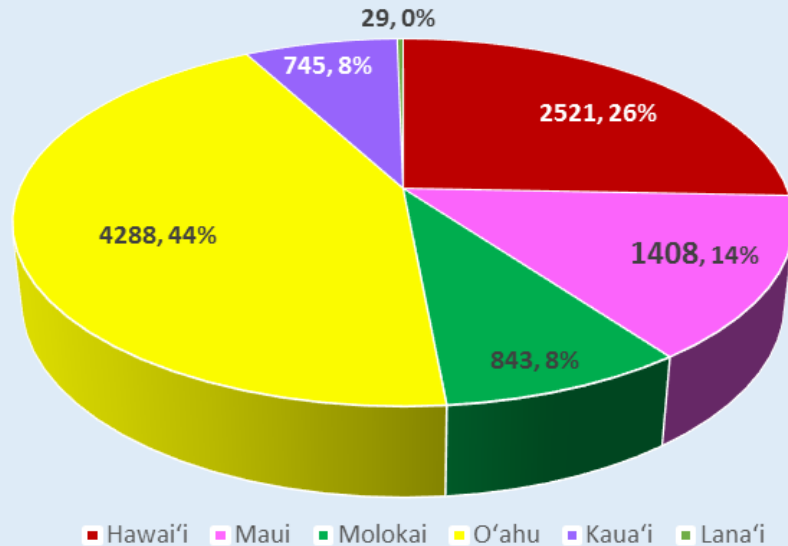
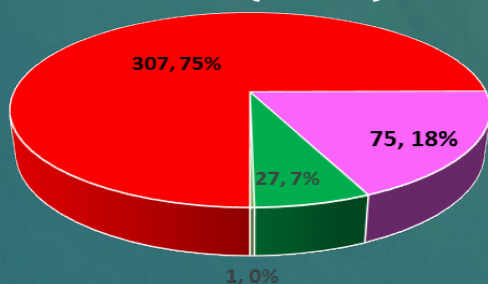
Residential (n=8,433)



Agricultural (n=1,177)

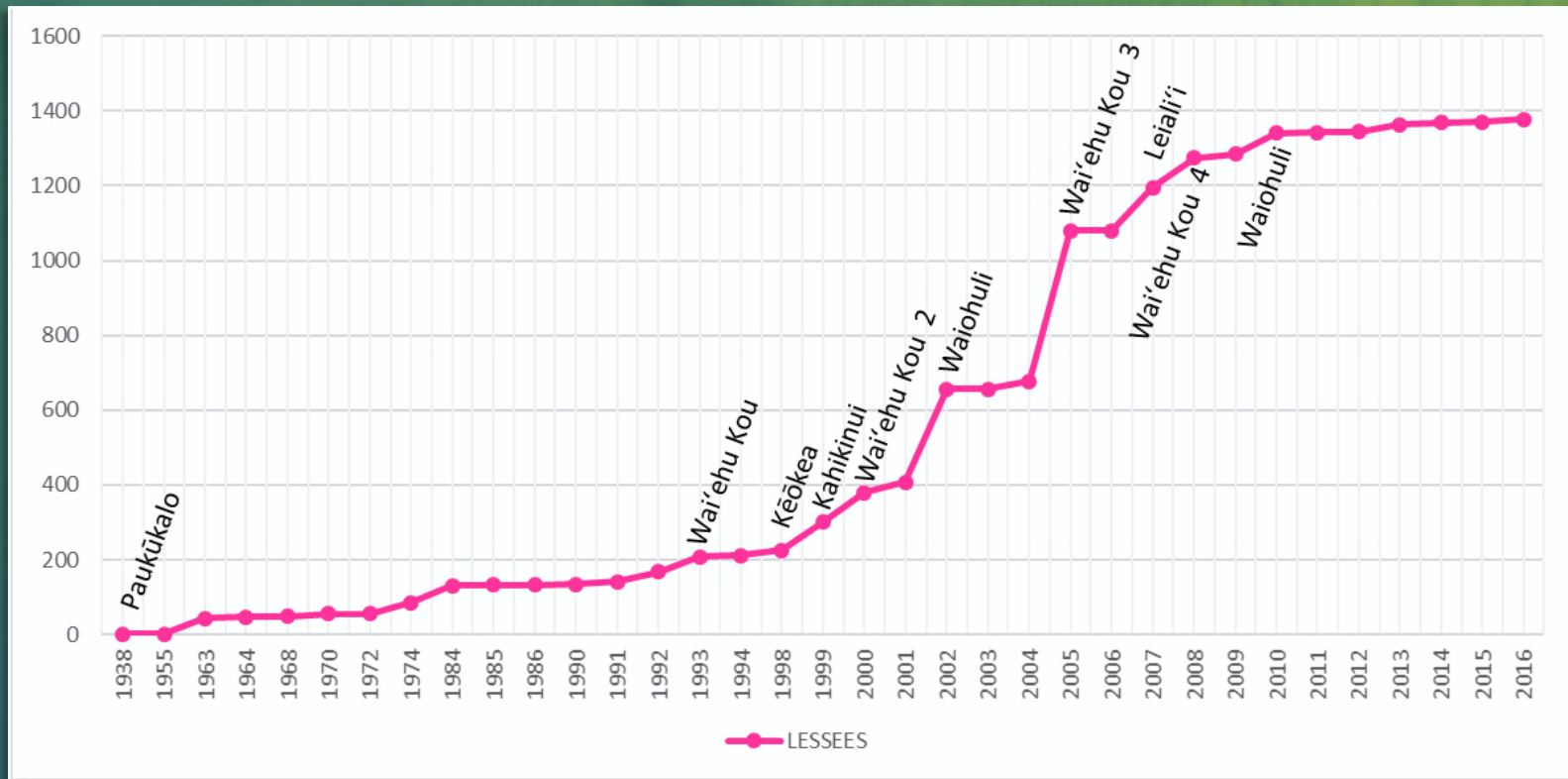


Pastoral (n=433)



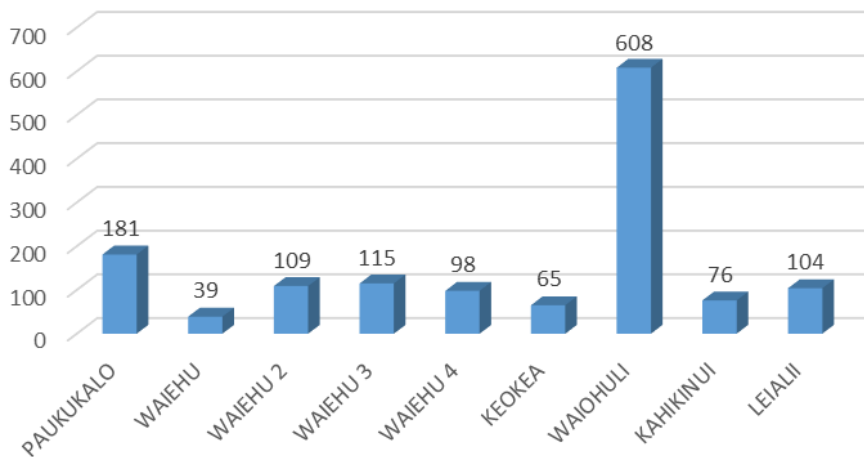
- 14% (1,400) of HHLs Lessees reside on Maui.
- This is consistent with proportion of land on Maui (16%).
- Agricultural awards have not been significant.

Maui Homestead Awards Settlement on the Land



- Lease awards on Maui started in 1963
- Late and slow to start.
- A lot lessees are original lessees.

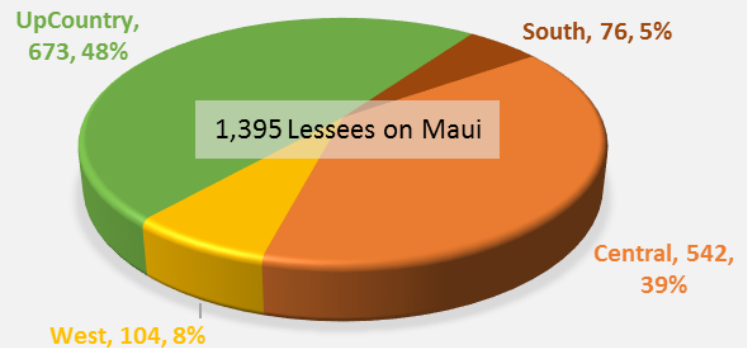
MAUI LESSEES BY HOMESTEAD AREA



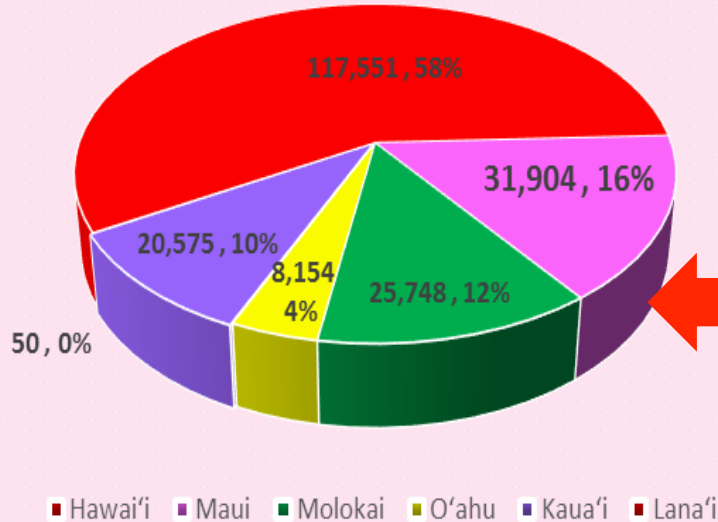
- There are 9 homestead areas on Maui;
- 3 homesteads do not have a homestead association;

- Maui Mokupuni meets the Sunday before HHC meetings with their Commissioner.
- Leaders are getting some traction now that they have regular meetings at the island level and they help each other out.
- Maui could be a power house because the leaders can work together.

REGIONAL DISTRIBUTION OF MAUI LESSEES

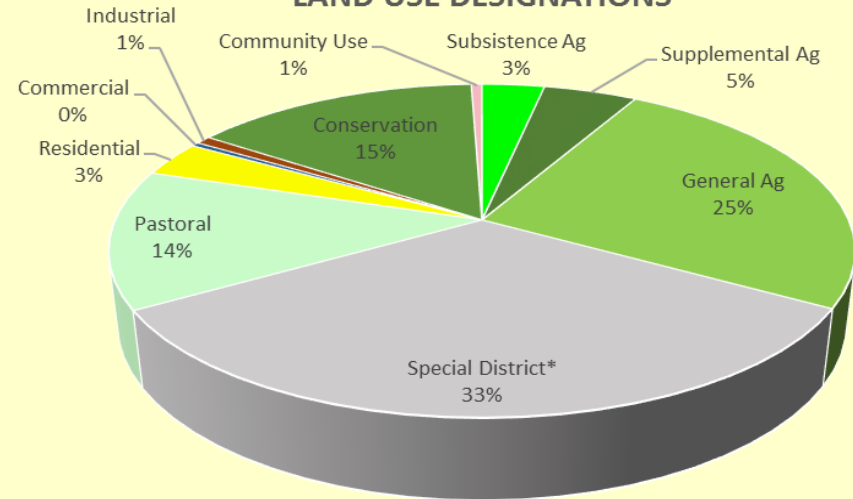


The Lands

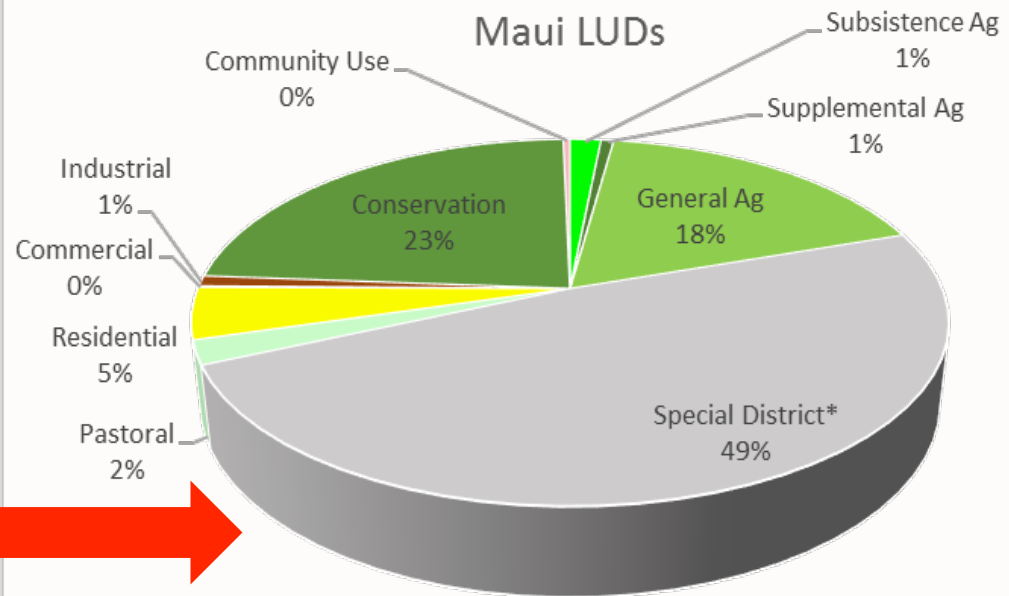


- Maui lands comprise 16% of the Hawaiian Home Lands Trust
- Nearly half of those lands require further study due to the presence of sensitive natural and cultural resources

LAND USE DESIGNATIONS

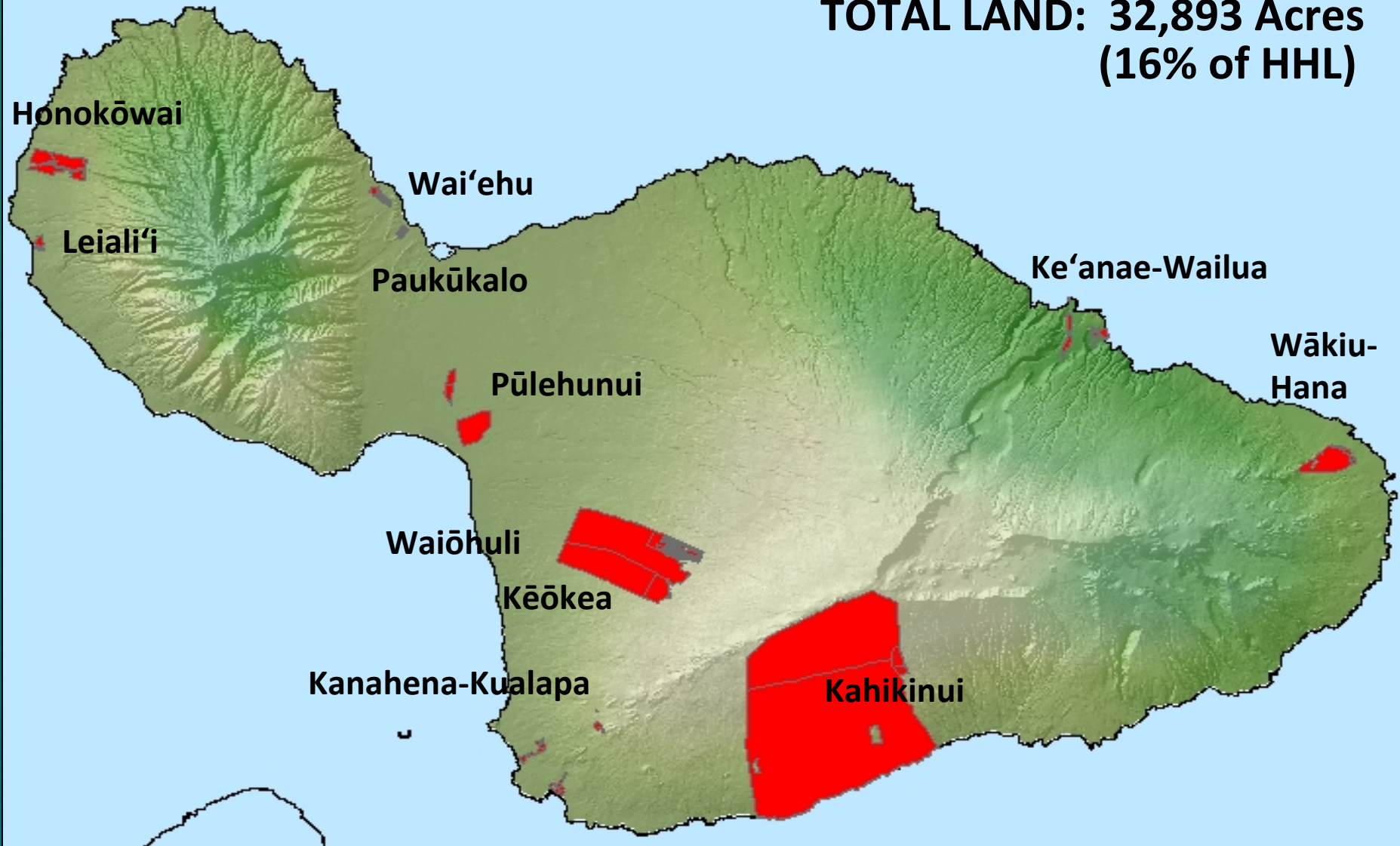


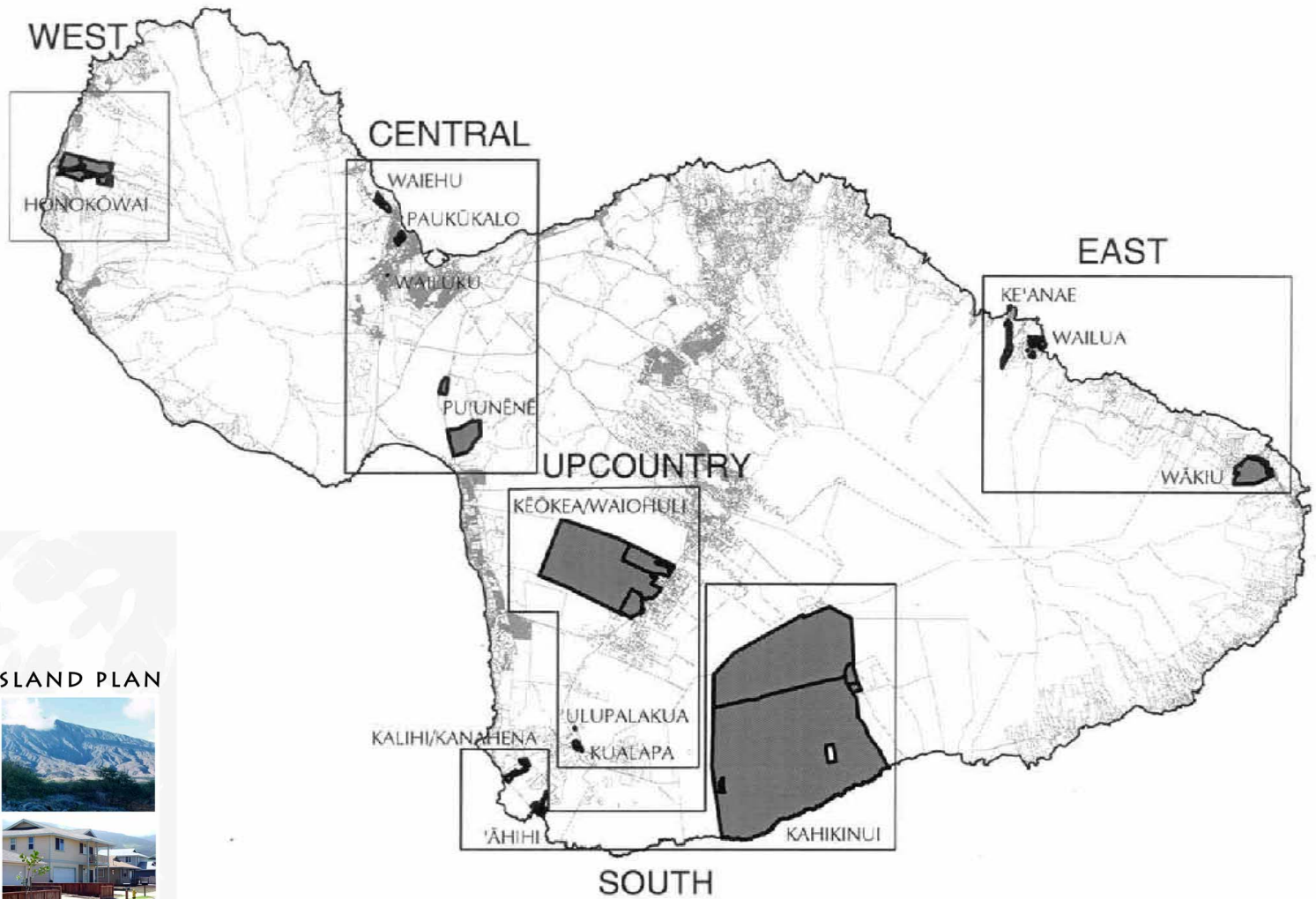
Maui LUDs



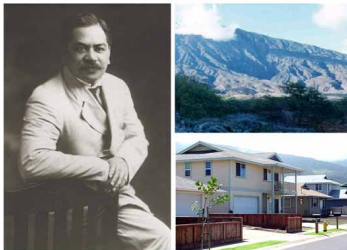
Maui Land Inventory

**TOTAL LAND: 32,893 Acres
(16% of HHL)**





MAUI ISLAND PLAN



Prepared for:
The State of Hawai'i
Department of Hawaiian Home Lands

Prepared by:

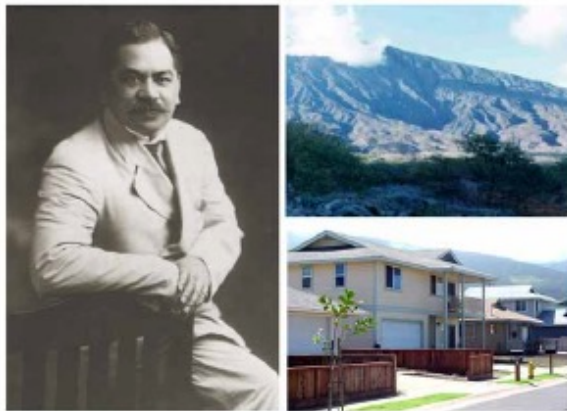


September 2004

Maui Island Plan

Maui Island Plan

MAUI ISLAND PLAN



Prepared for:
The State of Hawai'i
Department of Hawaiian Home Lands

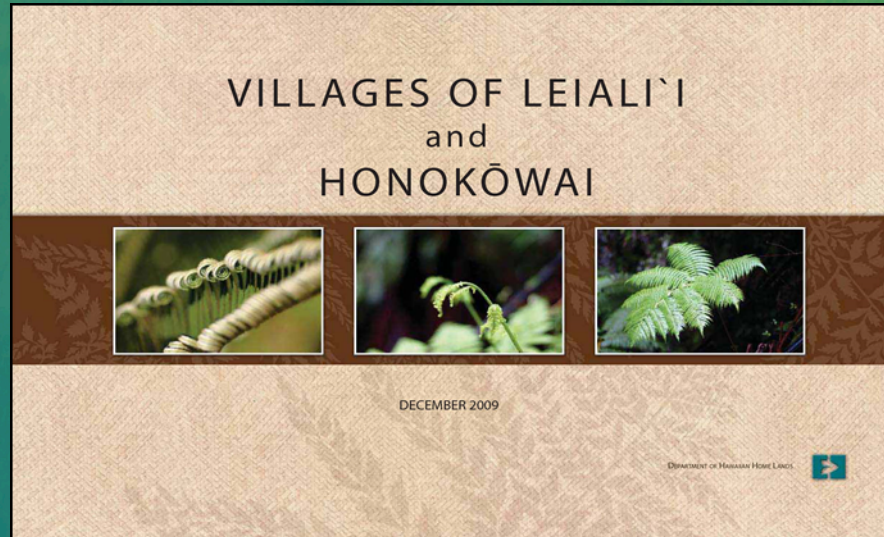
Prepared by:



September 2004

Land Use Designations	Acres	Percent
Subsistence AG	302	1%
Supplemental AG	28	0%
General AG	5,497	17%
Pastoral	775	2%
Residential	2,819	9%
Community Use	217	1%
Commercial	122	0%
Industrial	218	1%
Conservation	7,831	24%
Special District	15,585	49%
TOTAL ACRES	32,000	100%

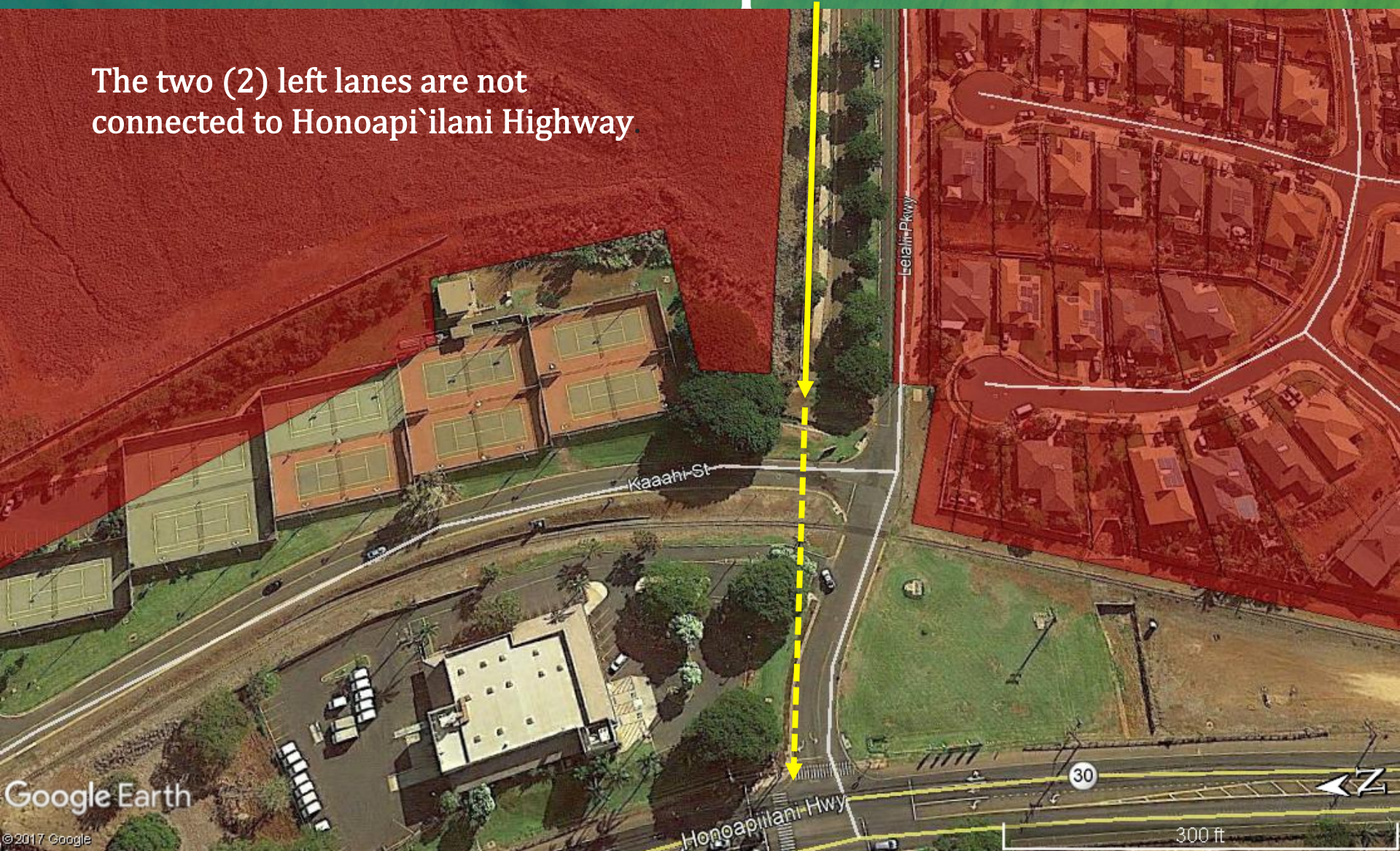
Leiali'i – Honokōwai Regional Plan Priority Projects



- **Leiali'i Parkway and Honoapi'ilani Highway Intersection Improvements**
- **Neighborhood Park Development**
- **Preliminary Review of Honokōwai Lands**
- **Water Source Development**

Leiali'i Parkway and Honoapi'ilani Highway Intersection Improvements

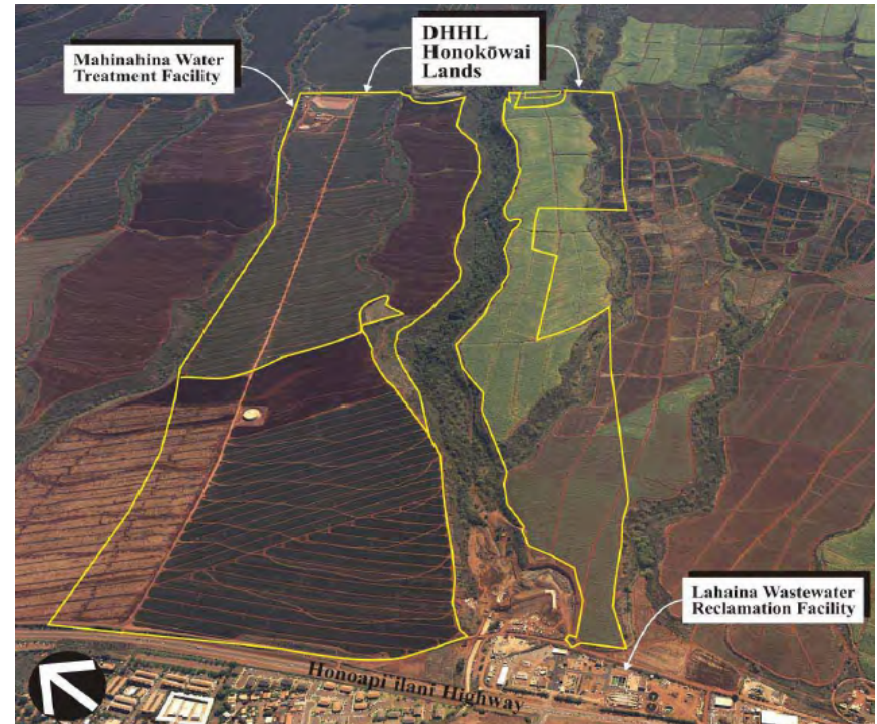
The two (2) left lanes are not connected to Honoapi'ilani Highway.



Park Development



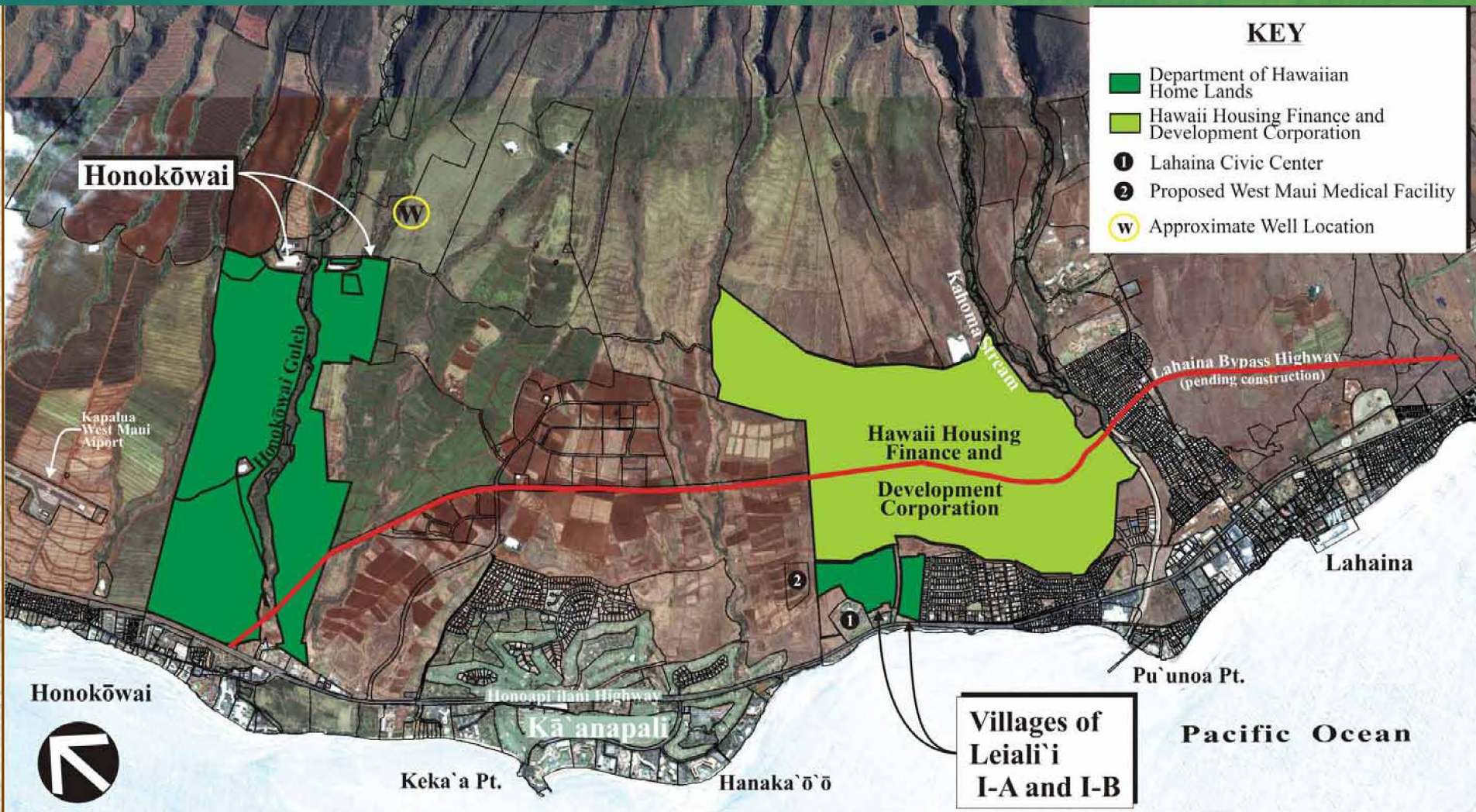
LAND USE	ACRES
Residential	326
Community Use (Parks, Facilities)	126
Industrial	33
Commercial Space	14
General Agriculture	128
Infrastructure/Open Space	223
TOTAL	850



Preliminary Review of Honokōwai Lands

Water Source Development

Water Source required to develop Leiali'i IB and Honokōwai



PAUKŪKALO-WAI`EHU KOU



JUNE 2010

DEPARTMENT OF NATURAL RESOURCES

Paukūkalo-Wai'ehu Kou Priority Projects

- Paukūkalo Armory Site Development
- Investigate Feasibility of Use of Wai'ehu Kou Vacant Lands between Wai'ehu Kou III and IV
- Address Traffic Congestion and Transportation Needs
- Address Drainage Issue at Paukūkalo
- Identify Community Economic Development Uses at Pu'unēnē-Paukūkalo
- Identify Sites for a Potential Community Center at Wai'ehu Kou

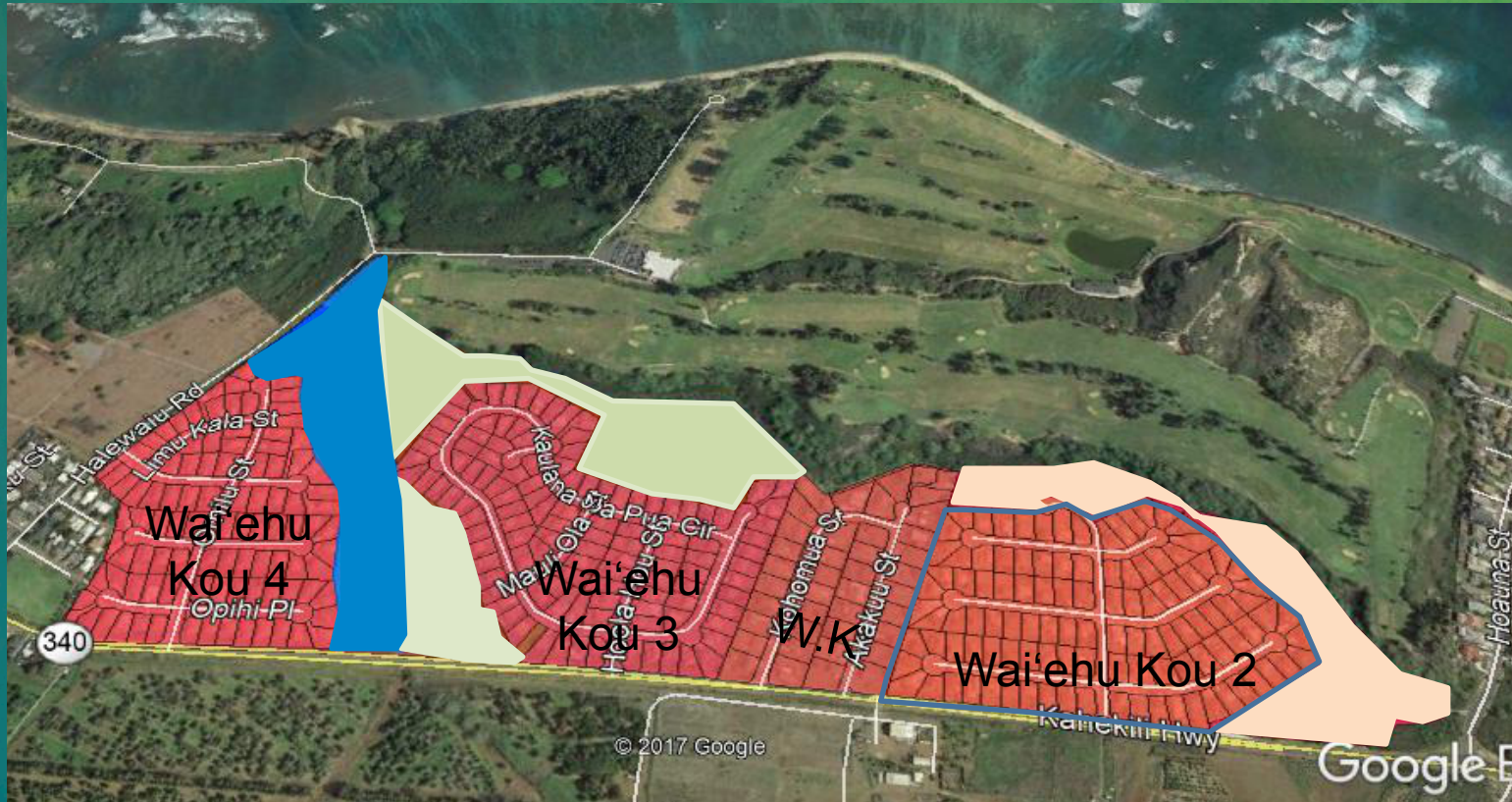
The community has identified the armory site at Paukūkalo for the development of a regional community center. Possible facilities include:

- Kūpuna center
- Certified kitchen
- Native Hawaiian Health Care Center in collaboration with Hui No Ke Ola Pono
- Community Gardens
- Cultural Center linked to the Haleki'i-Pihana Heiau State Monument



Paukūkalo Armory Site Development

Investigate the Feasibility of Using the Vacant Lands between Wai'ehu Kou III and IV For Gardening/Agriculture

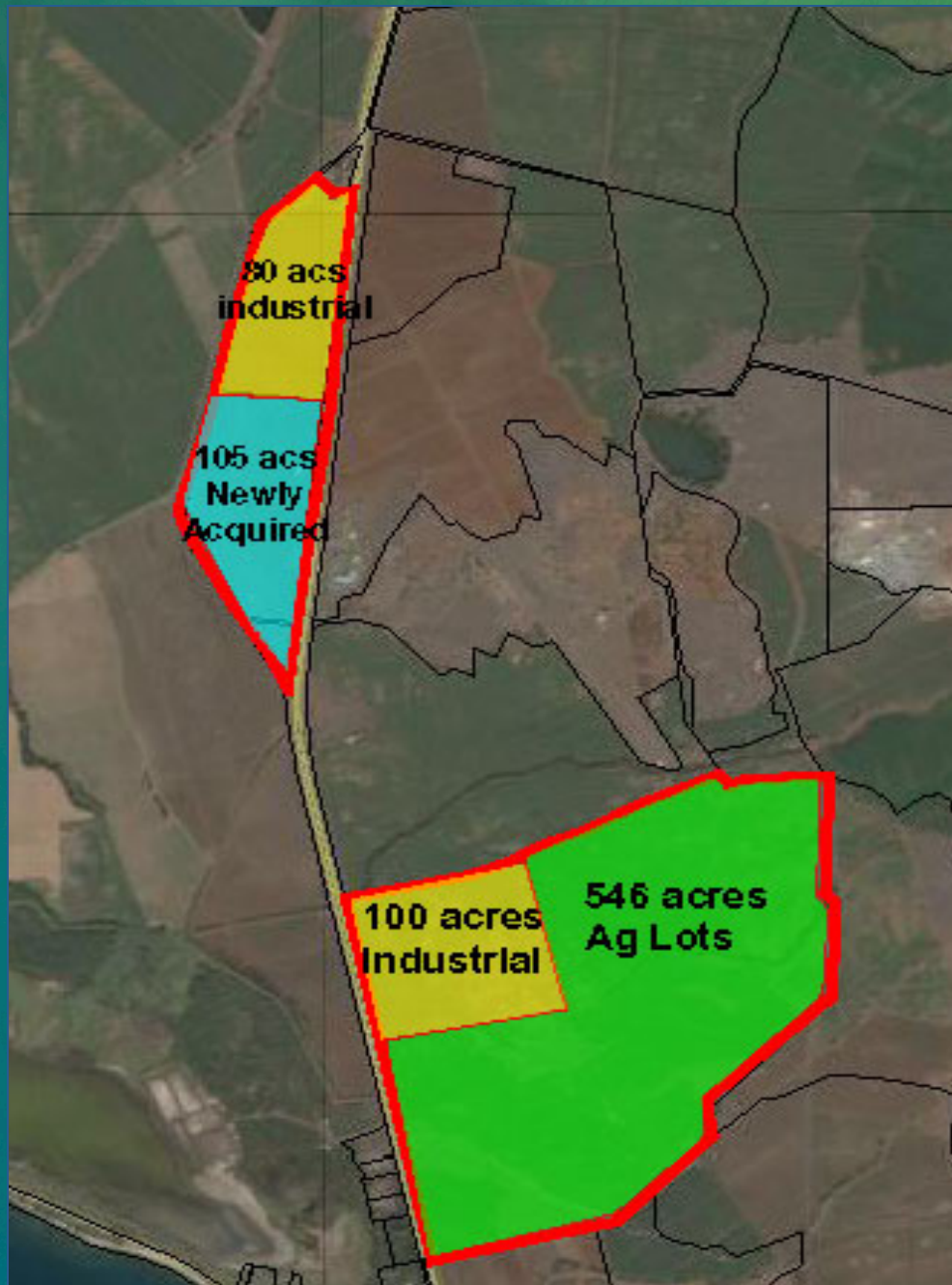


Identify CBED Opportunities at Pūlehunui



- Major highway linking Kihei to Kahului
- State Lands targeted for development
- Adjacent A&B/HCSC lands
- Opportunity for Maui homestead associations to generate revenue
- Opportunity to develop ag processing facilities
- Needs a water source, transmission lines and a Wastewater treatment Plant

Pūlehunui Master Plan



1. Prime strategic location for revenue generation activities.
2. Known as a “dust bowl,” it is inappropriate for residential development
3. Potential Agricultural homestead development

Master Planning Concept

GOAL:

To develop an integrated master plan that would coordinate infrastructure development and create an efficient and thoughtfully designed urban node contained by surrounding Important Agriculture Lands.

