



HAWAIIAN HOME LANDS  
HAWAIIAN HOMES COMMISSION  
DEPARTMENT OF HAWAIIAN HOME LANDS

# Maui Community Meeting

September 18, 2017  
Lahaina Civic Center



HAWAIIAN HOME LANDS  
HAWAIIAN HOMES COMMISSION  
DEPARTMENT OF HAWAIIAN HOME LANDS

# Chairman's Update

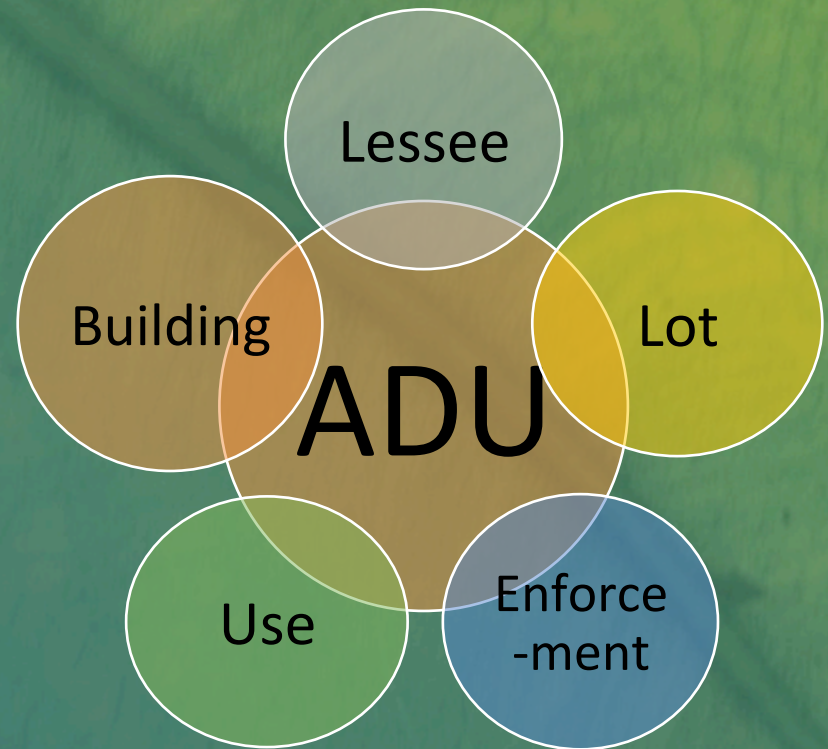
# 2017 DHHL Legislation Update



- (HB451) Lower Blood Quantum to 1/32 for Successors
- Signed by Governor Ige on the Molokai, July 5, 2017
- Still needs Congressional Approval

# ADU Program Considerations

- DHHL and County processes
- Components
  - Lessee: good standing
  - Lot: size, infrastructure
  - Use: 'ohana, rental
  - Building: size, attached/detached
  - Enforcement





HAWAIIAN HOME LANDS  
HAWAIIAN HOMES COMMISSION  
DEPARTMENT OF HAWAIIAN HOME LANDS

# DHHL Budget Update

# DHHL's "Sufficient Funds" & Executive Biennium Budget FY 2018 – Purpose #4

	FY2018 DHHL	FY2018 GOV	FY2018 HB100 CD1
A & O Budget Request (A)	(260) \$31,317,280	(200) *\$25,120,730	(200) *\$25,120,730
Operating R&M for Existing Infrastructure (A)	\$3,613,000		
CIP R&M for Existing Infrastructure (C)	\$24,115,000	\$5,000,000	\$10,600,000
Total HHC A & O Budget Request	\$59,045,280	\$30,120,730	\$35,720,730

\*Includes \$6,865,887 in both FY 18 and FY 19 to reflect the fringe benefit cost

# DHHL's "Sufficient Funds" & Executive Biennium Budget FY 2019 – Purpose #4

	FY2019 DHHL	FY2019 GOV	FY2019 HB100 CD1
A & O Budget Request (A)	(260) \$31,317,280	(200) *\$25,120,730	(200) *\$25,120,730
Operating R&M for Existing Infrastructure (A)	\$3,613,000		
CIP R&M for Existing Infrastructure (C)	\$18,500,000	\$5,000,000	
Total HHC A & O Budget Request	\$53,430,280	\$30,120,730	\$25,120,730

\*Includes \$6,865,887 in both FY 18 and FY 19 to reflect the fringe benefit cost

# DHHL's "Sufficient Funds" & Executive Biennium Budget FY 2018 – Purposes #1-3

	FY2018 DHHL	FY2018 GOV	FY2018 HB100 CD1
Lot Development (C)	\$73,425,000	\$20,000,000	\$34,000,000
Loans (C)	\$75,000,000		
Rehab Projects (C)	*\$32,121,000		\$1,500,000
Rehab Projects (A)	^\$15,509,100		
Total	\$196,055,100	\$20,000,000	\$35,500,000

\*Total in both FY 18 and FY 19 reflects projects requested by homestead leaders.

^ Includes \$2,765,000 in FY 18 and \$365,000 in FY 19 requested by homestead leaders.

# DHHL's "Sufficient Funds" & Executive Biennium Budget FY 2019 – Purposes #1-3

	FY2019 DHHL	FY2019 GOV	FY2019 HB100 CD1
Lot Development (C)	\$88,975,000	\$20,000,000	\$2,900,000
Loans (C)	\$78,100,000		
Rehab Projects (C)	*\$29,050,000		
Rehab Projects (A)	^\$13,109,100		
Total	\$209,234,100	\$20,000,000	\$2,900,000

\*Total in both FY 18 and FY 19 reflects projects requested by homestead leaders.

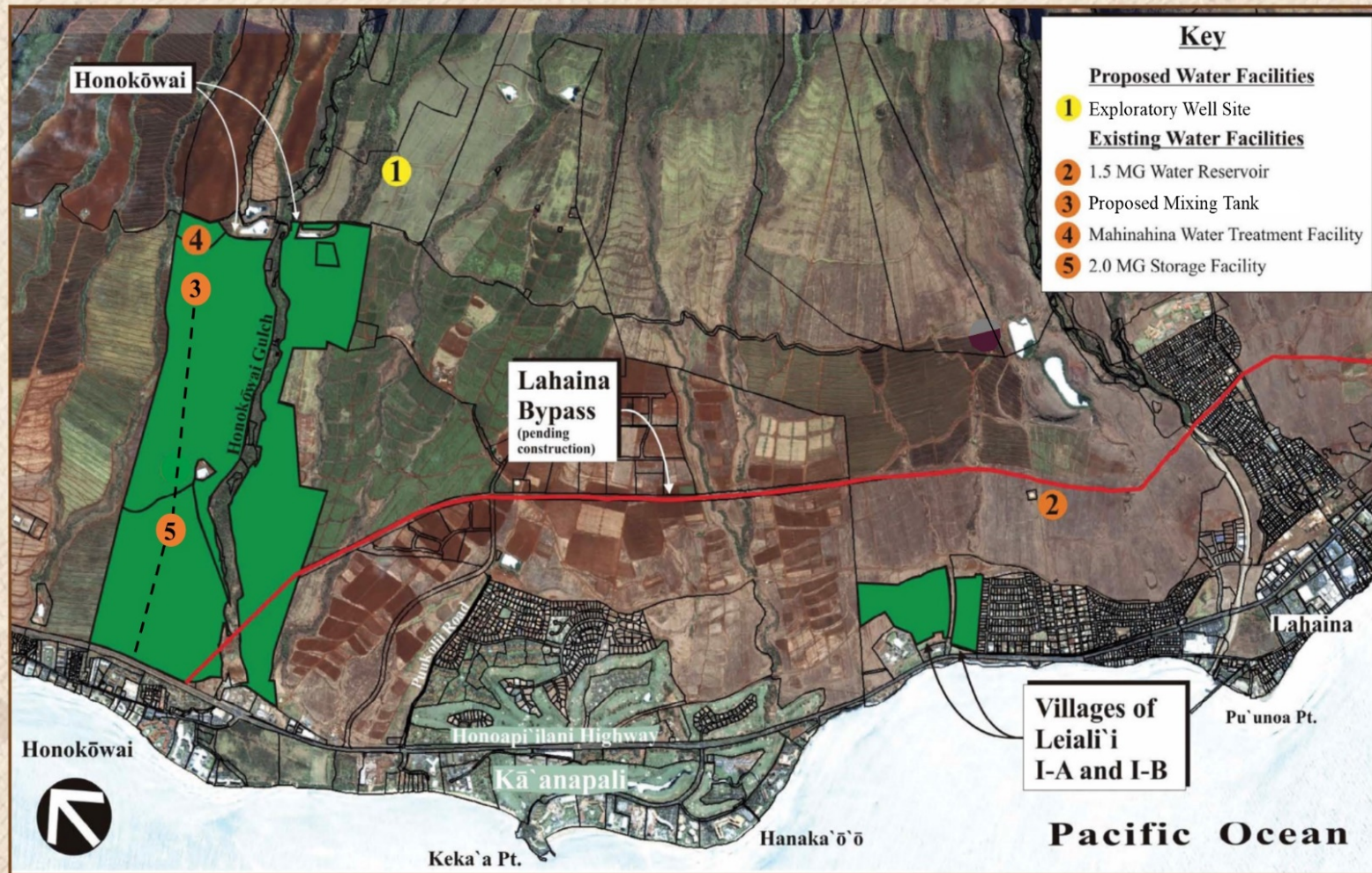
^ Includes \$2,765,000 in FY 18 and \$365,000 in FY 19 requested by homestead leaders.

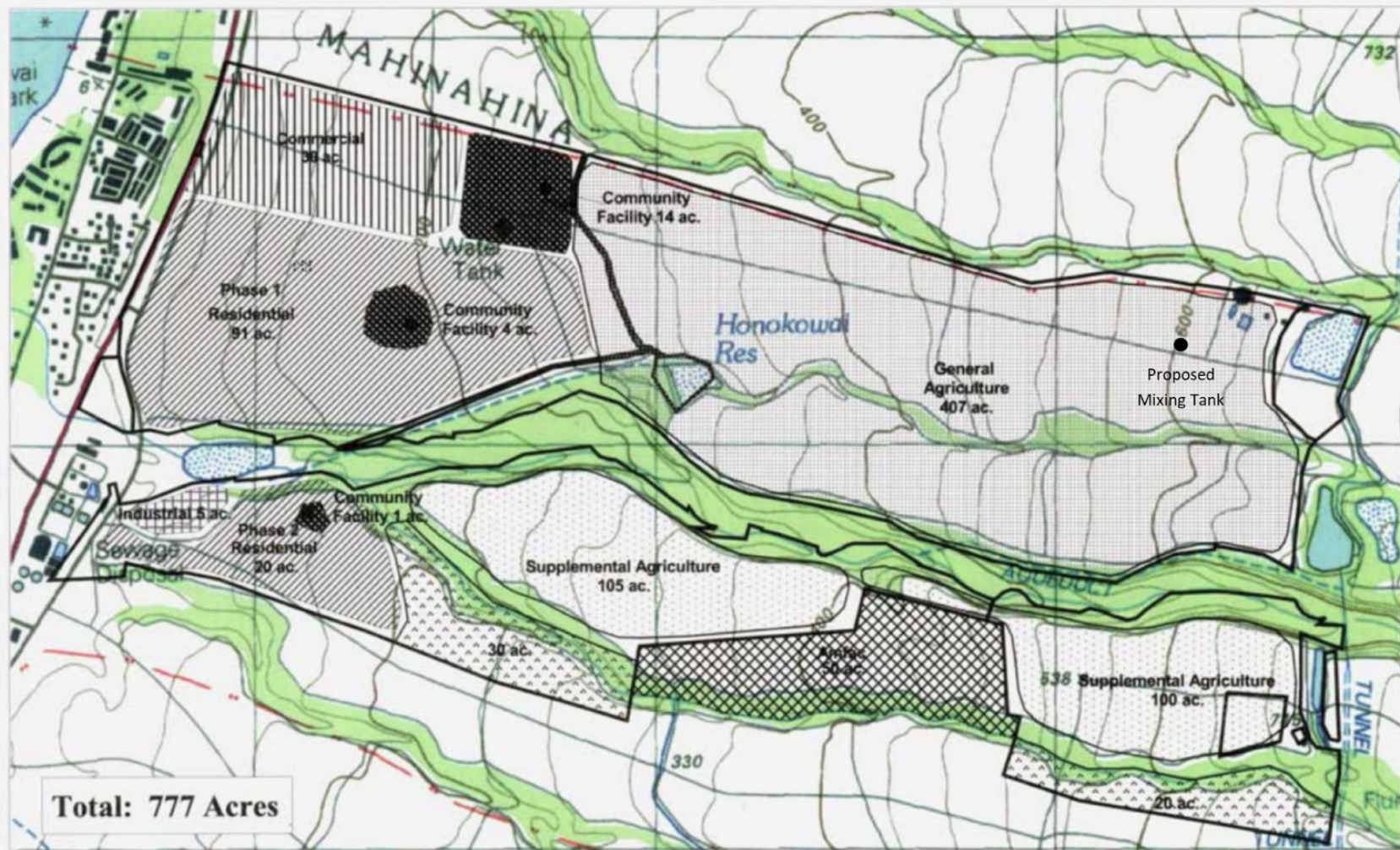


HAWAIIAN HOME LANDS  
HAWAIIAN HOMES COMMISSION  
DEPARTMENT OF HAWAIIAN HOME LANDS

# Land Development Division Update

## Infrastructure - Water





**Total: 777 Acres**

#### Legend

- DHHL Land Boundary
- Proposed Land Exchange Kaanapali Development Corporation
- DHHL

#### Land Use Summary

Land Use	Lot Size	Number of Lots	Approx Acres
Residential (ph.1)	10,000 sf	337	91
Residential (ph.2)	10,000 sf	74	20
General Agriculture			407
Community Use			19
Industrial			5
Commercial Use			30
Supplemental Agriculture 5 ac		15	205
<b>Total</b>		<b>426</b>	<b>777</b>

Figure 5-12  
HONOKOWAI  
Land Use Plan

## MAUI LAND INVENTORY

DEPARTMENT OF HAWAIIAN HOME LANDS



9/9/04



Village I-B  
253 Lots (est.)

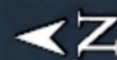
Village  
I-A  
104  
Lots

Lahaina Civic Center

Honoapiʻilani Highway

Leialōʻi Parkway (HHFDC)

Legislative Appropriations  
Parkway Improvements: \$1,400,000 (D)



1000 ft

Google Earth



HAWAIIAN HOME LANDS

HAWAIIAN HOMES COMMISSION  
DEPARTMENT OF HAWAIIAN HOME LANDS

# Planning Office Update

# Native Hawaiian Beneficiaries

## Applicants

**44,708 Statewide**

**20% Maui Applications**

WAIT LIST	MAUI APPS
Residential	3,785
Agriculture	4,643
Pastoral	613
<b>TOTAL</b>	<b>9,041</b>

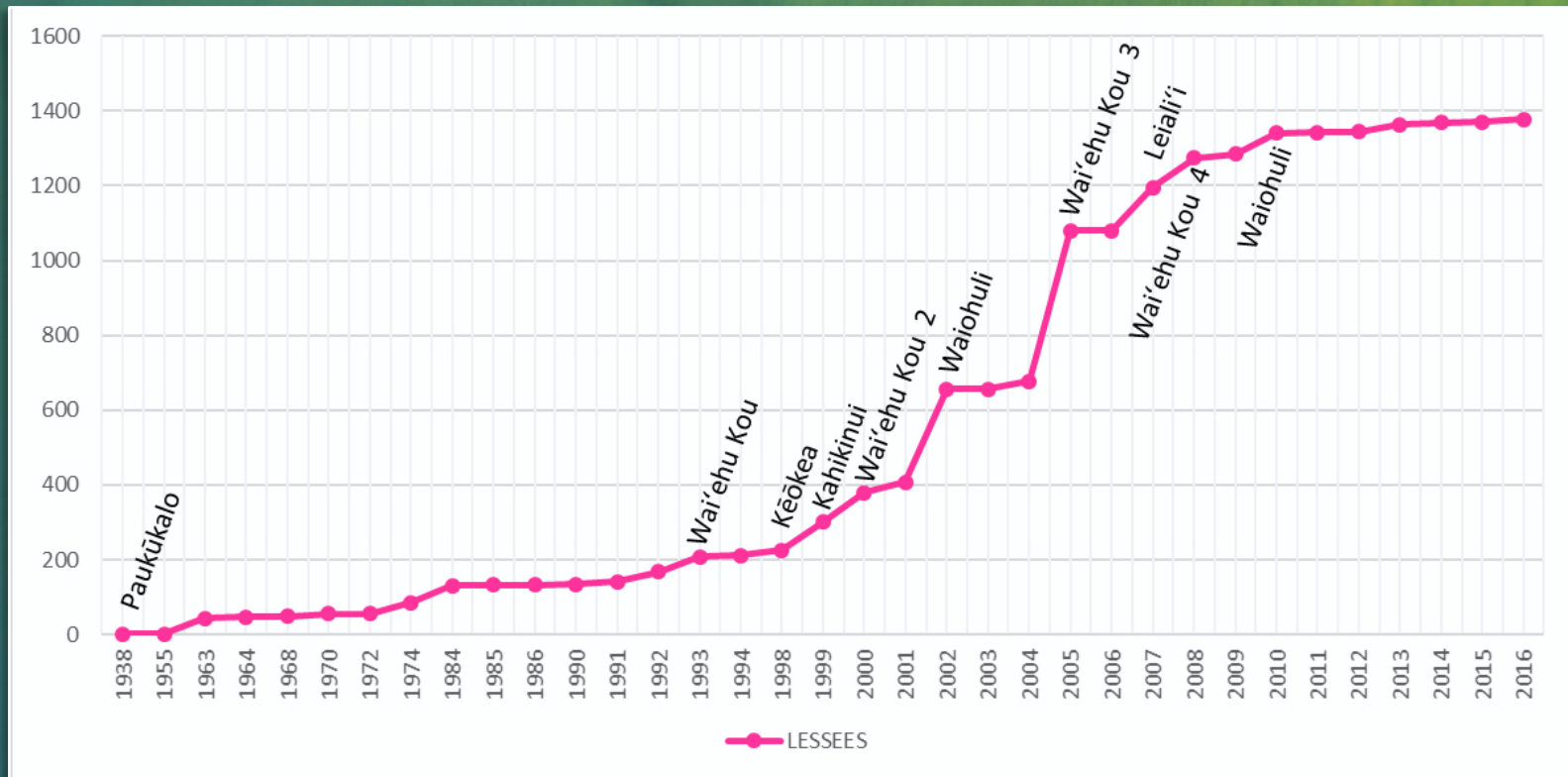
## Lessees

**10,043 Statewide**

**14% Maui Lessees**

MAUI HMSTD	LESSEES
Hikina	32
Kahikinui	75
Kēōkea	65
Leiali'i	104
Paukūkalo	181
Wai'ehu Kou	361
Waiōhuli	608
<b>TOTAL</b>	<b>1,426</b>

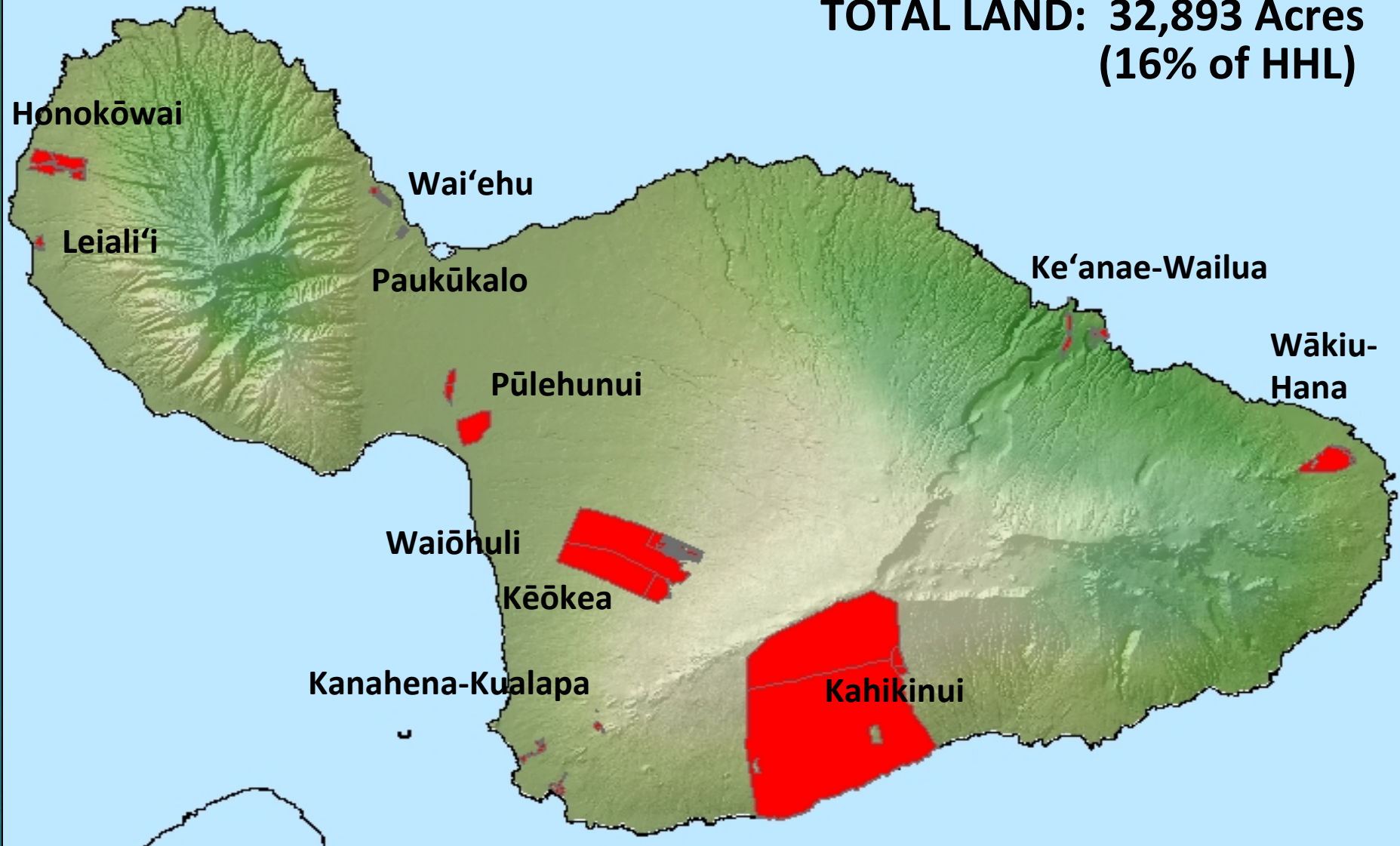
# Maui Homestead Awards Settlement on the Land



- Lease awards on Maui started in 1963
- Late and slow to start.
- A lot lessees are original lessees.

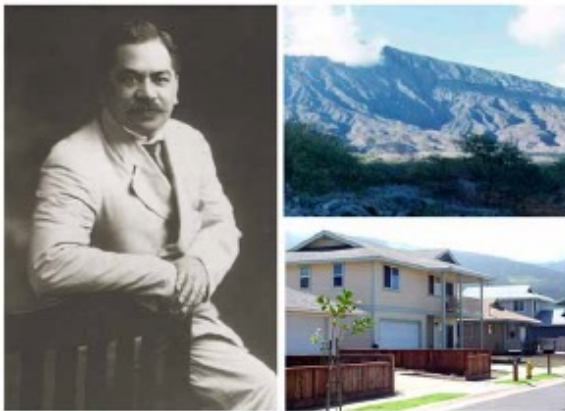
# Maui Land Inventory

**TOTAL LAND: 32,893 Acres  
(16% of HHL)**



# Maui Island Plan

## MAUI ISLAND PLAN



Prepared for:  
The State of Hawai'i  
Department of Hawaiian Home Lands

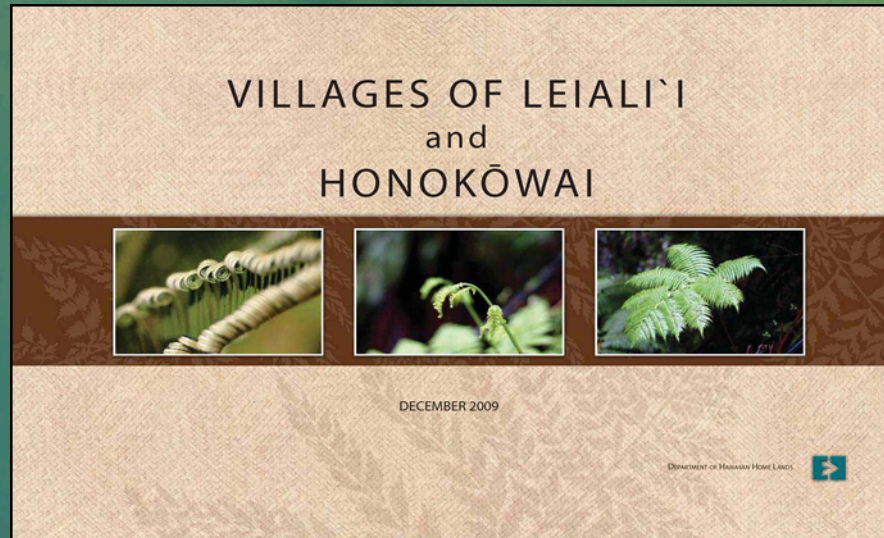
Prepared by:



September 2004

Land Use Designations	Acres	Percent
Subsistence AG	302	1%
Supplemental AG	28	0%
General AG	5,497	17%
Pastoral	775	2%
Residential	2,819	9%
Community Use	217	1%
Commercial	122	0%
Industrial	218	1%
Conservation	7,831	24%
Special District	15,585	49%
<b>TOTAL ACRES</b>	<b>32,000</b>	<b>100%</b>

# Leiali'i – Honokōwai Regional Plan Priority Projects



- **Leiali'i Parkway and Honoapi'ilani Highway Intersection Improvements**
- **Neighborhood Park Development**
- **Preliminary Review of Honokōwai Lands**
- **Water Source Development**

PAUKŪKALO-WAI`EHU KOU



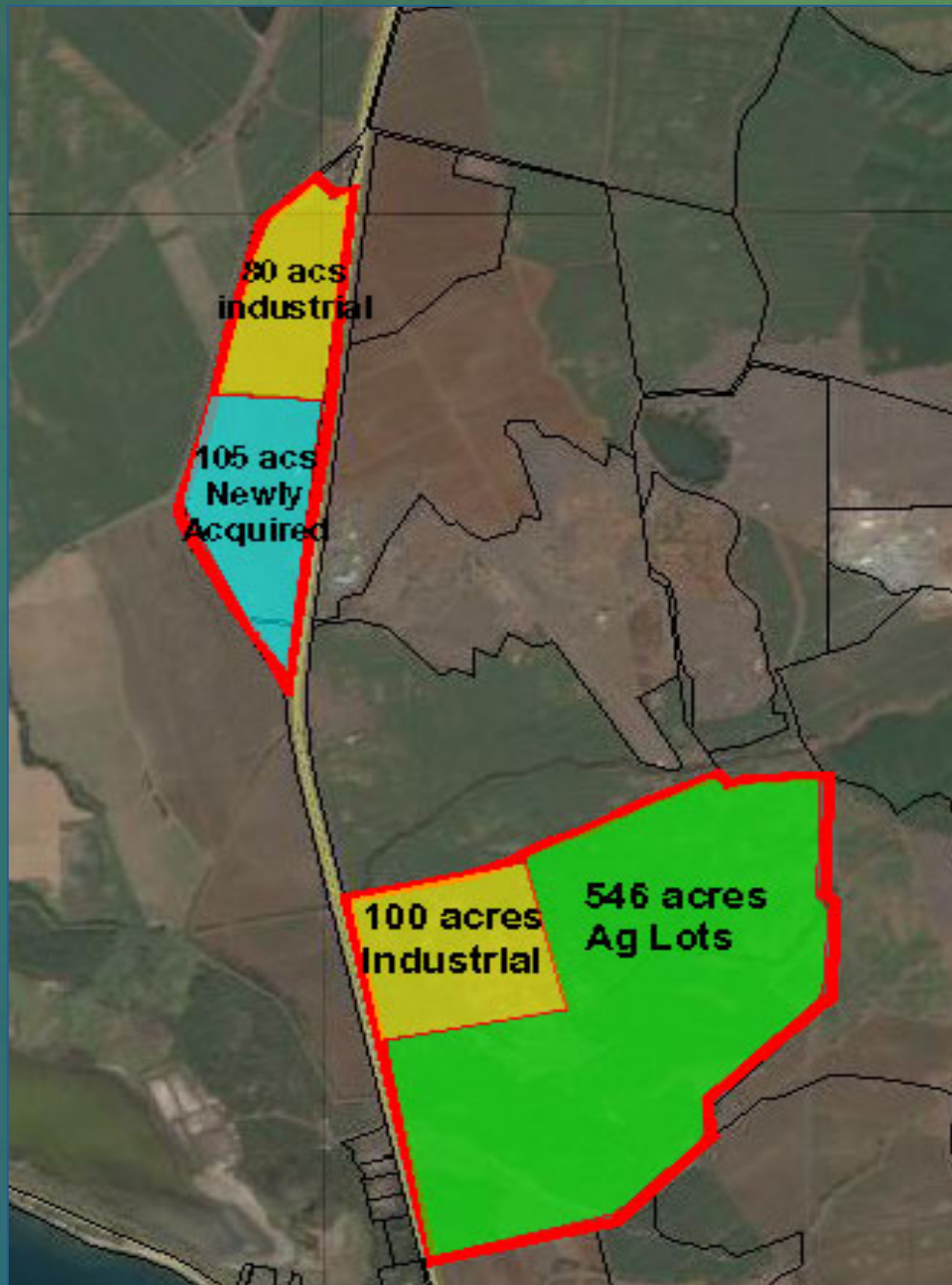
JUNE 2010

DEPARTMENT OF PARKS AND RECREATION

# Paukūkalo-Wai'ehu Kou Priority Projects

- Paukūkalo Armory Site Development
- Investigate Feasibility of Use of Wai'ehu Kou Vacant Lands between Wai'ehu Kou III and IV
- Address Traffic Congestion and Transportation Needs
- Address Drainage Issue at Paukūkalo
- Identify Community Economic Development Uses at Pu'unēnē-Paukūkalo
- Identify Sites for a Potential Community Center at Wai'ehu Kou

# Pūlehunui Master Plan

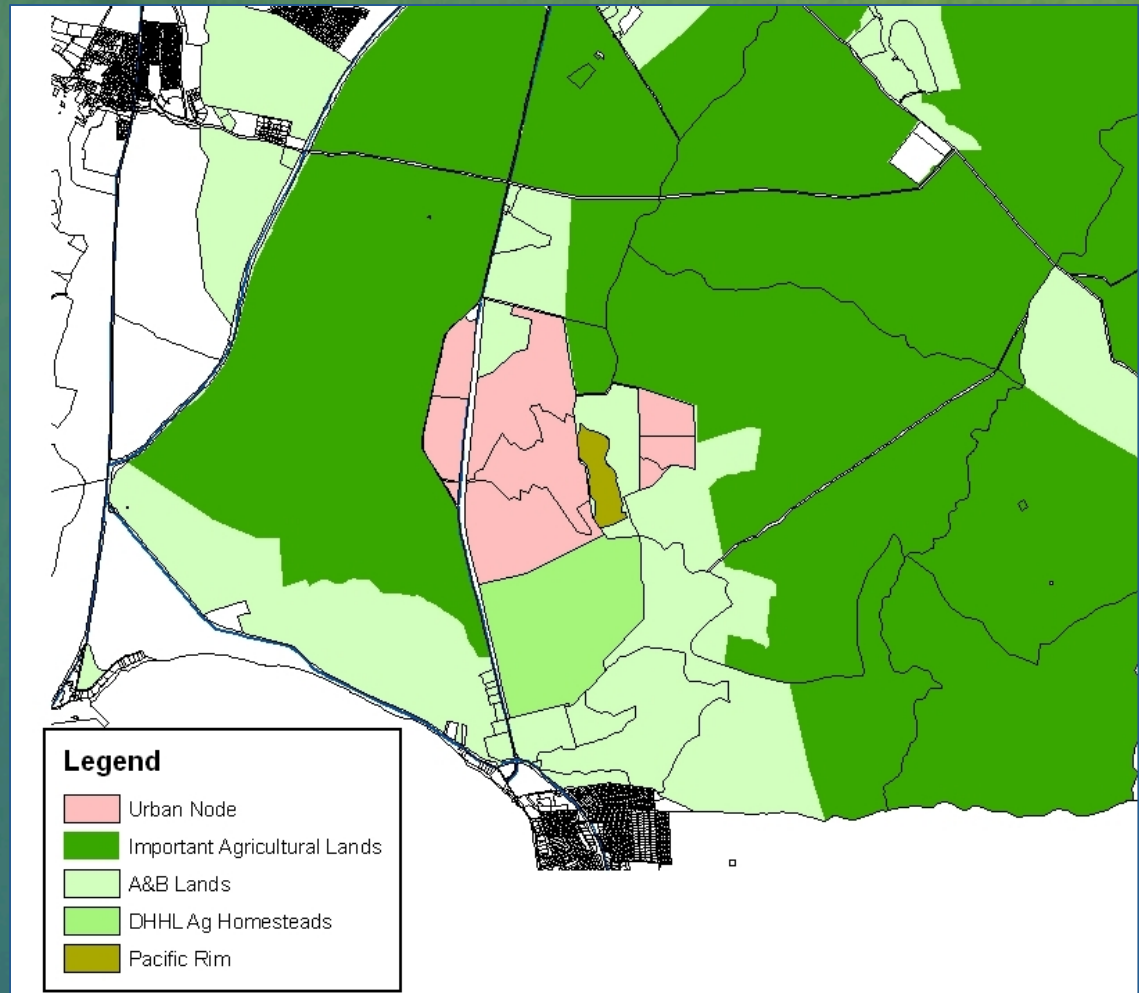


1. Prime strategic location for revenue generation activities.
2. Known as a “dust bowl,” it is inappropriate for residential development
3. Potential Agricultural homestead development

# Master Planning Concept

## GOAL:

To develop an integrated master plan that would coordinate infrastructure development and create an efficient and thoughtfully designed urban node contained by surrounding Important Agriculture Lands.





HAWAIIAN HOME LANDS  
HAWAIIAN HOMES COMMISSION  
DEPARTMENT OF HAWAIIAN HOME LANDS

# Homestead Community Update

# Maui

## Homestead Organizations

- 'Ahahui 'Aina Ho'opulapula o Waiohuli – Sarah Nakihei, Pres.
- Association of Hawaiians for Homestead Lands – Blossom Feiteira, Pres.
- Ka 'Ohana O Kahikinui, Inc. – Ainoa Kaioakamalie, Pres.
- Keokea Homestead Farm Lots Association – Robin Newhouse, Pres
- Paukukalo Hawaiian Homes Community Assoc., Inc. – Rochelle Keahi, Pres.
- Villages of Leiali'i Phase 1-A Association- Rod Paahana, Pres.
- Waiehu Kou Phase 2 Association, Inc – Mark Adams, Pres.
- Waiehu Kou Phase 3 Association Inc. – Roy Oliveira, Pres.
- Waiohuli Hawaiian Homesteaders Association, Inc. – Perry Artates, Pres.
- Waiohuli Undivided Interest Association – Cheryl Moore, VP



HAWAIIAN HOME LANDS  
HAWAIIAN HOMES COMMISSION  
DEPARTMENT OF HAWAIIAN HOME LANDS

# Open House