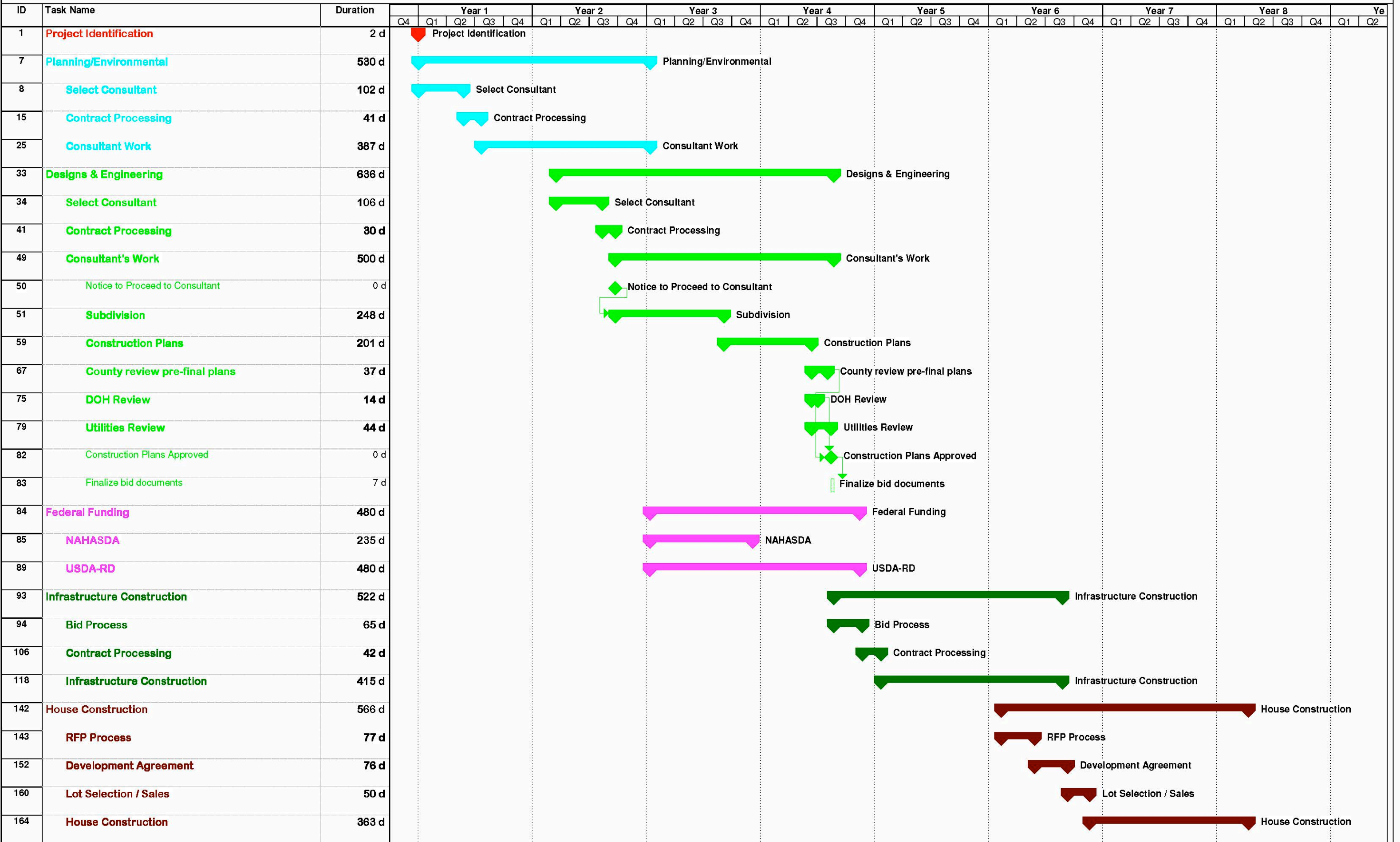


Hawaiian Homes Commission

Development Pipeline

September 2017

TYPICAL DEVELOPMENT PROCESS



COMPLETED LOTS			ANTICIPATED COMPLETION (SUBJECT TO FUNDING)							TOTAL NEW LOTS	
FY15	FY16	FY17	FY18	FY19	FY20	FY21	FY22	FY23	RES	AGR/PAS	
Kauai											
* Piilani Mai Ke Kai Ph 2	51										
* Piilani Mai Ke Kai Ph 3							46		46		
* Hanapepe Residential, Ph 2							60		60		
Oahu											
* East Kapolei IIB		160									
* East Kapolei IIC					130				130		
* East Kapolei IIA (TOD)							157		157		
Waianae (Freitas)			8						8		
Maili - Ulu Ke Kukui				80							
Maili - VOA Ph1							72		72		
* Waimanalo Res (Kakaina)			45								
Waimanalo Ag (Waikupahana)					15					15	
Waimanalo Res & Agr (Wong)							175		125	50	
Maui											
* Keokea Waiohuli Ph 1-A			45								
* Keokea Waiohuli Ph 1-B					49				49		
* Keokea Waiohuli Ph 2							76		76		
* Leiallii - Ph 1B							253		253		
* Honokowai Subs Ag Ph 1								50		50	
Molokai											
Hoolehua-Pala'au					12					12	
Naiwa						58				58	
Hawaii Island											
* Laiopua Village 4 Ph 1 (Akau)		118									
* Laiopua Village 4 Ph 2 (Hema)					101				101		
Panaewa Lot 185 Subdivision			16							16	
Honomu				100						100	
Kaumana Lot Rehab					3				3		
Kau Water / Kamaoa Lots						50				50	
TOTALS											
	51	278	90	24	180	310	108	839	50		
GRAND TOTALS											
			419					1,511			

Leg FY18: \$1,000,000

Designs encumbered
Developer financing
Subdivide only
Re-hab existing Structures
Leg FY18: \$800,000

Leg FY18: \$1,300,000

Leg FY18: \$1,200,000
Leg FY18: \$1,000,000
Leg FY18: \$1,400,000

Leg FY18: \$1,500,000
Leg FY19: \$1,500,000

Designs encumbered
Designs encumbered

Leg FY18: \$500,000
Leg FY18: \$1,500,000

* Island Plan priority projects/regions .

Lots Developed - considered done when the sitework contract is completed. (minor punchlist to be completed.)

ISLAND OF KAUAI

PI'ILANI MAI KE KAI

HANAPEPE

Pi'ilani Mai Ke Kai Anahola, Kaua'i



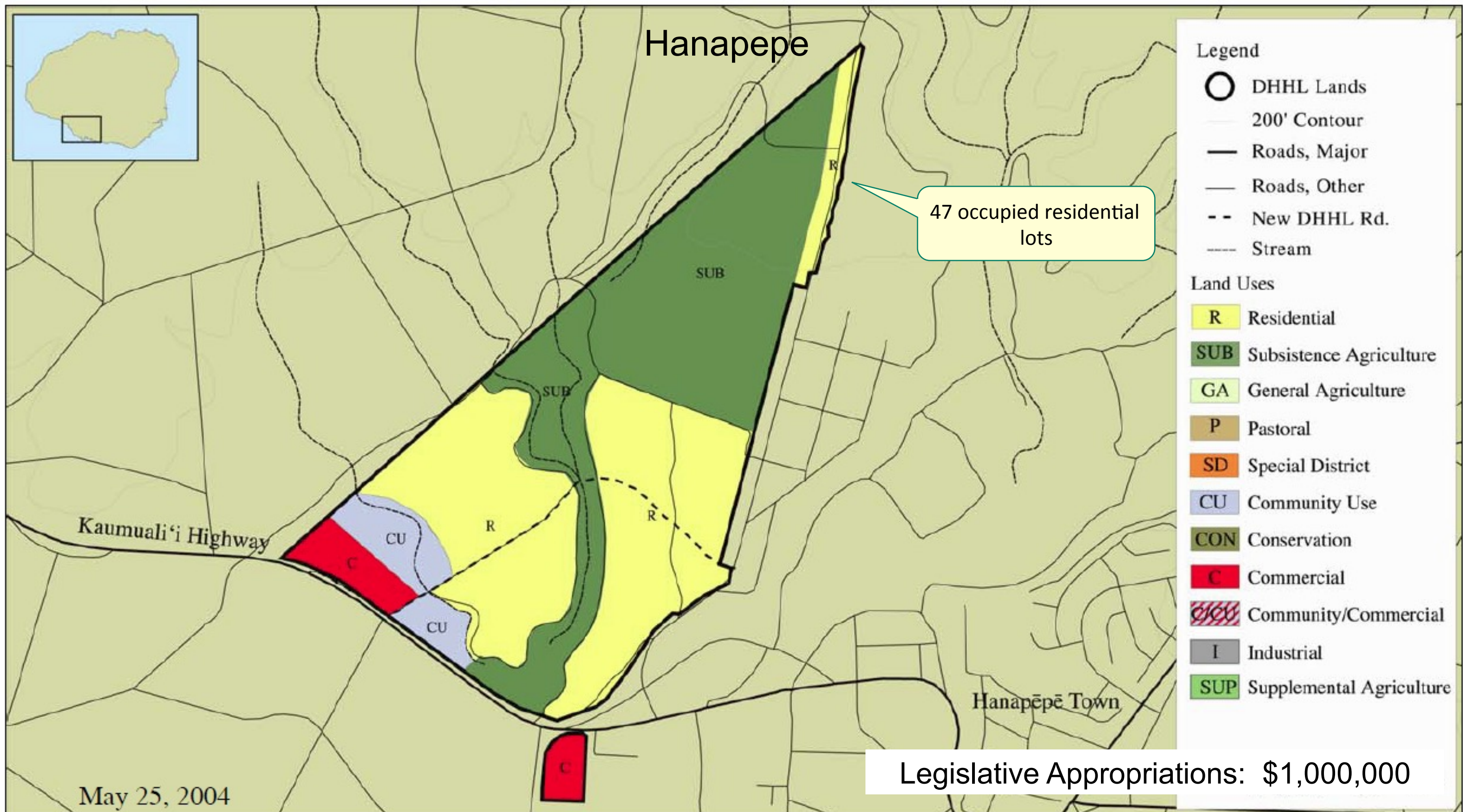
Phase 1
80 Lots

Phase 2
51 Lots

Phase 3
46 Lots

Kukuihale Road

Kuhio Highway



R = 168 acres; 482 lots @ 10,000 sf
 SUB = 158 acres; 13 lots @ 3 acres & 36 @ 2 acres

CU = 22 acres; 7 acres along Hwy & 15 acres behind Commercial
 C = 17 acres; 6 acres makai & 11 acres mauka

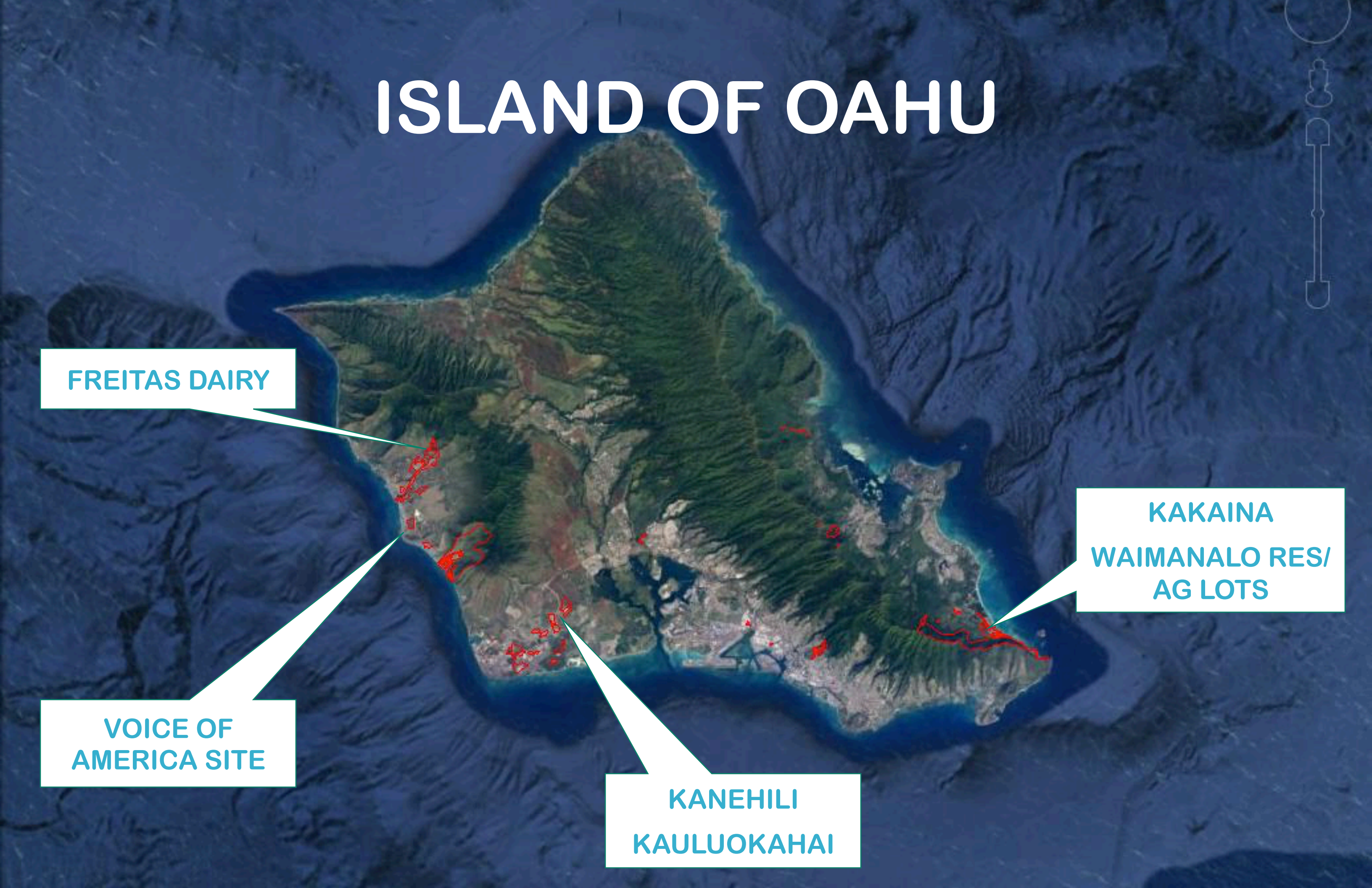
ISLAND OF OAHU

FREITAS DAIRY

VOICE OF
AMERICA SITE

KANEHILI
KAULUOKAHAI

KAKAINA
WAIMANALO RES/
AG LOTS



University of Hawaii
West Oahu

Kualaka'i Parkway

Ho'opili

Incr.II

Incr II-B

Incr II-A


Ka'uluokaha'i

Kānehili

Hale
Kalaniana'ōle

Kapolei Parkway


Ka Makana Ali'i



DEPARTMENT OF HAWAIIAN HOME LANDS

June 2017



Kaupuni
Neighborhood
Park

Freitas Dairy Residential Lots (32 lots)

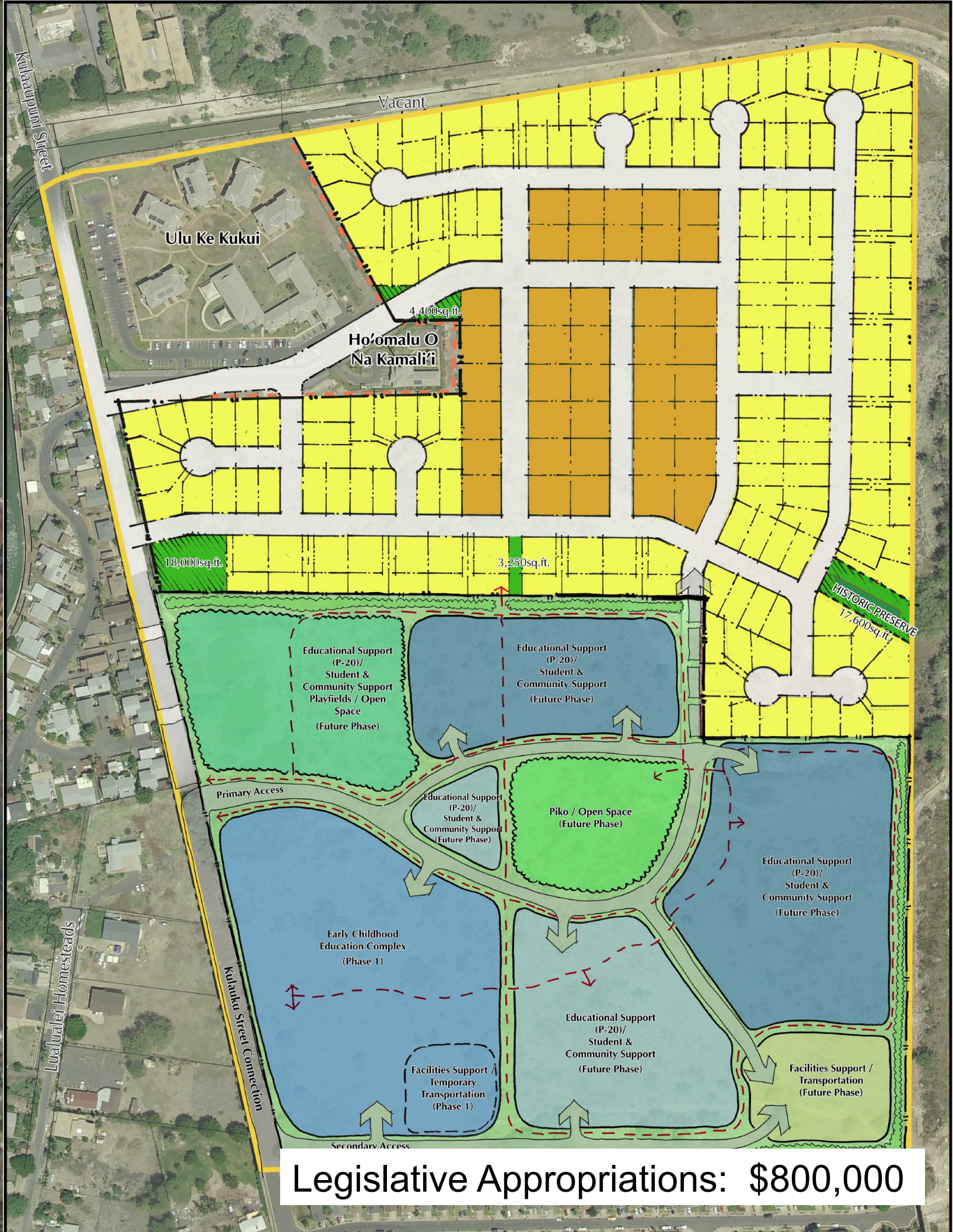
Waianae
Residence Lots

Freitas Dairy Agricultural
Lots (21 lots)

Freitas Dairy, Waianae
Eight new residential lots



Former Voice of America Site



Legislative Appropriations: \$800,000

DHHL Waimanalo Projects

Kumuhau Street

**Kumuhau
Subdivision**
45 Turn-key
7 Self-help
52 Total

Kalanianaʻole Highway

Mekia Street

Poalima Street

Hihimanu Street

Kakaina Street

Kakaina Subdivision
Infrastructure for 45 lots
construction completed

Waikupahana
Agricultural Lots
±10 acres

Reservoir

TMK 4-1-26: 04 (DLNR)

TMK 4-1-08: 80 (DLNR)

LOT B
52.620 acres
(DLNR convey to DHHL;
DHHL lease to Wong farm)

Wong Farm
TMK 4-1-08: 79
(DLNR convey to DHHL)
51.927 acres

DHHL
TMK 4-1-08: 02

Waimanalo Beach
Park

Blanco Pope
Elementary

Waimanalo/Wailea Post
Office

Hulu St

Manana St

Olulu St

Alaihi St

Puuone St

Hoopulapula St

Kulaiwi St

Wailea St

Kulaiwi St

Lupe St

Ilauihoie St

Kauholokahiki St

Kekumu Pl

Kaiaia St

Nakini St

Polia St

Hulu St

Nakini Pl

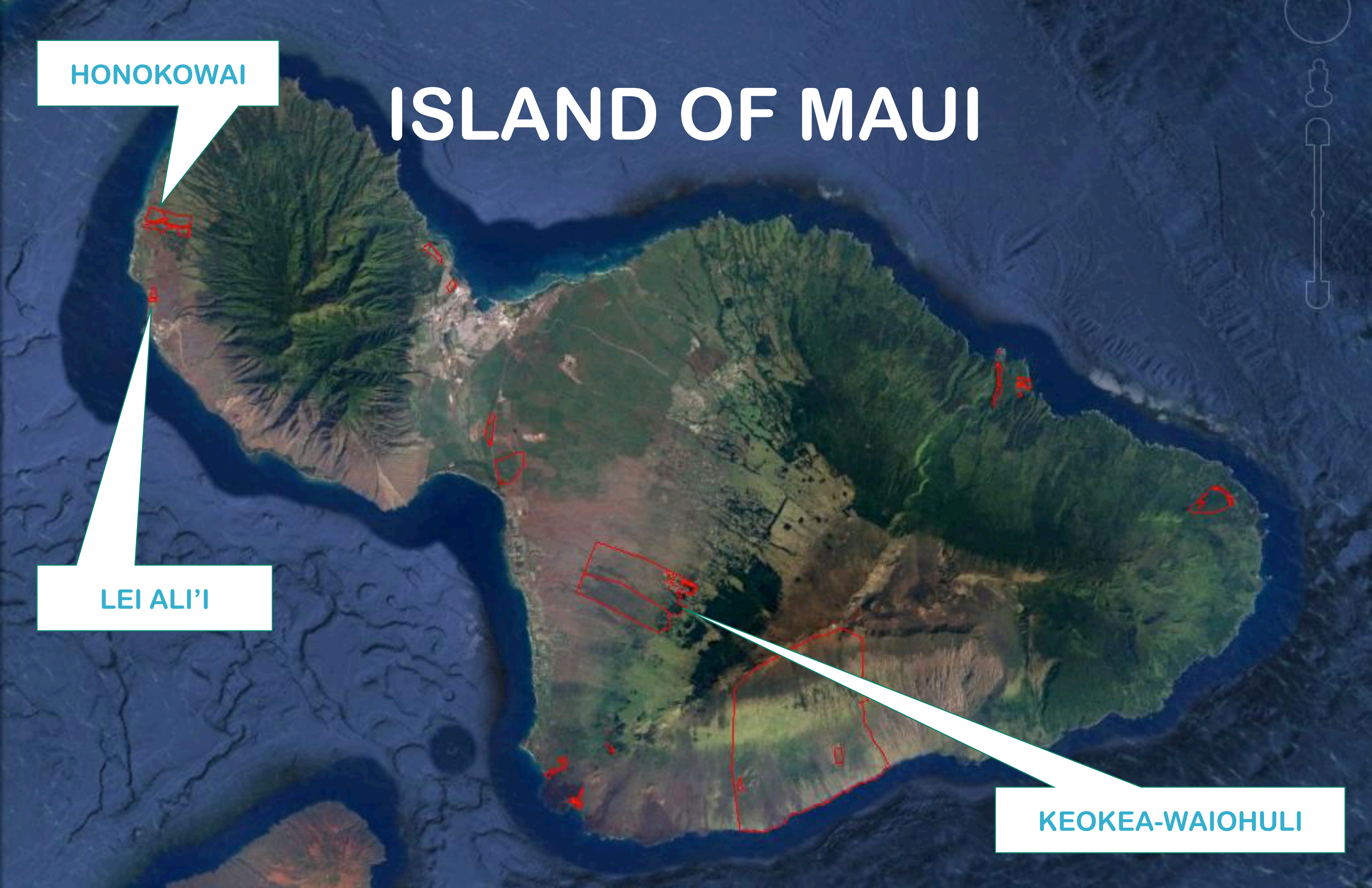


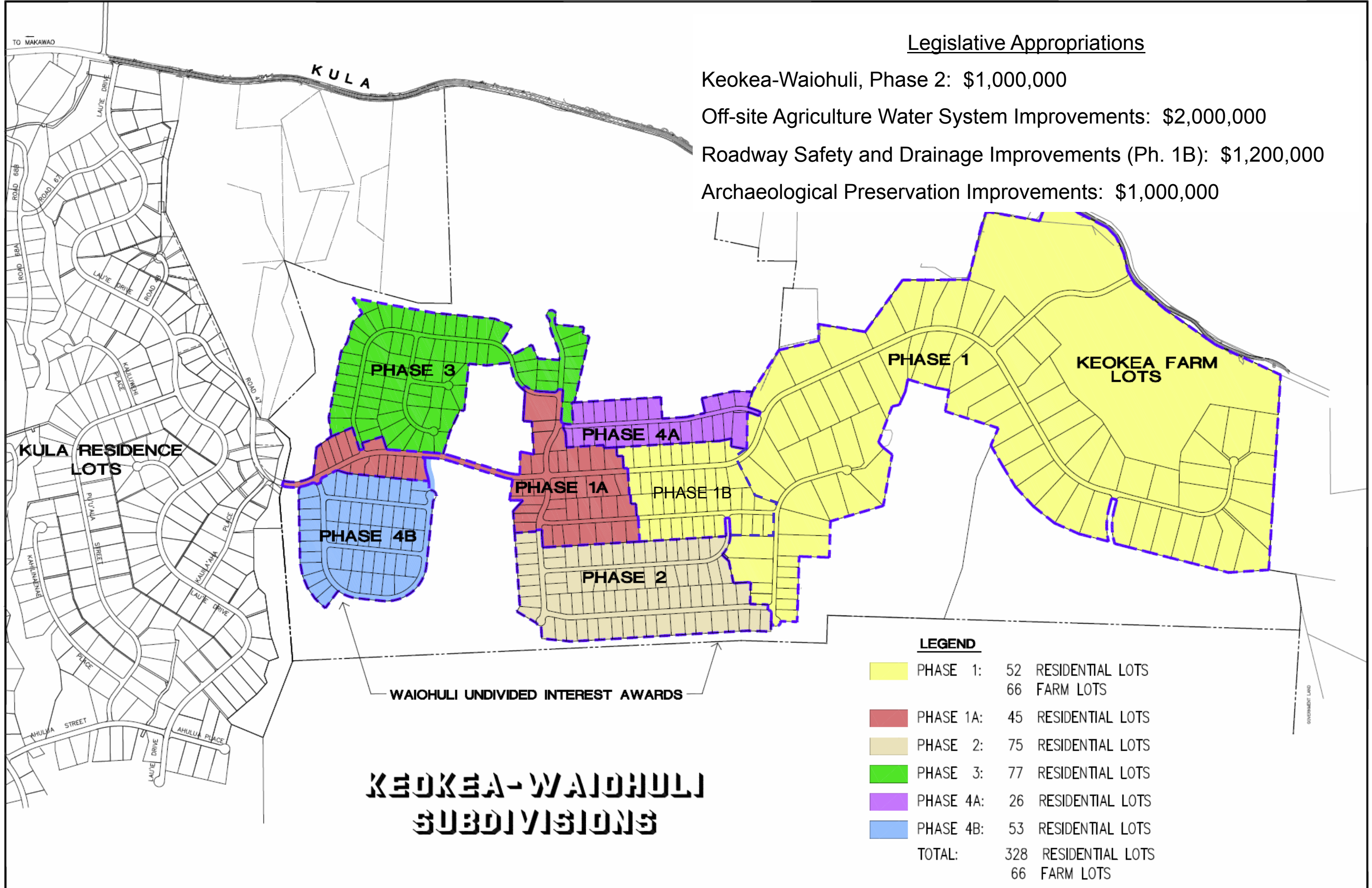
HONOKOWAI

ISLAND OF MAUI

LEI ALI'I

KEOKEA-WAIOHULI





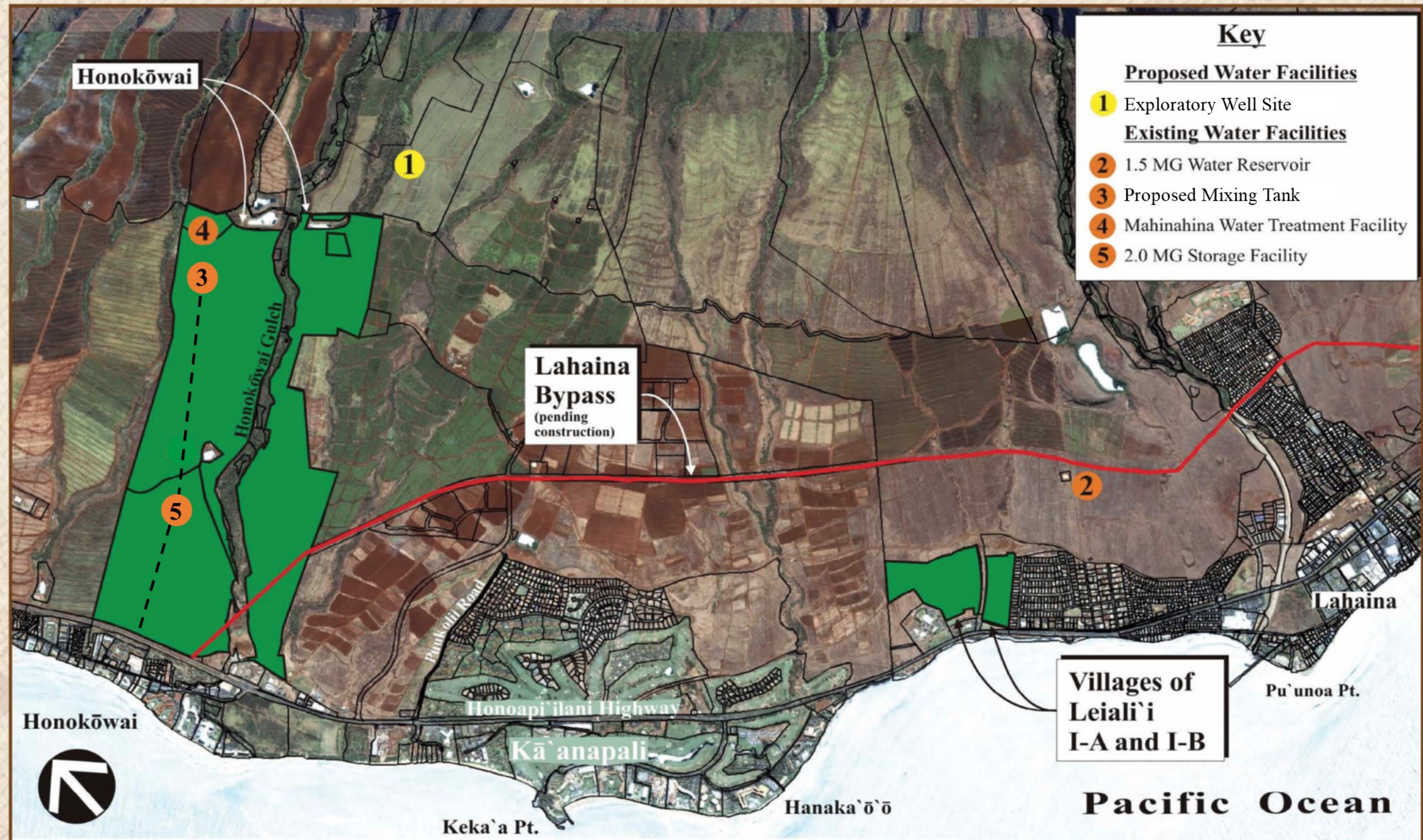
Legislative Appropriations

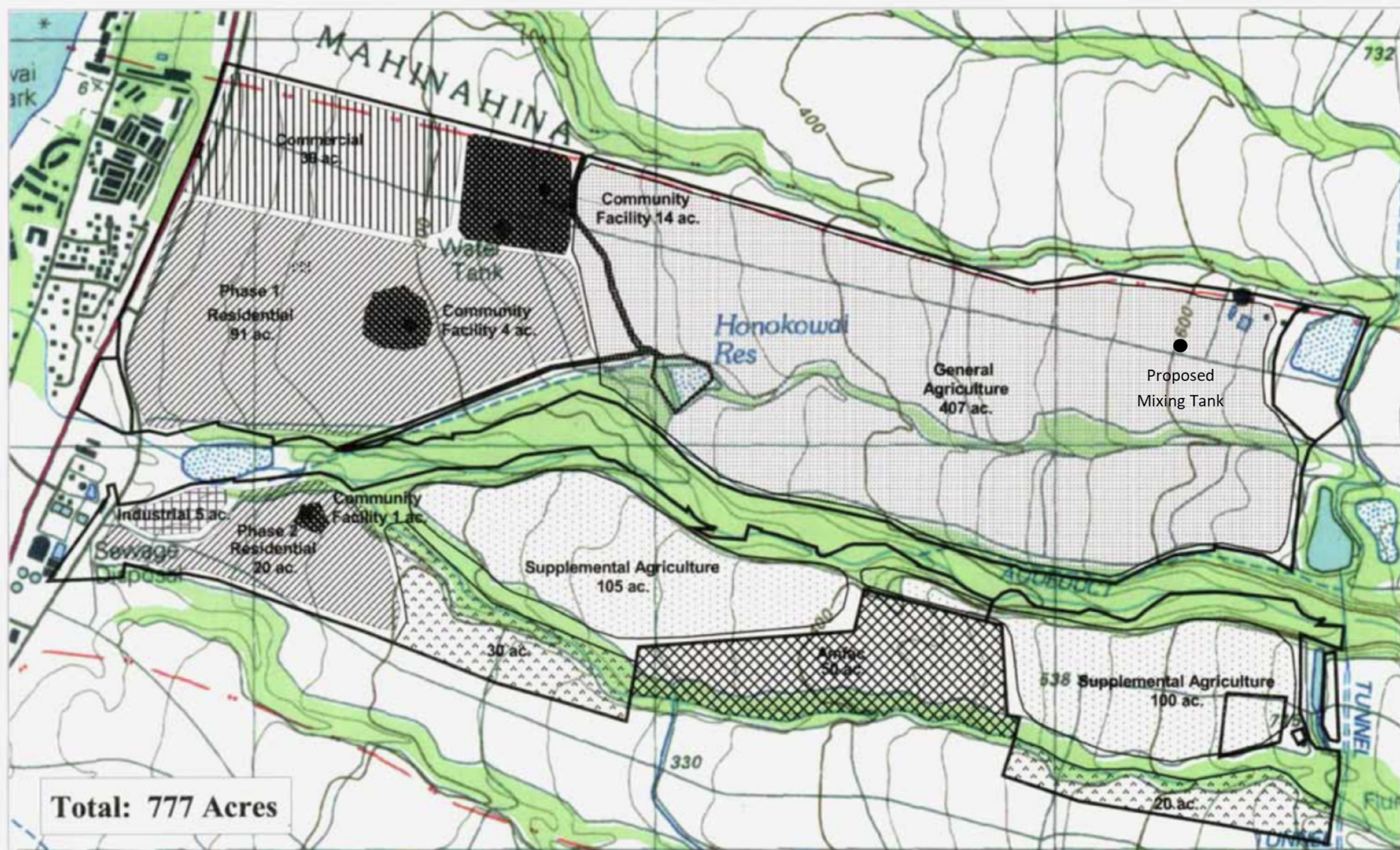
- Keokea-Waiohuli, Phase 2: \$1,000,000
- Off-site Agriculture Water System Improvements: \$2,000,000
- Roadway Safety and Drainage Improvements (Ph. 1B): \$1,200,000
- Archaeological Preservation Improvements: \$1,000,000

LEGEND

PHASE 1:	52	RESIDENTIAL LOTS
	66	FARM LOTS
PHASE 1A:	45	RESIDENTIAL LOTS
PHASE 2:	75	RESIDENTIAL LOTS
PHASE 3:	77	RESIDENTIAL LOTS
PHASE 4A:	26	RESIDENTIAL LOTS
PHASE 4B:	53	RESIDENTIAL LOTS
TOTAL:	328	RESIDENTIAL LOTS
	66	FARM LOTS

Infrastructure - Water





Legend

- DHHL Land Boundary
- Proposed Land Exchange
- Kaanapali Development Corporation
- DHHL

Land Use Summary

Land Use	Lot Size	Number of Lots	Approx Acres
Residential (ph.1)	10,000 sf	337	91
Residential (ph.2)	10,000 sf	74	20
General Agriculture			407
Community Use			19
Industrial			5
Commercial Use			30
Supplemental Agriculture 5 ac		15	205
Total		426	777

Figure 5-12
HONOKŌWAI
Land Use Plan

MAUI LAND INVENTORY

DEPARTMENT OF HAWAIIAN HOME LANDS



9/9/04

Village I-B
253 Lots (est.)

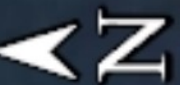
Village
I-A
104
Lots

Leialii Parkway (HHFDC)

Lahaina Civic Center

Honoapi'ilani Highway

Legislative Appropriations
Parkway Improvements: \$1,400,000 (D)

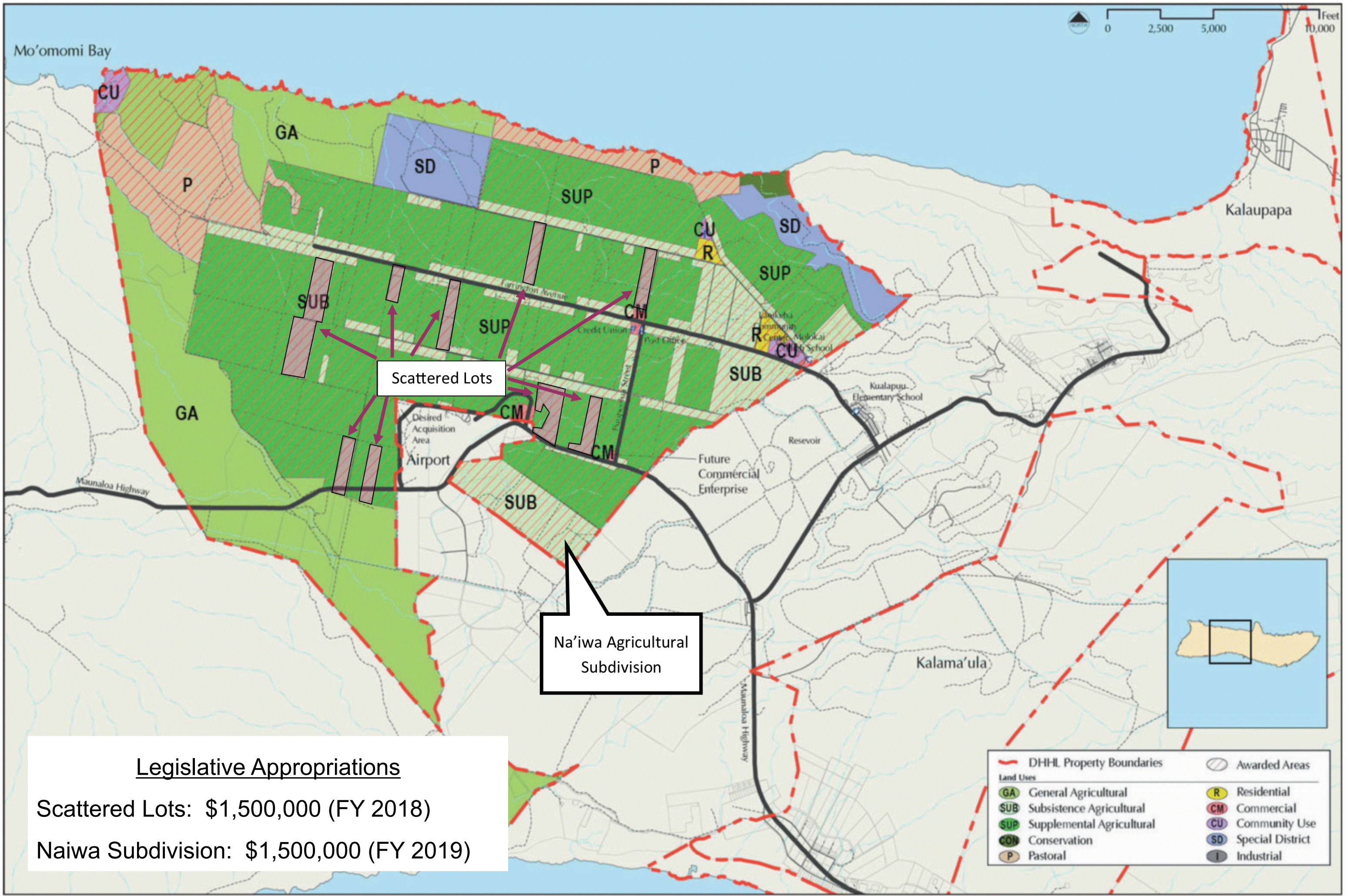


1000 ft

ISLAND OF MOLOKAI

A satellite map of the Island of Molokai, Hawaii. The island is elongated and features a central mountain range. Red outlines are drawn on the map to indicate specific land parcels. A large, irregularly shaped area on the western side of the island is outlined in red and contains a grid of smaller red rectangles, representing scattered lots. Another large, irregularly shaped area on the eastern side is also outlined in red. Several smaller, rectangular parcels are outlined in red along the southern coast. A white callout box with a pointer is located in the lower-left corner, containing text about the highlighted areas. In the bottom right corner, there is a small inset map showing the location of Molokai within the Hawaiian Islands chain.

HOOLEHUA SCATTERED LOTS
NAIWA AGRICULTURAL LOTS



Legislative Appropriations

Scattered Lots: \$1,500,000 (FY 2018)

Naiwa Subdivision: \$1,500,000 (FY 2019)

ISLAND OF HAWAII

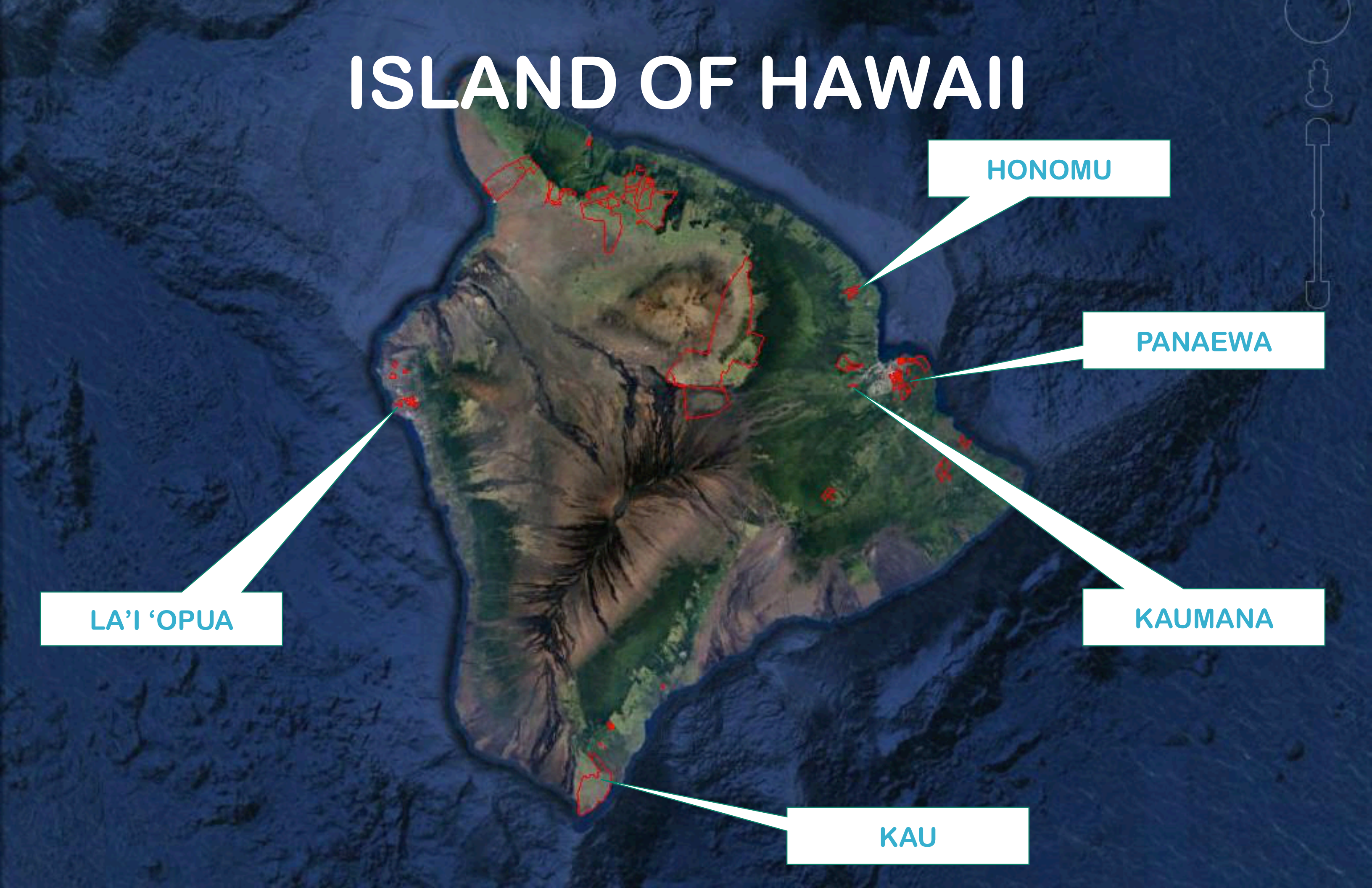
HONOMU

PANAEWA

LA'I 'OPUA

KAUMANA

KAU



Villages of La'i 'Ōpua Kealakehe, Hawai'i



Manawalea Street

Uhiuhi Preserve

Kaniohale (Village 3)
225 lots

Park

Village 4 - Hema
101 lots

Village 4 - Akau
118 lots

Keanalehu Drive

Village 5
116 lots

Kealakehe Parkway

Aupaka Preserve

Kealakehe High School

Ane Keohokalole Highway

PANAEWA SUBSISTANCE AGRICULTURAL LOTS

LOT 185: 16 HALF-ACRE LOTS

Kanoelehua Avenue

Kinau Street

Mahiai Street

Drainage Channel

Waihanohua Way

Waihanohua Way

Waihanohua Way

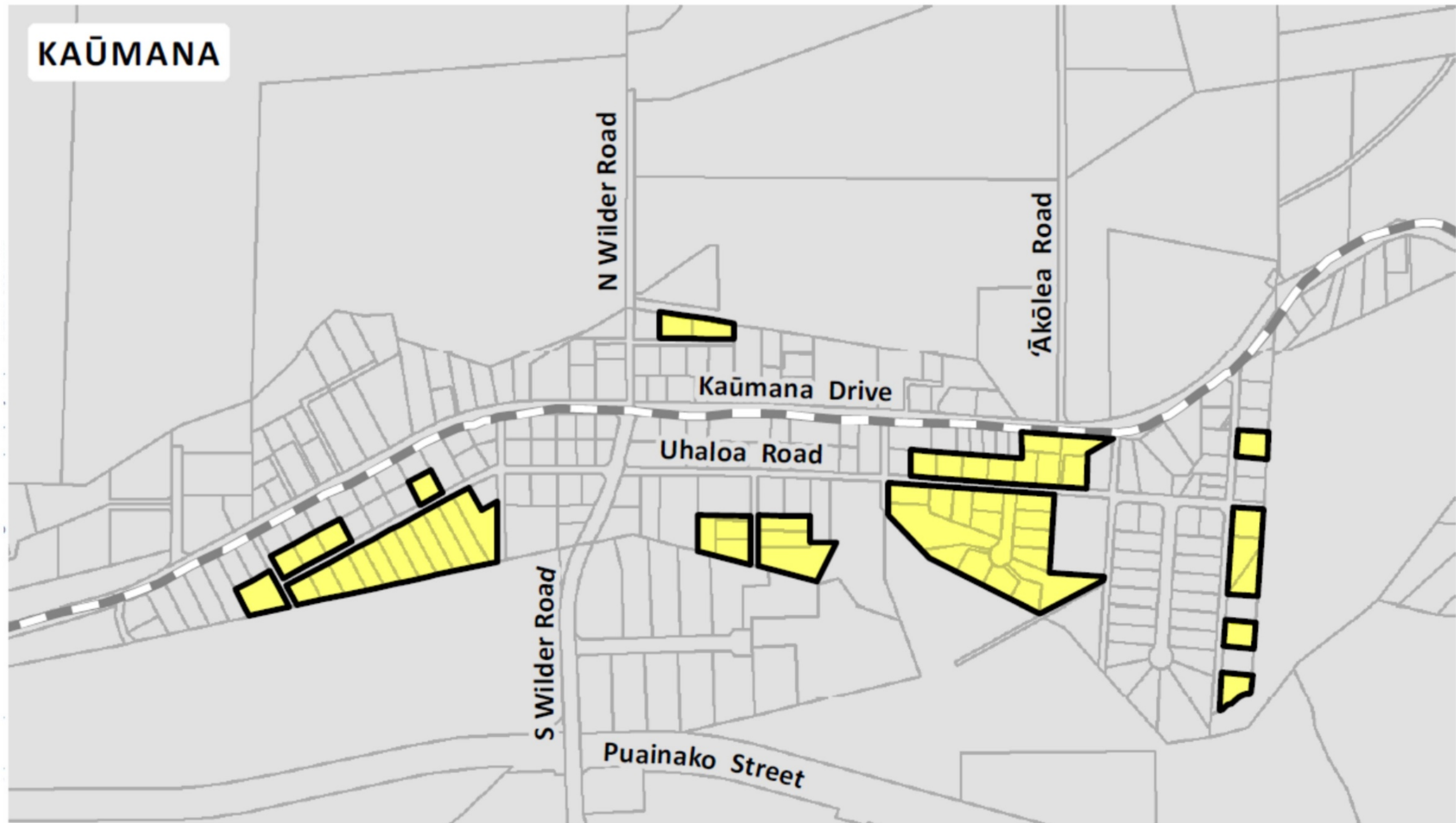
Honomu Agricultural Lots




Akaka Falls



Honomu

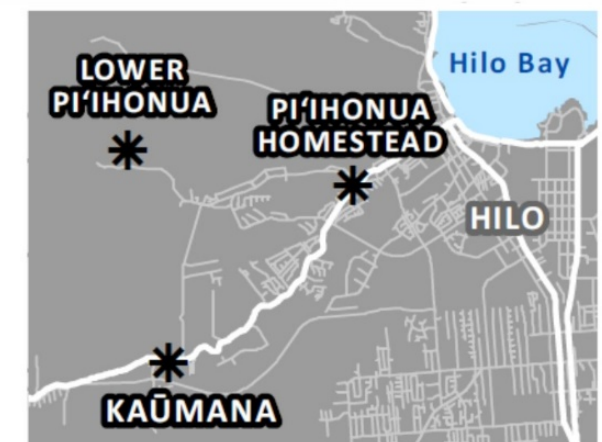


LEGEND

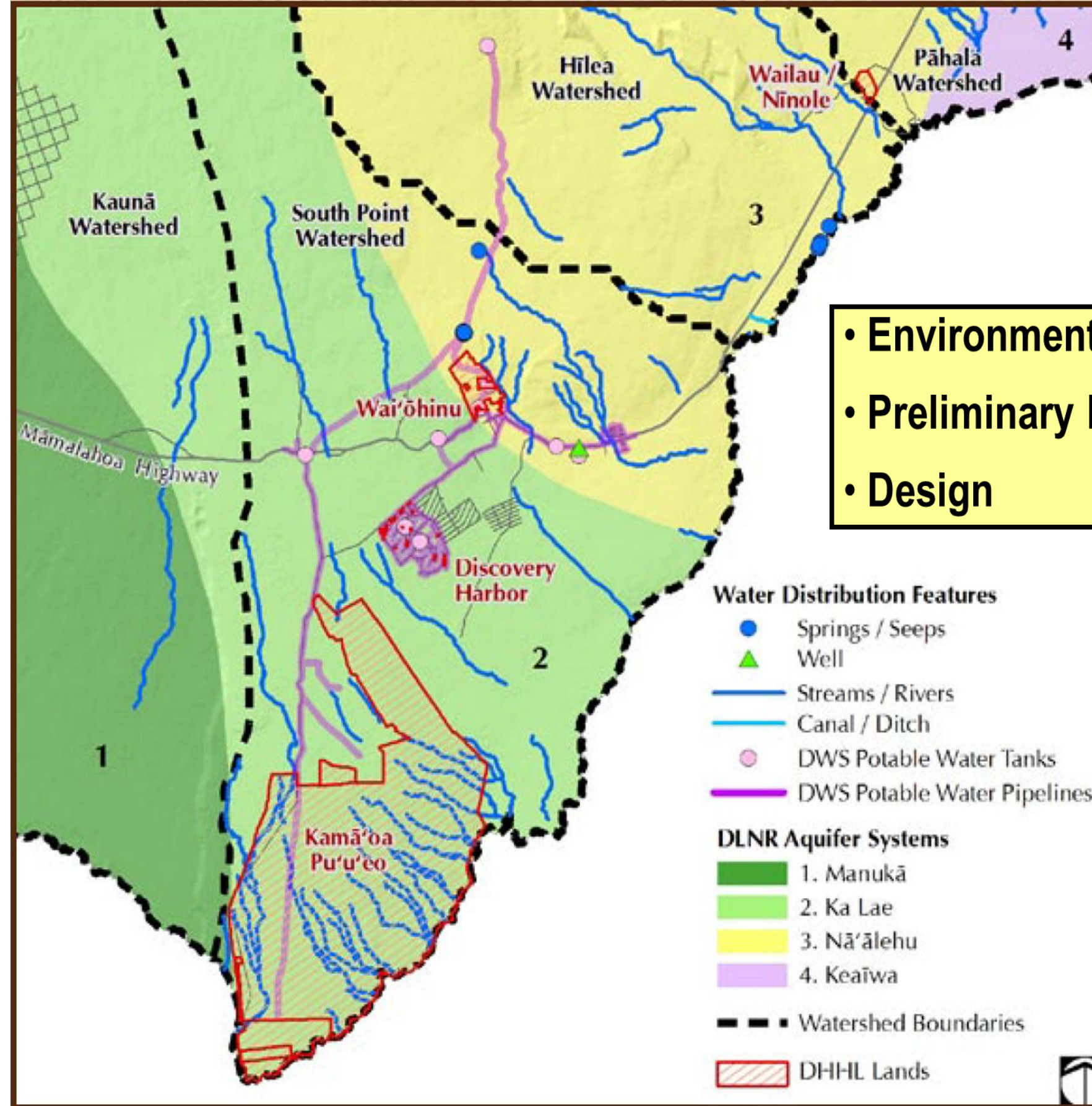
 Planning Area

Land Use Designation

 Residential



Legislative Appropriations: \$500,000



- Environmental Review Record
- Preliminary Engineering Report
- Design

Kau Water System

Legislative Appropriations: \$1,500,000