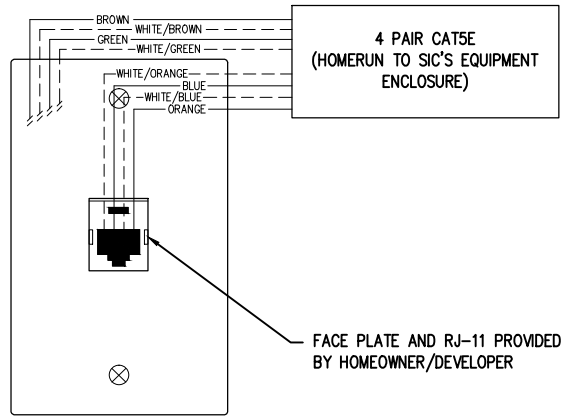
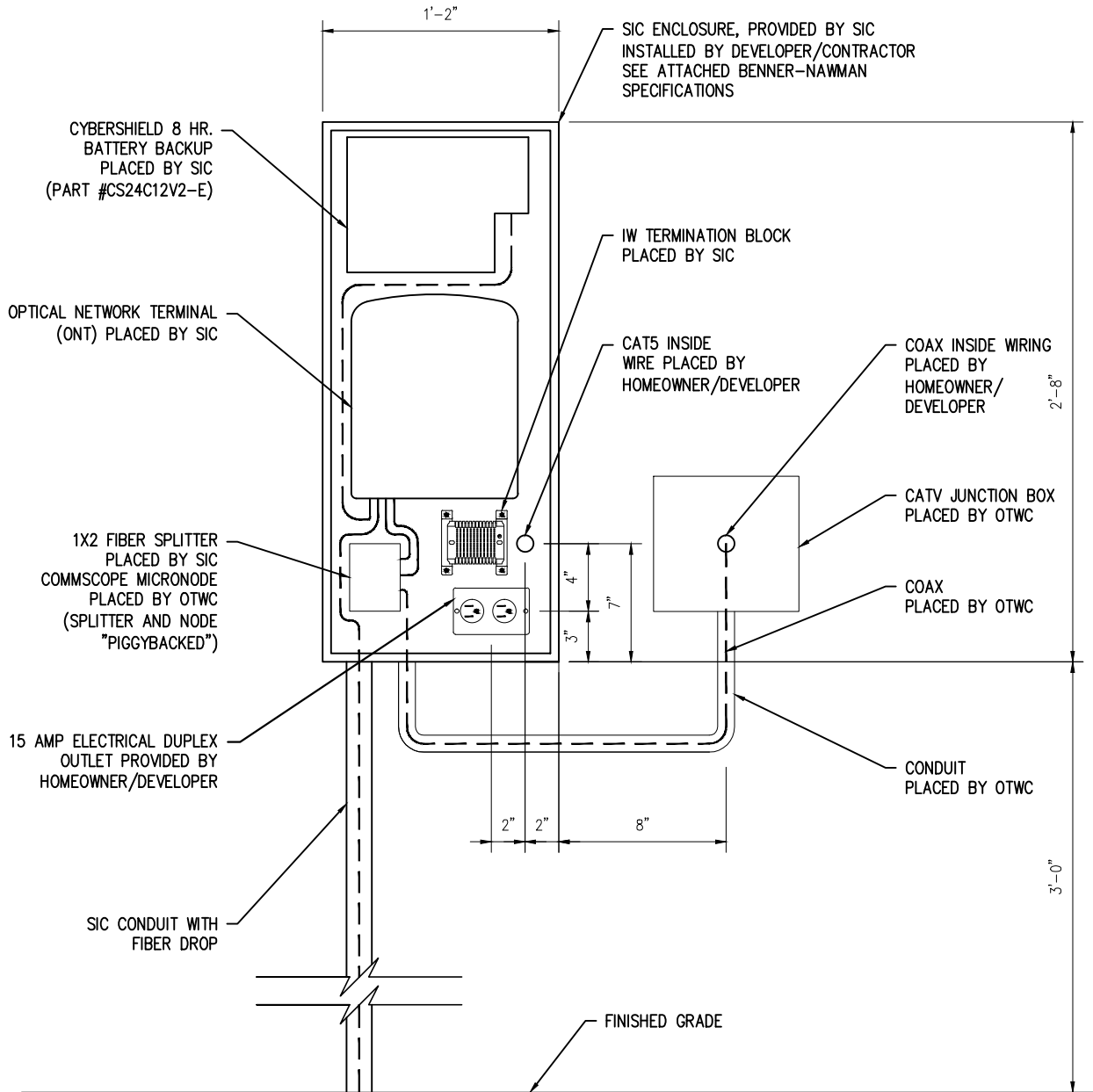


STANDARD NOTES FOR TELEPHONE INSTALLATION

1. THE SANDWICH ISLES COMMUNICATIONS (SIC) EQUIPMENT ENCLOSURE SHALL BE LOCATED A MINIMUM OF TWO FEET FROM THE ELECTRICAL METER. HOMEOWNER/DEVELOPER MUST ENSURE SUFFICIENT CLEAR SPACE IS ALLOWED FOR SIC'S ENCLOSURE.
2. THE HOMEOWNER/DEVELOPER IS RESPONSIBLE FOR THE INSTALLATION OF THE TELEPHONE RJ-11 JACKS AND WIRING WITHIN THE HOUSE. INSIDE WIRE (IW) SHALL BE 4-PAIR, CATEGORY 5 WIRE, HOMERUN FROM EACH JACK TO THE SIC ENCLOSURE. LEAVE THREE FEET OF SLACK MINIMUM AT THE SIC ENCLOSURE FOR TERMINATION. THE HOMEOWNER/DEVELOPER IS RESPONSIBLE FOR INSTALLATION OF CATV CABLE WITHIN THE HOUSE. FOR CATV SPECIFICATIONS, CONTACT OCEANIC TIME WARNER CABLE. LEAVE AT LEAST FOUR FEET OF SLACK AT THE CATV JUNCTION BOX.
3. THE HOMEOWNER/DEVELOPER SHALL PROVIDE A 15 AMP CIRCUIT, ELECTRICAL WIRING, AND AN OUTLET AT THE INDICATED LOCATION WITHIN SIC'S ENCLOSURE. THE CIRCUIT SHALL BE DEDICATED TO SIC SERVICE AND LABELLED AT THE CIRCUIT BREAKER.



**CAT5 TERMINATION DETAIL
BY HOMEOWNER/DEVELOPER**



05/07/2015

REVISED

MSC

**TELECOM/CATV
RESIDENTIAL INSTALLATION**

SCALE: NTS



**Sandwich Isles
Communications, Inc.**

A Waimana Company