



HAWAIIAN HOME LANDS
HAWAIIAN HOMES COMMISSION
DEPARTMENT OF HAWAIIAN HOME LANDS

Kaua'i Community Meeting

August 22, 2016

Chiefess Kamakahelei Middle School Cafeteria



HAWAIIAN HOME LANDS
HAWAIIAN HOMES COMMISSION
DEPARTMENT OF HAWAIIAN HOME LANDS

Chair's Update

Article XII Section 1

- 2 Critical Parts:

- (1) “The proceeds and income from Hawaiian home lands *shall* be used only in accordance with the terms and spirit of such Act.”
- (2) “The legislature shall make sufficient sums available for the following purposes (1)...lots; (2)...loans; (3) rehabilitation projects...(4) the administration and operating budget of the department of Hawaiian home lands; in furtherance of (1), (2), (3) and (4) herein, by appropriating the same in the manner provided by law.”

Nelson Case & Sufficient Funding

- **2007 – Beneficiaries filed suit against State for failure to “sufficiently fund” DHHL operations**
 - DHHL only state agency with constitutional mandate requiring the legislature provide “sufficient” funds
 - Hawaii State Constitution, Article XII, Section 1
 - 4 Purposes
- **2012 – Hawaii Supreme Court rules Courts can determine what is sufficient for operating and administrative expenses**
- **2015 – First Circuit Court rules \$28M+ sufficient for FY15-16**
 - 3/26/16 Court order amended to state legislature must comply with constitution and sufficiently fund DHHL’s operating and administrative expenses this fiscal year.

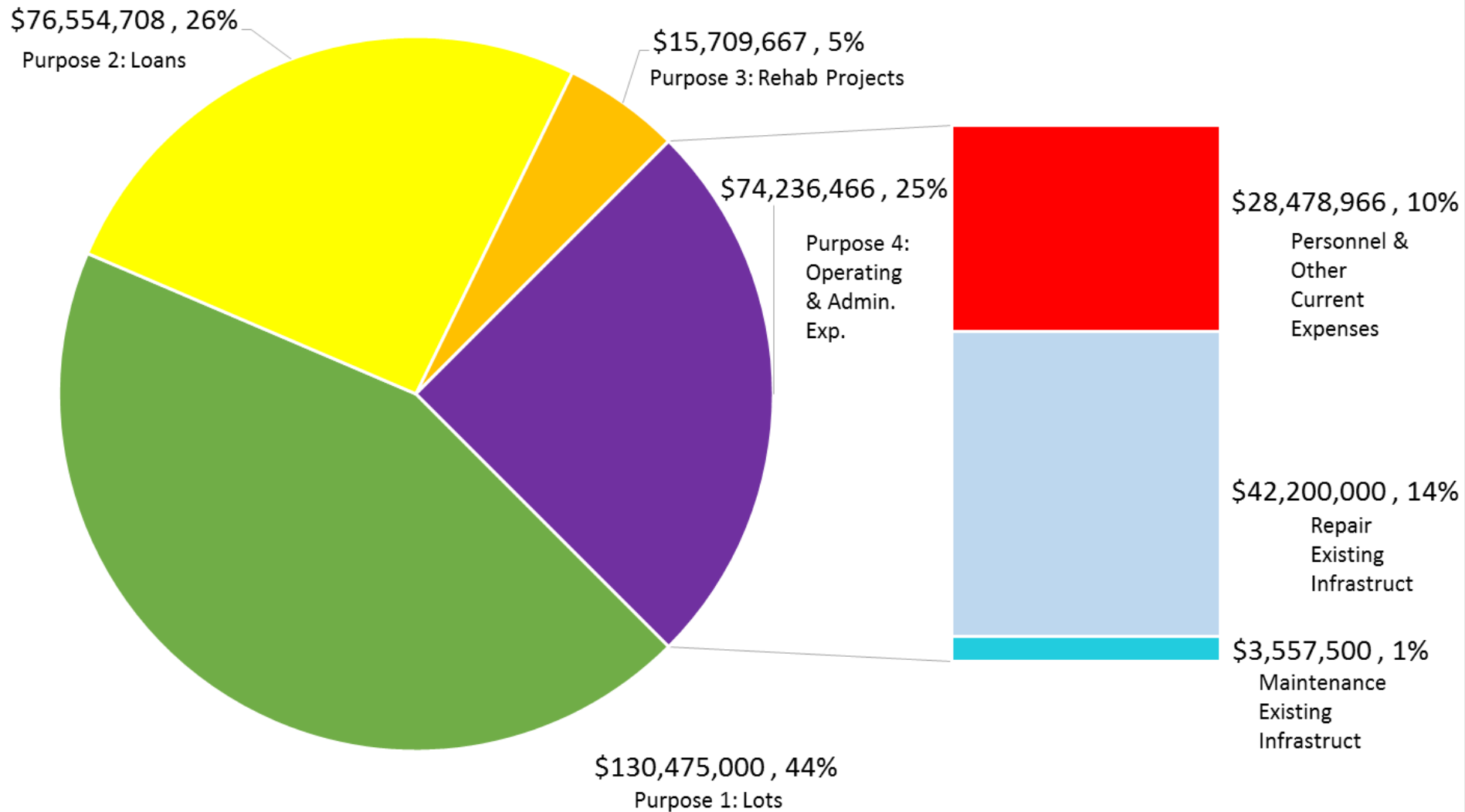
DHHL's Sufficient Funds Budget

FY 2017 – Four Purposes

• PURPOSE 1: LOTS	\$130,475,000
• PURPOSE 2: LOANS	\$ 76,554,708
• PURPOSE 3: REHAB PROJECTS	\$ 15,709,667
• PURPOSE 4: OPERATING & ADMIN (as defined by DHHL includes Repair & Maintenance Expenses)	\$ 74,236,466
TOTAL:	\$296,975,841

Source: Presented to the House Finance and Senate Ways & Means Committee. January 14, 2016. DHHL FY 2017 Supplemental Budget Request

DHHL SUFFICIENT FUNDS BUDGET "ASK" FY 2017



Purpose 4: Administrative and Operating Expenses (in State Operating Budget)

"Apples-to-Apples": DHHL General Funding FY 2016-17

	Nelson Case Decision: Sufficient Sums	State Legislature Act 124, SLH 2016	Difference
Personnel Services:	260 Positions \$ 13,838,391 Fringe: Not in DHHL's Budget; Funded by Dept of B&F Budget. \$ -	200 Positions \$ 11,258,975 Fringe: in DHHL's budget. \$ 5,854,667 Fringe: Transfer funds to Dept of B&F Budget for DHHL fringe \$ (5,854,667)	\$ (2,579,416) \$ 5,854,667 \$ (5,854,667)
Other Current Expenses:	All Administrative and Operating costs are General Funded \$ 14,640,575	Identified and excluded certain Budget Administrative and Operating codes; Legislature funded excluded codes in DHHL Special and Trust Funds \$ 6,811,698	\$ (7,828,877)
Total:	Sufficient Sums Determination \$ 28,478,966	Net \$ 18,070,673	\$ (10,408,293) General Fund Shortage





Interior Department Rules

- U.S. Dept. of the Interior issued two rules effective July 12, 2016:
 - Part 47: Land Exchange Procedures
 - Part 48: Procedures to Amend Hawaiian Homes Commission Act



HAWAIIAN HOME LANDS
HAWAIIAN HOMES COMMISSION
DEPARTMENT OF HAWAIIAN HOME LANDS

Planning Office Update

Native Hawaiian Beneficiaries

Applications

22,535 Residence
18,437 Agriculture
3,019 Pasture

WAIT LIST	APPLICATIONS
Residential	1,644
Agricultural	2,193
Pastoral	320
TOTAL Kauai:	4,157

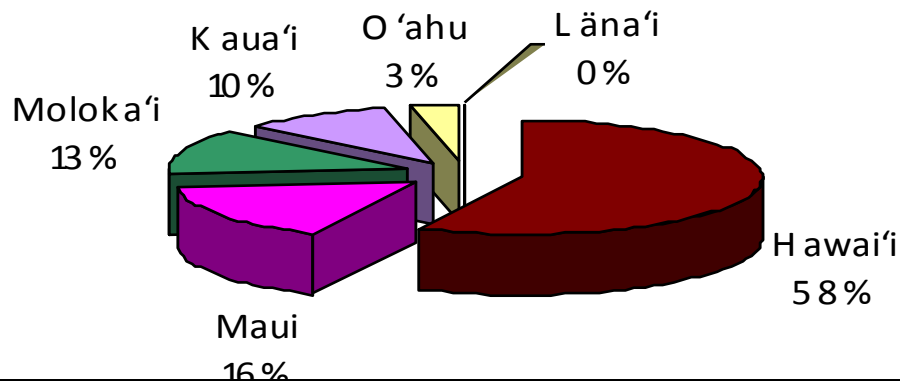
Lessees

8,306 Residence
1,099 Agriculture
408 Pasture

KAUAI	LESSEES
Residential	698
Agricultural	46
Pastoral	1
TOTAL Kauai:	745

DHHL Statewide Inventory

Hawaiian Home Lands Trust
Percent Acres by Island

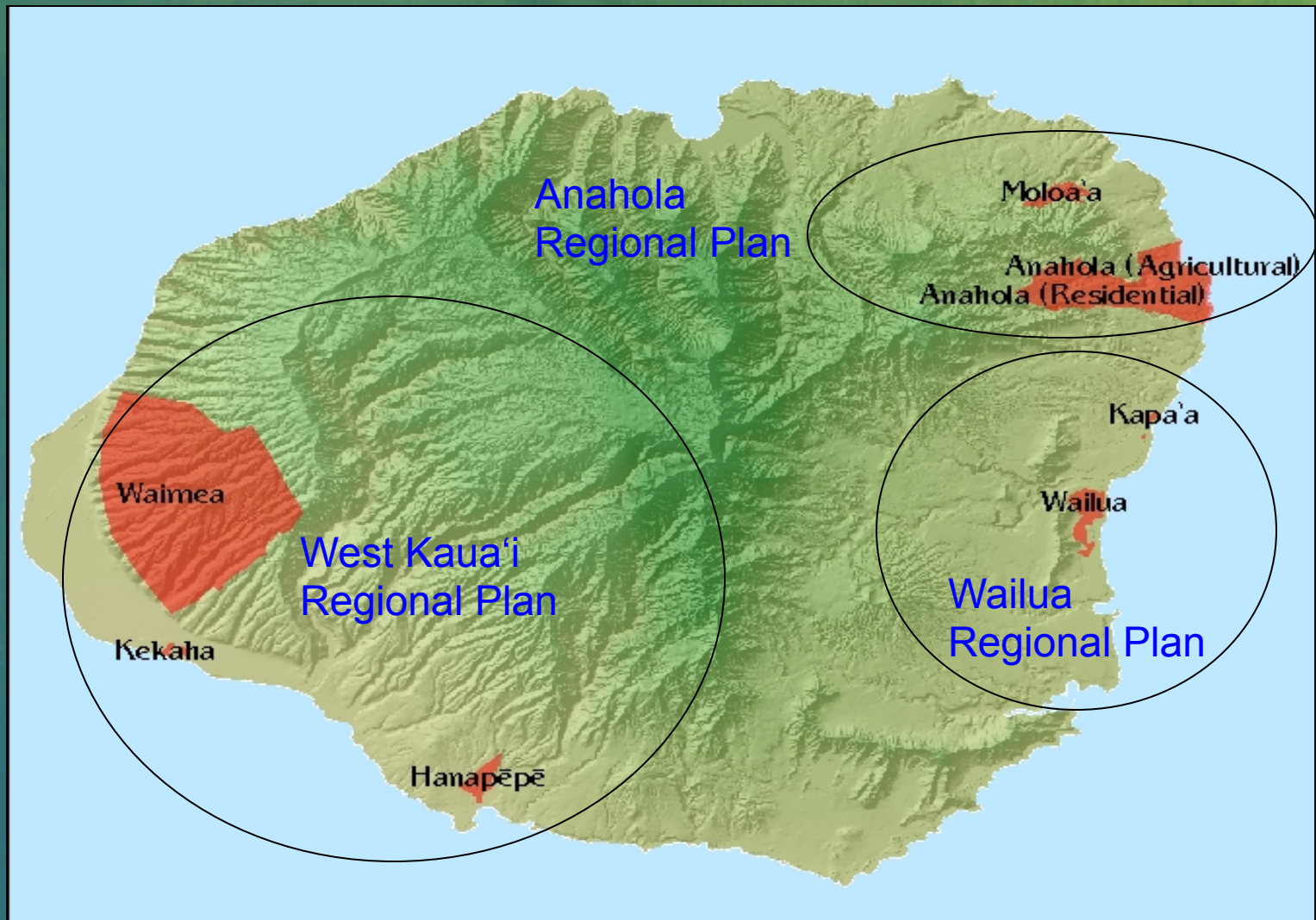


■ Hawai'i ■ Maui ■ Moloka'i ■ Kaula'i ■ O'ahu ■ Lāna'i

ISLAND	ACRES
Hawai'i	117,551
Maui	31,904
Moloka'i	25,748
Kaula'i	20,575
O'ahu	8,154
Lāna'i	50
TOTAL	203,982

DHHL Kaua'i Lands

20,575 acres



DHHL Planning Projects

- **Waiawa Valley DOH 1/2016 no impact on agricultural products food is safe**
- **Kumu Camp Project FONSI Approval 1/2016**
- **Continued Monitoring of CWRM and Waimea Water**
- **Farmers Market in Anahola opened 2016**



HAWAIIAN HOME LANDS
HAWAIIAN HOMES COMMISSION
DEPARTMENT OF HAWAIIAN HOME LANDS

Land Development Division Update

Legend

- DHHL Property
- Existing County Water Tank
- Existing Waterline
- Ditches
- Streams
- Reservoirs
- Piilani Mai Ke Kai

Map Labels:

- Kaneha Reservoir
- Field #1 Kealia Reservoir
- Field #2 Kealia Reservoir
- Field #3 Kealia Reservoir
- Upper Anahola
- Lower Anahola
- Anahola
- Existing Water Tank
- Kamehameha Rd
- Keolu Rd
- Piilani Mai Ke Kai

Scale: 0, 1,500, 3,000, 6,000 Feet

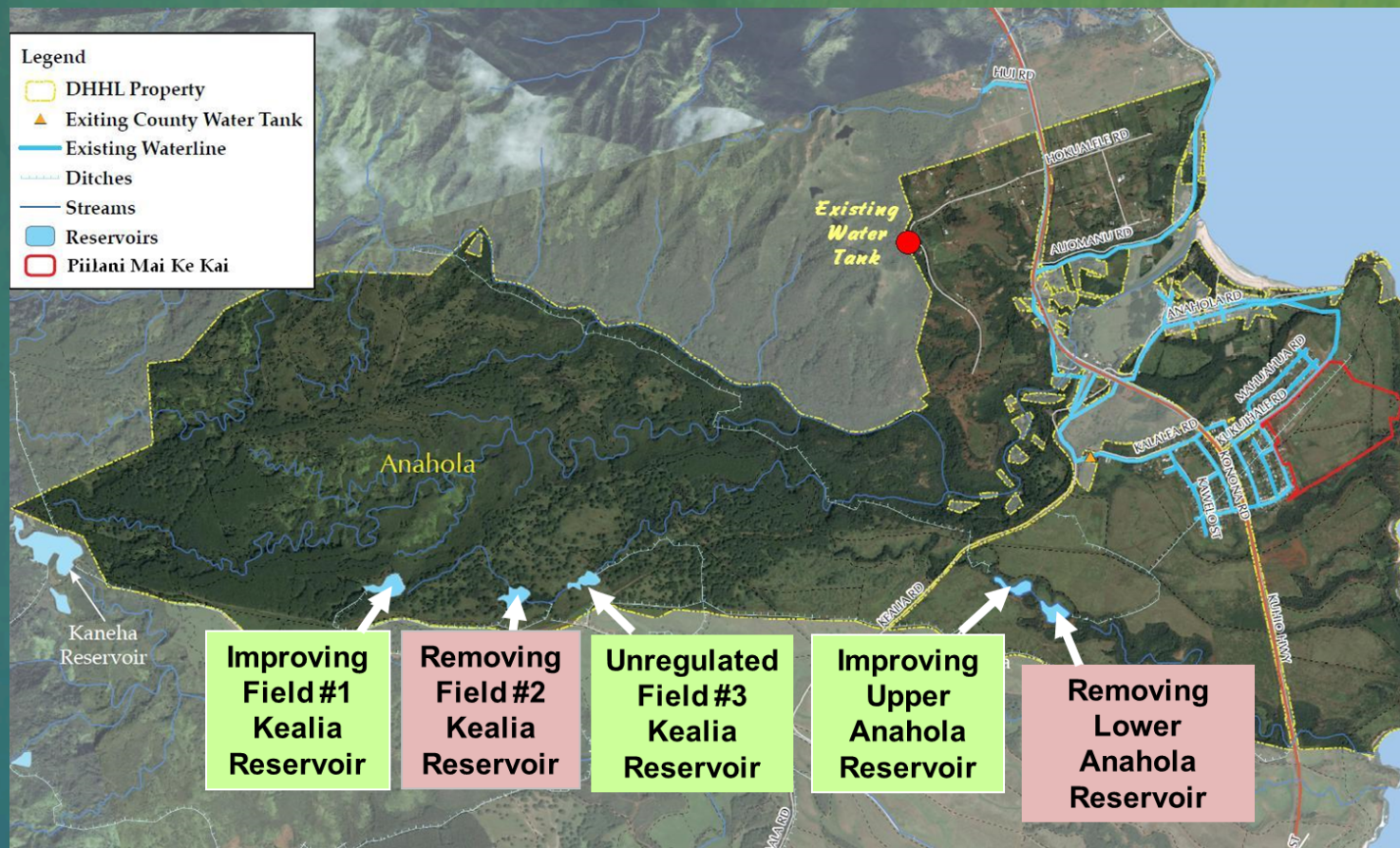
- **45 Anahola agricultural lots**
- **30 Bay View residential lots**
- **DHHL seeking \$6.2M from the USDA to fund improvements**

Proposed Anahola Farm Lots Water System Improvements

Objectives

- New concrete water tank**
- Pump station upgrades**
- Replacement of transmission and distribution pipes**
- Improvement of pressure regulation in mauka and makai lots**
- Upgrades to meters and backflow preventers**
- Upgrades to fire protection system**

Anahola Dam & Reservoir Improvements

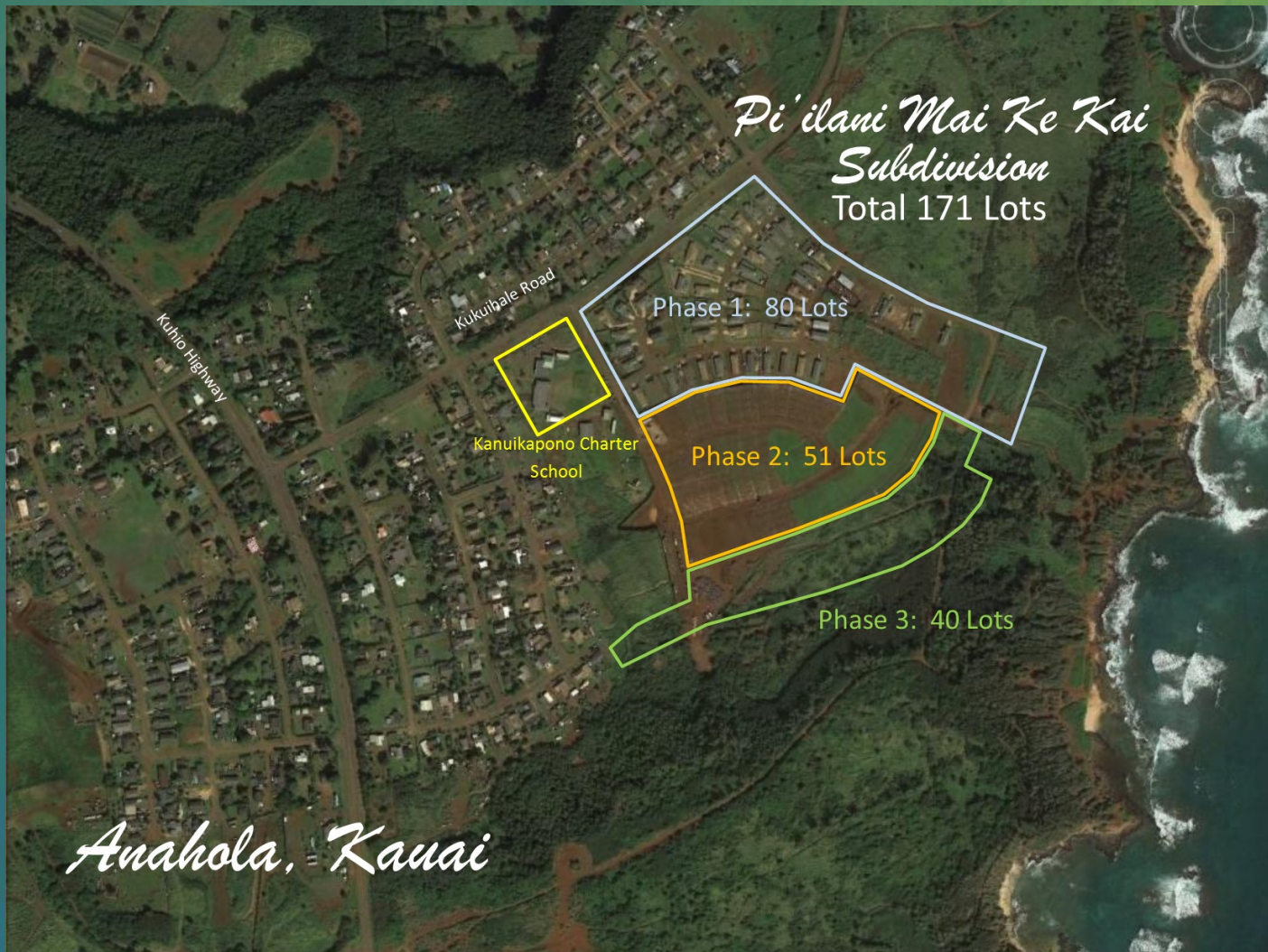


\$3 million legislative appropriation

Construction begins January 2017

Pi'ilani Mai Ke Kai, Phase II

51 single-family residential lots finished



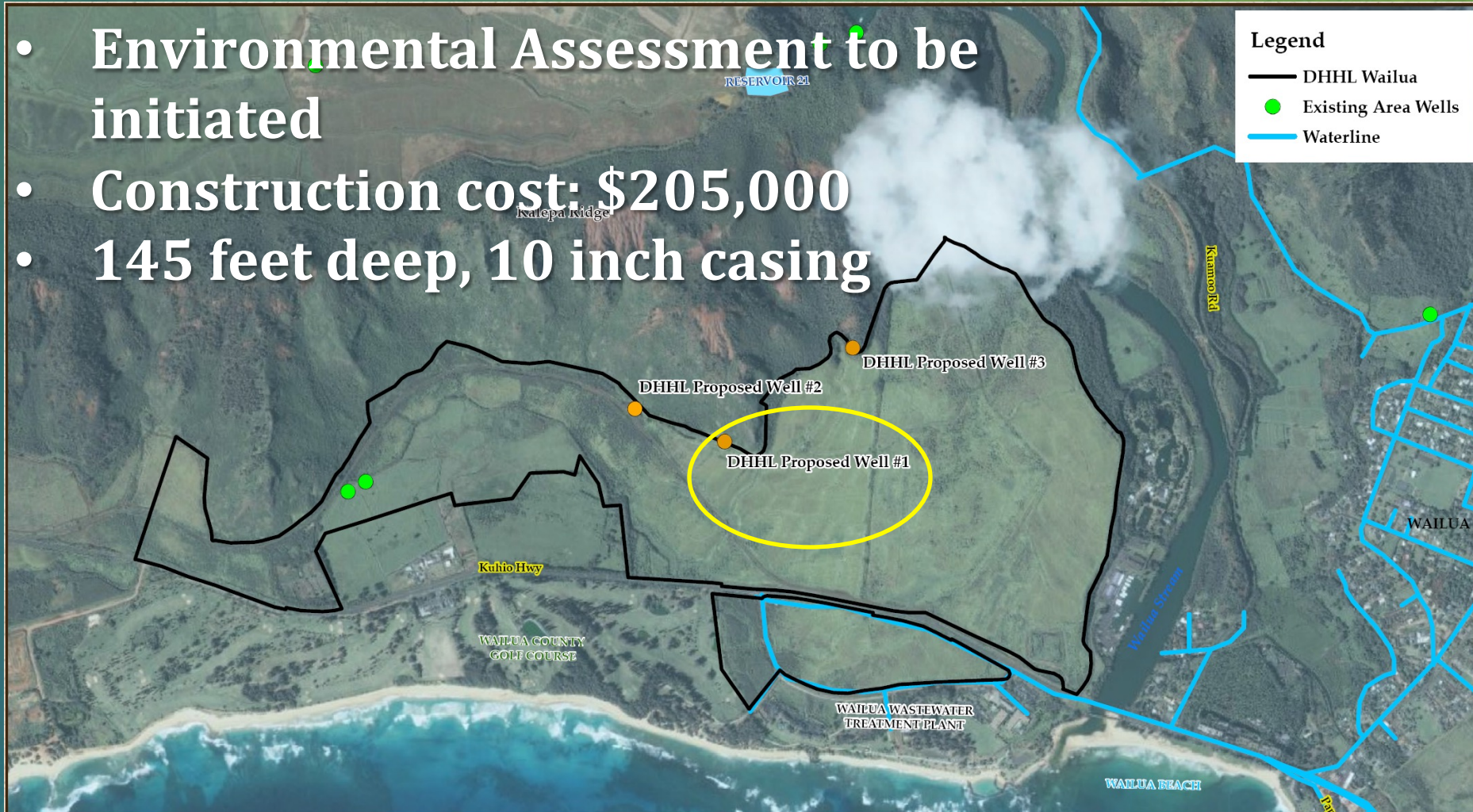
Undivided Interest in Anahola

- **22 Available Lots in Pi'ilani Mai Ke Kai, Ph. 1**
 - 51 lots soon to be made available in Pi'ilani Mai Ke Kai, Phase II
- **166 Undivided Interest Lessees in Anahola**
 - 45 UI lessees accepted PMKK home offering
 - 113 UI lessees remaining on the list
- **10 Offerings Made (to date)**
 - Includes turn key, self-help, owner-builder

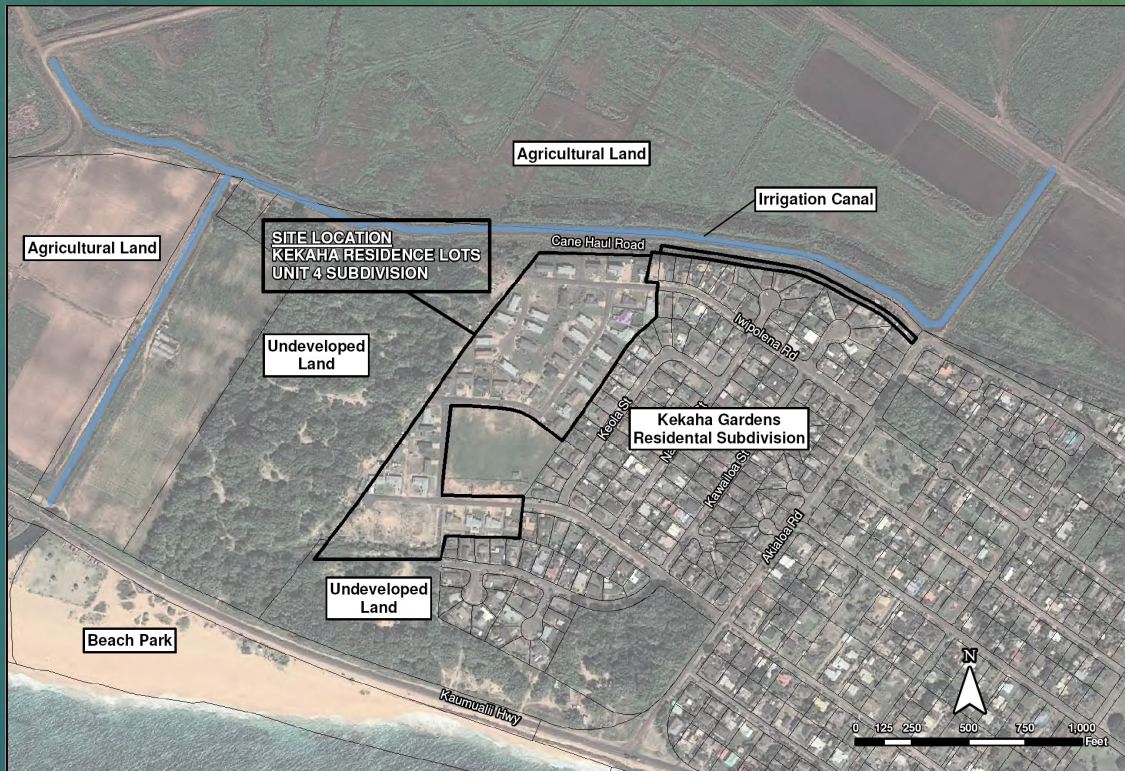
Wailua Well #1

Drill, Case & Pump Test

- Environmental Assessment to be initiated
- Construction cost: \$205,000
- 145 feet deep, 10 inch casing



Kekaha Environmental Assessment Reports



- Phase II Environmental Site Assessment completed Sept. 2015
- Two Environmental Hazard Management Plans in process
- Tar removal mitigation designs in process



HAWAIIAN HOME LANDS
HAWAIIAN HOMES COMMISSION
DEPARTMENT OF HAWAIIAN HOME LANDS

Homestead Community Update

Homestead Community Associations

- **Anahola Hawaiian Homes Association**
- **Kalalea Anehola Farmers Hui**
- **Kekaha Hawaiian Homestead Association**
- **Pi'ilani Mai Ke Kai Community Association**
- **West Kaua'i Association**
- **West Kaua'i Hawaiian Beneficiaries &
Wait List Applicants Association**
- **Hawaii Community Development Corp,**



HAWAIIAN HOME LANDS
HAWAIIAN HOMES COMMISSION
DEPARTMENT OF HAWAIIAN HOME LANDS

Open House

Community Organizations

- **Ho'oulu Lāhui**
- **Office of Hawaiian Affairs**
- **Sandwich Isles Communications**
- **Senior Medicare Patrol**