



Tonight's Agenda

Purpose of meeting: Receive comment & feedback on the draft plan

- I. What did we do: A Review of the Planning Process Completed to Date
- II. What people told us: Results of Beneficiary Consultation to Date
- III. Pana'ewa Priorities: Overview of Priority Projects
- IV. Discussion & Feedback
- V. Next Steps

What did we do: A Review of the Planning Process Completed to Date

Dates	Activity	Accomplishments
March 2016	Meeting #1 held on March 8.	Introduce the planning process and the planning team to the community. ID characteristics of a healthy and thriving Pana'ewa Homestead Community
April 2016	Met with Pana'ewa Hawaiian Home Lands Association (PHHLCA) board on April 5. Met with Keaukaha-Pana'ewa Farmers Association (KPFA) Board April 16. Meeting #2 held on April 30.	Learn more about current initiatives that PHHLCA and KPFA boards are working on. Identify current issues, concerns, and opportunities. Create solutions related to the above and identify priorities and priority projects.
June 2016	Met with PHHLCA board on June 7.	Receive feedback from PHHLCA board on draft priority projects.
July 2016	Met with KPFA board on July 16.	Receive feedback from the board on draft KPFA priority projects.
September 2016	Meeting #3 (Tonight).	Receive beneficiary feedback and input on the draft plan.



What People Told Us

VISION STATEMENT -- What people want to see

"The Pana'ewa Homestead is a connected community that promotes collective health and wealth, succession of generational knowledge and practices, and access to resources and services through community and agriculture activities."

CHARACTERISTICS OF A HEALTHY THRIVING PANA'EWA

- Culture connects generations
- Development of community facilities, services, and amenities
- Agricultural viability
- Safe environment for youth
- Creation of new homestead opportunities for wait-list applicants
- Thriving economy
- Adequate infrastructure to meet current and future needs

What People Told Us: Priorities

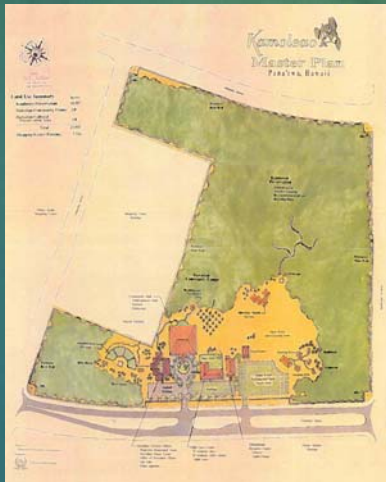


Priority Projects

1. Kamoleao Implementation
2. Pana'ewa Park and Family Center Management
3. Agriculture Capacity Building – Marketing and Training Center
4. DHHL Island Plan Update for East Hawai'i



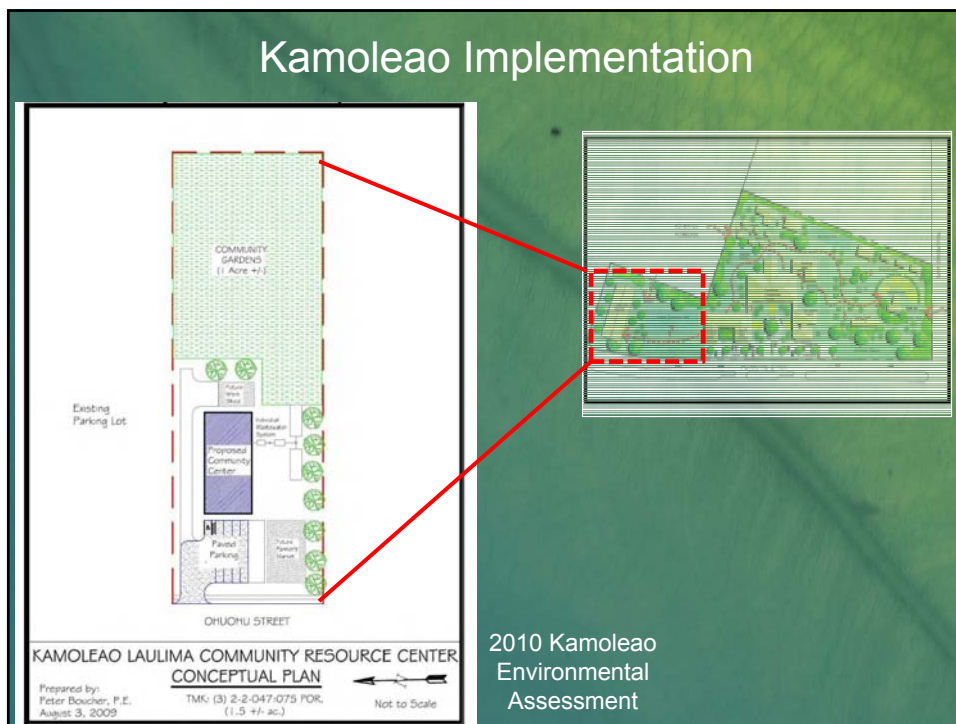
Priority Project: Kamoleao Implementation



1994 Kamoleao Master Plan



2005 Kamoleao Master Plan



Priority Project Matrix ideas that could potentially be implemented at Kamoleao

<p><u>Easy to Implement / High Impact</u></p> <ul style="list-style-type: none"> • Open/natural space at Kamoleao • Health education / outreach for prevention • Training and employment • Elderly "Playground" • Pre-school and after school program • Cultural programs and history of Pana'ewa • Community garden / la'au lapa'au • Multi-purpose center and kitchen with multi-media • Shared gardening • Trade • Strengthen relationships 	<p><u>Hard to Implement / High Impact</u></p> <ul style="list-style-type: none"> • Meals to keiki & kūpuna (certified kitchen) • Mixed community use and commercial • Senior housing • Park • Health center / medical clinic • Sewer connection to Kamoleao • One-stop Hawaiian agencies • Commercial/Industrial small business incubator <p><u>Hard to Implement / Low Impact</u></p> <ul style="list-style-type: none"> • Cemetery
---------------------------------------------------------------------------------------------------------------------------------------------------------------------------------------------------------------------------------------------------------------------------------------------------------------------------------------------------------------------------------------------------------------------------------------------------------------------------------------------------------------------------------------------------------	---------------------------------------------------------------------------------------------------------------------------------------------------------------------------------------------------------------------------------------------------------------------------------------------------------------------------------------------------------------------------------------------------------------------------------------------------------------------------------------------------------------------------------------

Kamoleao Implementation

Project Objectives:

- Improve Health & Wellness
- Increase Economic Self-Sufficiency
- Provide Access to Native Hawaiian Opportunities
- Promote Technology Capability
- Provide a Peaceful Place of Refuge

Implementation Action Steps:

1. Finalize Phase 1 Programming
 - a) Option 1 – Develop 1.5 acres as described in 2010 EA
 - b) Option 2 – Create a new master plan and EA for 12 acre parcel.
2. Develop a Financial Plan
3. Phase 2 Master Plan (only if OPTION 1 is chosen).
4. Sewer Line Extension.
5. HHC Approval.
6. Annual Review.

Priority Project: Pana'ewa Park and Family Center Management





Priority Project Matrix ideas that could potentially be implemented at the Pana'ewa Park

Easy to Implement / High Impact

- Health education and outreach for prevention
- Training and employment
- Elderly "Playground"
- Pre-school and after school program
- Cultural programs and history of Pana'ewa
- Expand existing programs
- Strengthen relationships

Hard to Implement / Low Impact

- Small concession facility

Pana'ewa Park and Family Center Management

Project Objectives:

- Increase opportunities for social, cultural, and educational programs
- Increase beneficiary control over park management

Implementation Action Steps:

1. Develop a program plan for the park.
2. Cooperative Agreement with the County.
3. Financial Plan.
4. Scheduling procedures and user protocols.
5. Annual review.

Priority Project : Agriculture Capacity Building – Marketing and Training Center



Priority Project Matrix ideas that could potentially be implemented at the KPFA Farmers Market site

Easy to Implement / High Impact

- Community garden / la'au lapa'au
- Green waste mulching (access to)
- Establish program to market ag/value-added products
- Convert KPFA ROE to long-term license
- Farmer training programs
- Animal husbandry
- Hydroponics
- Shared gardening
- Strengthen relationships

Hard to Implement / High Impact

- Farm-to-school
- Ag processing plant for value added products
- Community ag-facility with access to shared equipment

Agriculture Capacity Building – Marketing and Training Center

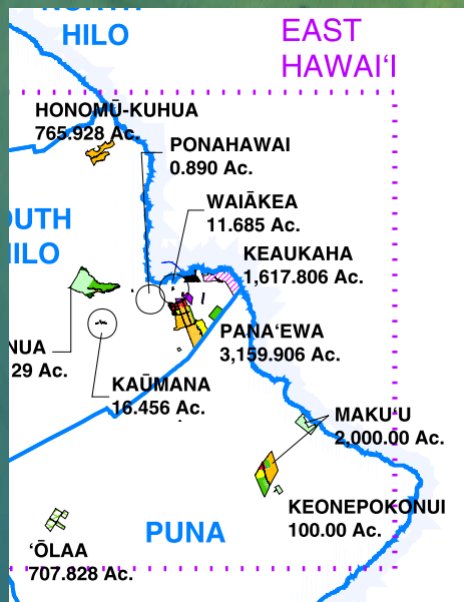
Project Objectives:

- Agriculture Business Capacity Building.
- Agriculture Production Support.
- Pooling Resources.
- Interdependence.

Implementation Action Steps:

1. Farmers Market Strategic Plan.
2. Demonstration and Training Program.
3. Community Gardens.
4. Long-Term License.
 - a) ID the licensee
 - b) Site plan.
 - c) Financial plan.
5. Annual Review

Priority Project: DHHL Island Plan Update for East Hawai'i





Priority Project Matrix ideas that would be Addressed in an East Hawai'i Island Plan Update

Easy to Implement / High Impact

- Land use amendment beneficiary consultation process for Pana'ewa
- Strengthen relationships

Hard to Implement / High Impact

- Exchange lands – outlying lands
- Future development areas – partner [on] infrastructure
- Commercial / industrial incubator small business (Affordable)

DHHL Island Plan Update for East Hawai'i

Project Objectives:


- ID Additional Homestead Opportunities.
- ID Commercial Opportunities for Beneficiaries.
- Beneficiary Consultation.


Implementation Action Steps:


1. Obtain Funding.
2. Procurement.
3. Inform Community.
4. Plan.
5. HHC Approval.

Discussion

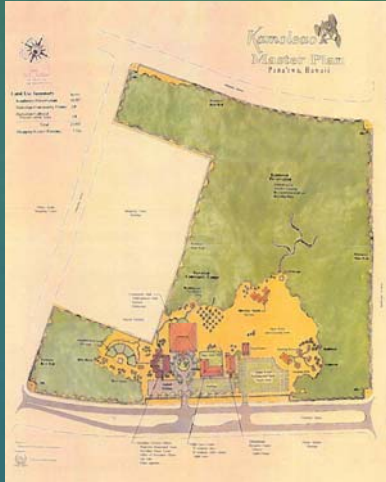
- Questions, comments, suggestions for improvements on priority projects.
- Other comments or questions?

 = I like the proposal. No changes are needed.

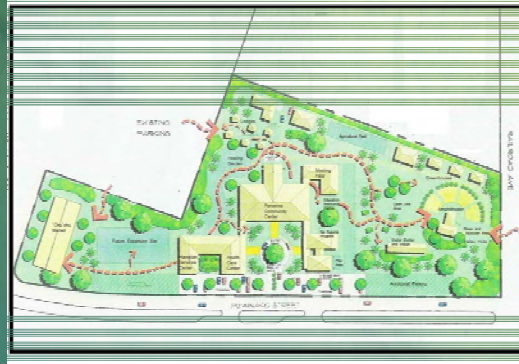
 = I generally like the proposal. But I think some changes are needed.

 = I am strongly opposed to the proposal. Delete it from the plan.

Priority Project: Kamoleao Implementation



1994 Kamoleao Master Plan



2005 Kamoleao Master Plan

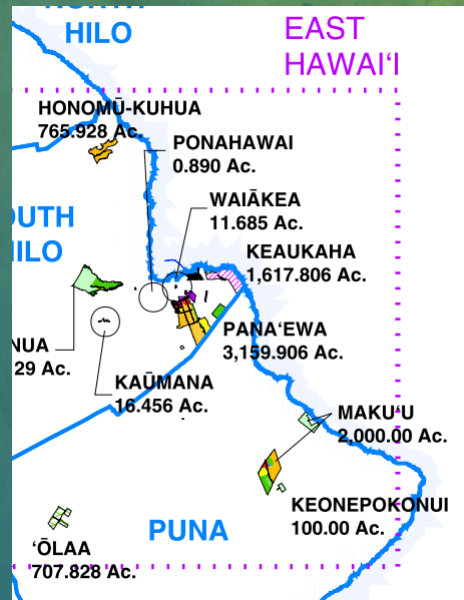
Priority Project: Pana'ewa Park and Family Center Management



Priority Project : Agriculture Capacity Building – Marketing and Training Center



Priority Project: DHHL Island Plan Update for East Hawai'i



Other Comments or Questions?

NEXT STEPS

- Revise draft plan per comments received and finalize plan;
- Seek HHC approval of plan at the October 2016 HHC meeting in Hilo;