



HAWAIIAN HOME LANDS
HAWAIIAN HOMES COMMISSION
DEPARTMENT OF HAWAIIAN HOME LANDS

Kaua'i Community Meeting

October 19, 2015

Chiefess Kamakahelei Middle School Cafeteria



HAWAIIAN HOME LANDS

HAWAIIAN HOMES COMMISSION
DEPARTMENT OF HAWAIIAN HOME LANDS

DHHL Update



HAWAIIAN HOME LANDS
HAWAIIAN HOMES COMMISSION
DEPARTMENT OF HAWAIIAN HOME LANDS

Chair's Message

Laying the Foundation

Guiding Principles

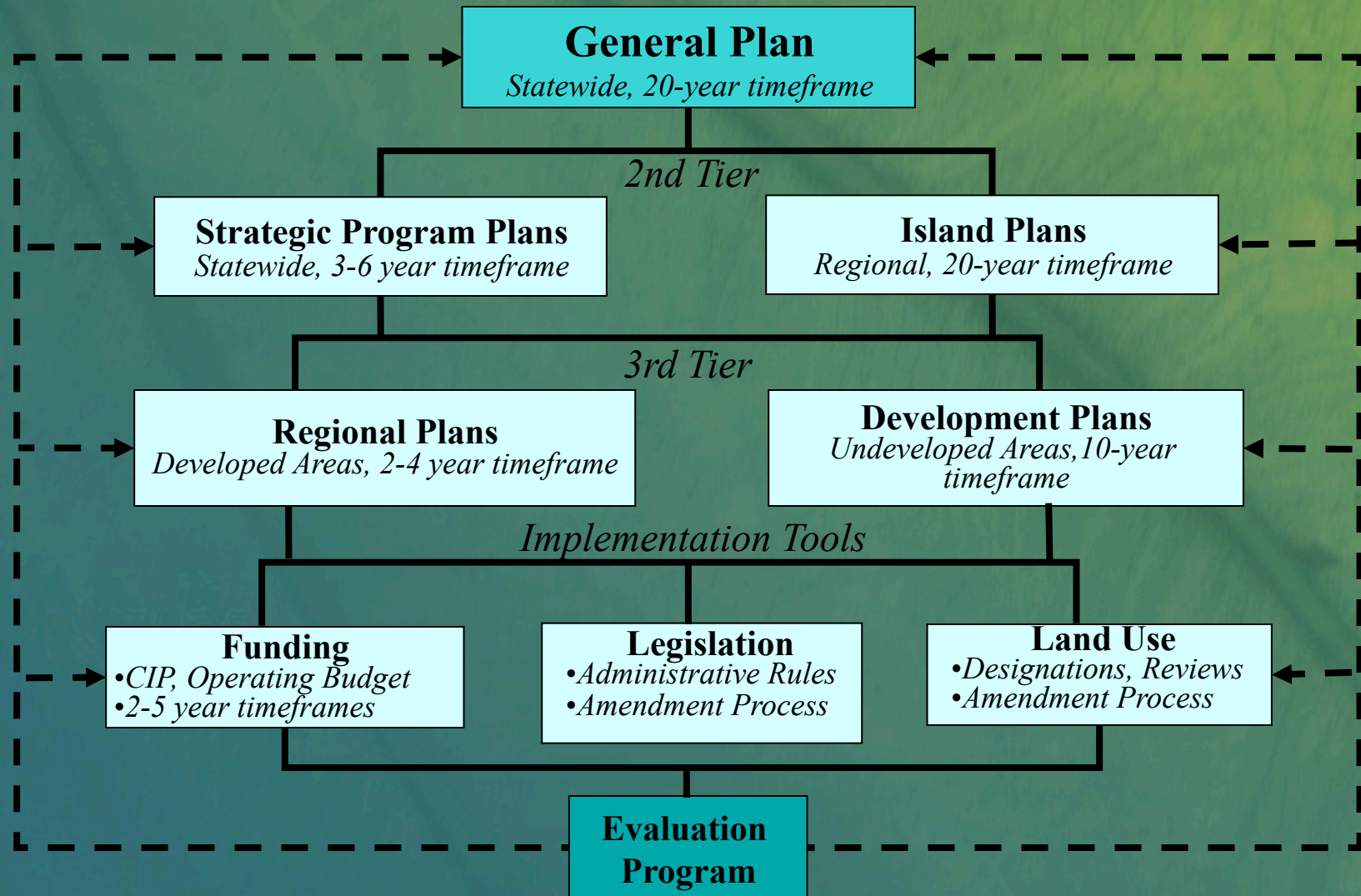
- Returning to the 'āina continues to be the piko to the restoration of our people
 - Consistent with the intent of Prince Kūhiō
- Decisions in the best interest of the trust – for all beneficiaries current and future

Laying the Foundation

Guiding Principles *(Continued)*

- **We all have kuleana:**
 - DHHL: to use public and trust resources efficiently and effectively;
 - Beneficiaries: to use the lands that are awarded and not let it sit idle.
- **Home lands are an opportunity**
 - We strive to direct our energies to those yet to benefit and those with no other opportunity to return to the land.

DHHL Planning System



Setting the course ahead based on the planning we have done ...

General Plan (7 years remaining)

Progress started on goals and objectives aligned with Five Focus Areas of former administration:

- FOCUS 1: Financial stability of DHHL & improved servicing
 - Goal: Generate significant revenue to provide greater financial support towards fulfilling the Trust's mission.
- FOCUS 2: Affordability of our housing product offerings
 - Goal: Provide residential homesteads, financing and other housing opportunities especially to those most in need.
- FOCUS 3: Agricultural program
 - Goal: Increase the number of agricultural and pastoral leases awarded each year.

Setting the course ahead (Continued)

General Plan (7 years remaining) (Continued)

Progress started on goals and objectives aligned with Five Focus Areas of former administration:

- FOCUS 4: Energy and water policies & implementation
 - Goal: Ensure the availability of sufficient water to carry out Hawaiian Home Lands' mission.
 - Goal: Be responsible, long-term stewards of the Trust's lands and the natural, historic and community resources located on these lands.
- FOCUS 5: Support of homestead community leadership and projects
 - Goal: Empower the homestead associations to manage and govern their communities.



HAWAIIAN HOME LANDS
HAWAIIAN HOMES COMMISSION
DEPARTMENT OF HAWAIIAN HOME LANDS

Planning Office Update

Planning Office Update

- 1. Beneficiaries**
- 2. Lands**
- 3. Plans**
- 4. Planning Projects**

Native Hawaiian Beneficiaries

Applications

20,801 Residence
18,123 Agriculture
2,865 Pasture

WAIT LIST	APPLICATIONS
Residential	1,556
Agricultural	2,172
Pastoral	281
TOTAL Kauai:	4,009

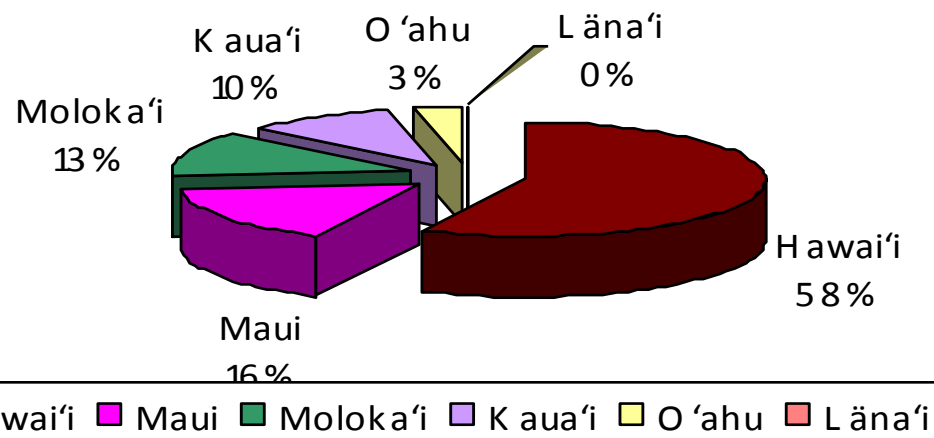
Lessees

8,328 Residence
1,101 Agriculture
408 Pasture

KAUAI	LESSEES
Residential	700
Agricultural	46
Pastoral	1
TOTAL Kauai:	747

DHHL Statewide Inventory

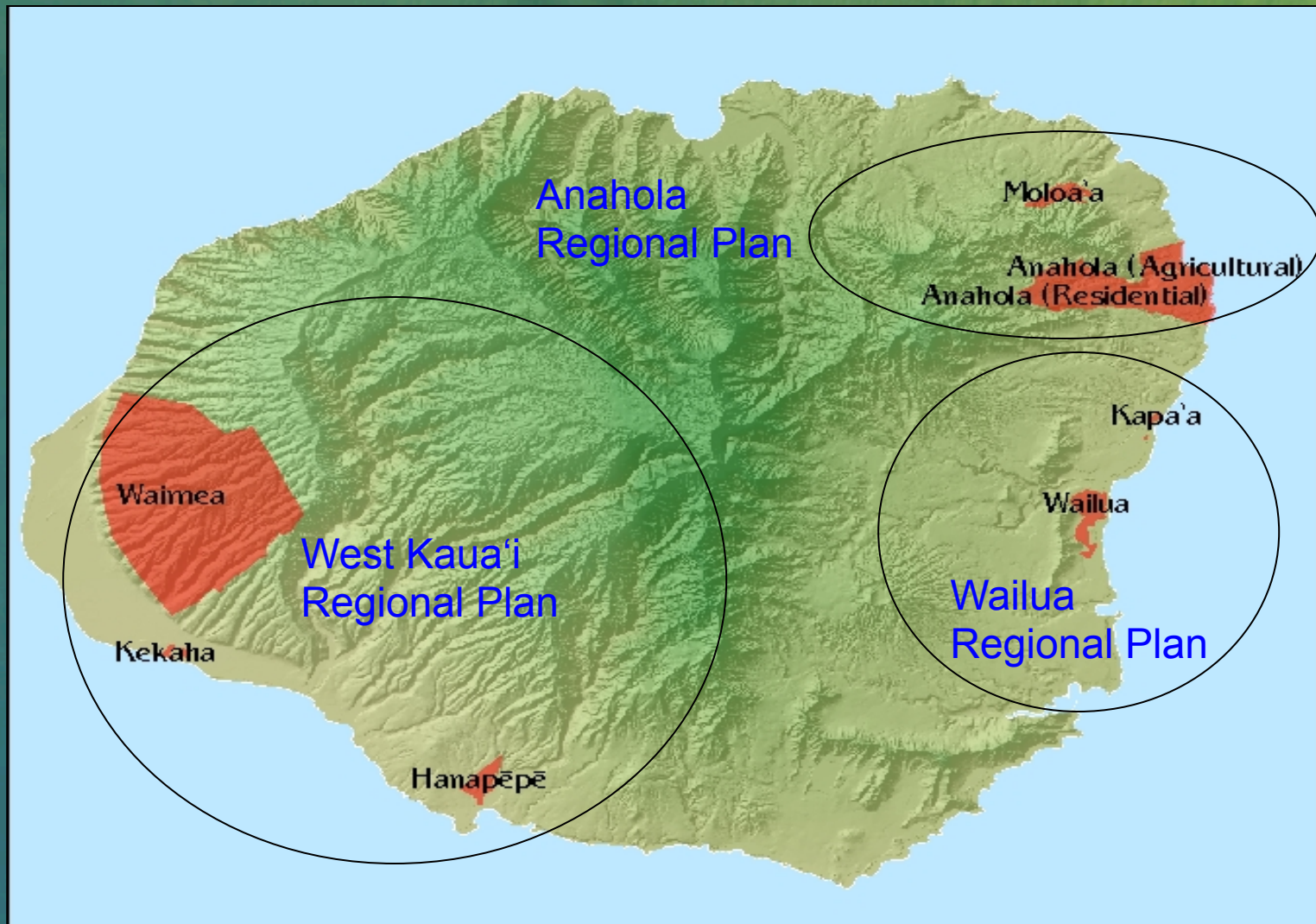
Hawaiian Home Lands Trust
Percent Acres by Island



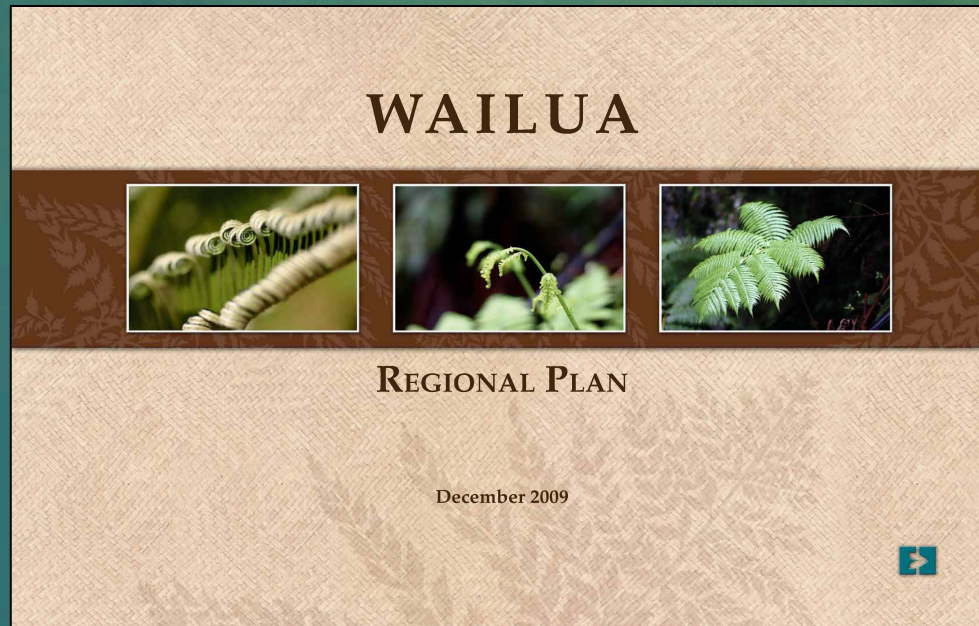
ISLAND	ACRES
Hawai'i	117,551
Maui	31,904
Moloka'i	25,748
Kaua'i	20,575
O'ahu	8,154
Lāna'i	50
TOTAL	203,982

DHHL Kaua'i Lands

20,575 acres

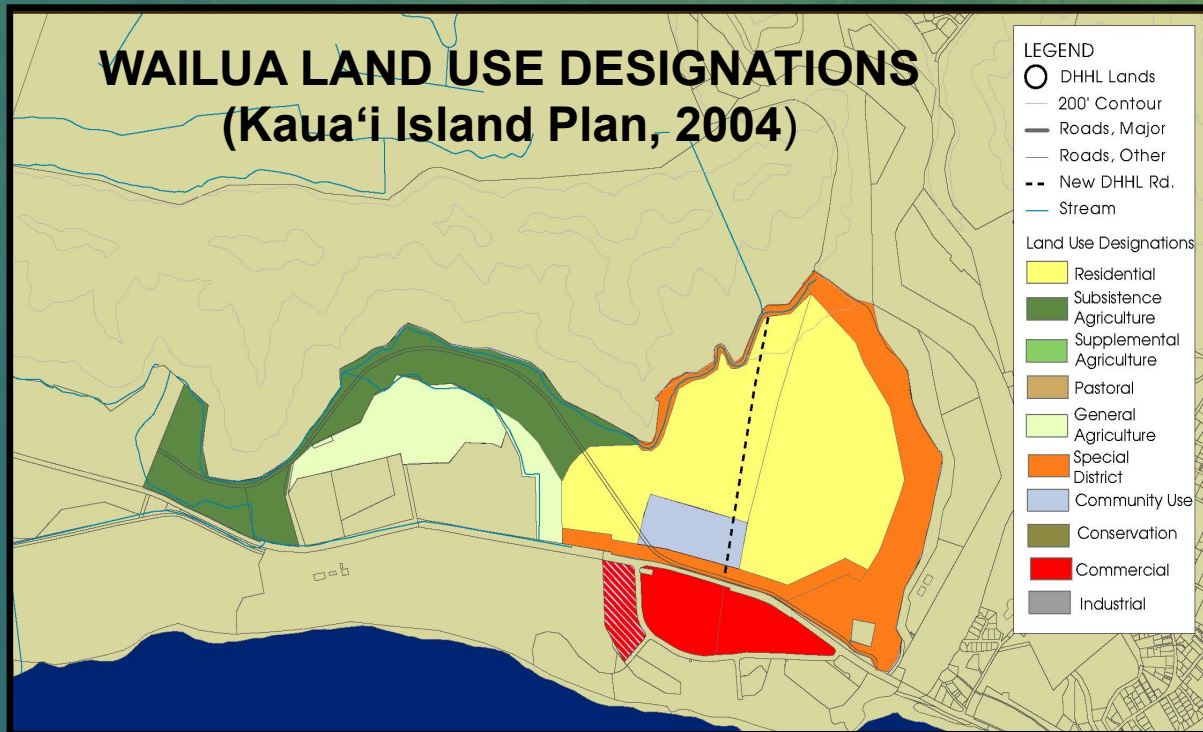


Wailua Regional Plan



- Originally approved in June 2007
- Updated in December 2009
- Land Area: 545 acres
- Most Preferred Location: Residential Homesteading
- Development Focus: Secure Water Source

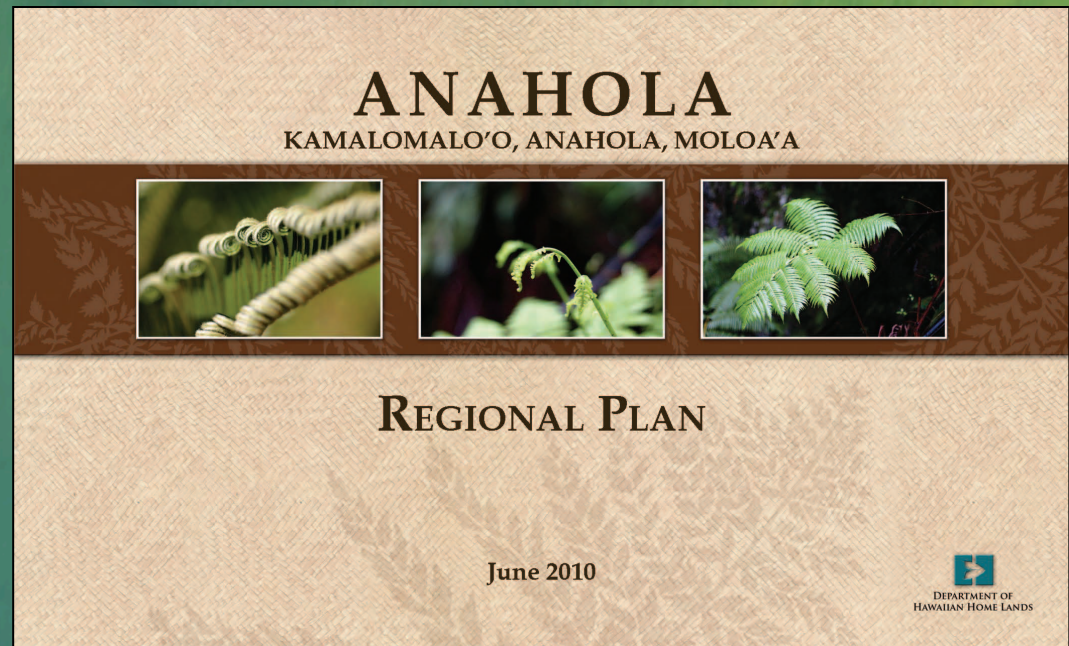
DHHL Wailua Lands



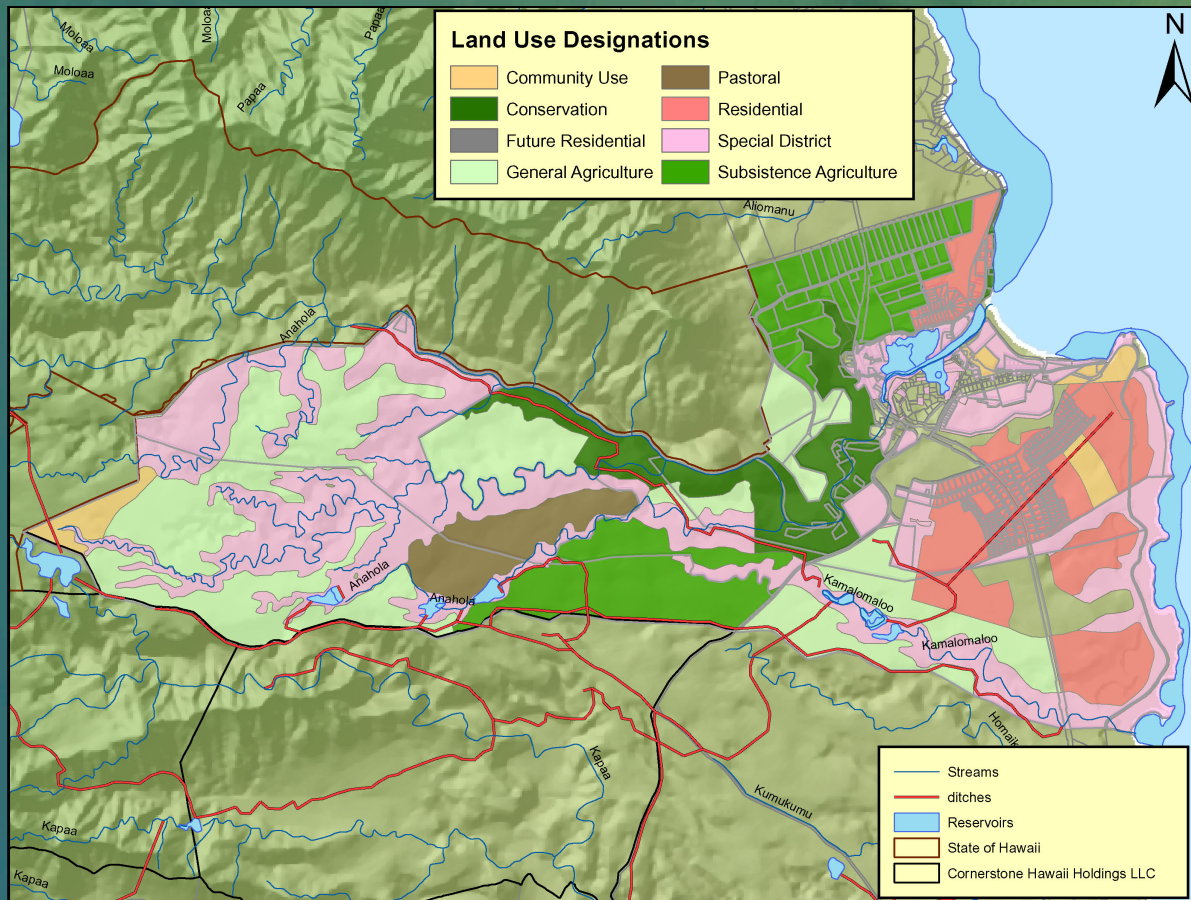
- Wailua lands is approximately 545 acres (3 percent of Kaua'i lands)
- Aloha Beach Resort conveyed to DHHL – approximately 10 acres.
- All vacant land; wetland area
- Exploratory wells revealed water source on-site—we're currently encasing the new well for future use.

Anahola Regional Plan

- Originally Approved in June 2007
- Updated in June 2010
- Land Area:
 - 4,228 acres Anahola
 - 316 acres Moloa'a
- Anahola Town Center Plan
- Development Focus: Pi'ilani Mai Ke Kai

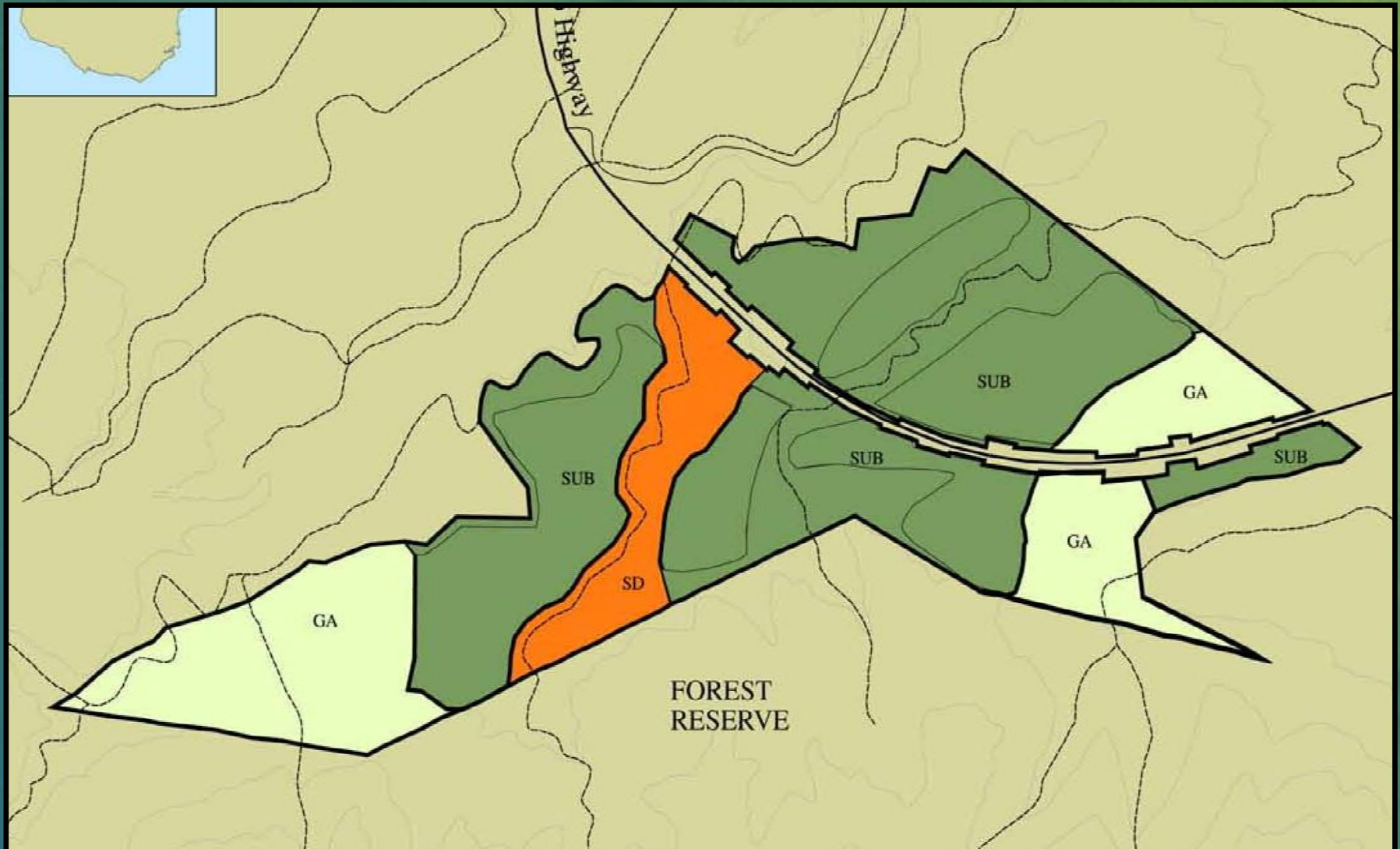


DHHL Anahola Lands

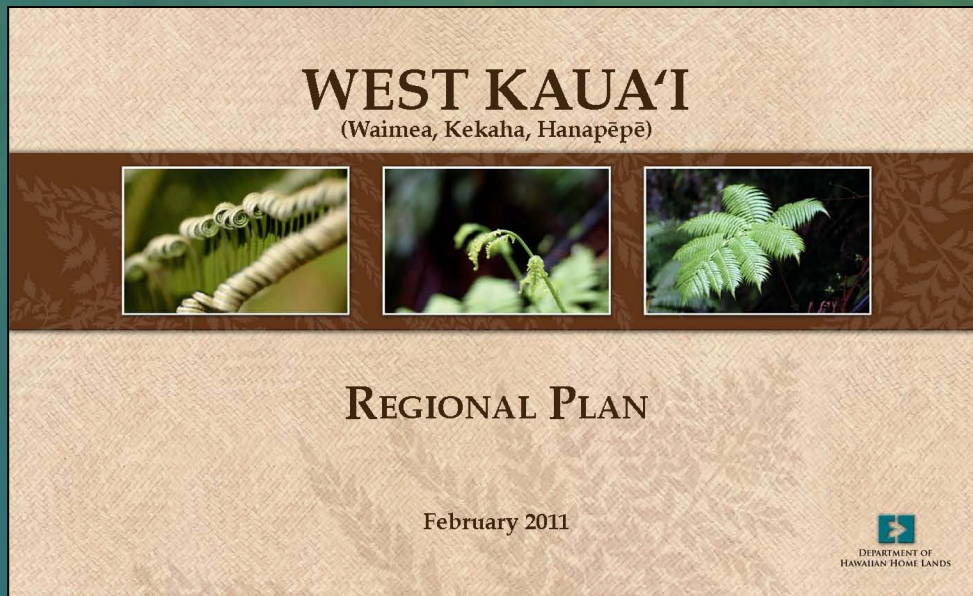


- Approximately 4,500 acres (21 percent of Kaua'i lands)
- 267 Subsistence Agriculture
- Anahola Homesteads
 - 535 Residential
 - 46 Agriculture Lessees
 - On Deck: Pi'ilani Mai Ke Kai

Moloa'a Land Use Designations

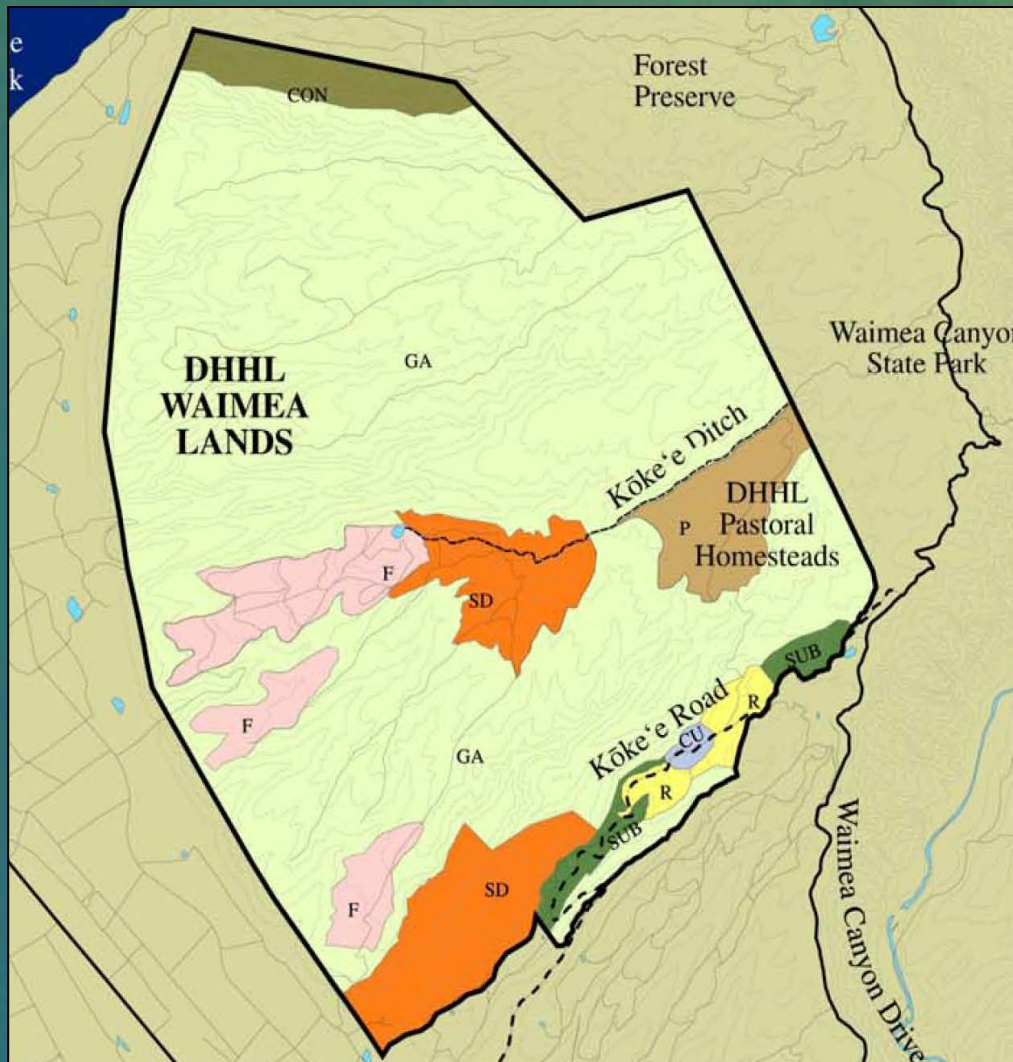


West Kaua'i Regional Plan



- Approved in June 2011
- Land Area:
 - 15,061 acres Waimea
 - 52 acres Kekaha
 - 365 acres Hanapēpē
- Development Focus:
Ag, Water & Energy

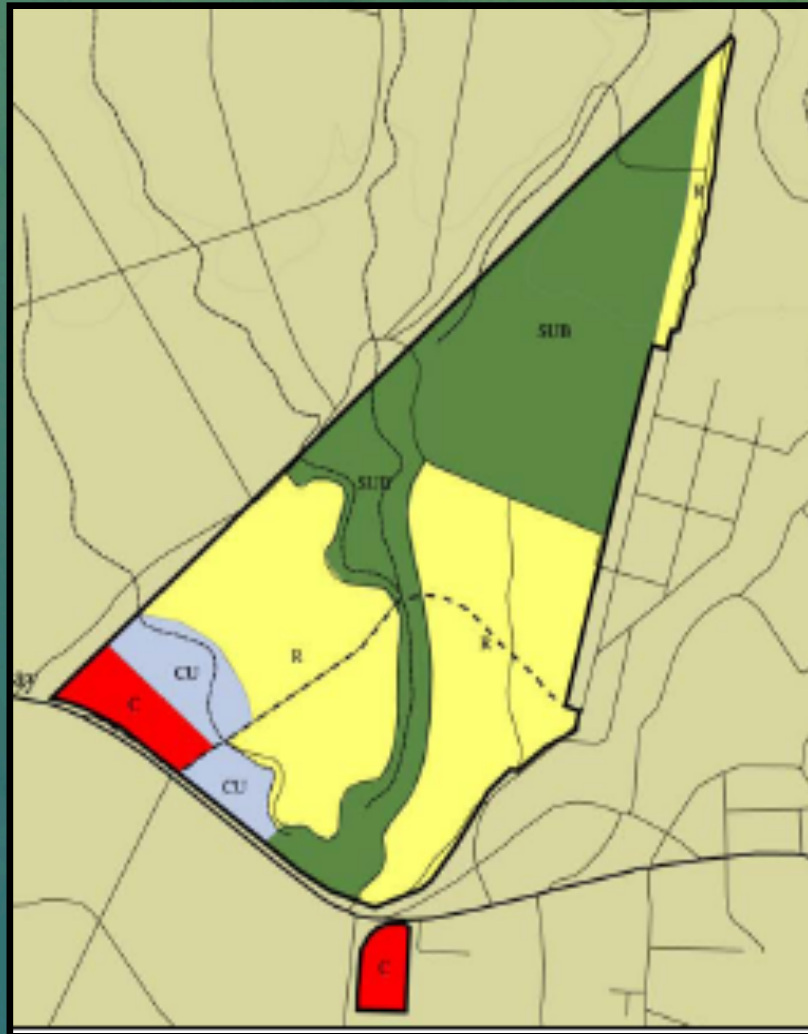
DHHL West Kaua'i Lands



- Approximately 15,478 acres (75% of Kaua'i lands)
- 1 Pastoral Lessee – Waimea
- DOFAW Game Management

West Kaua'i Homesteads

46 Residential – Hanapēpē



West Kaua'i Homesteads

117 Residential - Kekaha



DHHL Planning Projects

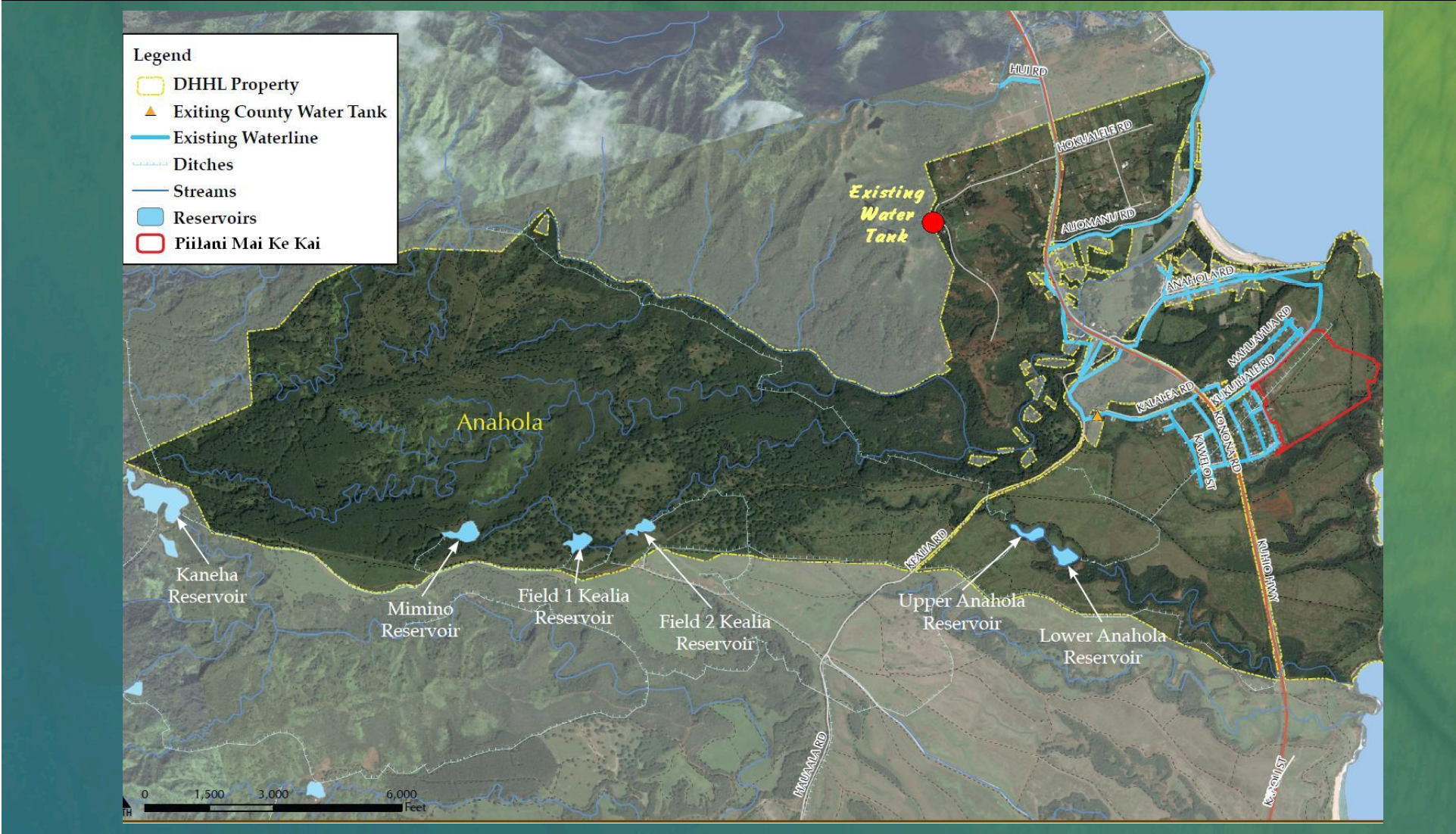
- **Waiawa Valley pending DOH review 11/15**
- **Kumu Camp Project FEA and FONSI 11/15**
- **Continued Monitoring of CWRM and Waimea Water**
- **Reviewing efforts to re-open Farmers Market in Anahola**
- **Kauai General Plan Update announcement**

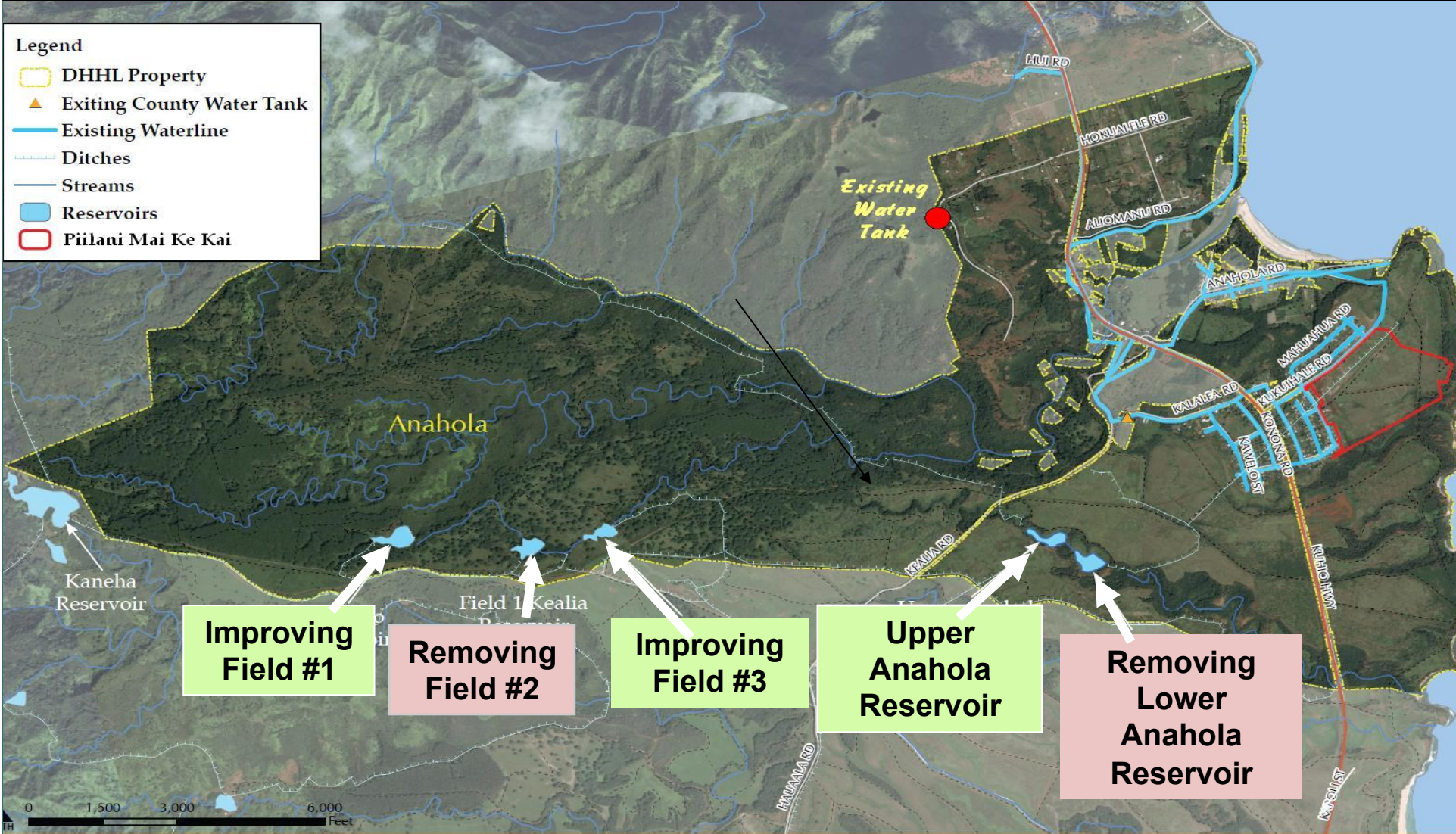


HAWAIIAN HOME LANDS
HAWAIIAN HOMES COMMISSION
DEPARTMENT OF HAWAIIAN HOME LANDS

Land Development Division Update

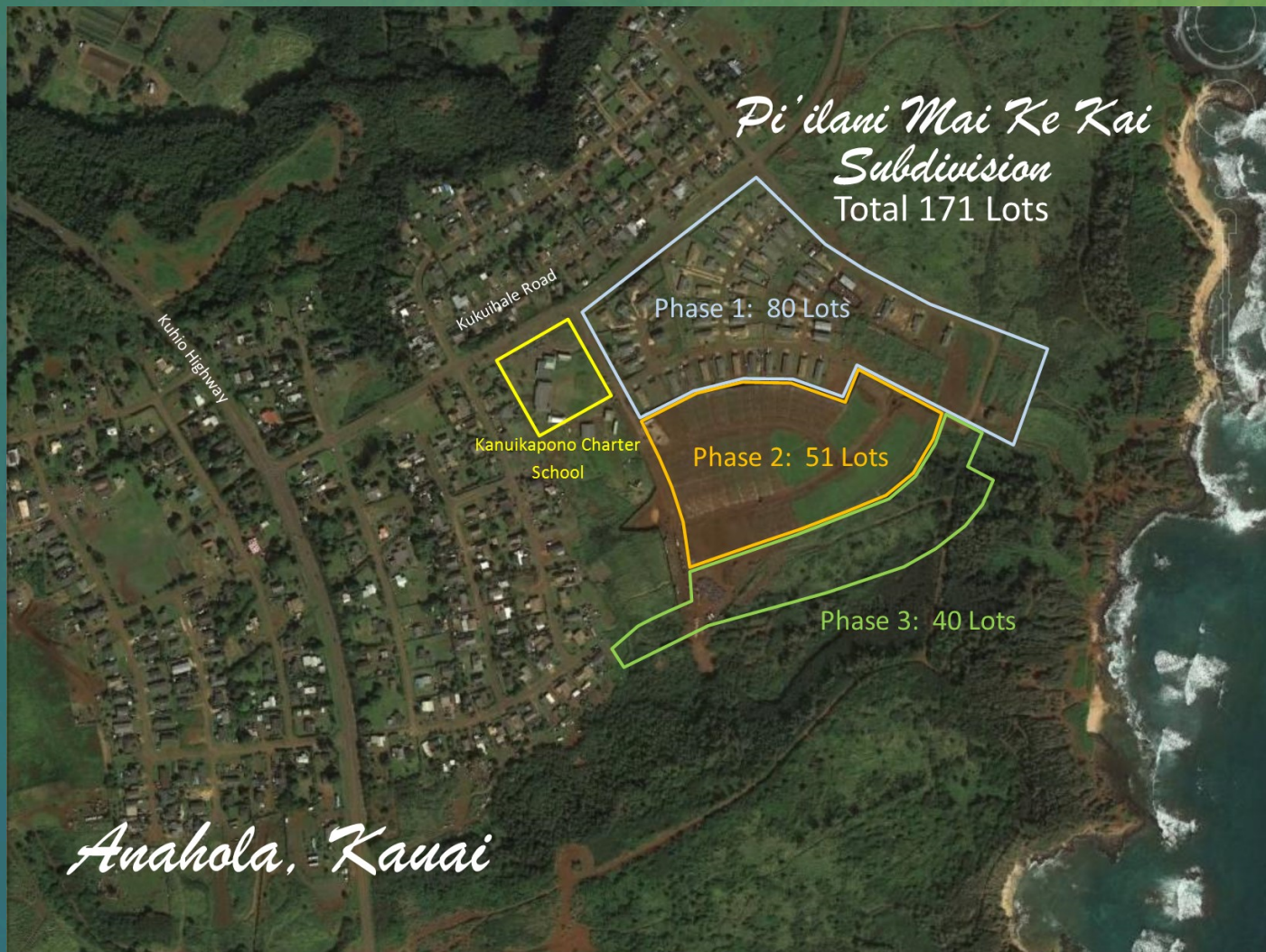
Anahola Farm Lots Water Tank Remediation



[illegible]

Pi'ilani Mai Ke Kai, Phase II

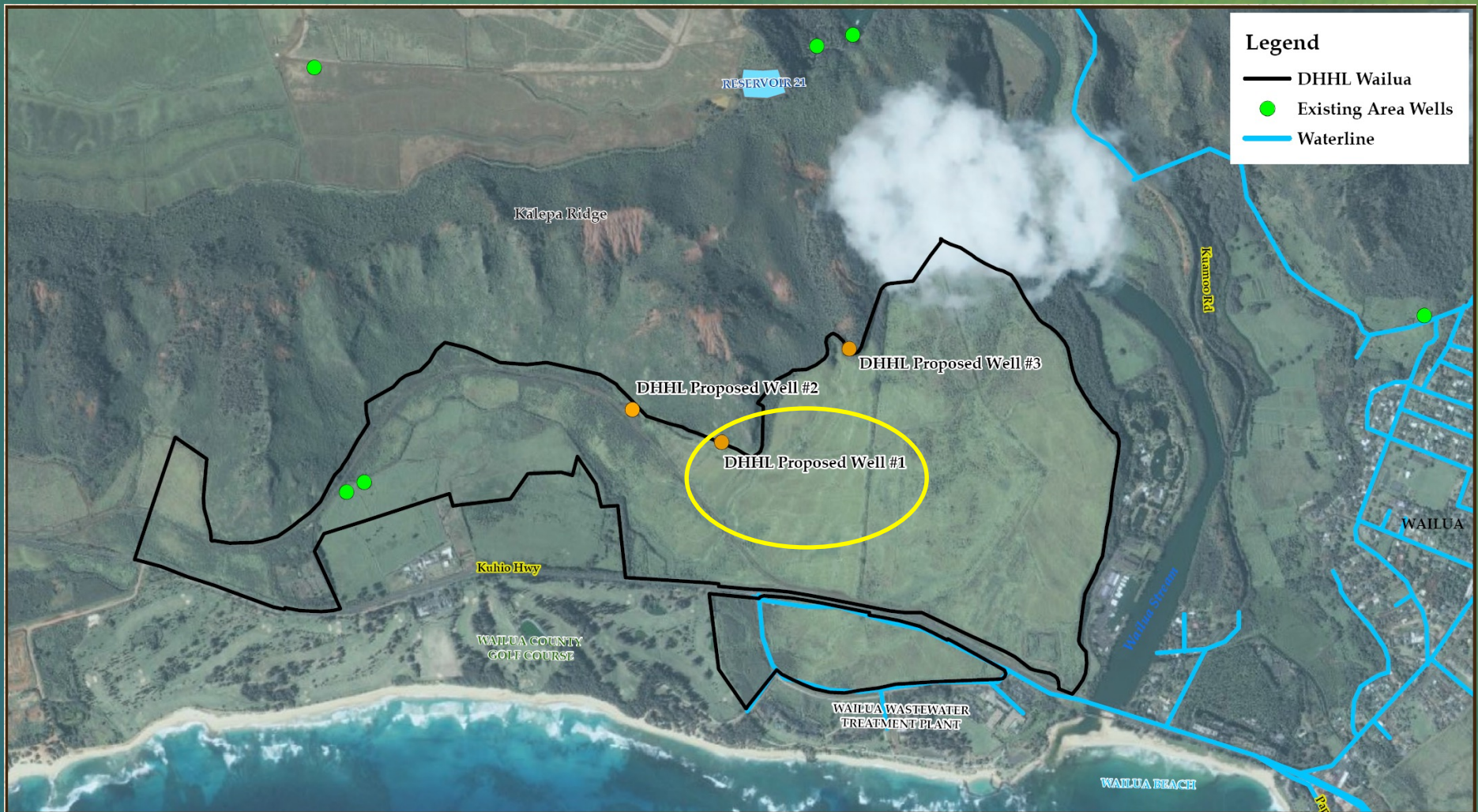
51 single-family residential lots finished



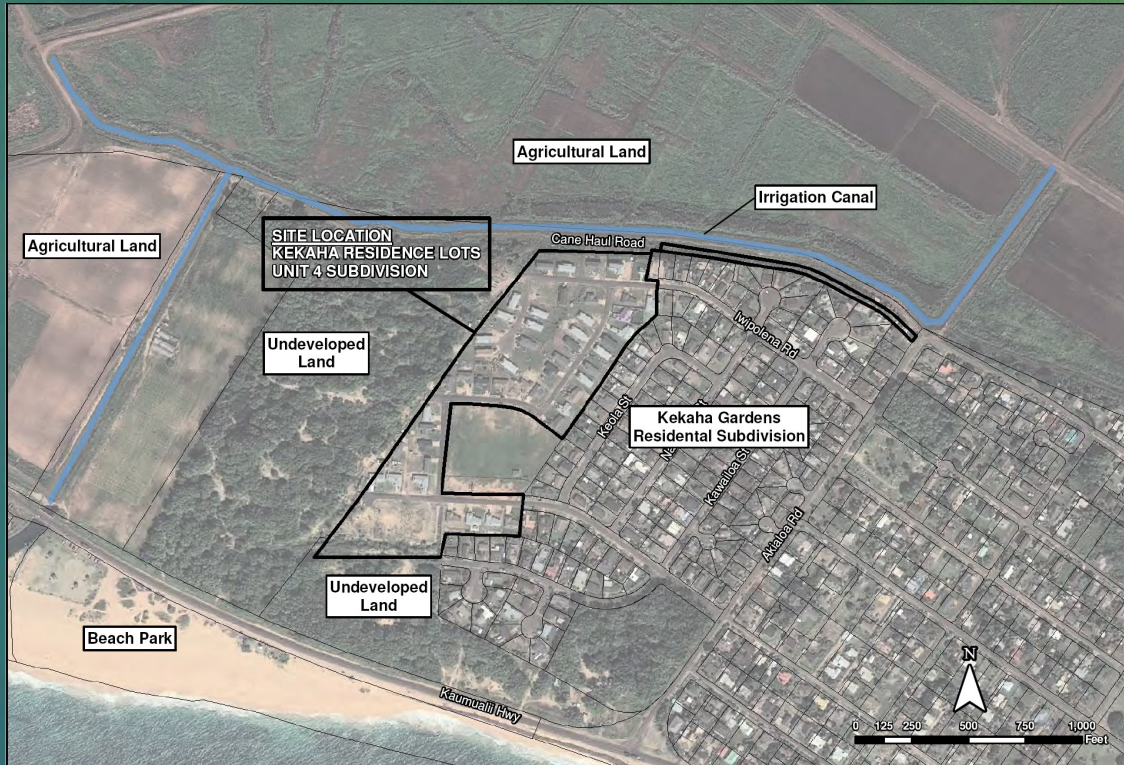
Undivided Interest in Anahola

- **19 Available Lots in Pi'ilani Mai Ke Kai, Ph. 1**
 - 51 lots soon to be made available in Pi'ilani Mai Ke Kai, Phase II
- **172 Undivided Interest Lessees in Anahola**
 - 56 UI lessees accepted PMKK home offering
 - 116 UI lessees remaining on the list
- **11 Offerings Made (to date)**
 - Includes turn key, self-help, owner-builder
 - Currently offering two self-help lots via Habitat
 - HALE Program working with Homeownership Hawaii to assess UI financial status

Wailua Well #1



Kekaha Environmental Assessment Reports



- Phase II Environmental Site Assessment completed Sept. 2015
- Next Steps:
 - Department of Health Review
 - Slope remediation, Lots 1 – 3
 - Environmental Hazard Management Plan for entire subdivision



HAWAIIAN HOME LANDS
HAWAIIAN HOMES COMMISSION
DEPARTMENT OF HAWAIIAN HOME LANDS

Homestead Community Updates



HAWAIIAN HOME LANDS
HAWAIIAN HOMES COMMISSION
DEPARTMENT OF HAWAIIAN HOME LANDS

Open House