

South Point Resource Management Plan

Community Meeting

July 29, 2015

6:30 p.m. to 8:30 p.m.



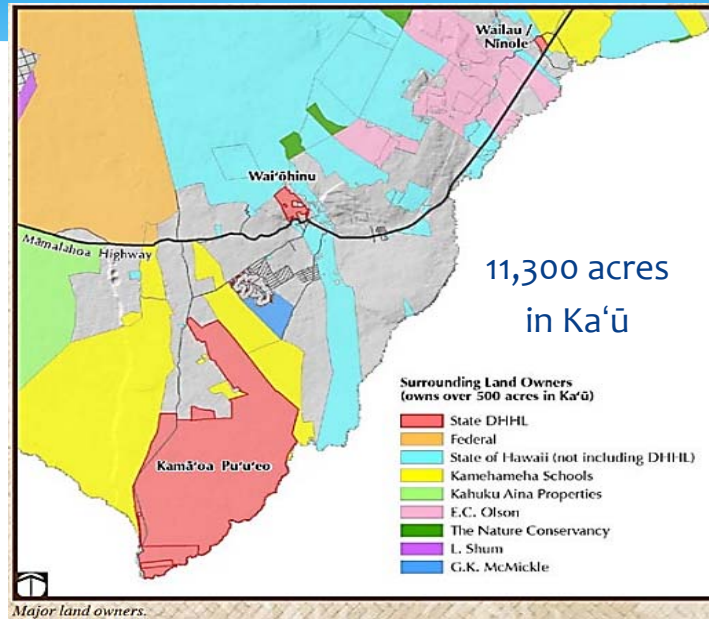
HAWAIIAN HOME LANDS TRUST
DEPARTMENT OF HAWAIIAN HOME LANDS

Agenda

- * Why are we doing this?
- * Current & Pending DHHL Land Dispositions at South Point
- * Introduction of Townscape, Inc.
- * Planning Process and Schedule

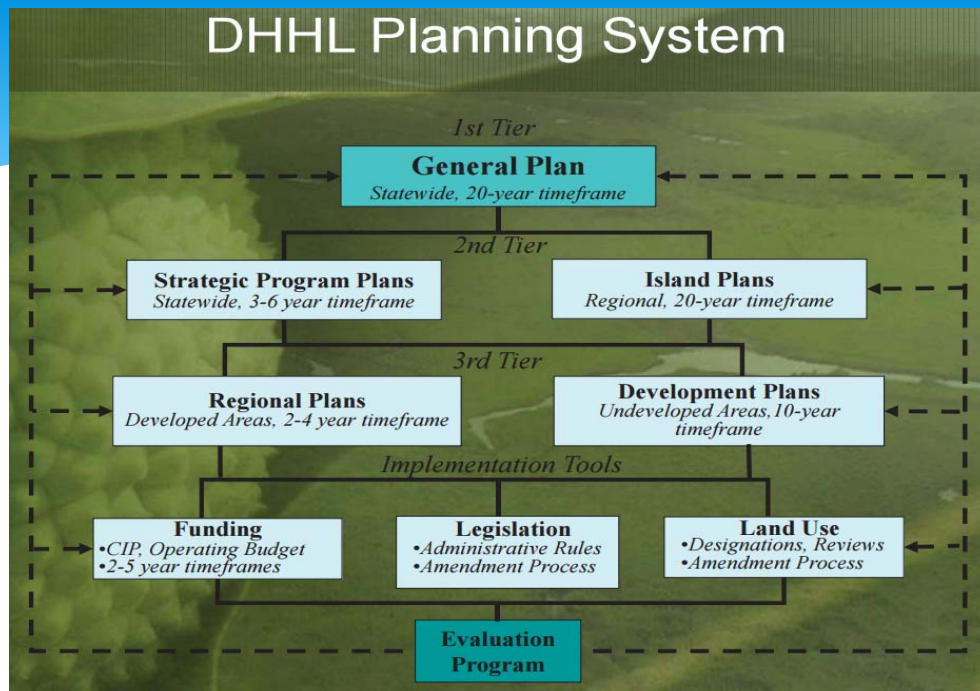


DHHL Lands in Ka'ū

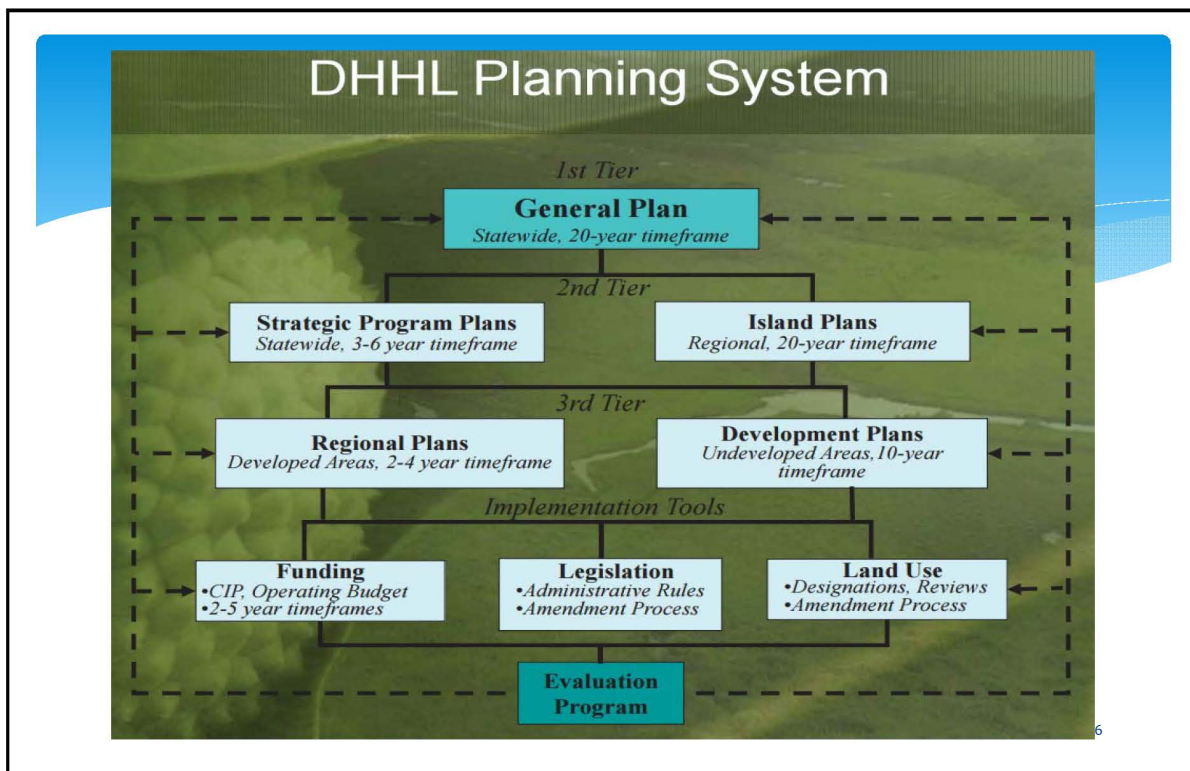
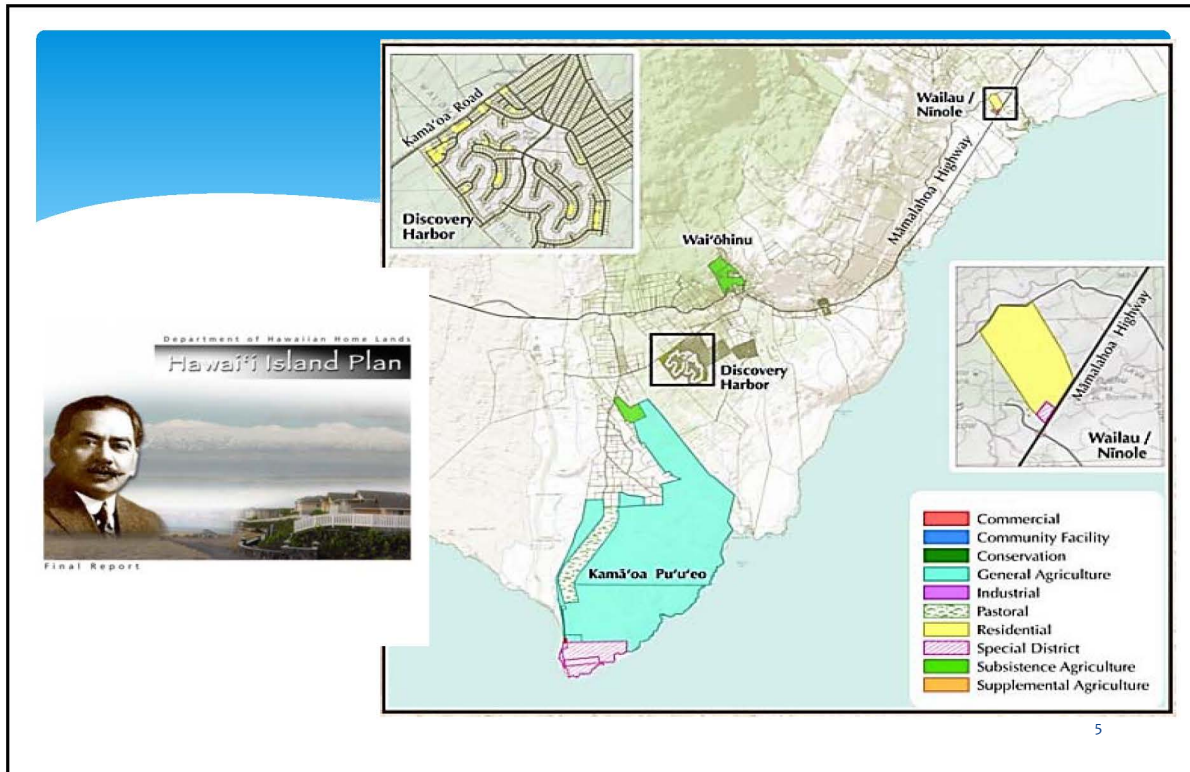


3

DHHL Planning System



4





DHHL Ka'ū Regional Plan Priority Projects

1. Support Development of Affordable Homestead Alternative in Ka'ū
2. Create a Ka'ū Homestead Community Association
3. Obtain Additional Water for Homestead Lots in Kamā'oa, Pu'u'eo, and Waiohinu
4. **Protect and Preserve Cultural Sites and Natural Resources in Kamā'oa**
5. Agricultural Homestead Leases at Waiohinu and Pursue Partnership with DLNR for Hawaiian Homesteading

Priority Project - Protect and Preserve Cultural Sites & Natural Resources in Kamā'oa

Phasing

It is anticipated that this project will be done in multiple phases.

- I. Organize Community
- II. Update the Historic Landmark Designation
- III. Develop Circulation Plan
- IV. Pursue Partnerships
- V. Develop Signage, Educational Programs
- VI. Obtain Funding
- VII. Construct roads, fencing, and educational signage

Cost

Update Historic Landmark Designation and Development of a Circulation Plan is anticipated to cost approximately \$65,000.

Collaboration

Ka'ū Community
 National Park Service - Hawai'i Volcanoes National Park
 National Park Service - Ala Kahakai National Historic Trail
 National Park Service - National Historic Landmarks Division
 National Park Service - Tribal Preservation Program
 Historic Preservation Grant programs
 University of Hawai'i
 Kamehameha Schools
 Hawaiian Home Lands Trust
 Department of Land and Natural Resources - Division of Forestry and Wildlife
 Native American Graves Protection and Repatriation Act



Boat ramp at Kaulana Bay



Entrance to Mahanā Bay



Mahanā Bay



Directions to sites frequented by visitors to Ka'ū



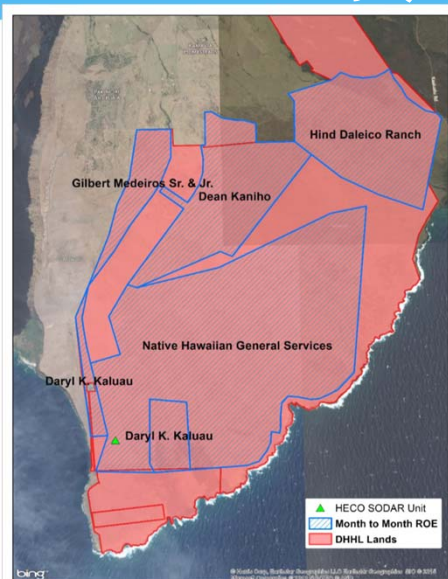
Historic Complex Marker



Palahemo

9

Current DHHL Month-to-Month Right of Entry (ROE) Permits



Permittee	Acres	Permitted Use
Hind Daleico Ranch	750	Pasture & Grazing
Gilbert Medeiros Sr. & Jr.	280	
Dean Kaniho	1,500	
Daryl K. Kaluau	450	
Native Hawaiian General Services	5,000	Wind Data Collection & Research
HECO	0.2	

Other Requests Received for Non-Homestead Use of DHHL Ka'ū Lands

Date	Short-Term Use Requests
Feb. 2015	Community Volunteer Day to Collect Rubbish and Litter Along the Coastline
July 2015	University of Alaska Unmanned Aircraft Research and Temporary Storage of Research Equipment

Date	Long-Term Use Requests
July 2012	Eco-Tourism
Dec. 2012	Eco-Tourism
March 2013	Curatorship of Cultural & Natural Resources
April 2013	Dry-land Kalo Farming

- * Note all **long-term** requests for non-homestead use of DHHL lands in South Point **will not** be acted upon until completion of this planning process.

11

Introduction of Townscape, Inc.

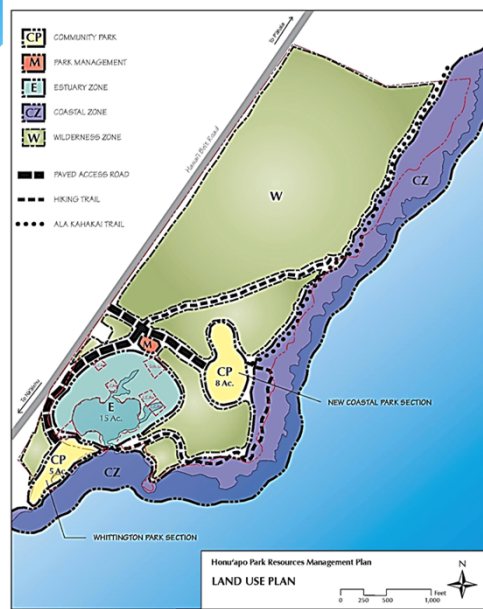
- * “Environmental and Community Planning”
- * Examples of prior projects:
 - * North Kohala Development Plan
 - * Honu‘apo Resource Management Plan
 - * Wai‘anae Sustainable Communities Plan (O‘ahu)



 **TOWNSCAPE, INC.**
Environmental & Community Planning

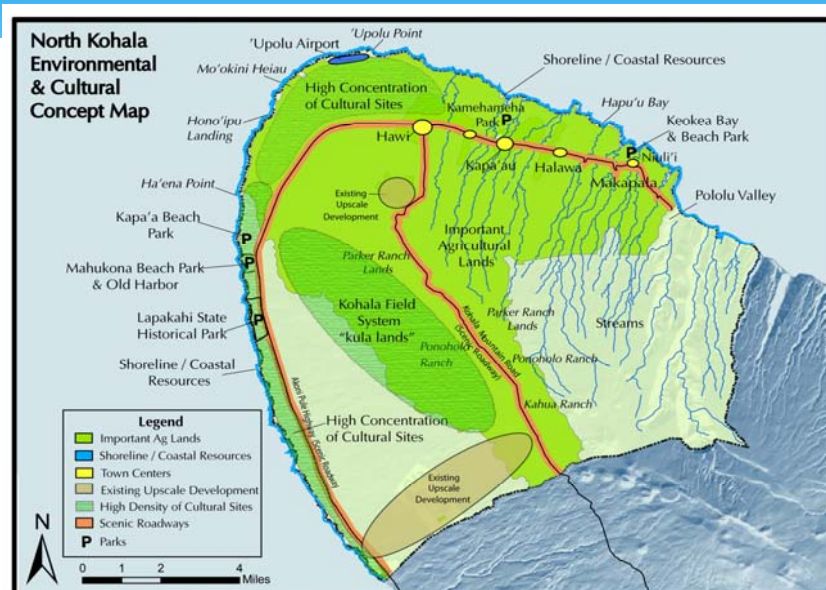
12

Honu'apo Resource Management Plan



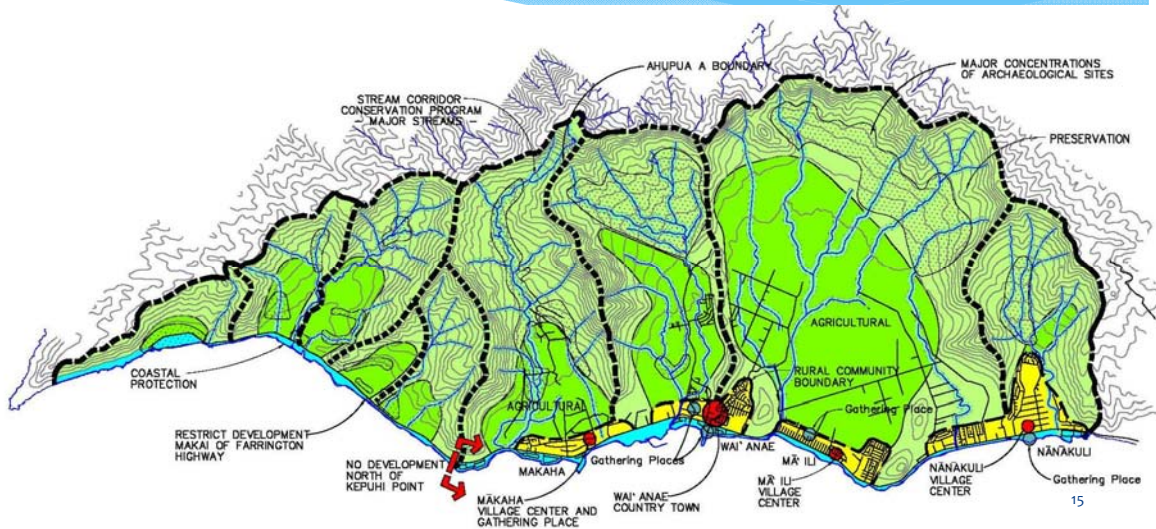
13

North Kohala Development Plan

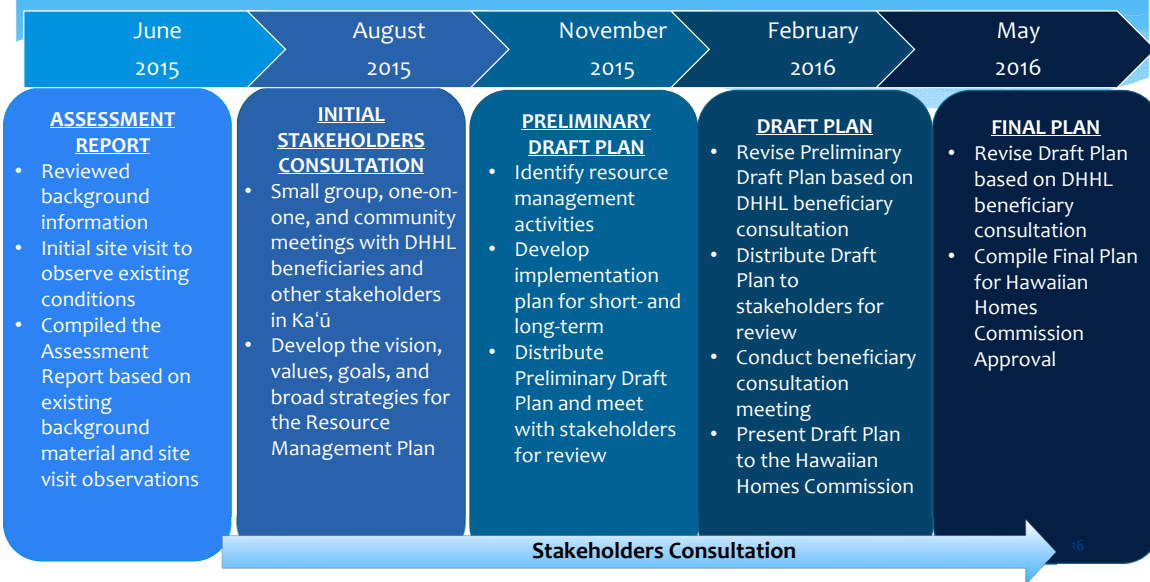


14

Wai'anae Sustainable Communities Plan (O'ahu)



Planning Process and Schedule



South Point Special Places



17

“Let’s come together to work together, to dream together, to create together.”



18

-10 minute break-

“What is your favorite personal memory and/or experience with South Point?”



19

<http://dhhl.hawaii.gov/po/special-area-plans/south-point/>

20