



HAWAIIAN HOME LANDS

HAWAIIAN HOMES COMMISSION

DEPARTMENT OF HAWAIIAN HOME LANDS

Kaua'i Community Meeting

October 27, 2014

Aston Aloha Beach Hotel Ali'i Room



HAWAIIAN HOME LANDS
HAWAIIAN HOMES COMMISSION
DEPARTMENT OF HAWAIIAN HOME LANDS

DHHL Update



HAWAIIAN HOME LANDS
HAWAIIAN HOMES COMMISSION
DEPARTMENT OF HAWAIIAN HOME LANDS

Chair's Message

2014 Initiatives

Based on concerns brought to the Hawaiian Homes Commission, issues that emerged from various beneficiary consultation processes and concerns shared at community meetings, the department identified several initiatives of interest to our native Hawaiian beneficiaries.

2014 Initiatives

- **Focus Area 1: Affordability**
- **Focus Area 2: Agriculture**
- **Focus Area 3: Natural Resources**
- **Focus Area 4: Financial Stability & Improved Operations**
- **Focus Area 5: Community Development**

Focus Area 1: Affordability

- HALE Program launch
- More options for families with new lease offerings
- “Rent with Option to Purchase” project in Kona (La‘i ‘Ōpua)

Focus Area 1: Affordability

Under Development -- Exploring How To

- “Ohana Zoning” allowing more than one unit on a residential lease
- Break in pricing for package homes (e.g. Honsador, HPM, etc.)
- Kupuna Rental Housing (Oahu)
- Assisted Living Facility (Molokai) – Pilot Project

Focus Area 2: Agriculture

- Use the land already developed
- Assessment of existing unawarded agricultural lands in DHHL's inventory

Under Development -- Exploring How To

- Partnerships with Department of Agriculture/
Agricultural Development Corporation

Focus Area 3: Natural Resources

- DHHL Water Policy
- Water Assessment Studies – Existing communities
- Water Rates Study (target summer launch)
- Assert DHHL's water rights
- Maui Energy Opportunities

Focus Area 4: Financial Stability & Improved Operations

- Clarification on county roles/responsibilities / Reduce burden on DHHL financial resources
- Increase earnings -- real estate assets
- Improve servicing for the beneficiary

Under Development -- Exploring How To

- Increase earnings – Financial assets

Focus Area 5: Community Development

- Evaluation of Kūlia and economic development grants
- Focused capacity building (due to limited funds)
- Native Hawaiian Development Program revisions – What is DHHL's role?



HAWAIIAN HOME LANDS
HAWAIIAN HOMES COMMISSION
DEPARTMENT OF HAWAIIAN HOME LANDS

Planning Office Update

Planning Office Update

- 1. Beneficiaries**
- 2. Lands**
- 3. Plans**
- 4. Planning Projects**

Native Hawaiian Beneficiaries

Applications

20,801 Residence
18,123 Agriculture
2,865 Pasture

KAUA'I	APPLICATIONS
Residential	1,556
Agricultural	2,172
Pastoral	281
TOTAL Kaua'i:	4,009

Lessees

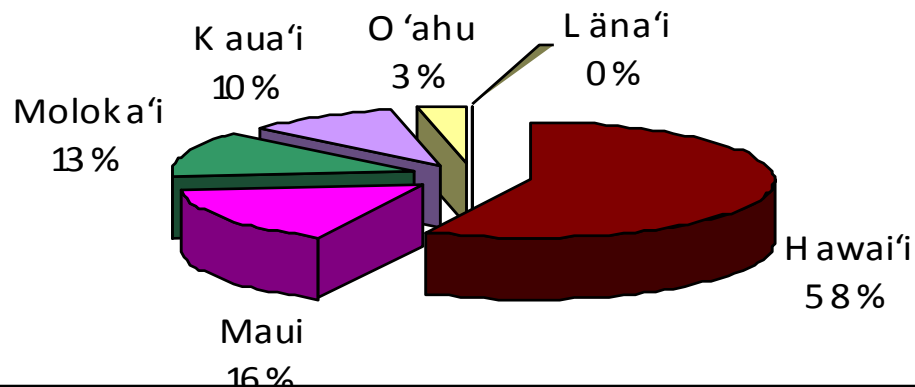
8,328 Residence
1,101 Agriculture
408 Pasture

KAUA'I	LESSEES
Residential	700
Agricultural	46
Pastoral	1
TOTAL Kaua'i:	747

Our Lands...

DHHL Statewide Inventory

Hawaiian Home Lands Trust
Percent Acres by Island



■ Hawai'i ■ Maui ■ Moloka'i ■ K au a'i ■ O 'ahu ■ L āna'i

ISLAND	ACRES
Hawai'i	117,551
Maui	31,904
Moloka'i	25,748
Kaua'i	20,575
O'ahu	8,154
Lāna'i	50
TOTAL	203,982

Kaua'i Island Plan

- Recommends future uses on 20,565 acres of Hawaiian Home Lands on Kaua'i
- Guides overall land use patterns & development on Kaua'i for the next 20 years
- Three priority tracts for development: residential areas of Wailua, Hanapēpē, and Anahola/Kamalomalo'o

KAUA'I ISLAND PLAN

May 2004

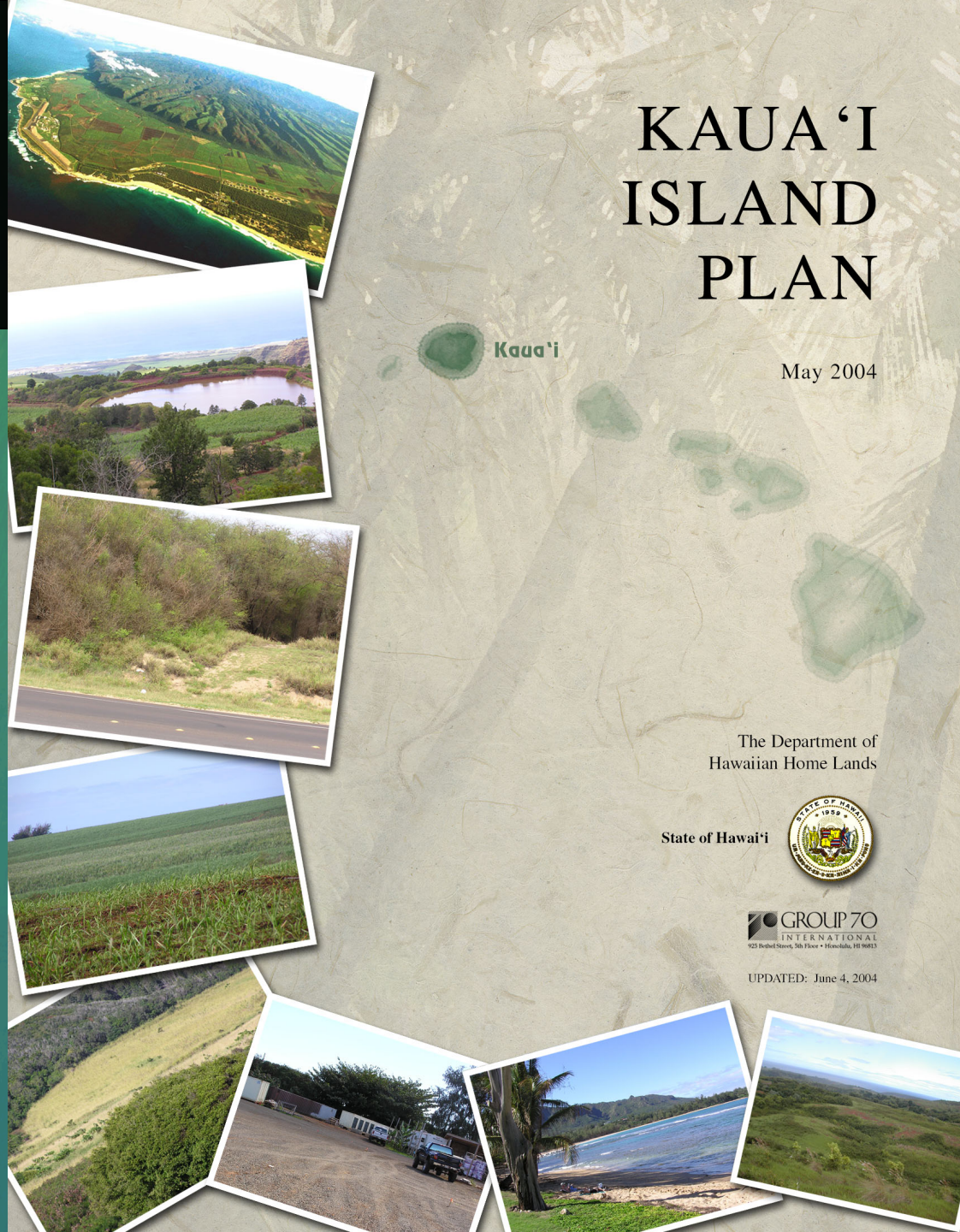
The Department of
Hawaiian Home Lands

State of Hawai'i



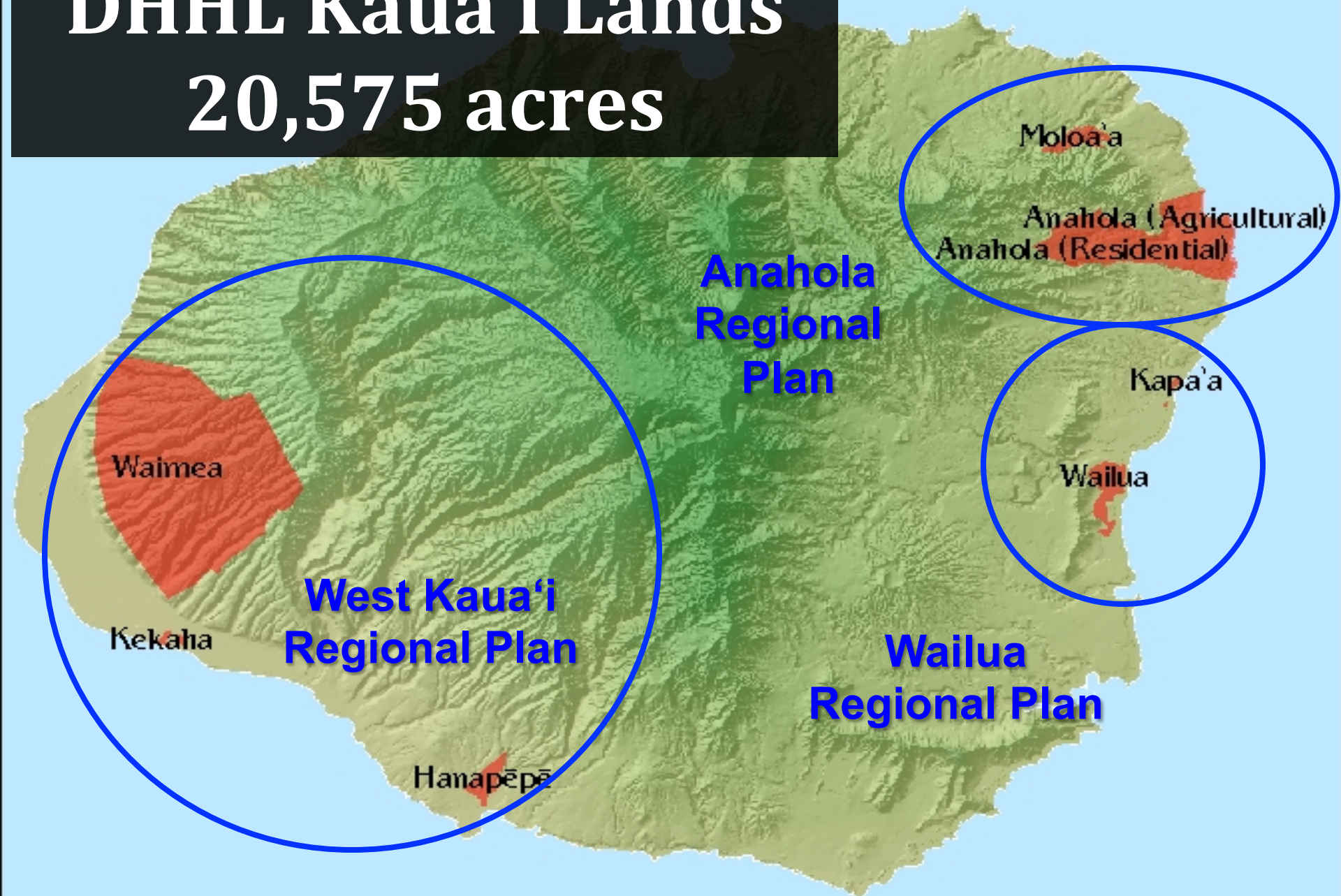
GROUP 70
INTERNATIONAL
925 Bedford Street, 5th Floor • Honolulu, HI 96813

UPDATED: June 4, 2004



DHHL Kaua'i Lands

20,575 acres



WAILUA



REGIONAL PLAN

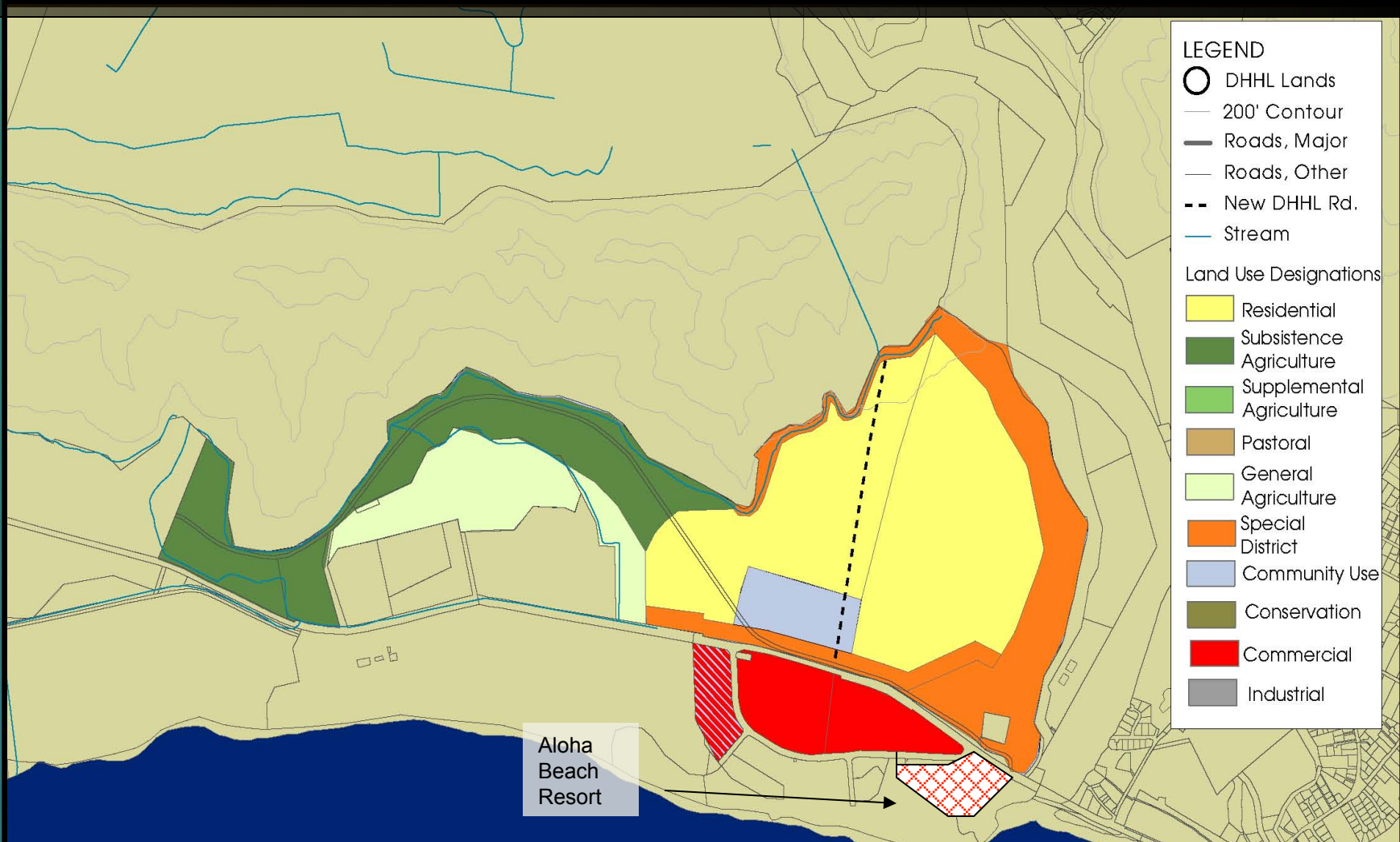
December 2009



- Originally Approved in June 2007
 - Updated in December 2009
 - Land Area: 545 acres
- Most Preferred Location for Residential Homesteading
 - Development Focus: Secure Water Source

DHHL Wailua Lands

- Wailua lands are approximately 545 acres (3 percent of Kaua'i lands)
- Aloha Beach Resort conveyed to DHHL – approximately 10 acres.
- All vacant land; wetland area
- Exploratory Wells revealed water source on-site—we're currently encasing the new well for future use.



ANAHOLA

KAMALOMALO'O, ANAHOLA, MOLOA'A



REGIONAL PLAN

June 2010



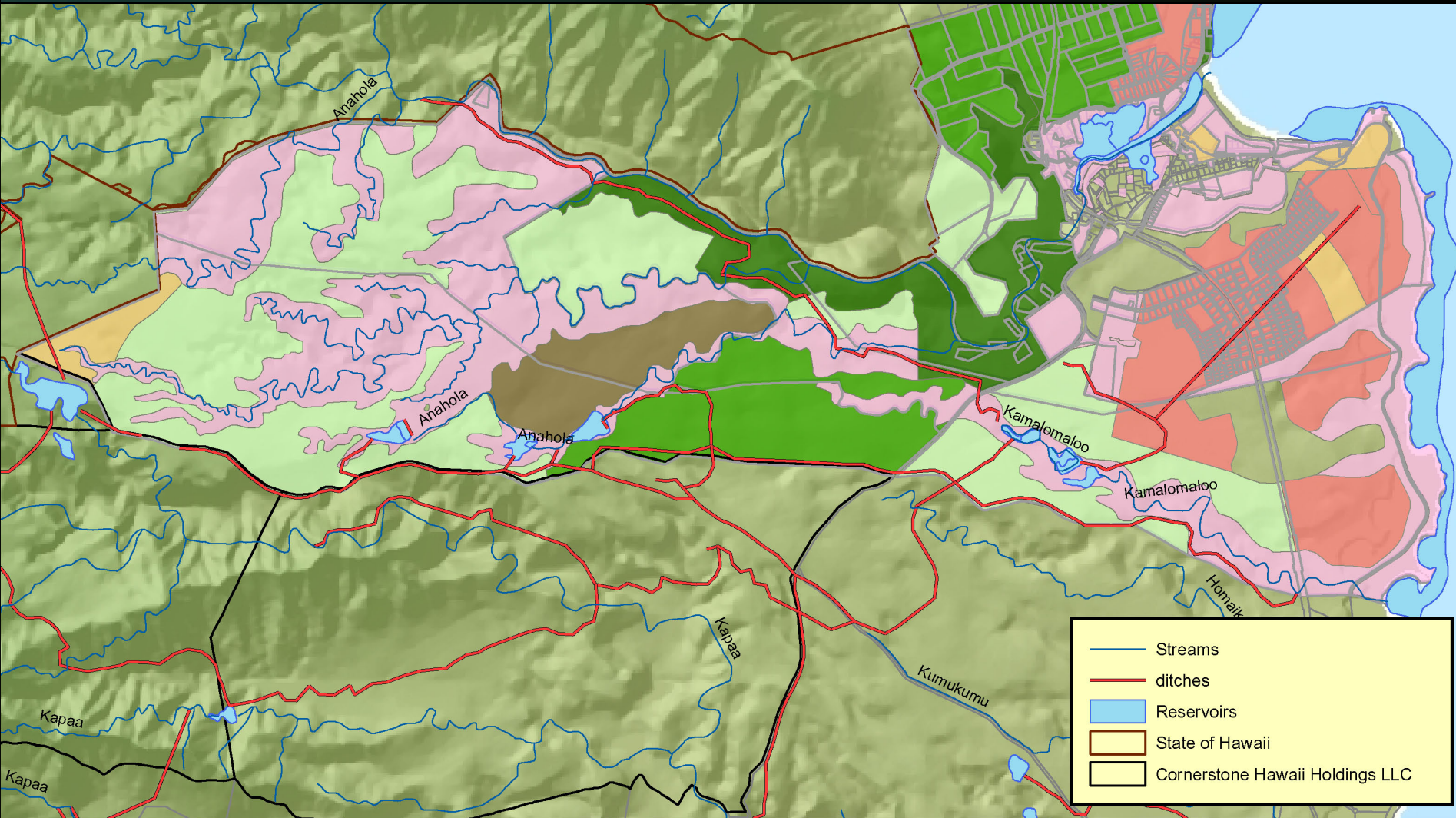
- Originally Approved in June 2007
 - Updated in June 2010
- Land Area: 4,228 acres – Anahola; 316 acres – Moloa'a
 - Anahola Town Center Plan
- Development Focus: Pi'ilani Mai Ke Kai

DHHL Anahola Lands

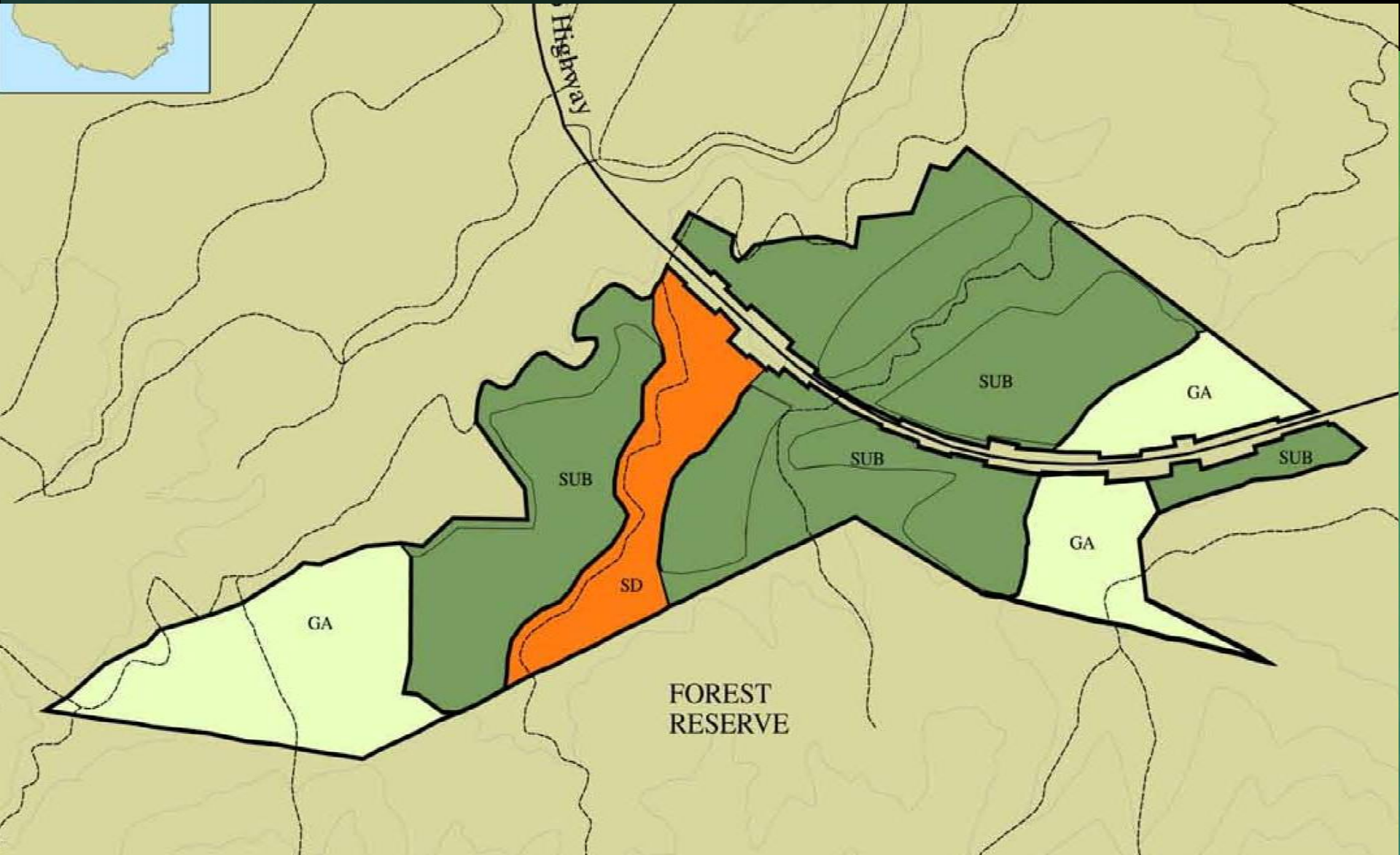
- Approximately 4,500 acres
(21 percent of Kauaʻi lands)
- 267 acres Subsistence Agriculture

Anahola Homesteads

- 535 Residential & 46 Agriculture Lessees
- On Deck: Piʻilani Mai Ke Kai



Moloa'a Land Use Designations



WEST KAUA'I

(Waimea, Kekaha, Hanapēpē)



REGIONAL PLAN

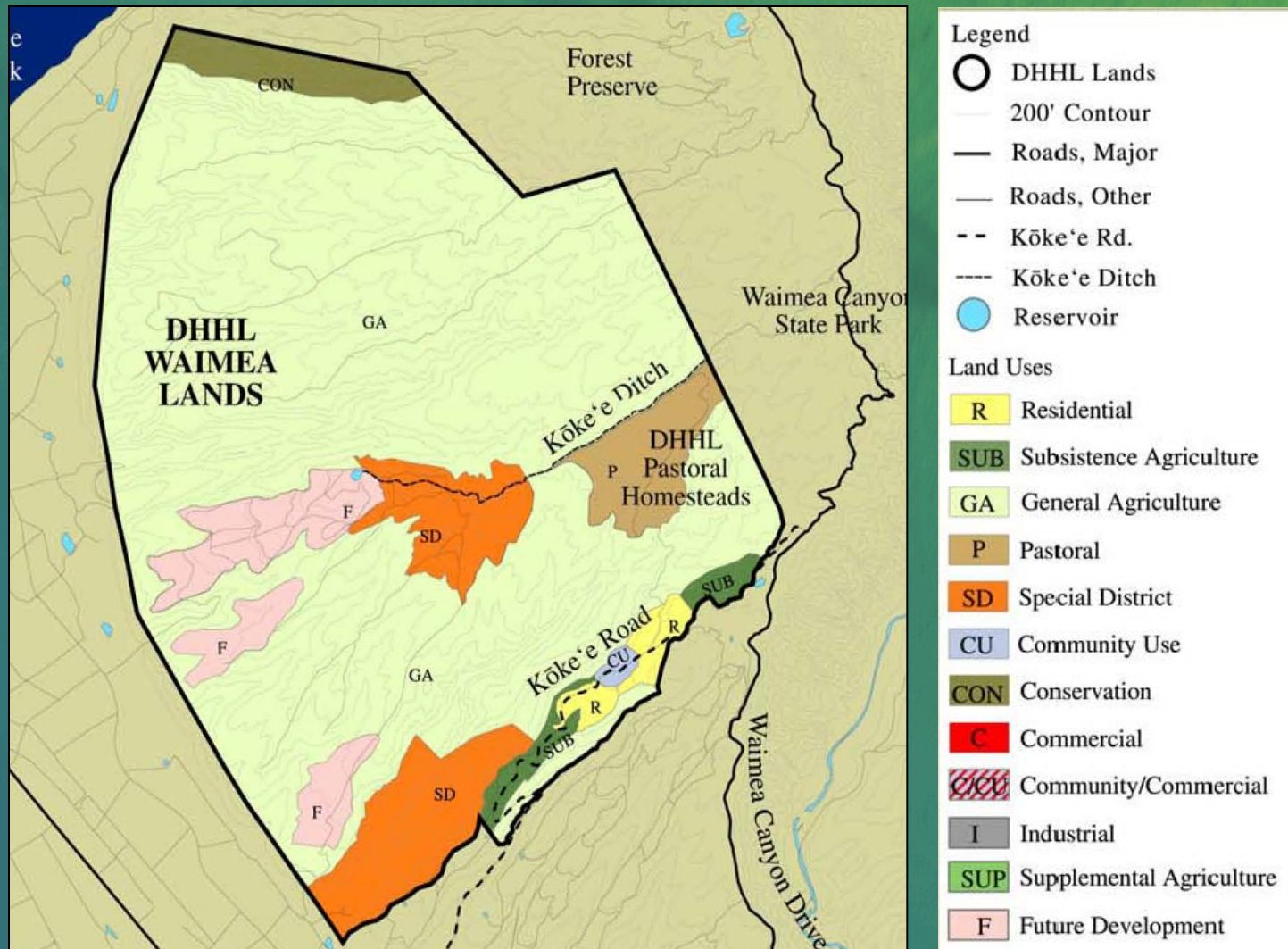
February 2011



- Approved in June 2011
- Land Area: 15,061 acres – Waimea; 52 acres – Kekaha; 365 acres – Hanapēpē
- Development Focus: Ag, Water & Energy

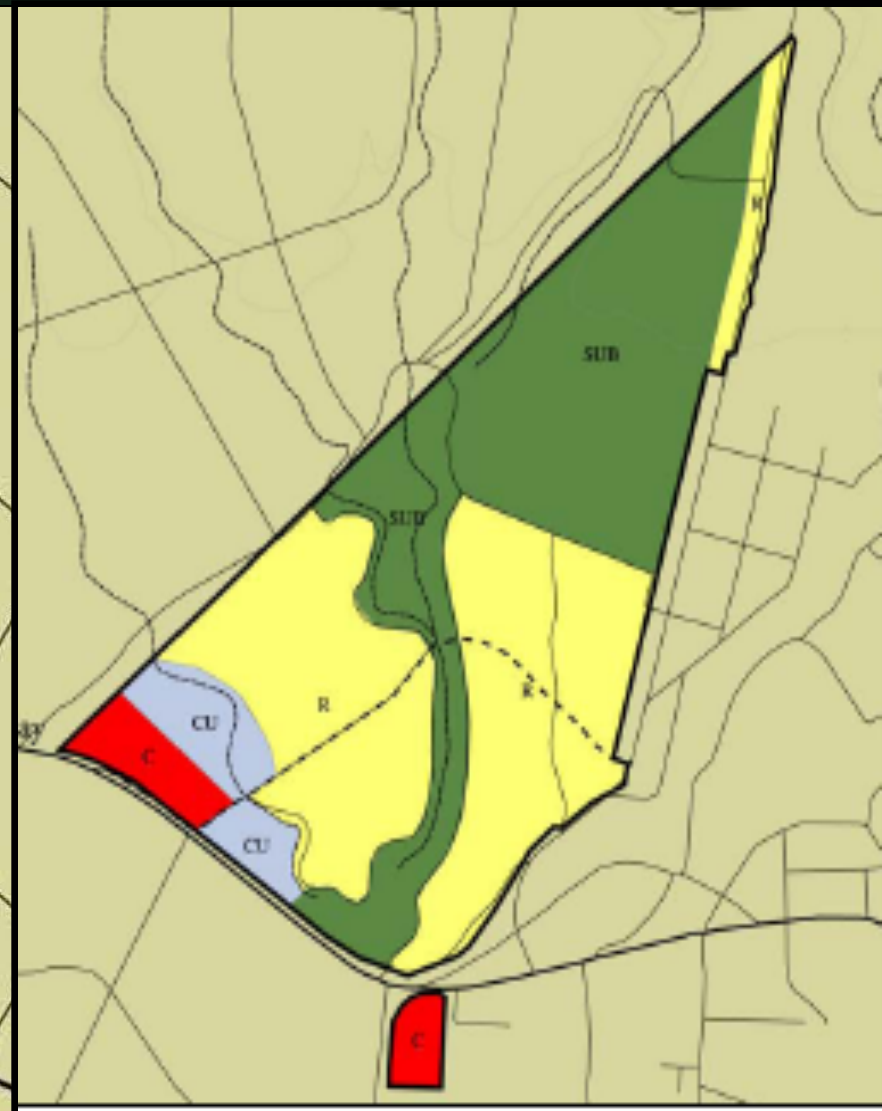
DHHL West Kaua'i Lands

- Approximately 15,061 acres
(75 percent of Kaua'i lands)
- 1 Pastoral Lessee - Waimea
- DOFAW Game Management



West Kaua'i Homesteads

- 117 Residential – Kekaha
- 46 Residential – Hanapepe
- Kekaha Enterprise Center



Coastal Zone Management Sea Grant Extension Agent

- **Ruby Pap, UH Sea Grant**
 - Coastal Land Use Extension Agent based on Kaua'i, in County Planning Department Office
 - Provides technical assistance and education to beneficiaries and DHHL
- **Contact info:**
(808) 241-4183
rpap@hawaii.edu

Planning Office Projects

- O'ahu Island Plan – adopted in July
- Water Policy Plan – adopted in July
- Agriculture Program Plan
 - Agriculture Program Plan research - underway
 - Ag Peer to Peer Grant Program - underway
- SMS Statewide Survey
 - Mailed out to all Beneficiaries in August
 - Telephone Survey October/November - underway
- State Office of Planning Study
 - Economic Development Strategies for Native Hawaiian Communities - underway



HAWAIIAN HOME LANDS
HAWAIIAN HOMES COMMISSION
DEPARTMENT OF HAWAIIAN HOME LANDS

Land Development Division Update

Pi'ilani Mai Ke Kai, Phase II

51 single-family residential lots finished



Undivided Interest in Anahola

- **19 Available Lots in Pi'ilani Mai Ke Kai, Ph. 1**
 - 51 lots soon to be made available in Pi'ilani Mai Ke Kai, Phase II
- **172 Undivided Interest Lessees in Anahola**
 - 56 UI lessees accepted PMKK home offering
 - 116 UI lessees remaining on the list
- **11 Offerings Made (to date)**
 - Includes turn key, self-help, owner-builder
 - Currently offering 5 self-help lots via Habitat
 - Most lessees don't want the lot or cannot qualify
 - New HALE Program to target UI needs



HAWAIIAN HOME LANDS
HAWAIIAN HOMES COMMISSION
DEPARTMENT OF HAWAIIAN HOME LANDS

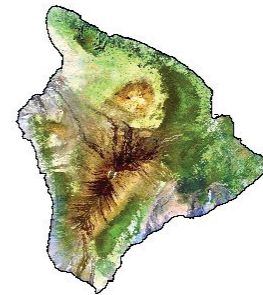
NHHBG Update

Native Hawaiian Housing Block Grant Statewide



**-\$9.7 million to be spent on
NAHASDA-Financed units**

**- \$29.8 million to be spent
on Infrastructure and new
units (CIP)**



HALE Program

- In Hawaiian, *hale* means “house”
- Department chose “HALE” as the name of its program to assist eligible applicants/lessees in the following areas:

<u>Risk Mitigation</u>	<u>Loss Mitigation</u>
•Homebuyer education	•Lease cancellation prevention
•Assists borrowers to qualify	•Keeps families in their homes

- HALE emphasizes *kuleana* in terms of financial behavior
- HALE promotes applicant/lessee empowerment
- Request for Proposals issued for service providers on Hawai‘i, Kaua‘i, and O‘ahu
- Upcoming RFP for Maui, Moloka‘i and Lāna‘i

HALE Timeline for Anahola

September 2013

Survey of undivided interest lessees
to get a sense of applicant families financial readiness

April 2014

Request for proposals issued for
Risk Mitigation services for Kauai

May – September 2014

Service provider selection, contracting

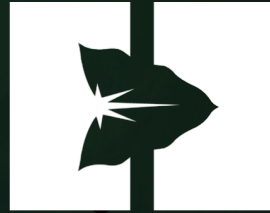
December 2014

Service provider tentative start



HAWAIIAN HOME LANDS
HAWAIIAN HOMES COMMISSION
DEPARTMENT OF HAWAIIAN HOME LANDS

Homestead Community Updates



HAWAIIAN HOME LANDS
HAWAIIAN HOMES COMMISSION
DEPARTMENT OF HAWAIIAN HOME LANDS

Open House

Community Organizations

- Department of Commerce & Consumer Affairs
- Hawai'i Senior Medicare Patrol
- Hawaiian Community Assets
- Ho'ola Lāhui Hawai'i
- Office of Hawaiian Affairs
- Sandwich Isles Communications
- University of Hawaii Sea Grant College Program
- U-Turn For Christ Kaua'i
- Waiwai O Waiawa