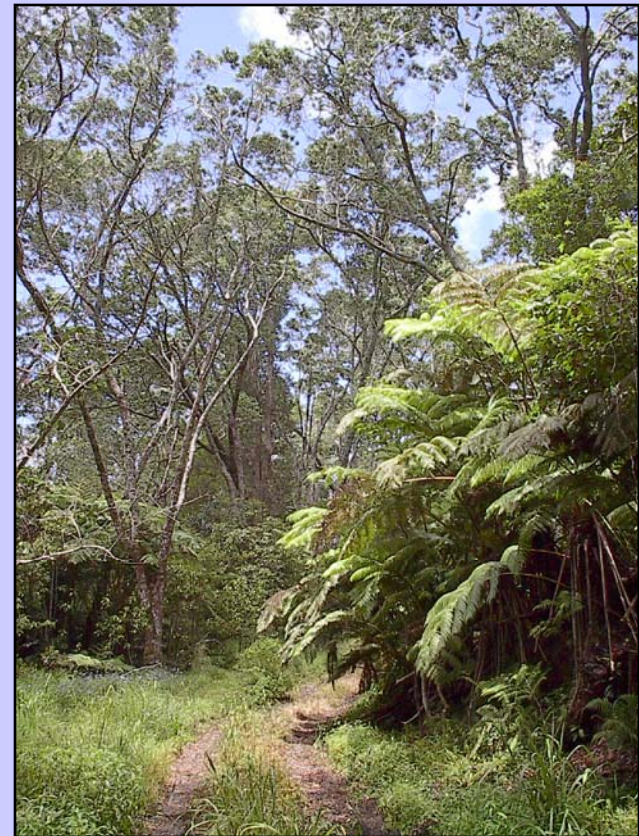


Department of Hawaiian Home Lands Beneficiary Consultation

‘Āina Mauna Legacy Program

Demonstration Game Management Pilot Project



July 5 & 8, 2013



Agenda

- I. Pule and Introductions** *(5 min)*
- II. Purpose of Beneficiary Consultation** *(5 min)*
- III. Presentation of Pilot Project** *(30 min)*
- IV. Open Discussion** *(45 min)*
- V. Next Steps and Closing** *(5 min)*

Achieving the DHHL mission through land management

“Our mission is to manage the Hawaiian Home Lands Trust effectively, and to develop and deliver land to native Hawaiians. We will partner with others towards developing self-sufficient and healthy communities.”

‘Āina Ho`opulapula - "From the Land, We Flourish"

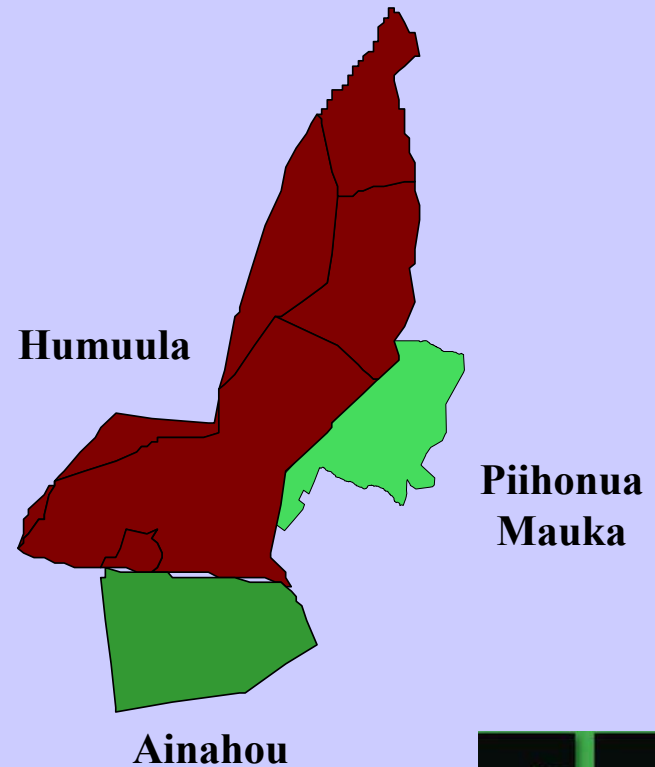
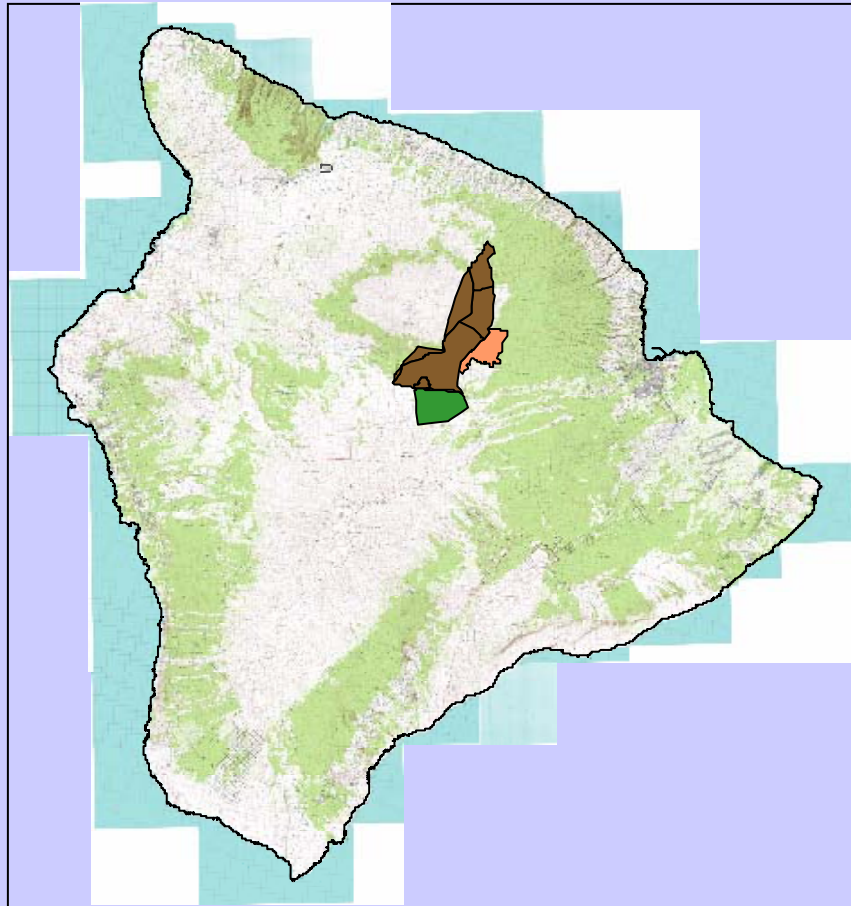
Three Goals tonight:

- **Briefly review the Āina Mauna Legacy Program**
- **Describe the proposed Demonstration Game Management Pilot Project**
- **Get beneficiary feedback and mana‘o**



‘Āina Mauna

(aka Ainahou/Humu`ula/Pi`ihonua Mauka)

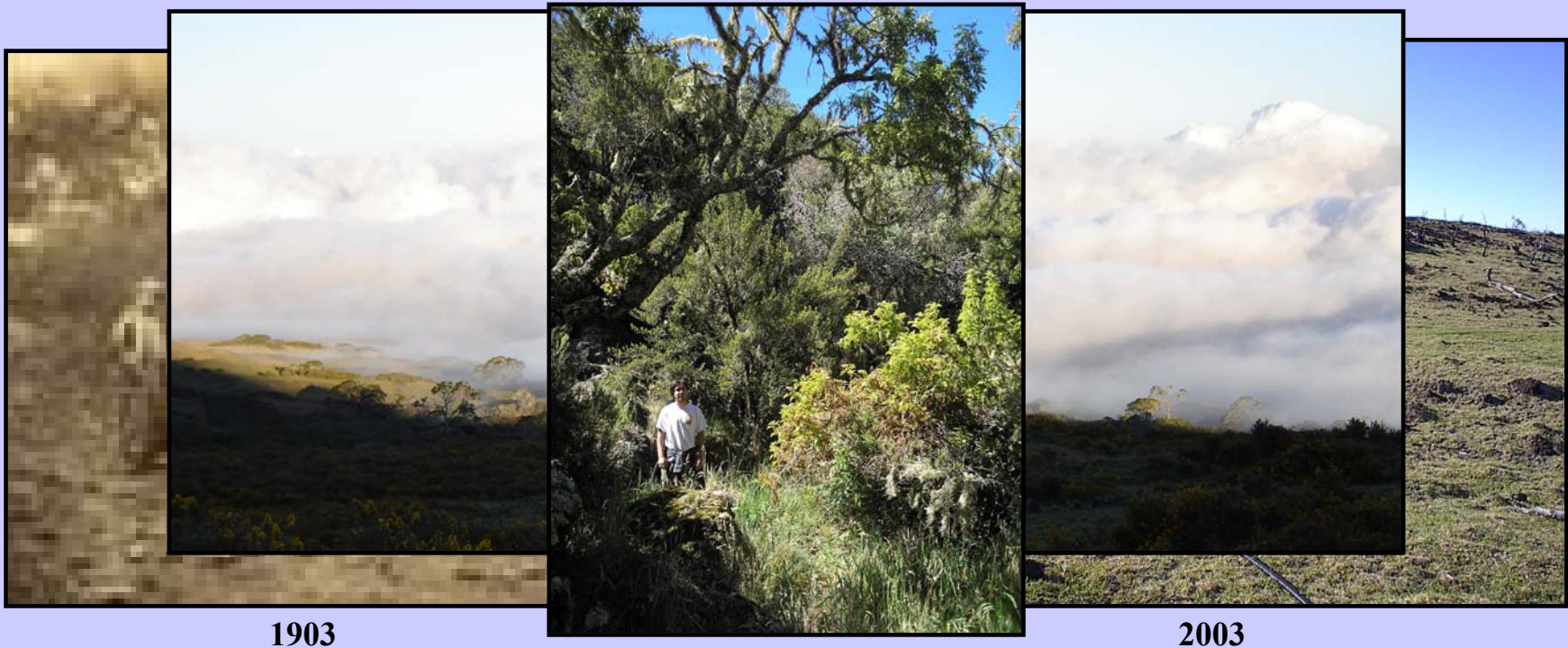


'Āina Mauna Legacy Program

Approved by Hawaiian Homes Commission on December 15, 2009

Three Primary Goals
for a **56,000 acre** contiguous parcel on the Big Island

Restore the land's productivity;



‘Āina Mauna Legacy Program

Approved by Hawaiian Homes Commission on December 15, 2009

Three Primary Goals
for a **56,000 acre** contiguous parcel on the Big Island

Be economically self-sustaining;



'Āina Mauna Legacy Program

Approved by Hawaiian Homes Commission on December 15, 2009

Three Primary Goals
for a **56,000 acre** contiguous parcel on the Big Island

Involve beneficiaries



‘Āina Mauna Legacy Program



**Feral Sheep
Management**



‘Āina Mauna Legacy Program



**Feral Sheep
Management**



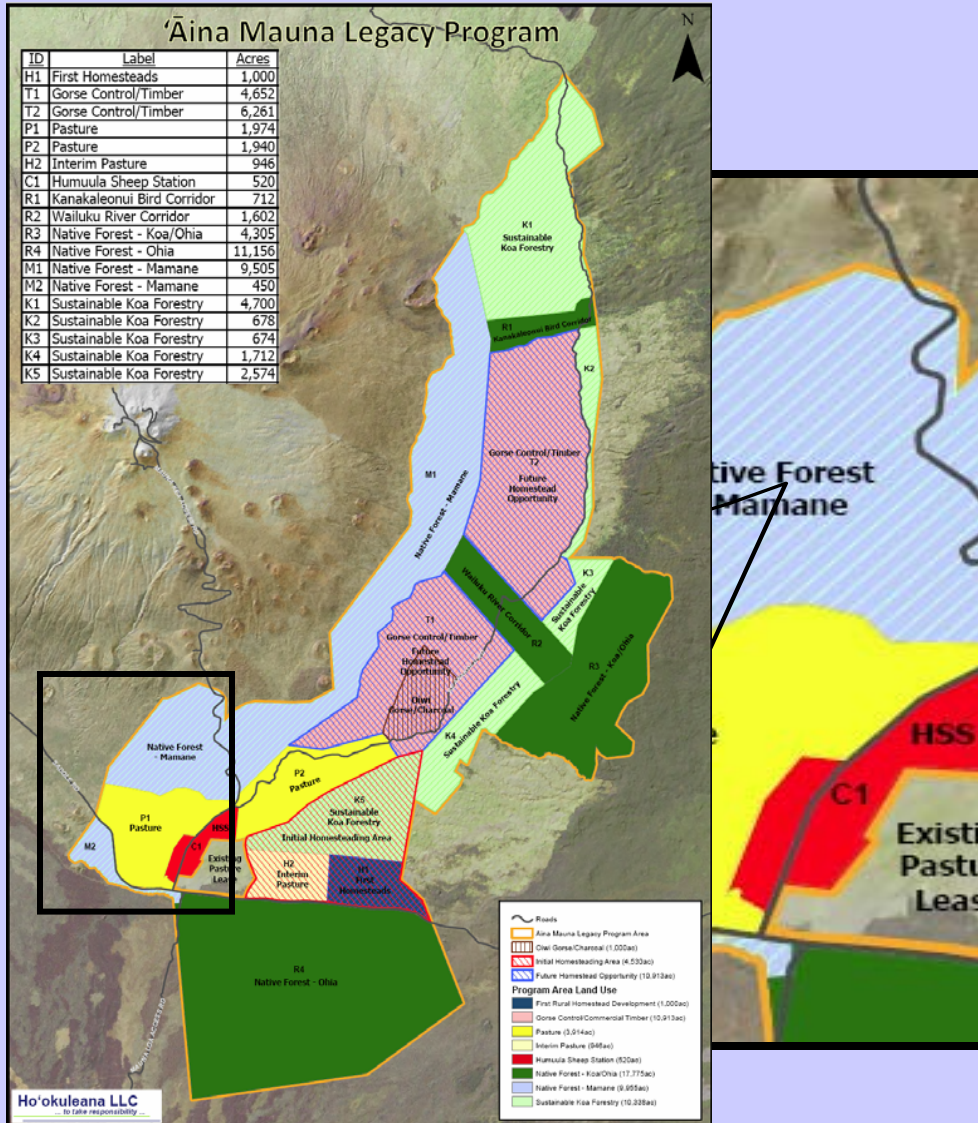
‘Āina Mauna Legacy Program

Projected Herd Increase if Unmanaged

UNHUNTED:	2010	2011	2012	2013	2014	2015	2016	2017	2018	2019
Herd size	347	477	656	903	1,242	1,709	2,352	3,236	4,453	6,127

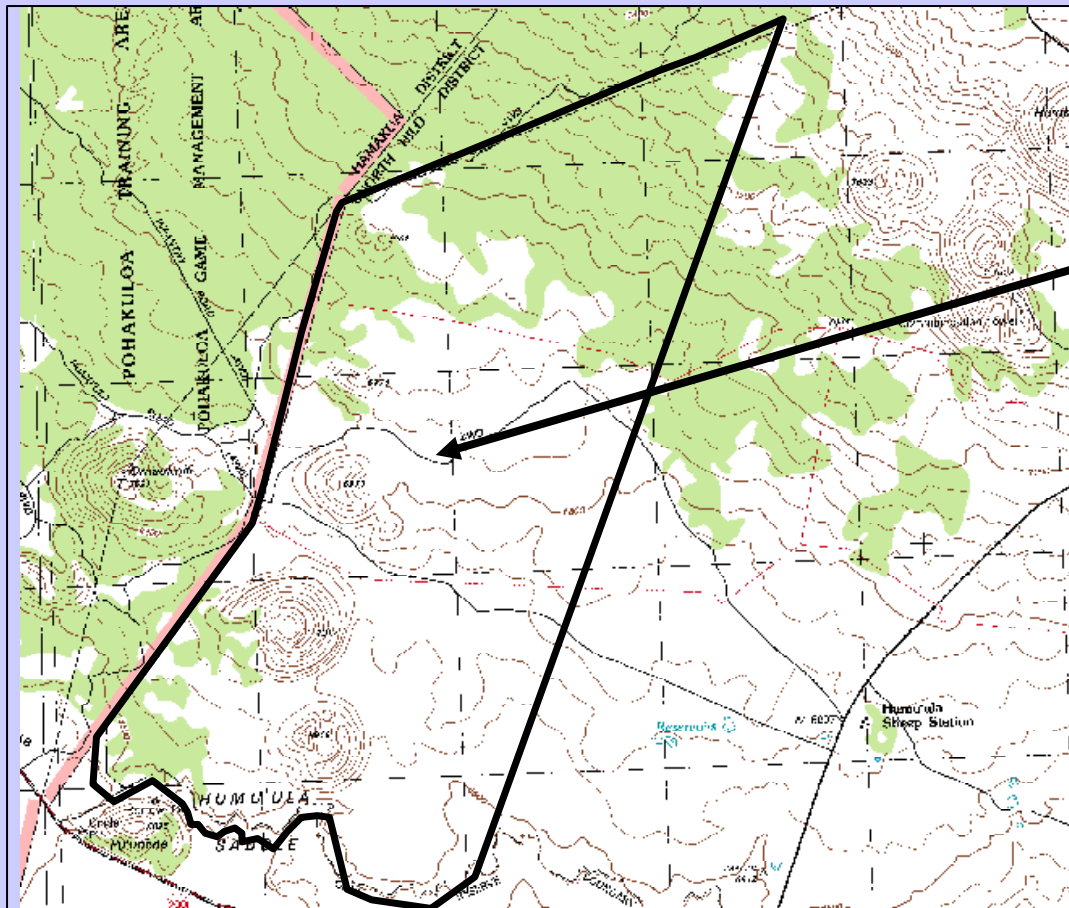


'Āina Mauna Legacy Program



Demonstration Game Management

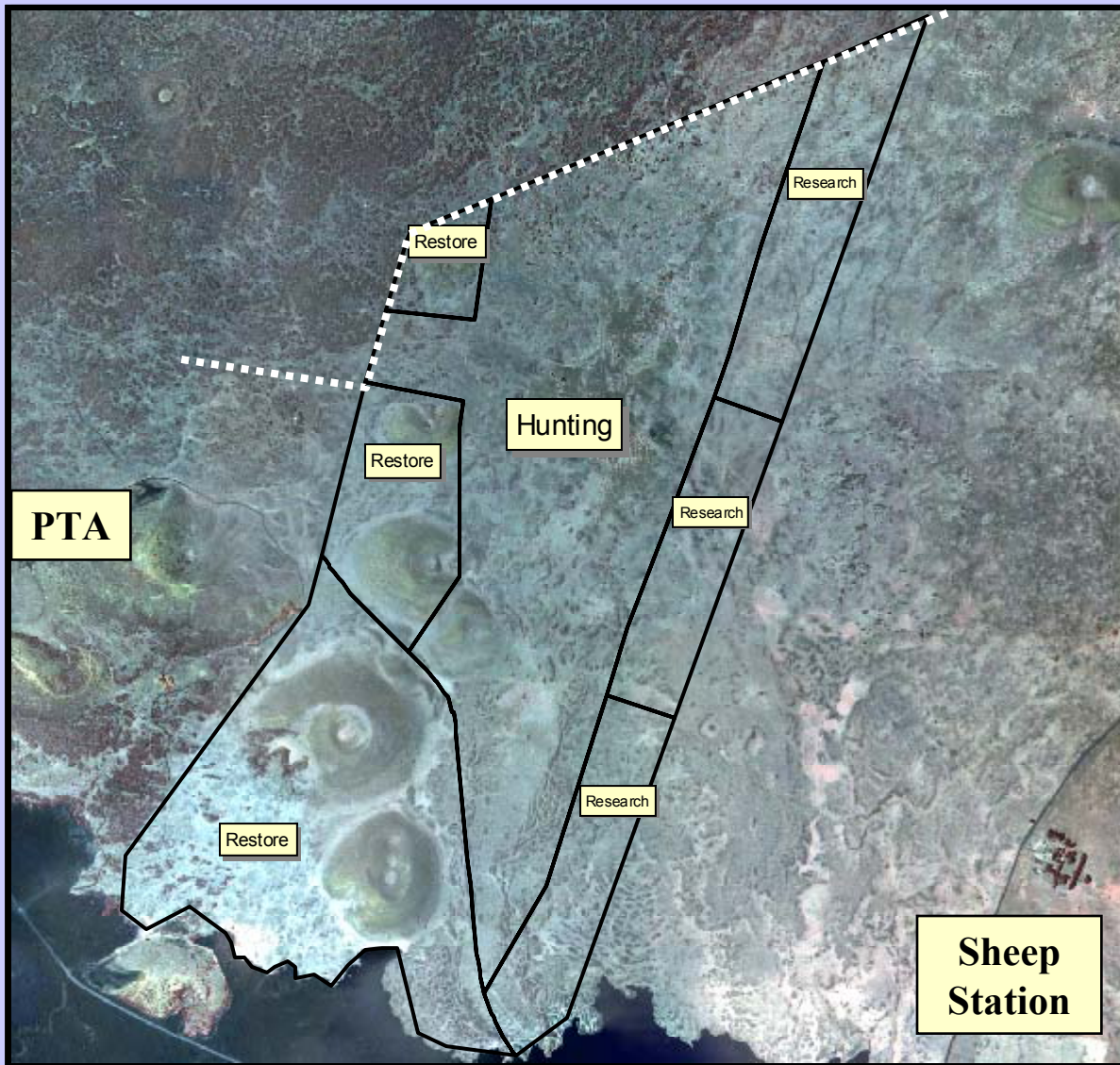
‘Āina Mauna Legacy Program



1,560 acres total



‘Āina Mauna Legacy Program



1,560 acres

Hunting – 694 acres

Puu Restoration – 543 acres

Grazing Studies – 323 acres

Existing Fence –



Demonstration Game Management Project Advisory Group formed in 2012

Four Sub-committees:

- Recreation (aka Hunting)
- Restoration
- Research
- Revenue



‘Āina Mauna Legacy Program

Project as Proposed to Date:

Recreation/Hunting

- Archery only, youth will be taught archery skills and hunting “ethics”
- Youth 10 to 17 must be accompanied by an adult
- All hunters must take a hunter safety class and have a valid hunter license
- Qualifying hunters are entered into a lottery and selected for a season
- Seasons could be about 8-15 days and might include 2 weekends



‘Āina Mauna Legacy Program

Project as Proposed to Date:

Restoration

- Native plants primarily, emphasis on iliahi, ikoko, and mamane first
- Paid crew of about 3-4 and volunteer groups of about 10-12
- Hunters could “give back” by planting during day, hunting early and late

Research

- How many sheep can the land support?
- How can the herd be improved, e.g. taking the worst and leaving the best
- Use about 50 to 100 sheep in up to 20 paddocks over 3 years
- Can sheep be “trained” to focus on non-natives?





Prescribed grazing of sheep helps native ecosystem recover function and service in Humu`ula, Hawai`i?



Kealohanuiopuna M. Kinney

The problem

•Erosion

Humu`ula pu`u show the effects of overgrazing



•Invasive plants

Senecio madagascariensis (Fireweed)



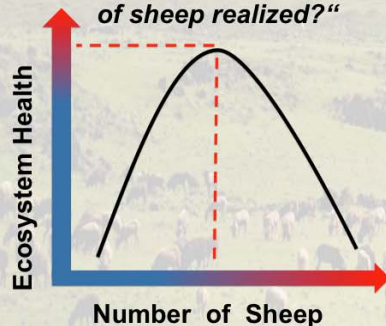
•Fire risk

2010 Pōhakuloa fire destroys > 1000 acres of Endangered palila bird critical habitat



The Need

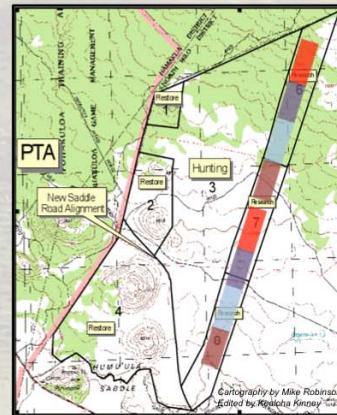
“At what point is the the maximum benefit of sheep realized?”



The approach

We propose a large-scale and long-term ecological experiment in the Humu`ula demonstration area.

- 1) Expose plants in fenced research units to variations in sheep grazing duration and intensity.



- 2) Measure the response of plant and animals to variations in duration and intensity of sheep grazing over time.
- 3) Measure the response of soil nutrients and hydrological properties to variations in duration and intensity of sheep grazing over time

The targets

MANAGE AND CONTROL INVASIVE WEEDS



REDUCE FIRE FUELS



Intensity of Grazing

Animal Health and Care

Duration of Grazing

Intellectual merit

This study will quantify the effects of prescribed grazing on environmental quality, fire risk and biodiversity.

Our findings will provide valuable new insights into the ways in which human and natural systems may interconnect to benefit ecosystem services and sustainable natural resource development.

Broader impacts

Promotes DHHL beneficiary food sustainability and sovereignty.

Serves as a model for protected area design of Humu`ula, Hawai`i and `Āina Mauna Legacy program areas abroad.

Conserves plant and animal resources valued by the local community.

Acknowledgements

We thank the Department of Hawaiian Homelands. We also gratefully acknowledge the support and kokua of East Hawaii Superintendent Louis Hao, Property Development Agent Mike Robinson and the Humu`ula project working group.

‘Āina Mauna Legacy Program

Project as Proposed to Date:

“One of the central focuses of the Aina Mauna Legacy Program is that the activities and programs implemented need to be **economically self-sustaining**, with the goal to **reinvest the revenue into the management of the property.**”

Upfront Costs

- Estimated fencing costs if purchased and labor is hired: \$679,500 - \$885,000
- Estimated restoration costs: \$1,357,500

Potential Revenues from Aina Mauna

- 2013 to 2015 - \$217,500 (koa, gorse control licenses, eco-tours, lunch wagon, convenience store)
- 2015 to 2018 - \$106,500 - \$342,500 (all above plus slaughter house, chill house, education center, lodge)
- 2019 to 2023 - \$236,500 - \$472,500 (all above plus Christmas trees and bioenergy)



What Can I Do?



Kokua?

Volunteer as a community contact for this project.

Serve on one of the Sub-committees:

- Recreation (aka hunting) – Ala Lindsey
- Restoration – Cheyenne Perry
- Research – Kealoha Kinney

Mana`o?

Please contact Mike Robinson,
Project Coordinator

mike.e.robinson@hawaii.gov, 895-1285
...or one of our sub-committee Chairs

Malama?

Plant trees, build fence, apply to hunt, make it happen!



‘Āina Mauna Legacy Program

Mahalo nui loa!



Ke ana la`ahana, Kaumeke, Laupahoehoe students
KBC overnigher – high elevation native forest restoration

Hard Work and Perseverance is Rewarded





Next Steps...

- **July 5** **BC Hilo Meeting**
- **July 8** **BC Waimea Meeting**

-----*30 day comment period*-----

- **Aug 8** **End of Comment Period**
- **Aug. 19 & 20** **HHC Action**
 - Beneficiary Consultation Report
 - Project Approval?