

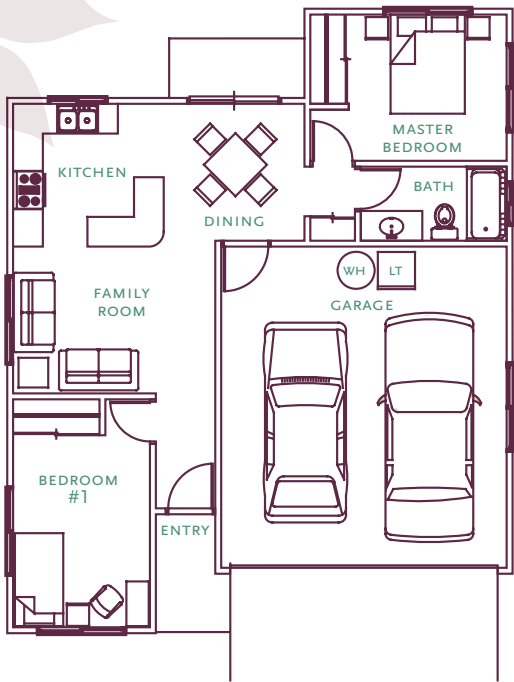
ULU {Two Bedroom, One Bath}

Total Net Living Area 763

GROSS AREA	
Garage	472
Covered Entry/Lanai	32
Total SQ FT	1,267



Ulu
Two Bedroom, One Bath



ALL FLOOR PLANS ARE APPROXIMATE AND MAY BE SUBJECT TO CHANGE.

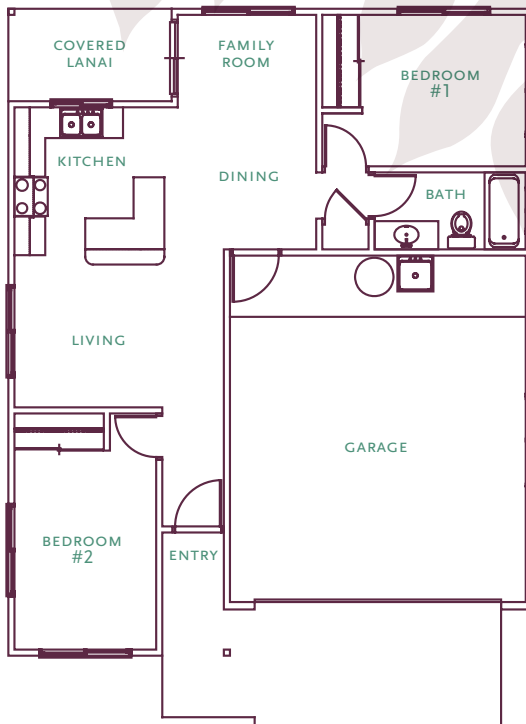
ULU DELUXE {Two Bedroom, One Bath}

Total Net Living Area 820

GROSS AREA	
Garage	472
Covered Entry	32
Covered Lanai	64
Total SQ FT	1,388



Ulu Deluxe
Two Bedroom, One Bath



ALL FLOOR PLANS ARE APPROXIMATE AND MAY BE SUBJECT TO CHANGE.

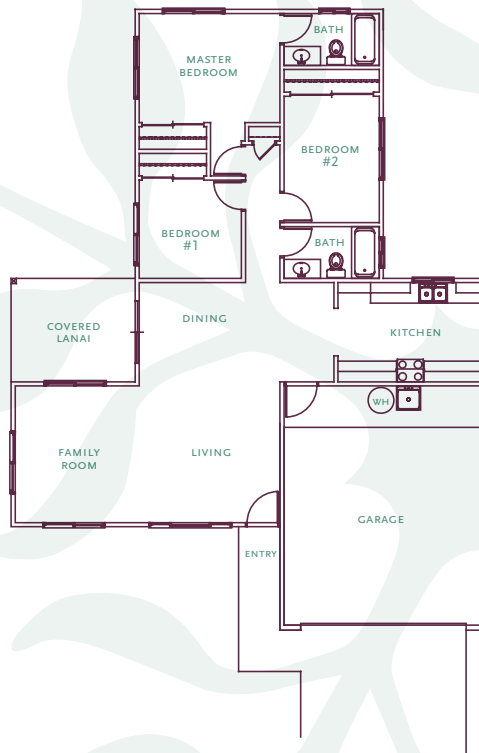
‘ŌHI‘A DELUXE {Three Bedroom, Two Bath}

Total Net Living Area 1,341

GROSS AREA	
Garage	467
Covered Lanai	120
Total SQ FT	1,928



‘Ōhi‘a Deluxe
Three Bedroom, Two Bath



ALL FLOOR PLANS ARE APPROXIMATE AND MAY BE SUBJECT TO CHANGE.



These lot layout plans
are intended for general
reference only.

MEETING SCHEDULE

Orientation Meeting
September 28, 2005

Lot Selection Meeting
October 28, 2006

AWARDS AVAILABLE:
98 lots, 7,200–8,000 SQ FT lots
(86 Turnkey units)
(12 Self-Help units)

PROPOSED
CONSTRUCTION SCHEDULE

Site Construction
Summer 2006 – Spring 2007

House Construction
Spring 2007 – Spring 2008



WAIIEHU KOU 4, MAUI
TURNKEY AND SELF-HELP PROPERTIES

Waiehu Kou 4 is a 35.6-acre parcel of land located in Waihe'e, a rural residential village located approximately 2.5 miles north of Wailuku town on the island of Maui. Schools, shops, health care and recreational facilities are readily available near this community.

CLIMATE

Average temperatures range from
75 to 85 degrees

PHYSICAL CHARACTERISTICS

SOIL:

Silty Clay

WATER:

Potable water from the Department of
Water Supply's Central Maui System

RAINFALL:

Approximately 20 inches a year

ELEVATION:

35–110 feet above sea level
The property gently slopes in a west to
east direction

DRAINAGE:

Land drains into an adjacent gulch
and culvert

FLOOD ZONE:

Waiehu Kou 4 is located outside of the
500-year floodplain. Some areas are
located within the 100-year flood plain

ROADS:

County Standard

SEWER:

County Sewer

COMMUNITY

NOISE:

Ambient noise generated by traffic

POLICE:

Maui County Police Department
Central Maui Patrol

FIRE:

County Department of Fire Control
Wailuku Station

EMERGENCY SERVICES:

Maui Memorial Medical Center

PUBLIC SCHOOLS:

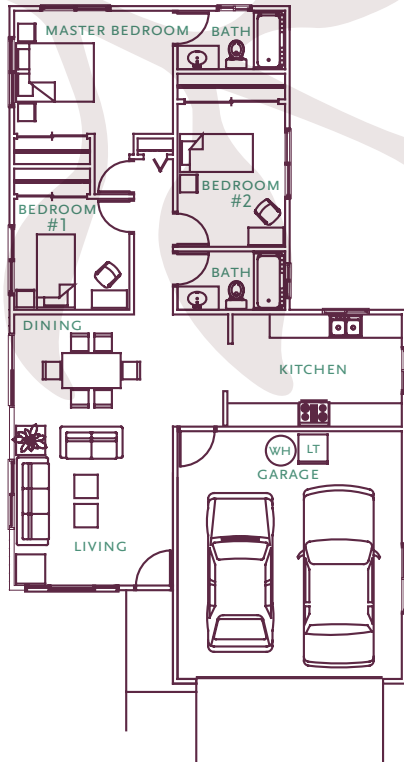
Waihe'e Elementary School
'Iao Intermediate School
Baldwin High School
Maui Community College—University
of Hawai'i

‘ŌHI‘A {Three Bedroom, Two Bath}

Total Net Living Area	1,173
GROSS AREA	
Garage	467
Total SQ FT	1,640



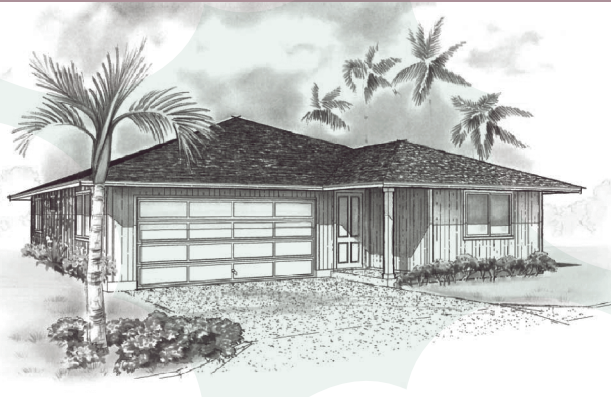
‘Ōhi‘a
Three Bedroom, Two Bath



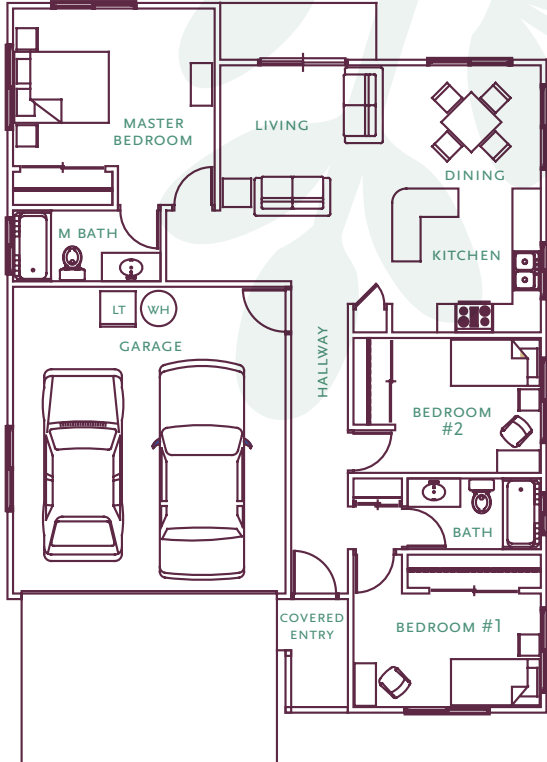
ALL FLOOR PLANS ARE APPROXIMATE AND MAY BE SUBJECT TO CHANGE.

KAMANI {Three Bedroom, Two Bath}

Total Net Living Area	1,193
GROSS AREA	
Garage	470
Covered Lanai	26
Total SQ FT	1,689



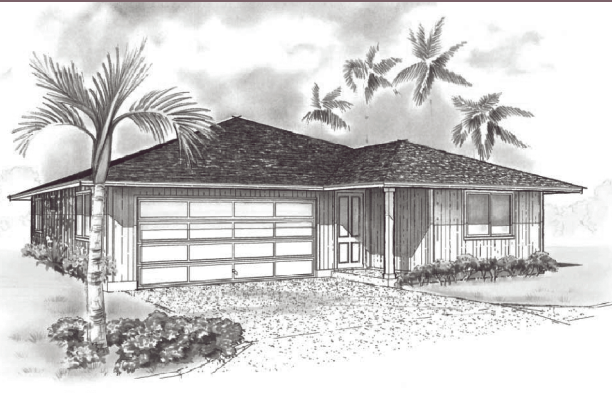
Kamani
Three Bedroom, Two Bath



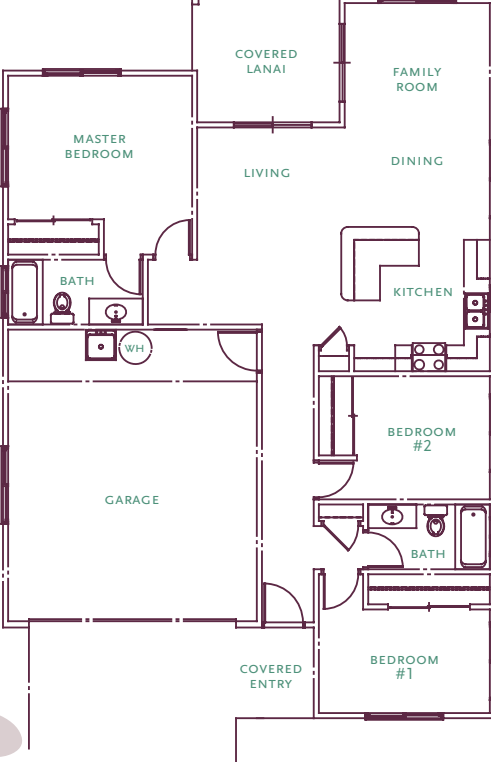
ALL FLOOR PLANS ARE APPROXIMATE AND MAY BE SUBJECT TO CHANGE.

KAMANI DELUXE {Three Bedroom, Two Bath}

Total Net Living Area	1,309
GROSS AREA	
Garage	470
Covered Entry	26
Covered Lanai	108
Total SQ FT	1,913



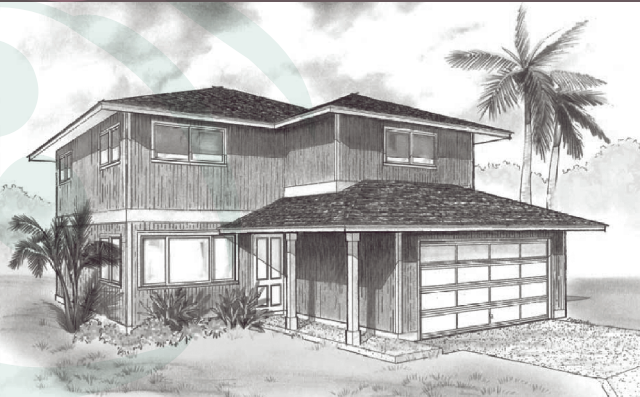
Kamani Deluxe
Three Bedroom, Two Bath



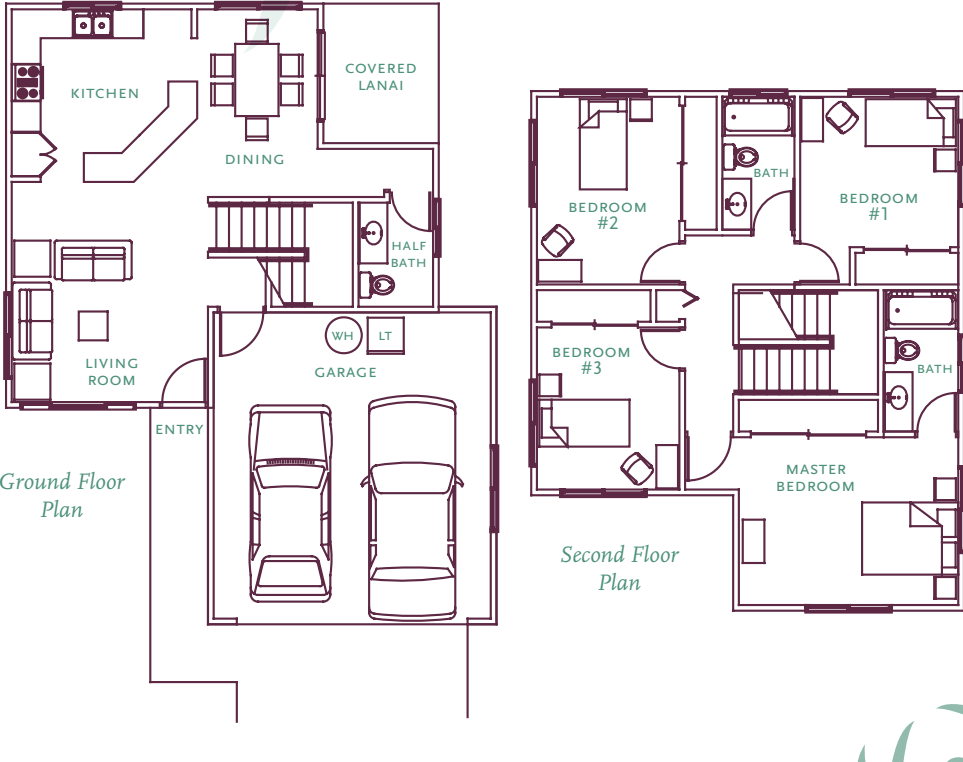
ALL FLOOR PLANS ARE APPROXIMATE AND MAY BE SUBJECT TO CHANGE.

KOA {Four Bedroom, Two and a Half Bath}

Total Net Living Area	1,628
GROSS AREA	
Garage	471
Covered Entry/Lanai	145
Total SQ FT	2,244



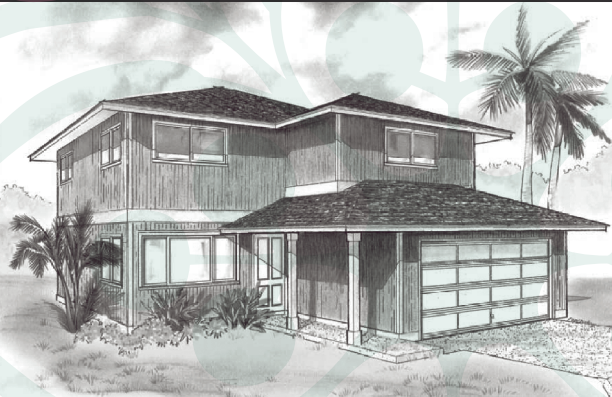
Koa
Four Bedroom, Two and a Half Bath



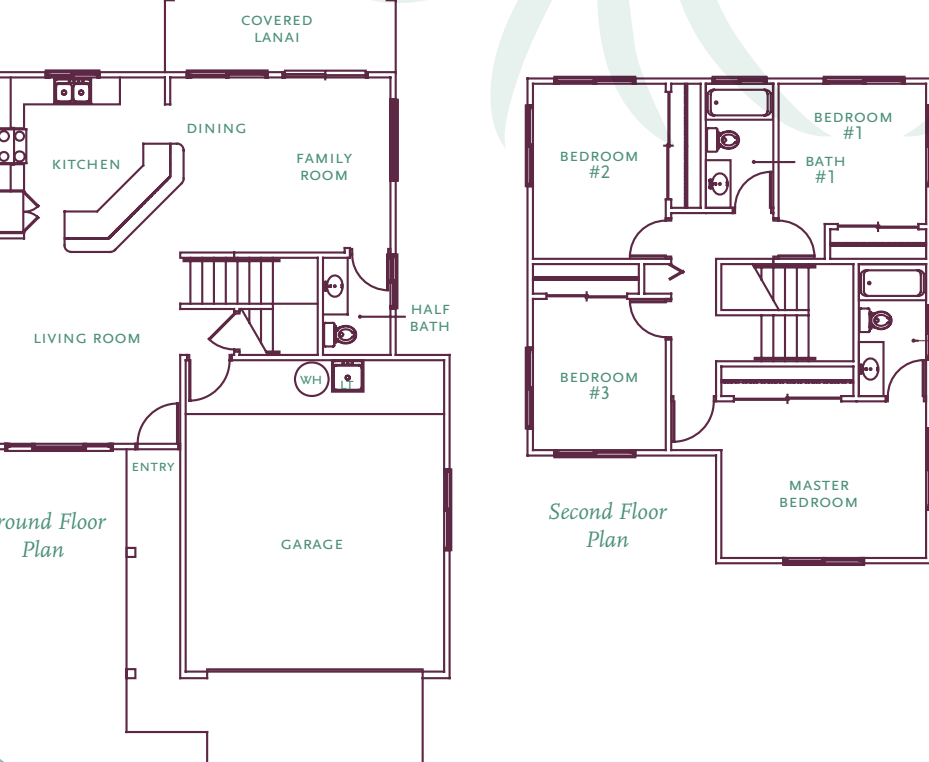
ALL FLOOR PLANS ARE APPROXIMATE AND MAY BE SUBJECT TO CHANGE.

KOA DELUXE {Four Bedroom, Two and a Half Bath}

Total Net Living Area	1,705
GROSS AREA	
Garage	471
Covered Entry	68
Covered Lanai	103
Total SQ FT	2,347



Koa Deluxe
Four Bedroom, Two and a Half Bath



ALL FLOOR PLANS ARE APPROXIMATE AND MAY BE SUBJECT TO CHANGE.