

Mālua

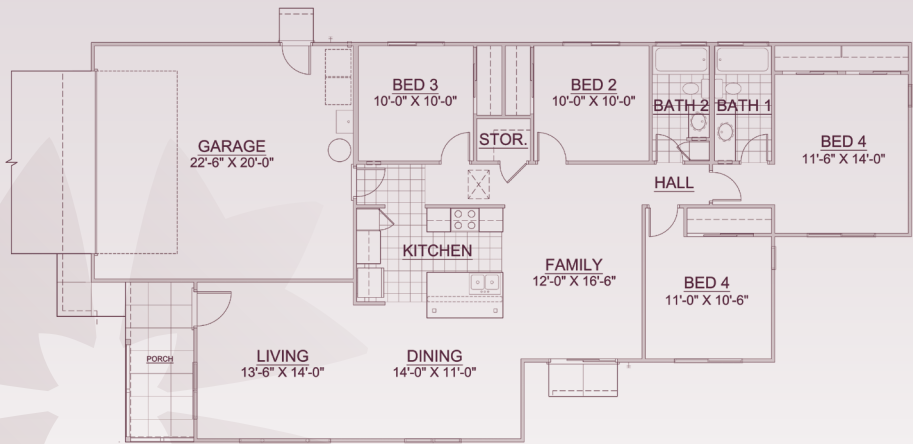
| Sea breeze

MĀLUA ~ PLAN 4

{Four Bedroom, Two Bath}

TOTAL LIVING AREA: 1,539 SQ. FT.

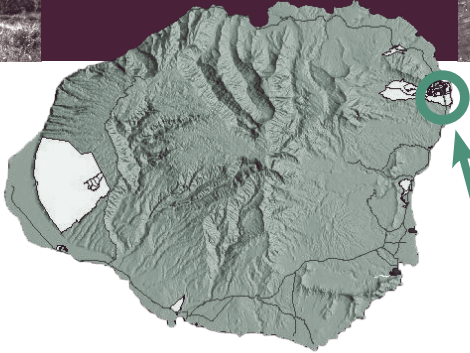
	SQ. FT.
Interior	1,539
Garage	485
Porch	84
Total	2,108



ALL FLOOR PLANS ARE APPROXIMATE AND MAY BE SUBJECT TO CHANGE. THESE PLANS ARE COPYRIGHTED.



PI‘ILANI MAI KE KAI KAUA‘I



Pi'ilani Mai Ke Kai is approximately
71 acres in size

LOTS AVAILABLE:
26 turnkey, minimum
10,000 SQ FT lots



MEETING SCHEDULE

Offering Orientation Meeting
December 3, 2008

Response Form Deadline
December 12, 2008

Pre-Qualification Letter Deadline
January 9, 2009

Selection Meeting
January 31, 2009

PROPOSED CONSTRUCTION SCHEDULE

On-Site Infrastructure Complete
September 2008

House Construction Start
Late Spring 2009

Houses Complete
End of 2009

PI‘ILANI MAI KE KAI, KAUA‘I

TURNKEY PROPERTIES

Pi'ilani Mai Ke Kai, is a 71-acre parcel of land located on the northeastern coast on the island of Kaua'i. Minutes away from Anahola Beach Park, schools, shops, health care and recreational facilities are readily available near this community.

CLIMATE

Average annual temperatures range from
60 to 87 degrees

PHYSICAL CHARACTERISTICS

SOIL:
Red silty clay

WATER:
County water system

RAINFALL:
50–100 inches per year

ELEVATION:
Sea level to 800 feet above sea level
Slopes range from 0-20%

DRAINAGE:
Land drains quickly both by runoff and
infiltration on the lower plains

FLOOD ZONE:
Pi'ilani Mai Ke Kai is outside the 500-year
floodplain

ROADS:
County standard

SEWER:
Individual wastewater system

COMMUNITY

NOISE:
Ambient noise generated by vehicle traffic
and occasional overhead aircraft

POLICE:
Kapa'a Police Sub-Station
Hanalei Police Station

FIRE:
Kapa'a Fire Station
Hanalei Fire Station

EMERGENCY SERVICES:
Samuel Mahelona Memorial
Hospital, Kapa'a
Kapa'a Community Health Clinic, Kapa'a
Wilcox Memorial Hospital, Lihu'e
Lihu'e Health Center, Lihu'e
Hale Le'a Kaua'i Medical Clinic, Kilauea

PUBLIC SCHOOLS:
Kanuikapono New Century Public
Charter School, Anahola
Anahola School
Kapa'a Elementary School
Kapa'a Middle School
Kapa'a High School
Kaua'i Community College



Aheahe

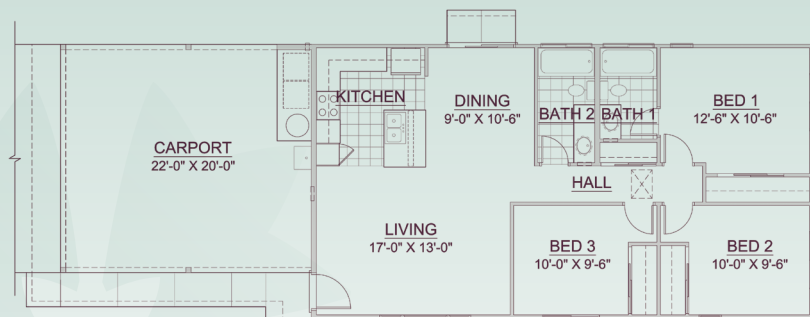
| A gentle wind

AHEAHE ~ PLAN 1

{Three Bedroom, Two Bath}

TOTAL LIVING AREA: 1,056 sq. ft.

	SQ. FT.
Interior	1,056
Carport	440
Total	1,496



Kolonahe

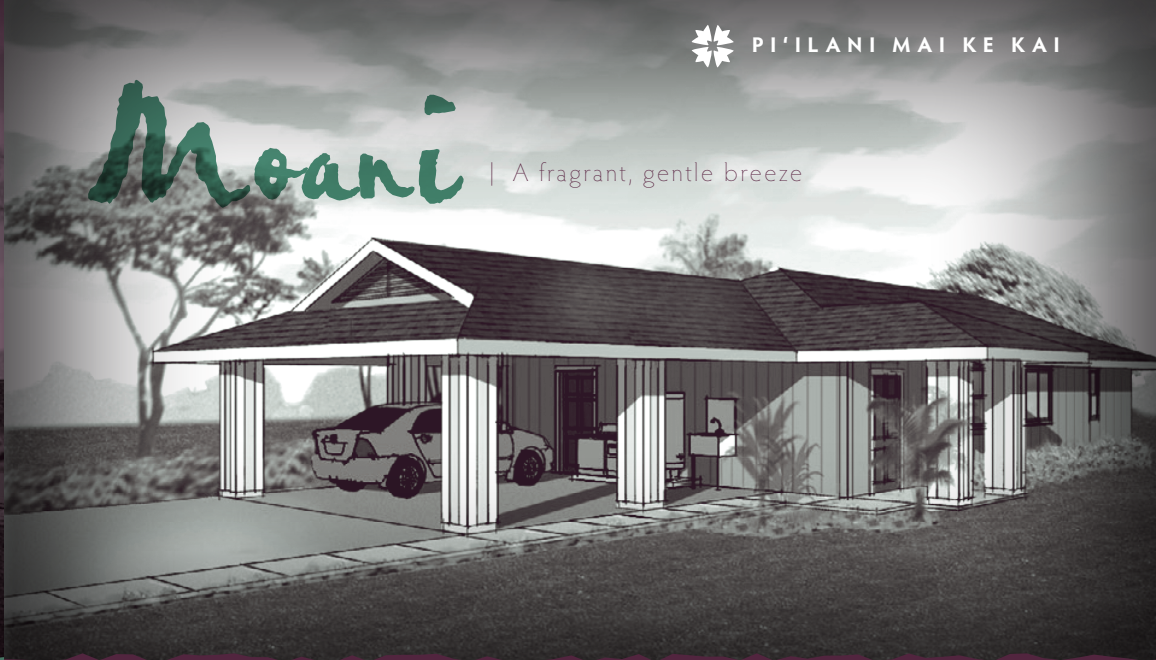
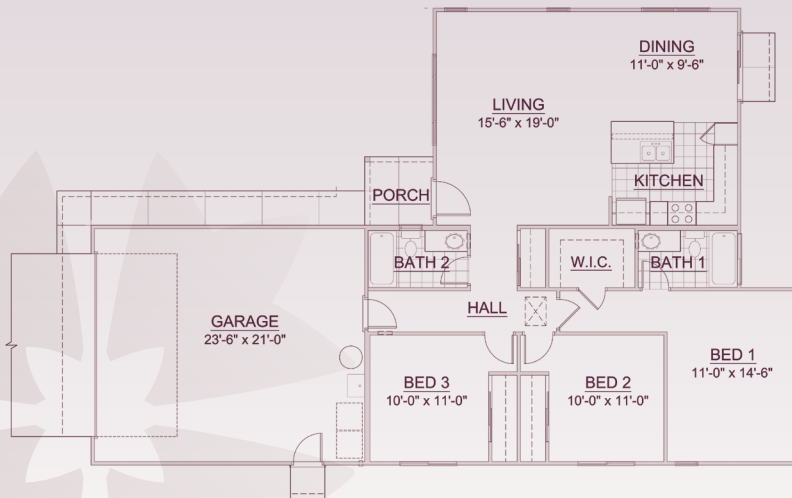
| A pleasant breeze

KOLONAHE ~ PLAN 2

{Three Bedroom, Two Bath}

TOTAL LIVING AREA: 1,280 sq. ft.

	SQ. FT.
Interior	1,280
Garage	508
Porch	36
Total	1,824



Moani

| A fragrant, gentle breeze

MOANI ~ PLAN 3

{Four Bedroom, Two Bath}

TOTAL LIVING AREA: 1,296 sq. ft.

	SQ. FT.
Interior	1,296
Carport	440
Porch	48
Total	1,784

