



PI'ILANI MAI KE KAI PHASE 1, KAUA'I

VACANT LOTS

Pi'ilani Mai Ke Kai, is a 71-acre parcel of land located on the northeastern coast on the island of Kaua'i. Minutes away from Anahola Beach Park, schools, shops, health care and recreational facilities are readily available near this community.

CLIMATE

Average annual temperatures range from 60 to 87 degrees

PHYSICAL CHARACTERISTICS

SOIL: Red silty clay

WATER: County water system

RAINFALL: 50–100 inches per year

ELEVATION:

Sea level to 800 feet above sea level
Slopes range from 0–20%

DRAINAGE:

Land drains quickly both by runoff and infiltration on the lower plains

FLOOD ZONE:

Pi'ilani Mai Ke Kai is outside the 500-year floodplain

ROADS: County standard

SEWER:

Individual wastewater system

COMMUNITY

NOISE:

Ambient noise generated by vehicle traffic and occasional overhead aircraft

POLICE:

Kapa'a Police Sub-Station
Hanalei Police Station

FIRE:

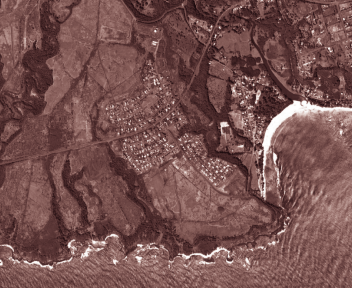
Kapa'a Fire Station
Hanalei Fire Station

EMERGENCY SERVICES:

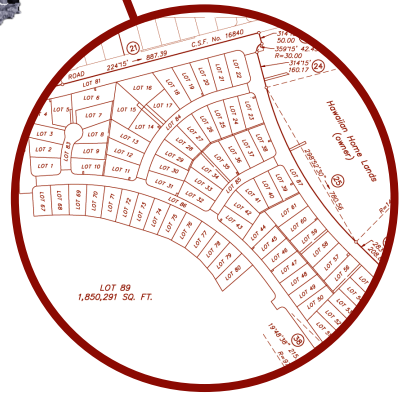
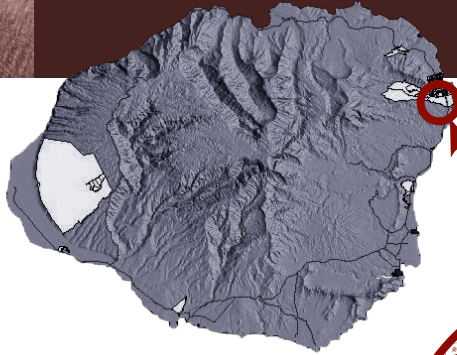
Samuel Mahelona Memorial Hospital,
Kapa'a
Kapa'a Community Health Clinic, Kapa'a
Wilcox Memorial Hospital, Lihu'e
Lihu'e Health Center, Lihu'e
Hale Le'a Kaua'i Medical Clinic, Kilauea

PUBLIC SCHOOLS:

Kanuikapono New Century
Public Charter School, Anahola
Anahola School
Kapa'a Elementary School
Kapa'a Middle School
Kapa'a High School
Kaua'i Community College



PI'ILANI MAI KE KAI KAUA'I



Pi'ilani Mai Ke Kai is a total
of 71 acres

AWARDS AVAILABLE:
10 vacant lots, average of
10,000 SQ FT lots

PROPOSED MEETING SCHEDULE

Orientation Meeting
September 13, 2008

Contractors Fair
November 1, 2008 (tentative—subject to change)

Selection Meeting
January 10, 2009 (tentative—subject to change)

PROPOSED INFRASTRUCTURE SCHEDULE

Site Construction
Completed September 2008

Infrastructure is the installation of roads,
water lines, electricity, etc.