



# HAWAIIAN HOME LANDS

HAWAIIAN HOMES COMMISSION · DEPARTMENT OF HAWAIIAN HOME LANDS

## **KAUAI ISLAND Project Updates**

### **LAND DEVELOPMENT DIVISION**

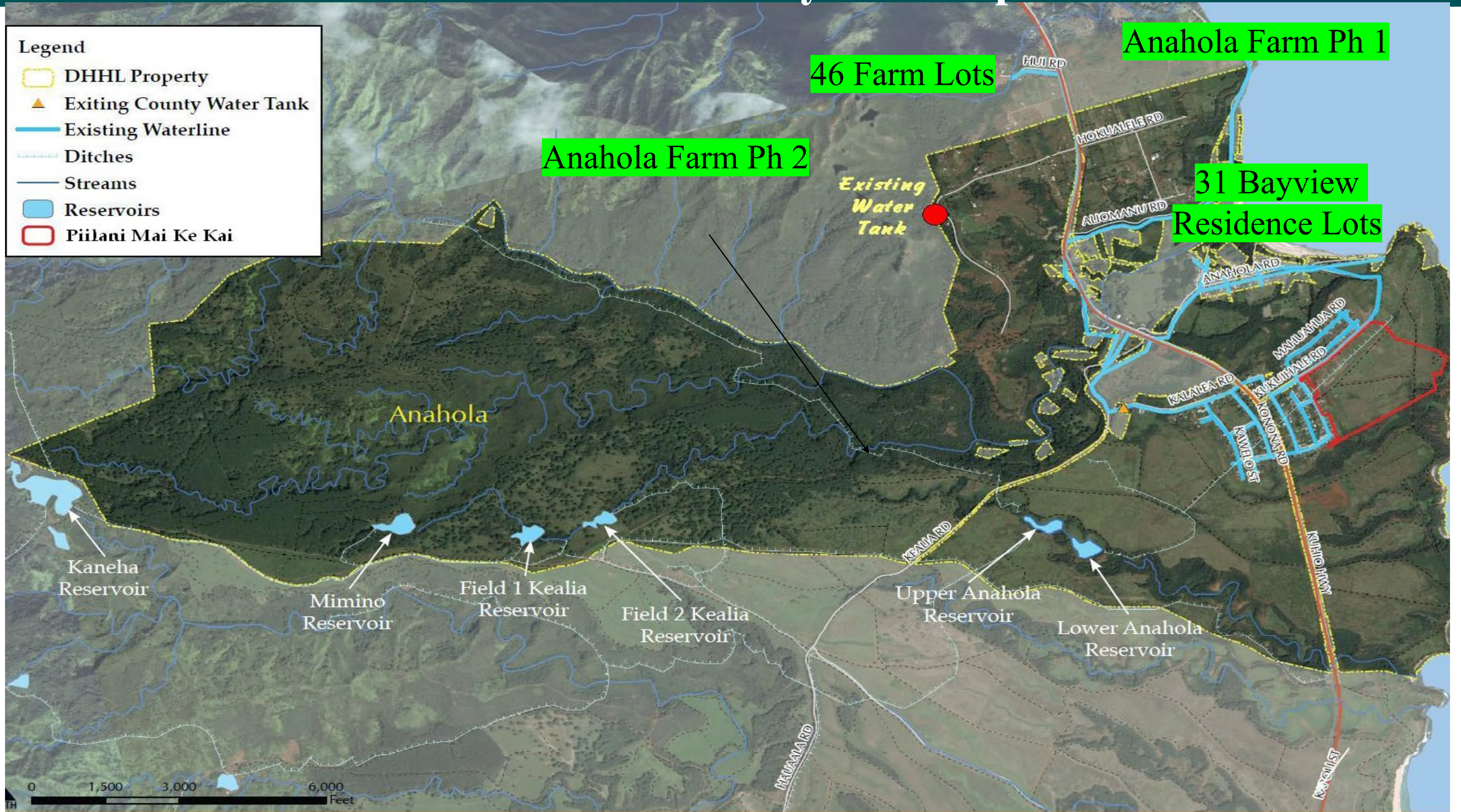
Item E-2 For Information Only  
August 15, 2022





# DHHL – USDA RD

## Anahola Farm Lots Water System Improvements







# DHHL CONTRIBUTION AND FUNDS AWARDED BY USDA RD

**(Accepted by HHC, Nov. 2018)**

## **USDA 2016 FUNDING PACKAGE**

DHHL CONTRIBUTION	\$3,770,723
USDA GRANT	<u>\$3,055,137</u>
SUBTOTAL	\$6,825,860

## **USDA 2018 FUNDING PACKAGE ADDS:**

USDA LOAN	\$4,100,000
USDA GRANT	<u>\$1,999,946</u>
SUBTOTAL	\$6,099,946

**GRAND TOTAL                    \$12,955,806**



# ANAHOLA FARM LOTS WATER SYSTEM IMPROVEMENTS

## Phase 1:

Kaiwa Construction: \$3,377,709

- Replacement of transmission and distribution lines
- Improvement of pressure in mauka and makai lots
- Install smart meters, new backflow preventers
- Upgrades to fire protection; new hydrants

Construction commencement: Feb. 2020

Substantial Completion: July 2021

Expenditure to Date: \$3,100,000



# ANAHOLA FARM LOTS WATER SYSTEM IMPROVEMENTS

Phase 2:

Kiewit Infrastructure West Co.: \$ 6,692,786

- Construct 100,000 gallon temporary steel bolted water tank
- Demolish 500,000 gallon steel water tank
- Install new 440,000 gallon concrete water tank
- Construct pump station upgrades and install new submersible pump
- Construct new upper level distribution line and booster pump to increase pressure near tank

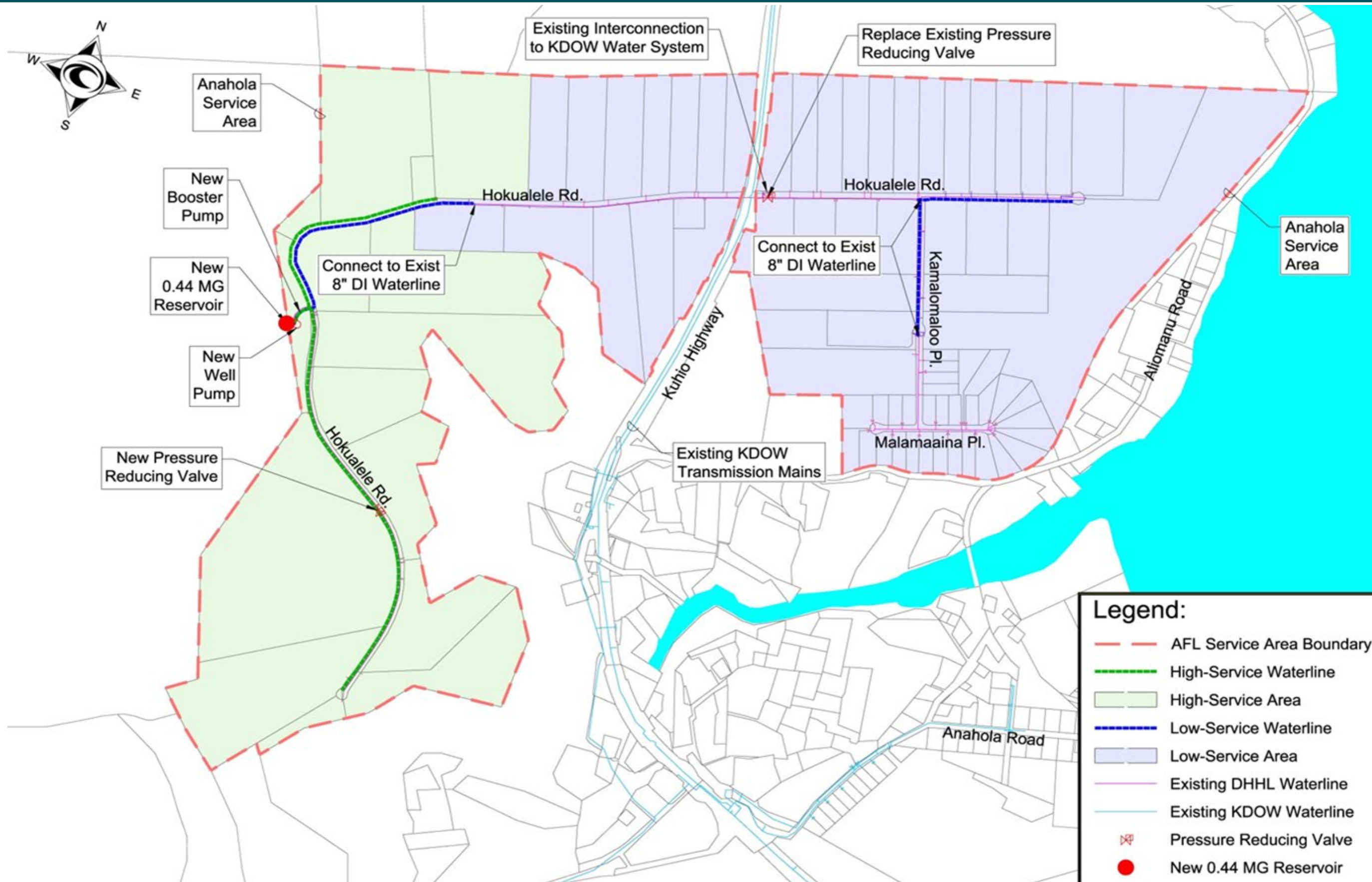
Construction commencement: Dec. 2020

Est. Completion Phase 2: Oct. 2022

Expenditure to date: \$ 6,100,000



# ANAHOLA FARM LOTS WATER SYSTEM





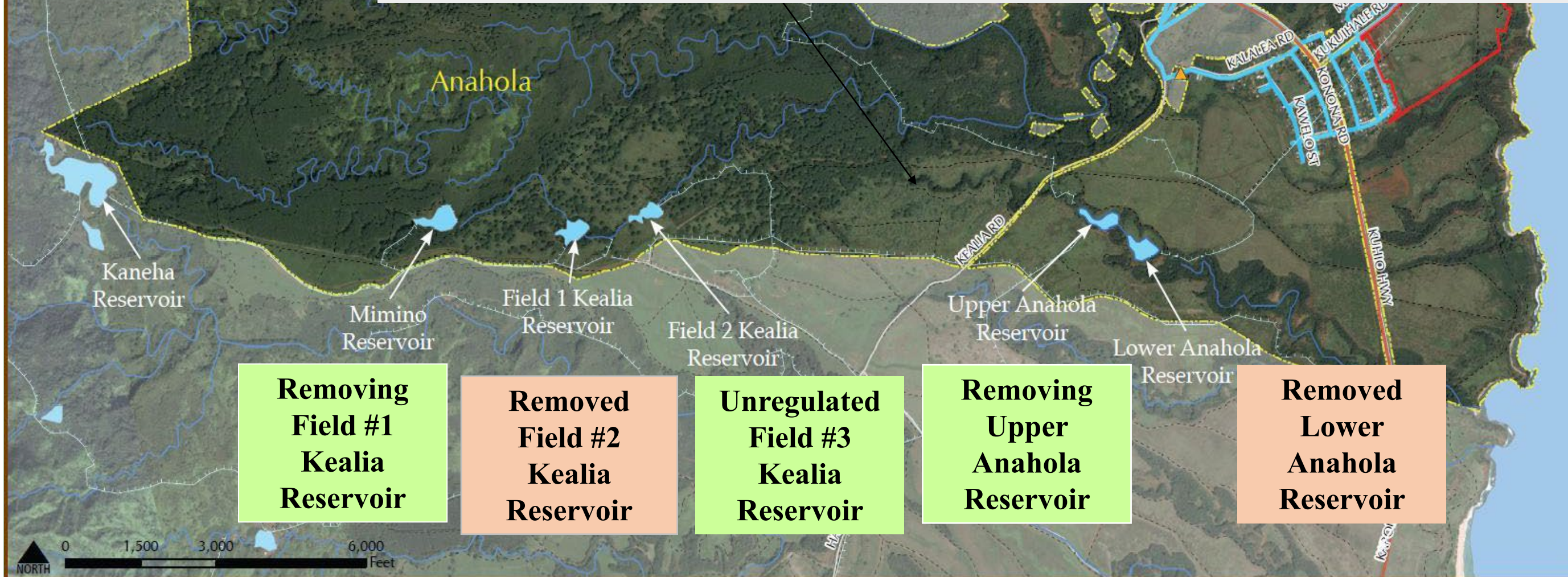


# Anahola Dam & Reservoir Improvements

**Legend**

- DHHL Property
- Existing County Water Tank
- Existing Waterline
- Ditches
- Streams
- Reservoirs
- Piilani Mai Ke Kai

- \$3.0 Million Legislative Appropriation for Dam Improvements
- New design engineer procured in early 2019
- Demolition of Field #2 and Lower Anahola completed Nov. 2020
- EA and Redesign demolition of Field #1 and Upper Anahola due to high cost of improvement, no water source, and liability to maintain a regulated dam



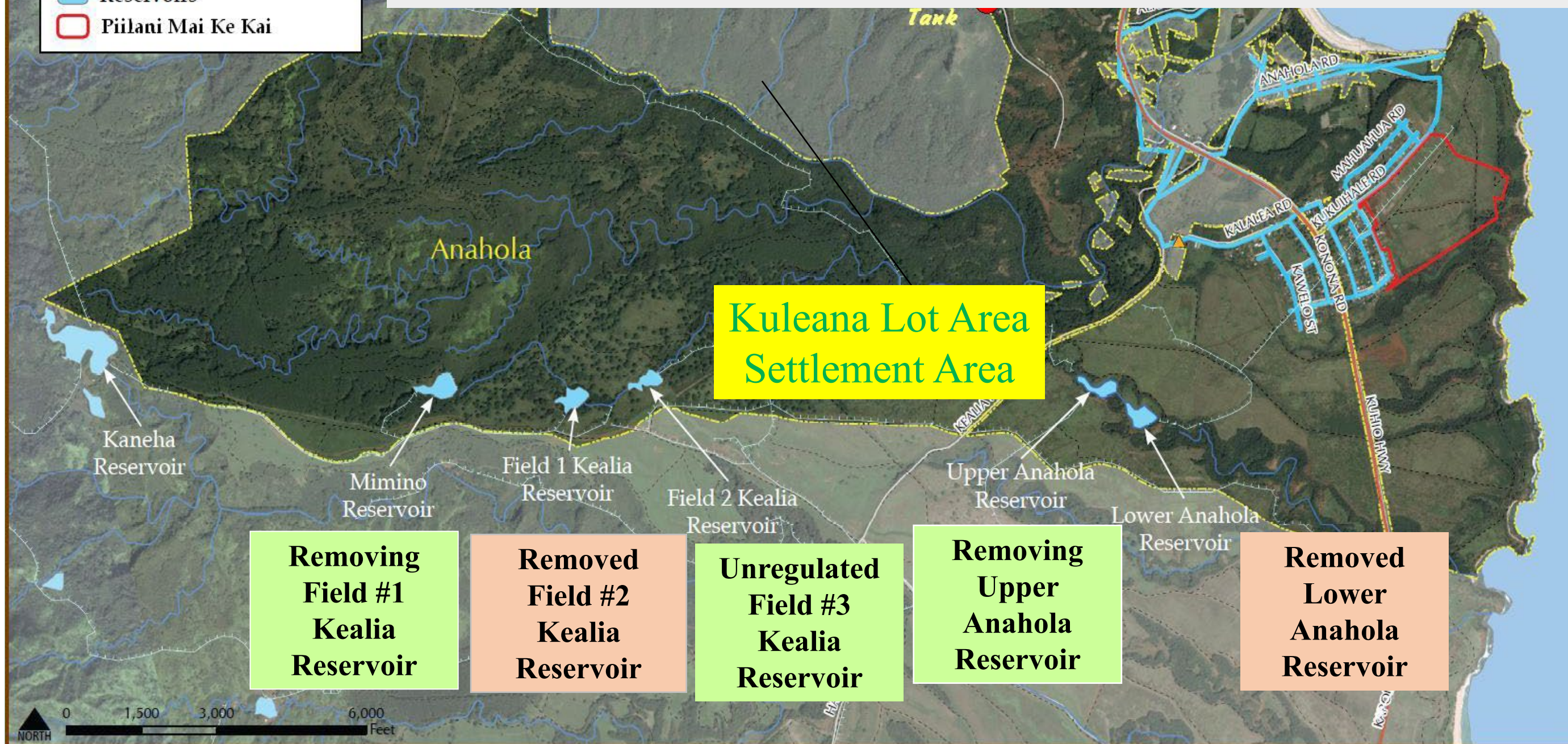


# Assessment of Dams for Anahola Kuleana Lot Settlement Plan

**Legend**

- DHHL Property
- Existing County Water Tank
- Existing Waterline
- Ditches
- Streams
- Reservoirs
- Piilani Mai Ke Kai

- Draft EA published May 2020; Final EA published June 2021
- Assessed Kealia Field #1 for non-potable; however not feasible
- Additional design funds required for redesign for demolition and removal and for Dam Safety permitting.

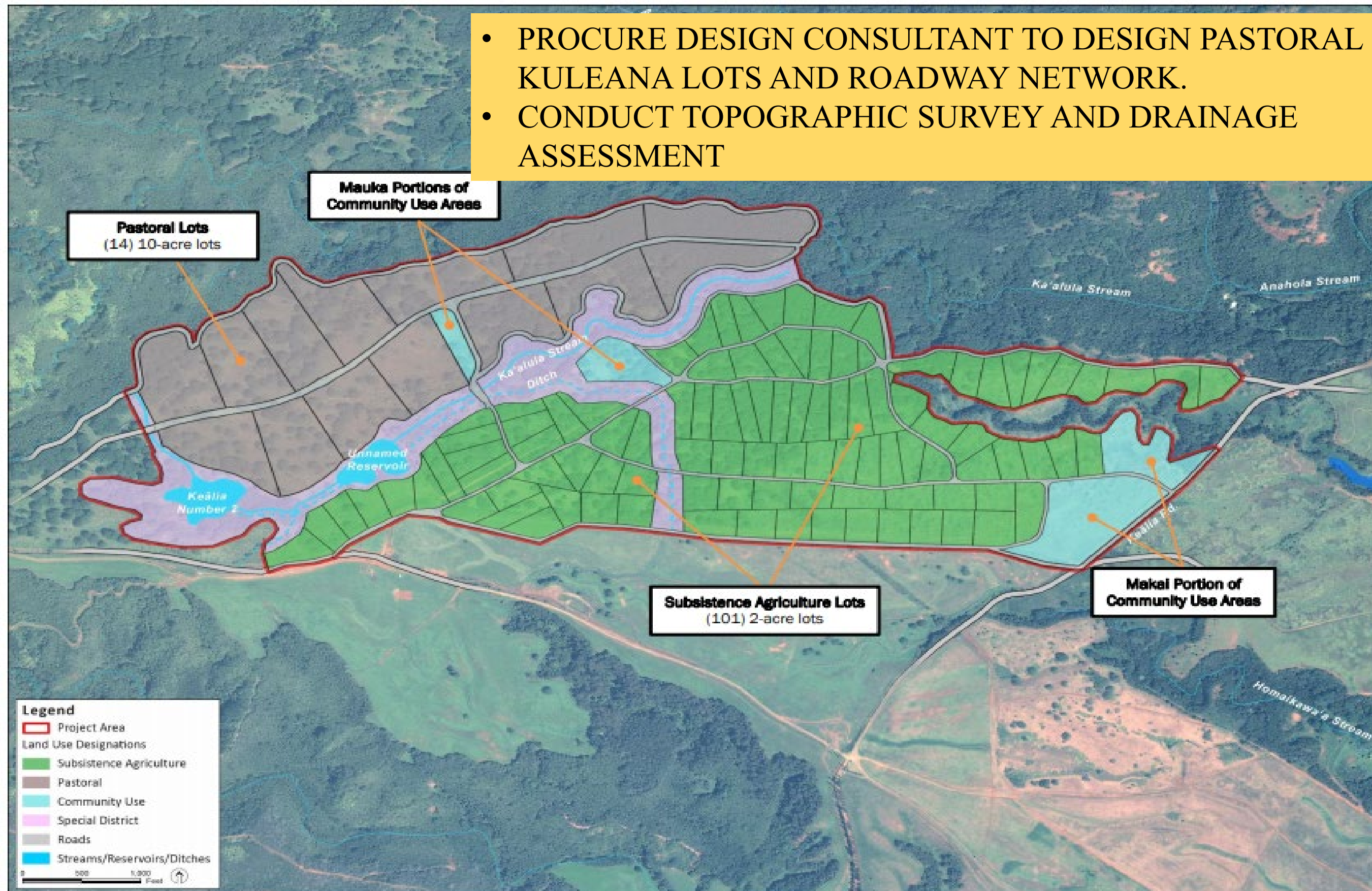






# ANAHOLA KULEANA LOT SETTLEMENT

- PROCURE DESIGN CONSULTANT TO DESIGN PASTORAL KULEANA LOTS AND ROADWAY NETWORK.
- CONDUCT TOPOGRAPHIC SURVEY AND DRAINAGE ASSESSMENT







# PI'ILANI MAI KE KAI





# Lot Assessment, Preparation for Award & Offerings in Progress

## Piilani Mai Ke Kai

## Total 171 Undivided Interest Leases

### Phase 2

(51 Lots)

- HUD ERR completed.
- No wetlands permitting required from U.S. Army Corp of Engineers for Phase 2.
- 51 vacant lots offered in 2022.

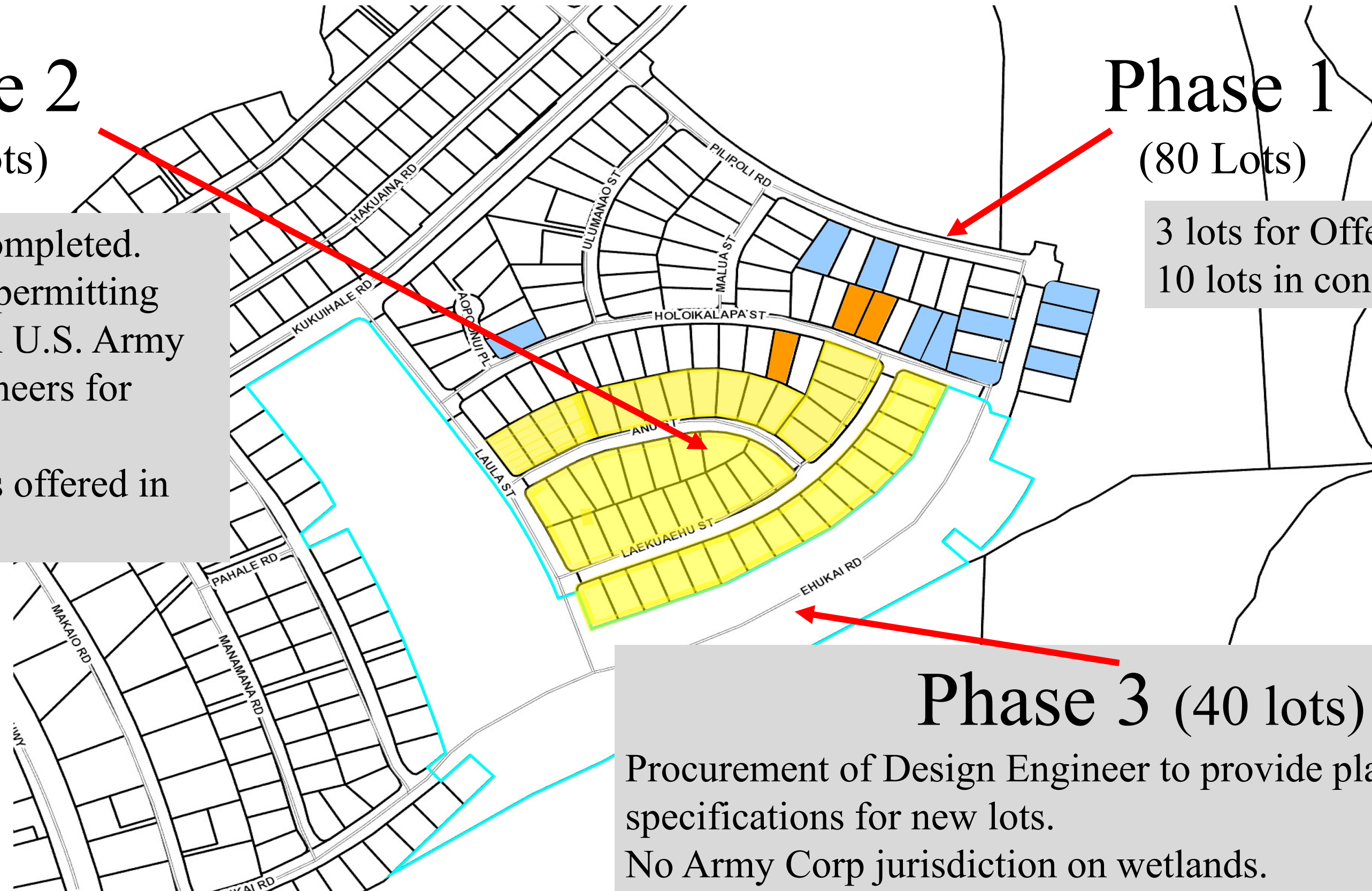
### Phase 1

(80 Lots)

3 lots for Offer  
10 lots in construction process

### Phase 3 (40 lots)

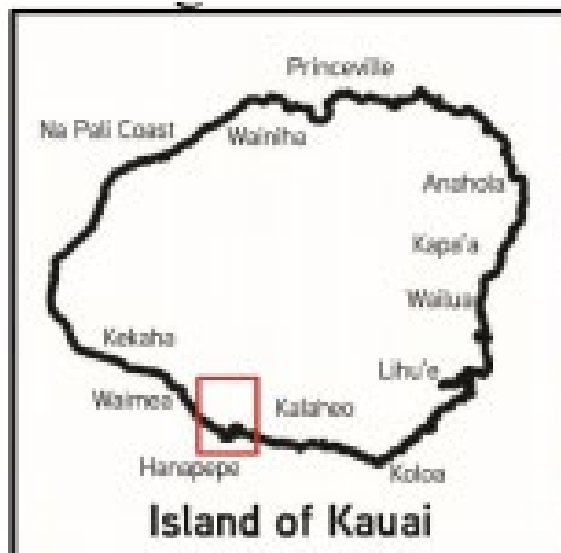
Procurement of Design Engineer to provide plans and specifications for new lots.  
No Army Corp jurisdiction on wetlands.







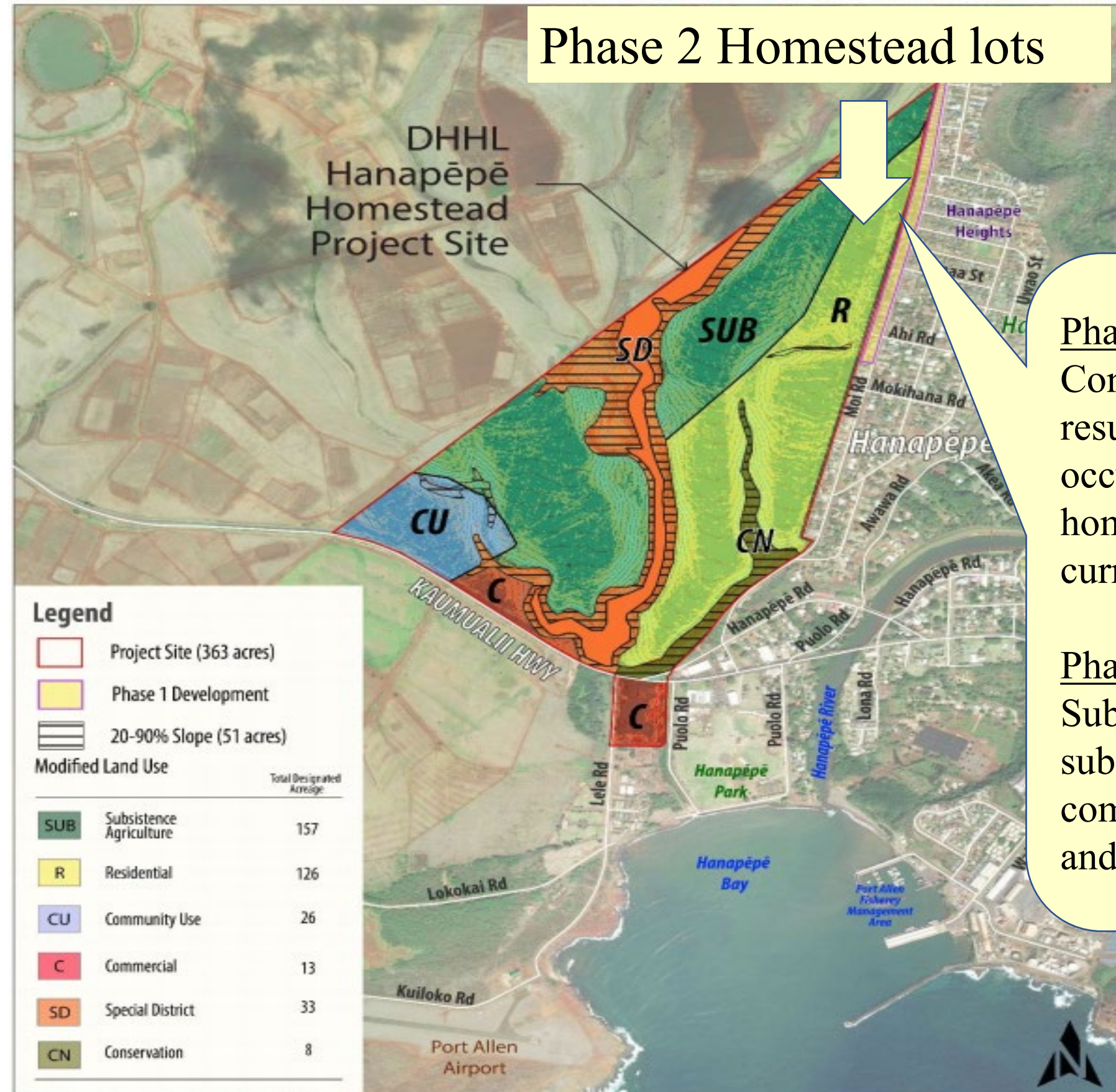
# HANAPEPE MASTERPLAN AND ENVIRONMENTAL ASSESSMENT



Legislative Appropriation: \$1,000,000 (Planning & Design) Masterplan & EA completed.

Phase 2: 82 new residential lots.

Construction estimate: \$20,000,000.



Phase 1: Consolidation and resubdivision of 47 occupied residential homestead lots, currently underway

Phase 2: Subdivision application submitted, 90% plans completed for new lots and utilities

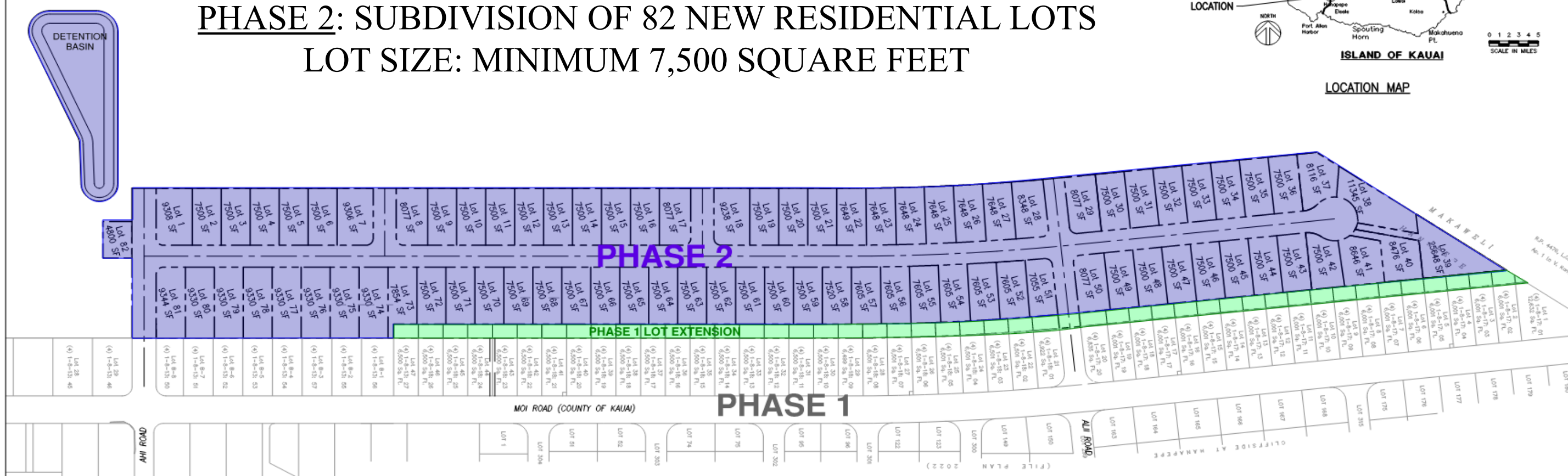
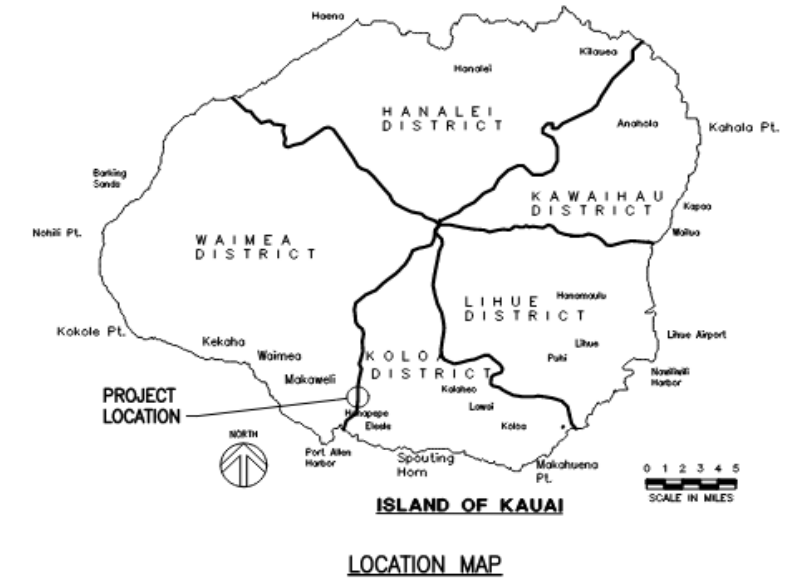




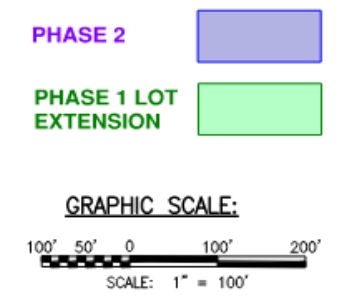
# Hanapepe Residential Phase 2

**PHASE 1: CONSOLIDATION AND RESUBDIVISION TO ADD APPROXIMATELY 1,500 SQUARE FEET TO EXISTING LOTS**

**PHASE 2: SUBDIVISION OF 82 NEW RESIDENTIAL LOTS  
LOT SIZE: MINIMUM 7,500 SQUARE FEET**



**INFRASTRUCTURE IMPROVEMENTS: COUNTY STD. ROADWAY, POTABLE WATER, SEWER, STORM DRAINAGE, UNDERGROUND ELECTRICAL/TELECOMMUNICATIONS**

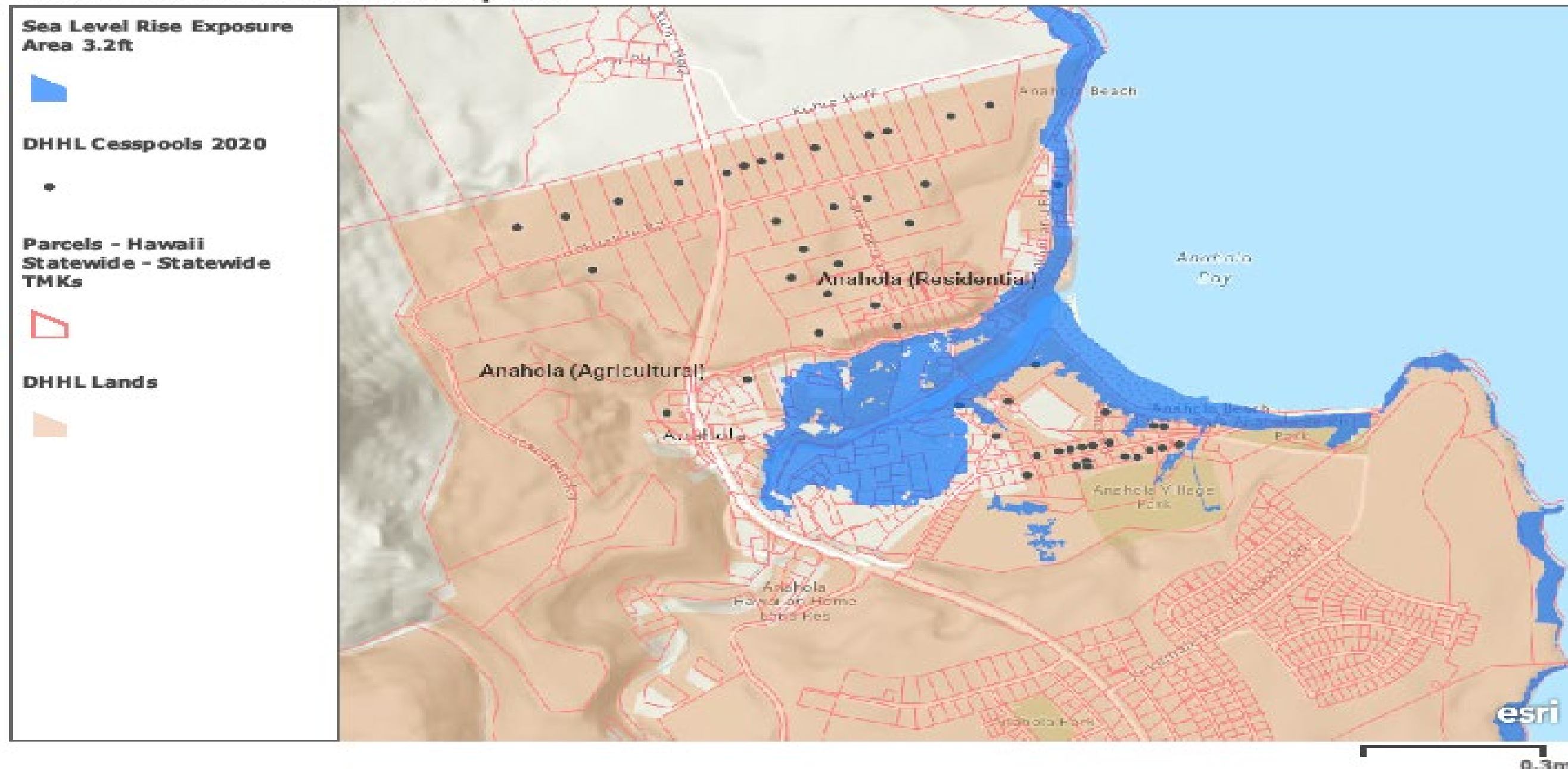




# ANAHOLA CESSPOOL INVESTIGATION

- Act 132, SLH 2018 requires upgrade, conversion, or sewer connection of all cesspools by 2050, unless exempted. DHHL implementing groundtruthing cesspool inventory data, statewide. Surveyors, including drone overflight will be deployed in October 2020.

**\*DRAFT\* DHHL Lands and Cesspools**

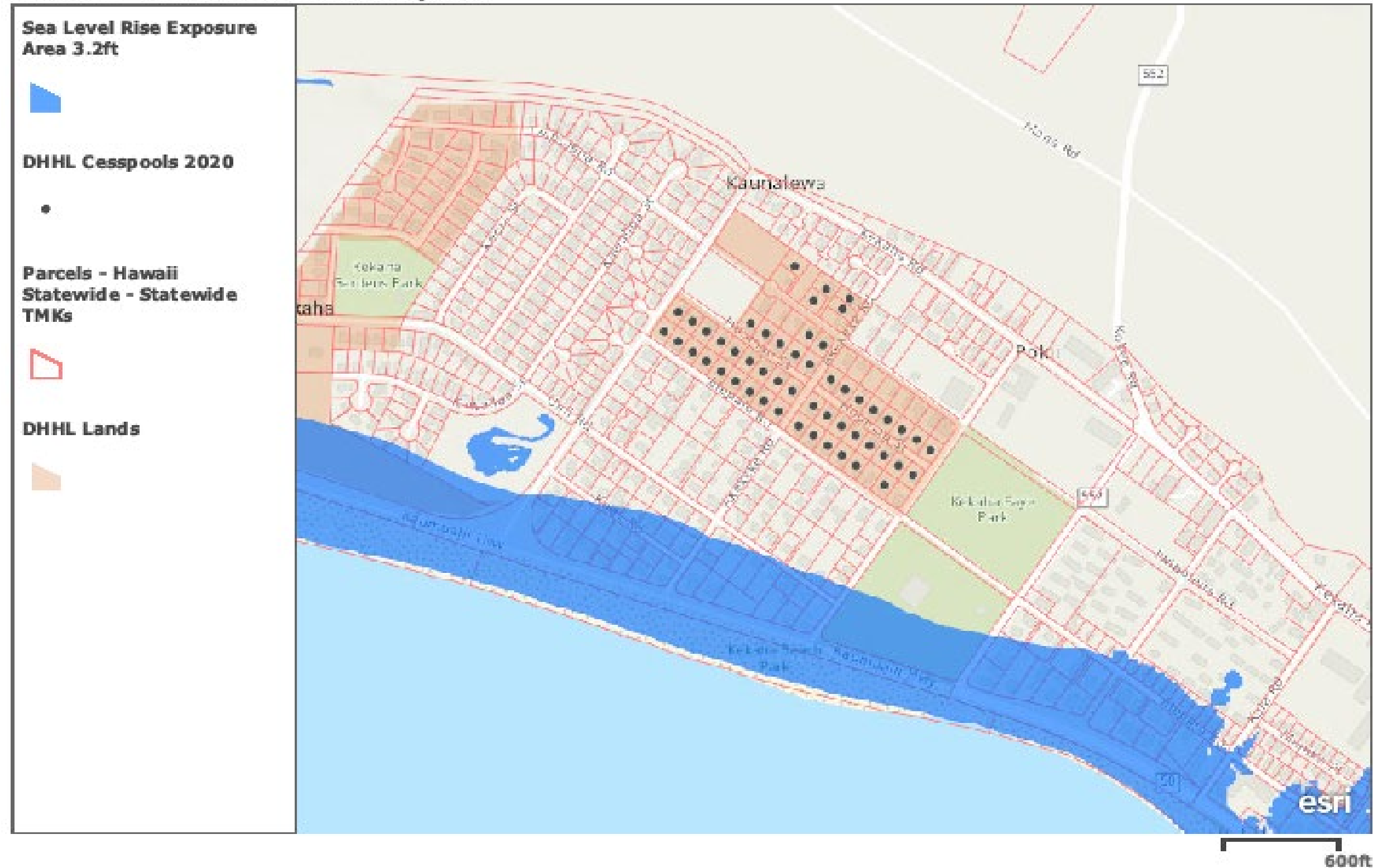






# KEKAHA CESSPOOL INVESTIGATION

## \*DRAFT\* DHHL Lands and Cesspools







# Mahalo



DEPARTMENT OF HAWAIIAN HOME LANDS

[www.dhhl.hawaii.gov](http://www.dhhl.hawaii.gov)