



HAWAIIAN HOME LANDS

HAWAIIAN HOMES COMMISSION · DEPARTMENT OF HAWAIIAN HOME LANDS

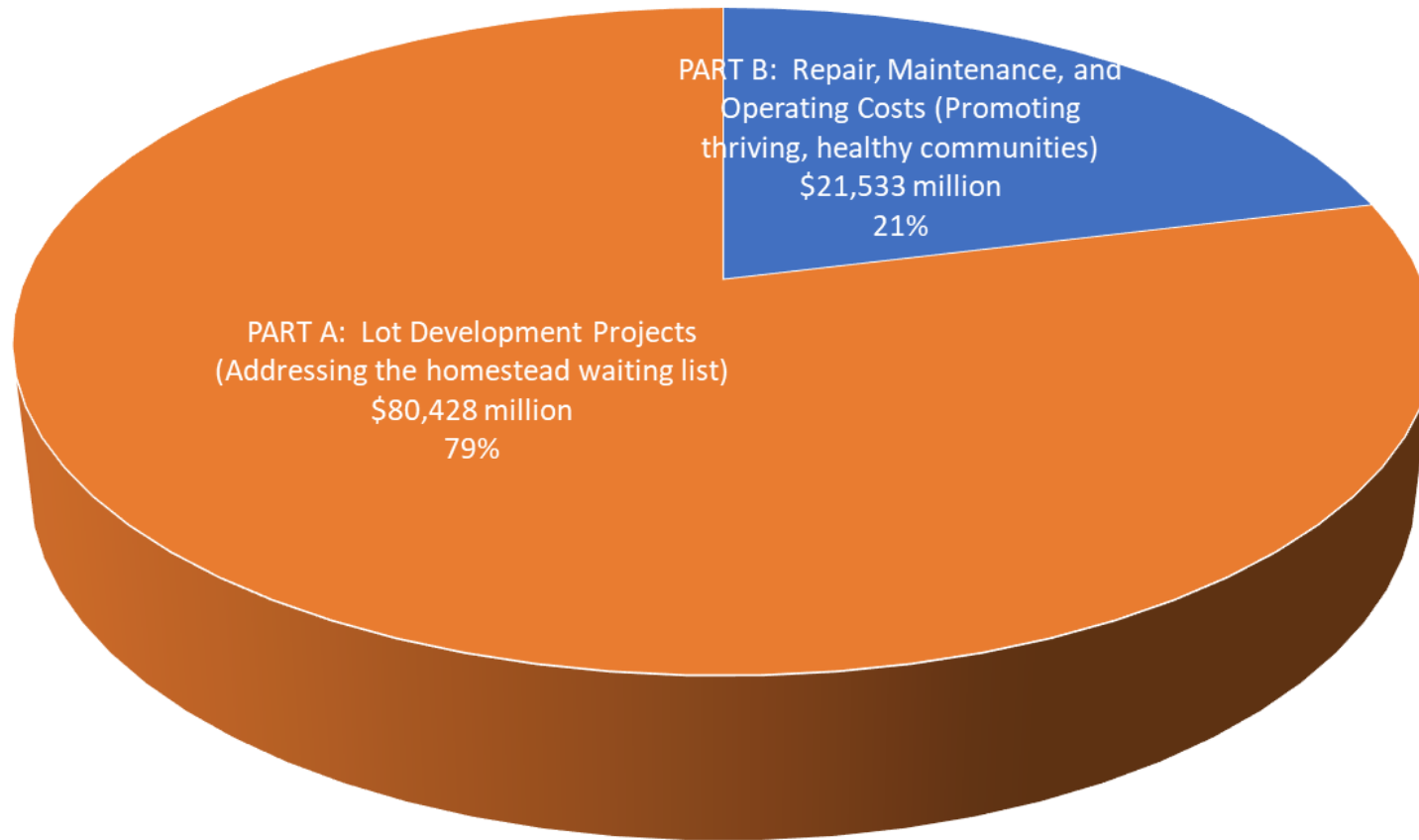
Hawaiian Homes Commission FY 23 Development Budget

June 20, 2022



Proposed FY23 Development Budget

Proposed Development Budget
Purpose 1 vs. Purpose 4

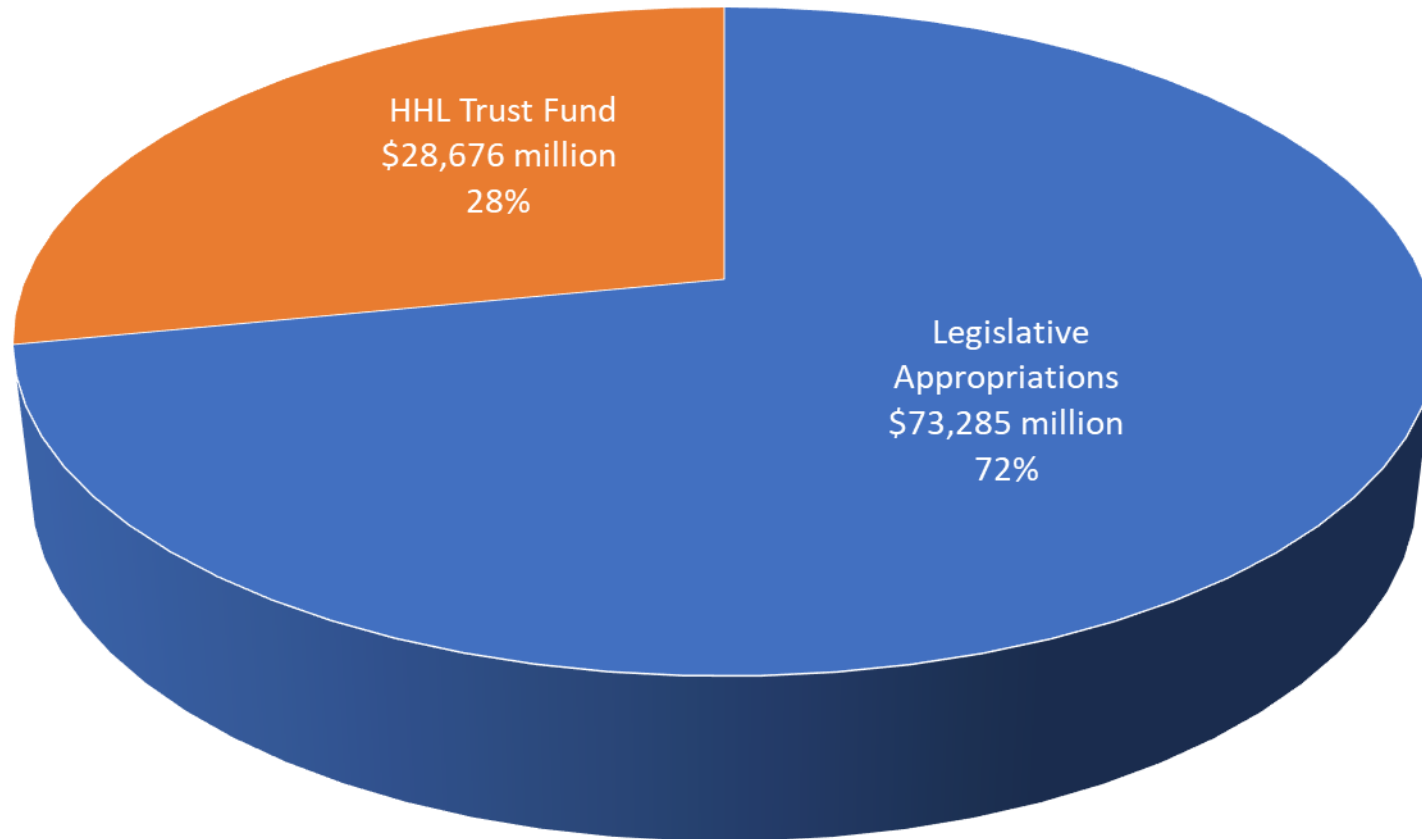


Total Budget Amount: \$101,961,000



Proposed FY22 Development Budget

Proposed Development Budget
By Source of Funds



Total Budget Amount: \$101,961,000



Purpose 1

Purpose 1

Lot Development Projects

(Addressing the homestead waiting list)



East Kapolei II-A Transit Oriented Development

Kanehili (404 lots) – 99% Occupied
Kauluokahai II-B (160 lots) – 87% Occupied
Kauluokahai II-C (130 lots) – Start construction mid 2022
Kauluokahai II-A (32.6 acres, multi-family rentals) & Telecom
\$5,000,000 SLH 21, Act 88 proviso
Kauluokahai II-E (21.9 acres, 142 lots)
Kauluokahai II-D (19.0 acres, 124 lots)
Kauluokahai II-F (23.8 acres, 155 lots)
Low Density Apartments 3 (28.8 acres, multi-family rentals)



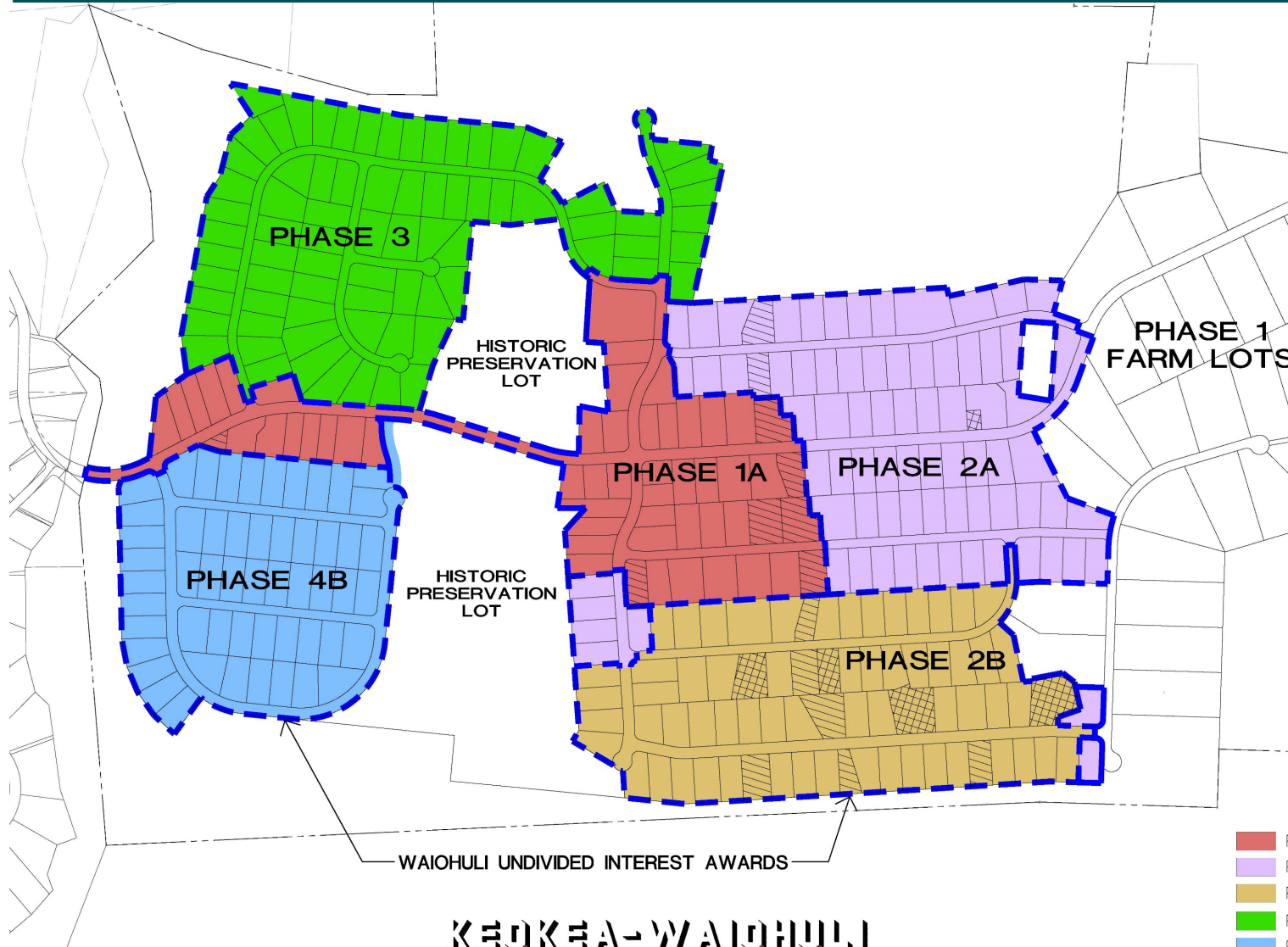


Ewa Beach (former NOAA site)





Keokea-Waiohuli, Maui



Phase 2B – 61 lots
IFB Construction Early 2023
Estimated: \$32,000,000

Phase 3 – 76 lots
Design Phase
Estimated: \$1,000,000

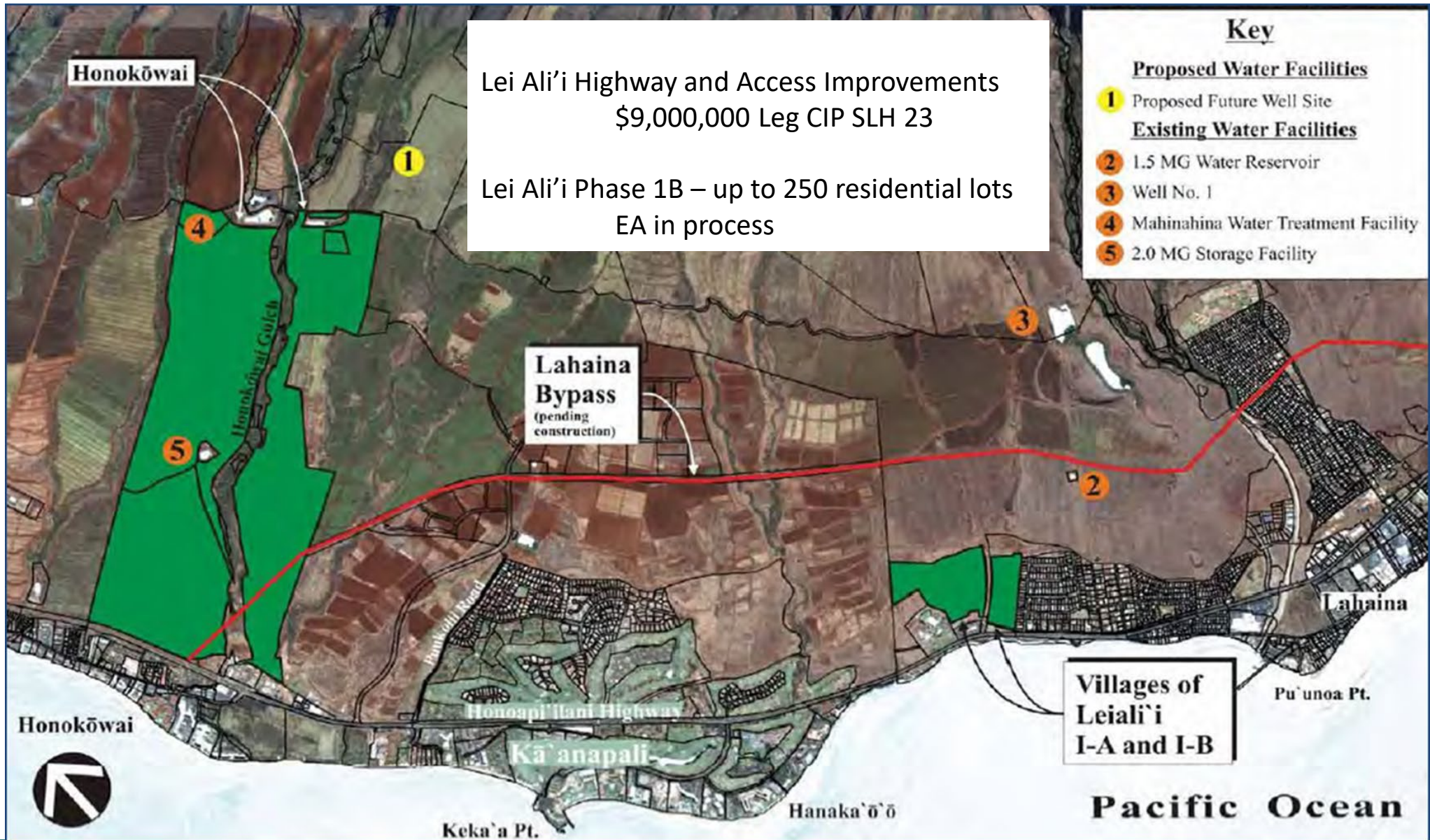
LEGEND

PHASE 1A:	46	RESIDENTIAL LOTS
PHASE 2A:	76	RESIDENTIAL LOTS
PHASE 2B:	61	RESIDENTIAL LOTS
PHASE 3:	76	RESIDENTIAL LOTS
PHASE 4B:	53	RESIDENTIAL LOTS
TOTAL:	312	RESIDENTIAL LOTS

KEOKEA-WAIOHULI SUBDIVISION



Villages of Leialii 1B Highway Improvements





Honokowai Subsistence Ag Lots Phase 1

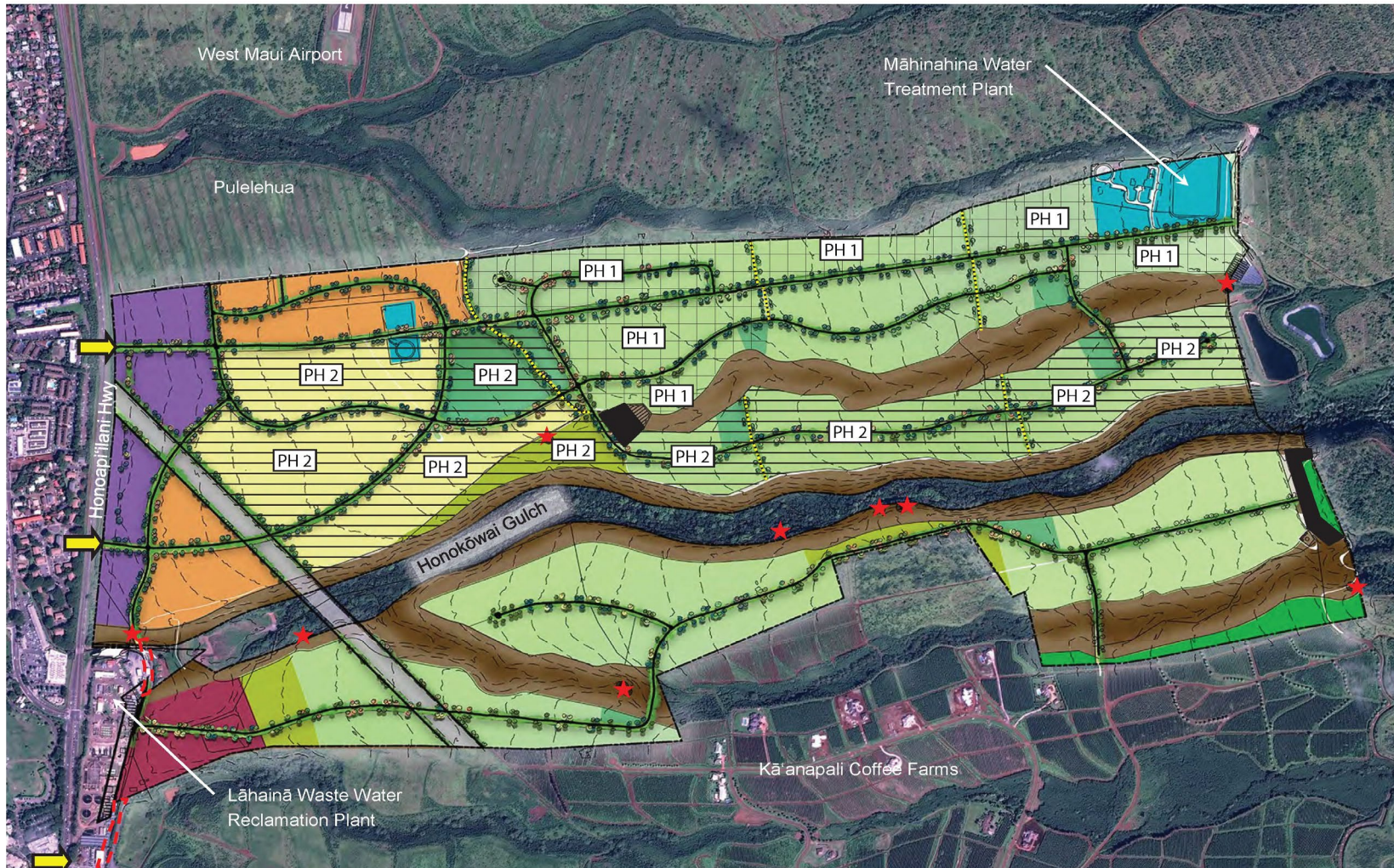
Honokōwai Beneficiary Community Master Plan

50 Sub Ag Lots

\$1,000,000

Design Phase

Leg CIP FY23



Legend

- Homestead Residential: Single Fa
- Homestead Sub-Ag: 1 to 2 acre lot
- Homestead Residential: Multi-Farr
- Homestead Supplemental Agricult
- Community Use: Agriculture
- Community Use: Parks
- Community Use: Commercial
- Conservation: Gulches and Buffers
- Industrial
- DOT's Proposed Lahaina Bypass
- County Facilities
- Walking Pathways
- Future Access Easement
- Cultural Sites
- Non-DHHL Lands
- Roadways
- Access Point



Pulehunui Development, Maui



Wastewater System, \$3.0 million
SLH 22 Additional funding
provided by Legislature



Pu'unani Homestead Subdivision, Maui

PU'UNANI HOMESTEAD SUBDIVISION

TMK: (2) 3-5-002-002 Wailuku, Maui

137 Turnkey lots, 24 Vacant lots

IFB planned for Fall 2022

\$ 4,000,000 Affordable Housing Credits



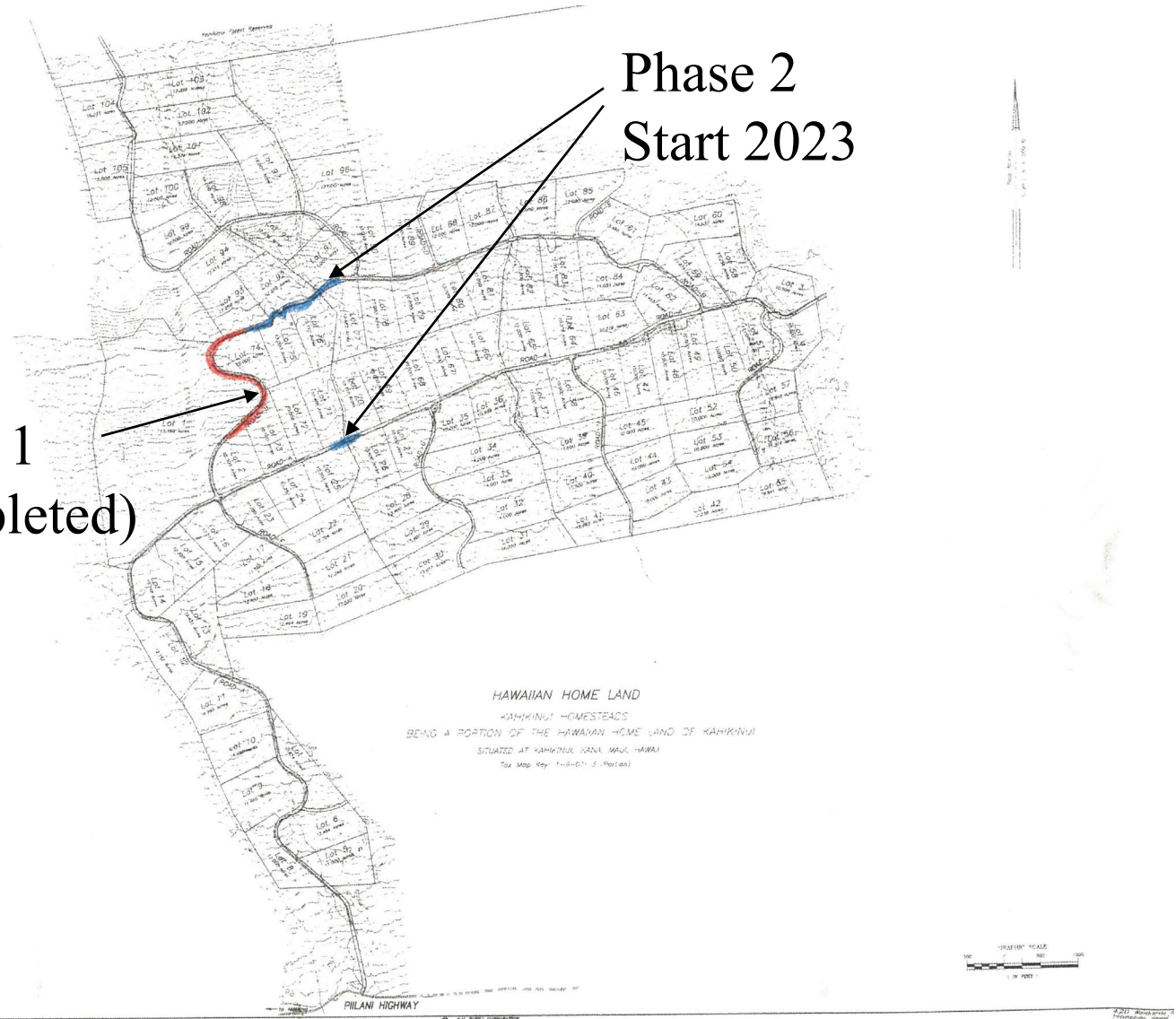


Kahikinui Road Improvements

- Road Improvements, Phase 2 IFB early 2023
- \$1,500,000 for construction

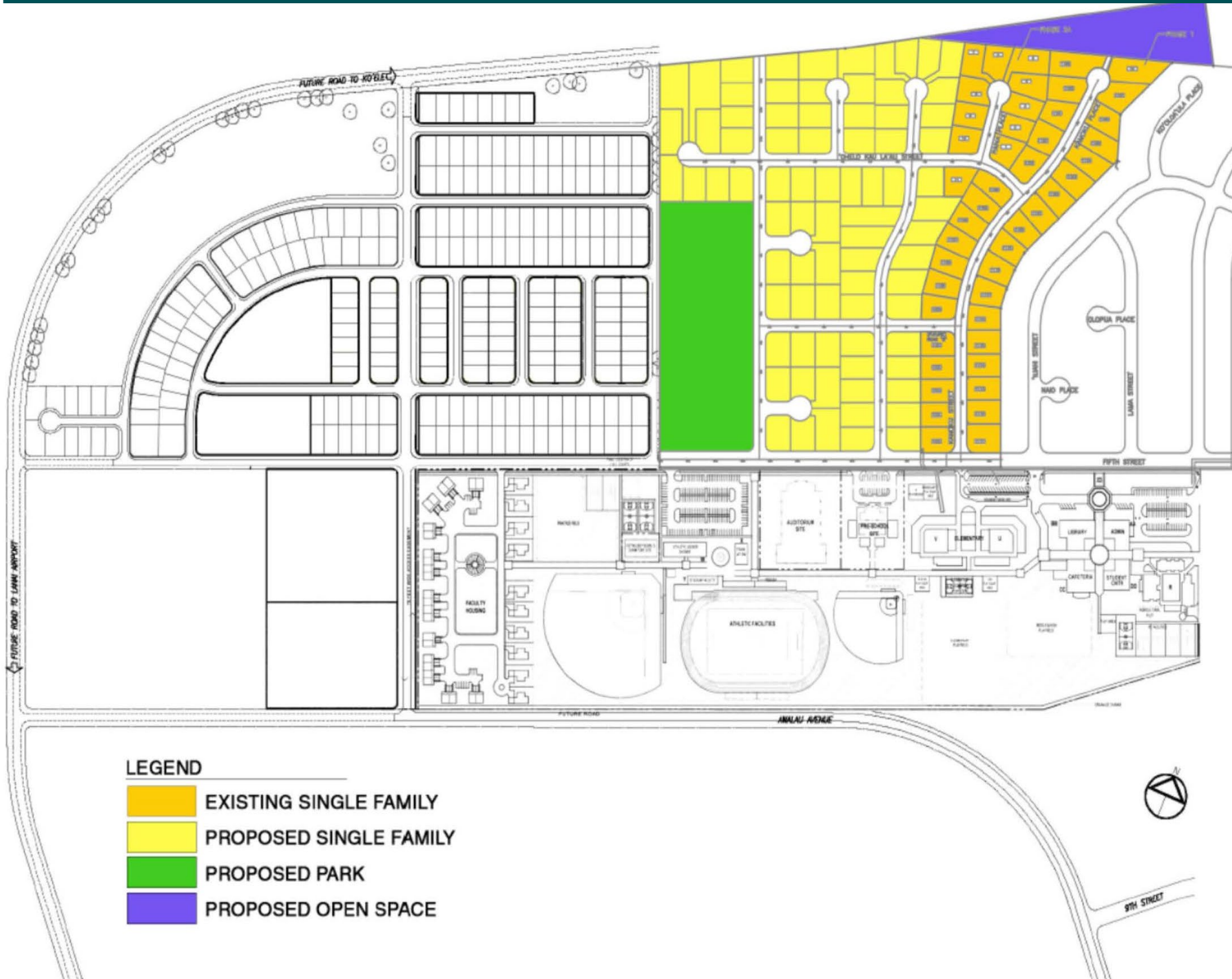
Phase 1
(completed)

Phase 2
Start 2023





Lanai Residence Lots Phase 2B/3

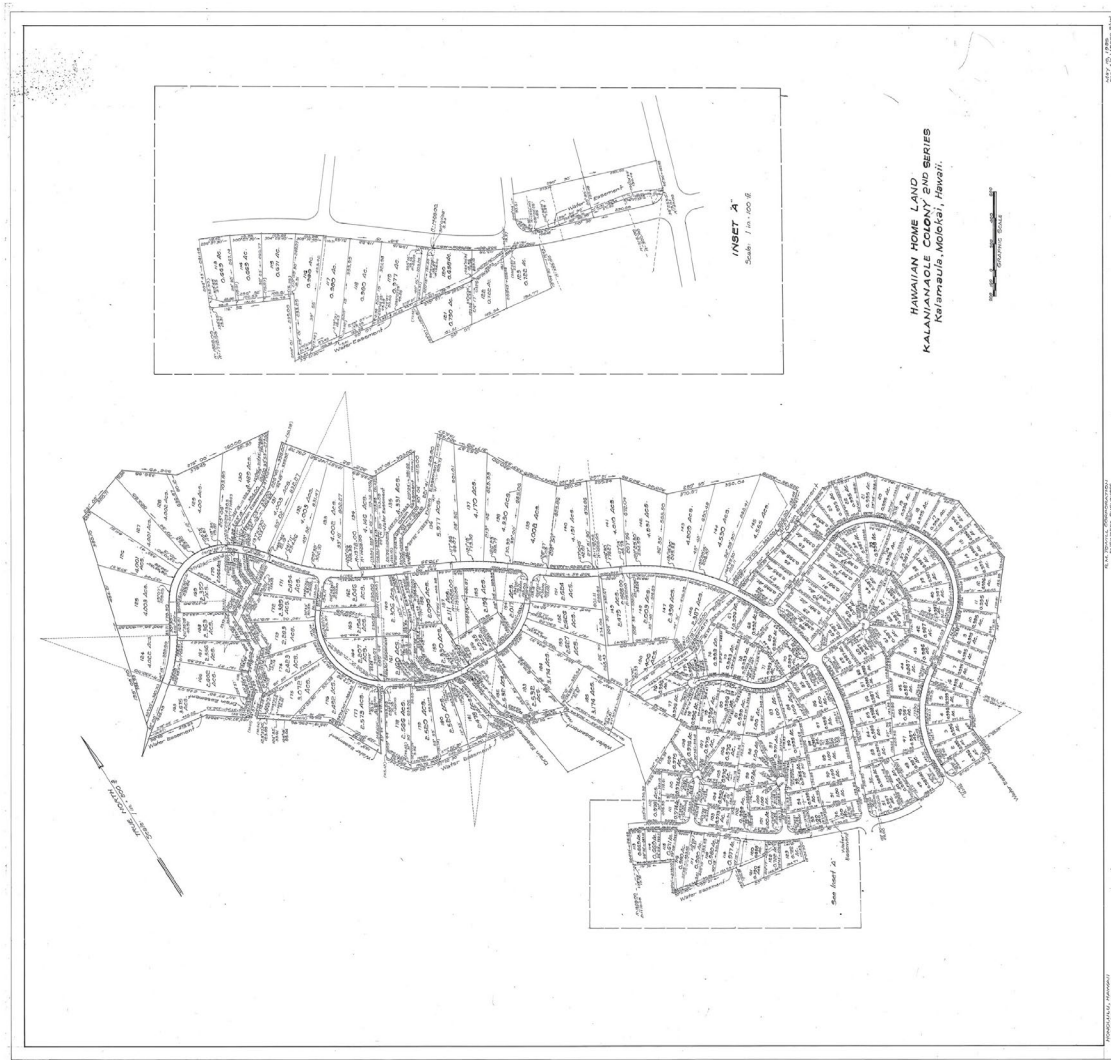


Offsite infrastructure planning for 75 new residential lots

Planning Consultant Selection FY23
Budget: \$750,000



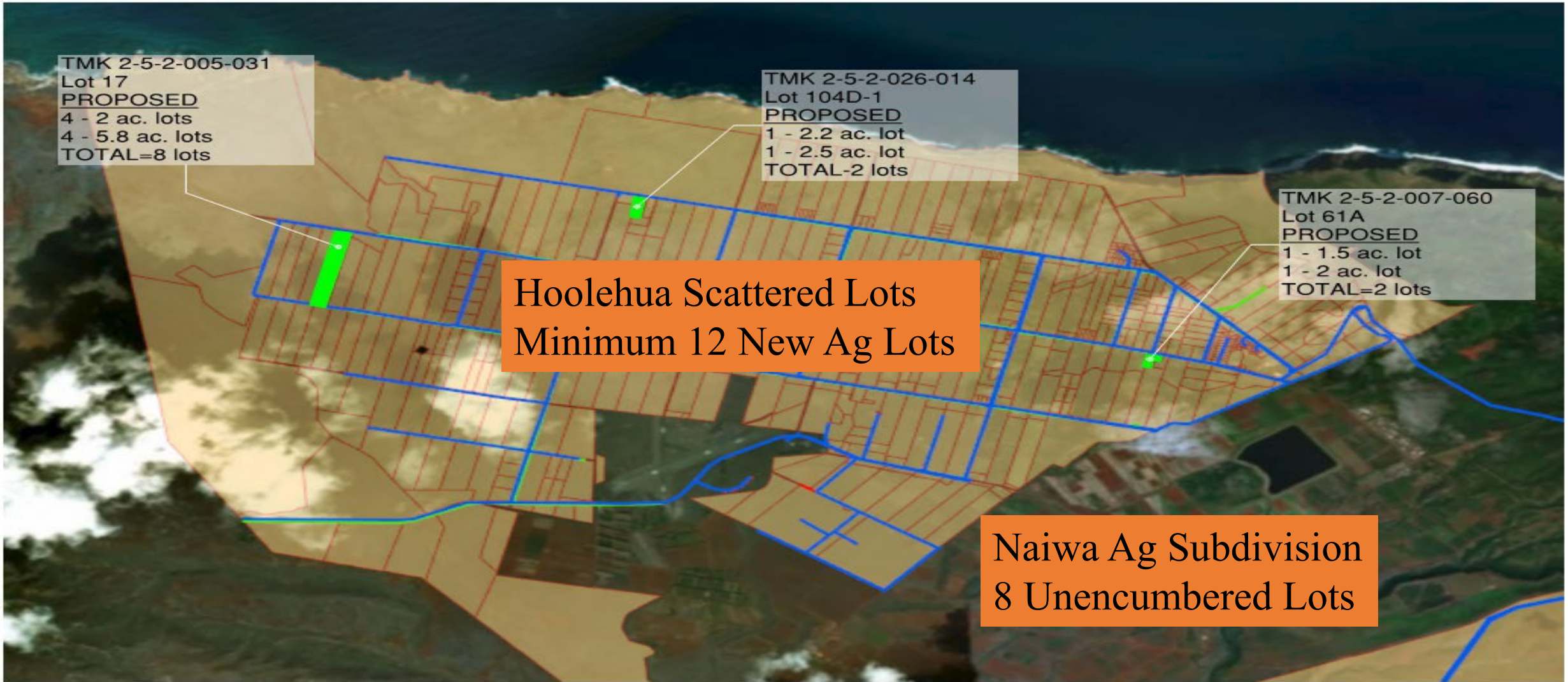
Kalamaula Ag Lots (Acceleration)



61 Agriculture Lots Start Planning and Design
FY23 \$1,000,000

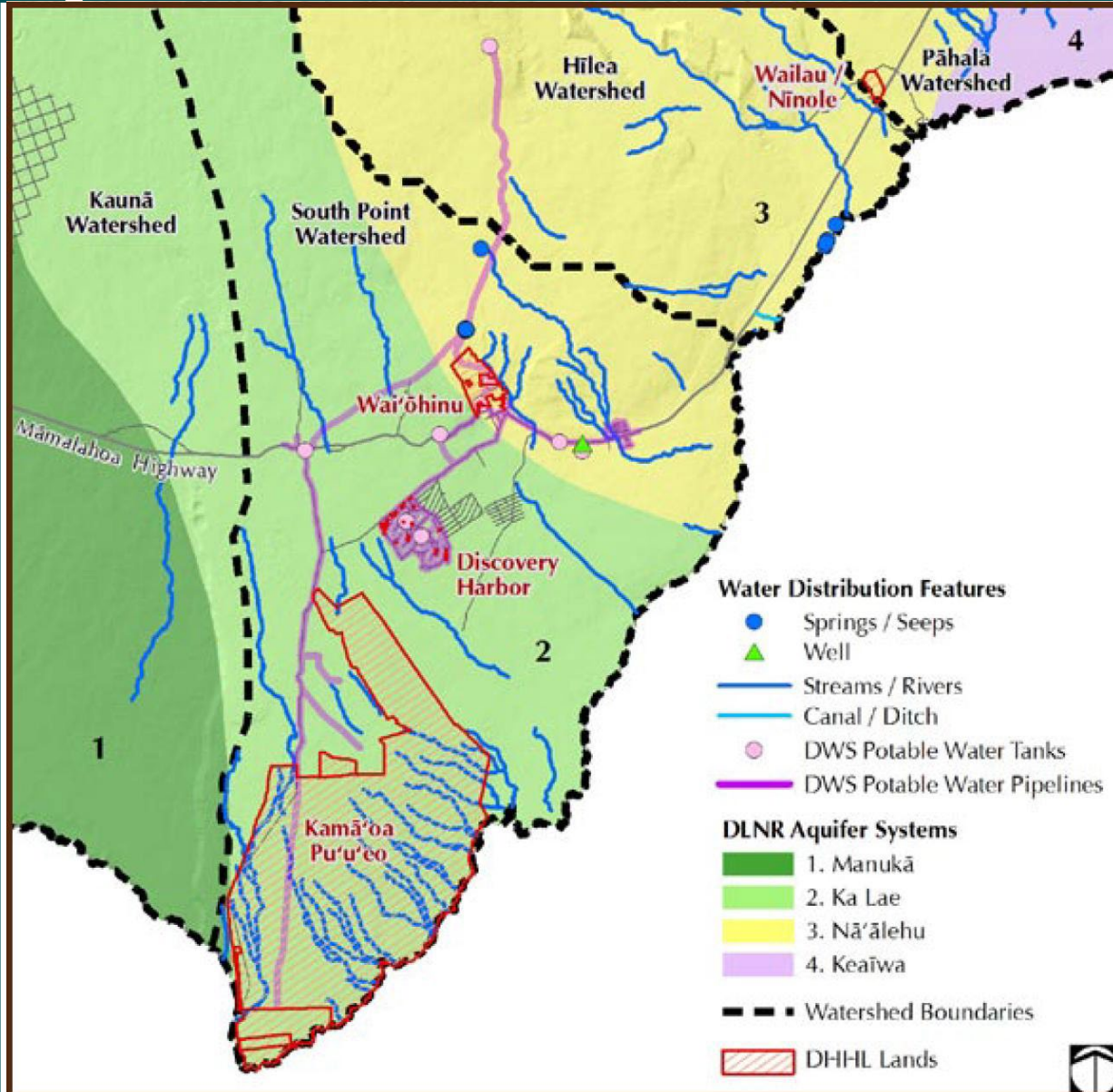


Hoolehua Agricultural Lots



HO'OLEHUA VACANT LOTS

Ka'ū Water System Improvements, Phase 2

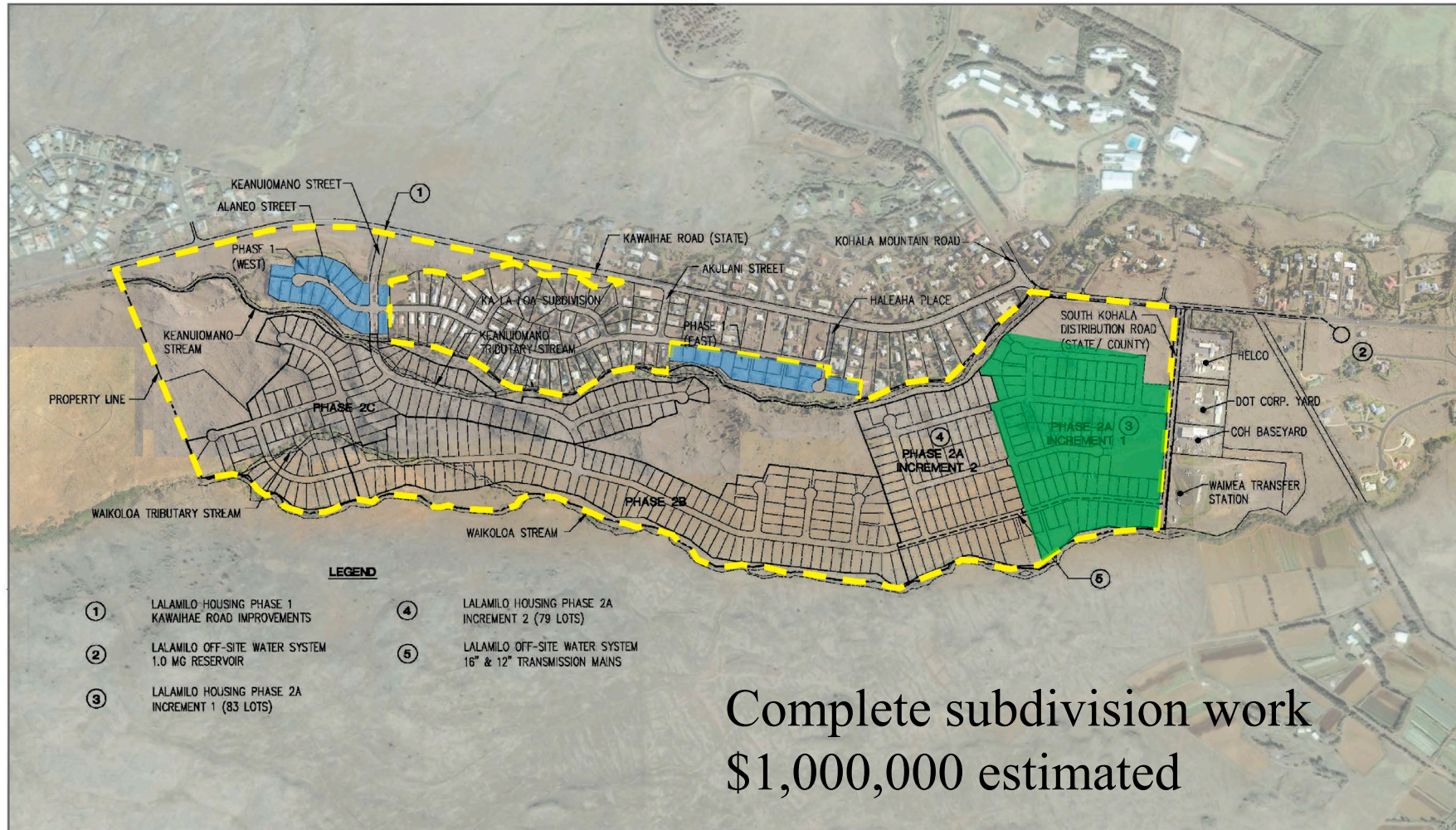


Ka'ū Water System Improvements, Phase 2
4 County of Hawaii Pressure Regulating Stations
Designs \$60,000 (Trust Funds)
Construction \$500,000 (Legislative Funds)

Pu'ueo Agricultural Lots
Initiate EA and Design
25 Lots
\$3,000,000 (Legislative Funds)



Lalamilo Housing Phase 2A, Increment 1



- Infrastructure completed (37 lots)
- Infrastructure started but on-hold (151 lots)

Source: Pictometry, Bing Aerial.
Disclaimer: This graphic has been prepared for general planning purposes only and should not be used for boundary interpretations or other spatial analysis.

LALAMILO GENERAL PLAN
Department of Hawaiian Homelands
Island of Hawai'i

North

Linear Scale (feet)
0 350 700 1,400

PBR HAWAII
& ASSOCIATES, INC.



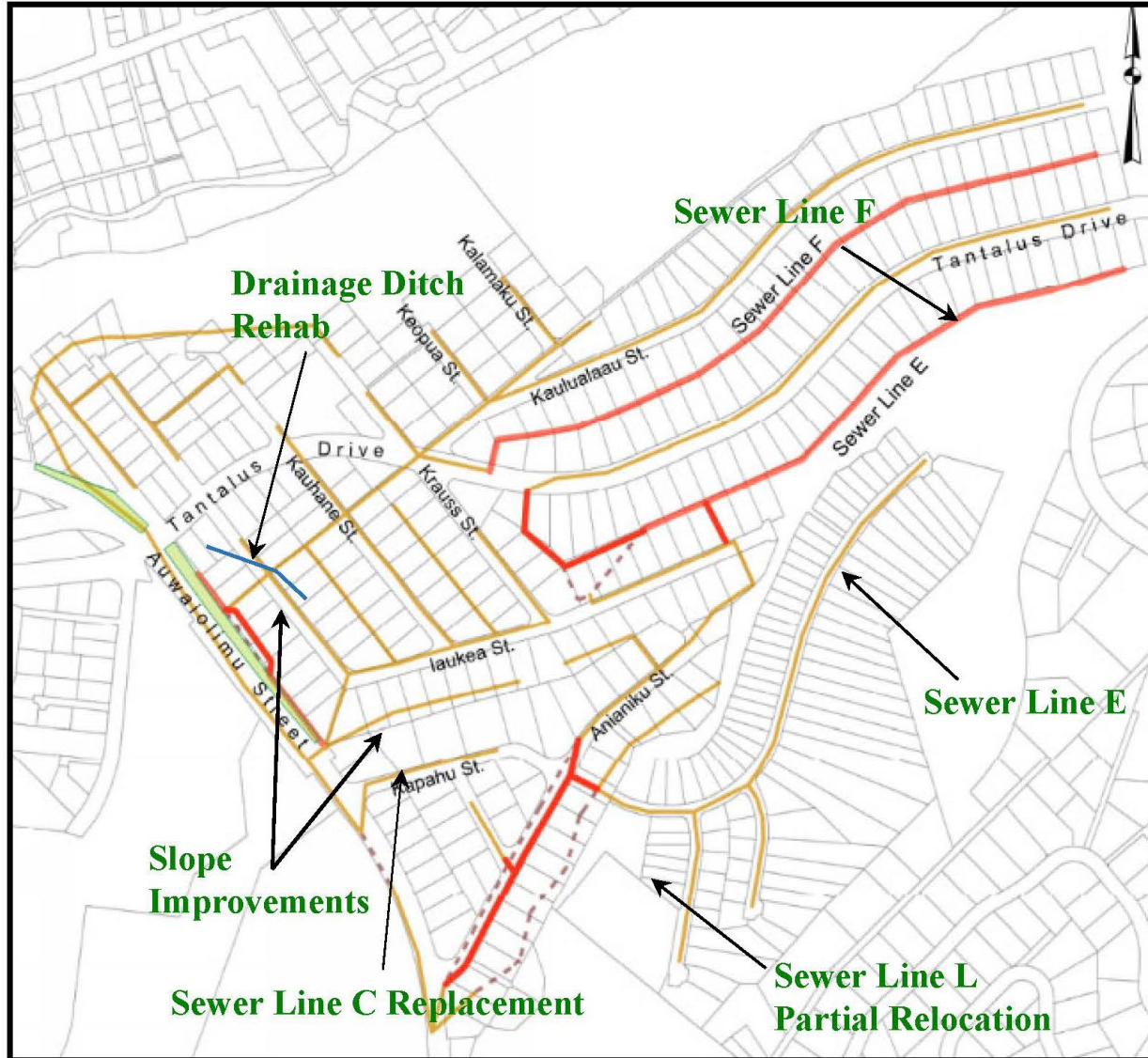
Purpose 4

Purpose 4

Repair, Maintenance, and Operating Costs
(Promoting thriving, healthy communities)



Papakolea Sewer Remediation



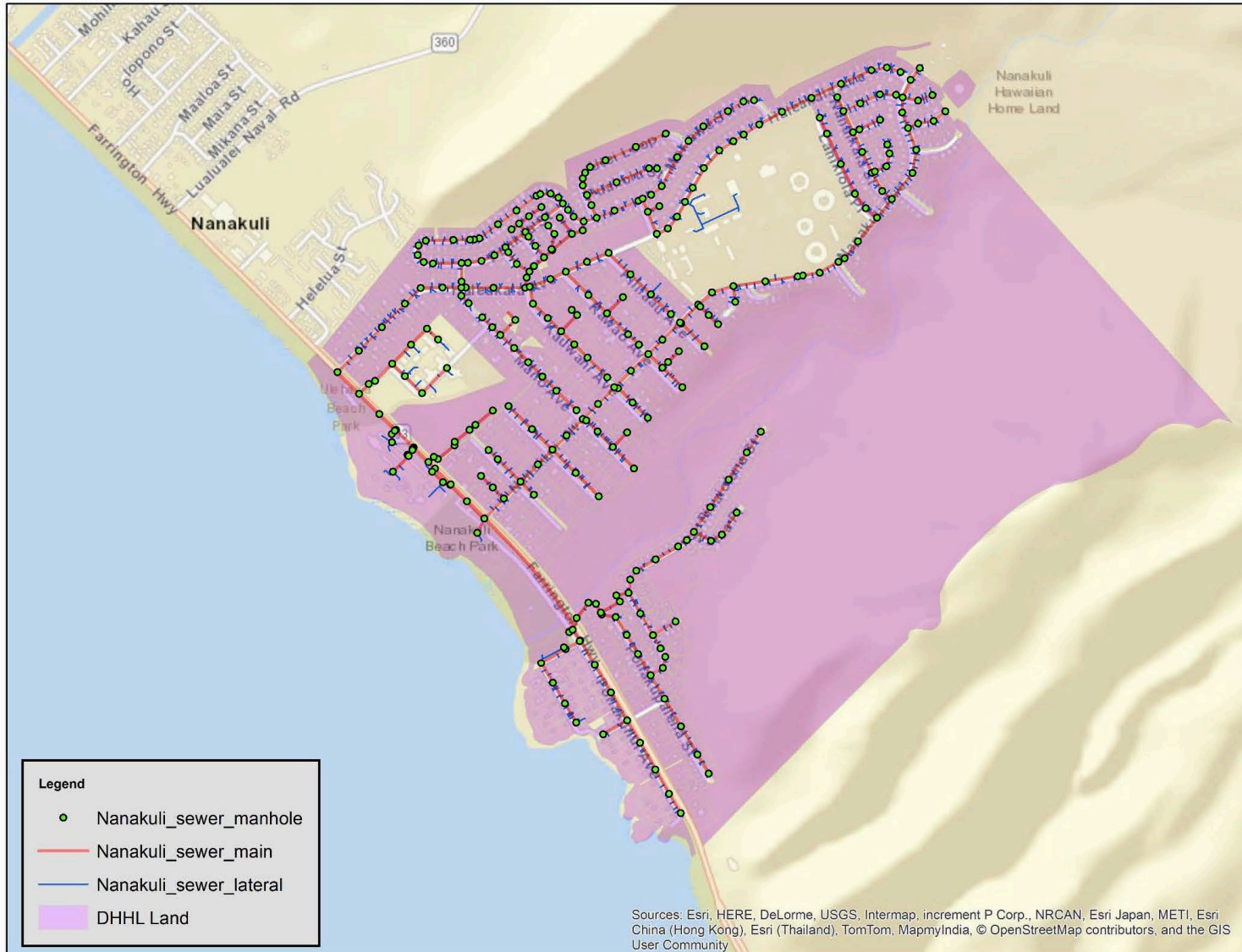
Phase 2A (East Portion)

IFB Spring 2023.

Estimated construction:
\$5 million



Nānākuli Sewer Improvements



Nanakuli Sewers

Approximately 120 lots impacted

Inspections completed 2020

Estimated Costs of Construction:

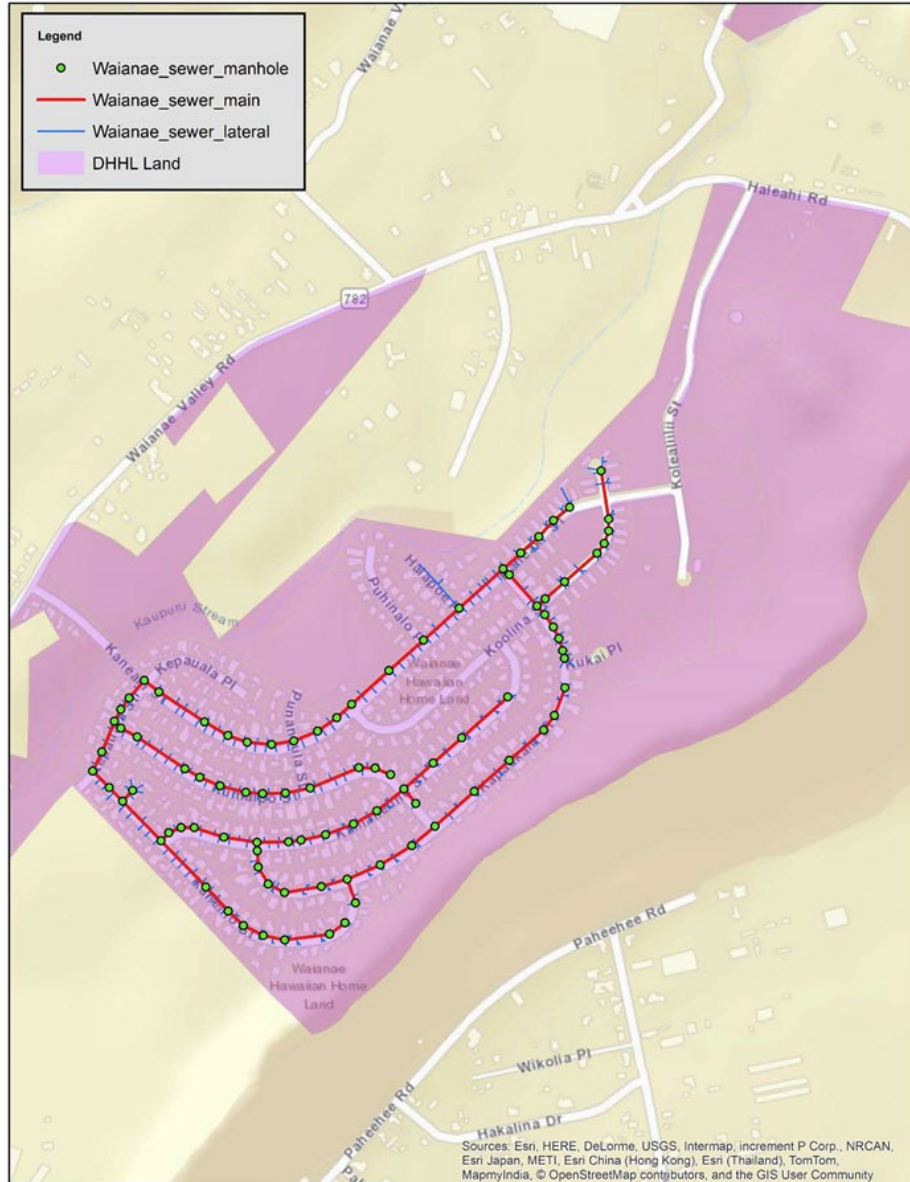
\$38.3 million

Proposed FY 2023 Budget:

Designs: \$800,000



Waianae Sewer Improvements



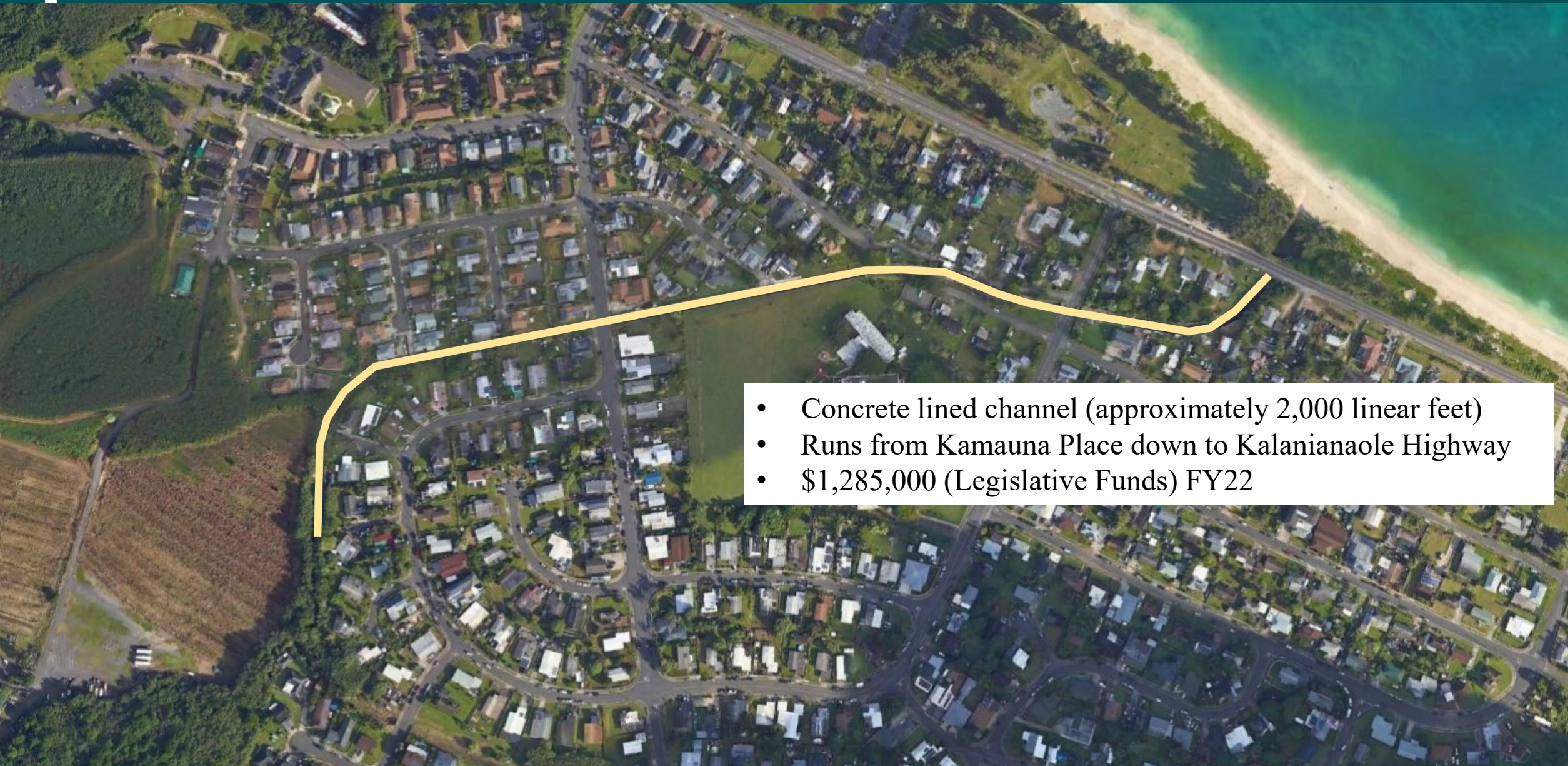
Waianae Sewer System

Approximately 100 lots impacted
Inspections conducted mid-2020
Design complete

Proposed FY2023 Budget:
\$5,000,000 (Legislative Funds)



Waimanalo Flood Control Channel Improvements

- 
- Concrete lined channel (approximately 2,000 linear feet)
 - Runs from Kamauna Place down to Kalanianaʻole Highway
 - \$1,285,000 (Legislative Funds) FY22



Waimanalo Sewer Improvements

Project Objectives

1. Fix sewer deficiencies identified through various field inspections
2. Upgrade existing DHHL sewers to the current City standards for ownership transfer to the City
3. Convert cesspools as required by Act 125 (SLH 2017) by 2050.

Summary

650 lots connected to City sewer system

80 individual onsite sewage disposal systems (OSDS)

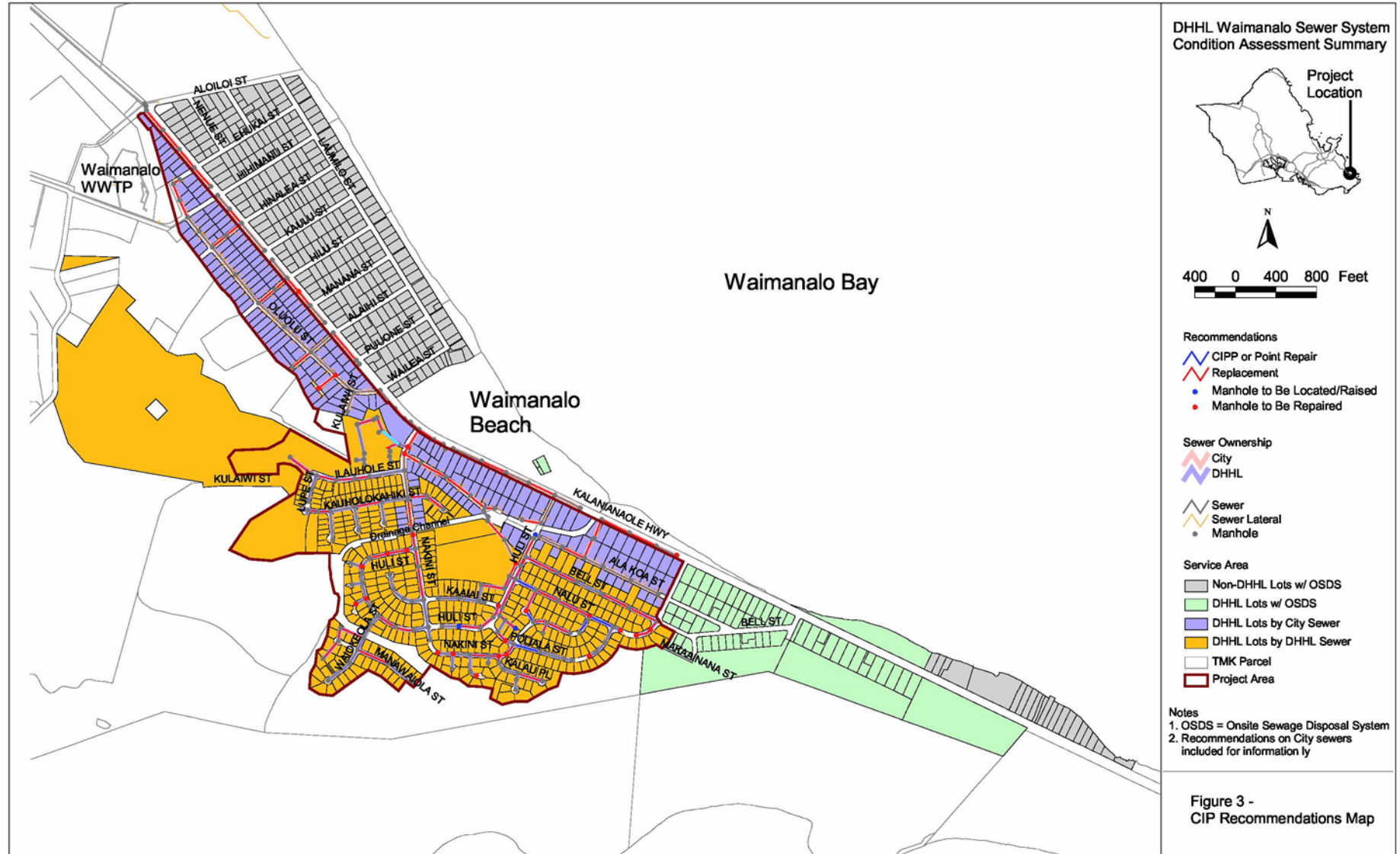
Remedial Actions

Repair/replace existing DHHL sewers (\$18 million)

Conversion of OSDS with pump station and new collector (\$12+ million)

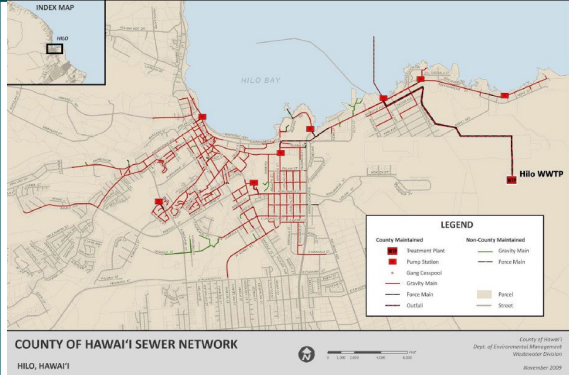
Proposed FY 2023 Budget

Designs: \$500,000 (Trust Funds)





Keaukaha Phase 1 Sewer Improvements



DRAWING INDEX		
SHT. NO.	DWG. NO.	DESCRIPTION
1	T-1.0	TITLE SHEET AND DRAWING INDEX
2	C-1.0	CIVIL NOTES
3	C-1.1	CIVIL NOTES
4	C-1.2	CIVIL NOTES
5	C-1.3	CIVIL NOTES, ABBREVIATIONS AND BMP DETAILS
6	C-2.0	SEWERLINE "A" PLAN AND PROFILE STA. 0+00 TO STA. 3+50
7	C-3.0	CIVIL DETAILS
8	C-3.1	CIVIL DETAILS

COH existing sewer lines



10 Affected lots – 4 vacant DHHL lots

PHASE 1 - KEAUKAHA SEWERLINE

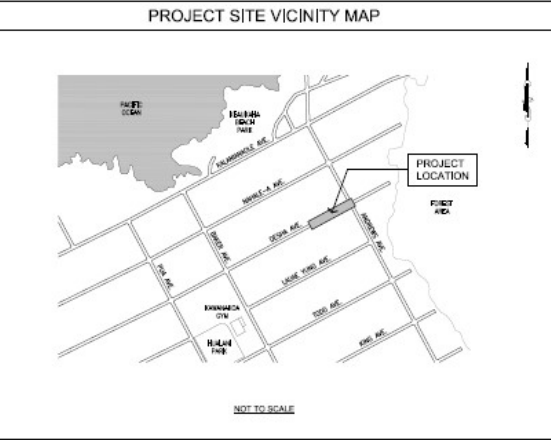
DESHA AVENUE CONNECT TO ANDREWS AVENUE 10" SEWERLINE
HILO, HAWAII 96720

DEPARTMENT OF HAWAIIAN HOME LANDS
LAND DEVELOPMENT DIVISION
91-5420 KAPOLEI PARKWAY
KAPOLEI, HI 96707



1	T-1.0	TITLE SHEET AND DRAWING INDEX
2	C-1.0	CIVIL NOTES
3	C-1.1	CIVIL NOTES
4	C-1.2	CIVIL NOTES
5	C-1.3	CIVIL NOTES, ABBREVIATIONS AND BMP DETAILS
6	C-2.0	SEWERLINE "A" PLAN AND PROFILE STA. 0+00 TO STA. 3+50
7	C-3.0	CIVIL DETAILS
8	C-3.1	CIVIL DETAILS

PHASE 1 - KEAUKAHA SEWERLINE
DESHA AVENUE CONNECT TO ANDREWS AVENUE 10" SEWERLINE
HILO, HAWAII 96720



CONSULTANTS

CIVIL ENGINEER:
OKAHARA AND ASSOCIATES, INC.
200 KOHOLA STREET
HILO, HAWAII 96720

LAND SURVEYOR:
ISLAND SURVEY
17 NAHAKALA STREET, SUITE 102
HILO, HAWAII 96720

APPROVALS

DIRECTOR OF DEPARTMENT OF ENVIRONMENTAL MANAGEMENT DATE _____
COUNTY OF HAWAII

TITLE SHEET AND DRAWING INDEX

NO.	DATE	BY	FOR

DATE: _____

SCALE: _____

IF THIS SHEET IS LESS THAN 36" X 24", IT IS A REDUCED PRINT. SCALE REDUCED ACCORDINGLY.

Scope of Work:
Instead of installing Septic Tanks, the new sewer line will allow for connection and assist with the closure of cesspools.

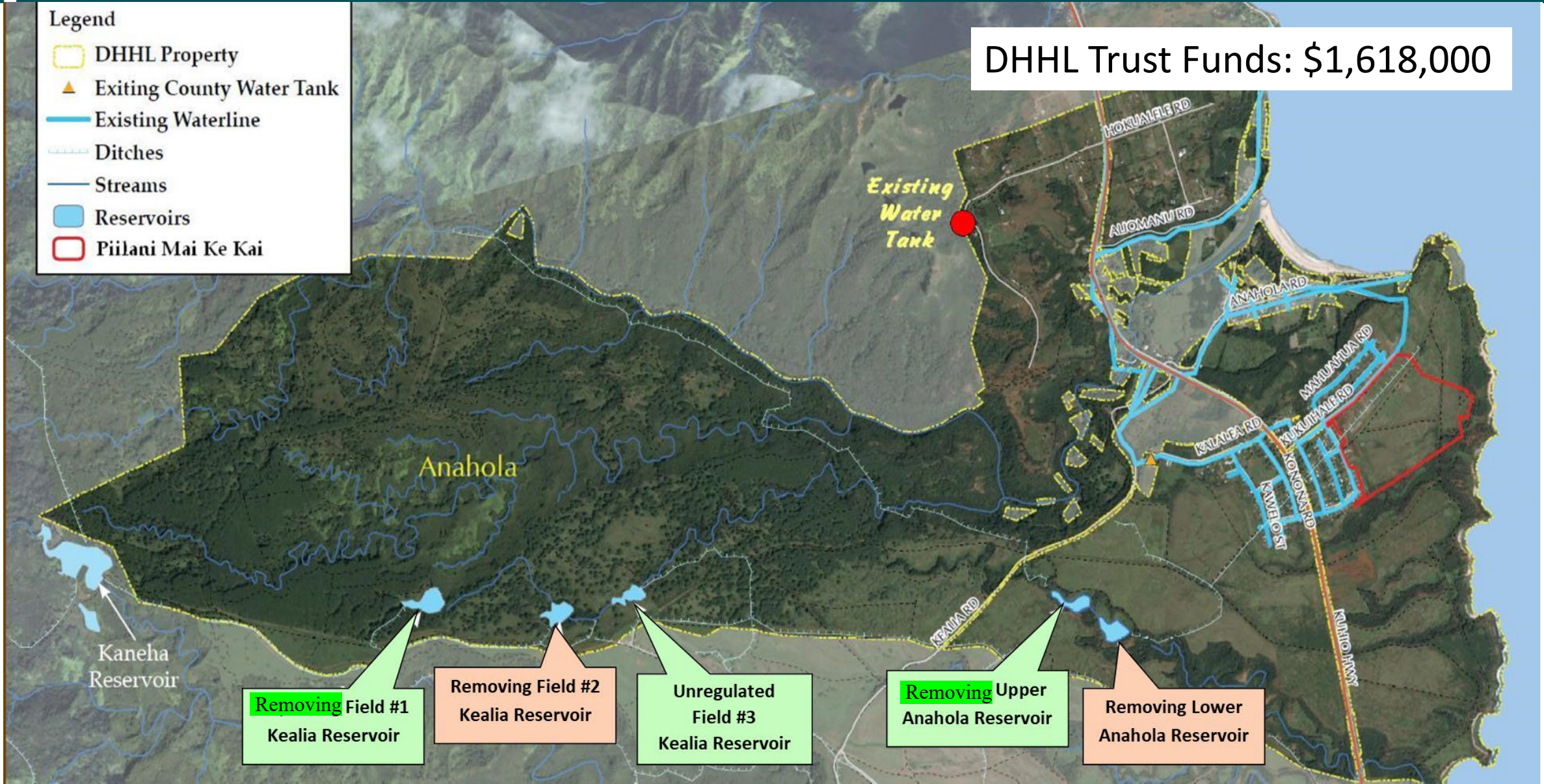
Schedule for Bidding in Fall - 2021
COST EST. \$300,000

Anahola Dam & Reservoir Improvements

DHHL Trust Funds: \$1,618,000

Legend

- DHHL Property
- Existing County Water Tank
- Existing Waterline
- Ditches
- Streams
- Reservoirs
- Piilani Mai Ke Kai

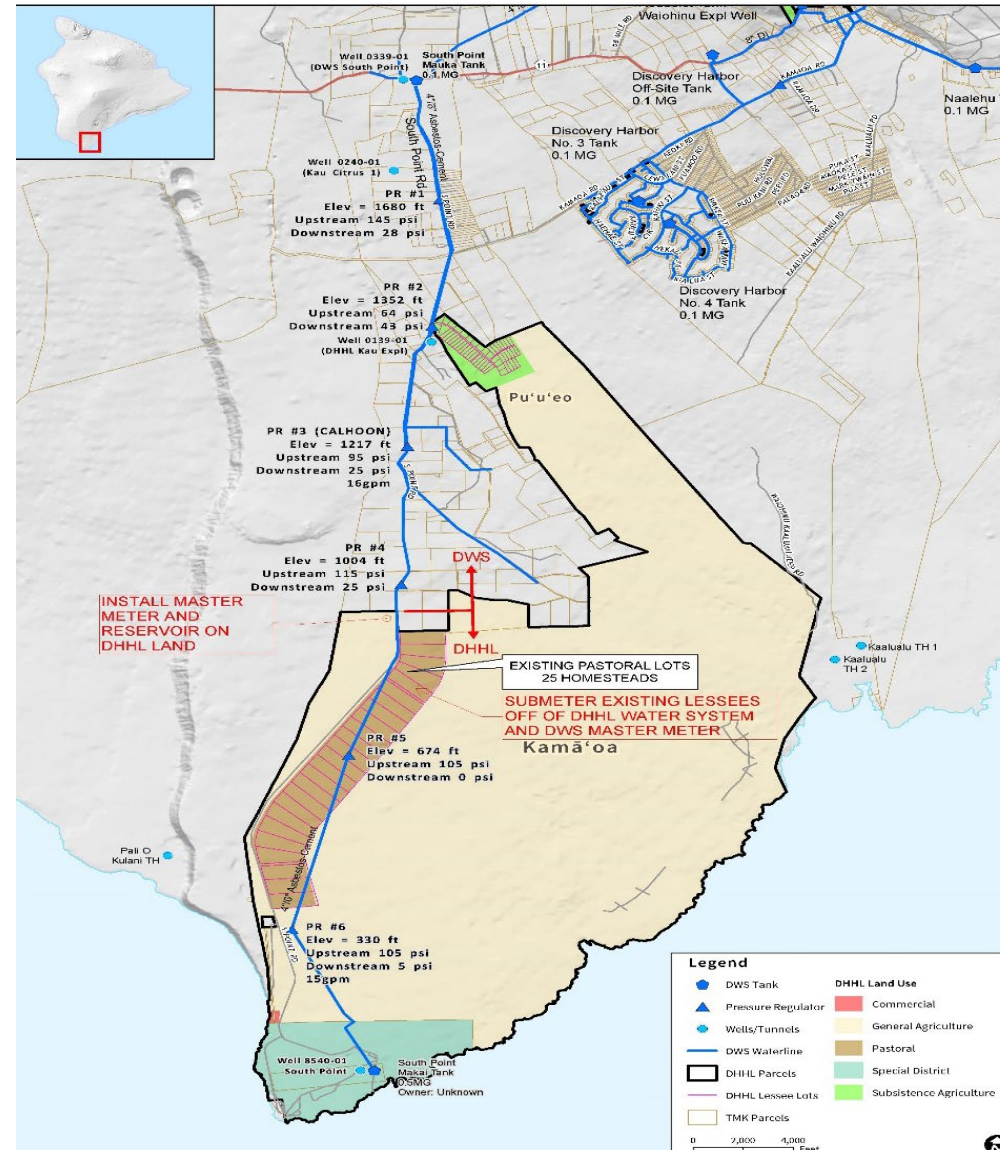




KAU WATER SYSTEM PHASE 3

Initiate Planning and Design
for new waterline within
South Point Road

\$2,900,000 Leg CIP FY23





Mahalo



DEPARTMENT OF HAWAIIAN HOME LANDS

www.dhhl.hawaii.gov