



Pana'ewa Regional Plan Update

Community workshop
April 30, 2016

2

Purpose of Today's Planning Workshop?

- **Opportunity for the Homestead Community to:**
 - **Take stock of what was accomplished with the last Regional Plan**
 - **Identify current issues, concerns, opportunities**
 - **Establish a 'Vision' for the future**
 - **Create solutions—programs, services, projects**

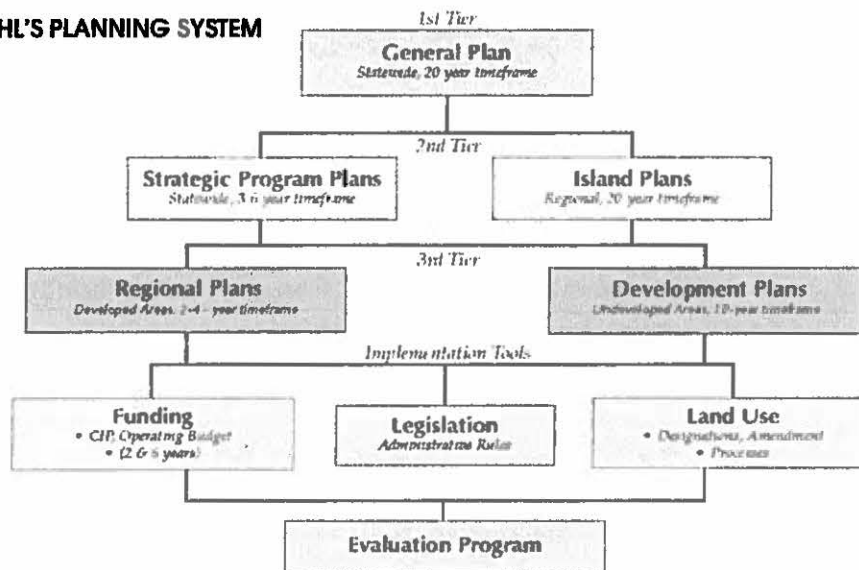
3

Agenda

9:00 - 9:20 am	INTRODUCTIONS
9:20 - 9:50 am	PLANNING CONTEXT
9:50 - 10:10 am	COMMUNITY CONTEXT--REPORTS FROM LEADERS
10:15 - 10:45 am	INFORMATION PACKET
10:45 - 11:45 pm	BREAK-OUT GROUP # 1
11:45 - 12:45 pm	BREAK-OUT GROUP # 2
12:45 - 1:15 pm	LUNCH
1:15 - 1:45 pm	THE RESULTS—Summary of Projects and Program Initiatives
1:45 - 2:30 pm	BREAK OUT GROUPS--Residential Lessees and Ag Lessees MAKING IT WORK—Level of Difficulty vs Impact Matrix
2:30-3:00 pm	NEXT STEPS

4

DHHL'S PLANNING SYSTEM



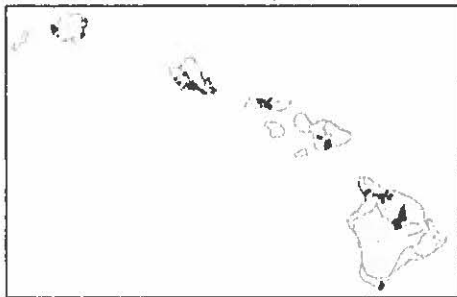
DHHL Planning System

5

General Plan

↓

Statewide Perspective



DHHL Planning Process Summary


- Established goals (what should be accomplished) and objectives (how are goals accomplished) for DHHL
- Long-term 20-year perspective; updated every 10 years

6

Strategic Plans

↓

Statewide Perspective




DHHL Planning Process Summary

- Translates General Plan policies and priorities into specific action plans for each program area
- Program areas include: Land Use, Housing, Economic Development, Agriculture and Pastoral, Water Resources, Resource Management, and Community Development
- Statewide focus
- 3-6 year timeframe

7

Island Plans

Island-wide Perspective



Establishes land use goals and objectives of the General Plan on each island

Identifies Island-wide Needs, Opportunities and Priorities

20- year planning horizon

Applies land use designations for land holdings on each island

DHHL Planning Process Overview

8

Land Use Designations

- Residential (Homestead)
- Subsistence Agriculture (Homestead)
- Supplemental Agriculture (Homestead)
- Pastoral (Homestead)
- General Agriculture
- Special District
- Community Use
- Conservation
- Commercial
- Industrial

DHHL Planning Process Overview

9

Regional Plans

↓

Community Perspective



CHPL Planning Resources Overview

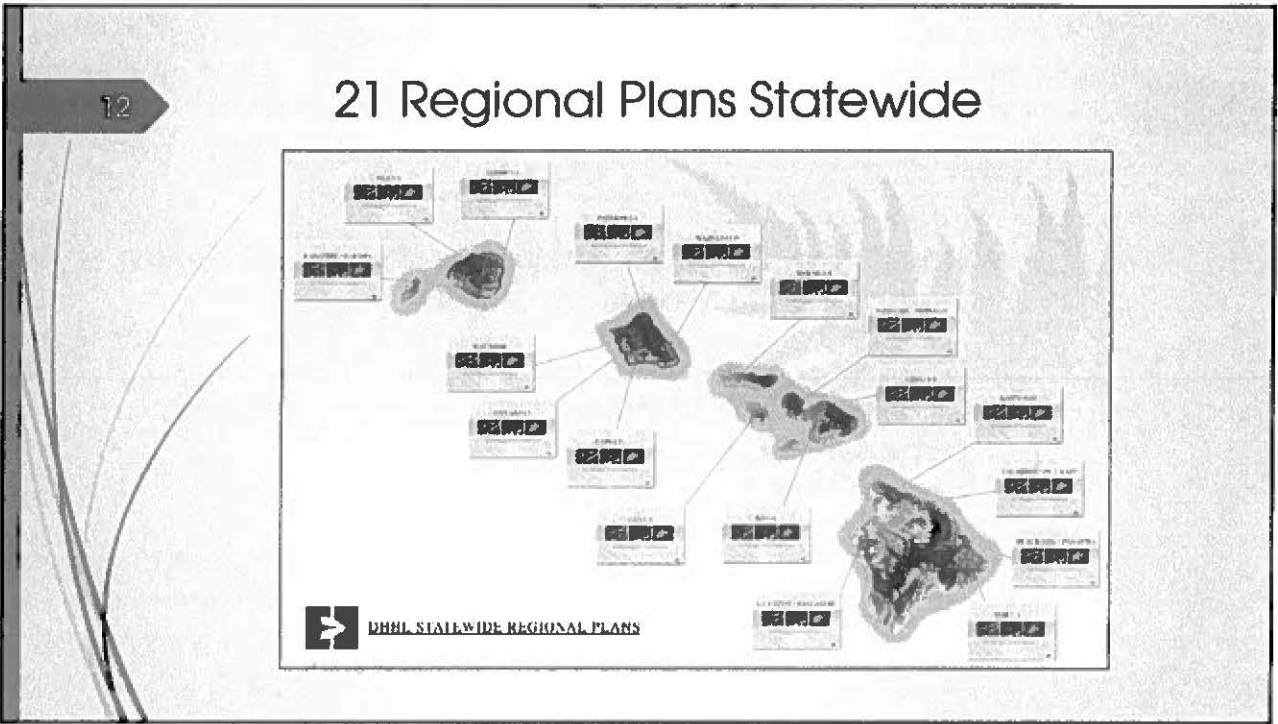
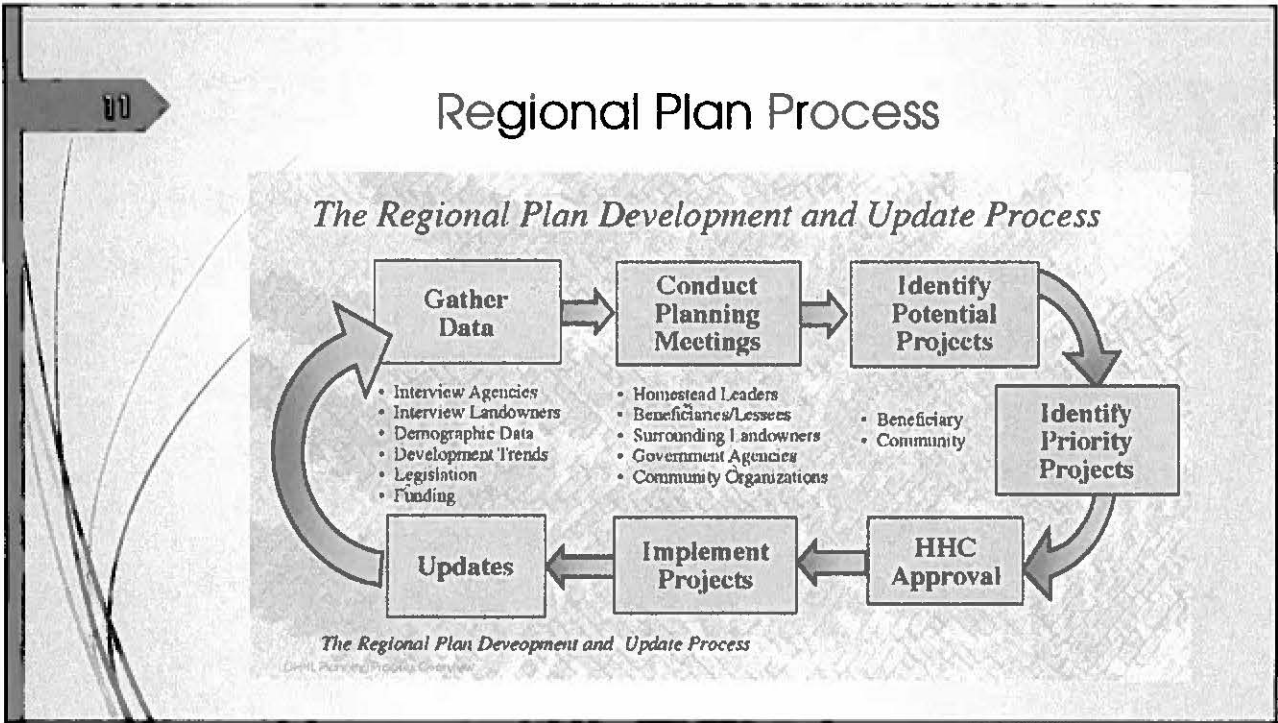
- For existing and new homestead communities
- Identifies the needs and desires of specific homestead communities
- Participation via homestead association, stakeholder, & community meetings
- Projects may include CIP, zoning change, land, programs

10

Purpose of a Regional Plan

- Identify the projects that are needed to help build or improve the region.
- Identify potential partnerships and information to carry out the projects.
- Help people see the benefits of the development projects and programs in the region.

CHPL Planning Resources Overview



13

2009 Pana'ewa Regional Plan & Priority Projects

Project	Status
Restore Pana'ewa Family Center	Completed July 2012
Establish working group to improve farming	Project has 12 components; completed 2 of 12 components
Develop Kamoleao	In progress
Generate income for Pana'ewa	Started
Improve road infrastructure	Partial (traffic calming and stop signs)

14

Next Gen Regional Plans

Infrastructure
Focus



Vision Oriented
+
Waitlist
Consideration

City of Planning Projects Overview



16

Purpose of Update

Who: DHHL updates the plan in partnership with the homestead community and other stakeholders

What: Implements the Island Plan by focusing on a specific region

Where: DHHL lands in Pana'ewa and

When: 3-5 year time horizon

Why:

- Previous plan prepared in 2009 (8 years ago); timely to update
- Reevaluate priorities
- Build partnerships to strengthen implementation

Pana'ewa Regional Plan Overview

17

Planning Timeframe

- March 8, 2016 Homestead Community Meeting # 1
- April 5, 2016 PCA Executive Board Meeting
- April 16, 2016 KPFA Executive Board Meeting
- April 30, 2016 Homestead Community Workshop # 2
- June 2016 Homestead Community Meeting # 3
Comment Period
- July 2016 Finalize Plan
- Fall 2016 Seek HHC Approval

Pana'ewa Regional Plan Update

18

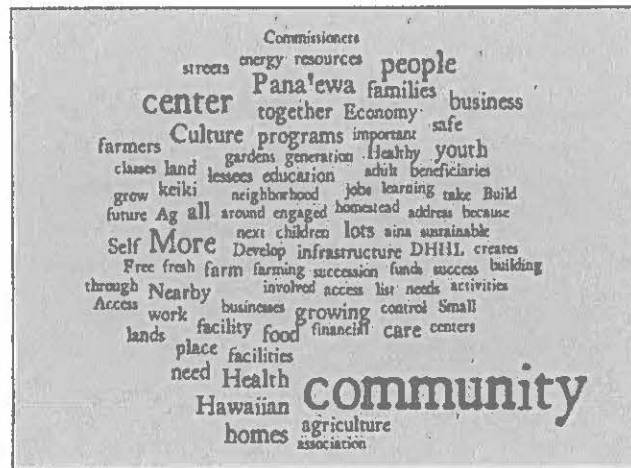
Community Meeting # 1 Overview

- **What** is your vision of success for Pana'ewa? What does a successful Pana'ewa look like?
- **Why** is this vision element important? Why did you choose it?
- **What** are your top 3 issues that you want addressed?
- **How** should the issue be addressed? How can this issue be solved?
- **Who** should be involved in developing the Regional Plan update?

Pana'ewa Regional Plan Update

19

Community Meeting # 1 Overview



Pana'ewa Regional Plan Overview

20

Vision of Success for Pana'ewa

The **Pana'ewa** Homestead is a connected **community** that promotes collective **health** and wealth, **succession** of **generational** knowledge and practices, and access to **resources** and **services** through community and **agriculture activities**.

Pana'ewa Regional Plan Overview

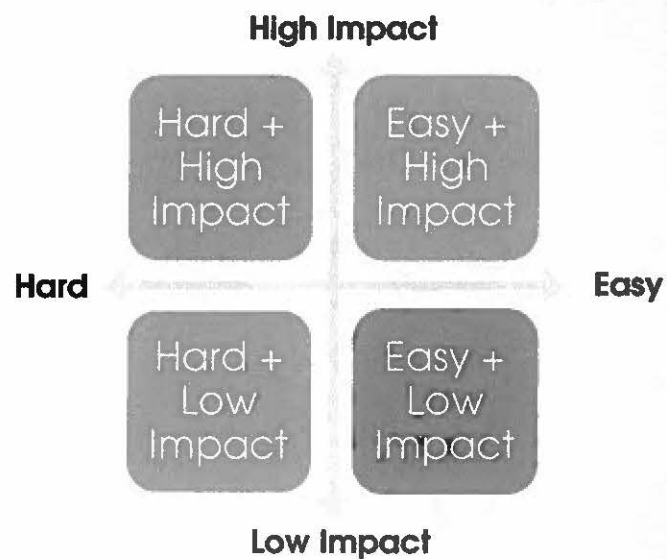
21

List of Projects

- Residential + Community Facilities
- Agriculture

Large Group Discussion

Impact vs Level of Difficulty



23

Next Steps

- Next meeting:
 - Purpose: Review Draft Plan
 - Date: June
- Communication Channels
 - DHHL Website:
 - <http://dhhl.hawaii.gov/po/beneficiary-consultation/2016-beneficiary-consultations/pana%20ca%20bbewa-regional-plan-update/>
 - DHHL Contact: Andrew Choy
 - Andrew.h.choy@Hawaii.gov or 808-620-9279

