



Department of Hawaiian Home Lands

BENEFICIARY CONSULTATION
Kalaupapa National Historic Park
Draft General Management Plan

May 26 & 27, 2015



Department of Hawaiian Home Lands

AGENDA

- 1. INTRODUCTIONS & PULE, MEA‘AI***
- 2. PURPOSE OF BENEFICIARY CONSULTATION***
“Encourage and collect comments, input and feedback on Kalaupapa National Historic Park Draft General Management Plan”
- 3. DHHL BACKGROUND ON KALAUPAPA***
- 4. PRESENTATION BY NATIONAL PARK SERVICE STAFF***
- 5. “I LIKE” / “I WISH” / “WHAT IF”***
- 6. OPEN DISCUSSION***



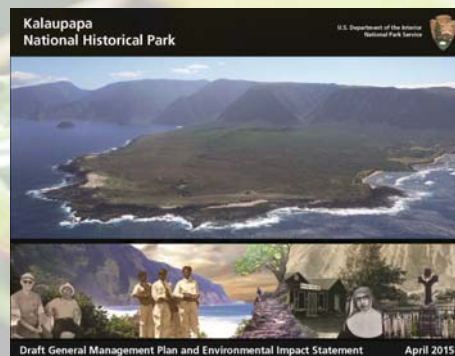
Department of Hawaiian Home Lands

MEETING HANDOUTS

1. AGENDA (on blue paper)
2. POWERPOINT PRESENTATION
3. COMMENTS FROM DHHL TO NPS (Letter dated 9/27/2011)
4. BENEFICIARY CONSULTATION #1 REPORT
5. MAP - MOLOKAI ISLAND PLAN LUD'S FOR KALAUPAPA-PALAAU
6. MAP - NPS MANAGEMENT AREAS, ALTERNATIVE "C"
7. DHHL LEASE WITH NPS FOR KALAUPAPA

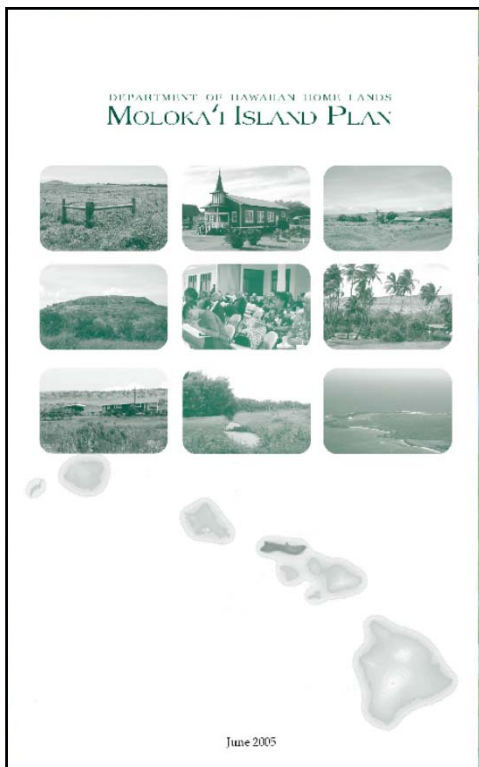
Purpose of Beneficiary Consultation

*Encourage and collect comments, input and feedback on
Kalaupapa National Historic Park Draft General
Management Plan*



DHHL Planning Activities

- *Molokai Island Plan – adopted by Hawaiian Homes Commission in 2005. Developed Land Use Designations (LUD's) for Kalaupapa*
- *Molokai Regional Plan – adopted by Hawaiian Homes Commission in 2010. Included discussion of Kalaupapa*



Moloka'i Island Plan

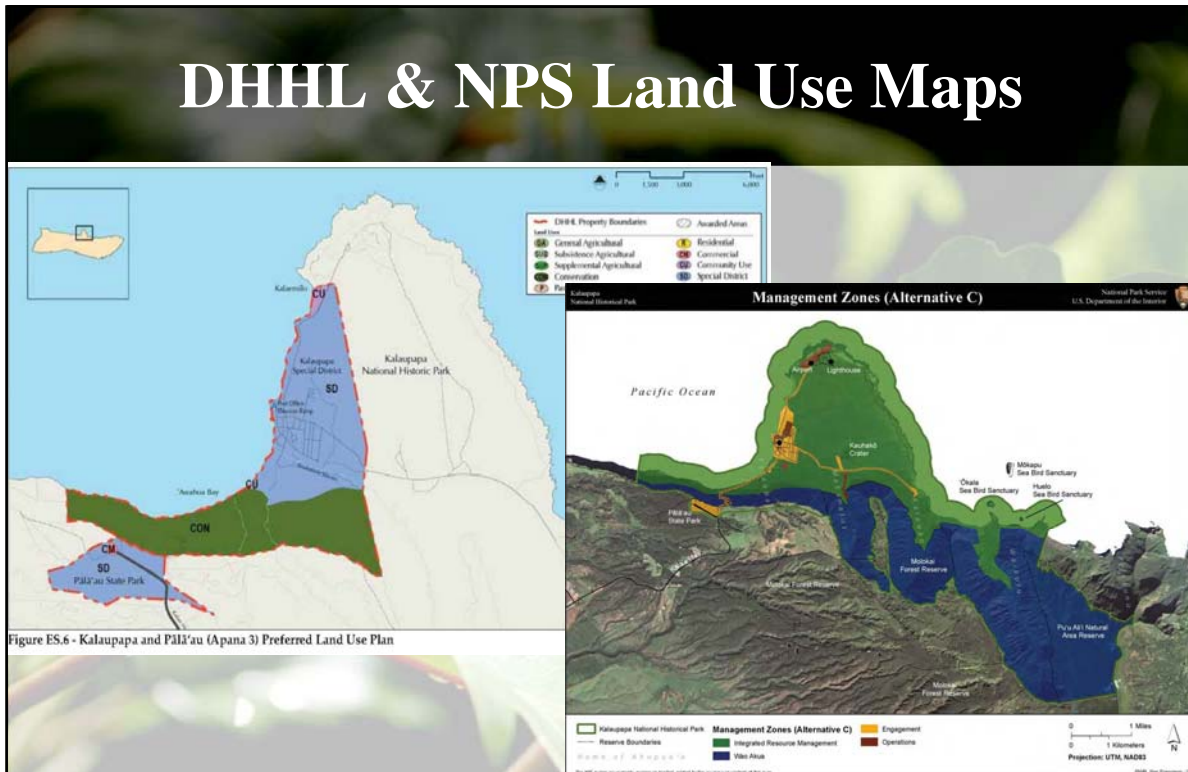
- 'Ualapu'e
- Kapa'akea, Makakupa'ia, Kamiloloa
- Kalama'ula
- Kalaupapa-Pālā'au
- Ho'olehua-Pālā'au

10 DHHL Land Use Designations

- Residential
- General Agriculture
- Subsistence Agriculture
- Supplemental Agriculture
- Pastoral
- Community Use
- Commercial
- Industrial
- Conservation
- Special District

Kalaupapa-Pālā‘au Area

- **Special District**
 - Kalaupapa: 621 acres
 - Pālā‘au Forest: 226 acres
 - **Conservation**
 - Cliffs: 609 acres
 - **Community Use**
 - Near Airport 3.5 acres
 - Fronting Awahua Bay 3.5 acres
 - **Commercial**
 - Pālā‘au 5 acres
- TOTAL 1,474 acres**



What is a Special District?

- Area with severe constraints (topography, slope, inundation zone, tsunami zone, flood, endangered species)
- Area with natural, cultural, or historic resources
- Area that needs specialized planning in order to develop
- Area that requires some conservation principles but can be used with compatible uses
- Area that plays a significant role for the ahupua‘a
- Area that is significant to entire island

Kalaupapa National Park

- General Lease
 - 1,247 acres
 - 50 year lease that expires in 2041
 - \$230,000 lease rent per year
- Millions invested in infrastructure improvements, building restorations, other initiatives
- NPS Annual Operating Budget of \$4.23 Million

Opportunities & Constraints

- Perpetuating the legacy of Kalaupapa
- Important cultural and natural resources
- Impact of canonization of Father Damien & Mother Marianne Cope
- NPS interest in long term preservation of area
- Limited/difficult access by trail, plane, barge
- Expensive to maintain, improve, or build new

Community Concerns – DHHL Plans

Island Plan

- Preserve legacy
- Respect patients
- Only for education
- Teach old ways
- NPS must work with Native Hawaiians

Regional Plan

- DHHL engage with NPS in planning
- Ensure traditional access and gathering rights
- Pālā‘au separate from Kalaupapa
- Ag homesteading
- Consult with beneficiaries

DHHL/Beneficiary Participation in GMP

Previous Beneficiary Consultation

- BC #1, on NPS Preliminary Alternatives
 - two meetings on Molokai, June 29 & 30, 2011
- Comment Letter from DHHL to NPS on Preliminary Alternatives dated Sept. 27, 2011, based on BC #1
- NPS comment period on Draft GMP began April 9, 2015
- NPS deadline for comments is June 8, 2015

What We Heard - BC #1

Actions Common to All Alt's

- Ensure resource mgmt. training & employment opportunities for (N)native Hawaiians
- Traditional practices – ensure access & gathering rights
- Special/exclusive access for beneficiaries, including lodging
- Native Hawaiian preference for concessions, transportation, etc.

Alternatives A-D

- Some prefer Alternative B – visitation stays limited
- Some in favor of homesteading, others not – too many burials
- Allow ag homesteading in Waikolu and Waihanau
- Manage Pālā'au separately from Kalaupapa
- Don't treat us like po'e haole

What We Heard – BC #1

Mana'o from Beneficiaries

- Create joint task force to work out details for a DHHL/OHA/NPS MOU
- Keep in use as a healthcare, kupuna facility
- Include pre-settlement history, traditional stories
- Respect mana'o from Kalaupapa 'ohana, spiritual nature of the place
- Promote reconnection of beneficiaries to the place, both pre- and post-settlement

What We Asked For: DHHL Comments on Preliminary Alternatives

- Molokai Island Plan – integrate Community Use areas (7 acres) into GMP, develop protocols for access, adaptive reuse of existing facilities, management/leasing by beneficiary organizations
- Respect trust obligation to rehabilitate native Hawaiians by providing opportunities to improve health & well being of beneficiaries. Develop protocols for exercising of traditional & customary practices and gathering rights
- Establish a visitor information and cultural facility at Pālā‘au State Park

What We Asked For: DHHL Comments on Preliminary Alternatives

- Alternative B supported by DHHL and Beneficiaries – emphasis should be on Kalaupapa as a Special Hawaiian Place
- All components of GMP need to highlight benefits to & inclusion of native Hawaiian people, history and culture
- Provide unique native Hawaiian stewardship component. Stewardship & access to natural and cultural resources is essential to protect and preserve cultural practices, traditions and protocols.
- Hire native Hawaiian Cultural Consultants to advise NPS & provide management level employment opportunities.
- Allow overnight visitation for stewardship purposes only

Kalaupapa Draft GMP Presentation

National Park Service Staff:

Erika Stein Espaniola
Superintendent

Leslie Kanoa Nae'ole
Management Assistant

*******Exercise*******

“I Like”
“I Wish”
“What If”

Open Discussion

- What new ideas came out of the exercise?
- What things may we have missed?
- What is your mana‘o on Alternative C?

Open House

There is another opportunity to share your mana‘o
or just talk story with DHHL:

Open House

May 27, 2015 (Tomorrow)

Kūlana ‘Ōiwi

9:00 a.m. – 12:00 p.m.

Contact Information

**M. Kaleo Manuel, Acting Planning Program
Manager**

Kaleo.L.Manuel@hawaii.gov

(808) 620-9481

Nancy M. McPherson, Planner

Nancy.M.McPherson@hawaii.gov

(808) 620-9519

****Deadline for Comments: June 25, 2015****

Mahalo for coming!!

