



HAWAIIAN HOME LANDS
HAWAIIAN HOMES COMMISSION
DEPARTMENT OF HAWAIIAN HOME LANDS

Kalāwahine, Kewalo, & Papakōlea Community Meeting

July 21, 2014
Papakōlea Community Center



HAWAIIAN HOME LANDS
HAWAIIAN HOMES COMMISSION
DEPARTMENT OF HAWAIIAN HOME LANDS

DHHL Update



HAWAIIAN HOME LANDS
HAWAIIAN HOMES COMMISSION
DEPARTMENT OF HAWAIIAN HOME LANDS

Chair's Message

2014 Initiatives

- **Focus Area 1: Affordability**
- **Focus Area 2: Agriculture**
- **Focus Area 3: Natural Resources**
- **Focus Area 4: Financial Stability & Improved Operations**
- **Focus Area 5: Community Development**

Focus Area 1: Affordability

- HALE Program launch
- More options for families with new lease offerings
- “Rent with Option to Purchase” project in Kona (La‘i ‘Ōpua)

Focus Area 1: Affordability

Under Development -- Exploring How To

- “Ohana Zoning” allowing more than one unit on a residential lease
- Kupuna Rental Housing (O‘ahu)
- Assisted Living Facility (Moloka‘i) – Pilot Project

Focus Area 2: Agriculture

- Use the land already developed
- Assessment of existing unawarded agricultural lands in DHHL's inventory

Under Development -- Exploring How To

- Partnerships with Department of Agriculture/
Agricultural Development Corporation

Focus Area 3: Natural Resources

- DHHL Water Policy
- Water Assessment Studies – Existing communities
- Water Rates Study (target summer launch)
- Assert DHHL's water rights
- Maui Energy Opportunities

Focus Area 4: Financial Stability & Improved Operations

- Clarification on county roles/responsibilities / Reduce burden on DHHL financial resources
- Increase earnings -- real estate assets
- Improve servicing for the beneficiary

Under Development -- Exploring How To

- Increase earnings – Financial assets

Focus Area 5: Community Development

- Evaluation of Kulia and economic development grants
- Focused capacity building (due to limited funds)
- Native Hawaiian Development Program revisions – What is DHHL's role?

Papakolea Initiatives

Sewers

- HB866 was passed by the legislature and signed into law by Governor Abercrombie as Act 227, clarifying the counties' ownership of and responsibility for certain existing sewer systems and facilities servicing Hawaiian Home Lands.
- No CIP funding for sewers was allocated during the 2014 legislative session.
- Negotiations with C&C is ongoing.

Papakolea Initiatives Continued

Slope Stabilization

- Received authorization from the HHC to utilize \$4M from DHHL Trust Funds for slope stabilization of Awaialimu Slope.

Papakolea Initiatives Continued

CIP from Legislature

- DHHL will utilize \$1M in construction funding from the 2013 Legislative budget for critical spot repairs and to complete and finalize design plans for replacement of two major sewer lines within Papakolea.



HAWAIIAN HOME LANDS

HAWAIIAN HOMES COMMISSION
DEPARTMENT OF HAWAIIAN HOME LANDS

Planning Office Update

Planning Office Update

- 1. Beneficiaries**
- 2. Lands**
- 3. Plans**
- 4. Planning Projects**

Native Hawaiian Beneficiaries

Applications

42,999 Statewide

31.5% O'ahu Applications

Lessees

9,844 Statewide

43.5% O'ahu Lessees

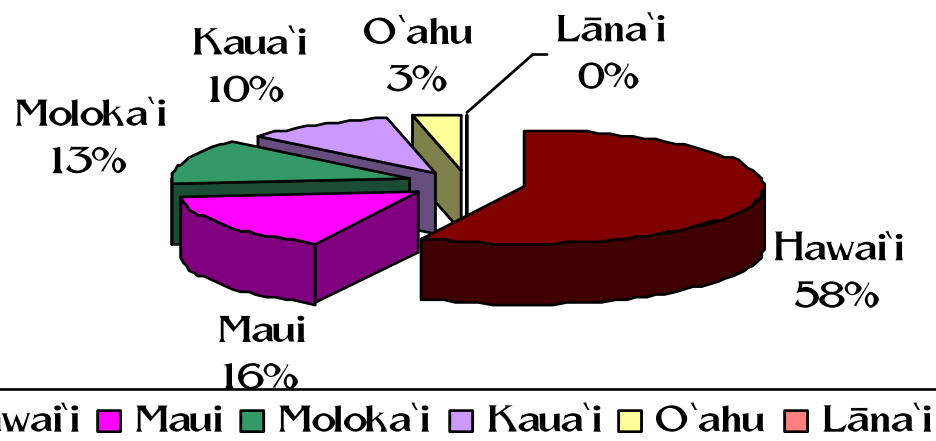
WAIT LIST	APPLICATIONS
Residential	10,112
Agricultural	3,443
Pastoral	n/a
TOTAL O'AHU:	13,555

AREA	LESSEES
Papakōlea	64
Kewalo	251
Kalāwahine	92
TOTAL, TOWN (9.5%)	407

Our Lands...

DHHL Statewide Inventory

Hawaiian Home Lands Trust
Percent Acres by Island



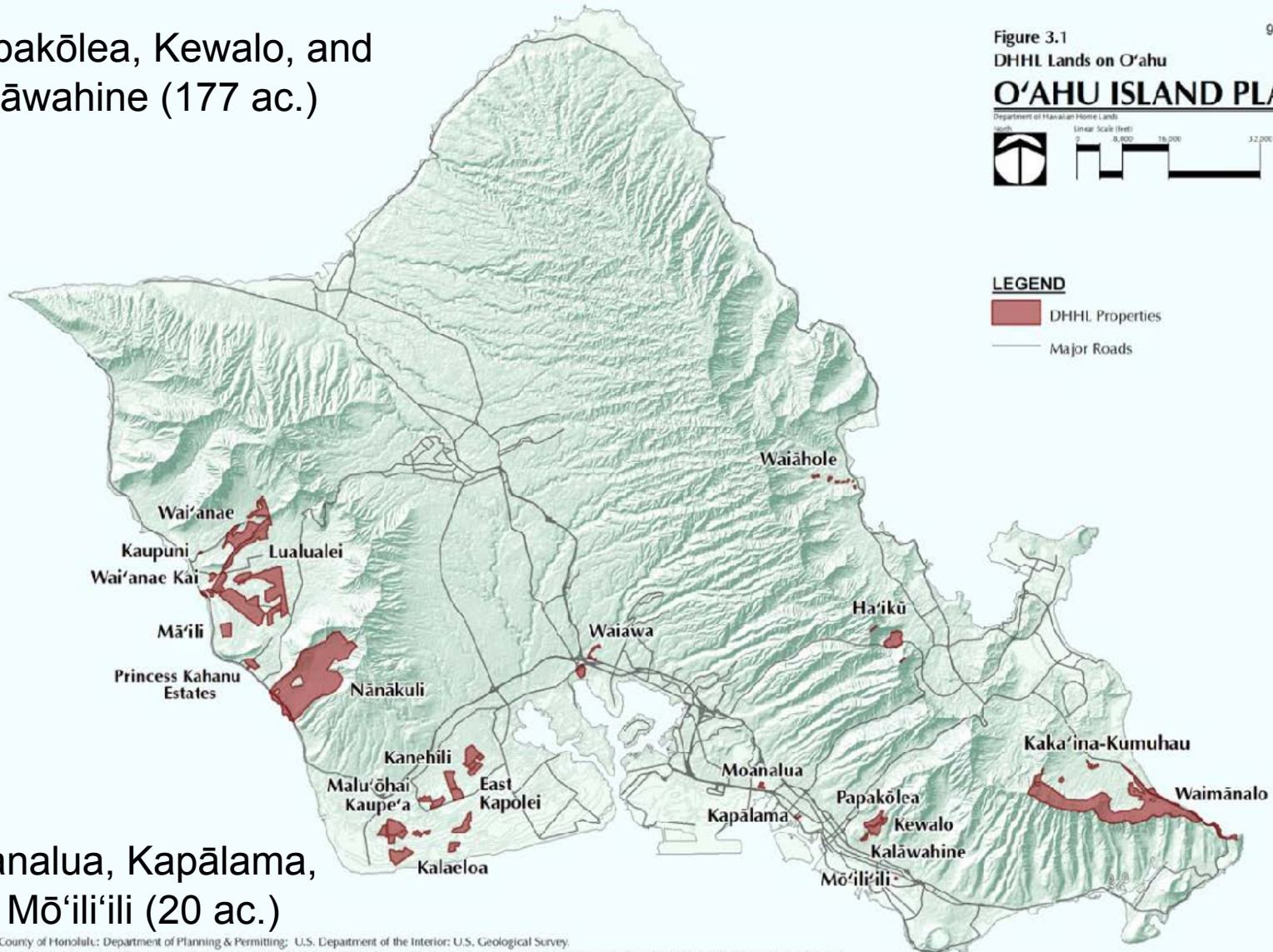
ISLAND	ACRES
Hawai'i	117,551
Maui	31,904
Moloka'i	25,748
Kaua'i	20,575
O'ahu	8,154
Lāna'i	50
TOTAL	203,982

DHHL Lands, Kona Moku

197 acres (10%)

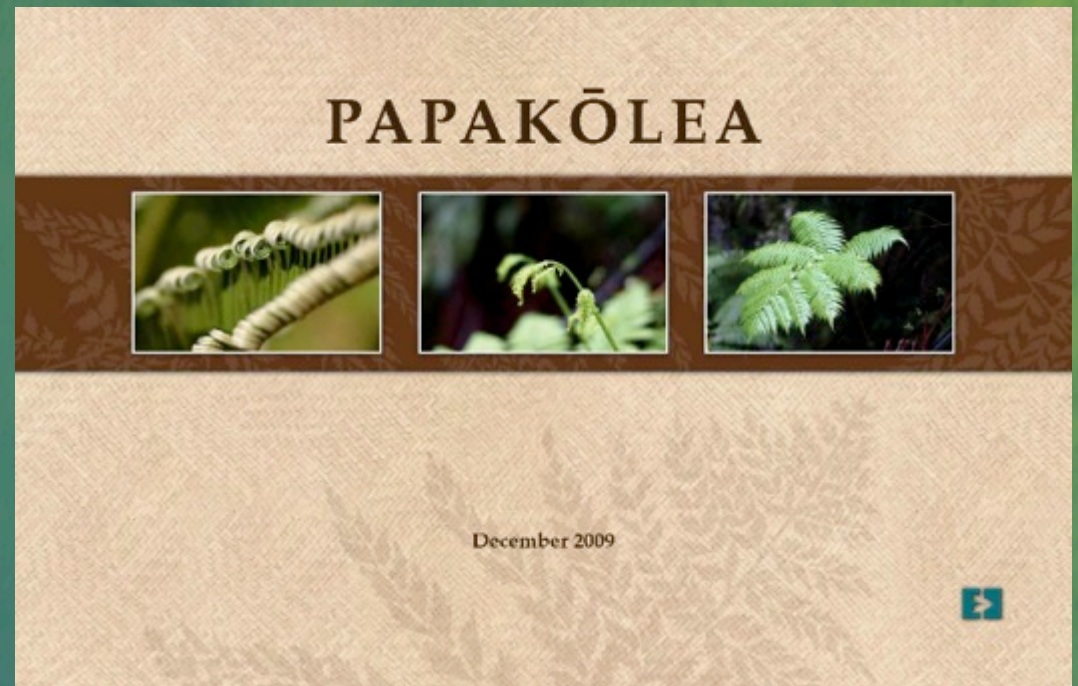
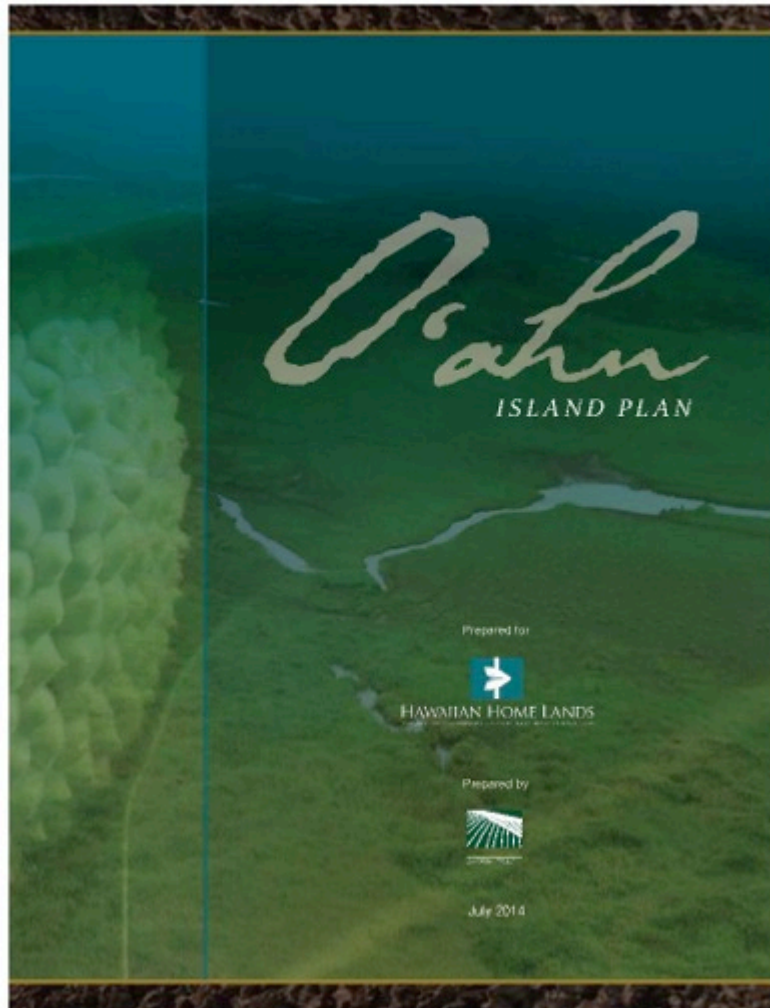
Papakōlea, Kewalo, and
Kalāwahine (177 ac.)

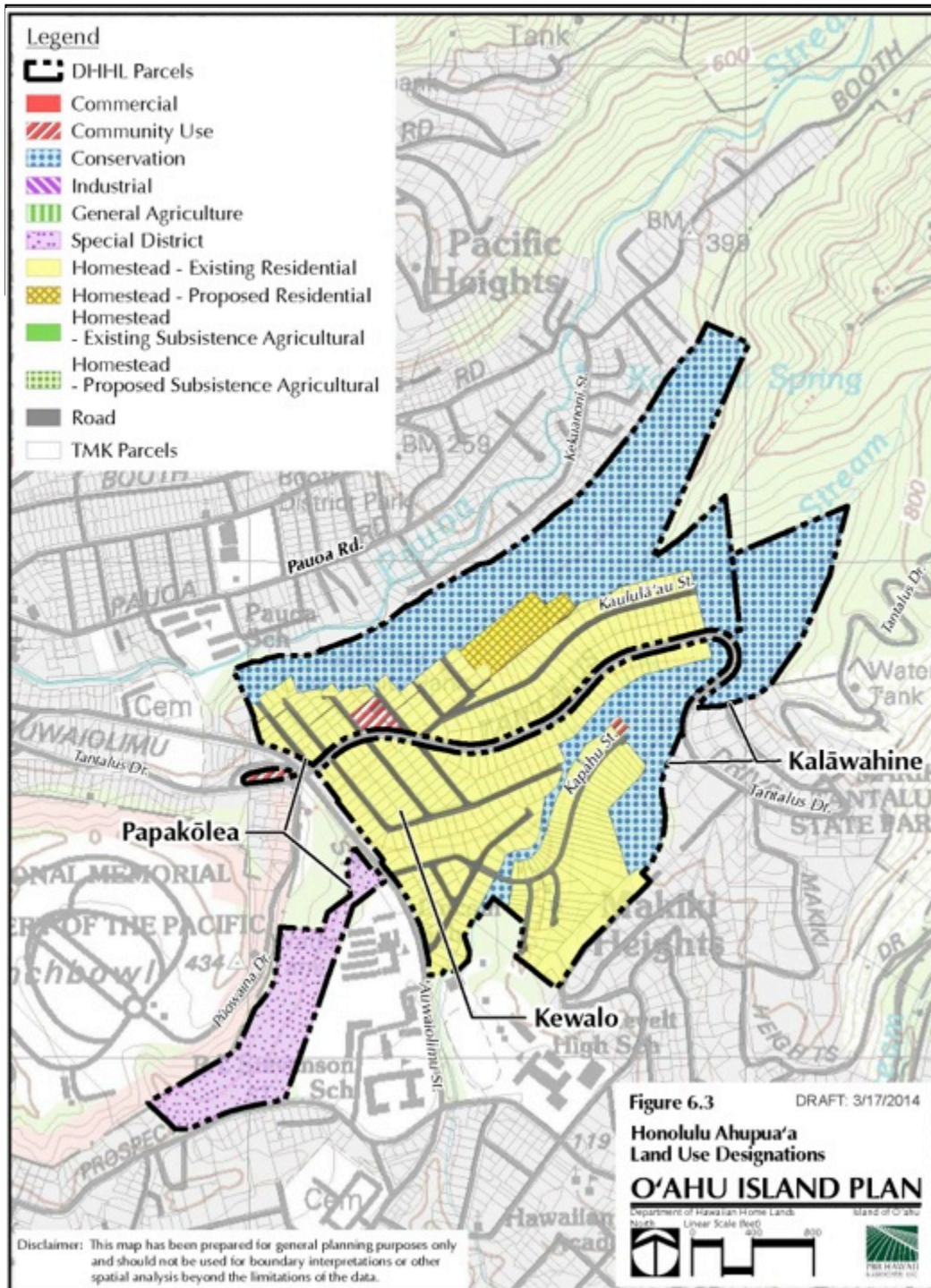
Moanalua, Kapālama,
and Mō'ili'ili (20 ac.)



Island Plan

Regional Plan





O'ahu Island Plan Papakōlea, Kewalo, & Kalāwahine LUD's

- 5 acres were deemed developable for residential homesteads
- 85 acres are in existing residential homesteads
- 2 acres are in Community Use
- 15 acres are in Special District
- 70 acres are in Conservation

PLANNING CONSIDERATIONS

Opportunities

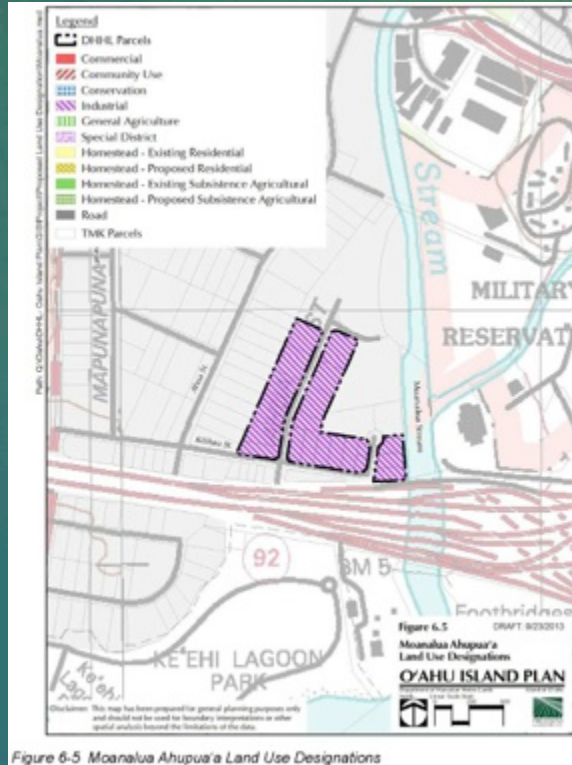
- Location
- Views

Constraints

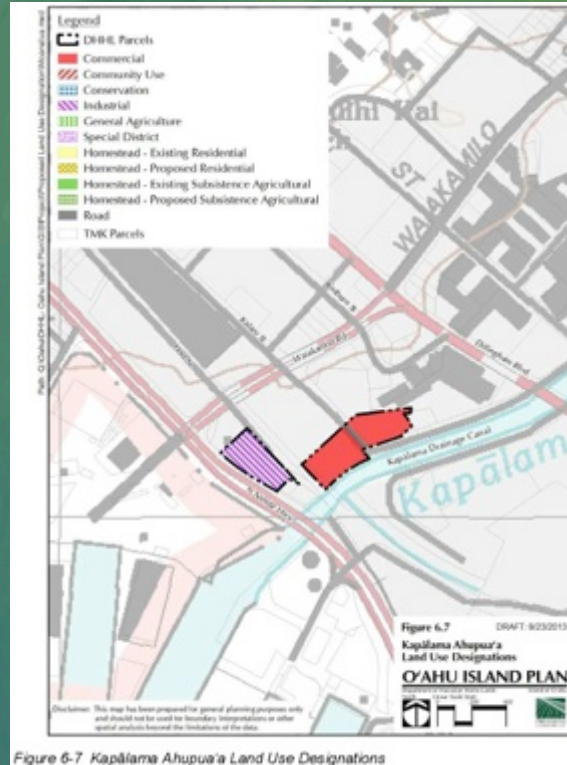
- Steep slopes/rock fall
- Flooding/drainage
- Aging/deteriorating infrastructure
- Community resistance

O'ahu Island Plan

Moanalua, Kapālama and Mō'ili'ili LUD's



Moanalua - 15 acres in Industrial



Kapālama - 3 acres in Commercial and 2 acres in Industrial



Mō'ili'ili - 2 acres in Commercial

PLANNING CONSIDERATIONS

Flooding/drainage, TOD (Transit Oriented Development), and mixed use opportunities

Planning Projects

- **O'ahu Island Plan – COMPLETED**
- **Water Policy Plan – COMPLETED**
- **Agriculture Program Plan**
 - Agriculture Subdivision Process - COMPLETED
 - Peer-to-Peer Ag Pilot Program
- **Native Hawaiian Development Program Plan**
 - Grants Program
 - Training, Technical Assistance, & Capacity Building
- **State Office of Planning Study**
 - Economic Development Strategies for Native Hawaiian Communities - UNDERWAY



HAWAIIAN HOME LANDS
HAWAIIAN HOMES COMMISSION
DEPARTMENT OF HAWAIIAN HOME LANDS

Homestead Community Update

Homestead Organizations

- Kalāwahine Streamside Association
- Hui Maka'āinana a Kalāwahine
- Kewalo Hawaiian Homestead Community Association
- Papakōlea Community Development Corporation
- Papakōlea Community Association
- Sovereign Council of Hawaiian Homesteads Assembly



HAWAIIAN HOME LANDS
HAWAIIAN HOMES COMMISSION
DEPARTMENT OF HAWAIIAN HOME LANDS

Open House

Community Organizations

- **Council for Native Hawaiian Advancement**
- **Department of Commerce & Consumer Affairs**
- **Hawaiian Community Assets**
- **Sandwich Isles Communications**