



DEPARTMENT OF HAWAIIAN HOME LANDS

KAKAINA SUBDIVISION

NEWSLETTER

PROJECT CONTACTS:

Mike Kamaka.....	Bowers + Kubota Consulting	457-8587
Sherwood Kaopua.....	Bowers + Kubota Consulting	286-2709
Peter Sohn	Paradigm Construction	478-0285
Darrell Ing.....	DHHL	620-9276

Bi-Weekly Newsletter No. 3 – Published December 20, 2013

This newsletter is intended to provide information to the residents in the immediate vicinity of the Kakaina Subdivision with a progress summary of the project, upcoming construction activities and answer any concerns or comments posed by our surrounding neighbors. This Newsletter will be published twice a month. Questions or concerns from the neighboring community will be collected and published with each newsletter. If there are any questions or questions, please contact:

Mike Kamaka of Bowers + Kubota at 457-8587 or via e-mail at mkamaka@bowersandkubota.com; or Sherwood Kaopua of Bowers + Kubota at 286-2709 or via e-mail at skaopua@bowersandkubota.com.

In addition to this newsletter, the project team will conduct monthly "talk story sessions" to meet with interested residents. The meetings will be conducted at the project trailer located on Kakaina Street near the Mekia Street intersection. The first meeting was held on November 26 at 2:30 p.m. The next meeting will be held on **January 14, 2014 at 2:30 p.m.**

PROJECT SCOPE

The Kakaina Subdivision Project will create forty-five (45) single family lots with infrastructure improvements. The infrastructure development includes potable water, sewer, drainage, electrical and communication, and roadway for the project site. Off-site work includes re-location of a 20-inch water main on Hihimanu Street and roadway improvements on Kakaina Street.

SUMMARY OF WORK PERFORMED SINCE NEWSLETTER NO. 2

Due to rainy weather over the past weeks, the contractor has re-scheduled some of its work activities. The following work was performed:

- **Repair of Dust Screens:** Paradigm repaired dust screens along Lots 36-44 damaged from recent rain and wind;
- **Mass Excavation and Import Fill:** Paradigm continued with mass excavation of the subgrade at Lots 1, 2, 31, 32, 33 and 34 and placed import fill material to bring the lots up to grade;
- **Install Waterline:** Paradigm started the installation of the water line on Puha/Kaulukanu area;
- **Install Concrete at Culvert Connection:** Concrete was poured for connection points for the box culvert along Mekia Street. The steel plates were removed upon completion and paving replaced.

UPCOMING WORK

The Contractor anticipates the following work to occur during the next two weeks, weather permitting:

- **Placement of Import Fill:** Paradigm will continue with placement of fill at Lots 1, 2 and Puha Street. Paradigm will continue placing import fill in these areas as required;
- **Install Waterline:** Paradigm will continue with the installation of the water line on Puha Street/Kaulukanu area. This work is contained within the property boundary;
- **Install Bait Stations:** Paradigm will re-schedule the pest control company to install bait stations along the northern portion of the property to address concerns regarding rodents.

The City and County Building Department has approved the re-design of closing off the Kaulukanu Street thoroughfare. Paradigm will be re-evaluating its schedule upon receipt of the approved re-design plans from the City.

See attached map of working areas. Work areas are subject to change.

QUESTIONS AND CONCERNS

This section will present questions and concerns regarding the project, and the response/action by DHHL or Paradigm:

1. Tall grass in the construction yard on Mekia Street is contributing to the increased presence of mongoose and rodents and should be cut and maintained

Paradigm will schedule work to cut the grass along Mekia Street next to the construction staging area.

2. During heavy rains, dirt and muddy water flows from construction yard into Mekia Street. Berms were removed from construction yard facing Mekia Street

After the grass is cut, Paradigm will assess the site conditions and repair or install sediment control devices as required to contain sediment within the project site.

3. Heavy rains over the weekend washed debris left behind by heavy equipment going down Mekia Street

Paradigm will remind its crew and truckers of its housekeeping practices for heavy equipment traveling on public roadways. Paradigm will “dry” sweep the public roadways before washing the roadway with its water truck.

4. Concrete piling were installed along Mekia Street to prevent dumping of cars on the property. With the installation of the chain link fence, the concrete piling are no longer required. Will DHHL consider removing the pilings?

DHHL will request Paradigm to move the concrete pilings along Mekia Street, next to the baseyard area, and store within the chain link fencing of the baseyard area.

5. Heavy vibration from work on the Site is affecting structures and foundations of older houses in the area. What can be done?

Paradigm has responded to this issue by altering its construction practice, including compacting “thinner” layers of fill, and using smallest size equipment practicable. Paradigm is using a ride-on, articulated, single drum sheepsfoot roller. This roller primarily compacts the soil through the weight of the equipment, rather than mechanical vibration. This adjustment in construction practice is the maximum extent to minimize vibration and still meet the compaction requirements. Paradigm’s sheepsfoot roller’s operating weight is approximately 33,770 pounds. For comparison, a typical, fully loaded, refuse truck is approximately 50,000 pounds.

Compaction work being performed on the Site is being observed by the Construction Manager, Geotechnical Consultant, in addition to Paradigm supervisors. The Site inspectors have not observed any unusual occurrences associated with typical construction practices being implemented. If there are observations of “mini earthquake” levels of shaking occurring during construction, please call the Field Office (286-2709) and request the Inspector observe what is occurring at your property.

6. Storm water runoff from heavy rains is leaving the Site near Poalima Street. We had been informed that catch basins were to be installed at Mekia and Poalima Streets to help with flooding.

The original approved construction plans included drainage improvements as part of the Kaulukanu Street connection to Poalima Street. At the community’s urging, the plans were revised eliminating the connection. As a result, drainage improvements to Poalima and Mekia Streets are not required and will not be installed by DHHL.

The on-site grading and drainage system are designed to eliminate the flow of stormwater from the project site

onto Poalima and Mekia Streets. Storm water will be collected by the new concrete ditch and drainage structures within Puha Street. The storm water will be diverted through the new box culvert being installed on Mekia Street to Kahawai Stream and/or through a detention basin at the corner of Hihimanu and Kakaina Streets and toward an existing storm drain connection. Please see attached drainage plan.

Paradigm has established a Best Management Practices plan to minimize storm water runoff from the Site and will continue to implement and monitor the effectiveness of it.

7. The surrounding roadways in Waimanalo have been paved by the City. Will Poalima, Mekia, Hihimanu and Kakaina Streets in the surrounding area be re-paved when the Kakaina subdivision is completed?

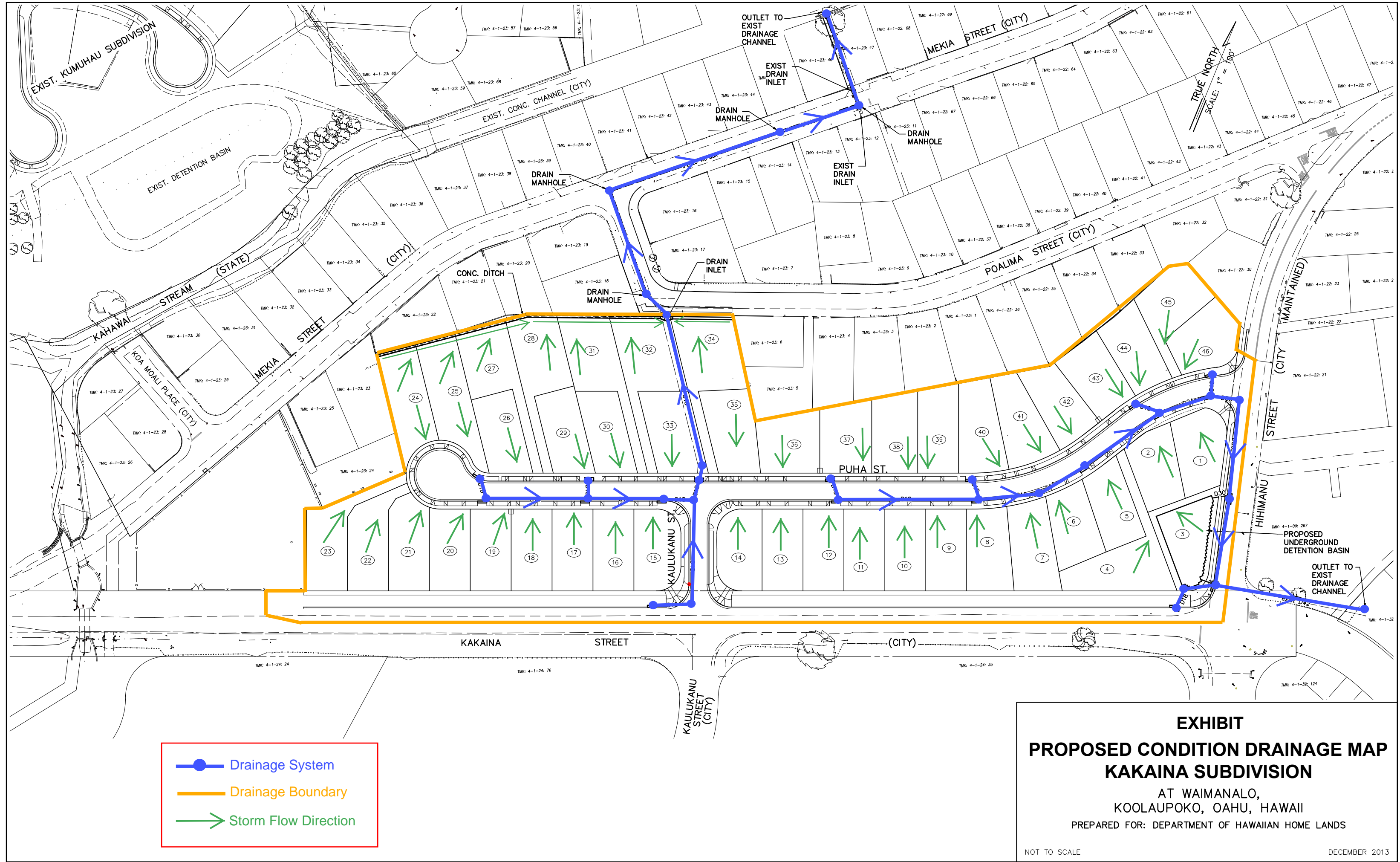
Paving work for Poalima, Mekia, Hihimanu and Kakaina Streets have been suspended by the City until the Kakaina Subdivision is completed. DHHL and the City have coordinated to prevent installation of new paving prior to completion of the Kakaina Subdivision. We shall inform the City when the project off-site work is complete so that they can schedule resumption of the paving work.

8. Why is work not being done continuously? For instance, why has the contractor stopped drain line work on Mekia Street and not complete to the Kakaina Site?

Paradigm has completed nearly all the work not affected by the revision of the construction plans to remove the connection of Kaulukanu and Poalima Streets. Rather than suspend all work until design changes are completed, DHHL has directed Paradigm to perform as much work to minimize future delay to the completion of the project, while awaiting re-design approval. Work associated with the re-design cannot commence until revised plans are approved by the City.

ATTACHMENTS: Areas of Proposed Work December 17 to December 31, 2013
Drainage Plan at Completion of Construction

Prepared by B+K Consulting






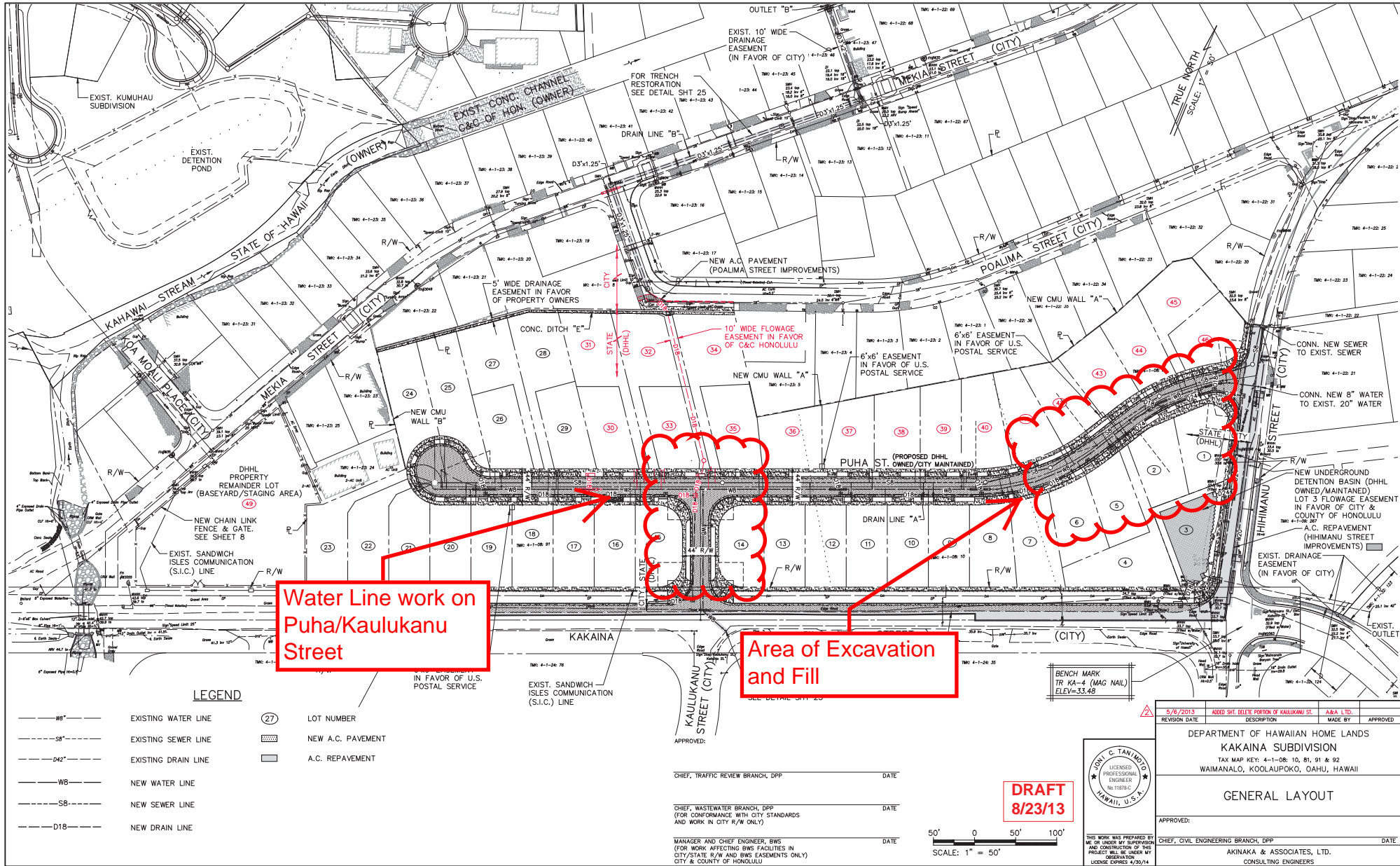
	Drainage System
	Drainage Boundary
	Storm Flow Direction

EXHIBIT
PROPOSED CONDITION DRAINAGE MAP
KAKAINA SUBDIVISION
 AT WAIMANALO,
 KOOLAUPOKO, OAHU, HAWAII
 PREPARED FOR: DEPARTMENT OF HAWAIIAN HOME LANDS

NOT TO SCALE

DECEMBER 2013

AREAS OF PROPOSED WORK FOR DECEMBER 17 - DECEMBER 31



Work areas may be subject to change without notice