

REVISION	DATE	DESCRIPTION	BY	APPROVED
6-20-12		WATER DETAIL REVISION	WW	
REVISIONS				

WAYNE T. WADA
LICENSED PROFESSIONAL ENGINEER
No. 5281-C
KAWAII, U.S.A.

THIS WORK WAS PREPARED
BY ME OR UNDER MY SUPERVISION

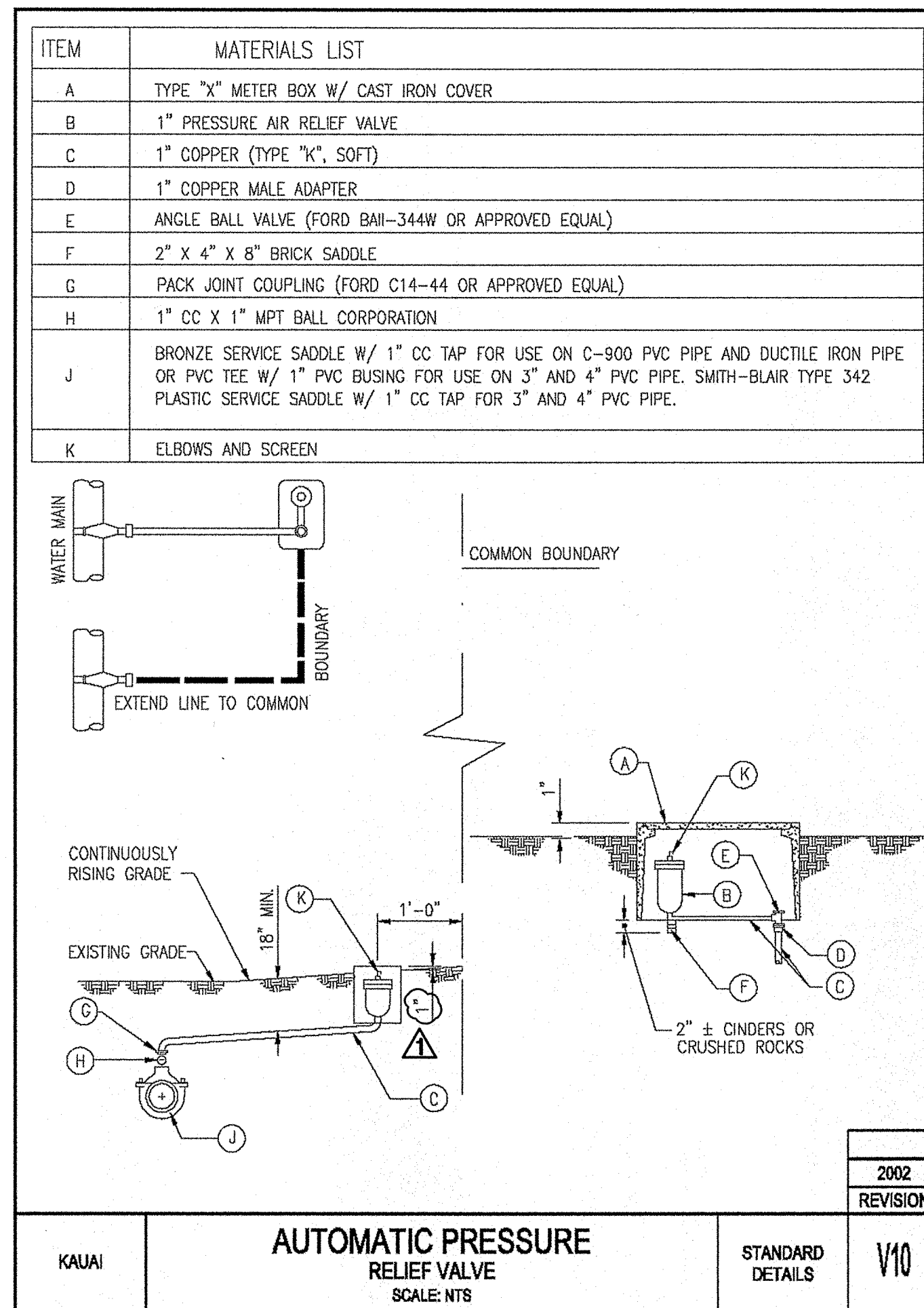
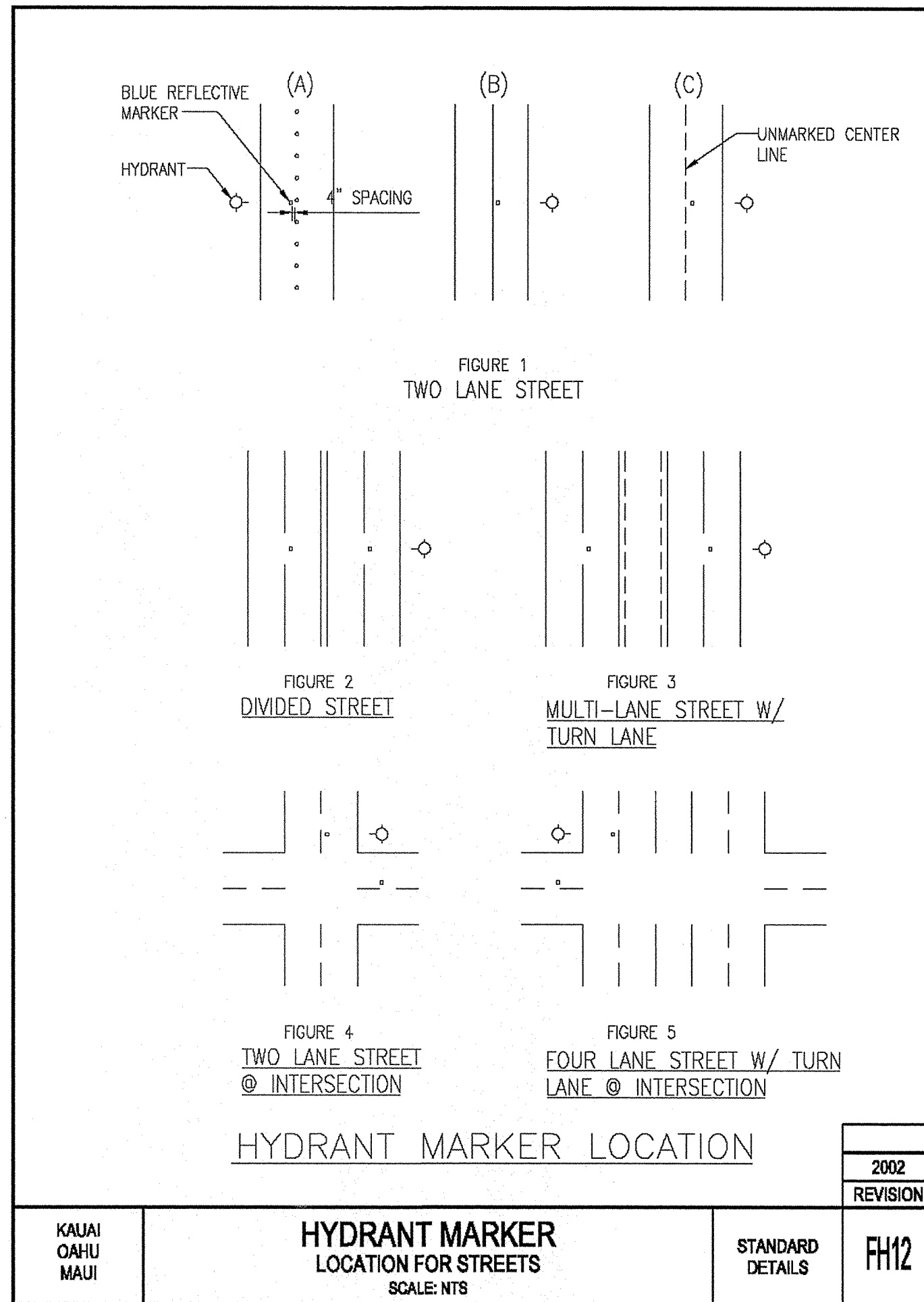
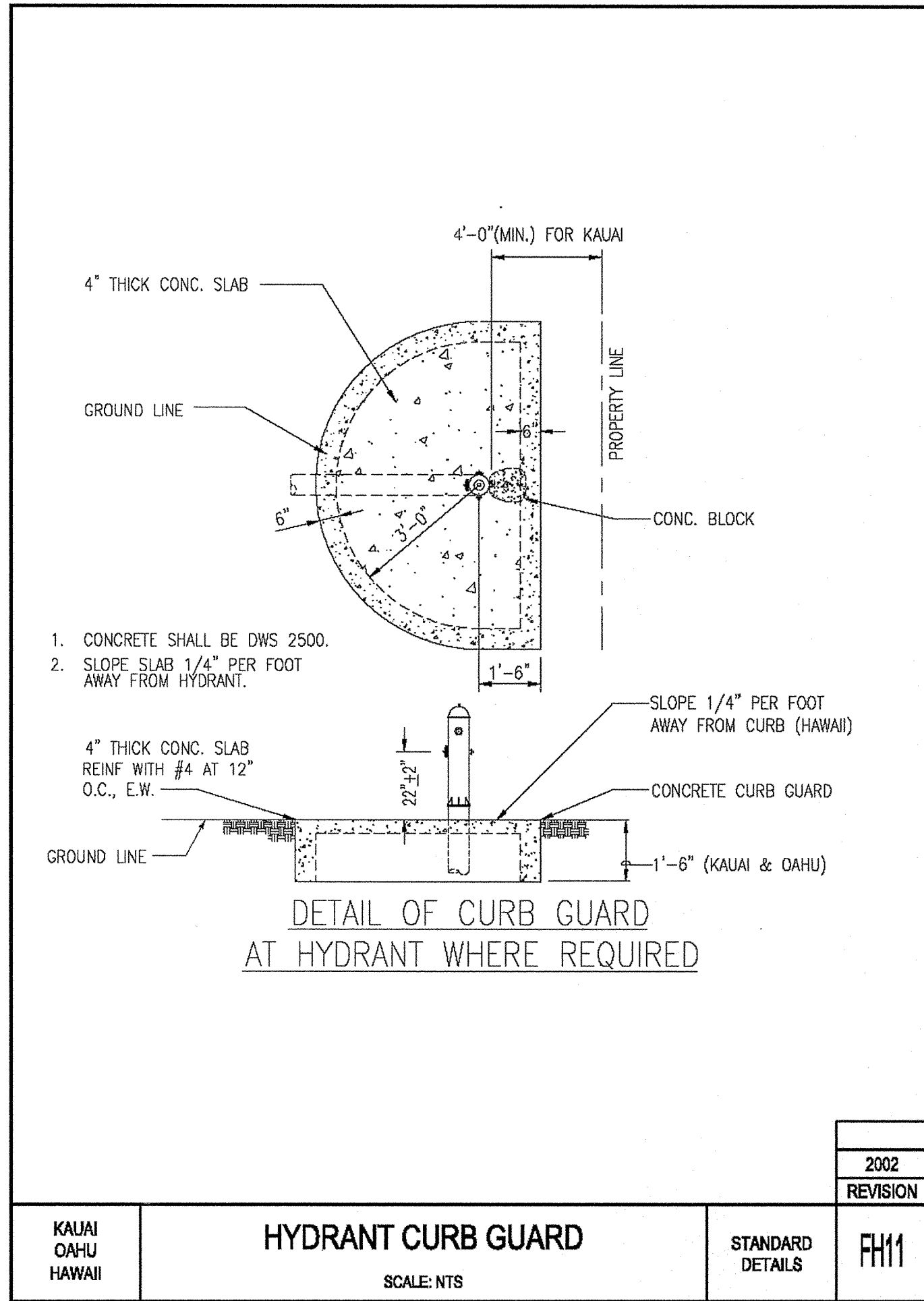
Wayne T. Wada
EXPIRES: APRIL 30, 2014

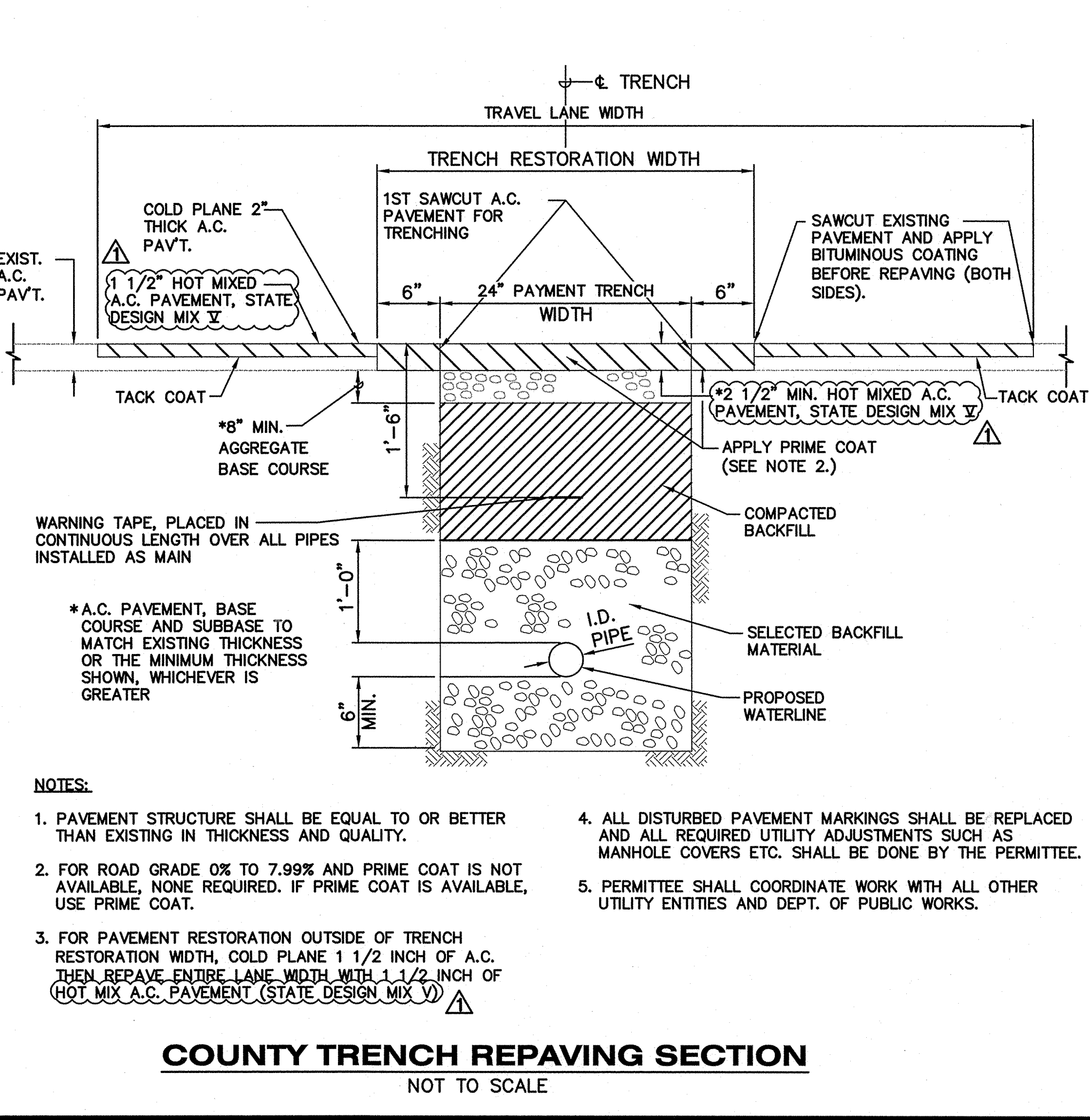
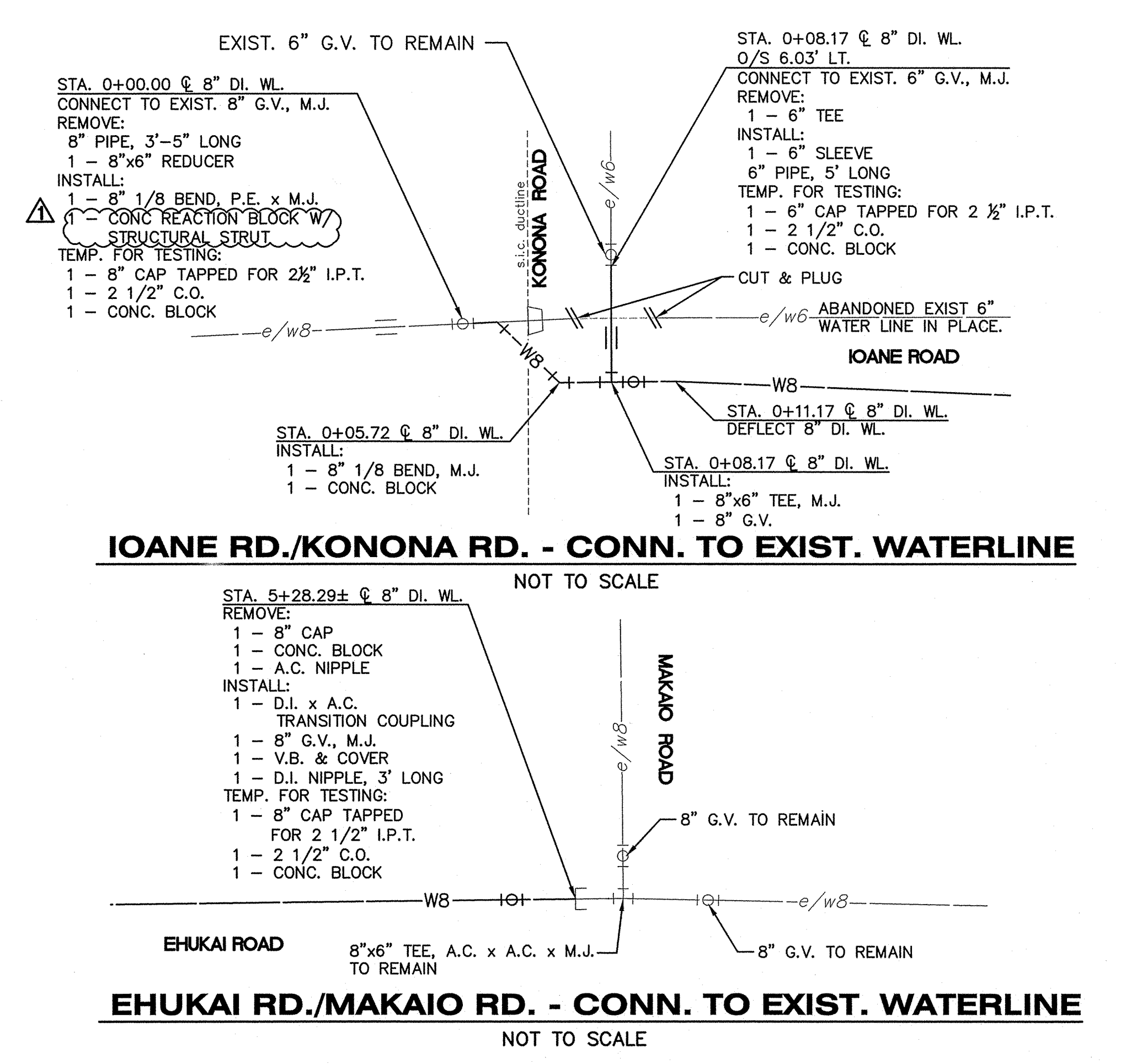
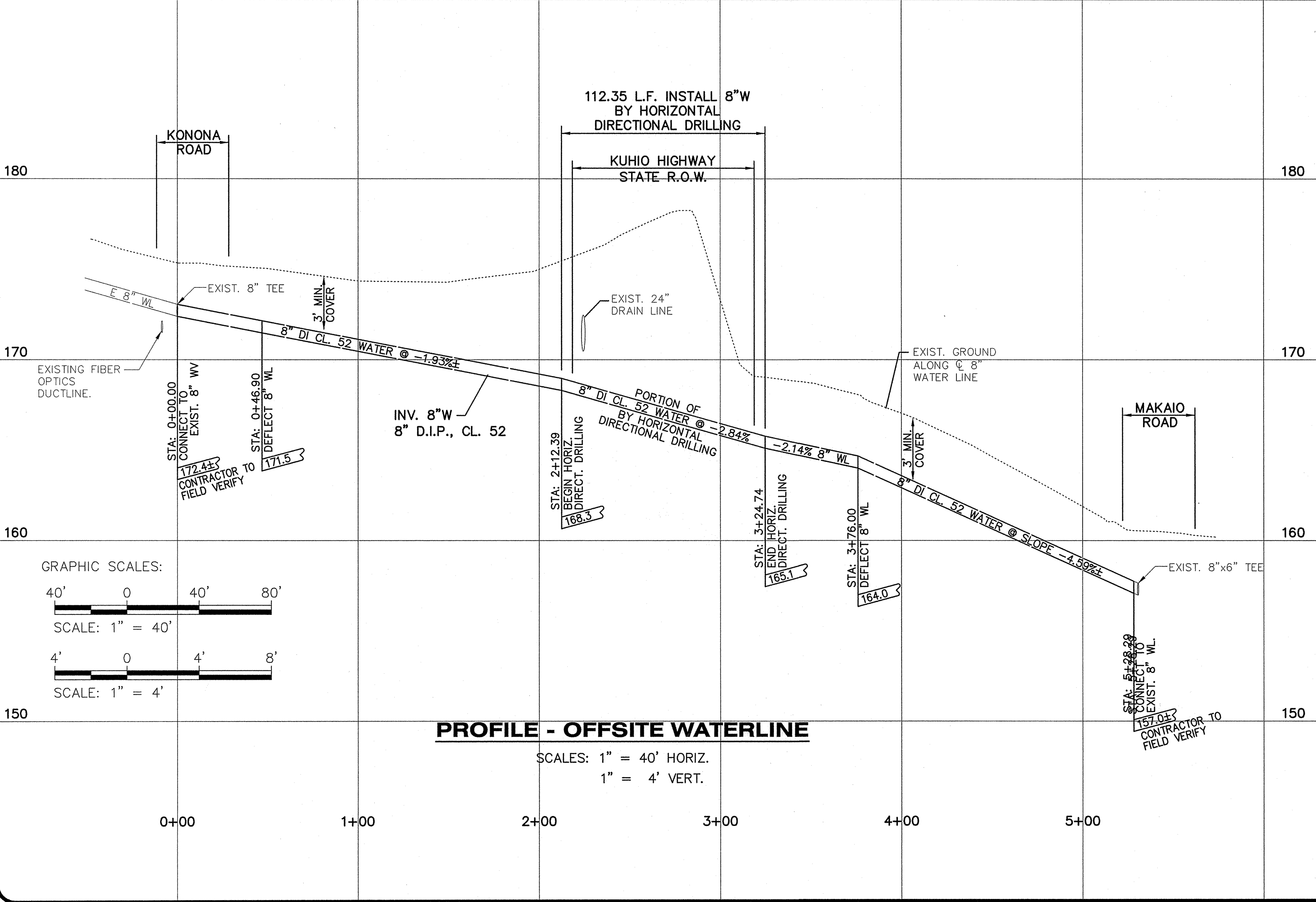
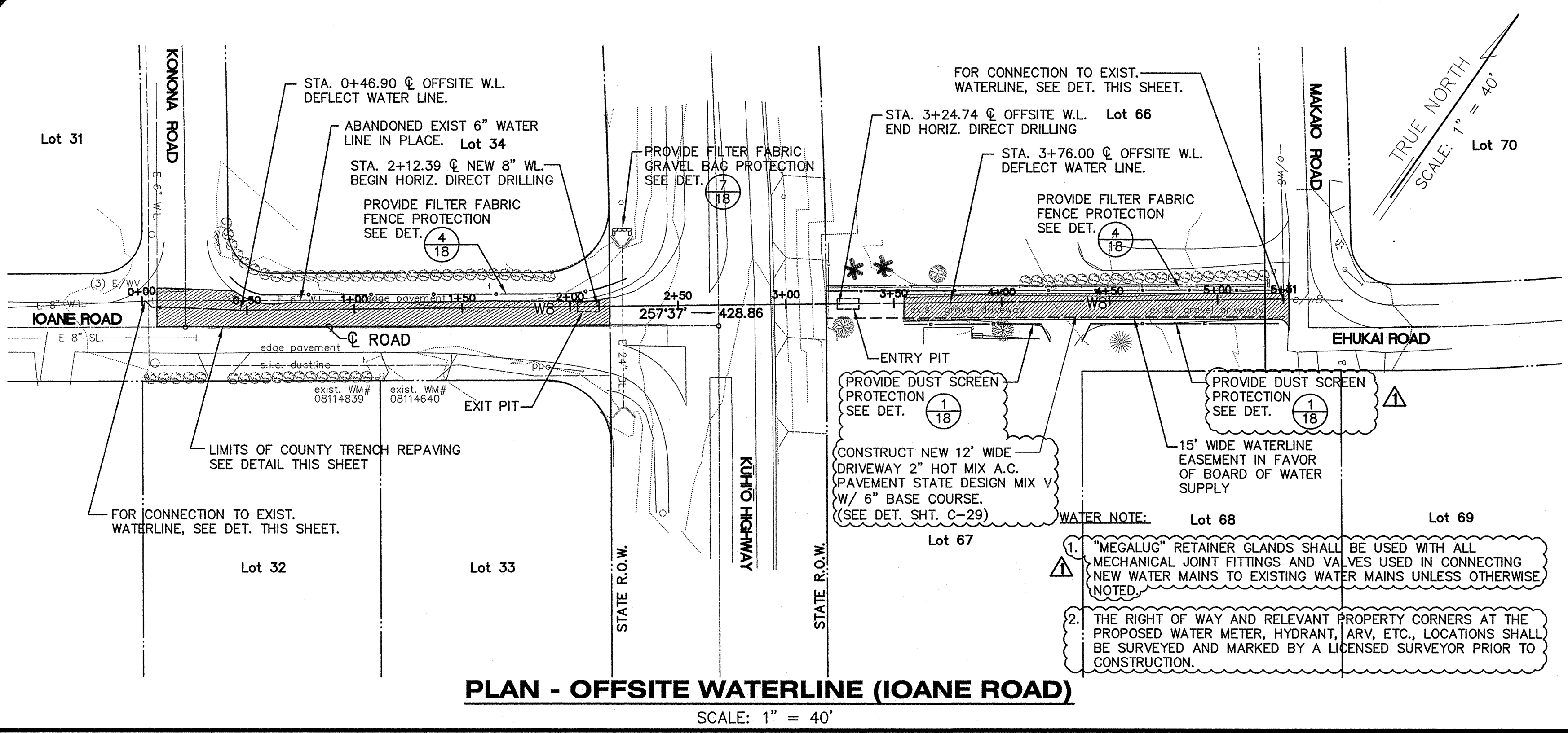
**PILANI MAI KE KAI SUBDIVISION
PHASE II**

Anahola, Kauai, Hawaii

Tax Map Key: (4) 4-8-16: 03
(4) 4-8-22: 89

Developer/Owner:
Department of Hawaiian Home Lands
91-5420 Kapelei Parkway
Kapelei, HI 96707





ESAKI
SURVEYING AND
MAPPING, INC.

1610 Halekuna Street
Lihue, Kauai, Hawaii 96766
Ph. (808) 246-0625 Fax (808) 246-0229

CIVIL ENGINEERS • SURVEYORS • PLANNERS

REVISION	DATE	DESCRIPTION	BY	APPROVED
6-20-12		OFFSITE WATERLINE REVISIONS	WW	

WAYNE T. WADA
LICENSED PROFESSIONAL ENGINEER
No. 5281-C
KAWAII, U.S.A.

THIS WORK WAS PREPARED
BY ME OR UNDER MY SUPERVISION

Wayne T. Wada
EXPIRES: APRIL 30, 2014

**PILANI MAI KE KAI SUBDIVISION
PHASE II**
Anahola, Kauai, Hawaii
Tax Map Key: (4) 4-8-16: 03
(4) 4-8-22: 89
Developer/Owner:
Department of Hawaiian Home Lands
91-5420 Kapelei Parkway
Kapolei, HI 96707

**OFFSITE WATERLINE
(IOANE ROAD) &
DETAILS**

APPROVED:

COUNTY ENGINEER, DEPT. OF PUBLIC WORKS, COUNTY OF KAUAI

MANAGER & CHIEF ENGINEER, DEPT. OF WATER, COUNTY OF KAUAI

DESIGNED BY: WW
DRAWN BY: CG
DATE: 03/27/12

SHEET
C-41
41 OF 44 SHEETS

Project No.: 11-157
Drawing No.: 11-157 OFFSITE WL.dwg