



DEPARTMENT OF HAWAIIAN HOME LANDS

**Acquisition of**  
**Vacant Varona Parcels**  
**for Ewa Drum site**

*Beneficiary Consultation January 13,14,15, 2010*



# Purpose of Meeting



DEPARTMENT OF HAWAIIAN HOME LANDS  
BENEFICIARY CONSULTATION

*Mai ko kākou mana'o, e hālupa nō kākou*  
*From our ideas, we flourish*



**Prince Kūhiō's vision for Hawaiian Home Lands was greater than just building houses and returning native Hawaiians to the land.**

**He understood that self-sufficiency would ensure the continued survival of the people on the land and that the location of these Trust lands would be vital to achieving the vision.**

# Hawaiian Home Lands Recovery Act

HAWAIIAN HOME LANDS  
RECOVERY ACT OF 1995  
PUBLIC LAW 104-42

\* \* \* \*

Settlement of Claims  
Federal Use of  
Hawaiian Home Lands 1921-1959

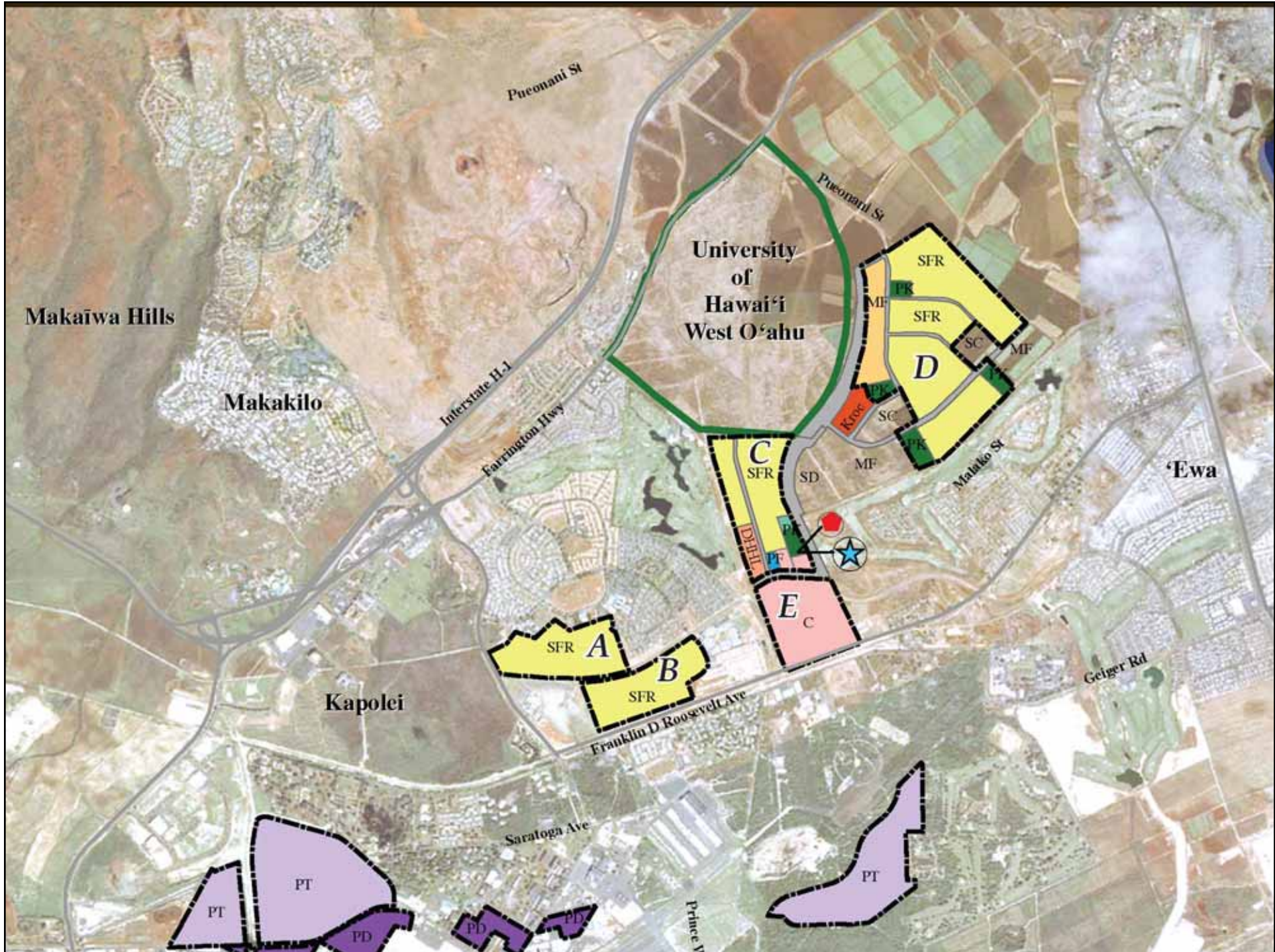
# Hawaiian Home Lands Recovery Act

Settlement of Claims Section  
203 (c) (3) Provides federal  
fee non ceded lands received  
by DHHL may be sold as  
compensation for lost use  
under this Act.

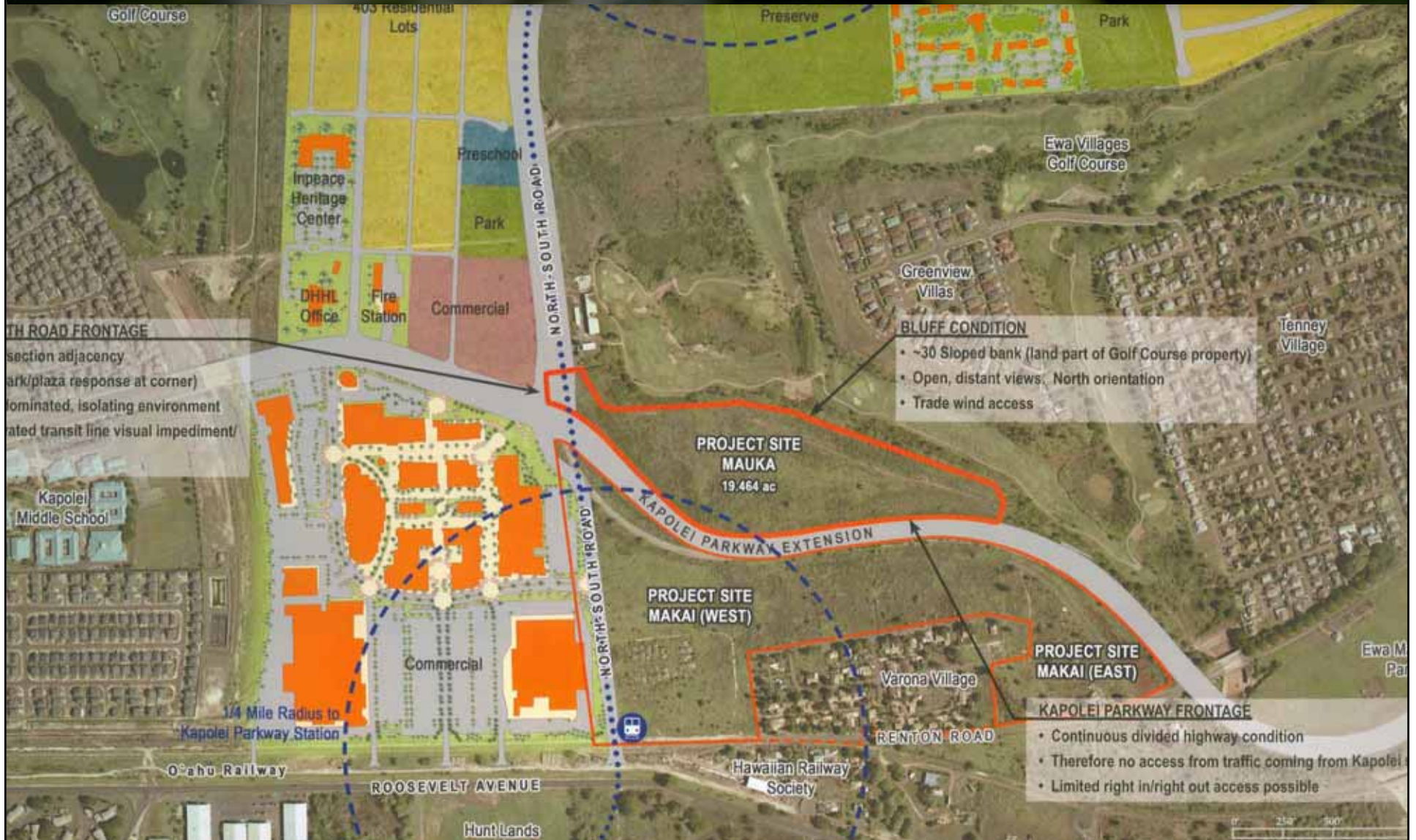
# Hawaiian Home Lands Recovery Act

In 1995 DHHL selected the Ewa Drum site which was a former Navy Fueling Yard.

It is located between Leeward Community College and Waipahu High School. The site is bordered by a steep slope and roadway easements which support the highway. DHHL also started to acquire and develop lands in Kapolei.



# Vacant Varona Parcel Land Acquisition





# Varona Land Acquisition

**May 23, 2006**

**HHC approved the MOA to start Discussions to acquire Varona Village which is located adjacent to DHHL's master planned community of East Kapolei for future homestead development expansion.**

# Varona Land Acquisition

**July 20, 2009**

**DHHL conducted Beneficiary Consultation for Varona Village.**

**October 20, 2009**

**HHC approved MOA for mutual sale or exchange for Varona Village.**



DEPARTMENT OF HAWAIIAN HOME LANDS

*Questions/Discussion*



DEPARTMENT OF HAWAIIAN HOME LANDS

***Mahalo!***

[www.dhhl.hawaii.gov](http://www.dhhl.hawaii.gov)